



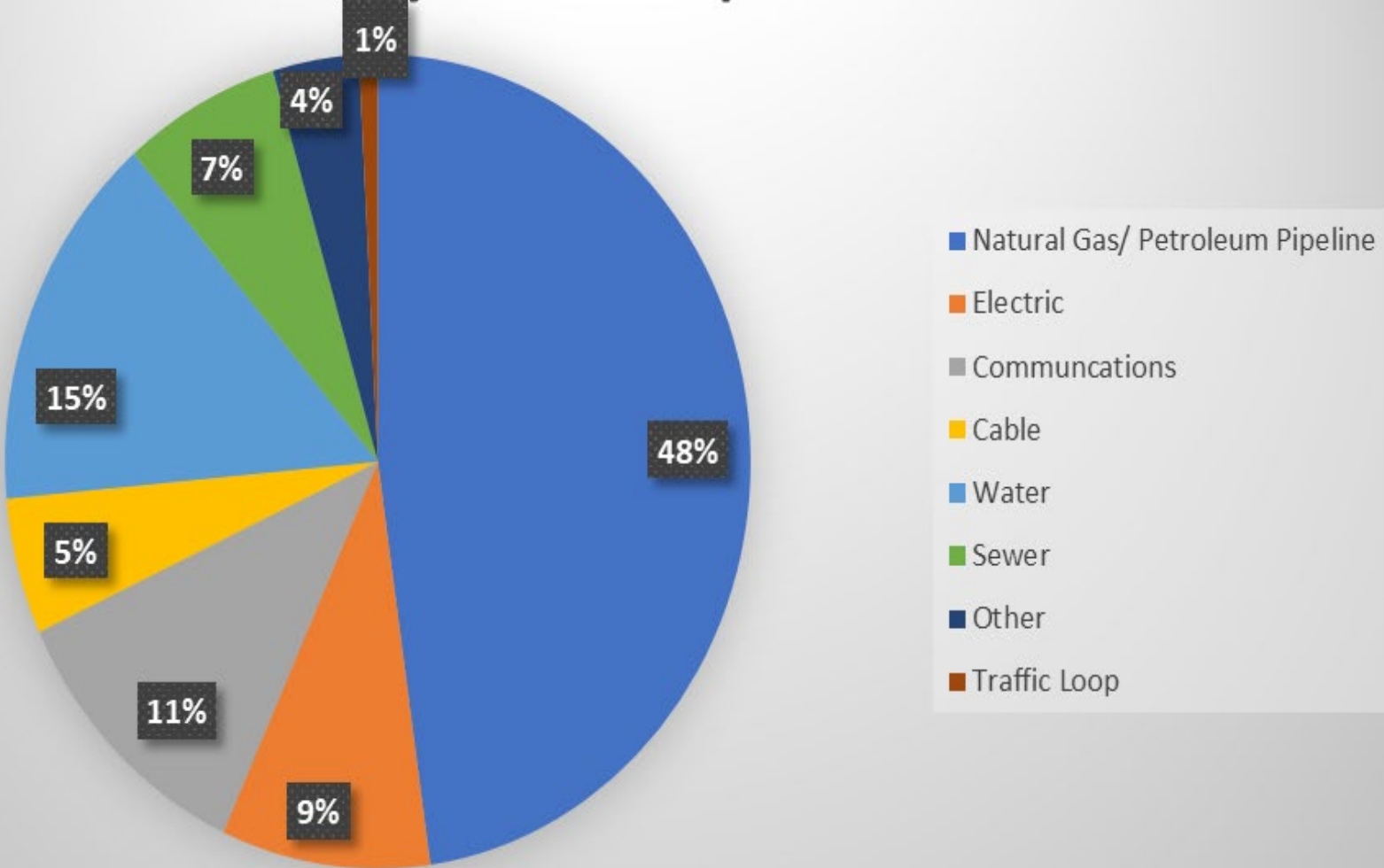
## 2023 Safety Seminar

A photograph of an industrial facility, likely a gas or oil processing plant, featuring several large white pipes and valves with prominent red handwheels. The background is a clear blue sky.

# 2022 Damage Prevention Stats and Data

- 495 Cases through the DPC in 11 meeting in 2022
- ~\$844,000 in fines levied in 2022
- ~\$1.46 million levied so far in 2023 (through August)
- Over \$3.9 million levied since inception
- 175 stakeholders with educational requirements
- While peaks are in the summer, AVR #s remain relatively close in each month.
- In 2022, 48 % of AVRs involved gas facilities followed by water with 15%.

# AVRs Sent by Affected Operation in 2022



# 2023 High Profile Investigations/Tragic Events:

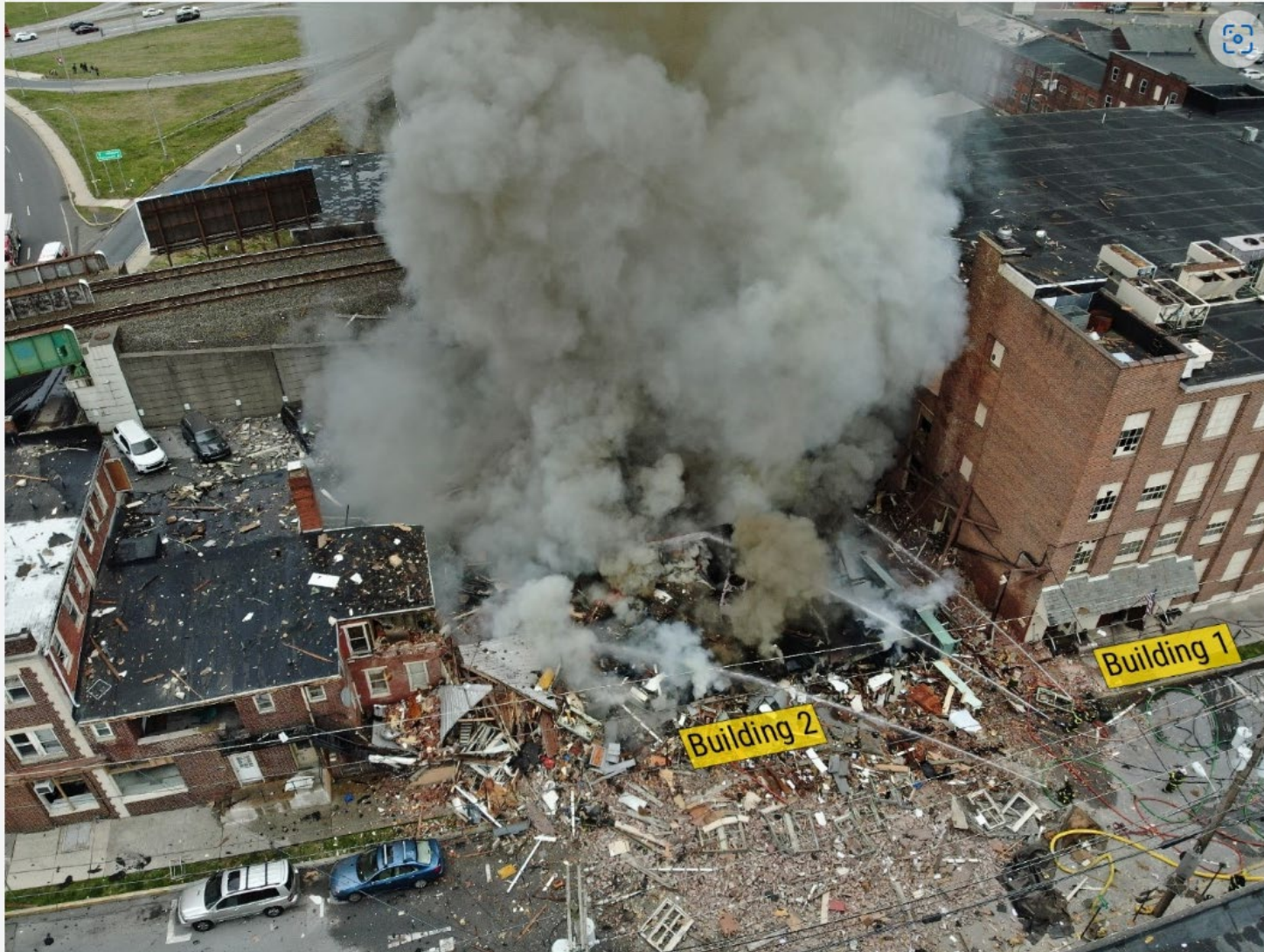
- Palmer Chocolate Factory, West Reading, Berks County-March 24, 2023
- Rustic Ridge Drive, Plum Borough, Allegheny County – August 12, 2023

\*Both are active investigations\*





# NTSB Preliminary Information:



# West Reading RM Palmer Chocolate Factor

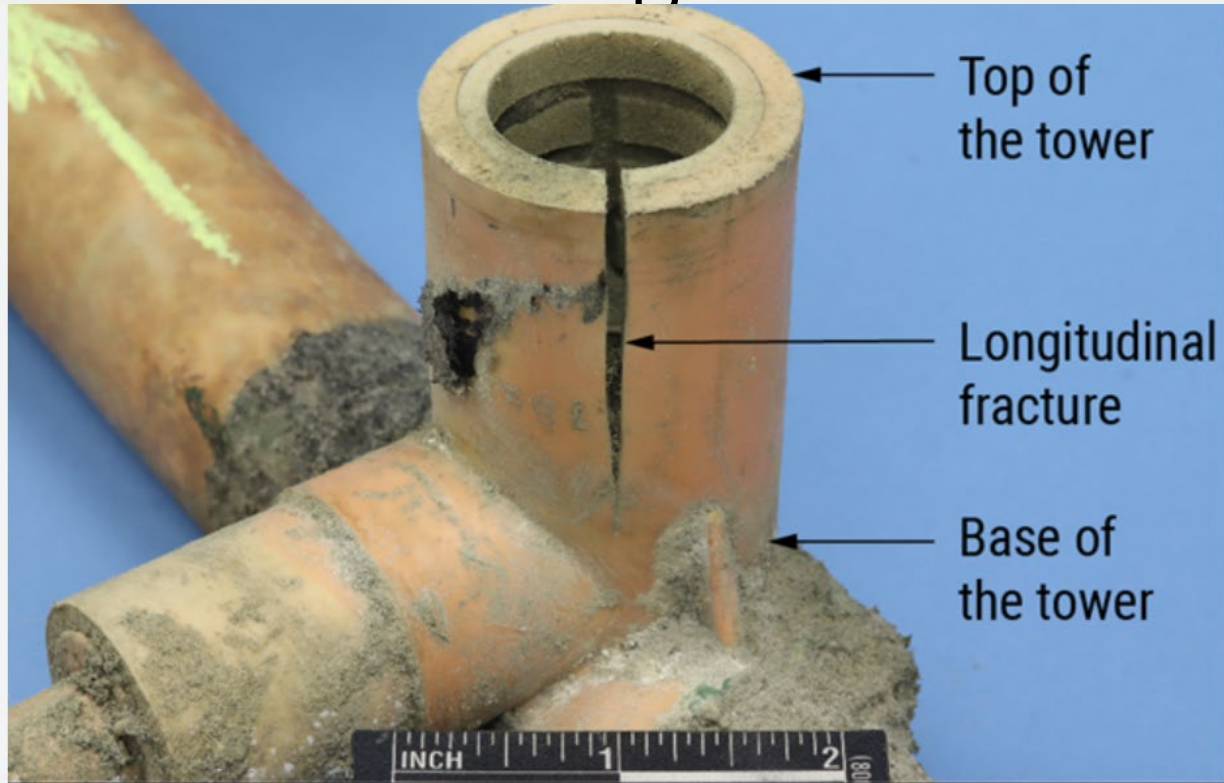
- Seven people were killed, 11 people were injured, 3 families were displaced from a neighboring apartment building, and many more people were evacuated from the area
- “Aldyl A” is the trademarked name of a polyethylene plastic gas pipeline product manufactured by the DuPont chemical company using a proprietary polymer resin..
- The 1982 service tee was less than 2-feet from subsurface infrastructures that ran between Palmer Buildings 1 and 2, including a steam line, a condensate line, and several heated chocolate pipelines. NTSB investigators observed general corrosion and a crack in the steam line when it was exposed on-scene. Further examination of the 1982 service tee by the NTSB’s Materials Laboratory revealed that the tower, which houses the tap, consisted of an outer shell and a Dupont Delrin® insert. The insert fractured in the transverse direction near its base.
- [PLD23LR002.aspx \(nts.gov\)](https://www.nts.gov/press-releases/2023/07/18/PLD23LR002.aspx)

\*NTSB update July 18, 2023





# West Reading RM Palmer Chocolate Factory



The Pipeline and Hazardous Materials Safety Administration (PHMSA) added Aldyl A service tees with Delrin inserts to their list of pipe materials with “poor performance histories relative to brittle-like cracking” on September 6, 2007. Additionally, industry guidance in ANSI/GPTC Z380.1, The Guide for Gas Transmission, Distribution, and Gathering Pipeline Systems discusses previous experience with DuPont polyethylene service tees with Delrin polyacetal inserts that were installed in the late 1960s to early 1980s.

Figure 1. DuPont Aldyl A service tee installed in 1982 longitudinal fracture along the tower, July 3, 2023.



# Rustic Ridge –Plum Borough

- [PUC Safety Division Provides Update on Investigation into Deadly House Explosion in Plum Borough, Allegheny County | PA PUC](#)
- Six fatalities at 141 Rustic Ridge.
- To date, the ongoing Safety Division investigation has included the following:
- Interviewing residents, first responders, Peoples Gas employees and others who witnessed the incident or have relevant information.
- Monitoring testing by Peoples Gas of natural gas mains, service lines and other public utility facilities in the Rustic Ridge Drive neighborhood, including:
  - Pressure testing of utility systems.
  - Leak surveys and other testing for natural gas readings.
  - Odor level testing in the Peoples Gas system.
  - The gathering of gas samples for laboratory analysis.
  - Purging the Peoples Gas natural gas system before placing it back into service.
  - Geophysical testing around the incident site being conducted for Peoples Gas by a third-party expert.
- Working with the fire marshal to access the incident site to identify and recover the gas meter, regulator, service lines and other public utility systems.





# Rustic Ridge –Plum Borough

- Observing the pressure testing of a PENNECO Oil Company production line behind the incident site and the performance of leak surveys by PENNECO.
- Additionally, safety engineers have closely monitored the safe restoration of electric and natural gas service to undamaged homes in the neighborhood. This includes observation of Peoples Gas personnel performing service restoration for customers whose service was shut off because of the incident; testing of valves on service lines and abandon services for structures around the incident site that were damaged and/or condemned; and continued safety checks by Peoples Gas in the Rustic Ridge neighborhood.
- Moving forward, the Safety Division continues to review operator records and maps of public utility facilities around the incident site and remains in close communication with the Allegheny County Fire Marshal, the Pennsylvania Department of Environmental Protection (DEP), the U.S. Pipeline and Hazardous Materials Safety Administration (PHMSA), Peoples Gas and other entities involved in the investigation of this incident.



# Rustic Ridge –Plum Borough



In this screen grab from a video, widespread damage is shown after a house explosion in Plum, Pa., on Aug. 12, 2023.

# Thank You

[www.puc.pa.gov](http://www.puc.pa.gov)



**Robert Horensky**  
Manager, Safety Division  
Bureau of Investigation and Enforcement

Phone: 717 497-4711   
Email: [rhorensky@pa.gov](mailto:rhorensky@pa.gov)  
Consumer Hotline:  
1-800-692-7380