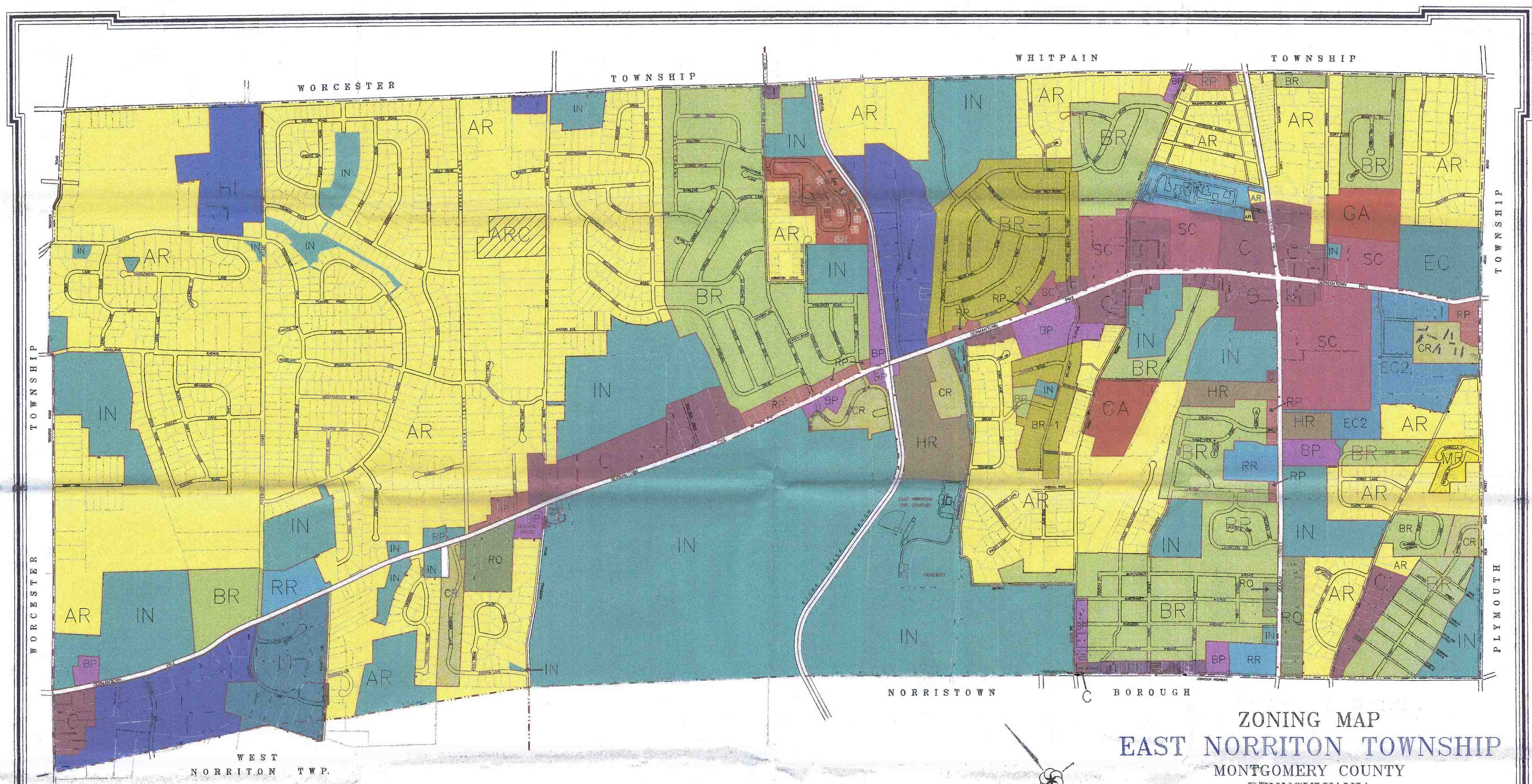


FIGURE 1-1



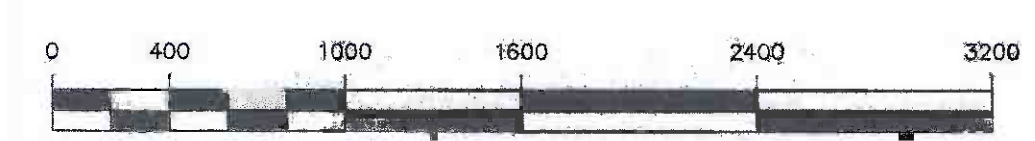
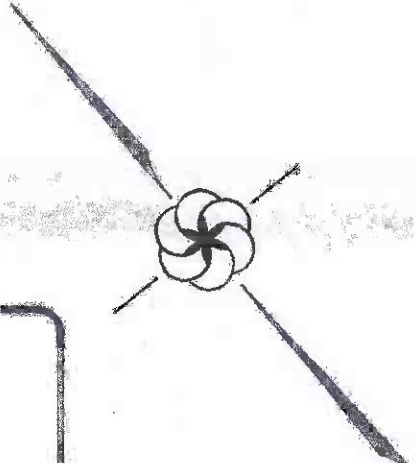
ZONING MAP
EAST NORRITON TOWNSHIP
 MONTGOMERY COUNTY
 PENNSYLVANIA

REVISIONS

REV. DATE	Ord. No.	REV. DATE	Ord. No.
APRIL 6, 1995	New Colorized Map	MAY 25, 2004	567
NOV. 13, 1995	358	DEC. 04, 2004	471
MARCH 11, 1996	363	JAN. 25, 2005	473
APRIL 1, 1997	382		
JULY 14, 1997	278		
AUG. 11, 1998	395		
AUG. 14, 1998	396		
MARCH 9, 1999	405		
NOV. 9, 1999	411		
JAN. 1, 2000	413		
APRIL 26, 2001	428		
APRIL 26, 2001	429		
APRIL 26, 2001	430		
AUG. 27, 2001	434		
MARCH 25, 2003	452 - ECH		
APRIL 22, 2003	453		

ZONING LEGEND

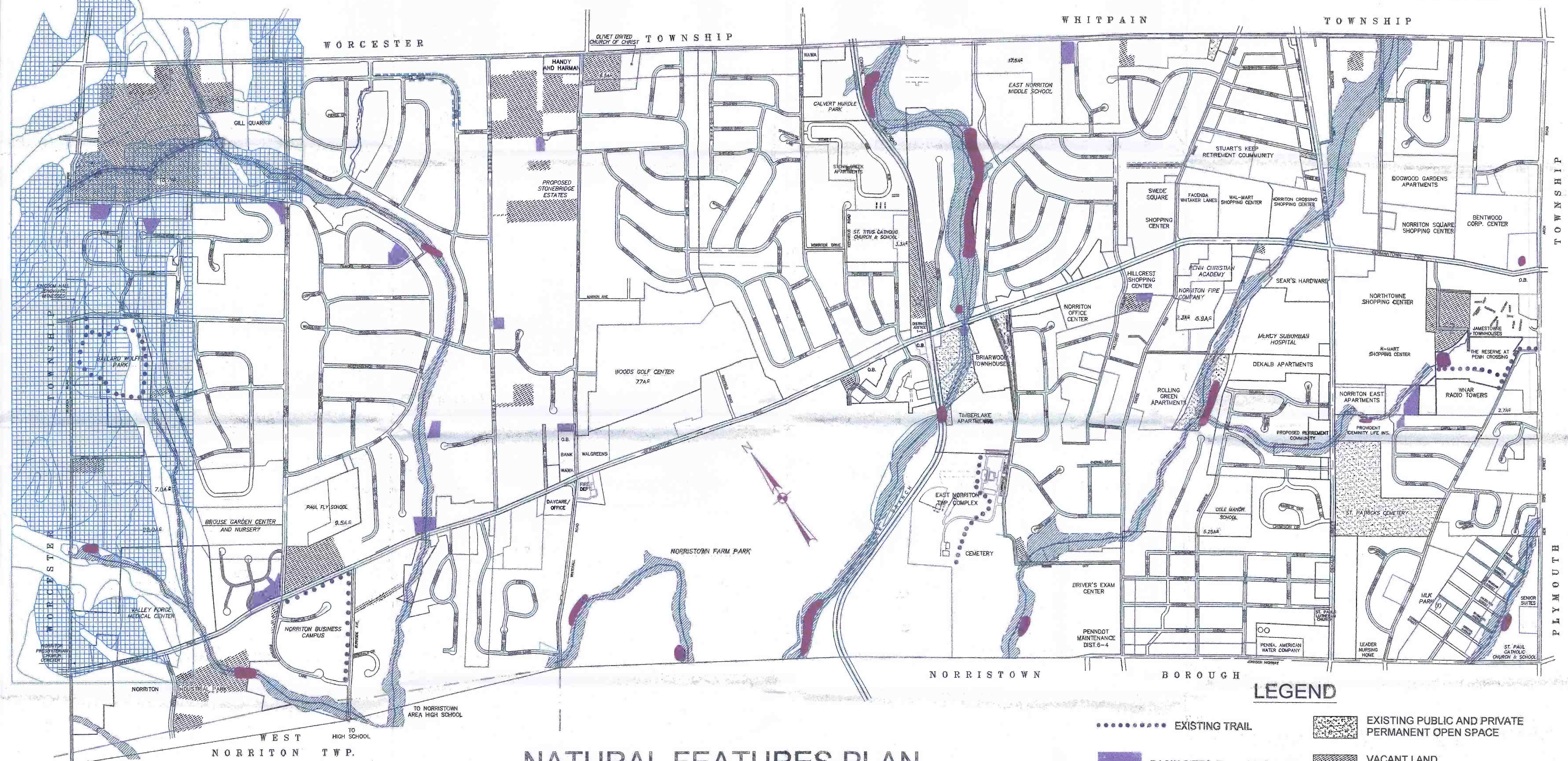
 AR - RESIDENTIAL DISTRICT	 RO - RESIDENTIAL / OFFICE	 EC2 - EXECUTIVE CAMPUS
 BR - RESIDENTIAL DISTRICT 10,00 Sq.Ft. Lot Min	 RP - RESIDENTIAL & PROFESSIONAL DISTRICT	 EC - EXECUTIVE CAMPUS
 BR1 - RESIDENTIAL DISTRICT 7,500 Sq.Ft. Lot Min	 BP - BUSINESS & PROFESSIONAL DISTRICT	 IN - INSTITUTIONAL DISTRICT
 CR - RESIDENTIAL DISTRICT	 C - COMMERCIAL DISTRICT	 LI - LIMITED INDUSTRIAL DISTRICT
 MR - MEDIUM DENSITY RESIDENTIAL	 C1 - COMMERCIAL DISTRICT	 I - INDUSTRIAL DISTRICT
 GA - GARDEN APARTMENTS	 SC - SHOPPING CENTER	 HI - HEAVY INDUSTRIAL DISTRICT
 HR - HIGH RISE RESIDENTIAL DISTRICT		 RR - RETIREMENT RESIDENTIAL



NEXT LEVEL MAPPING LLC.
 1444 Phoenixville Pike
 West Chester, PA 19380
 (610) 454-1590

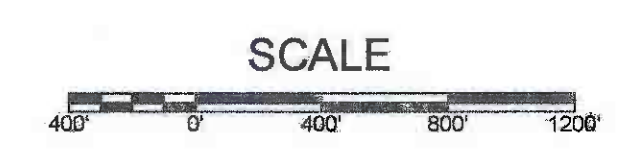
Printed: 10/05/2005

FIGURE 1-2



NATURAL FEATURES PLAN
 EAST NORRITON TOWNSHIP
 MONTGOMERY COUNTY, PENNSYLVANIA

- LEGEND**
- EXISTING TRAIL
 - BASIN SITES (Township/Private)
 - STREAM
 - 100 YR FLOOD PLAIN AS PER FEMA FIRM MAPS
 - FLOOD PLAIN BY ALLUVIAL SOILS. SOURCE: U.S. DEPT. OF AGRICULTURE SOIL CONSERVATION DISTRICT, MONTGOMERY COUNTY SOIL SURVEY, DATED APRIL, 1967.
 - EXISTING PUBLIC AND PRIVATE PERMANENT OPEN SPACE
 - VACANT LAND (1.0 Ac. AND LARGER OR COUNTRY ESTATES GREATER THAN TEN ACRES)
 - WETLANDS
 - LIMITING SOILS FOR O.L.D.S.



NOVEMBER 2005

FIGURE 2-1

