

**BEFORE THE
PENNSYLVANIA PUBLIC UTILITY COMMISSION**

Meghan Flynn	:	
Rosemary Fuller	:	
Michael Walsh	:	
Nancy Harkins	:	C-2018-3006116
Gerald McMullen	:	P-2018-3006117
Caroline Hughes and	:	
Melissa Haines	:	

v.

Sunoco Pipeline, L.P.

Melissa DiBernardino

v.

Sunoco Pipeline, L.P.

Rebecca Britton

v.

Sunoco Pipeline, L.P.

Laura Obenski

v.

Sunoco Pipeline, L.P.

INTERVENOR WEST CHESTER AREA SCHOOL DISTRICT'S HEARING EXHIBITS

THURSDAY, OCTOBER 24, 2019

*C-2018-3006116
10/24/19 West Chester
JK*

INDEX

1. Table of Students/Faculty
2. West Chester Area School District Map – Elementary School Boundaries
3. Pennsylvania Pipeline Project Map – Existing Mariner East Pipeline to East Goshen Elementary School
4. Pennsylvania Pipeline Project Map – Existing Mariner East Pipeline to Exton Elementary School

School/Facilities	Number of Students	Number of Staff Members
East Bradford Elementary School	410	55
East Goshen Elementary School	442	54
Exton Elementary School	596	58
Fern Hill Elementary School	548	67
Glen Acres Elementary School	576	63
Hillsdale Elementary School	572	58
M.C.Howse Elementary School	624	56
Penn Wood Elementary School	503	51
Starkweather Elementary School	578	55
Westtown-Thornbury Elementary School	539	53
Fugett Middle School	870	99
Pierce Middle School	1091	114
Stetson Middle School	863	98
East High School	1232	178
Henderson High School	1337	184
Rustin High School	1297	189
Education Center	0	93
Warehouse	0	60
SUBTOTAL	12078	1585

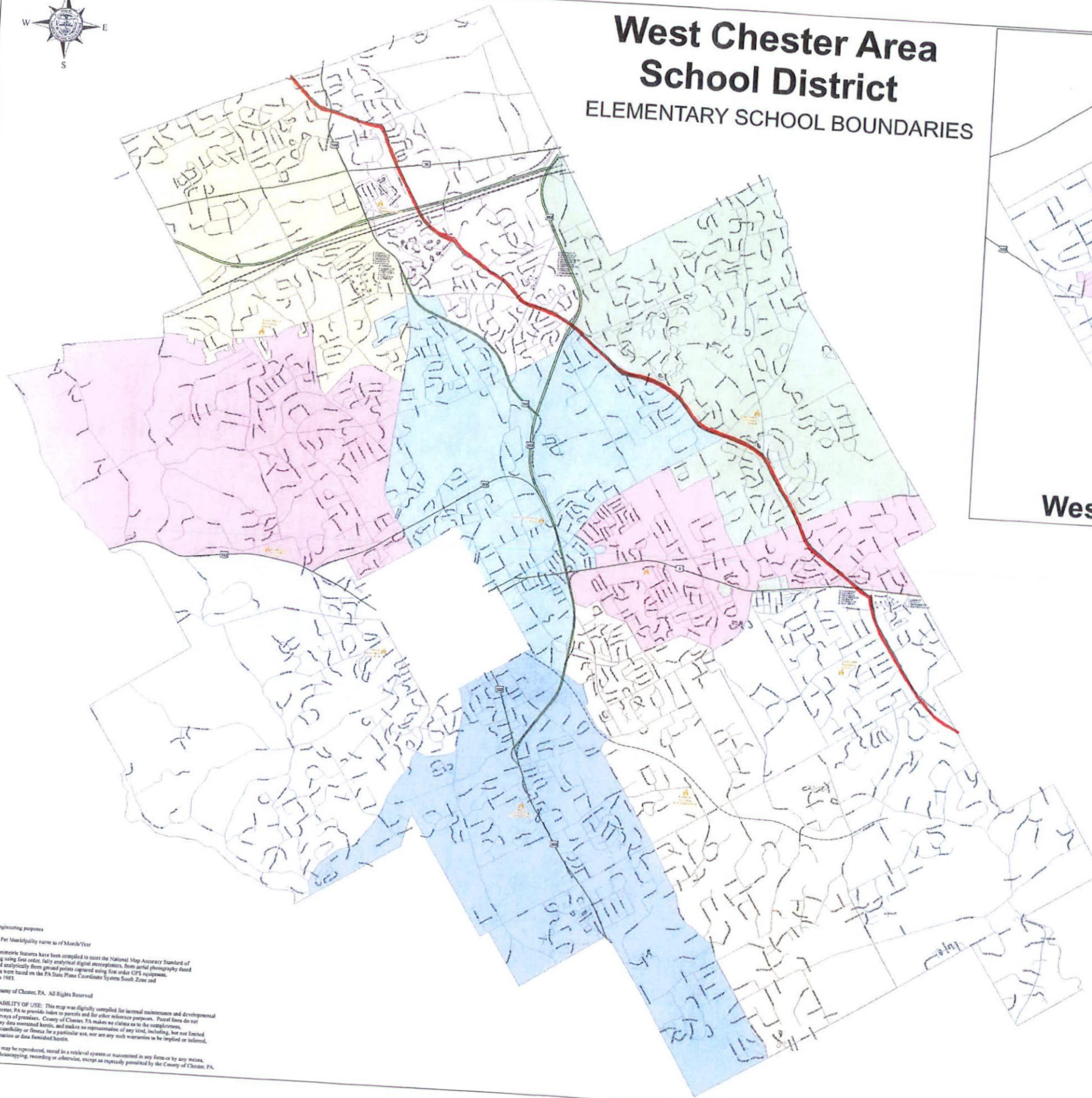
TOTAL (COMBINED)

13663



West Chester Area School District

ELEMENTARY SCHOOL BOUNDARIES



- Legend**
- ★ Elementary Schools
 - Rails
 - US Route
 - Road Centerlines
- ELEMENTARY**
- East Bradford Elementary
 - East Goshen Elementary
 - Exton Elementary
 - Fern Hill Elementary
 - Glen Acres Elementary
 - Hillsdale Elementary
 - Mary C Howse Elementary
 - Penn Wood Elementary
 - Sarah Starkweather Elementary
 - Westtown Thornbury Elementary

NOTES: Not for engineering purposes

Address data source: Per Municipality name as of Month/Year

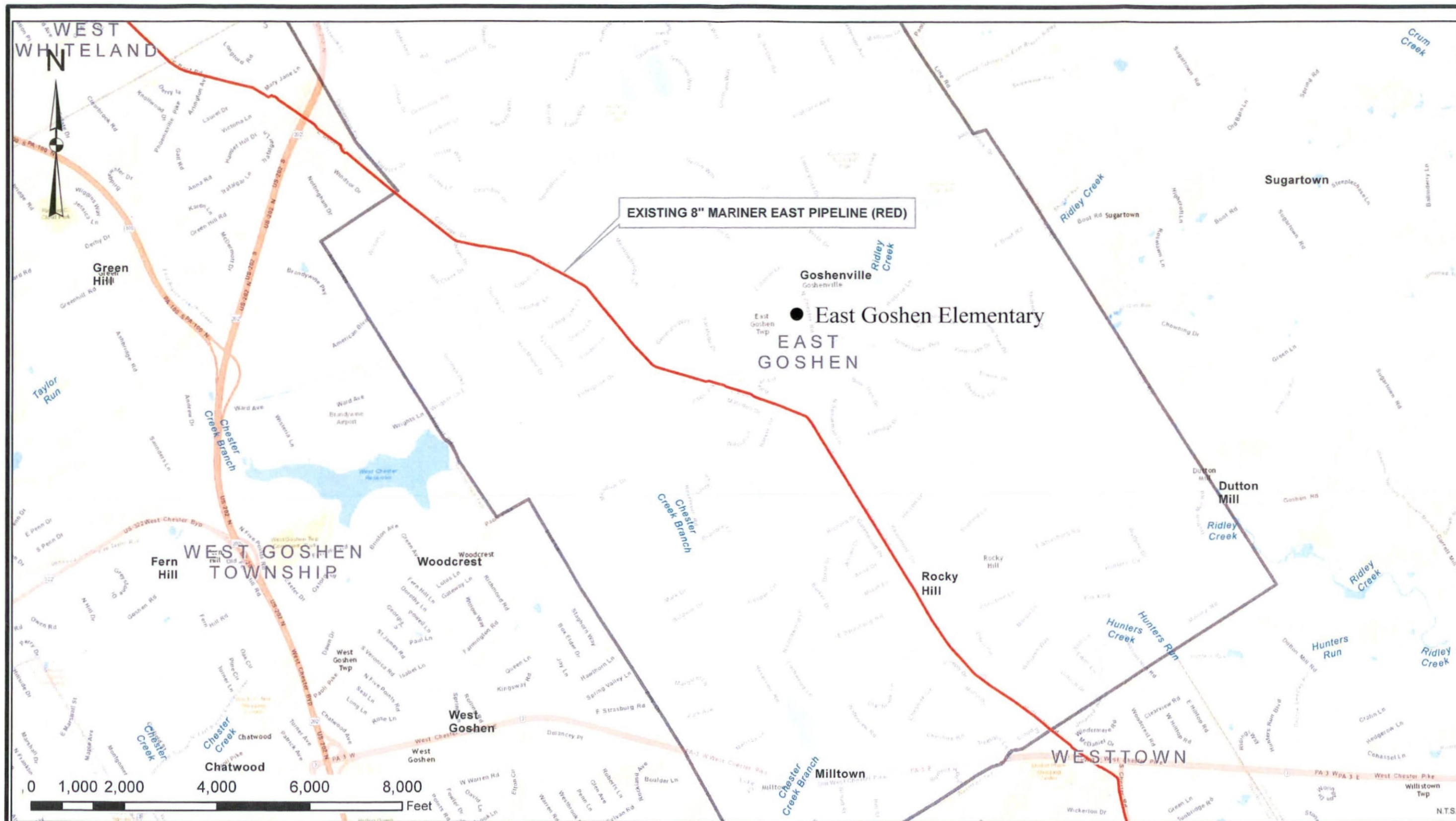
Landbase Source: Planimetric features have been compiled to meet the National Map Accuracy Standard of 1:24,000 scale mapping using first order, fully analytical digital stereoplotters, from aerial photography dated Spring 2010, corrected analytically from ground points captured using first order GPS equipment. Planimetric coordinates were based on the PA State Plane Coordinate System South Zone and North American Datum 1983.

Copyright (c) 2015, County of Chester, PA. All Rights Reserved

LIMITATION AND LIABILITY OF USE: This map was digitally compiled for internal maintenance and developmental use by the County of Chester, PA to provide index to parcels and for other reference purposes. Parcel lines do not represent actual field surveys of parcels. County of Chester, PA makes no claim as to the completeness, accuracy or source of any data contained herein, and makes no representation of any kind, including, but not limited to, the warranties of merchantability or fitness for a particular use, nor are any such warranties to be implied or inferred with respect to the information or data furnished herein.

No part of this document may be reproduced, stored in a retrieval system or transmitted in any form or by any means, electronic, mechanical, photocopying, recording or otherwise, except as expressly permitted by the County of Chester, PA.





LEGEND

GENERAL NOTES

1. ROONEY ENGINEERING, INC. AND/OR SUNOCO PIPELINE L.P. ARE NOT RESPONSIBLE FOR THE LOCATION OF THIRD-PARTY PIPELINES AND UTILITIES SHOWN ON THIS DRAWING. THIS INFORMATION IS PRESENTED ON A BEST-EFFORTS BASIS AND IS PROVIDED WITHOUT LIABILITY ON THE PART OF ROONEY ENGINEERING, INC. AND/OR SUNOCO PIPELINE L.P. FOR ANY DAMAGES RESULTING FROM ERRORS OR OMISSIONS IN THIS INFORMATION.
2. PRIOR TO COMMENCING ANY ACTIVITIES WHICH COULD IMPACT PIPELINES OR UTILITIES, CONTACT PENNSYLVANIA ONE CALL AT 811 OR 1-800-242-1778.

EXHIBIT WCASD-3

REVISIONS

REV	DESCRIPTION	DWN	CHKD	DATE
0	ISSUED FOR REVIEW	RMB	DCM	03/16/15

PENNSYLVANIA PIPELINE PROJECT
STATE: PENNSYLVANIA
COUNTY: CHESTER
TOWNSHIPS: EAST GOSHEN



PENNSYLVANIA PIPELINE PROJECT
CHESTER COUNTY, PA

TETRA TECH ROONEY

DRAWN: RMB DATE: 03/16/15 CHECKED: DCM
 ENLARGED: DCM SCALE: AS SHOWN
EAST GOSHEN TOWNSHIP

