



REINVESTMENT
FUND

Sustainable Development Fund

2021-2022 Report

About Reinvestment Fund

- Reinvestment Fund is a national mission-driven financial institution that creates opportunity for underserved people and places through partnerships. We marshal the capital, analytics, and expertise necessary to build strong, healthy, and more equitable communities.
- Since 1985, Reinvestment Fund has made **\$2.4 billion** in cumulative investments and loans.
- We are supported by over **830 investors** that include individuals, foundations, religious institutions, financial institutions, civic organizations and government.

STANDARD & POOR'S
RATINGS SERVICES

S&P
A+

AERIS
RATED
★★★★ AAA
POLICY PLUS

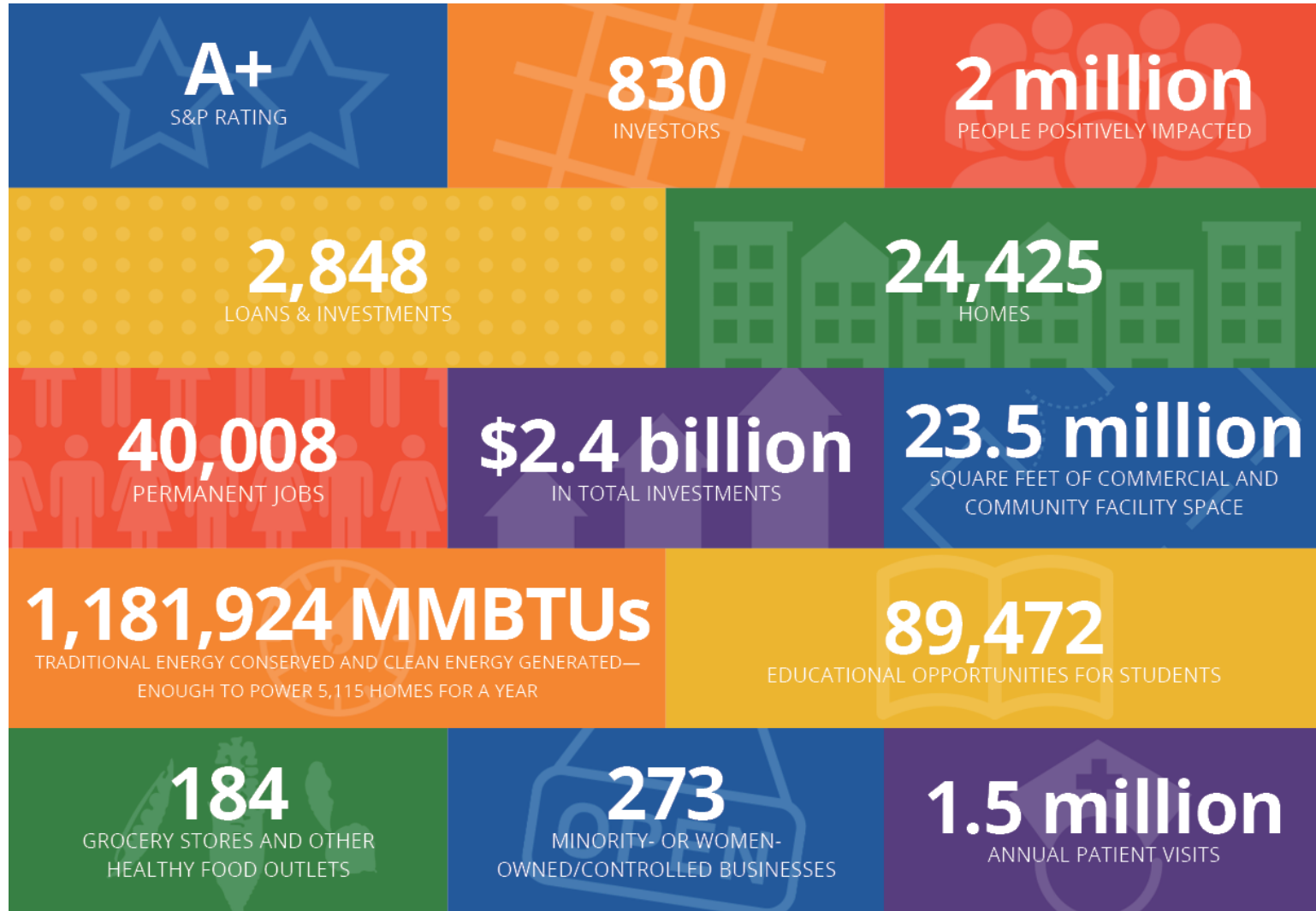
GSG
HONORS
2017
Global
Impact Asset
Manager



@ReinvestFund
Reinvestment.com



Our Impact in Numbers



2021 SDF Activity

Lending

- Majority of SDF lending capital was deployed in 2016, 2017, 2018 in ~7+ year loans that are still outstanding
- In 2021, \$2.4MM invested in one project (vs. \$2.3MM invested in 2020 across eight loans) using most of the available funds
 - \$2.4MM was a participation in a project with SEF and other funds to finance the manufacture and delivery of two transformers supporting a solar PV project
- Loan repayments and two compliance payments during the year resulted in \$3.4MM being available for lending at year end

Grantmaking

- No new grants in 2021

Governance and 2022 Agenda

SDF Board

- Two board meetings in January and December 2021
- Proposed the addition of two new board members
 - All current Board members reappointed, with one board member stepping down in 2021

Bylaws

- Board proposals include:
 - Adjustments to the length of the terms of board members, as well as how terms are staggered
 - number of required yearly meetings
 - Tailoring the mission to explicitly include projects that are emission reducing overall, even if they include increased electrical usage

Grant Program

- \$250k budgeted for 2022
- Reinvestment Fund will be allocating additional staff capacity to support grant making