



Operations
2839 New Beaver Avenue
Pittsburgh PA 15233

RECEIVED

JUN 08 2010

PA PUBLIC UTILITY COMMISSION
SECRETARY'S BUREAU

June 8, 2010

Secretary Rosemary Chiavetta
Pennsylvania Public Utility Commission
Commonwealth Keystone Building
400 North Street 2ND Floor
Harrisburg PA 17120

Dear Secretary Chiavetta:

Attached is Duquesne's major event exclusion report for the storm that occurred on Friday, April 16, 2010. Should you require additional information, please feel free to contact me at (412) 393-8401.

Sincerely,

Patrick J. Conti
Operations Center Manager

cc: John Clista
Darren Gill
Dennis Hosler
Blaine Loper
Dan Searforce

**REQUEST FOR EXCLUSION OF MAJOR OUTAGE FOR
RELIABILITY REPORTING PURPOSES TO
PENNSYLVANIA PUBLIC UTILITY COMMISSION
P O BOX 3265
HARRISBURG, PA 17105-3265**

Reports require an original and one copy to be filed with the Secretary's Bureau.

Information Required:

1. Reporting Utility: Duquesne Light Company
Address: 2839 New Beaver Avenue
Pittsburgh PA 15233

RECEIVED

JUN 08 2010

PA PUBLIC UTILITY COMMISSION
SECRETARY'S BUREAU

2. Name and title of person making report:

Patrick Conti
Operations Center Manager

3. Telephone Number:

(412) 393-8401

4. Interruption or Outage:

(a) Number of customers affected:

69,820 customers were affected throughout the course of this storm from a total of approximately 580,000 customers in our service territory.

837,830 KVA affected (12% of System Load)
System Connected Load of 7,050,027 KVA

At the peak of this storm, 36,000 customers experienced service interruptions.

(b) Number of troubled locations in each geographic area affected listed by county and local political subdivision:

ALLEGHENY COUNTY MUNICIPALITIES				
ARLINGTON HGTS	CASTLE SHANNON	JEFFERSON	NORTH BRADDOCK	SHALER
BALDWIN	CHALFANT	LIBERTY	NORTH VERSAILLES	STANTON HEIGHTS
BANKSVILLE	CHURCHILL	LINCOLN	NORTHSIDE	SWISSHELM PARK
BEECHVIEW	COLLIER TWP	LINCOLN PLACE	O'HARA	SWISSVALE
BELTZHOVER	CORAOPOLIS	MCCANDLESS	OAKMONT	TURTLE CREEK
BEN AVON HEIGHTS	DORMONT	MCKEESPORT	PENN HILLS	VERSAILLES
BETHEL PARK	DRAVOSBURG	MONROEVILLE	PLEASANT HILLS	WEST MIFFLIN
BLAWNOX	DUQUESNE	MOON	POINT BREEZE	WHITE OAK
BON AIR	EAST PITTSBURGH	MOUNT OLIVER	PORTVUE	WHITEHALL
BRADDOCK	EDGEWOOD	MT LEBANON	RANKIN	WILKINS TWP
BRENTWOOD	FOREST HILLS	MT WASHINGTON	ROBINSON TWP	WILKINSBURG
BROOKLINE	GREENTREE	MUNHALL	ROSS	WILMERDING
CARRICK	HAZELWOOD	NEW HOMESTEAD	SCOTT TWP	

BEAVER COUNTY MUNICIPALITIES		
BRIGHTON TWP	FINDLAY	HOPEWELL
ECONOMY	GREENE	INDEPENDENCE

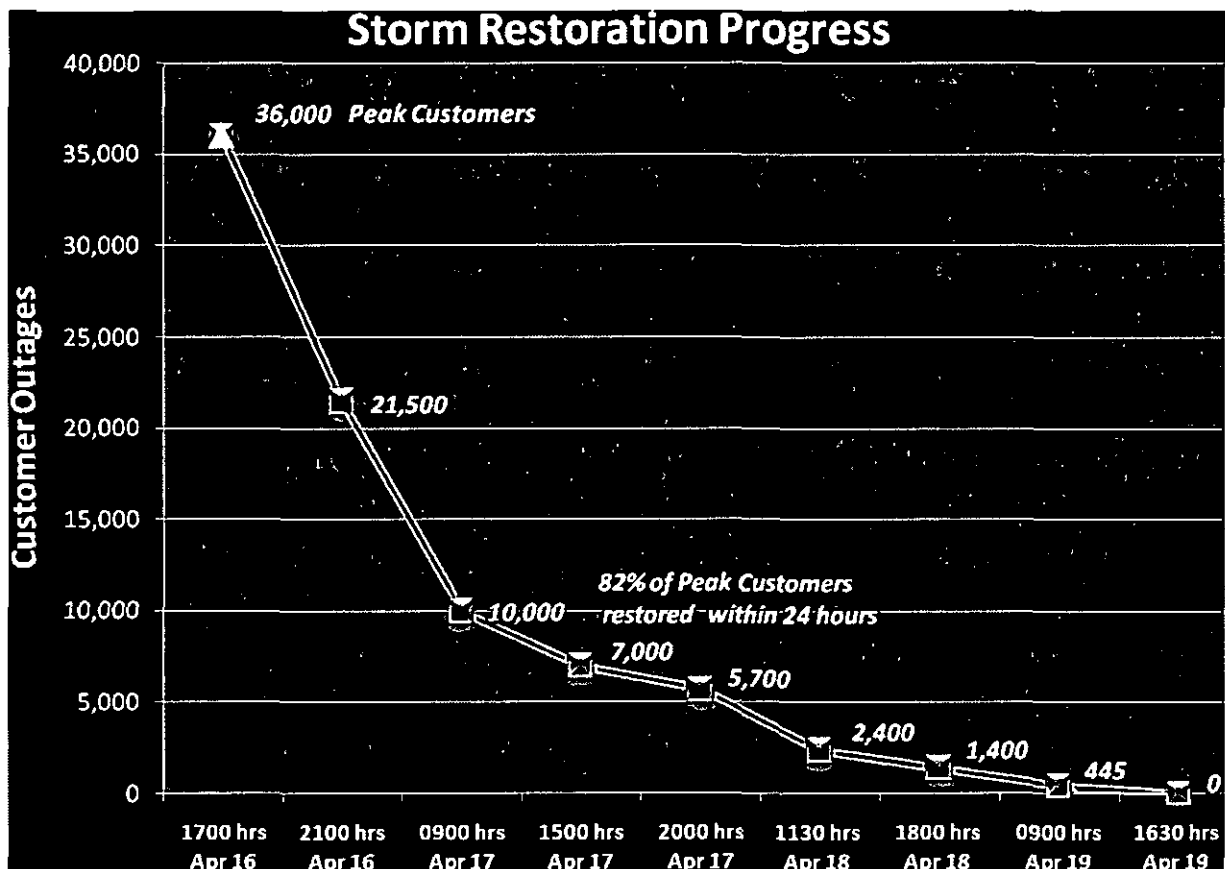
(c) Reason for interruption or outage, including weather data where applicable:

On Friday, April 16, 2010, at approximately 1530 hours, severe thunderstorms with damaging lightning, high winds, and heavy rains moved through Duquesne Light's service area in Allegheny and Beaver counties.

At 1330 hours, the National Weather Service (NWS) had issued Severe Thunderstorm Watch 71 in effect until 2000 hours. The forecast called for a cold front to move southeast across the region during the evening hours bringing showers and thunderstorms, some of which would be severe. Behind the front would be much cooler air.

At 1523 hours, the NWS issued severe thunderstorm warnings for both Allegheny and Beaver counties until 1630 hours. At 1553 hours, the Allegheny County Airport in West Mifflin reported a wind gust of 66 mph. The NWS indicated that the unseasonably warm weather contributed to the intensity of these storms. The high temperature on Friday was 80 degrees.

Duquesne Light held crews, activated its Storm Team, and initiated around the clock coverage until the last customer was restored. Company personnel staffed the Allegheny County 911 Center. A helicopter was utilized to patrol our transmission and sub-transmission lines to further identify trouble.



Repair work included replacing 180 primary wires & equipment, 310 secondary wires, 37 broken poles and 23 transformers.

Duquesne responded to over 46,975 reports of service-related trouble from our customers which included: 1,038 wires down, 1,331 emergencies, 431 trees on lines, 93 damaged poles and 44,082 no-lights.

This storm response effort included: 194 overhead workers, 44 troubleshooters, 25 underground workers, 8 substation workers, 25 contractor vegetation workers, along with 117 electrical contractors including 48 Henkels & McCoy, 16 Sargent, 13 Bruce & Merrilees and 40 from Thompson Electric.

This workforce was supplemented utilizing our Emergency Response Team in Operations, Transmission & Distribution Construction/Maintenance, Customer Services, Media Relations, Materials and Transportation. Overall, an estimated 570 personnel contributed to this restoration effort.

(d) The number of utility workers and others assigned specifically to the repair work:

Overall, an estimated 570 personnel contributed to this restoration effort.

(e) The date and time of the first notification of a service interruption:

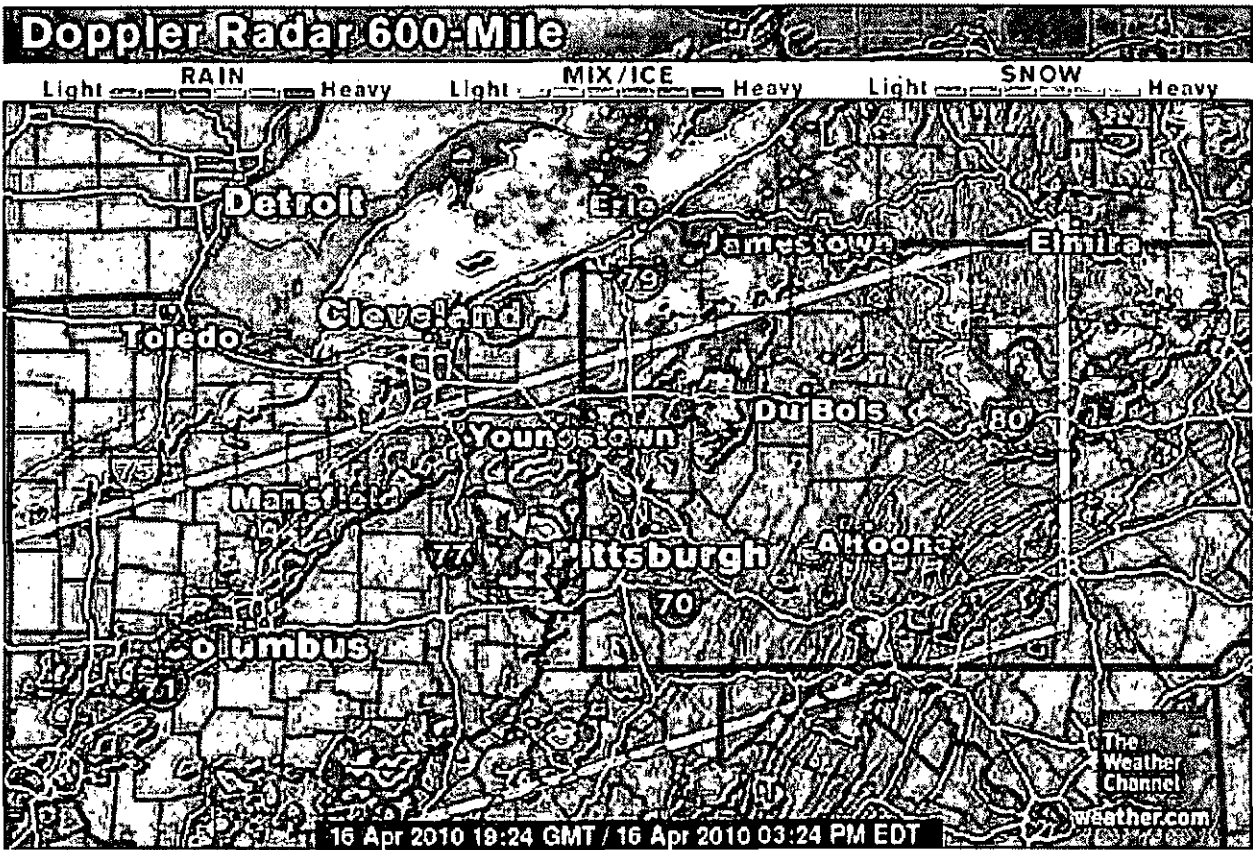
Friday, April 16, 2010, at approximately 1530 hours.

(f) The actual time that service was restored to the last affected customer:

Restoration for the last customer affected by this storm was at 1630 hours on Monday, April 19, 2010.

Remarks:

- Weather information is attached. Photos are attached. News articles are attached.
- Outage information was communicated to our customers and the media at regular intervals on the home page of our Duquesne Light web site (www.duquesnelight.com). Our website was activated on Friday, April 16, 2010 and was updated several times a day through April 19, 2010. Simultaneous updates were sent to Twitter.



**Issued by The National Weather Service
Pittsburgh, PA**

1:30 pm EDT, Fri., Apr. 16, 2010

THE NATIONAL WEATHER SERVICE HAS ISSUED SEVERE THUNDERSTORM WATCH 71 IN EFFECT UNTIL 8 PM EDT THIS EVENING FOR THE FOLLOWING AREAS

IN SOUTHWEST PENNSYLVANIA

ALLEGHENY BEAVER FAYETTE GREENE WASHINGTON WESTMORELAND

IN WEST CENTRAL PENNSYLVANIA

ARMSTRONG BUTLER CLARION INDIANA JEFFERSON PA LAWRENCE

IN WEST VIRGINIA THIS WATCH INCLUDES 9 COUNTIES

IN NORTHERN PANHANDLE OF WEST VIRGINIA

BROOKE HANCOCK MARSHALL OHIO

IN NORTHERN WEST VIRGINIA

MARION MONONGALIA PRESTON TUCKER WETZEL

THIS INCLUDES THE CITIES OF... ALIQUIPPA... AMBRIDGE... APOLLO... BARNESVILLE... BEAVER... BEAVER FALLS... BELLAIRE...

BRIDGEPORT... BROCKWAY... BROOKVILLE... BUTLER... CADIZ... CALCUTTA... CALDWELL... CALIFORNIA... CAMBRIDGE...

CANONSBURG... CARROLLTON... CHARLEROI... CLARION... COLUMBIANA... CONNELLSVILLE... COSHOCTON... DAVIS... DONORA...

DOVER... EAST LIVERPOOL... EAST PALESTINE... ELLWOOD CITY... FAIRDALE... FAIRMONT... FARRELL... FORD CITY... FRANKLIN...

FREEPORT... GRANTSVILLE... GREENSBURG... GREENVILLE... GROVE CITY... HERMITAGE... HOPEDALE... INDIANA... JEANNETTE...

KINGWOOD... KITTANNING... LATROBE... LEECHBURG... MARTINS FERRY... MCMURRAY... MONACA... MONESSEN...

MONONGAHELA... MORGANTOWN... MOUNDSVILLE... NEW CASTLE... NEW KENSINGTON... NEW MARTINSVILLE... NEW

PHILADELPHIA... OAKLAND MD... OHIOPYLE... OIL CITY... PARSONS... PITTSBURGH METRO AREA... PUNXSUTAWNEY...

REYNOLDSVILLE... SALEM... SHADYSIDE... SHARON... ST. CLAIRSVILLE... STEUBENVILLE... SUGARCREEK... TERRA ALTA... THOMAS...

TIONESTA... TORONTO... UHRICHSVILLE... UNIONTOWN... WASHINGTON... WAYNESBURG... WEIRTON... WELLSVILLE...

WHEELING... WOODSFIELD... ZANESVILLE AND ZELIENOPLE.

Issued by The National Weather Service
Pittsburgh, PA
3:23 pm EDT, Fri., Apr. 16, 2010

THE NATIONAL WEATHER SERVICE IN PITTSBURGH HAS ISSUED A

* SEVERE THUNDERSTORM WARNING FOR... EASTERN COLUMBIANA COUNTY IN EAST CENTRAL OHIO... EAST CENTRAL JEFFERSON COUNTY IN EAST CENTRAL OHIO... WESTERN ARMSTRONG COUNTY IN WEST CENTRAL PENNSYLVANIA... NORTHERN WASHINGTON COUNTY IN SOUTHWEST PENNSYLVANIA... ALLEGHENY COUNTY IN SOUTHWEST PENNSYLVANIA... NORTHWESTERN WESTMORELAND COUNTY IN SOUTHWEST PENNSYLVANIA... BEAVER COUNTY IN WESTERN PENNSYLVANIA... BUTLER COUNTY IN WEST CENTRAL PENNSYLVANIA... SOUTHWESTERN CLARION COUNTY IN WEST CENTRAL PENNSYLVANIA... SOUTHERN LAWRENCE COUNTY IN WESTERN PENNSYLVANIA... NORTHEASTERN OHIO COUNTY IN NORTHERN WEST VIRGINIA... BROOKE COUNTY IN NORTHERN WEST VIRGINIA... HANCOCK COUNTY IN NORTHERN WEST VIRGINIA...

* UNTIL 430 PM EDT

* AT 324 PM EDT... NATIONAL WEATHER SERVICE DOPPLER RADAR INDICATED A LINE OF SEVERE THUNDERSTORMS CAPABLE OF PRODUCING DESTRUCTIVE WINDS IN EXCESS OF 70 MPH. THESE STORMS WERE LOCATED ALONG A LINE EXTENDING FROM EAST PALESTINE TO WEST LIBERTY... MOVING EAST AT 50 MPH.

* OTHER LOCATIONS IN THE WARNING INCLUDE BUT ARE NOT LIMITED TO WELLSBURG... WEIRTON... TOMLINSON RUN STATE PARK... NEWELL... NEW MANCHESTER... NEW CUMBERLAND... FOLLANSBEE... CHESTER... TORONTO... STEUBENVILLE... MINGO JUNCTION... EAST PALESTINE... PITTSBURGH METRO AREA

0353 PM TSTM WND GST WEST MIFFLIN 40.36N 79.91W
04/16/2010 M66.00 MPH ALLEGHENY PA ASOS

WIND REPORTED AT THE ALLEGHENY COUNTY AIRPORT FROM WEST AT 66 MPH.

0355 PM TSTM WND DMG CASTLE SHANNON 40.37N 80.02W
04/16/2010 ALLEGHENY PA TRAINED SPOTTER

UTILITY POLE REPORTED SNAPPED IN TWO BY STROND WINDS.

AREA FORECAST DISCUSSION
NATIONAL WEATHER SERVICE PITTSBURGH PA
144 PM EDT FRI APR 16 2010

.SYNOPSIS...

-- Changed Discussion --

A COLD FRONT WILL MOVE SOUTHEAST ACROSS THE REGION THIS EVENING WITH SHOWERS AND THUNDERSTORMS...SOME OF WHICH MAY BE SEVERE. BEHIND THE FRONT IT WILL BE MUCH COOLER FOR THE WEEKEND A CHANCE FOR SHOWERS.

Warning expires but storms take down power lines

Pittsburgh Post-Gazette

Friday, April 16, 2010

A brief but powerful thunderstorm swept through the Pittsburgh area late this afternoon, taking down power lines and knocking out traffic lights. There was also a report of a tree down on a moving vehicle in Ross.

A severe thunderstorm warning for the Pittsburgh area expired at 4:30 p.m., about an hour after the National Weather Service in Pittsburgh issued it. But it was still in effect for communities east of Allegheny County until 5 p.m. as the storm moved east at 50 mph.

Just after 4 p.m. the storm began causing damage in Pittsburgh and its suburbs.

The high winds knocked down power lines in some areas. Traffic signals were out at Banksville Road and Potomac Avenue, and also on Brownsville Road near Arlington Avenue. Railroad crossing lights were out at the Poplar light-rail stop in Mt. Lebanon. Wires are down at Pioneer and West Liberty in Brookline.

City fire crews were fighting a fire at a house on Fernleaf Street at Arlington Avenue, but it wasn't immediately known whether the fire was started by the storm.

There was also a report that a tree fell onto a moving vehicle on Rochester Road in Ross, blocking the roadway.

A thunderstorm watch will remain in effect until 8 p.m.

Storms make a real mess throughout the region

Saturday, April 17, 2010

By Moriah Balingit, Pittsburgh Post-Gazette

A potent mix of thunderstorms and high-speed winds sheared roofs, downed trees and power lines and snapped poles in half as a storm system moved across the western end of the state, leaving about 100,000 customers without power and several buildings damaged from fallen trees or from wind whose speeds topped out over 80 mph.

National Weather Service meteorologists said the unseasonably warm weather earlier in the day contributed to the intensity of the storms Friday. The National Weather Service recorded a high of 80 for Pittsburgh, just six degrees short of the record for the day, set in 2002.

But later, a cluster of thunderstorms moving ahead of a cold front moved in from central Ohio, slamming the region in the late afternoon. The cold front, which settled into the area last night, will mean chillier temperatures throughout the weekend.

Ominous storm clouds rolled into the region in the late afternoon Friday, delivering intermittent periods of torrential rains, dramatic gusts of winds and thunder and lightning. At Allegheny County Airport in West Mifflin, the National Weather Service recorded a 66-mph wind gust.

Between 4 p.m. and 5 p.m., the storm moved east, hammering Westmoreland and Fayette counties. The record for wind speed for the region Friday -- 86 mph -- was recorded in Latrobe. By yesterday evening, the storm had lost its steam, but nearly 22,000 Duquesne Light customers were still without power.

In Braddock, the roofs of four buildings on Braddock Avenue were taken off when a sustained burst of wind ripped through the town, said Mayor John Fetterman. He, along with much of the town, was without power last night.

Among the structures damaged was a commercial building that houses a day care center and a dental clinic. "The whole third floor is literally gone," he said.

Hardest hit in the city were the South Hills neighborhoods, said Rob Kaczorowski, head of the city's Department of Public Works. As of Friday evening, the city was working to remove 25 to 30 downed trees, some of which closed arterial roadways, like Brownsville Road, intermittently throughout the day. Many of the felled trees took power lines with them, leaving many city residents without power.

Further south in Mt. Lebanon, authorities were trying to handle "dozens" of fallen trees, said Lt. Mike Gallagher of the Mt. Lebanon Police Department. Some had fallen close enough to homes to cause just "minor damage," he said. But none blocked arterial roadways.

In McKeesport, Ted Gibala, who is the chairman of the Holy Family Polish National Catholic Church and lives in the church rectory, was not so lucky. Mr. Gibala, who lives in the rectory with his wife, was sitting in his living room when he heard a rumble and then a boom. A pine tree had fallen through the corner of his house, slamming through the roof and the attic. It remains suspended above his ceiling, and a hole in the side of the home let water pour in. Still, he considers himself fortunate. "I was only sitting 15 feet away," he said. "I probably could have been seriously hurt or killed."

Through the weekend, the cold front accompanying the storm will mean chillier temperatures more typical of the year, said meteorologist Alicia Smith with the National Weather Service. Today temperatures in the mid-40s are expected, with a 20 percent chance of rain. On Sunday, the high will hover around the mid-50s.

ThePittsburghChannel.com

Severe Storms Cause Damage Throughout Pittsburgh Area

West Mifflin School Roof, Murrysville Baseball Dugout Damaged

POSTED: 5:18 pm EDT April 16, 2010

UPDATED: 1:13 am EDT April 17, 2010

PITTSBURGH -- Severe thunderstorms blew through western Pennsylvania late Friday afternoon, causing damage to buildings and knocking out power in several areas.

As of late Friday night, Allegheny Power was reporting more than 57,000 customers were experiencing outages, the majority in Washington and Westmoreland counties.

Duquesne Light also said that it has 19,000 customers without service.

In West Mifflin, police said part of the roof at New Emerson Elementary School on Pennsylvania Avenue blew off. No injuries were reported.

"We had the roofers up here. We had the architect up here to basically check to make sure everything is structurally safe and it is," said Superintendent Janet Sardon.

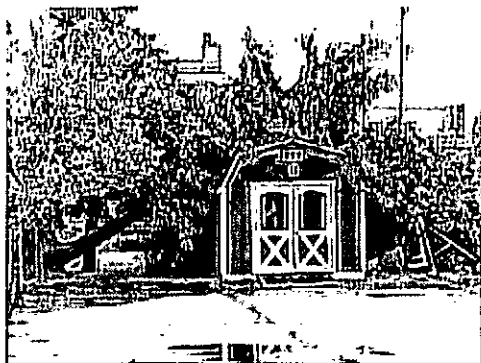
On Maryland Avenue in West Mifflin, a tree landed on the roof of a house, while another tree fell onto a shed down the street.

In Mt. Lebanon, tree and power lines were found scattered across streets.

On Racine Avenue, an uprooted tree damaged a driveway and utility pole.



Images: Photos Of Western Pa. Storm Damage - April 16, 2010



"To the right of me, I heard this giant crack and I looked to the right and that's what I saw," said Taylor Brandy.

In Braddock, piles of roofs and twisted metal remain after strong winds blew through the area.

A building was found crumbled near Woodlawn and 6th streets.

In Murrysville, Westmoreland County, the roof came off the visitors' dugout at Haymaker Field on Senior Night for the Franklin Regional High School baseball team. No injuries were reported. Channel 4 Action News viewer Mike Venditti shared photos with ThePittsburghChannel.com.



Also in Westmoreland County, strong winds damaged the West Newton United Presbyterian Church. "It got real dark and the wind was blowing hard and it started to rain," said Rev. Patrick Sileo. "A portion of the wall on the back of the sanctuary fell onto the roof and collapsed into the new roof that we put on in the fall."

The church said it will hold Sunday's 10 a.m. service at the West Newton gym.

In Jefferson Hills, the framework of a new home that was under construction on Woodwind Drive collapsed.

Trees were down on the side of Bella Drive in Greensburg, and branches were scattered across the road. A severe thunderstorm warning was in effect for several counties in the Pittsburgh area. Other areas were under a severe thunderstorm watch.

Storm Downs Trees, Knocks Out Power In Pittsburgh Area

Posted: 4:11 pm EDT April 16, 2010 Updated: 11:08 pm EDT April 16, 2010

PITTSBURGH -- Spring thunderstorms that swept through the Pittsburgh area downed trees and utility lines, caused power outages and closed roads.

Duquesne Light said about 36,000 customers were without power as of 6 p.m., But by 11 p.m. that number was down to 19,000.

The hardest hit areas were McKeesport, Monroeville, North Versailles, Brookline, Pleasant Hills, Scott Township, West Mifflin and White Oak.

At 11 p.m., Allegheny Power said it had 59,203 customers still without power. That was down from 71,000 at 6 p.m.

Throughout the afternoon, authorities reported downed trees and utility lines throughout the Pittsburgh region.

On Vernon Drive in Mt. Lebanon trees and limbs were down. Bob Kushner who lives on the street said, "We heard huge gust of wind come through. I looked out and I saw all of this damage."

Mike Ackerman had just gotten home from school. He said his mother had just told him to turn off the computer when the storm hit.

"All of a sudden I looked outside, a big tree just toppled over," Ackerman said.

Trees were down along Route 19 in Mt. Lebanon, forcing authorities to restrict traffic to one lane.

Wires were down on Copperfield Road.

In Carrick, a section of Brownsville Road was closed between Birmingham Avenue and the Boulevard.

In Ross Township, a car crashed into a tree that fell down on Rochester Road. The driver was not seriously hurt.

In West Mifflin, tiles were ripped off the roof of Emerson Elementary school just a short time after students were dismissed. Most of the damage was over the gym area and water did leak inside.

Crews will clean up inside the school Saturday and on Monday they will start fixing the roof.

The superintendent said the building has been checked out and is ok.

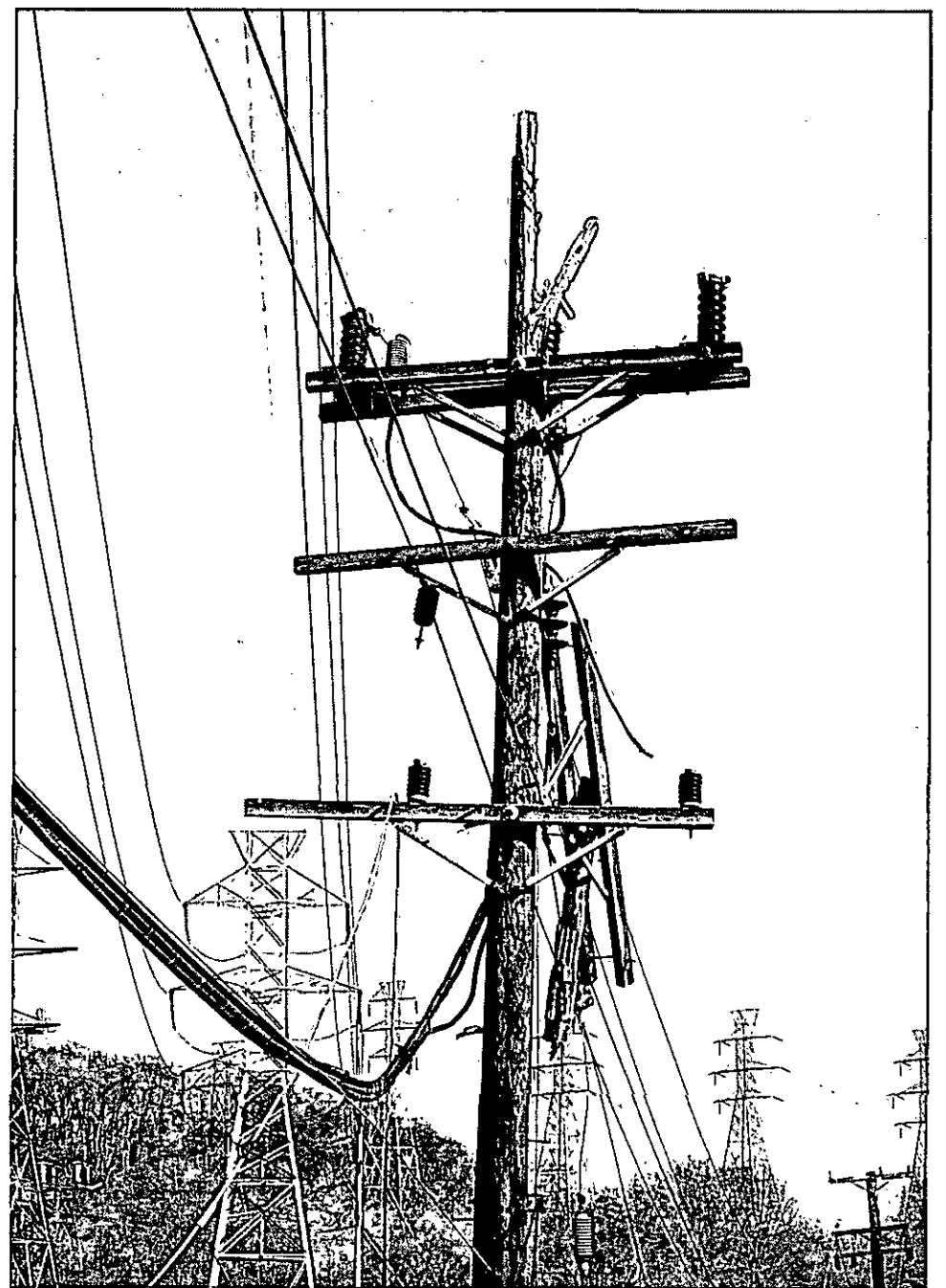
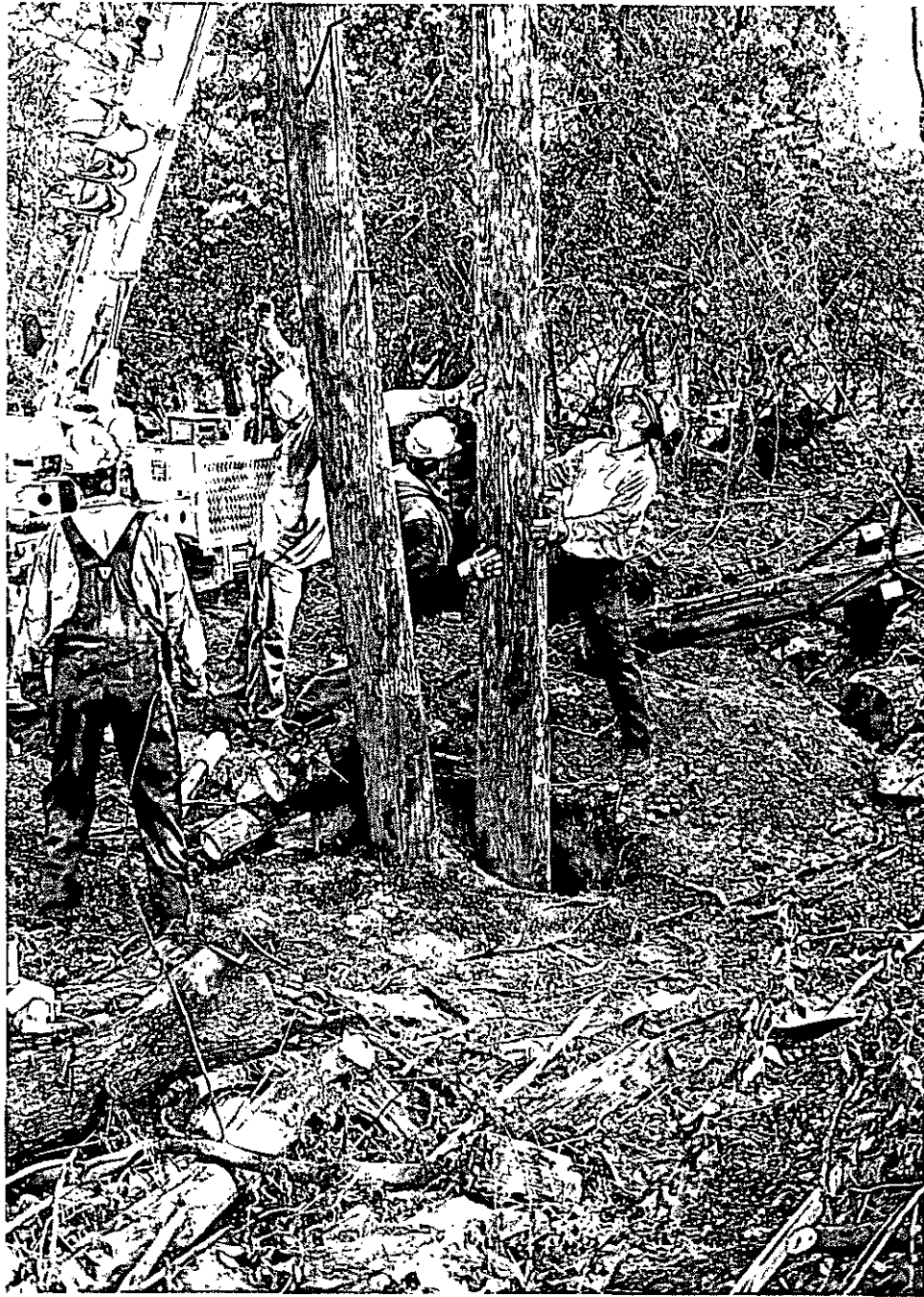
In Braddock, the storm severely damaged the roofs of three buildings and partially collapsed a wall on the back of a building that housed a day care center. No one was inside when the storm hit and no one was injured.

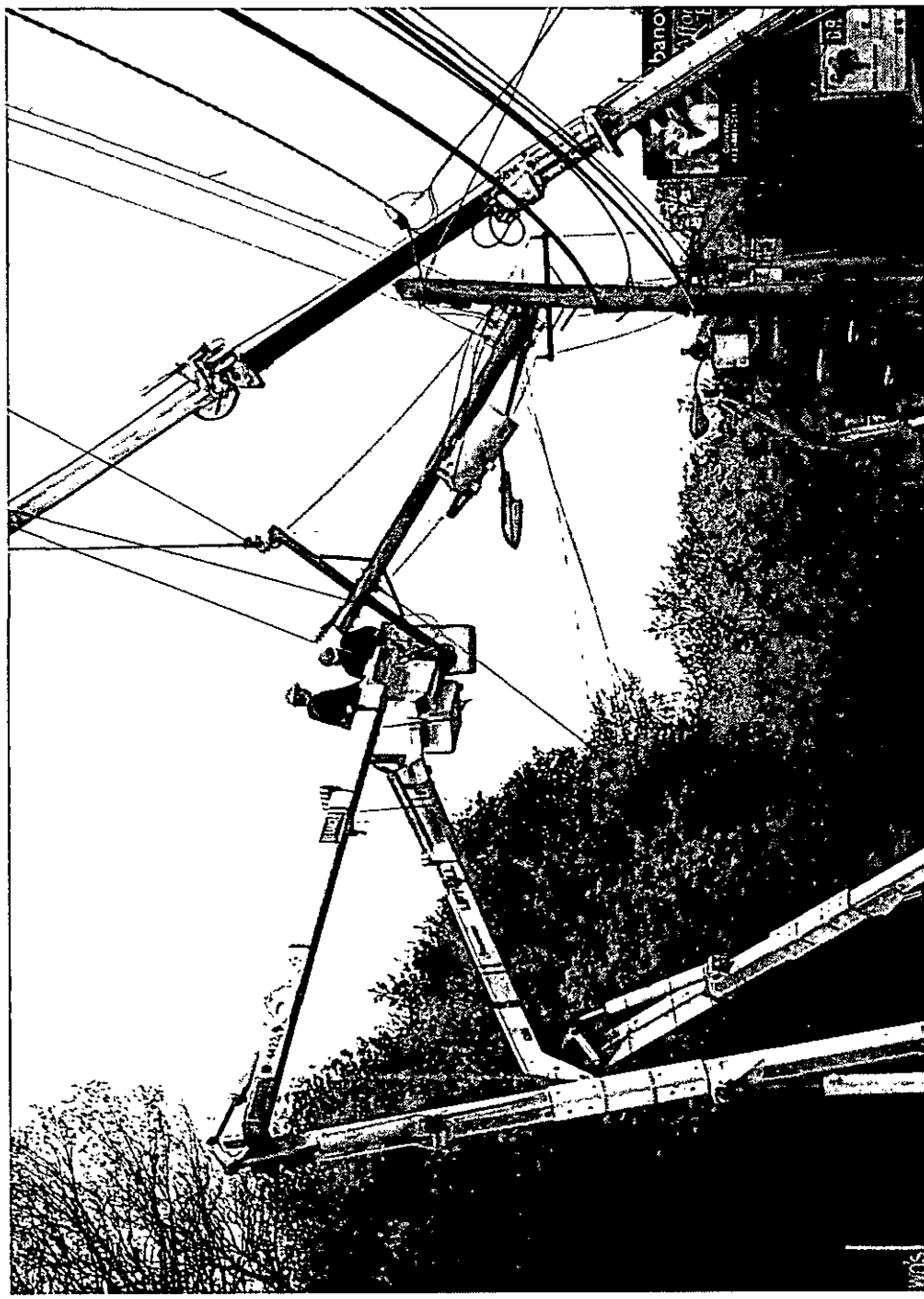
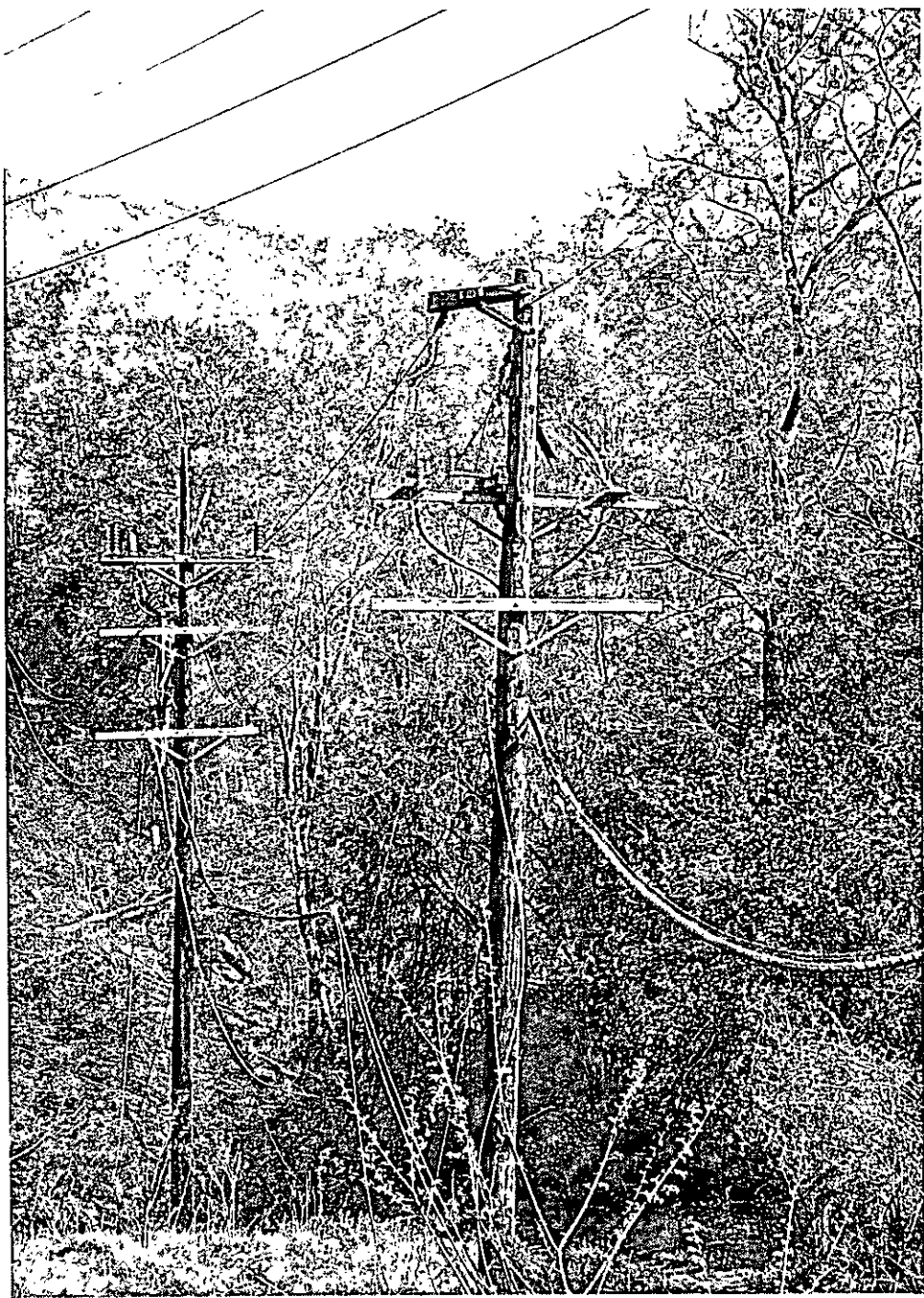
"From reports that I got over the telephone, they said the winds seemed like they were about 60, 70 mph, maybe higher through town," Fire Chief Thomas Petrovic said.

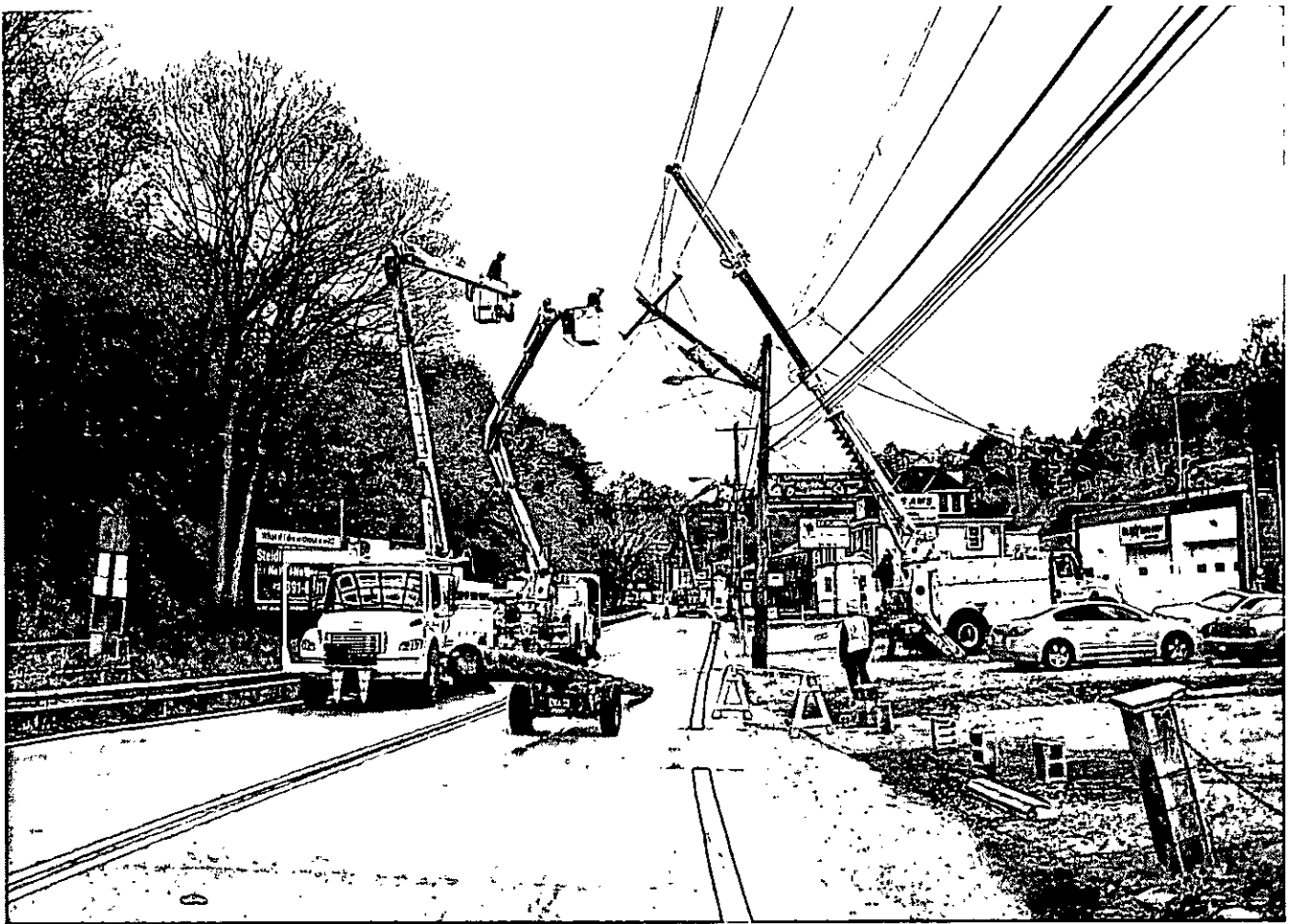
Washington County emergency dispatchers reported utility lines down across all four lanes of Interstate 70 near Bentleyville.

At the Arnold Palmer Regional Airport in Latrobe, Westmoreland County, strong wind gusts pushed an unsecured aircraft into a fence, officials said. Downed trees and power lines were also reported in North Strabane Township and Canonsburg in Washington County.









EXTREMELY URGENT Please Rush To Addressee

Schedule package pickup right from your home or office at usps.com/pickup

Print postage online - Go to usps.com/postageonline



1007

U.S. POSTAGE
PAID
PITTSBURGH, PA 15201
JUN 08
AMOUNT
\$15.00
000569

PLEASE PRESS FIRMLY

PLEASE PRESS FIRMLY



UNITED STATES POSTAL SERVICE

Legal Size Envelope

For Domestic and International Use



When used internationally,
affix customs declaration
(PS Form 2976, or 2976A)

TO: CHIAVETA, R. PUC (CHIAVETA)
Agency: PUC
Floor:
External Carrier: Express Mail



EG298973919US



EG298973919US

(EG298973919US)

ORIGIN (POSTAL SERVICE USE ONLY)		
PO ZIP Code 15233	Day of Delivery <input checked="" type="checkbox"/> Next <input type="checkbox"/> 2nd <input type="checkbox"/> 2nd Del. Day	Postage \$ 15.90
Date Accepted 6 8 10 Mo. Day Year	Scheduled Date of Delivery Month 6 Day 9	Return Receipt Fee \$
Time Accepted 11:45 <input type="checkbox"/> AM <input checked="" type="checkbox"/> PM	Scheduled Time of Delivery <input type="checkbox"/> Noon <input type="checkbox"/> 3 PM	GOD Fee \$
Flat Rate <input type="checkbox"/> or Weight lbs. 6 ozs.	Military <input type="checkbox"/> 2nd Day <input type="checkbox"/> 3rd Day	Insurance Fee \$
	Int'l Alpha Country Code	Total Postage & Fees \$ 15.90
	Acceptance Emp. Initials MD	



UNITED STATES POSTAL SERVICE

DELIVERY (POSTAL USE ONLY)

Delivery Attempt	Time	<input type="checkbox"/>
Mo. Day Delivery Attempt	Time	<input type="checkbox"/>
Mo. Day Delivery Date	Time	<input type="checkbox"/>
Mo. Day	Time	<input type="checkbox"/>

CUSTOMER USE ONLY

NO DELIVERY
Weekend Holiday

WANT
Additional customer, I wish delivery address judges that authorize the valid proof of

MAILER SIGNATURE

FROM: (PLEASE PRINT) PHONE (412) 392-8111

PATRICK CONTI
DUQUESNE LIGHT COMPANY
2839 NEW BEAVER AVE
PITTSBURGH PA 15233

TO: (PLEASE PRINT) PHONE ()

SECRETARY ROSEMARY CHIAVETTA
PUC
COMMONWEALTH KEYSTONE BUILDING
400 NORTH ST 2ND FLR
HARRISBURG PA 17120

ZIP + 4 (U.S. ADDRESSES ONLY. DO NOT USE FOR FOREIGN POSTAL CODES.)
1 7 2 0 +

FOR INTERNATIONAL DESTINATIONS, WRITE COUNTRY NAME BELOW.

FOR PICKUP OR TRACKING
Visit www.usps.com
Call 1-800-222-1811



Please Recycle

PRESS HARD, YOU ARE MAKING 3 COPIES.