

7/15/10 BCS#: July 14, 2010
2712807

Pennsylvania PUC

JUL 15 2010

2-2010-2161694

PUC members,

Consumer Services
CAC Division

PP&L just got a 30% increase
from most of us. How much more do the need.

PP&L stands for Part-time Power Company.

They switch us on & off like light bulbs.

We live on a fixed income. You can't
continue going to the bank to pay bills from
the savings.

Let them cut their own over paid people.

These fat cats just can't continue to ~~live~~
live out other people's pockets.

The governments are finding out. Their
all in depth.

Why should we pay for a power
line to New Jersey, so they can make more
profit. Just say "No". That's what
parents are saying to their kids.

SUSAN

I have
a daughter and two son-in-laws
out of work for months now.

Where's it going to end. It's
time in stand-up. No - No - No

Get a job.

The retirees in this country aren't going
to get Pay Raises from Social Security. No in
2009 or 2010.

RECEIVED

2010 JUL 16 AM 9:34

PA. P.O.C. 7
SECRETARY'S BUREAU

Jim Picot

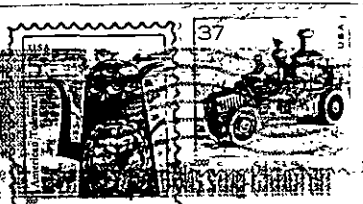
115 Hesperkoff Rd

Easton, Pa. 18042

James Piest
115 Herenkopf Rd
Easton, Pa. 18042

LEHIGH

14 JUL



Pa. Public Utility Commission

P.O. Box 3265

Harrisburg, Pa. 17105-3265

Pennsylvania PUC

JUL 15

Consumer Services
CAC Division

17105+3265

