



100 Constellation Way
Suite 500
Baltimore, Maryland 21202

RECEIVED

March 16, 2012

MAR 16 2012

Pennsylvania Public Utility Commission
Rosemary Chiavetta, Secretary
P.O. Box 3265
Harrisburg, PA 17105-3265

PA PUBLIC UTILITY COMMISSION
SECRETARY'S BUREAU

Re: Constellation NewEnergy, Inc., License No. A-110036: Notice of
Change in Organizational Structure

Dear Secretary Chiavetta:

Pursuant to Section 54.34 of Title 52 of the Pennsylvania Code, this letter serves as notice to the Pennsylvania Public Utility Commission (the "PUC") that Constellation NewEnergy, Inc. ("Licensee") has undergone a change in organizational structure as described herein (the "Change in Organizational Structure"). This Change in Organizational Structure occurred on March 12, 2012.

Description of the Change in Organizational Structure

Prior to the Change in Organizational Structure, Constellation Energy Group, Inc. ("CEG") was Licensee's ultimate parent. CEG and Exelon Corporation ("Exelon") agreed to merge on terms and conditions set forth in an Agreement and Plan of Merger dated as of April 28, 2011 (the "Step 1 Merger"). Under the terms of the Step 1 Merger, a wholly-owned Maryland subsidiary of Exelon named Bolt Acquisition Corporation merged with and into CEG, with CEG as the surviving entity. Following the Step 1 Merger, CEG was a direct wholly-owned subsidiary of Exelon and Exelon was the ultimate parent of Licensee.

Immediately following the Step 1 Merger, CEG merged with and into Exelon, with Exelon as the surviving entity (the "Step 2 Merger"). Following the Step 2 Merger, Licensee's ultimate parent continued to be Exelon. Licensee's direct parent both before the Step 1 Merger and after the Step 2 Merger was Constellation Energy Resources, LLC ("CER").

Immediately following the Step 2 Merger, Exelon transferred CER to Exelon Ventures Company LLC, another wholly-owned subsidiary of Exelon. Exelon Ventures Company LLC then immediately transferred CER to Exelon Generation Company LLC, also a wholly-owned subsidiary of Exelon. As a result of these transfers, Licensee's ultimate indirect parent continues to be Exelon and its direct parent continues to be CER.



A chart showing the organizational structure of Licensee after giving effect to the Change in Organizational Structure is attached hereto as Schedule A.

Effects of the Change in Organizational Structure

The Change in Organizational Structure caused Licensee to gain new affiliates as shown in Schedule B to this letter. This is the only change to the information contained in Licensee's EGS License Application that resulted from the Change in Organizational Structure.

Licensee's name will not change as a result of the Change in Organizational Structure and Licensee will continue to be a licensed electric generation supplier in Pennsylvania following the Change in Organizational Structure. Licensee's license was not transferred as a result of the Change in Organizational Structure.

Moreover, the Change in Organizational Structure will not in any way affect the terms and conditions of service to Pennsylvania customers or, other than expressly described herein, the terms and conditions pursuant to which the PUC has licensed Licensee. CER will continue to be Licensee's direct parent both before and after the Change in Organizational Structure and no changes to the information contained in Licensee's letter of credit are required as a result of the Change in Organizational Structure. The Change in Organizational Structure has not changed Licensee's services or customer population and has not affected Licensee's financial, technical or managerial capabilities.

If you have any questions, please do not hesitate to contact me. Thank you for your attention to this matter.

Sincerely,

A handwritten signature in black ink, appearing to read "Joseph Donovan".

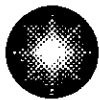
Joseph Donovan
Senior Counsel

Constellation Energy Resources, LLC on
behalf of Constellation NewEnergy, Inc.

Phone: (410) 470-3582

Joseph.Donovan@Constellation.com

Enclosure



Constellation Energy

100 Constellation Way
Suite 500
Baltimore, Maryland 21202

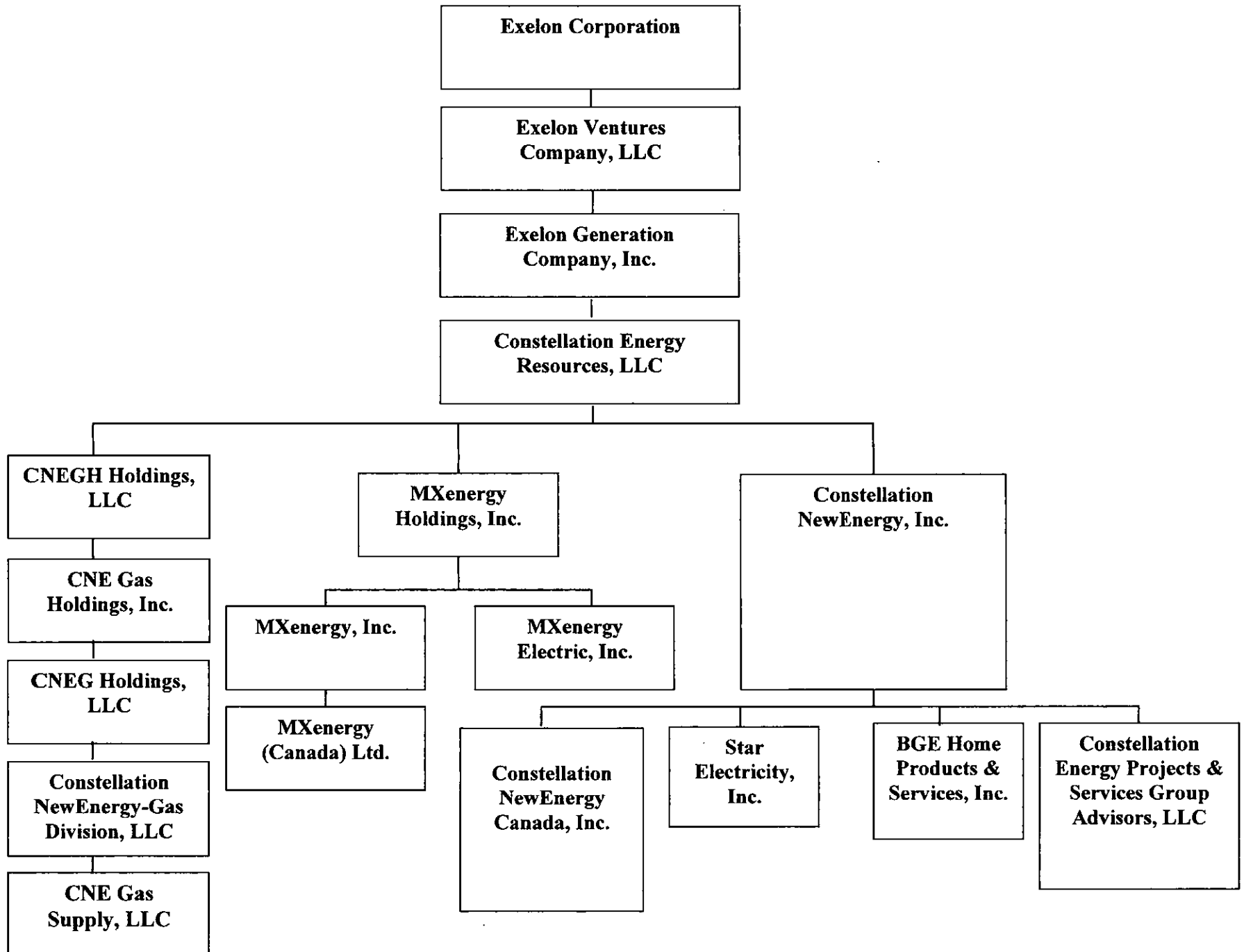
SCHEDULE A

Organizational Structure Chart

RECEIVED

MAR 16 2012

PA PUBLIC UTILITY COMMISSION
SECRETARY'S BUREAU





Constellation Energy

100 Constellation Way
Suite 500
Baltimore, Maryland 21202

SCHEDULE B

List of New Affiliates

RECEIVED

MAR 16 2012

PA PUBLIC UTILITY COMMISSION
SECRETARY'S BUREAU

SCHEDULE B

Exelon Subsidiaries

Adwin Realty Company
2301 Market Street, Philadelphia, PA 19103

AgriWind LLC
4601 Westown Parkway, Suite 300, West Des Moines, Iowa 50266

AgriWind Project L.L.C.
4601 Westown Parkway, Suite 300, West Des Moines, Iowa 50266

AllEnergy Gas & Electric Marketing Company, L.L.C.
10 South Dearborn Street, 49th Floor, Chicago, Illinois 60603

ATNP Finance Company
Suite 243 103 Foulk Road, Wilmington, Delaware 19803

AV Solar Ranch 1, LLC
10 South Dearborn Street, 49th Chicago, Illinois 60430

B & K Energy Systems, LLC
4601 Westown Parkway, Suite 300, West Des Moines, Iowa 50266

BC Energy LLC
4601 Westown Parkway, Suite 300, West Des Moines, Iowa 50266

Bellevue Wind Energy, LLC
4601 Westown Parkway, Suite 300, West Des Moines, Iowa 50266

Bennett Creek Windfarm, LLC
4601 Westown Parkway, Suite 300, West Des Moines, Iowa 50266

Big Top, LLC
4601 Westown Parkway, Suite 300, West Des Moines, Iowa 50266

Blissfield Wind Energy, LLC
4601 Westown Parkway, Suite 300, West Des Moines, Iowa 50266

Blue Breezes II, L.L.C.
4601 Westown Parkway, Suite 300, West Des Moines, Iowa 50266

Blue Breezes, L.L.C.
4601 Westown Parkway, Suite 300, West Des Moines, Iowa 50266

Bolt Acquisition Corporation
10 South Dearborn Street, 49th Floor, Chicago, Illinois 60603

Braidwood 1 NQF, LLC
2215-B Renaissance Drive, Suite 9, Las Vegas, Nevada 89119

Braidwood 2 NQF, LLC
2215-B Renaissance Drive, Suite 9, Las Vegas, Nevada 89119

Breezy Bucks-I LLC
4601 Westown Parkway, Suite 300, West Des Moines, Iowa 50266

Breezy Bucks-II LLC
4601 Westown Parkway, Suite 300, West Des Moines, Iowa 50266

Butter Creek Power, LLC
4601 Westown Parkway, Suite 300, West Des Moines, Iowa 50266

Byron 1 NQF, LLC
2215-B Renaissance Drive, Suite 9, Las Vegas, Nevada 89119

Byron 2 NQF, LLC
2215-B Renaissance Drive, Suite 9, Las Vegas, Nevada 89119

Cassia Gulch Wind Park LLC
4601 Westown Parkway, Suite 300, West Des Moines, Iowa 50266

Cassia Wind Farm LLC
4601 Westown Parkway, Suite 300, West Des Moines, Iowa 50266

Christoffer Transmission Systems, LLC
4601 Westown Parkway, Suite 300, West Des Moines, Iowa 50266

Christoffer Wind Energy I LLC
4601 Westown Parkway, Suite 300, West Des Moines, Iowa 50266

Christoffer Wind Energy II LLC
4601 Westown Parkway, Suite 300, West Des Moines, Iowa 50266

Christoffer Wind Energy III LLC
4601 Westown Parkway, Suite 300, West Des Moines, Iowa 50266

Christoffer Wind Energy IV LLC
4601 Westown Parkway, Suite 300, West Des Moines, Iowa 50266

Cisco Wind Energy LLC
4601 Westown Parkway, Suite 300, West Des Moines, Iowa 50266

Clinton NQF, LLC
2215-B Renaissance Drive, Suite 9, Las Vegas, Nevada 89119

ComEd Financing III
c/o Commonwealth Edison Company, 10 South Dearborn Street, 49th Floor, Chicago, Illinois 60603

ComEd Funding, LLC
10 South Dearborn Street, 49th Floor, Chicago, Illinois 60603

ComEd Transitional Funding Trust
c/o Commonwealth Edison Company, 10 South Dearborn Street, 49th Floor, Chicago, Illinois 60603

Commonwealth Edison Company
One Financial Place, 33rd Floor, 440 South LaSalle Street, Chicago, Illinois 60605-1028

Commonwealth Edison Company of Indiana, Inc.
10 South Dearborn Street, 49th Floor, Chicago, Illinois 60603

Conemaugh Fuels, LLC
c/o Exelon SHC, Inc., 10 South Dearborn Street, 49th Floor Chicago, Illinois 60603

Cow Branch Wind Power, L.L.C.
4601 Westown Parkway, Suite 300, West Des Moines, Iowa 50266

CP Windfarm, LLC
4601 Westown Parkway, Suite 300, West Des Moines, Iowa 50266

CR Clearing, LLC
4601 Westown Parkway, Suite 300, West Des Moines, Iowa 50266

DAJAW Transmission LLC
4601 Westown Parkway, Suite 300, West Des Moines, Iowa 50266

DL Windy Acres, LLC
4601 Westown Parkway, Suite 300, West Des Moines, Iowa 50266

Dresden 1 NQF, LLC
2215-B Renaissance Drive, Suite 9, Las Vegas, Nevada 89119

Dresden 2 NQF, LLC
2215-B Renaissance Drive, Suite 9, Las Vegas, Nevada 89119

Dresden 3 NQF, LLC
2215-B Renaissance Drive, Suite 9, Las Vegas, Nevada 89119

Elbridge Wind Farm, LLC
4601 Westown Parkway, Suite 300, West Des Moines, Iowa 50266

ENEH Services, LLC
300 Exelon Way Kennett Square, Pennsylvania 19348

ETT Canada, Inc.
10 South Dearborn Street 49th Floor, Chicago, Illinois 60603

Ewington Energy Systems LLC
4601 Westown Parkway, Suite 300, West Des Moines, Iowa 50266

Ex-FM, Inc.
10 South Dearborn Street, 49th Floor, Chicago, Illinois 60603

Ex-FME, Inc.

10 South Dearborn Street, 49th Floor, Chicago, Illinois 60603

Exelon AOG Holding #1, Inc.

10 South Dearborn Street, 49th Floor, Chicago, Illinois 60603

Exelon AOG Holding #2, Inc

10 South Dearborn Street, 49th Floor, Chicago, Illinois 60603

Exelon AVSR Holding, LLC

10 South Dearborn Street, 49th Floor, Chicago, Illinois 60603

Exelon AVSR, LLC

10 South Dearborn Street, 49th Floor, Chicago, Illinois 60603

Exelon Business Services Company, LLC

10 South Dearborn Street, 49th Floor, Chicago, Illinois 60603

Exelon Capital Trust I

10 South Dearborn Street, 49th Floor, Chicago, Illinois 60603

Exelon Capital Trust II

10 South Dearborn Street, 49th Floor, Chicago, Illinois 60603

Exelon Capital Trust III

10 South Dearborn Street, 49th Floor, Chicago, Illinois 60603

Exelon Corporation

10 S. Dearborn Street, 49th Floor, Chicago, Illinois 60603

Exelon Edgar, LLC

10 South Dearborn Street, 49th Floor, Chicago, Illinois 60603

Exelon Energy Company

10 South Dearborn Street, 49th Floor, Chicago, Illinois 60603

Exelon Energy Delivery Company, LLC

10 South Dearborn Street, 49th Floor, Chicago, Illinois 60603

Exelon Enterprises Company, LLC

2301 Market Street, Philadelphia, PA 19103

Exelon Framingham Development, LLC

10 South Dearborn Street, 49th Floor, Chicago, Illinois 60603

Exelon Framingham, LLC

10 South Dearborn Street, 49th Floor, Chicago, Illinois 60603

Exelon Generation Acquisitions, LLC

10 South Dearborn Street, 49th Floor, Chicago, Illinois 60603

Exelon Generation Company, LLC

300 Exelon Way Kennett Square, Pennsylvania 19103

Exelon Generation Consolidation, LLC
2215-B Renaissance Drive, Suite 9, Las Vegas, Nevada 89119

Exelon Generation Finance Company, LLC
10 South Dearborn Street, 49th Floor, Chicago, Illinois 60603

Exelon Generation International, Inc.
10 South Dearborn Street, 49th Floor, Chicago, Illinois 60603

Exelon Hamilton LLC
10 South Dearborn Street, 49th Floor, Chicago, Illinois 60603

Exelon International Commodities, LLC
300 Exelon Way Kennett Square, Pennsylvania 19348

Exelon Investment Holdings, LLC
10 S. Dearborn Street, 49th Floor, Chicago, Illinois 60603

Exelon Mechanical, LLC
10 South Dearborn Street, 49th Floor, Chicago, Illinois 60603

Exelon New Boston, LLC
10 South Dearborn Street, 49th Floor, Chicago, Illinois 60603

Exelon New England Development, LLC
10 South Dearborn Street, 49th Floor, Chicago, Illinois 60603

Exelon New England Holdings, LLC
10 South Dearborn Street 49th Floor, Chicago, Illinois 60603

Exelon New England Power Marketing, Limited Partnership
10 South Dearborn Street, 49th Floor, Chicago, Illinois 60603

Exelon Nuclear Partners International S.a r.l.
200 Exelon Way, Kennett Square, Pennsylvania 19348

Exelon Nuclear Partners, LLC
300 Exelon Way, Kennett Square, Pennsylvania 19348

Exelon Nuclear Security, LLC
300 Exelon Way, Kennett Square, Pennsylvania 19103

Exelon Nuclear Texas Holdings, LLC
300 Exelon Way, Kennett Square, Pennsylvania 19348

Exelon Peaker Development General, LLC
10 South Dearborn Street, 49th Floor, Chicago, Illinois 60603

Exelon Peaker Development Limited, LLC
2301 Market Street, Attn: Legal 22nd Floor, Philadelphia, Pennsylvania 19103

Exelon PowerLabs, LLC
10 South Dearborn Street, 49th Floor, Chicago, Illinois 60603

Exelon SHC, LLC
10 South Dearborn Street, 49th Floor, Chicago, Illinois 60603

Exelon Solar Chicago LLC
300 Exelon Way, Kennett Square, Pennsylvania 19348

Exelon Transmission Company, LLC
300 Exelon Way, Kennett Square, Pennsylvania 19348

Exelon Ventures Company, LLC
10 South Dearborn Street, 49th Floor, Chicago, Illinois 60603

Exelon West Medway Development, LLC
10 South Dearborn Street, 49th Floor, Chicago, Illinois 60603

Exelon West Medway Expansion, LLC
10 South Dearborn Street, 49th Floor, Chicago, Illinois 60603

Exelon West Medway, LLC
10 South Dearborn Street, 49th Floor, Chicago, Illinois 60603

Exelon Wind 1, LLC
4601 Westown Parkway, Suite 300, West Des Moines, Iowa 50266

Exelon Wind 10, LLC
4601 Westown Parkway, Suite 300, West Des Moines, Iowa 50266

Exelon Wind 11, LLC
4601 Westown Parkway, Suite 300, West Des Moines, Iowa 50266

Exelon Wind 2, LLC
4601 Westown Parkway, Suite 300, West Des Moines, Iowa 50266

Exelon Wind 3, LLC
4601 Westown Parkway, Suite 300, West Des Moines, Iowa 50266

Exelon Wind 4, LLC
4601 Westown Parkway, Suite 300, West Des Moines, Iowa 50266

Exelon Wind 5, LLC
4601 Westown Parkway, Suite 300, West Des Moines, Iowa 50266

Exelon Wind 6, LLC
4601 Westown Parkway, Suite 300, West Des Moines, Iowa 50266

Exelon Wind 7, LLC
4601 Westown Parkway, Suite 300, West Des Moines, Iowa 50266

Exelon Wind 8, LLC

4601 Westown Parkway, Suite 300, West Des Moines, Iowa 50266

Exelon Wind 9, LLC

4601 Westown Parkway, Suite 300, West Des Moines, Iowa 50266

Exelon Wind Canada Inc.

10 South Dearborn Street, 49th Floor, Chicago, Illinois 60603

Exelon Wind, LLC

4601 Westown Parkway, Suite 300, West Des Moines, Iowa 50266

Exelon Wyman, LLC

10 South Dearborn Street, 49th Floor, Chicago, Illinois 60603

ExTel Corporation, LLC

2301 Market Street, S23-1, Philadelphia, PA 19103

ExTex LaPorte Limited Partnership

10 South Dearborn Street, 49th Floor, Chicago, Illinois 60603

ExTex Retail Services Company, LLC

10 South Dearborn Street, 49th Floor, Chicago, Illinois 60603

F & M Holdings Company, L.L.C.

10 South Dearborn Street, 49th Floor, Chicago, Illinois 60603

Four Corners Windfarm, LLC

4601 Westown Parkway, Suite 300, West Des Moines, Iowa 50266

Four Mile Canyon Windfarm, LLC

4601 Westown Parkway, Suite 300, West Des Moines, Iowa 50266

Frontier I, L.P.

10 South Dearborn Street, 49th Floor, Chicago, Illinois 60603

G-Flow Wind, LLC

4601 Westown Parkway, Suite 300, West Des Moines, Iowa 50266

Green Acres Breeze, LLC

4601 Westown Parkway, Suite 300, West Des Moines, Iowa 50266

Greensburg Wind Farm, LLC

4601 Westown Parkway, Suite 300, West Des Moines, Iowa 50266

Harvest II Windfarm, LLC

4601 Westown Parkway, Suite 300, West Des Moines, Iowa 50266

Harvest Windfarm, LLC

4601 Westown Parkway, Suite 300, West Des Moines, Iowa 50266

High Plains Wind Power, LLC

4601 Westown Parkway, Suite 300, West Des Moines, Iowa 50266

Hot Springs Windfarm, LLC
4601 Westown Parkway, Suite 300, West Des Moines, Iowa 50266

K & D Energy LLC
4601 Westown Parkway, Suite 300, West Des Moines, Iowa 50266

KC Energy LLC
4601 Westown Parkway, Suite 300, West Des Moines, Iowa 50266

Keystone Fuels, LLC
c/o Exelon SHC, Inc., 10 South Dearborn Street, 49th Floor, Chicago, Illinois 60603

KSS Turbines LLC
4601 Westown Parkway, Suite 300, West Des Moines, Iowa 50266

La Salle 1 NQF, LLC
2215-B Renaissance Drive, Suite 9, Las Vegas, Nevada 89119

La Salle 2 NQF, LLC
2215-B Renaissance Drive, Suite 9, Las Vegas, Nevada 89119

Limerick 1 NQF, LLC
2215-B Renaissance Drive, Suite 9, Las Vegas, Nevada 89119

Limerick 2 NQF, LLC
2215-B Renaissance Drive, Suite 9, Las Vegas, Nevada 89119

Loess Hills Wind Farm, LLC
4601 Westown Parkway, Suite 300, West Des Moines, Iowa 50266

Marshall Wind 1, LLC
4601 Westown Parkway, Suite 300, West Des Moines, Iowa 50266

Marshall Wind 2, LLC
4601 Westown Parkway, Suite 300, West Des Moines, Iowa 50266

Marshall Wind 3, LLC
4601 Westown Parkway, Suite 300, West Des Moines, Iowa 50266

Marshall Wind 4, LLC
4601 Westown Parkway, Suite 300, West Des Moines, Iowa 50266

Marshall Wind 5, LLC
4601 Westown Parkway, Suite 300, West Des Moines, Iowa 50266

Marshall Wind 6, LLC
4601 Westown Parkway, Suite 300, West Des Moines, Iowa 50266

Michigan Wind 1, LLC
4601 Westown Parkway, Suite 300, West Des Moines, Iowa 50266

Michigan Wind 2, LLC
4601 Westown Parkway, Suite 300, West Des Moines, Iowa 50266

Minnesota Breeze, LLC
4601 Westown Parkway, Suite 300, West Des Moines, Iowa 50266

Newcosy, Inc.
10 South Dearborn Street, 49th Floor, Chicago, Illinois 60603

Northwind Thermal Technologies Canada Inc.
10 South Dearborn Street, 49th Floor, Chicago, Illinois 60603

NuStart Energy Development, LLC
10 South Dearborn Street, 49th Floor, Chicago, Illinois 60603

OldcoVSI, Inc.
10 South Dearborn Street, 49th Floor, Chicago, Illinois 60603

OldPecoGasCo, Company
2301 Market Street, Philadelphia, PA 19103

Oregon Trail Windfarm, LLC
4601 Westown Parkway, Suite 300, West Des Moines, Iowa 50266

OSP Servicios, S.A. de C.V.
10 South Dearborn Street, 49th Floor, Chicago, Illinois 60603

Oyster Creek NQF, LLC
2215-B Renaissance Drive, Suite 9, Las Vegas, Nevada 89119

Pacific Canyon Windfarm, LLC
4601 Westown Parkway, Suite 300, West Des Moines, Iowa 50266

Peach Bottom 1 NQF, LLC
2215-B Renaissance Drive, Suite 9, Las Vegas, Nevada 89119

Peach Bottom 2 NQF, LLC
2215-B Renaissance Drive, Suite 9, Las Vegas, Nevada 89119

Peach Bottom 3 NQF, LLC
2215-B Renaissance Drive, Suite 9, Las Vegas, Nevada 89119

PEC Financial Services, LLC
1050 W. Swedesford Road Berwyn, PA 19312

PECO Energy Capital Corp.
1013 Centre Road, Wilmington, DE 19805-0000

PECO Energy Capital Trust III
2301 Market Street, Philadelphia, Pennsylvania 19103

PECO Energy Capital Trust IV

2301 Market Street, Philadelphia, PA 19103

PECO Energy Capital Trust V
2301 Market Street, Philadelphia, PA 19103

PECO Energy Capital Trust VI
2301 Market Street, Philadelphia, PA 19103

PECO Energy Capital, L.P.
2301 Market Street, Philadelphia, Pennsylvania 19103

PECO Energy Company
2301 Market Street, Philadelphia, PA 19103

PECO Wireless, LLC
2301 Market Street, Philadelphia, Pennsylvania 19103

Prairie Wind Power LLC
4601 Westown Parkway, Suite 300, West Des Moines, Iowa 50266

Quad Cities 1 NQF, LLC
2215-B Renaissance Drive, Suite 9, Las Vegas, Nevada 89119

Quad Cities 2 NQF, LLC
2215-B Renaissance Drive, Suite 9, Las Vegas, Nevada 89119

RITELine Illinois, LLC
10 South Dearborn Street, 49th, Floor Chicago, Illinois 60603

RITELine Indiana, LLC
c/o AEP 1 Riverside Plaza Columbus, Ohio 43215

RITELine Transmission Development, LLC
10 South Dearborn Street, 49th Floor, Chicago, Illinois 60603

River Bend I, L.L.C.
10 South Dearborn Street, 49th Floor, Chicago, Illinois 60603

Roadrunner-I LLC
4601 Westown Parkway, Suite 300, West Des Moines, Iowa 50266

S & P Windfarms, LLC
4601 Westown Parkway, Suite 300, West Des Moines, Iowa 50266

Salem 1 NQF, LLC
2215-B Renaissance Drive, Suite 9, Las Vegas, Nevada 89119

Salem 2 NQF, LLC
2215-B Renaissance Drive, Suite 9, Las Vegas, Nevada 89119

Salty Dog-I LLC
4601 Westown Parkway, Suite 300, West Des Moines, Iowa 50266

Salty Dog-II LLC
4601 Westown Parkway, Suite 300, West Des Moines, Iowa 50266

Sand Ranch Windfarm, LLC
4601 Westown Parkway, Suite 300, West Des Moines, Iowa 50266

Scherer Holdings 1, LLC
10 S. Dearborn Street, 49th Floor, Chicago, Illinois 60603

Scherer Holdings 2, LLC
10 S. Dearborn Street, 49th Floor, Chicago, Illinois 60603

Scherer Holdings 3, LLC
10 S. Dearborn Street, 49th Floor, Chicago, Illinois 60603

Shane's Wind Machine LLC
4601 Westown Parkway, Suite 300, West Des Moines, Iowa 50266

Spruce Equity Holdings, L.P.
10 S. Dearborn Street 49th Floor Chicago, Illinois 60603

Spruce Holdings G.P. 2000, L.L.C.
10 S. Dearborn Street 49th Floor Chicago, Illinois 60603

Spruce Holdings L.P. 2000, L.L.C.
10 S. Dearborn Street 49th Floor Chicago, Illinois 60603

Spruce Holdings Trust
10 S. Dearborn Street 49th Floor Chicago, Illinois 60603

Sunbelt I, L.L.C.
10 South Dearborn Street, 49th Floor Chicago, Illinois 60603

Sunset Breeze, LLC
4601 Westown Parkway, Suite 300 West Des Moines, Iowa 50266

Tamuin International, Inc.
10 South Dearborn Street 49th Floor Chicago, Illinois 60603

TEG Holdings, LLC
10 South Dearborn Street 49th Floor Chicago, Illinois 60603

Texas-Ohio Gas, Inc.
10 South Dearborn Street 49th Floor Chicago, Illinois 60603

The Proprietors of the Susquehanna Canal
2569 Shures Landing Road Darlington, MD 21034-1503

Threemile Canyon Wind I, LLC
4601 Westown Parkway, Suite 300 West Des Moines, Iowa 50266

TMI NQF, LLC
2215-B Renaissance Drive, Suite 9 Las Vegas, Nevada 89119

Tuana Springs Energy, LLC
4601 Westown Parkway, Suite 300 West Des Moines, Iowa 50266

UII, LLC
10 S. Dearborn Street 49th Floor Chicago, Illinois 60603

URI, LLC
10 S. Dearborn Street 49th Floor Chicago, Illinois 60603

Wagon Trail, LLC
4601 Westown Parkway, Suite 300 West Des Moines, Iowa 50266

Wally's Wind Farm LLC
4601 Westown Parkway, Suite 300 West Des Moines, Iowa 50266

Wansley Holdings 1, LLC
10 South Dearborn Street 49th Floor Chicago, Illinois 60603

Wansley Holdings 2, LLC
10 S. Dearborn Street 49th Floor Chicago, Illinois 60603

Ward Butte Windfarm, LLC
4601 Westown Parkway, Suite 300 West Des Moines, Iowa 50266

Wind Capital Holdings, LLC
4601 Westown Parkway, Suite 300 West Des Moines, Iowa 50266

Windy Dog-1 LLC
4601 Westown Parkway, Suite 300 West Des Moines, Iowa 50266

Wolf Hollow I, L.P.
10 South Dearborn Street, 49th Floor Chicago, Illinois 60603

Wolf Wind Enterprises, LLC
4601 Westown Parkway, Suite 300 West Des Moines, Iowa 50266

Wolf Wind Transmission, LLC
4601 Westown Parkway, Suite 300 West Des Moines, Iowa 50266

Zion 1 NQF, LLC
2215-B Renaissance Drive, Suite 9 Las Vegas, Nevada 89119

Zion 2 NQF, LLC
2215-B Renaissance Drive, Suite 9 Las Vegas, Nevada 89119

UPS CampusShip: View/Print Label

1. Ensure there are no other shipping or tracking labels attached to your package. Select the Print button on the print dialog box that appears. Note: If your browser does not support this function select Print from the File menu to print the label.
2. Fold the printed sheet containing the label at the line so that the entire shipping label is visible. Place the label on a single side of the package and cover it completely with clear plastic shipping tape. Do not cover any seams or closures on the package with the label. Place the label in a UPS Shipping Pouch. If you do not have a pouch, affix the folded label using clear plastic shipping tape over the entire label.
3. **GETTING YOUR SHIPMENT TO UPS**
 UPS locations include the UPS Store®, UPS drop boxes, UPS customer centers, authorized retail outlets and UPS drivers.
 Find your closest UPS location at: www.ups.com/dropoff
 Take your package to any location of The UPS Store®, UPS Drop Box, UPS Customer Center, UPS Alliances (Office Depot® or Staples®) or Authorized Shipping Outlet near you. Items sent via UPS Return Services(SM) (including via Ground) are also accepted at Drop Boxes. To find the location nearest you, please visit the Resources area of CampusShip and select UPS Locations.

Customers with a Daily Pickup
 Your driver will pickup your shipment(s) as usual.

FOLD HERE

CATHLEEN TIGHE 410-470-5215 CATHLEEN TIGHE 100 CONSTELLATION WAY BALTIMORE MD 212026302	0.1 LBS LTR	1 OF 1
SHIP TO: ROSEMARY CHIAVETTA 717-772-7777 PA PUBLIC UTILITY COMMISSION COMMONWEALTH KEYSTONE BUILDING 400 NORTH STREET HARRISBURG PA 17120-0200		
	PA 171 9-20 	
UPS NEXT DAY AIR		
TRACKING #: 1Z A28 E05 01 9162 3179	1	
		
BILLING: P/P		
		
<small>CS 14.1.10. WXP/E60 24.0A 01/2012</small>		