

# Strategies Law Group, PLLC

May 17, 2012

**VIA OVERNIGHT DELIVERY**

Rosemary Chiavetta  
Secretary  
Pennsylvania Public Utility Commission  
Commonwealth Keystone Building  
400 North Street  
Harrisburg, PA 17101

**RECEIVED**

MAY 17, 2012

PA PUBLIC UTILITY COMMISSION  
SECRETARY'S BUREAU

RE: Princeton Hosted Solutions, LLC;  
Docket numbers A-2012-2283859, A-2012-2283861 and M-2012-2283864

Dear Ms. Chiavetta:

Pursuant to the Final Order in the above referenced dockets, Princeton Hosted Solutions, LLC ("PHS" or "Applicant"), through undersigned counsel, hereby submits an original and three (3) copies of this tariff with the changes mandated by the Order. There are no additional changes to the tariff.

Please date-stamp and return the enclosed extra copy of this letter in the attached stamped envelope. Questions may be addressed to the undersigned.

Respectfully submitted,



Brian McDermott  
Edward S. Quill, Jr.

Counsel for Princeton Hosted Solutions, LLC

Enclosure

CC: Service List

COMPETITIVE LOCAL EXCHANGE TELECOMMUNICATIONS SERVICES

---

**PRINCETON HOSTED SOLUTIONS, LLC  
COMPETITIVE LOCAL EXCHANGE CARRIER  
Regulations and Schedule of Charges**

The Company will mirror the exchange area boundaries as stated in the tariffs of Verizon Pennsylvania Inc. Telephone Pa. P.U.C. Nos. 180A, 182, 182A, 185B and 185C and Verizon North LLC Telephone Pa P.U.C. Nos. 1, 3, 5 and 6.

The Company's tariff is in concurrence with all applicable State and Federal Laws (including but not limited to, 52 Pa. Code, 66 Pa. C.S. and the Telecommunications Act of 1934, as amended), and with the Commission's applicable Rules and Regulations and Orders. Any provisions contained in this Tariff that are inconsistent with the foregoing mentioned will be deemed inoperative and superseded.

*This Tariff contains descriptions, regulations, and rates applicable to the furnishing of service and facilities only for business class telecommunications services provided by Princeton Hosted Solutions, LLC (hereinafter "Carrier" or "Company") with principal offices at 700 Godwin Avenue, Suite 230, Middle Park, NJ 07432. **Residential local exchange services are not available under this Tariff.** This Tariff applies to intrastate services furnished in those areas in which Princeton Hosted Solutions, LLC operates (as described in greater detail) within the State of Pennsylvania. This Tariff is on file with the Pennsylvania Public Utilities Commission ("Commission") and copies may be inspected, during normal business hours, at Carrier's principal place of business. Any provisions contained in the Tariff that are inconsistent with state statutes or Commission regulations will be deemed inoperative and superseded. Carrier will provide service in the service territory of Verizon Pennsylvania, Inc. ("Verizon-PA") and Verizon North LLC ("Verizon North") and will mirror the service area maps contained in Verizon-PA Tariff 180A and Verizon North Tariffs 1, 3, 5 and 6.*

**RECEIVED**

MAY 17 2012

PA PUBLIC UTILITY COMMISSION  
SECRETARY'S BUREAU

---

Issued: May 19, 2012

Effective: May 23, 2012

By:  
Bradford M. Bono  
Princeton Hosted Solutions, LLC  
700 Godwin Avenue, Suite 330,  
Midland Park, NJ 07432

COMPETITIVE LOCAL EXCHANGE TELECOMMUNICATIONS SERVICES

---

**LIST OF MODIFICATIONS**

**RECEIVED**

MAY 17 2012

PA PUBLIC UTILITY COMMISSION  
SECRETARY'S BUREAU

---

Issued: May 19, 2012

Effective: May 23, 2012

By:  
Bradford M. Bono  
Princeton Hosted Solutions, LLC  
700 Godwin Avenue, Suite 330,  
Midland Park, NJ 07432

COMPETITIVE LOCAL EXCHANGE TELECOMMUNICATIONS SERVICES

**TABLE OF CONTENTS**

Check Sheet..... 3

Application of Tariff..... 4

Concurring, Connecting, and other Participating Carriers ..... 5

Explanation of Symbols ..... 6

Tariff Format ..... 7

SECTION 1 - DEFINITION OF TERMS..... 8

SECTION 2 - RULES AND REGULATIONS..... 9

SECTION 3 - DESCRIPTION OF LOCAL SERVICE AREAS ..... 19

SECTION 4 - DESCRIPTION OF SERVICES ..... 44

SECTION 5 - RATES AND CHARGES ..... 50

SECTION 6 - SPECIAL SERVICES AND PROGRAMS ..... 52

**RECEIVED**  
MAY 17 2012  
PA PUBLIC UTILITY COMMISSION  
SECRETARY'S BUREAU

Issued: May 19, 2012

Effective: May 23, 2012

By:  
Bradford M. Bono  
Princeton Hosted Solutions, LLC  
700 Godwin Avenue, Suite 330,  
Midland Park, NJ 07432

## COMPETITIVE LOCAL EXCHANGE TELECOMMUNICATIONS SERVICES

**CHECK SHEET**

Sheets of this Tariff are effective as of the date shown at the bottom of the respective sheet(s). Original and revised sheets are named below and comprise all changes from the original Tariff and are currently in effect as of the date on the bottom of this sheet.

PAGE	REVISION NUMBER (except as indicated)	PAGE	REVISION NUMBER (except as indicated)
Title	Original	41	Original
1	Original	42	Original
2	Original	43	Original
3	Original	44	Original
4	Original	45	Original
5	Original	46	Original
6	Original	47	Original
7	Original	48	Original
8	Original	49	Original
9	Original	50	Original
10	Original	51	Original
11	Original	52	Original
12	Original	53	Original
13	Original	54	Original
14	Original	55	Original
15	Original	56	Original
16	Original		
17	Original		
18	Original		
19	Original		
20	Original		
21	Original		
22	Original		
23	Original		
24	Original		
25	Original		
26	Original		
27	Original		
28	Original		
29	Original		
30	Original		
31	Original		
32	Original		
33	Original		
34	Original		
35	Original		
36	Original		
37	Original		
38	Original		
39	Original		
40	Original		

**RECEIVED**

MAY 17 2012

PA PUBLIC UTILITY COMMISSION  
SECRETARY'S BUREAU

Issued: May 19, 2012

Effective: May 23, 2012

By:  
Bradford M. Bono  
Princeton Hosted Solutions, LLC  
700 Godwin Avenue, Suite 330,  
Midland Park, NJ 07432

COMPETITIVE LOCAL EXCHANGE TELECOMMUNICATIONS SERVICES

---

**APPLICATION OF TARIFF**

Princeton Hosted Solutions, LLC will initially provide service only upon a resold basis to business customers but will expand its operations to include facilities-based authority based on market conditions. This Tariff contains the regulations and charges applicable to resold local exchange telecommunications services provided by Princeton Hosted Solutions, LLC to customers within the Commonwealth of Pennsylvania. The regulations and charges contained in this Tariff will also apply to facilities-based services once Princeton Hosted Solutions, LLC initiates the provision of such services.

The Company's Tariff is in concurrence with all applicable state and federal laws, including but not limited to, 52 Pa. Code Chapter 63, 66 Pa. C.S., and the Communications Act of 1934, as amended.

**RECEIVED**

MAY 17 2012

**PA PUBLIC UTILITY COMMISSION  
SECRETARY'S BUREAU**

---

Issued: May 19, 2012

Effective: May 23, 2012

By:  
Bradford M. Bono  
Princeton Hosted Solutions, LLC  
700 Godwin Avenue, Suite 330,  
Midland Park, NJ 07432

COMPETITIVE LOCAL EXCHANGE TELECOMMUNICATIONS SERVICES

---

**CONCURRING, CONNECTING, AND OTHER PARTICIPATING CARRIERS**

Concurring Carriers	-	None
Connecting Carriers	-	None
Other Participating Carriers	-	None

By:  
Bradford M. Bono  
Princeton Hosted Solutions, LLC  
700 Godwin Avenue, Suite 330,  
Midland Park, NJ 07432

COMPETITIVE LOCAL EXCHANGE TELECOMMUNICATIONS SERVICES

---

**EXPLANATION OF SYMBOLS**

Revisions of this Tariff are coded through the use of symbols. The following are the only symbols used for the purposes indicated below.

- C - To signify a "Change" in regulation.
- D - To signify a rate "Decrease."
- I - To signify a rate "Increase."



COMPETITIVE LOCAL EXCHANGE TELECOMMUNICATIONS SERVICES

---

**TARIFF FORMAT**

- A. **Sheet Numbering** - Sheet numbers appear in the upper-right corner of the page. Sheets are numbered sequentially. However, new sheets are occasionally added to the Tariff. When a new sheet is added between sheets already in effect, a decimal is added. For example, a new sheet added between Sheets 14 and 15 would be 14.1.
- B. **Sheet Revision Numbers** - Revision numbers also appear in the upper-right corner of the page. These numbers are used to determine the most current sheet version on file with the Commission. For example, the 4th revised Sheet 14 cancels the 3rd revised Sheet 14. Because of various suspension periods, deferrals, etc. the Commission follows in their Tariff approval process, the most current sheet number on file with the Commission is not always the Tariff page in effect. Consult the Check Sheet for the sheet currently in effect.
- C. **Check Sheets** - When a Tariff filing is made with the Commission, an updated check sheet accompanies the Tariff filing. The check sheet lists the sheets contained in the Tariff, with a cross reference to the current revision number. When new sheets are added, the check sheet is changed to reflect the revision. All revisions made in a given filing are designated by an asterisk (\*). There will be no other symbols used on this sheet if these are the only changes made to it (i.e., the format, etc. remains the same, just revised revision levels on some sheets). The Tariff user should refer to the latest check sheet to find out if a particular sheet is the most current sheet on file with the Commission.

By:  
Bradford M. Bono  
Princeton Hosted Solutions, LLC  
700 Godwin Avenue, Suite 330,  
Midland Park, NJ 07432

COMPETITIVE LOCAL EXCHANGE TELECOMMUNICATIONS SERVICES

---

**SECTION 1 - DEFINITION OF TERMS**

**Application for Service** - A standard order form which includes all pertinent billing, technical, and other descriptive information which will enable Carrier to provide telecommunication services, as required.

**Carrier** - Princeton Hosted Solutions, LLC ("Carrier"), unless the context indicates otherwise. Carrier also may be referred to as "Company."

**Commission** - Pennsylvania Public Utility Commission ("PA PUC"), unless the context indicates otherwise.

**Customer** - The person, firm, corporation, or other entity which orders or uses service and is responsible for the payment of rates and charges and compliance with Tariff regulations.

**Disconnection** - The disconnection of a circuit, dedicated access line, or port connection being used for existing service.

**Incumbent Local Exchange Carrier (ILEC)** - Local exchange carriers that are providing telephone exchange service in an area on the date of the enactment of the Telecommunications Act of 1996 and that are deemed to be members of the National Exchange Carrier Association ("NECA").

**Premises** - The space designated by a customer as its place or places of business for termination of service (whether for its own communications needs or for its resale customers). In the case of a non-profit sharing group, this term includes space at each sharer's place or places of business, as well as space at Customer's place of business.

**Service or Services** - The services covered by this Tariff shall include only the State of Pennsylvania.

**Terminal Equipment** - Telecommunications devices, apparatus, and their associated wiring, such as teleprinters, telephone, and data sets.

---

**COMPETITIVE LOCAL EXCHANGE TELECOMMUNICATIONS SERVICES**

---

**SECTION 2 - RULES AND REGULATIONS****2.1 UNDERTAKING OF CARRIER**

Carrier is a resale common carrier providing intrastate communications services to customers for their direct transmission and reception of voice, data, and other types of telecommunications. Service is available on a full-time basis, 24 hours a day, seven days a week, in the service territories of Verizon North LLC and Verizon PA Inc.

**2.2 LIMITATIONS OF SERVICE**

- 2.2.1 Carrier offers service to business customers who desire to purchase service from Carrier consistent with all provisions of this Tariff. Customers interested in Carrier's services shall file a service application with Carrier which fully identifies Customer and identifies the services required.
- 2.2.2 Service is offered subject to the availability of the necessary facilities and/or equipment and subject to the provisions of this Tariff. Carrier reserves the right not to provide service to or from a location where the necessary facilities or equipment are not available.
- 2.2.3 Carrier reserves the right to discontinue furnishing service, upon a written notice, when necessitated by conditions beyond its control, or when Customer is using the service in violation of any provision in this Tariff, the rules and regulations of the Pennsylvania Public Utilities Commission, or in violation of the law.
- 2.2.4 Title to all facilities provided by Carrier under these regulations remains with Carrier. Prior written permission from Carrier is required before any assignment or transfer. All regulations and conditions contained in this Tariff shall apply to all such permitted assignees or transferees, as well as all conditions for service.

**2.3 USE OF SERVICE**

Service may not be used for any unlawful purposes or for any purpose for which any payment or other compensation is received by Customer, except when Customer is a duly authorized and regulated competitive local exchange carrier. This provision does not prohibit an arrangement between Customer, authorized user, or joint user to share the cost of the service, as long as the arrangement generates no profit for any participant in the arrangement.

COMPETITIVE LOCAL EXCHANGE TELECOMMUNICATIONS SERVICES

---

**SECTION 2 – RULES AND REGULATIONS (Continued)****2.4 LIABILITY**

- 2.4.1 The liability of Carrier for any claim or loss, expense or damage, due to any interruption, delay, error, omission, or defect in any service, facility, or transmission provided under the Tariff shall not exceed an amount equivalent to the proportionate charge to Customer for the period of service or the facility provided during which such interruption, delay, error, omission, or defect occurs. For the purpose of computing this amount, a month is considered to have 30 days. In no event will Carrier be liable for any indirect, consequential or special damages or for any lost profits, even if advised of the possibility of the same.
- 2.4.2 Carrier shall not be liable for any claim or loss, expense, or damage, due to any interruption, delay, error, omission, or other defect in service, facility, or transmission provided under this Tariff, if caused by any person or entity other than Carrier, by any malfunction of any service or facility provided by any other carrier, act of God, fire, war, civil disturbance, act of government, or by any other cause beyond Carrier's direct control.
- 2.4.3 Carrier shall not be liable for, and shall be fully indemnified and held harmless by Customer against any claim or loss, expense or damage, including indirect, special, or consequential damage for:
- A. defamation, libel, slander, invasion of privacy, infringement of copyright or patent, unauthorized use of any trademark, trade name, or service mark, unfair competition, interference with, misappropriation, or violation of any contract, proprietary or creative right, or any other injury to any person, property, or entity arising from any act or omission of Customer or the material, data, information, or content revealed to, or transmitted by Customer in connection with Service provided by Carrier under this Tariff;
  - B. connecting, combining, or adapting Carrier's facilities with Customer's apparatus or systems;
  - C. any act of omission by Customer; or
  - D. any personal injury or death of any person or for any loss of or damage to Customer's premises or any other property, whether owned by Customer or others, caused directly or indirectly by the installation, maintenance, location, condition, operation, failure, presence, use, or removal of equipment or wiring provided by Carrier, if not caused by the negligence or intentional torts of Carrier.
  - E. No agent or employee of any other carrier shall be deemed to be an agent or employee of Carrier.
  - F. CARRIER MAKES NO WARRANTY REGARDING THE PROVISION OF SERVICE PURSUANT TO THIS TARIFF, INCLUDING, BUT NOT LIMITED TO, THE IMPLIED WARRANTIES OF MERCHANTABILITY AND FITNESS FOR A PARTICULAR PURPOSE.

COMPETITIVE LOCAL EXCHANGE TELECOMMUNICATIONS SERVICES

---

**SECTION 2 – RULES AND REGULATIONS (Continued)****2.5 INTERRUPTION OF SERVICE**

Carrier may temporarily interrupt service to enable the ILEC to effect repairs or maintenance, to eliminate an imminent threat to life, health, safety or substantial property damage, or for reasons of local, state or national emergency. Credit allowance for interruption of service which is not due to the negligence of Customer or to the failure of channels, equipment, and/or communications systems provided by Customer and other carriers are subject to the general liability provisions set forth in Sections 2.4 and 2.6 herein.

**2.6 RESPONSIBILITY OF CUSTOMER**

2.6.1 Customer assumes general responsibilities in connection with the provisions and use of Carrier's service. When facilities, equipment, and/or communications systems provided by others are connected to Carrier's facilities, Customer assumes additional responsibilities. Customers are responsible for the following:

- A. Customer is responsible for placing orders for service, paying all charges for service rendered by Carrier, and complying with all of Carrier's regulations governing the service. Customer is also responsible for assuring that its users comply with Commission regulations.
- B. When placing an order for service, Customer must provide:
  - 1. the name(s) and address(es) of the person(s) responsible for the payment of service charges; and
  - 2. the name(s), telephone number(s), and address(es) of Customer-contact person(s).
- C. Customer must pay Carrier for the replacement or repair of Carrier's equipment when the damage results from:
  - 1. the negligence or willful act of Customer or user;
  - 2. improper use of service; or
  - 3. any use of equipment or service provided by others.

**2.6.2 Availability of Service for Maintenance, Testing and Adjustment**

Upon reasonable notice, the facilities provided by Carrier shall be made available to Carrier for such tests and adjustments as may be necessary to maintain them in a satisfactory condition. No interruption allowance will be granted for the time during which such tests and adjustments are made.

---

**COMPETITIVE LOCAL EXCHANGE TELECOMMUNICATIONS SERVICES**

---

**SECTION 2 – RULES AND REGULATIONS (Continued)****2.6 RESPONSIBILITY OF CUSTOMER (Continued)****2.6.3 Credit Allowances**

When the use of service or facilities furnished by Carrier is interrupted due to any cause other than the negligence or willful act of Customer, or the operation or failure of the facilities or equipment provided by Customer, a pro rata adjustment of the monthly Charges subject to interruption will be allowed for the service and facilities rendered useless and inoperative by reason of the interruption whenever said interruption continues for a period of 24 hours or more from the time the interruption is reported to or known to exist by Carrier, except as otherwise specified in Carrier's tariff.

It shall be the obligation of Customer to notify Carrier immediately of any interruption in service for which a credit allowance is desired by Customer. Before giving such notice, Customer shall ascertain that the trouble is not being caused by any action or omission of Customer within his or her control, or is not in wiring or equipment, if any, furnished by Customer and connected to Carrier's terminal. If Customer reports a service, facility or circuit to be inoperative but declines to release it for testing and repair, it is considered to be impaired, but not interrupted.

**A. Computation of Credit Allowances**

1. Credit for failure of service or equipment will be allowed only when failure is caused by or occurs in facilities or equipment owned, provided and billed for, by Carrier.
2. Credit allowances for failure of service or equipment starts when Customer notifies Carrier of the failure or when Carrier becomes aware of the failure and ceases when the operation has been restored and an attempt has been made to notify Customer.
3. For calculating credit allowances, every month is considered to have 30 days. A credit allowance is applied on a pro rata basis against the monthly charges specified hereunder and is dependent upon the length of the interruption. Only those facilities on the interrupted portion of the circuit will receive a credit. Allowances for service outages that exceed 24 hours in duration will be rounded up to the next whole 24 hours.

COMPETITIVE LOCAL EXCHANGE TELECOMMUNICATIONS SERVICES

---

**SECTION 2 – RULES AND REGULATIONS (Continued)**

2.6 **RESPONSIBILITY OF CUSTOMER (Continued)**

2.6.3 Credit Allowances (Continued)

B. Limitations on Credit Allowances

Only those portions of the service or equipment disabled will be credited. No credit will be made:

1. where service is interrupted by the negligence or willful act of the customer to service;
2. where the Carrier, under the terms of the contract for service, suspends or terminates service for nonpayment of charges;
3. for unlawful or improper use of facilities or service.

2.6.4 Cancellation by Customer

If Customer orders service requiring special facilities dedicated to Customer's use and then cancels the order before the service begins, before completion of the minimum service period, or before completion of some other period mutually agreed upon by Customer and Carrier, a charge will be made to Customer for the nonrecoverable portions of expenditures or liabilities incurred expressly on behalf of Customer by Carrier and not fully reimbursed by installation and monthly charges. If, based on the order, any construction has either begun or been completed, but no service provided, the nonrecoverable cost of such construction shall be borne by Customer. Such charge will be determined on a case-by-case basis.

COMPETITIVE LOCAL EXCHANGE TELECOMMUNICATIONS SERVICES

---

**SECTION 2 – RULES AND REGULATIONS (Continued)****2.6 RESPONSIBILITY OF CUSTOMER (Continued)****2.6.5 Payment and Charges for Service**

- A. Charges for service are applied on recurring and nonrecurring bases. Service is billed on a monthly basis and will be prorated if the customer only receives services for a portion of the month. Service continues to be provided until canceled by Customer or by Carrier in accordance with the provisions of this Tariff.
- B. In accordance with 66 Pa. C.S.A. § 1509, the due date for payment of a monthly bill shall be:
  - 1. 15 days from the date of mailing of the bill by the Carrier.
- C. The date of payment made by a Customer by mail shall be as of the date of the postmark of such mailing.
- D. A nonrecurring 1.25 percent per month penalty fee will accrue upon any unpaid amount commencing 5 days after the due date for payment of the bill.
- E. For existing customers whose service is disconnected, the charge for the fraction of the month in which service was furnished will be calculated on a pro rata basis. For this purpose, every month is considered to have 30 days.
- F. Customers may pay for service by credit card, an authorized payment agent, or check.
- G. Carrier will bill Customer a one-time charge of \$10.00 if Customer's check for payment of service is returned for insufficient or uncollected funds, closed accounts, or any other insufficiency or discrepancy necessitating return of the check at the discretion of the drawee bank or other financial institution.



COMPETITIVE LOCAL EXCHANGE TELECOMMUNICATIONS SERVICES

---

**SECTION 2 – RULES AND REGULATIONS (Continued)****2.6 RESPONSIBILITY OF CUSTOMER (Continued)****2.6.6 Application of Charges**

The charges for service are those in effect for the period that service is furnished. If the charge for a service covered by a bill changes after the bill has been rendered, the bill will be adjusted to reflect the new charges.

**2.7 TAXES**

Customer will be billed and is responsible for payment of applicable local, state, and federal taxes, including federal subscriber line charges, assessed in conjunction with service used.

**2.8 RESPONSIBILITY OF CARRIER****2.8.1 Calculation of Credit Allowance**

In accordance with Commission regulations, and pursuant to limitations set forth in Section 2.6.3, when service is interrupted the credit allowance will be computed on the following basis:

- A. When main service is interrupted for a period of at least 24 hours, Carrier, after notice by Customer, shall credit Customer's account with the following allowances, except in situations provided for in subsection B., below:
  1. One-thirtieth of the tariff monthly rate of all services and facilities furnished by Carrier rendered inoperative, useless or substantially impaired for each of the first three full 24-hour periods during which the interruption continues after notice by Customer to Carrier if the out-of-service extends beyond a minimum of 24 hours.
  2. Two-thirtieths of the tariff monthly rate for each full 24-hour period beyond the first three-24-hour periods referred to above. However, in no instance shall the allowance for out-of-service period exceed the total charges in a billing period for the services and facilities furnished by Carrier rendered useless or impaired.
- B. When service is interrupted for a period of at least 24 hours due to storms, fires, floods or other conditions beyond the control of Carrier, an allowance equal to one-thirtieth of the tariff monthly rate for all services and facilities furnished by Carrier rendered inoperative or substantially impaired shall apply for each full 24 hours during which the interruption continues after notice by Customer to Carrier.

COMPETITIVE LOCAL EXCHANGE TELECOMMUNICATIONS SERVICES

---

**SECTION 2 – RULES AND REGULATIONS (Continued)****2.8 RESPONSIBILITY OF CARRIER (Continued)****2.8.2 Cancellation of Credit**

Where Carrier cancels a service and the final service period is less than the monthly billing period, a credit will be issued for any amounts billed in advance, prorated at 1/30th of the monthly recurring charge for each day after the service was discontinued. This credit will be issued to Customer or applied against the balance remaining on Customer's account.

**2.8.3 Disconnection of Service by Carrier**

- A. Carrier shall provide at least 7 days' written notice to the Customer prior to suspension of service, except when suspension is based on an occurrence which endangers the safety of a person or appears likely to prove physically harmful to the service delivery system of the Carrier. A termination notice will be issued immediately after a Customer's service has been suspended. Carrier may terminate service when at least 10 days have passed since suspension of service.
- B. Carrier may discontinue or cancel service without incurring any liability for any of the following reasons:
1. Upon nonpayment of an undisputed delinquent account or the undisputed portion of an account where a dispute exists as to part but not all of an amount billed by Carrier;
  2. Upon unreasonable refusal to permit access to service connections, equipment and other property of the ILEC for maintenance or repair;
  3. Upon violation of any provisions in this Tariff or any other material terms or conditions for furnishing service where such violation threatens the safety of a person or the integrity of the service delivery system of Carrier and/or the ILEC;
  4. Upon violation of any law, rule, or regulation of any government authority having jurisdiction over the service;
  5. In the event Carrier is prohibited from furnishing services by order of a court or other government authority having jurisdiction;
  6. In the event of fraudulent use of Carrier's network, Carrier will discontinue service and/or seek legal recourse to recover all costs involved in enforcement of this provision; or
  7. In the event Customer's use of service interferes with or impairs the use of service rendered to other customers.

COMPETITIVE LOCAL EXCHANGE TELECOMMUNICATIONS SERVICES

---

**SECTION 2 – RULES AND REGULATIONS (Continued)**

2.8 **RESPONSIBILITY OF CARRIER (Continued)**

2.8.4 Restoration of Service

Service shall be restored in accordance with Commission regulations.

2.8.5 Fractional Charges

Charges for a fractional part of a month are calculated by counting the number of days remaining in the billing period after service is furnished. Divide that number of days by 30 days (billing period). The result is then multiplied by the applicable monthly service charge to arrive at the appropriate fractional monthly service charge.

2.9 **RESTORATION OF SERVICE IN EMERGENCIES**

The use and restoration of service in emergencies shall be in accordance with the priority system specified in Part 64, Subpart D of the Rules and Regulations of the Federal Communications Commission.

2.10 **START OF BILLING**

For billing purposes, the start of service is the day following acceptance by Customer of Carrier's service or equipment. The end of service date is the last day of the minimum notification of cancellation or any portion of the last day, after receipt by Carrier of notification of cancellation as described in Section 2.6.4 of this Tariff.

COMPETITIVE LOCAL EXCHANGE TELECOMMUNICATIONS SERVICES

---

**Section 2 – Rules and Regulations (continued)**

**2.11 DISPUTE SETTLEMENT**

- 2.11.1 A Customer dispute brought before the Carrier will be handled in accordance with the Commission's regulations.
- 2.11.2 If a dispute between a Customer and the Carrier cannot be resolved through the procedures set forth therein, the Customer may file an Informal Complaint with the Commission in accordance with the procedures set forth in the Commission's regulations.
- 2.11.3 If a dispute between a Customer and the Carrier cannot be resolved through the Commission's Informal Complaint procedures, the Customer may file a Formal Complaint with the Commission in accordance with the procedures set forth in the Commission's regulations.
- 2.11.4 The address and telephone number of the Commission's Bureau of Consumer Services is as follows:

Pennsylvania Public Utility Commission  
Bureau of Consumer Services  
P.O. Box 3265  
Commonwealth Keystone Building  
400 North Street  
Harrisburg, PA 17105  
(800) 692-7380

By:  
Bradford M. Bono  
Princeton Hosted Solutions, LLC  
700 Godwin Avenue, Suite 330,  
Midland Park, NJ 07432

COMPETITIVE LOCAL EXCHANGE TELECOMMUNICATIONS SERVICES

---

**SECTION 3 - DESCRIPTION OF LOCAL SERVICE AREAS**

3.1 **LOCAL EXCHANGES**

Carrier will be providing service in the local service territories presently served by incumbent local exchange carriers ("ILECs") Verizon Pennsylvania Inc. and Verizon North Inc. and the local calling areas Carrier will use will be identical to the local calling area of these ILECs. Local Exchange Maps that identify the specific local calling areas may be found in each of the ILECs' tariffs. The specific local calling areas served by the Company are provided on the following pages.

## COMPETITIVE LOCAL EXCHANGE TELECOMMUNICATIONS SERVICES

SECTION 3 - DESCRIPTION OF LOCAL SERVICE AREAS (CONTINUED)3.2 LOCAL EXCHANGES AND CALLING AREAS

<b>EXCHANGE AREA</b>	<b>EXCHANGE IN LOCAL SERVICE AREA</b>
Verizon Pennsylvania	
<b>Alexandria</b>	Alexandria, Huntingdon, McConnellstown (CenturyLink)
<b>Aliquippa</b>	Aliquippa, Ambridge, Baden, Glenwillard, Hookstown, Pitb. Subn. Zone 16, Rochester
<b>Allentown</b>	Allentown, Bath, Bethlehem, Catasauqua, Coopersburg (Commonwealth Tel.), Easton, Emmaus (Verizon North), Hellertown, Ironton (Ironton Tel. Co.), Kutztown, Nazareth, New Smithville (Verizon North), New Tripoli (Verizon North), Northampton, Riegelsville, Slatington, Springtown, Topton (Conestoga Tel. & Tel. Co.)
<b>Altoona</b>	Altoona, Bellwood, Cresson, Hollidaysburg, Tyrone
<b>Ambridge</b>	Aliquippa, Ambridge, Baden, Glenwillard, Pitb. Subn. Zone 16
<b>Annville</b>	Annville, Hershey (Verizon North), Jonestown (Verizon North), Lebanon, Mt. Gretna, Palmyra
<b>Ashland</b>	Ashland, Frackville, Girardville, Kulpmont, Mt. Carmel, Shenandoah
<b>Austin</b>	Austin, Coudersport
<b>Avella</b>	Avella, Burgettstown, Washington
<b>Avis</b>	Avis, Jersey Shore, Lock Haven, Woolrich
<b>Avondale</b>	Avondale, Coatesville, Kemblesville, Kennett Square, Landenberg, Lenape, Mendenhall, Mortonville, Oxford, Unionville, West Chester, West Grove, Westtown, Hockessin, DE. (Verizon -- DE.), Wilmington, DE. (Verizon -- DE.)
<b>Baden</b>	Aliquippa, Ambridge, Baden, Rochester
<b>Barnesboro</b>	Barnesboro, Carrolltown, Cherry Tree, Glen Campbell, Hastings, Patton

Issued: May 19, 2012

Effective: May 23, 2012

By:  
Bradford M. Bono  
Princeton Hosted Solutions, LLC  
700 Godwin Avenue, Suite 330,  
Midland Park, NJ 07432

## COMPETITIVE LOCAL EXCHANGE TELECOMMUNICATIONS SERVICES

<b>Bath</b>	Allentown, Bath, Bethlehem, Catasauqua, Easton, Nazareth, Northampton, Slatington
<b>Beaver Falls</b>	Beaver Falls, Darlington (Windstream), Ellwood City, Enon Valley (Windstream), Hookstown, Midland, Rochester, Wampum, Zelenople
<b>Bedminster</b>	Bedminster, Carversville, Doylestown, Dublin, Ferndale (Commonwealth Tel.), Perkasio, Plumsteadville, Quakertown
<b>Bellefonte</b>	Bellefonte, Boalsburg, Centre Hall, Howard (CenturyLink), Snow Shoe, Spring Mills, State College, Zion (CenturyLink)
<b>Belle Vernon</b>	Belle Vernon, California, Charleroi, Donora, Fayette City, Monessen, Monongahela, Perryopolis, West Newton
<b>Bellwood</b>	Altoona, Bellwood, Tyrone
<b>Berwick</b>	Berwick, Bloomsburg, Shickshinny (Commonwealth Tel.), Wapwallopen (Commonwealth Tel.)
<b>Bessemer</b>	Bessemer, New Castle
<b>Bethlehem</b>	Allentown, Bath, Bethlehem, Catasauqua, Coopersburg (Commonwealth Tel.), Easton, Hellertown, Ironton (Ironton Tel. Co.), Nazareth, Northampton, Riegelsville, Slatington, Springtown
<b>Big Run</b>	Big Run, Punxsutawney
<b>Black Lick</b>	Black Lick, Blairsville, Homer City, Indiana
<b>Blairsville</b>	Black Lick, Blairsville, Bolivar, Derry, Homer City, Indiana, Latrobe
<b>Bloomsburg</b>	Berwick, Bloomsburg, Catawissa, Danville, Millville, Numidia, Orangeville (Commonwealth Tel.), Washingtonville
<b>Boalsburg</b>	Bellefonte, Boalsburg, Centre Hall, Spring Mills, State College
<b>Bolivar</b>	Blairsville, Bolivar, New Florence
<b>Bradford</b>	Bradford, Duke Center (Armstrong North), Eldred, Mount Jewett, Rew, Smethport, Limestone, NY (Verizon - NY)
<b>Brownsville</b>	Brownsville, California, Charleroi, New Salem, Republic, Smock, Uniontown

Issued: May 19, 2012

Effective: May 23, 2012

By:  
Bradford M. Bono  
Princeton Hosted Solutions, LLC  
700 Godwin Avenue, Suite 330,  
Midland Park, NJ 07432

## COMPETITIVE LOCAL EXCHANGE TELECOMMUNICATIONS SERVICES

<b>Buckingham</b>	Buckingham, Carversville, Doylestown, New Hope, Phila. Subn. Zone 45, Wycombe
<b>Burgettstown</b>	Avella, Burgettstown, McDonald, Midway (Windstream), Murdocksville (Armstrong), Paris
<b>Bushkill</b>	Bushkill, Lords Valley, Stroudsburg, Stroudsburg, NJ (Verizon – NJ)
<b>California</b>	Belle Vernon, Brownsville, California, Charleroi, Fayette City
<b>Canonsburg</b>	Canonsburg, Hickory (Hickory Tel. Co.), McDonald, McMurray, Pitb. Subn. Zone 13, Washington
<b>Carbondale</b>	Carbondale, Chapman Lake (Verizon North), Clifford (The North-Eastern Pa. Tel. Co.), Forest City (The North-Eastern Pa. Tel. Co.), Jermyn, Olyphant, Scranton, Waymart (The South Canaan Tel. Co.)
<b>Carrolltown</b>	Barnesboro, Carrolltown, Ebensburg, Hastings, Patton
<b>Carversville</b>	Bedminster, Buckingham, Carversville, Doylestown, Dublin, New Hope, Plumsteadville, Wycombe
<b>Catasauqua</b>	Allentown, Bath, Bethlehem, Catasauqua, Easton, Hellertown, Ironton (Ironton Tel. Co.), Nazareth, Northampton, Riegelsville, Slatington, Springtown
<b>Catawissa</b>	Bloomsburg, Catawissa, Danville, Elysburg, Numidia
<b>Center Point</b>	Center Point, Collegeville, Harleysville, Lansdale, Phila. Subn. Zone 30, North Wales, Schwenksville
<b>Centre Hall</b>	Bellefonte, Boalsburg, Centre Hall, Millheim, Spring Mills, State College
<b>Charleroi</b>	Belle Vernon, Brownsville, California, Charleroi, Donora, Fayette City, Monessen, Monongahela
<b>Cherry Tree</b>	Barnesboro, Cherry Tree, Clymer, Glen Campbell
<b>Chester Springs</b>	Chester Springs, Eagle, Exton, Phila. Subn. Zone 28, Phoenixville, Pughtown, Royersford

Issued: May 19, 2012

Effective: May 23, 2012

By:  
Bradford M. Bono  
Princeton Hosted Solutions, LLC  
700 Godwin Avenue, Suite 330,  
Midland Park, NJ 07432



## COMPETITIVE LOCAL EXCHANGE TELECOMMUNICATIONS SERVICES

<b>Clairton</b>	Clairton, Elizabeth, Pitb. Subn. Zone 10, Pitb. Subn. Zone 11
<b>Clarion</b>	Clarion, Knox (Windstream), Leeper, Shippenville (Windstream), Sligo (Windstream), Strattanville (Windstream)
<b>Claysville</b>	Claysville, Washington, West Alexander
<b>Clearfield</b>	Clearfield, Curwensville, Frenchville, Osceola Mills, Philipsburg, Winburne
<b>Clymer</b>	Clymer, Indiana
<b>Coatesville</b>	Avondale, Coatesville, Downingtown, Eagle, Exton, Glenmoore, Honey Brook, Kennett Square, Lenape, Mortonville, Parkesburg, Unionville, West Chester, West Grove, Westtown
<b>Collegeville</b>	Center Point, Collegeville, Green Lane, Harleysville, Lansdale, North Wales, Phila. Subn. Zone 29, Phila. Subn. Zone 30, Phila. Subn. Zone 31, Phoenixville, Pottstown, Royersford, Schwenksville, Souderton
<b>Connellsville</b>	Connellsville, Dawson, Mount Pleasant, Scottdale, Uniontown
<b>Coudersport</b>	Austin, Coudersport, Roulette, Ulysses
<b>Cresco</b>	Cresco, Lords Valley, Mount Pocono, Newfoundland, Stroudsburg
<b>Cresson</b>	Altoona, Cresson, Ebensburg, Hollidaysburg, Portage
<b>Curwensville</b>	Clearfield, Curwensville, Mahaffey
<b>Danville</b>	Bloomsburg, Catawissa, Danville, Elysburg, Northumberland, Sunbury, Washingtonville
<b>Dauphin</b>	Dauphin, Halifax, Harrisburg Zone 1
<b>Dawson</b>	Connellsville, Dawson, Perryopolis, Scottdale
<b>Derry</b>	Blairsville, Derry, Greensburg, Latrobe
<b>Donora</b>	Belle Vernon, Charleroi, Donora, Elizabeth, Monessen, Monongahela
<b>Downingtown</b>	Chester Springs, Coatesville, Downingtown, Eagle, Exton, Glenmoore, Honey Brook, Lenape, Mortonville, Phila. Subn. Zone 28, Pughtown, West Chester, Westtown

Issued: May 19, 2012

Effective: May 23, 2012

By:  
Bradford M. Bono  
Princeton Hosted Solutions, LLC  
700 Godwin Avenue, Suite 330,  
Midland Park, NJ 07432

## COMPETITIVE LOCAL EXCHANGE TELECOMMUNICATIONS SERVICES

<b>Doylestown</b>	Buckingham, Carversville, Doylestown, Dublin, Line Lexington, Phila. Subn. Zone 45, Plumsteadville, Wycombe
<b>Dublin</b>	Bedminster, Buckingham, Carversville, Doylestown, Dublin, Lansdale, Line Lexington, Perkasio, Plumsteadville, Quakertown, Souderton
<b>DuBois</b>	Brockway (Windstream), DuBois, Luthersburg (Windstream), Penfield (Windstream), Reynoldsville, Sykesville
<b>Eagle</b>	Chester Springs, Coatesville, Downingtown, Eagle, Exton, Glenmoore, Phila. Subn. Zone 28, Phoenixville, Pughtown, Royersford, West Chester
<b>Easton</b>	Allentown, Bethlehem, Bloomsbury, NJ (Verizon – NJ), Catasauqua, Easton, Hellertown, Nazareth, Phillipsburg, NJ (Verizon – NJ), Riegelsville, Springtown, Upper Black Eddy
<b>East Palestine</b>	East Palestine, Pa., East Palestine, O. (AMERITECH, O.), New Waterford, O. (AMERITECH, O.), Rogers, O. (AMERITECH, O.)
<b>Ebensburg</b>	Carrolltown, Colver (Windstream), Cresson, Ebensburg, Nanty-Glo (Verizon North), Johnstown (Verizon North)
<b>Eldred</b>	Bradford, Duke Center (Armstrong North), Eldred, Port Allegheny, Rew, Smethport
<b>Elizabeth</b>	Clairton, Donora, Elizabeth, Monongahela, Pitb. Subn. Zone 10, Pitb. Subn. Zone 11
<b>Ellwood City</b>	Beaver Falls, Ellwood City, New Castle, Portersville (CenturyLink), Wampum, Zelenople
<b>Elysburg</b>	Catawissa, Danville, Elysburg, Kulpmont, Mt. Carmel, Numidia, Shamokin, Sunbury
<b>Endeavor</b>	Endeavor, Tidioute, Tionesta
<b>Exton</b>	Chester Springs, Coatesville, Downingtown, Eagle, Exton, Glenmoore, Lenape, Mortonville, Phila. Subn. Zone 28, Pughtown, West Chester, Westtown
<b>Fairchance</b>	Fairchance, Masontown, McClellandtown, Point Marion, Smithfield, Uniontown
<b>Farmington</b>	Farmington, Uniontown

Issued: May 19, 2012

Effective: May 23, 2012

By:  
Bradford M. Bono  
Princeton Hosted Solutions, LLC  
700 Godwin Avenue, Suite 330,  
Midland Park, NJ 07432

## COMPETITIVE LOCAL EXCHANGE TELECOMMUNICATIONS SERVICES

<b>Fayette City</b>	Belle Vernon, California, Charleroi, Fayette City, Monessen, Perryopolis
<b>Finleyville</b>	Finleyville, McMurray, Monongahela, Pitb. Subn. Zone 11, Pitb. Subn. Zone 12
<b>Fleetwood</b>	Fleetwood, Kutztown, Leesport (Commonwealth Tel.), Oley (The Conestoga Tel. and Tel. Co.), Reading, Topton (The Conestoga Tel. and Tel. Co.)
<b>Frackville</b>	Ashland, Frackville, Girardville, Mahanoy City, Minersville, Pottsville, Saint Clair, Shenandoah
<b>Freeland</b>	Freeland, Hazleton, McAdoo, Weatherly, White Haven
<b>Frenchville</b>	Clearfield, Frenchville, Philipsburg, Snow Shoe, Winburne
<b>Galeton</b>	Galeton
<b>Girardville</b>	Ashland, Frackville, Girardville, Mahanoy City, Shenandoah
<b>Glen Campbell</b>	Barnesboro, Cherry Tree, Glen Campbell
<b>Glenmoore</b>	Chester Springs, Coatesville, Downingtown, Eagle, Exton, Green Hills (The Conestoga Tel. and Tel. Co.), Glenmoore, Honey Brook, Morgantown (The Conestoga Tel. and Tel. Co.), Parkesburg, Pughtown, West Chester
<b>Glenwillard</b>	Aliquippa, Ambridge, Glenwillard, Pitb. Subn. Zone 15, Pitb. Subn. Zone 16
<b>Green Lane</b>	Center Point, Collegeville, Green Lane, Harleysville, Lansdale, Pennsburg, Perkasio, Quakertown, Schwenksville, Souderton, Sassamansville (The Conestoga Tel. and Tel. Co.)
<b>Greensburg</b>	Delmont (Windstream), Greensburg, Herminie, Jeannette, Kecksburg (Citizens Tel. Co. of Kecksburg), Latrobe, New Alexandria (Windstream), Youngwood
<b>Greenville</b>	Greenville, Sharpsville, Sheakleyville (Windstream), Transfer (The Pymatuning Ind. Tel. Co.)
<b>Grove City</b>	Blacktown (CenturyLink), Grove City, Harrisville (CenturyLink), Mercer, Wesley (Verizon North)

Issued: May 19, 2012

Effective: May 23, 2012

By:  
Bradford M. Bono  
Princeton Hosted Solutions, LLC  
700 Godwin Avenue, Suite 330,  
Midland Park, NJ 07432

## COMPETITIVE LOCAL EXCHANGE TELECOMMUNICATIONS SERVICES

<b>Halifax</b>	Dauphin, Elizabethville (Commonwealth Tel.), Halifax, Harrisburg Zone 1, Millersburg (Commonwealth Tel.)
<b>Hamburg</b>	Hamburg, Kempton (Verizon North), Leesport (Commonwealth Tel.), Reading
<b>Hamlin</b>	Hamlin, Lake Ariel, Moscow, Newfoundland, Olyphant, Scranton, Wallenpaupack
<b>Harleysville</b>	Center Point, Collegeville, Green Lane, Harleysville, Lansdale, Line Lexington, North Wales, Perkasie, Phila. Subn. Zone 30, Schwenksville, Souderton
<b>Harrisburg</b>	
Zone 1	Dauphin, Halifax, Harrisburg Zone 1, Harrisburg Zone 2, Hershey (Verizon North), Hummelstown, Lewisberry (Commonwealth Tel.), Marysville (CenturyLink), Mechanicsburg, Middletown, Shellsville (Verizon North)
Zone 2	Harrisburg Zone 1, Harrisburg Zone 2, Hershey (Verizon North), Hummelstown, Middletown
<b>Hastings</b>	Barnesboro, Carrolltown, Hastings, Patton
<b>Hawley</b>	Hawley, Honesdale, Lords Valley, Newfoundland, Wallenpaupack
<b>Hazleton</b>	Conyngham-Drums (Commonwealth Tel.), Freeland, Hazleton, McAdoo, Nuremburg (Commonwealth Tel.), Weatherly, White Haven
<b>Hellertown</b>	Allentown, Bethlehem, Catasauqua, Easton, Hellertown, Riegelsville, Springtown
<b>Herminie</b>	Greensburg, Herminie, Jeannette, Pitb. Subn. Zone 23
<b>Hollidaysburg</b>	Altoona, Cresson, Hollidaysburg
<b>Homer City</b>	Black Lick, Blairsville, Homer City, Indiana
<b>Honesdale</b>	Beach Lake (Verizon North), Galilee (Verizon North), Hawley, Honesdale, Lake Ariel, Lords Valley, Pleasant Mount (The North-Eastern Pa. Tel.Co.), South Canaan (The South Canaan Tel.Co.), Wallenpaupack, Waymart (The South Canaan Tel. Co.)

Issued: May 19, 2012

Effective: May 23, 2012

By:  
Bradford M. Bono  
Princeton Hosted Solutions, LLC  
700 Godwin Avenue, Suite 330,  
Midland Park, NJ 07432

## COMPETITIVE LOCAL EXCHANGE TELECOMMUNICATIONS SERVICES

<b>Honey Brook</b>	Coatesville, Downingtown, Glenmoore, Green Hills (The Conestoga Tel. and Tel. Co.), Honey Brook, Morgantown (The Conestoga Tel. and Tel. Co.), Parkesburg
<b>Hookstown</b>	Aliquippa, Beaver Falls, Chester, W. Va. (Verizon – W. Va.), East Liverpool, O. (AMERITECH, O.), Hookstown, Midland, Rochester, Smiths Ferry
<b>Houtzdale</b>	Clearfield, Houtzdale, Osceola Mills, Philipsburg
<b>Hummelstown</b>	Harrisburg Zone 1, Harrisburg Zone 2, Hershey (Verizon North), Hummelstown, Middletown, Palmyra, Shellsville (Verizon North)
<b>Huntingdon</b>	Alexandria, Huntingdon, Marklesburg (CenturyLink), McConnellstown (CenturyLink), Mount Union
<b>Imperial</b>	Imperial, McDonald, Murdocksville (Armstrong), Oakdale, Pitb. Subn. Zone 14, Pitb. Subn. Zone 15
<b>Indiana</b>	Black Lick, Blairsville, Clymer, Elderton (Windstream), Homer City, Indiana, Marion Center, Parkwood
<b>Jeannette</b>	Greensburg, Harrison City (Windstream), Herminie, Jeannette, Pitb. Subn. Zone 23
<b>Jermyn</b>	Carbondale, Chapman Lake (Verizon North), Jermyn, Olyphant, Scranton
<b>Jersey Shore</b>	Avis, Jersey Shore, Lock Haven, Oval (Pennsylvania Tel. Co.), Williamsport, Woolrich
<b>Jim Thorpe</b>	Jim Thorpe, Lehighon, Nesquehoning, Weatherly, White Haven
<b>Kane</b>	Kane, Ludlow, Mount Jewett
<b>Kemblesville</b>	Avondale, Kemblesville, Kennett Square, Landenberg, Mendenhall, Oxford, Unionville, West Grove, Hockessin, DE (Verizon – DE), Newark, DE (Verizon – DE)
<b>Kennett Square</b>	Avondale, Coatesville, Kemblesville, Kennett Square, Landenberg, Lenape, Mendenhall, Mortonville, Unionville, West Chester, West Grove, Westtown, Hockessin, DE (Verizon – DE), Wilmington, DE (Verizon – DE)

Issued: May 19, 2012

Effective: May 23, 2012

By:  
Bradford M. Bono  
Princeton Hosted Solutions, LLC  
700 Godwin Avenue, Suite 330,  
Midland Park, NJ 07432

## COMPETITIVE LOCAL EXCHANGE TELECOMMUNICATIONS SERVICES

<b>Kingston</b>	Center Moreland (Commonwealth Tel.), Dallas (Commonwealth Tel.), Harveys Lake (Commonwealth Tel.), Kingston, Mountaintop, Nanticoke, Pittston, Plymouth, Trucksville (Commonwealth Tel.), Wilkes-Barre, Wyoming
<b>Kulpmont</b>	Ashland, Elysburg, Kulpmont, Mount Carmel, Shamokin
<b>Kutztown</b>	Allentown, Fleetwood, Kempton (Verizon North), Kutztown, Reading, Topton (The Conestoga Tel. and Tel. Co.)
<b>Lake Ariel</b>	Hamlin, Honesdale, Lake Ariel, Newfoundland, Olyphant, Scranton, South Canaan (The South Canaan Tel. Co.), Wallenpaupack, Waymart (The South Canaan Tel.Co.)
<b>Lake Como</b>	Lake Como
<b>Lancaster</b>	Intercourse (Frontier Comm. Of PA), Lancaster, Landisville, Leola (Frontier Comm. Of PA), Lititz (Denver & Ephrata Tel. and Tel. Co.), Manheim (Denver & Ephrata Tel. and Tel. Co.), Millersville, Mount Joy (CenturyLink), Mountville (CenturyLink), New Holland (Frontier Comm. Of PA), Quarryville (Commonwealth Tel.), Rawlinsville (Commonwealth Tel.), Strasburg
<b>Landenberg</b>	Avondale, Kemblesville, Kennett Square, Landenberg, Lenape, Mendenhall, Oxford, Unionville, West Chester, West Grove, Westtown, Hockessin, DE (Verizon – DE), Newark, DE (Verizon – DE), Wilmington, DE (Verizon – DE)
<b>Landisville</b>	Lancaster, Landisville, Lititz (Denver & Ephrata Tel. and Tel. Co.), Manheim (Denver & Ephrata Tel. and Tel. Co.), Millersville, Mount Joy (CenturyLink), Mountville (CenturyLink), Strasburg
<b>Lansdale</b>	Center Point, Harleysville, Lansdale, Line Lexington, North Wales, Souderton
<b>Latrobe</b>	Blairsville, Derry, Greensburg, Kecksburg (Citizens Tel. Co. of Kecksburg), Latrobe, Ligonier, New Alexandria (Windstream)
<b>Lebanon</b>	Annvile, Frystown (Verizon North), Hershey (Verizon North), Jonestown (Verizon North), Lebanon, Mt. Gretna, Myerstown (Verizon North), Palmyra, Schaefferstown (Verizon North)
<b>Leeper</b>	Clarion, Leeper, Marienville
<b>Lehighton</b>	Jim Thorpe, Lehighton, Nesquehoning, Palmerton (Palmerton Tel. Co.)

Issued: May 19, 2012

Effective: May 23, 2012

By:  
Bradford M. Bono  
Princeton Hosted Solutions, LLC  
700 Godwin Avenue, Suite 330,  
Midland Park, NJ 07432

## COMPETITIVE LOCAL EXCHANGE TELECOMMUNICATIONS SERVICES

<b>Lenape</b>	Avondale, Coatesville, Downingtown, Exton, Kennett Square, Landenberg, Lenape, Mendenhall, Mortonville, Phila. Subn. Zone 10, Phila. Subn. Zone 28, Unionville, West Chester, West Grove, Westtown
<b>Lewistown</b>	Belleville (CenturyLink), Lewistown, McVeytown, Mifflintown (CenturyLink), Port Royal (CenturyLink), Reedsville (CenturyLink)
<b>Ligonier</b>	Latrobe, Ligonier, Stahlstown (Laurel Highland Tel. Co.)
<b>Line Lexington</b>	Doylestown, Dublin, Harleysville, Lansdale, Line Lexington, North Wales, Perkasie, Phila. Subn. Zone 45, Souderton
<b>Lock Haven</b>	Avis, Beech Creek (CenturyLink), Jersey Shore, Lock Haven, Mill Hall (CenturyLink), Woolrich
<b>Lords Valley</b>	Bushkill, Cresco, Hawley, Honesdale, Lords Valley, Mount Pocono, Newfoundland, Stroudsburg, Wallenpaupack
<b>Lowellville</b>	Bessemer, Hubbard, O. (AMERITECH, O.), Lowellville, Lowellville, O. (AMERITECH, O.), New Castle, North Lima, O. (AMERITECH, O.), Youngstown, O. (AMERITECH, O.)
<b>Ludlow</b>	Kane, Ludlow
<b>Mahaffey</b>	Mahaffey, Curwensville
<b>Mahanoy City</b>	Frackville, Girardville, Lakewood (Frontier Comm. -- Lakewood), Mahanoy City, Shenandoah, Tamaqua
<b>Marchand</b>	Marchand, Punxsutawney
<b>Marienville</b>	Leeper, Marienville
<b>Marion Center</b>	Indiana, Marion Center
<b>Masontown</b>	Fairchance, Masontown, McClellandtown, Point Marion, Smithfield, Uniontown
<b>McAdoo</b>	Freeland, Hazleton, McAdoo, Tamaqua, Weatherly
<b>McClellandtown</b>	Fairchance, Masontown, McClellandtown, Smithfield, Uniontown
<b>McDonald</b>	Burgettstown, Canonsburg, Imperial, McDonald, Midway (Windstream), Oakdale, Pitb. Subn. Zone 13

Issued: May 19, 2012

Effective: May 23, 2012

By:  
Bradford M. Bono  
Princeton Hosted Solutions, LLC  
700 Godwin Avenue, Suite 330,  
Midland Park, NJ 07432

## COMPETITIVE LOCAL EXCHANGE TELECOMMUNICATIONS SERVICES

<b>McMurray</b>	Canonsburg, Finleyville, McMurray, Pitb. Subn. Zone 12, Pitb. Subn. Zone 13
<b>McVeytown</b>	Lewistown, McVeytown
<b>Mechanicsburg</b>	Dillsburg (Verizon North), Harrisburg Zone 1, Lewisberry (Commonwealth Tel.), Mechanicsburg
<b>Mendenhall</b>	Avondale, Kemblesville, Kennett Square, Landenberg, Lenape, Mendenhall, Phila. Subn. Zone 10, Unionville, West Chester, West Grove, Westtown, Hockessin, DE (Verizon – DE), Wilmington, DE (Verizon – DE)
<b>Mercer</b>	Blacktown (CenturyLink), Fredonia (Windstream), Grove City, Mercer, Sharon, Sharpsville, Wesley (Verizon North)
<b>Middletown</b>	Elizabethtown (CenturyLink), Harrisburg Zone 1, Harrisburg Zone 2, Hershey (Verizon North), Hummelstown, Middletown
<b>Midland</b>	Beaver Falls, Hookstown, Midland, Rochester, Smiths Ferry
<b>Millersville</b>	Lancaster, Landisville, Millersville, Mountville (CenturyLink), Strasburg
<b>Millheim</b>	Bellefonte, Boalsburg, Centre Hall, Millheim, Spring Mills, State College
<b>Millville</b>	Bloomsburg, Millville, Washingtonville
<b>Milton</b>	Lewisburg (Buffalo Valley Tel. Co.), Mifflinburg (Buffalo Valley Tel. Co.), Milton, Northumberland, Sunbury, Washingtonville, Watsontown (Windstream)
<b>Minersville</b>	Frackville, Minersville, New Philadelphia, Orwigsburg, Pottsville, Saint Clair, Schuylkill Haven, Tremont (Commonwealth Tel.)
<b>Monessen</b>	Belle Vernon, Charleroi, Donora, Fayette City, Monessen, Monongahela
<b>Monongahela</b>	Belle Vernon, Charleroi, Donora, Elizabeth, Finleyville, Monessen, Monongahela
<b>Moosic</b>	Moosic, Pittston, Scranton, Taylor, Wyoming

Issued: May 19, 2012

Effective: May 23, 2012

By:  
Bradford M. Bono  
Princeton Hosted Solutions, LLC  
700 Godwin Avenue, Suite 330,  
Midland Park, NJ 07432



## COMPETITIVE LOCAL EXCHANGE TELECOMMUNICATIONS SERVICES

<b>Morrisville</b>	Ewing, NJ (Verizon – NJ), Morrisville, Newtown, Phila. Subn. Zone 42, Phila. Subn. Zone 43, Phila. Subn. Zone 44, Trenton, NJ (Verizon – NJ), Yardley
<b>Mortonville</b>	Avondale, Coatesville, Downingtown, Exton, Kennett Square, Lenape, Mortonville, Parkesburg, Unionville, West Chester, West Grove, Westtown
<b>Moscow</b>	Hamlin, Moscow, Newfoundland, Scranton, Wallenpaupack
<b>Mountaintop</b>	Kingston, Mountaintop, Nanticoke, Nuangola (Commonwealth Tel.), Plymouth, Wilkes-Barre
<b>Mount Carmel</b>	Ashland, Elysburg, Kulpmont, Mount Carmel, Shamokin
<b>Mount Gretna</b>	Annville, Lebanon, Mount Gretna, Palmyra
<b>Mount Jewett</b>	Bradford, Mount Jewett, Kane
<b>Mount Pleasant</b>	Connellsville, Greensburg, Kecksburg (Citizens Tel. Co. of Kecksburg), Mount Pleasant, Scottsdale, Youngwood
<b>Mount Pocono</b>	Cresco, Lords Valley, Mount Pocono, Newfoundland, Stroudsburg
<b>Mount Union</b>	Huntingdon, McConnellstown (CenturyLink), Mount Union
<b>Nanticoke</b>	Kingston, Mountaintop, Nanticoke, Nuangola (Commonwealth Tel.), Plymouth, Wilkes-Barre
<b>Nazareth</b>	Allentown, Bath, Bethlehem, Catasauqua, Easton, Nazareth
<b>Nesquehoning</b>	Jim Thorpe, Lansford (Windstream), Lehighon, Nesquehoning
<b>New Castle</b>	Bessemer, Ellwood City, New Bedford (Verizon North), New Castle, New Wilmington (Verizon North), Plain Grove (CenturyLink), Princeton (Verizon North), Volant (CenturyLink), Wampum
<b>New Florence</b>	Bolivar, Johnstown, New Florence, Seward
<b>Newfoundland</b>	Cresco, Hamlin, Hawley, Lake Ariel, Lords Valley, Moscow, Mount Pocono, Newfoundland, Wallenpaupack

Issued: May 19, 2012

Effective: May 23, 2012

By:  
Bradford M. Bono  
Princeton Hosted Solutions, LLC  
700 Godwin Avenue, Suite 330,  
Midland Park, NJ 07432

## COMPETITIVE LOCAL EXCHANGE TELECOMMUNICATIONS SERVICES

<b>New Hope</b>	Buckingham, Carversville, Doylestown, Lambertville, NJ (Verizon – NJ), New Hope, Newtown, Plumsteadville, Wycombe, Yardley
<b>New Kensington</b>	New Kensington, Pitb. Subn. Zone 20, Springdale, Tarentum
<b>New Philadelphia</b>	Minersville, New Philadelphia, Orwigsburg, Pottsville, Saint Clair, Schuylkill Haven, Tamaqua
<b>New Salem</b>	Brownsville, New Salem, Republic, Uniontown
<b>Newtown</b>	Newtown, Phila. Subn. Zone 40, Phila. Subn. Zone 43, Wycombe, Yardley
<b>Northampton</b>	Allentown, Bath, Bethlehem, Catasauqua, Ironton (Ironton Tel. Co.), Northampton, Slatington
<b>Northumberland</b>	Danville, Milton, Northumberland, Sunbury
<b>North Wales</b>	Center Point, Harleysville, Lansdale, Line Lexington, North Wales, Phila. Subn. Zone 30, Phila. Subn. Zone 33, Souderton
<b>Numidia</b>	Bloomsburg, Catawissa, Elysburg, Numidia
<b>Oakdale</b>	Imperial, McDonald, Oakdale, Pitb. Subn. Zone 13, Pitb. Subn. Zone 14
<b>Olyphant</b>	Carbondale, Chapman Lake (Verizon North), Hamlin, Jermyn, Lake Ariel, Olyphant, Scranton, Taylor
<b>Orwigsburg</b>	Auburn (Verizon North), Minersville, New Philadelphia, Orwigsburg, Pottsville, Saint Clair, Schuylkill Haven
<b>Osceola Mills</b>	Clearfield, Houtzdale, Osceola Mills, Philipsburg
<b>Oxford</b>	Avondale, Kemblesville, Kirkwood (Commonwealth Tel.), Landenberg, Oxford, West Grove
<b>Palmyra</b>	Annville, Harrisburg Zone 1, Hershey (Verizon North), Hummelstown, Lebanon, Mount Gretna, Palmyra
<b>Paris</b>	Burgettstown, Paris, Weirton, W. Va. (Verizon – W. Va.)
<b>Parquesburg</b>	Atglen (Commonwealth Tel.), Coatesville, Gap (Commonwealth Tel.), Glenmoore, Honey Brook, Mortonville, Parkesburg, West Grove

Issued: May 19, 2012

Effective: May 23, 2012

By:  
Bradford M. Bono  
Princeton Hosted Solutions, LLC  
700 Godwin Avenue, Suite 330,  
Midland Park, NJ 07432

## COMPETITIVE LOCAL EXCHANGE TELECOMMUNICATIONS SERVICES

<b>Parkwood</b>	Indiana, Parkwood
<b>Patton</b>	Altoona, Barnesboro, Carrolltown, Hastings, Patton
<b>Pennsburg</b>	Bally (The Conestoga Tel. and Tel. Co.), Green Lane, Pennsburg, Perkasia, Quakertown, Sassamansville (The Conestoga Tel. and Tel. Co.), Souderton
<b>Perkasia</b>	Bedminster, Doylestown, Dublin, Green Lane, Harleysville, Lansdale, Line Lexington, Pennsburg, Perkasia, Plumsteadville, Quakertown, Schwenksville, Souderton
<b>Perryopolis</b>	Belle Vernon, Dawson, Fayette City, Perryopolis, Uniontown
<b>Philipsburg</b>	Clearfield, Frenchville, Houtzdale, Osceola Mills, Philipsburg, Winburne
<b>Phoenixville</b>	Chester Springs, Collegeville, Eagle, Phila. Subn. Zone 28, Phila. Subn. Zone 29, Phoenixville, Pughtown, Royersford
<b>Pittston</b>	Harding (Commonwealth Tel.), Kingston, Moosic, Pittston, Scranton, Taylor, Wilkes-Barre, Wyoming
<b>Plumsteadville</b>	Bedminster, Buckingham, Carversville, Doylestown, Dublin, Ferndale (Commonwealth Tel.), Line Lexington, New Hope, Perkasia, Plumsteadville, Quakertown
<b>Plymouth</b>	Kingston, Mountaintop, Nanticoke, Plymouth, Wilkes-Barre
<b>Point Marion</b>	Cheat Lake (Verizon – W. Va.), Fairchance, Masontown, Point Marion, Morgantown, W. Va. (Verizon – W. Va.), Smithfield, Uniontown
<b>Portage</b>	Cresson, Ebensburg, Johnston, Portage, Southfork
<b>Port Allegany</b>	Eldred, Port Allegany, Roulette, Smethport
<b>Pottstown</b>	Boyertown (The Conestoga Tel. and Tel. Co.), Collegeville, Douglassville (The Conestoga Tel. and Tel. Co.), Phoenixville, Pottstown, Pughtown, Royersford, Sassamansville (The Conestoga Tel. and Tel. Co.), Schwenksville
<b>Pottsville</b>	Auburn (Verizon North), Frackville, Friedensburg (Verizon North), Minersville, New Philadelphia, Orwigsburg, Pottsville, Saint Clair, Schuylkill Haven, Tamaqua

Issued: May 19, 2012

Effective: May 23, 2012

By:  
Bradford M. Bono  
Princeton Hosted Solutions, LLC  
700 Godwin Avenue, Suite 330,  
Midland Park, NJ 07432

## COMPETITIVE LOCAL EXCHANGE TELECOMMUNICATIONS SERVICES

<b>Pughtown</b>	Chester Springs, Downingtown, Eagle, Exton, Glenmoore, Green Hills (The Conestoga Tel. and Tel. Co.), Morgantown (The Conestoga Tel. and Tel. Co.), Phoenixville, Pottstown, Pughtown, Royersford
<b>Punxsutawney</b>	Big Run, Marchand, Punxsutawney
<b>Quakertown</b>	Bedminster, Dublin, Ferndale (Commonwealth Tel.), Green Lane, Pennsburg, Perkasio, Plumsteadville, Quakertown, Souderton, Springtown
<b>Reading</b>	Adamstown (Denver & Ephrata Tel. and Tel. Co.), Bernville (Verizon North), Birdsboro (The Conestoga Tel. and Tel. Co.), Fleetwood, Green Hills (The Conestoga Tel. and Tel. Co.), Hamburg, Kutztown, Leesport (Commonwealth Tel.), Morgantown (The Conestoga Tel. and Tel. Co.), Oley (The Conestoga Tel. and Tel. Co.), Reading, Robesonia (Verizon North), Topton (The Conestoga Tel. and Tel. Co.), Womelsdorf (Verizon North), Yellow House (The Conestoga Tel. and Tel. Co.)
<b>Renovo</b>	Renovo
<b>Republic</b>	Brownsville, New Salem, Republic, Uniontown
<b>Rew</b>	Bradford, Duke Center (Armstrong North), Eldred, Limestone, NY (Verizon – NY), Rew, Smethport
<b>Reynoldsville</b>	DuBois, Reynoldsville, Sykesville
<b>Riegelsville</b>	Allentown, Bethlehem, Catasauqua, Easton, Ferndale (Commonwealth Tel.), Hellertown, Milford, NJ (Verizon – NJ), Phillipsburg, NJ (Verizon – NJ), Riegelsville, Springtown, Upper Black Eddy
<b>Rochester</b>	Aliquippa, Ambridge, Baden, Beaver Falls, Hookstown, Midland, Rochester
<b>Roulette</b>	Coudersport, Port Allegany, Roulette
<b>Royersford</b>	Center Point, Chester Springs, Collegeville, Eagle, Phila. Subn. Zone 29, Phila. Subn. Zone 30, Phoenixville, Pottstown, Pughtown, Royersford, Schwenksville
<b>Russell</b>	Russell, Sugar Grove, Warren, Youngsville
<b>Saint Clair</b>	Frackville, Minersville, New Philadelphia, Orwigsburg, Pottsville, Saint Clair, Schuylkill Haven

Issued: May 19, 2012

Effective: May 23, 2012

By:  
Bradford M. Bono  
Princeton Hosted Solutions, LLC  
700 Godwin Avenue, Suite 330,  
Midland Park, NJ 07432

## COMPETITIVE LOCAL EXCHANGE TELECOMMUNICATIONS SERVICES

<b>Saxton</b>	Hopewell (CenturyLink), Saxton
<b>Schuylkill Haven</b>	Auburn (Verizon North), Friedensburg (Verizon North), Minersville, New Philadelphia, Orwigsburg, Pottsville, Saint Clair, Schuylkill Haven
<b>Schwenksville</b>	Center Point, Collegeville, Green Lane, Harleysville, Lansdale, Perkasio, Phila. Subn. Zone 30, Pottstown, Royersford, Sassamansville (The Conestoga Tel. and Tel. Co.), Schwenksville, Souderton
<b>Scottdale</b>	Connellsville, Dawson, Mount Pleasant, Scottdale
<b>Scranton</b>	Clarks Summit (Commonwealth Tel.), Dalton (Commonwealth Tel.), Factoryville (Commonwealth Tel.), Hamlin, Jermyn, Lake Ariel, Lake Winola (Commonwealth Tel.), Moosic, Moscow, Olyphant, Pittston, Scranton, Taylor, Wyoming
<b>Shamokin</b>	Elysburg, Kulpmont, Mount Carmel, Shamokin, Sunbury, Trevorton (TDS – Mahanoy and Mahantango Tel. Co.)
<b>Sharon</b>	Mercer, Sharon, O. (AMERITECH, O.), Sharon, PA, Sharpsville, Transfer (The Pymatuning Ind. Tel. Co.), West Middlesex
<b>Sharpsville</b>	Greenville, Mercer, Sharon, O. (AMERITECH, O.), Sharon, PA, Sharpsville, Transfer (The Pymatuning Ind. Tel. Co.), West Middlesex
<b>Shenandoah</b>	Ashland, Frackville, Girardsville, Mahanoy City, Ringtown (Commonwealth Tel.), Shenandoah
<b>Slatington</b>	Allentown, Bath, Bethlehem, Catasauqua, Ironton (Ironton Tel. Co.), New Tripoli (Verizon North), Northampton, Slatington
<b>Smethport</b>	Bradford, Eldred, Port Allegany, Rew, Smethport
<b>Smithfield</b>	Fairchance, Masontown, McClellandtown, Point Marion, Smithfield, Uniontown
<b>Smiths Ferry</b>	Chester, W. Va. (Verizon – W. Va.), East Liverpool, O. (AMERITECH, O.), Hookstown, Midland, Rochester, Smiths Ferry
<b>Smock</b>	Brownsville, Smock, Uniontown
<b>Snow Shoe</b>	Bellefonte, Frenchville, Snow Shoe

Issued: May 19, 2012

Effective: May 23, 2012

By:  
Bradford M. Bono  
Princeton Hosted Solutions, LLC  
700 Godwin Avenue, Suite 330,  
Midland Park, NJ 07432

## COMPETITIVE LOCAL EXCHANGE TELECOMMUNICATIONS SERVICES

<b>Souderton</b>	Center Point, Collegeville, Doylestown, Dublin, Green Lane, Harleysville, Lansdale, Line Lexington, North Wales, Pennsburg, Perkasio, Quakertown, Schwenksville, Souderton
<b>Springdale</b>	New Kensington, Pitb. Subn. Zone 19, Pitb. Subn. Zone 20, Springdale, Tarentum
<b>Spring Mills</b>	Bellefonte, Boalsburg, Centre Hall, Millheim, Spring Mills, State College
<b>Springtown</b>	Allentown, Bethlehem, Catasauqua, Easton, Ferndale (Commonwealth Tel.), Hellertown, Milford, NJ (Verizon – NJ), Quakertown, Riegelsville, Springtown, Upper Black Eddy
<b>State College</b>	Bellefonte, Boalsburg, Centre Hall, Port Matilda (Windstream), Spring Mills, State College
<b>Strasburg</b>	Gap (Commonwealth Tel.), Intercourse (Frontier Comm. Of PA), Lancaster, Landisville, Millersville, Quarryville (Commonwealth Tel.), Rawlinsville (Commonwealth Tel.), Strasburg
<b>Stroudsburg</b>	Bushkill, Cresco, Lords Valley, Mount Pocono, Saylorburg (Commonwealth Tel.), Stroudsburg, Stroudsburg, NJ (Verizon – NJ)
<b>Sugar Grove</b>	Russell, Sugar Grove, Warren, Youngsville
<b>Sunbury</b>	Danville, Elysburg, Milton, Northumberland, Selinsgrove (Verizon North), Shamokin, Sunbury
<b>Sykesville</b>	DuBois, Luthersburg (Windstream), Reynoldsville, Sykesville
<b>Tamaqua</b>	Lakewood (Frontier Comm. – Lakewood), Lansford (Windstream), Mahanoy City, McAdoo, New Philadelphia, Pottsville, Tamaqua
<b>Tarentum</b>	New Kensington, Pitb. Subn. Zone 20, Springdale, Tarentum
<b>Taylor</b>	Moosic, Olyphant, Pittston, Scranton, Taylor, Wyoming
<b>Tidioute</b>	Endeavor, Tidioute, Tionesta, Warren
<b>Tyrone</b>	Altoona, Bellwood, Tyrone, Warriors Mark (Windstream)
<b>Tionesta</b>	Endeavor, Tidioute, Tionesta

Issued: May 19, 2012

Effective: May 23, 2012

By:  
Bradford M. Bono  
Princeton Hosted Solutions, LLC  
700 Godwin Avenue, Suite 330,  
Midland Park, NJ 07432

## COMPETITIVE LOCAL EXCHANGE TELECOMMUNICATIONS SERVICES

<b>Ulysses</b>	Coudersport, Ulysses
<b>Uniontown</b>	Brownsville, Connellsville, Fairchance, Farmington, Masontown, McClellandtown, New Salem, Point Marion, Republic, Smithfield, Smock, Uniontown
<b>Unionville</b>	Avondale, Coatesville, Kemblesville, Kennett Square, Landenberg, Lenape, Mendenhall, Mortonville, Unionville, West Chester, West Grove, Westtown
<b>Upper Black Eddy</b>	Easton, Ferndale (Commonwealth Tel.), Frenchtown, NJ (Verizon – NJ), Milford, NJ (Verizon – NJ), Riegelsville, Springtown, Uhlerstown (Commonwealth Tel.), Upper Black Eddy
<b>Wallenpaupack</b>	Hamlin, Hawley, Honesdale, Lake Ariel, Lords Valley, Moscow, Newfoundland, Wallenpaupack
<b>Wampum</b>	Beaver Falls, Ellwood City, New Castle, Wampum
<b>Warren</b>	Russell, Sheffield (Windstream), Sugar Grove, Tidioute, Warren, Youngsville
<b>Washington</b>	Avella, Buffalo (Verizon North), Canonsburg, Claysville, Hickory (Hickory Tel. Co.), McMurray, Taylorstown (Verizon North), Washington, West Alexander
<b>Washingtonville</b>	Bloomsburg, Danville, Millville, Milton, Turbotville (Windstream), Washingtonville
<b>Weatherly</b>	Freeland, Hazleton, Jim Thorpe, McAdoo, Weatherly, White Haven
<b>West Alexander</b>	Claysville, Washington, West Alexander
<b>West Chester</b>	Downingtown, Exton, Lenape, Mendenhall, Mortonville, Phila. Subn. Zone 28, West Chester, Westtown
<b>West Grove</b>	Avondale, Coatesville, Kemblesville, Kennett Square, Landenberg, Lenape, Mendenhall, Mortonville, Oxford, Parkesburg, Unionville, West Chester, West Grove, Westtown, Hockessin, DE (Verizon – DE)
<b>West Middlesex</b>	Sharon, Sharon, O. (AMERITECH, O.), Sharpsville, West Middlesex
<b>West Newton</b>	Belle Vernon, West Newton, Yukon (Yukon-Waltz Tel. Co.)

Issued: May 19, 2012

Effective: May 23, 2012

By:  
Bradford M. Bono  
Princeton Hosted Solutions, LLC  
700 Godwin Avenue, Suite 330,  
Midland Park, NJ 07432

## COMPETITIVE LOCAL EXCHANGE TELECOMMUNICATIONS SERVICES

<b>Westtown</b>	Lenape, Phila. Subn. Zone 10, Mendenhall, West Chester, Westtown
<b>White Haven</b>	Freeland, Hazleton, Jim Thorpe, Weatherly, White Haven
<b>Wilkes-Barre</b>	Center Moreland (Commonwealth Tel.), Dallas (Commonwealth Tel.), Harveys Lake (Commonwealth Tel.), Kingston, Mountaintop, Nanticoke, Nuangola (Commonwealth Tel.), Pittston, Plymouth, Trucksville (Commonwealth Tel.), Wilkes-Barre, Wyoming
<b>Williamsport</b>	Jersey Shore, Loyalsock (Verizon North), Oval (Pennsylvania Tel. Co.), Trout Run (Verizon North), Williamsport
<b>Winburne</b>	Clearfield, Frenchville, Philipsburg, Winburne
<b>Woolrich</b>	Avis, Jersey Shore, Lock Haven, Woolrich
<b>Wycombe</b>	Buckingham, Doylestown, New Hope, Newtown, Phila. Subn. Zone 40, Phila. Subn. Zone 45, Wycombe
<b>Wyoming</b>	Kingston, Moosic, Pittston, Scranton, Taylor, Wilkes-Barre, Wyoming
<b>Yardley</b>	Ewing, NJ (Verizon – NJ), Morrisville, New Hope, Newtown, Phila. Subn. Zone 42, Phila. Subn. Zone 43, Phila. Subn. Zone 44, Trenton, NJ (Verizon – NJ), Wycombe, Yardley
<b>Youngsville</b>	Russell, Sugar Grove, Warren, Youngsville
<b>Youngwood</b>	Greensburg, Mount Pleasant, Youngwood
<b>Zelienople</b>	Beaver Falls, Criders Corners (North Pitt. Tel. Co.), Ellwood City, Evans City (CenturyLink), Zelienople
<b>Verizon North</b>	
<b>Airville</b>	Brogue, Delta, Red Lion
<b>Auburn</b>	Friedensburg, Orwigsburg, Pine Grove, Pottsville, Schuylkill Haven
<b>Avonmore</b>	Apollo (Windstream), Saltsburg, Vandergrift
<b>Beach Lake</b>	Galilee, Honesdale, Narrowsburg, NY (Citizens Tel.)
<b>Beaver Springs</b>	Middleburg, Mount Pleasant Mills, Selinsgrove

Issued: May 19, 2012

Effective: May 23, 2012

By:  
Bradford M. Bono  
Princeton Hosted Solutions, LLC  
700 Godwin Avenue, Suite 330,  
Midland Park, NJ 07432



## COMPETITIVE LOCAL EXCHANGE TELECOMMUNICATIONS SERVICES

<b>Beaverdale</b>	Johnstown, South Fork
<b>Berlin</b>	Meyersdale, Rockwood, Somerset, Stoystown
<b>Bernville</b>	Frystown, Hamburg, Robesonia, Womelsdorf, Reading
<b>Boswell</b>	Hooversville, Johnstown, Somerset, Stoystown
<b>Brogue</b>	Airville, Red Lion, York
<b>Brookside</b>	Jersey Shore, Trout Run, Williamsport
<b>Buffalo</b>	Avella, Canonsburg, Taylorstown, Washington
<b>Cambridge Springs</b>	Edinboro, Meadville, Saegertown (Windstream)
<b>Central City</b>	Berlin, Johnstown, Somerset, Windber
<b>Chapman Lake</b>	Carbondale, Clark Summit (Commonwealth Telephone Co.), Jermyn, Olyphant, Scranton
<b>Clintonville</b>	Franklin, Wesley
<b>Confluence</b>	Rockwood, Salisbury
<b>Cooperstown</b>	Franklin, Oil City
<b>Corry</b>	Spartansburg, Union City, Wattsburg
<b>Davidsville</b>	Johnstown
<b>Delta</b>	Airville, Fawn Grove, Cardiff, Md. (Verizon – Md.)
<b>Dillsburg</b>	Dover, Harrisburg Zone 1, Mechanicsburg
<b>Dingman's-Ferry</b>	Milford/Log Tavern, Montague, NJ (CenturyLink)
<b>East Berlin</b>	Dover, Hanover (CenturyLink), New Oxford (CenturyLink), York
<b>Edinboro</b>	Cambridge Springs, Erie, McKean
<b>Elkland</b>	Knoxville, Lawrenceville (Commonwealth Telephone Co.), Westfield

Issued: May 19, 2012

Effective: May 23, 2012

By:  
Bradford M. Bono  
Princeton Hosted Solutions, LLC  
700 Godwin Avenue, Suite 330,  
Midland Park, NJ 07432

## COMPETITIVE LOCAL EXCHANGE TELECOMMUNICATIONS SERVICES

<b>Emmaus</b>	Allentown, Bethlehem, Ironton (Ironton Telephone Co.)
<b>Erie</b>	Edinboro, Fairview, Girard, McKean, North East, Waterford, Wattsburg
<b>Fairview</b>	Erie, Girard, McKean
<b>Fawn Grove</b>	Delta, Stewartstown, Jarrettsville, Md. (Service to NXX 692 and 941 only), Cardiff, Md. (Verizon – Md.)
<b>Franklin</b>	Cooperstown, Oil City
<b>Friedensburg</b>	Auburn, Orwigsburg, Pine Grove, Pottsville, Schuylkill Haven
<b>Frystown</b>	Bernville, Jonestown, Myerstown, Lebanon
<b>Galilee</b>	Beach Lake, Callicoon (Verizon – NY), Honesdale, Narrowsburg, NY (Citizens Tel.)
<b>Girard</b>	Erie, Fairview
<b>Glen Rock</b>	Jefferson, Loganville, Stewartstown, York
<b>Grand Valley</b>	Pleasantville, Titusville, Youngsville
<b>Harrison Valley</b>	Ulysses, Westfield
<b>Hershey</b>	Annville, Elizabethtown (CenturyLink), Harrisburg Zone 1 and 2, Hummelstown, Lebanon, Middletown, Palmyra, Shellsville, Steelton
<b>Hooversville</b>	Boswell, Johnstown, Stoystown, Somerset
<b>Jefferson</b>	Glen Rock, Hanover (CenturyLink), Spring Grove, York
<b>Johnstown</b>	Beaverdale, Davidsville, Nanty Glo, Seward, South Fork, Windber
<b>Jonestown</b>	Frystown, Shellsville, Annville, Lebanon
<b>Kempton</b>	Allentown, Hamburg, Kutztown, New Smithville, New Tripoli
<b>Knoxville</b>	Elkland
<b>Lincolnton</b>	Union City, Spartansburg, Townville (Windstream)

Issued: May 19, 2012

Effective: May 23, 2012

By:  
Bradford M. Bono  
Princeton Hosted Solutions, LLC  
700 Godwin Avenue, Suite 330,  
Midland Park, NJ 07432

## COMPETITIVE LOCAL EXCHANGE TELECOMMUNICATIONS SERVICES

<b>Loganville</b>	Glen Rock, Red Lion, York
<b>Loyalsock</b>	Muncy, Trout Run, Williamsport
<b>Manchester</b>	Dover, York
<b>Mantzville</b>	Lehighton, McKeansburg, Tamaqua
<b>Matamoras</b>	Cuddebackville, NY (Verizon – NY), Milford/Log Tavern, Montague, NJ (CenturyLink), Port Jervis, NY (Verizon – NY)
<b>McKean</b>	Edinboro, Erie, Fairview
<b>McKeansburg</b>	Mantzville, Orwigsburg, Pottsville, Schuylkill Haven
<b>Meyersdale</b>	Berlin, Rockwood, Salisbury, Somerset
<b>Middleburg</b>	Beaver Springs, Mifflinburg (Buffalo Valley Tel. Co.), Mount Pleasant Mills, Selinsgrove
<b>Milford/Log Tavern</b>	Cuddebackville, NY (Verizon – NY), Dingman's Ferry, Matamoras, Montague, NJ (CenturyLink), Port Jervis, NY (Verizon – NY)
<b>Mount Pleasant Mills</b>	Beaver Springs, Middleburg, Selinsgrove
<b>Myerstown</b>	Frystown, Schaefferstown, Womelsdorf, Lebanon
<b>Nanty Glo</b>	Ebensburg, Johnstown
<b>New Bedford</b>	New Castle, New Wilmington
<b>New Smithville</b>	Allentown, Ironton (Ironton Telephone Co.), Kempton, New Tripoli
<b>New Tripoli</b>	Allentown, Kempton, New Smithville, Slatington
<b>New Wilmington</b>	New Bedford, New Castle, Sharon, Volant (CenturyLink)
<b>North East</b>	Erie, South Ripley, NY (Verizon – NY), Wattsburg
<b>Oil City</b>	Cooperstown, Franklin, Pleasantville, Titusville
<b>Pine Grove</b>	Auburn, Friedensburg, Tremont (Commonwealth Telephone Co.)

Issued: May 19, 2012

Effective: May 23, 2012

By:  
Bradford M. Bono  
Princeton Hosted Solutions, LLC  
700 Godwin Avenue, Suite 330,  
Midland Park, NJ 07432

## COMPETITIVE LOCAL EXCHANGE TELECOMMUNICATIONS SERVICES

<b>Pleasantville</b>	Grand Valley, Oil City, Titusville
<b>Princeton</b>	New Castle, Portersville (CenturyLink), Ellwood City
<b>Red Lion</b>	Brogue, Loganville, York
<b>Robesonia</b>	Bernville, Womelsdorf, Reading
<b>Rockwood</b>	Berlin, Confluence, Meyersdale, Somerset
<b>Sabinsville</b>	Westfield
<b>Salisbury</b>	Confluence, Meyersdale, Grantsville, Md. (Verizon – Md.)
<b>Saltsburg</b>	Avonmore
<b>Sayre</b>	Waverly, NY (Verizon – NY)
<b>Schaefferstown</b>	Myerstown, Womelsdorf, Lebanon
<b>Selinsgrove</b>	Beaver Springs, Middleburg, Mount Pleasant Mills, Sunbury
<b>Selinsgrove – Shamokin Dam</b>	Beaver Springs, Middleburg, Mount Pleasant Mills, Sunbury
<b>Seward</b>	Johnstown, New Florence
<b>Shellsville</b>	Jonestown, Harrisburg Zone 1, Hummelstown, Hershey
<b>Shohola</b>	Barryville, NY (Verizon – NY), Milford/Log Tavern
<b>Somerset</b>	Berlin, Boswell, Rockwood, Stoystown
<b>South Fork</b>	Beaverdale, Johnstown
<b>Spartansburg</b>	Corry, Lincolnville, Titusville, Townville (Windstream)
<b>Spring Grove</b>	Hanover (CenturyLink), Jefferson, York
<b>Stewartstown</b>	Fawn Grove, Glen Rock, Red Lion, York, Jarrettsville, Md. (Service to NXX 941 only)
<b>Stoystown</b>	Berlin, Boswell, Hooversville, Somerset

Issued: May 19, 2012

Effective: May 23, 2012

By:  
Bradford M. Bono  
Princeton Hosted Solutions, LLC  
700 Godwin Avenue, Suite 330,  
Midland Park, NJ 07432

## COMPETITIVE LOCAL EXCHANGE TELECOMMUNICATIONS SERVICES

<b>Taylorstown</b>	Buffalo, Claysville, Washington
<b>Titusville</b>	Grand Valley, Oil City, Pleasantville, Spartansburg
<b>Trout Run</b>	Brookside, Loyalsock, Williamsport
<b>Union City</b>	Corry, Erie, Lincolnville, Waterford, Wattsburg
<b>Vandergrift</b>	Apollo (Windstream), Avonmore, Leechburg (Windstream)
<b>Waterford</b>	Erie, Union City, Wattsburg
<b>Wattsburg</b>	Corry, Erie, North East, Union City, Waterford
<b>Wellersburg</b>	Mt. Savage, Md., Cumberland, Md., Frostburg, Md. (Verizon – Md.), Meyersdale, Hyndman (CenturyLink)
<b>Wesley</b>	Clintonville, Harrisville (CenturyLink), Grove City, Mercer
<b>Westfield</b>	Elkland, Harrison Valley, Knoxville, Sabinsville
<b>Windber</b>	Central City, Johnstown
<b>Womelsdorf</b>	Bernville, Myerstown, Robesonia, Schaefferstown, Reading
<b>Wrightsville</b>	Red Lion, York, Columbia (CenturyLink)
<b>York</b>	Dover, Loganville, Manchester, Red Lion, Spring Grove, Wrightsville

Issued: May 19, 2012

Effective: May 23, 2012

By:  
Bradford M. Bono  
Princeton Hosted Solutions, LLC  
700 Godwin Avenue, Suite 330,  
Midland Park, NJ 07432

COMPETITIVE LOCAL EXCHANGE TELECOMMUNICATIONS SERVICES

---

**SECTION 4 - DESCRIPTION OF SERVICES****4.1 SERVICES**

The Carrier's Local Telephone Service enables the Customer to:

- Place or receive calls to any calling Station in the local calling area, as defined herein;
- Access basic 911 Emergency Service if available in the Customer's area;
- Where available, place or receive calls to 800 telephone numbers.

The Carrier's service can not be used to originate calls to other telephone companies' caller-paid information services (e.g., 900, 976).

**4.1.1 Local Exchange Service**

Local Exchange Service is a switched, intrastate, telecommunications service which permits customers to establish communications between two locations within the Customers' local calling area. Local Exchange Service allows customers to place calls within the local calling area, to access "911" and/or "E 911" service, if available, in the Customer's local calling area and to place calls to toll-free "800" or "888" numbers. Service will be charged on a monthly basis and a Customer will have unlimited use of the aforementioned service for that month. For an additional charge, Customers may also purchase custom services such as call waiting, call forwarding, three-way calling, speed dial caller ID, and non-published number service.

Local Exchange Service does not include any long distance service or other toll services. The following types of calls and services will be blocked by the Carrier: long distance (e.g. "1+#" or "0+#" calls); collect calls; operator-assisted calls; third number billed calls; directory assistance; or any service that may be billed to Customer's telephone number (e.g. "900" and "976" calls).

**4.1.2 Toll Service**

The Company's Basic Local Service neither includes direct-dialing distance calling nor any other toll services. Customer who desire intraLATA and interLATA toll service have the following options:

- A. Purchase Services from the Company's Interexchange Tariff
- B. Contracting directly with a long distance service provider;
- C. Using prepaid calling cards; or
- D. Using post-paid calling cards.

The Company will provide, at no additional charge, via Customer Service, information and counseling to its customers on how to obtain long distance service.

COMPETITIVE LOCAL EXCHANGE TELECOMMUNICATIONS SERVICES

---

**SECTION 4 – DESCRIPTION OF SERVICES (Continued)**4.1 **SERVICES (Continued)**

## 4.1.3 Optional Services

## A. Call Forwarding

Allows calls to automatically ring to another phone number.

## B. Call Waiting

Allows the Customer to be notified of an incoming call while the Customer is having a conversation with another party.

## C. Caller ID

Caller ID is an optional feature which allows the subscriber to see the telephone number of an incoming call displayed on the customer provided display unit. The telephone number of an incoming call will display between the first and second rings. Caller ID service works only on calls which originate and terminate in central offices which are equipped and have SS7 connectivity. Caller ID is available to customers by monthly subscription only, which provides unlimited use of this service. The Caller ID box is not included in the rate for the monthly service fee.

The telephone numbers that will be displayed on a Caller ID subscriber's display unit include listed, non-listed and non-published telephone numbers.

Telephone number that will not be displayed to the Caller ID subscriber are: (1) calls from customers who use Per-Call Blocking or Per-Line Blocking; (2) calls from customers located in central offices not a part of the SS7 Signaling System; and (3) calls placed through an operator. When these types of calls are received by a Caller ID subscriber, their display unit will notify them that the calling telephone number is unavailable.

## D. Non-Published Number

Allows the Customer to keep his local phone number out of the phone book or directory assistance.

## E. Speed Dial

The Subscriber may call pre-selected, pre-programmed telephone numbers by dialing a one or two-digit code.

COMPETITIVE LOCAL EXCHANGE TELECOMMUNICATIONS SERVICES

---

**SECTION 4 – DESCRIPTION OF SERVICES (Continued)**4.1 **SERVICES (Continued)**

## 4.1.3 Optional Services (continued)

## F. “Three-Way” Calling

Allows the Customer to add a third party to a conversation.

4.2 **DIRECTORY LISTINGS**

Carrier shall provide for a single directory listing, termed the primary listing, in the telephone directory published by the dominant exchange service provider in Customer’s exchange area of the Station number which is designated as Customer’s main billing number.

4.2.1 Carrier reserves the right to limit the length of any listing in the directory by the use of abbreviations when, in its judgment, the clearness of the listing or the identification of Customer is not impaired thereby. Where more than one line is required to properly list Customer, no additional charge is made.

4.2.2 Carrier may refuse a listing which is known not to constitute a legally authorized or adopted name, obscenities in the name, or any listing which, in the opinion of Carrier, is likely to mislead or deceive calling persons as to the identity of the listed party, or is a contrived name used for advertising purposes or to secure a preferential position in the directory or is more elaborate than is reasonably necessary to identify the listed party. Carrier, upon notification to Customer, will withdraw any listing which is found to be in violation of its rules with respect thereto.

4.2.3 In order for listings to appear in an upcoming directory, Customer must furnish the listing to Carrier in time to meet the directory publishing schedule.

4.2.4 Directory listings are provided in connection with each Customer service as specified herein.

4.3 **DIRECTORY ASSISTANCE**

A Customer may obtain Directory Assistance in determining telephone numbers within its local calling area by calling the Directory Assistance operator.

A Customer may request a maximum of two (2) telephone numbers per call to Directory Assistance service without additional charges. Company does not provide residential services.

A credit will be given for calls to Directory Assistance when the Customer experiences poor transmission or is cut-off during the call, or when the Customer is given an incorrect telephone number. To obtain such a credit, the Customer must notify Carrier’s Customer Service representative.



COMPETITIVE LOCAL EXCHANGE TELECOMMUNICATIONS SERVICES

---

**SECTION 4 – DESCRIPTION OF SERVICES (Continued)****4.4 MISCELLANEOUS SERVICES****4.4.1 Service Reconnection**

Allows for restoral of service after disconnection or for initiation of service subsequent to a customer location move.

**4.4.2 Optional Feature Addition**

Allows the customer to add an optional feature or features subsequent to initiation of basic service.

**4.4.3 Promise to Pay**

*Allows a qualified Customer to obtain an extension of that Customer's billing due date for a period not to exceed 10 days. A qualified customer is one who has made at least one prior payment to the Company and has an outstanding balance of \$5.00 or less on his or her account.*

**4.4.4 Service Transfer**

Allows for the initiation of service subsequent to a customer location move.

**4.4.5 Preferred Interexchange Carrier Charge**

Monthly Fee associated with a customer's selection of Interexchange Carrier.

**4.5 CALLER ID BLOCKING**

A calling party may block the passage of his/her telephone number, associated main listed name and voiceback of calling identification information to users or subscribers to Optional Central Office Services which utilized Signaling System 7 (SS7) technology. Blocking will also prevent call completion through the use of Return Call Service.

Customers have two blocking options as follows:

**4.5.1 Per-Call Blocking**

Per-Call Blocking will prevent the display of Customers' telephone numbers on outgoing calls. This feature may be utilized at any time through the activation of a special code prior to dialing an outgoing call. Per-Call Blocking is provided at no charge, and is automatically placed on all telephone lines by the Company.

Per-Call Blocking will not prevent the display of telephone numbers to 911 emergency service providers.

---

**COMPETITIVE LOCAL EXCHANGE TELECOMMUNICATIONS SERVICES**

---

**SECTION 4 – DESCRIPTION OF SERVICES (Continued)****4.5 CALLER ID BLOCKING (Continued)****4.5.2 Per-Line Blocking**

Customers requesting Per-Line Blocking will prevent the display of their telephone numbers on all outgoing calls. The Per-Line Blocking feature may be deactivated at any time by Customers on a call-by-call basis through the activation of a special code. Blocking will be deactivated for that outgoing call only. Per-Line Blocking is provided free of any recurring charge, but is a special feature which must be ordered by Customers.

The Company will initially install Per-Line Blocking at no charge. Requests to remove Per-Line Blocking on Customer lines will be completed at no charge. Subsequent requests to re-install Per-Line Blocking will be completed at prevailing Company non-recurring service order rates.

Per-Line Blocking will not prevent the display of originating telephone numbers to 911 emergency service providers.

*Customers who use either per-call blocking or line blocking may be unable to complete calls to Caller ID Number/Caller ID Name subscribers who have activated the Anonymous Call Rejection feature of Caller ID Number/Caller ID Name Service. If a customer using blocking calls a Caller ID Number/Caller ID Name subscriber who has activated Anonymous Call Rejection, he/she will hear an announcement that the Caller ID Number/Caller ID Name subscriber is not accepting blocked calls. There are several ways to complete a call to a Caller ID Number/Caller ID Name subscriber who has activated Anonymous Call Rejection: (1) place the call through an operator; (2) place the call using a calling card; or (3) place the call without blocking. Options (1) and (2) involve charges in addition to the cost of the call.*

**4.6 SPECIAL PRICING ARRANGEMENTS - INDIVIDUAL CASE BASIS (ICB)**

In lieu of the rates otherwise set forth in this Tariff, rates and charges, including installation, special construction, and recurring charges, may be established at negotiated rates on an Individual Case Basis (ICB), taking into account such factors as the nature of the facilities and services, the costs of construction and operation, the volume of traffic commitment, and the length of service commitment by the Customer, as long as the rates and charges are not less than Carrier's costs of providing the service. Such arrangements shall be considered Special Pricing Arrangements, the terms of which will be set forth in individual contracts or Customer Term Agreements. Specialized Pricing Arrangement rates or charges will be made available to similarly-situated Customers on comparable terms and conditions.

COMPETITIVE LOCAL EXCHANGE TELECOMMUNICATIONS SERVICES

---

**SECTION 4 – DESCRIPTION OF SERVICES (Continued)**4.7 **PROMOTIONS**

Carrier may, from time to time, engage in national and/or intrastate promotional offerings or trials, designed to attract new Customers, to stimulate Customer usage, to test potential new services, and/or to increase existing Customer awareness of Carrier services. These offerings may be limited to certain services, dates, times of day and/or locations determined by Carrier. Carrier is aware that it is obligated to provide a tariff supplement when engaging in Promotions.

By:  
Bradford M. Bono  
Princeton Hosted Solutions, LLC  
700 Godwin Avenue, Suite 330,  
Midland Park, NJ 07432

## COMPETITIVE LOCAL EXCHANGE TELECOMMUNICATIONS SERVICES

**SECTION 5 - RATES AND CHARGES****5.1 LOCAL EXCHANGE SERVICE RATES AND CHARGES**

Local Exchange Service Customer will be charged applicable Non-Recurring Charges and monthly Recurring Charges as specified below:

**5.1.1 One-Time Activation Fee**

One-Time Activation Fee	\$250.00
-------------------------	----------

**5.1.2 Recurring Charges**

Monthly Service Charge	\$15.30
------------------------	---------

**5.2 OPTIONAL FEATURES RATES**

	<u>Monthly</u>	<u>One-Time Activation Fee</u>
Call Forwarding	\$2.15	\$10.00
Call Waiting	\$6.12	\$10.00
Non-Published Number	\$3.75	\$10.00
Speed Dial	\$2.15	\$10.00
Three-Way Calling	\$2.39	\$10.00
Caller ID	\$5.60	\$10.00

Customers may activate multiple optional features at the same time and pay only one Activation Fee.

**5.3 DIRECTORY LISTINGS RATES AND CHARGES****5.3.1 Non-Recurring Charges**

Primary Listing (one number):	N/C
-------------------------------	-----

**5.3.2 Monthly Recurring Charges**

Primary Listing (one number)	\$3.75
------------------------------	--------

**5.4 DIRECTORY ASSISTANCE****5.4.1 Each call to Directory Assistance will be charged as follows:**

\$1.25 per call

**5.4.2 The customer may request a maximum of two (2) telephone numbers per call to Directory Assistance service without additional charges.**

Issued: May 19, 2012

Effective: May 23, 2012

By:  
Bradford M. Bono  
Princeton Hosted Solutions, LLC  
700 Godwin Avenue, Suite 330,  
Midland Park, NJ 07432

COMPETITIVE LOCAL EXCHANGE TELECOMMUNICATIONS SERVICES

---

**SECTION 5 – RATES AND CHARGES (Continued)**

5.5 **MISCELLANEOUS RATES AND CHARGES**

5.5.1	Service Reconnection Fee:	\$20.00
5.5.2	Promise to Pay Fee:	\$5.00
5.5.3	Transfer Fee:	\$5.00

COMPETITIVE LOCAL EXCHANGE TELECOMMUNICATIONS SERVICES

**SECTION 6 – SPECIAL SERVICES AND PROGRAMS (Continued)**

**6.1 PENNSYLVANIA TELECOMMUNICATIONS RELAY SERVICE**

**6.1.1 Description**

The Pennsylvania Telecommunications Relay Service (TRS) is a relay telecommunications service for the deaf, hearing and/or speech disabled population of the Commonwealth. The service permits telephone communications between individuals with hearing and/or speech disabilities who must use a text telephone and individuals with normal hearing and speech as provided in the tariff filed by AT&T Communications of Pennsylvania, Inc.

**6.1.2 Surcharge**

In addition to the charges provided in this Tariff and applicable intrastate toll tariffs, a surcharge will apply to business access lines served by this Carrier. This surcharge applies regardless of whether or not the access line uses the Pennsylvania Telecommunications Relay Service.

This surcharge serves as the funding vehicle for the operation of the Pennsylvania Telecommunications Relay Service, and shall be calculated by the Pennsylvania Public Utility Commission (the Commission). The Commission shall compute the Pennsylvania Relay Service Surcharge each year and notify local exchange carriers of the surcharge amount to be applied for the twelve-month period commencing with July 1 of each year.

The Commission may revise the surcharge more frequently than annually at its discretion.

Tariff revisions will be filed whenever the Commission calculates a new surcharge amount and notifies Carrier.

MRC

Per business access line	\$0.08
--------------------------	--------

Centrex lines will be charged on an equivalency basis as determined by the Commission.

By:  
Bradford M. Bono  
Princeton Hosted Solutions, LLC  
700 Godwin Avenue, Suite 330,  
Midland Park, NJ 07432

COMPETITIVE LOCAL EXCHANGE TELECOMMUNICATIONS SERVICES

---

**SECTION 6 – SPECIAL SERVICES AND PROGRAMS (Continued)**

6.1 **PENNSYLVANIA TELECOMMUNICATIONS RELAY SERVICE (Continued)**

6.1.3 Rates and Charges

Local calls will be charged at the applicable rates as set forth in this Tariff, except for calls originating from Pay Telephones, which shall be completed free of charge. All intraLATA toll calls placed through the Pennsylvania Telecommunications Relay Service will be rated according to the Rates Applicable on Messages Placed by Certified Speech and/or Hearing Disabled rates in the Pennsylvania Telephone Association Toll Tariff PA P.U.C. No. 10. The Company concurs in this tariff for the limited purpose described herein.

The Company will make available to the Telecommunications Relay Service (“TRS”) user, upon request, a prepaid debit card. The rates for use of this card will not exceed those that would apply to identical calls for non-TRS users of coin-sent-paid service.

Please refer to the appropriate Interexchange Carrier tariff for interstate charges. The interstate tariffs should be publicly available on the websites maintained by interstate interexchange carriers.

COMPETITIVE LOCAL EXCHANGE TELECOMMUNICATIONS SERVICES

---

**SECTION 6 – SPECIAL SERVICES AND PROGRAMS (Continued)**

**6.2 EMERGENCY SERVICES (ENHANCED 911)**

Allows Customers to reach appropriate emergency services including police, fire and medical services. Enhanced 911 has the ability to selectively route an emergency call to the primary E911 provider so that it reaches the correct emergency service located closest to the caller. In addition, Customer's address and telephone information will be provided to the primary E911 provider for display at the Public Service Answering Point (PSAP).

**6.2.1 Glossary Of Terms**

Host Telephone Company: The service provider, which is also the telecommunications public utility that provides 9-1-1 service to the county/municipality, and that houses the Automatic Location Identification (ALI)/MSAG data used for providing 9-1-1 service.

Telephone Company: A telecommunications public utility regulated by the Pennsylvania Public Utility Commission which has or requests access to the county/municipality 9-1-1 system or connection to the exchange carriers. This term is synonymous with 'service provider'.

Content: The data elements of the MSAG including (but not necessarily limited to) the data elements that are entered into the following fields A-I of a standard MSAG record:

- Tax area record
- Locality
- Street
- Thoroughfare
- Directional [where required]
- Even (E), odd (O), or all (A) [applied to house numbers]
- Low-high range of house numbers
- PSAP (Public Safety Answering Point)
- LAT/LONG (Latitude/Longitude) [where required]

Formatting Format: Shall include changes to the identity of fields, order of fields, and number and arrangement of data elements in each field, and a telephone company's rearrangement or regrouping of such data, without changing the MSAG content, for purposes of validating against MSAG records.



COMPETITIVE LOCAL EXCHANGE TELECOMMUNICATIONS SERVICES

---

## 6.2.2 Regulations

- A. The Telephone Company will comply with the Protocols as set forth in, and in the form of, Service Provider E-9-1-1 Protocols, Service Provider E-9-1-1 Questionnaire and Testing Procedures in accordance with the Petition of Verizon-Pennsylvania, Inc. for a Declaratory Order (MSAG); Docket No. P-00971203; Settlement Agreement of all Parties and Joint Petition entered August 7, 1998.
- B. The Telephone Company is indemnified under the Public Safety Emergency Telephone Act, Act 78 of 1990.
- C. The Telephone Company's liability and insurance provisions are fully stated in Pa. P.U.C. No.1, Section 1, General Regulations
- D. Cases of Service interruptions affecting public health and safety shall receive priority attention under any and all conditions, particularly in time of disaster. Every appropriate resource will be utilized. The service provider will make reasonable best efforts to have its system fully functional as soon as possible, unless conditions beyond the service provider's control prevent service restoration.
- E. The service provider will not use the county's/municipality's MSAG for any purpose that is not directly related to and required for the provision of 9-1-1 service.
- F. The Host Telephone Company will install the county's/municipality's MSAG in 'read/write' format and will not modify the content of the MSAG unless requested or permitted to do so by the county/municipality. A request to modify content by the Host Telephone Company shall be responded to by the county/municipality within ten (10) business days or the request is deemed to be approved. The request shall be in writing and shall set forth in reasonable detail the proposed modification and all reasons in support. The request shall be granted provided the modification is necessary for the Host Telephone Company's provision, maintenance, or upgrading of the 9-1-1 service.
- G. The Telephone Company shall not otherwise modify the content of the MSAG, but may make formatting changes approved by the county/municipality necessary to enable the MSAG to conform to the telephone company's information system(s). The request shall be in writing and shall set forth in reasonable detail the formatting changes and all reasons in support. The county/municipality shall respond to the request in ten (10) business days or the request is deemed to be approved. The request shall be granted provided the formatting change does not impair the integrity and accuracy of the MSAG database. For the purposes of this regulation, a content or formatting change does not include the use of the MSAG content in telephone companies' operational support systems to validate customer information for input to the ALI database.
- H. The service provider will not sell, lease, rent, loan or provide, or transfer the county's/municipality's MSAG to any other person(s) or entity(ies) without the express written authorization of the county's/municipality's 9-1-1 coordinator, or his or her designee.

---

**COMPETITIVE LOCAL EXCHANGE TELECOMMUNICATIONS SERVICES**

---

**SECTION 6 – SPECIAL SERVICES AND PROGRAMS (Continued)****6.2 EMERGENCY SERVICES (ENHANCED 911) (Continued)****6.2.2 Regulations (Continued)**

- I. The Telephone Company will not, without the written consent of the county/municipality, modify or create any derivative of the county's/municipality's MSAG, excepts as follows: one (1) mirror image copy of the MSAG may be made in electronic form for archival purposes (the copy may be made in read/write format by the host telephone company, but shall be made solely in read-only format by all other telephone companies), and the telephone company may make a mirror image copy, solely in read-only format and only for databases reconciliation, address verification for new connections of service, and other functions that are necessary to ensure that the name and address information provided by the service provider to the county/municipality is accurate and conforms to the county's/municipality's MSAG format.

6.2.3 911 information consisting of the names, addresses and telephone numbers of all telephone customers is confidential. The Company will release such information only after a 911 call has been received, on a call by call basis, only for the purpose of responding to an emergency call in progress.

6.2.4 The 911 calling party, by dialing 911, waives the privacy afforded by non-listed and non-published service to the extent that the telephone number, name, and address associated with the originating station location are furnished to the Public Safety Answering Point.

6.2.5 After the establishment of service, it is the Public Safety Agency's responsibility to continue to verify the accuracy of and to advise the Company of any changes as they occur in street names, establishment of new streets, changes in address numbers used on existing streets, closing and abandonment of streets, changes in police, fire, ambulance or other appropriate agencies' jurisdiction over any address, annexations and other changes in municipal and county boundaries, incorporation of new cities or any other similar matter than may affect the routing of 911 calls to the proper Public Safety Answering Point.

COMPETITIVE LOCAL EXCHANGE TELECOMMUNICATIONS SERVICES

---

**SECTION 6 – SPECIAL SERVICES AND PROGRAMS (Continued)**

**6.2 EMERGENCY SERVICES (ENHANCED 911) (Continued)**

**6.2.6 Liability and Indemnification (Applicable to Both Basic and Enhanced Service, as Appropriate)**

- J. This offering is limited to the provision and use of the digits “9-1-1” as the Universal Emergency Telephone Number (Code).
- K. 9-1-1 Service is one-way service only.
- L. The Company shall not incur any liability, direct or indirect, to any person who dials, or attempts to dial “9-1-1,” or to any other person who may be affected by the dialing of the digits “9-1-1.” The Company’s entire liability arising out of the provisions of 9-1-1 Service under this tariff shall be limited as set forth in this Section and in the Rules.

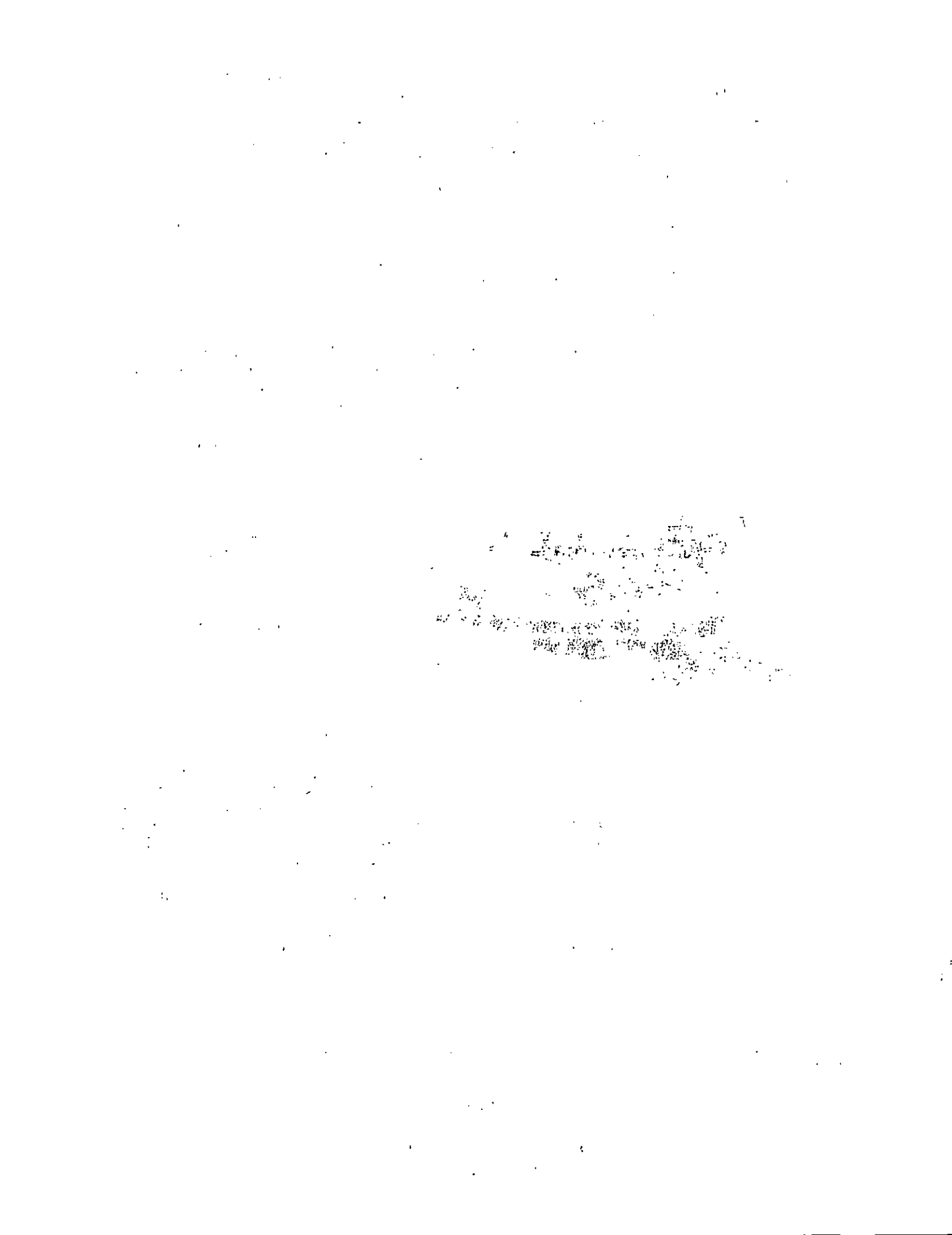
Company does not undertake to answer and forward 9-1-1 calls to responding agencies but furnishes the use of its facilities to enable the Customer to access the PSAP for their region and enables emergency personnel to respond to such calls on the Customer’s premises.

9-1-1 Service is provided solely for the benefit of the customer. The provision of 9-1-1 Service by Company shall not be interpreted, construed or regarded as being for the benefit of, or creating any Company obligation toward, any third person or legal entity other than the Customer.

Each Customer agrees to release, indemnify, defend, and hold harmless Company from any and all loss, claims, demands, suits, or any liability whatsoever, whether suffered, made, instituted, or asserted by the Customer or by any other party or person, for any loss, damage, or destruction of any property or personal injury, whether owned by the Customer or others.

The Customer also agrees to release, indemnify, and hold harmless Company for any infringement or invasion of the right of privacy of any person or persons, caused or claims to have been caused, directly or indirectly, by the installation, operation, failure to operate, maintenance, removal, presence, condition, occasion, or use of the 9-1-1 Service and the equipment associated therewith, including but not limited to, the identification of the telephone number used by the party or parties accessing 9-1-1 Service hereunder, and which arise out of the negligence or other wrongful act of Company, the Customer, its user, agencies or municipalities, or the employees agents of any one of them.

By calling 9-1-1 Service, the 9-1-1 calling party gives Company consent to provide 9-1-1 information, consisting of the name, address, and telephone number of the Customer at the location from which the call was made, to law enforcement agencies and other emergency service providers on a call-by-call basis to enable those agencies and service providers to respond to emergency calls for assistance.



**Certificate of Service**

I, Brian McDermott, Counsel for Applicant, hereby attest that I have served one copy of the Tariff on the following via 1<sup>st</sup> Class Mail:

**Office of Consumer Advocate**  
555 Walnut Street  
5th Floor, Forum Place  
Harrisburg, PA 17101-1923

**Office of Attorney General**  
Office of Consumer Protection  
Strawberry Square  
Harrisburg, PA 17120

**Office of Small Business Advocate**  
Commerce Building, Suite 1102  
300 North Second Street  
Harrisburg, PA 17101

**Verizon Pennsylvania Inc.**  
**Verizon North LLC**  
Stephanie Ulrich  
Strawberry Square, 12th Floor  
Harrisburg, PA 17101



---

Brian McDermott  
Strategies Law Group, PLLC

**RECEIVED**

MAY 17 2012

PA PUBLIC UTILITY COMMISSION  
SECRETARY'S BUREAU

Do not use

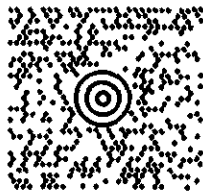
STRATEGIES LAW GROUP, PLLC  
(571) 730-4970  
THE UPS STORE #0117  
STE 119  
451 HUNGERFORD DRIVE  
ROCKVILLE MD 20850

3.3 LBS PAK 1 OF 1  
SHP WT: 4 LBS  
DATE: 17 MAY 2012

SHIP SECRETARY ROSEMARY CHIAVETTA  
TO: PA. PUBLIC UTILITY COMMISSION  
COMMONWEALTH KEYSTONE BLDG  
400 NORTH ST

HARRISBURG PA 17120-0225

HARRISBURG PA 17120 - 1002  
PUBLIC UTILITY COMMISSION  
400 NORTH ST



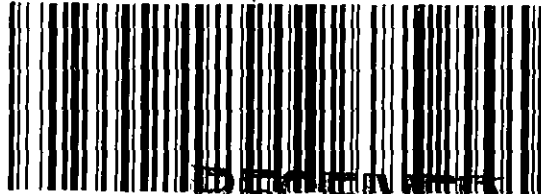
PA 171 9-20



UPS NEXT DAY AIR

1

TRACKING #: 1Z R03 8R3 01 6404 9120



RECEIVED

BILLING: P/P

MAY 17 2012

PA PUBLIC UTILITY COMMISSION  
SECRETARY'S BUREAU

ISH 13.00N E2844 27.5V 04/2012