



CenturyLink™

RECEIVED

2012 JUN -8 AM 10:16

PA P.U.C.
SECRETARY'S BUREAU
June 6, 2012

PA PUBLIC UTILITY COMMISSION

JUN 07 2012

BUREAU OF TRANSPORTATION & SAFETY
RAIL SAFETY DIVISION

Ms. Holly Swartz
Commonwealth of Pennsylvania
Public Utility Commission
Bureau of Technical Utility Service
Transportation Division
PO Box 3265
Harrisburg, Pa. 17105-3265

Re: Proposed Placement of Facilities Within
Buffalo & Pittsburgh RR R/W – Butler County, Pa.

Dear Ms. Swartz:

Enclosed for your review is an application for the placement of facilities within the railroad right-of-way owned by Buffalo & Pittsburg in Butler County, Pennsylvania. Along with the application are the plan drawings for the proposed facility placement along with a Certificate of Service.

Please review this application and provide authorization to proceed with this work.

If you have any questions, please contact me at 717-245-6730 or via e-mail at stan.g.urich@centurylink.com.

Thank you.

Sincerely,

Stanley G. Urich
Transaction Supervisor
Network Real Estate

18 S. 3rd St.
Newport, Pa. 17074-1408
Tel: 717-245-6730
Fax: 717-240-1684
www.centurylink.com

BEFORE
PENNSYLVANIA PUBLIC UTILITY COMMISSION

RECEIVED
2012 JUN -8 AM 10:16
PA P.U.C. BUREAU
SECRETARY'S BUREAU

In re: Application of **The United Telephone Company of Pennsylvania, LLC d/b/a CenturyLink** for approval of the alteration of the facilities by the replacement of existing poles, placement of new conduit, cable and anchors within the Buffalo & Pittsburg Railroad Right-of-Way near the intersection of Keck Rd in Summit Township, Butler County.

Application
Docket No.

PA PUBLIC UTILITY COMMISSION

JUN 07 2012

BUREAU OF TRANSPORTATION & SAFETY
RAIL SAFETY DIVISION

To Pennsylvania Public Utility Commission:

1. The name and address of applicant are **The United Telephone Company of Pennsylvania, LLC d/b/a CenturyLink**

.....
2. The name and address of applicant's attorney are.
Sue Benedek, 240 N. 3rd St., Suite 300, Harrisburg, Pa. 17101

3. **The United Telephone Company of Pennsylvania, LLC d/b/a CenturyLink** proposes the replacement of an existing pole, placement of new conduit, cable and anchors in the railroad right-of-way of Buffalo & Pittsburg Railroad in Summit Township, Blair County, Pennsylvania. These facilities are required to provide service to The United Telephone Company of Pennsylvania, LLC d/b/a CenturyLink's new switching equipment.

4. **The United Telephone Company of Pennsylvania, LLC d/b/a CenturyLink** proposes replacing one (1) existing pole, placing new conduit, cable and anchors within Buffalo & Pittsburgh's right-of-way.

5. Notice (Certificate of Service) has been submitted to Butler County c/o Bd of County Commissioners; Summit Township; Buffalo & Pittsburgh Railroad, RelTek, LLC, Pa. Dept. of Transportation, Pa Dept of Transportation Bureau of Design, and Pa Dept of Transportation, Office of /Chief Counsel..

6. Cost to install facilities at this crossing location is approximately \$4,000. Agents of **The United Telephone Company of Pennsylvania, LLC d/b/a CenturyLink** will be responsible for installing, maintaining and inspecting the facilities as well as being the source of funding

7. The alteration is necessary or proper for the following reasons: **These facilities are required to provide service to The United Telephone Company of Pennsylvania, LLC d/b/a CenturyLink's new switching equipment.**

Wherefore, applicant prays your Honorable Commission to approve the application:

The United Telephone Company of Pa., LLC
d/b/a CenturyLink

Stanley Urich
Signature of Applicant

§ 1.36. Verification.

(a) Applications, petitions, formal complaints, motions and answers thereto containing an averment of fact not appearing of record in the action or containing a denial of fact shall be personally verified by a party thereto or by an authorized officer of the party if a corporation or association. Verification means a signed written statement of fact supported by oath or affirmation or made subject to the penalties of 18 Pa. C.S. §4904 (relating to unsworn falsification to authorities). If verification is required, notarization is not necessary.

(b) The Verification form should comply substantially with the following:

VERIFICATION

I, Stanley Urich, hereby state that the facts above set forth are true and correct to the best of my knowledge, information and belief, and that I expect to be able to prove the same at a hearing held in this matter. I understand that the statements herein are made subject to the penalties of 18 Pa. C.S. § 4904 (relating to unsworn falsification to authorities).

Date: 6-6-2012

Stanley Urich
(Signature)

CERTIFICATE OF SERVICE

I hereby certify that I have this day served a true copy of the foregoing document upon the participants, listed below, in accordance with the requirements of § 1.54 (relating to service by participant).

*PA Dept of Transportation
2550 Oakland Ave. .
PO Box 429
Indiana, Pa. 15701
Ph: 724-357-2800*

*Mark Chappell, PE Chief
ROW & Utility Division
PENN DOT Bureau of Design
P.O.Box 3362
Harrisburg, Pa. 17105-3362*

*Summit Township
502 Bonniebrook Rd.
Butler, Pa. 16002
Chuck Montag
Ph: 724-285-1168*

*Gina M. D'Alfonso
Dept. of Transportation
Office of Chief Counsel
9th Floor
P.O.Box 8212
Harrisburg, Pa. 17105-8212*

*Butler County Hwy Dept.
c/o Bd of County Commissioners
124 W.Diamond St.,
Butler, Pa. 16001
Ph: 724-285-4731*

*RelTek, LLC
751 High St.
Burlington, NJ 08016
Attn: Paul Catania
Ph: 609-387-4357*

*Buffalo & Pittsburg Railroad
218 Liberty St.
Warren, Pa. 16365
Attn: Mr. William Gentilman
Ph: 814-726-3552*

Dated this 6th of June, 2012

PA DOT
SECRETARY'S BUREAU

2012 JUN -8 AM 10:16

RECEIVED


(Signature)



EXHIBIT A
 MAP = V-96.1/10
 STATION = VS962+00(±)
 MILEPOST = 282+2295(±)

BUTLER COUNTY, PA
 SUMMIT TOWNSHIP

RECEIVED

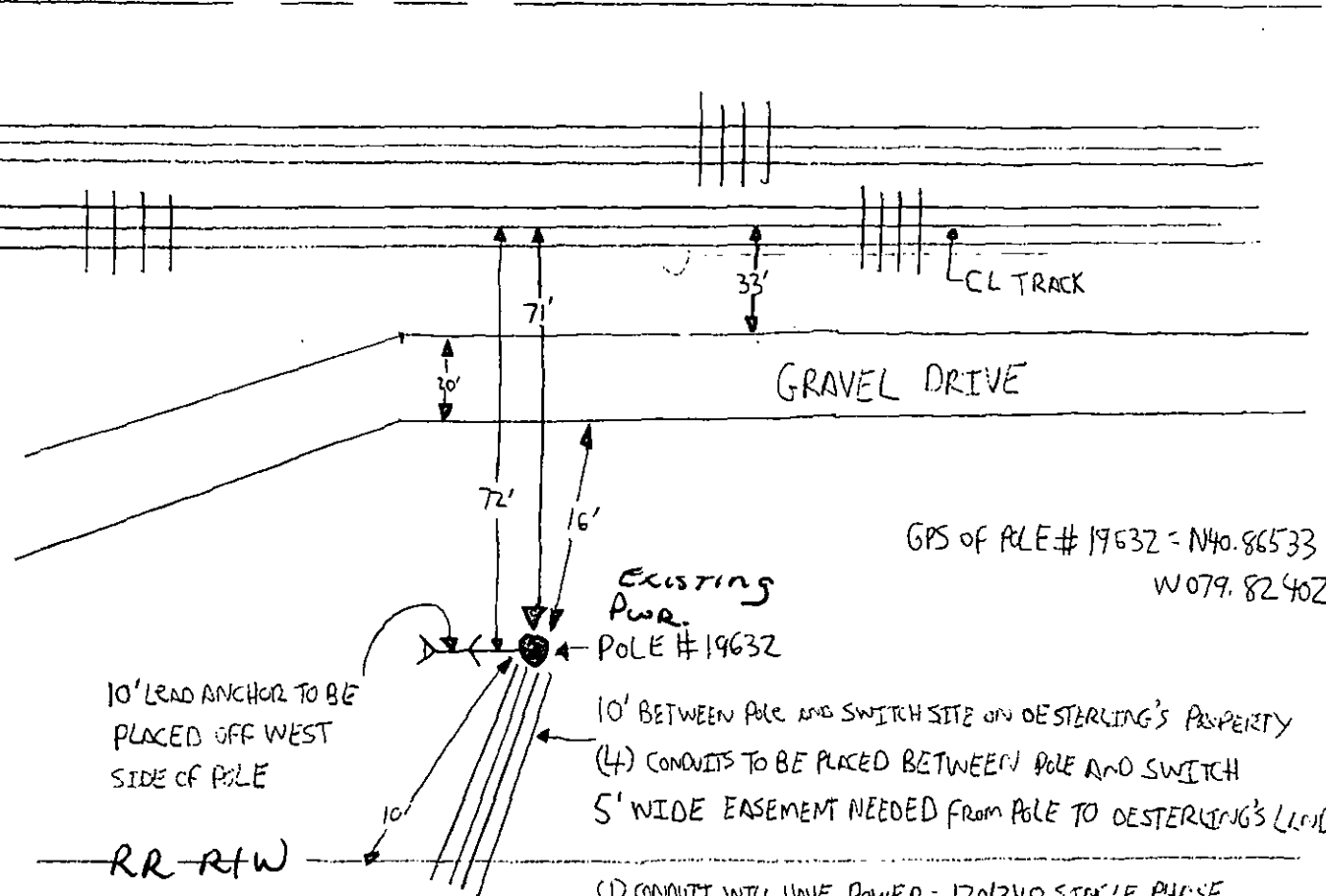
2012 JUN 16 10:16 AM

SECRETARY'S BUREAU

RAILROAD R/W

PA PUBLIC UTILITY COMMISSION
 JUN 07 2012
 BUREAU OF TRANSPORTATION & SAFETY
 RAIL SAFETY DIVISION

RAILROAD R/W



GPS OF POLE # 19632 = N40.86533
 W079.82402

10' LEAD ANCHOR TO BE PLACED OFF WEST SIDE OF POLE

10' BETWEEN POLE AND SWITCH SITE ON OESTERLING'S PROPERTY
 (4) CONDUITS TO BE PLACED BETWEEN POLE AND SWITCH
 5' WIDE EASEMENT NEEDED FROM POLE TO OESTERLING'S LAND

OESTERLING PROPERTY
 CENTURYLINK SWITCH PLACEMENT

- (1) CONDUIT WILL HAVE POWER = 120/240 SINGLE PHASE
- (1) CONDUIT WILL HAVE FIBER OPTIC CABLE WITH 24 FIBER STRANDS
- (1) CONDUIT WILL HAVE 600 PAIR COPPER CABLE
- (1) CONDUIT WILL BE EMPTY/SPACE

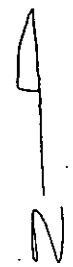
CONDUITS WILL BE 4" DIAMETER
 NO DEEPER THEN 36"

EXHIBIT A-1

MAP = V-96.1/10
STATION = V5962+00 (+/-)
MILEPOST = 282+2295 (+/-)

BUTLER COUNTY, PA
SUMMIT TWP.

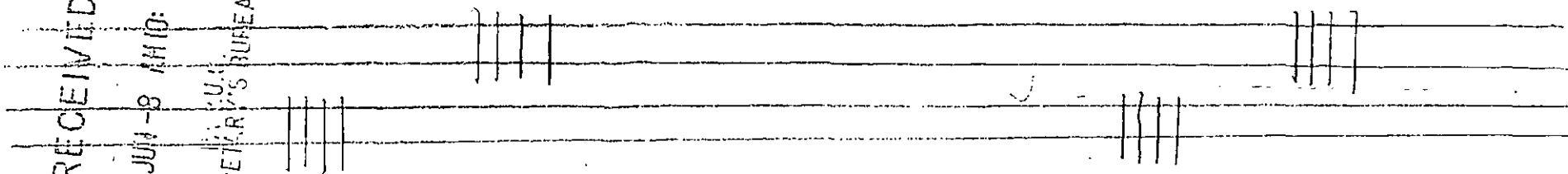
PA PUBLIC UTILITY COMMISSION
JUN 07 2012
BUREAU OF RAIL SAFETY DIVISION



RECEIVED

2012 JUN -8 AM 10:17

SECRETARY'S BUREAU



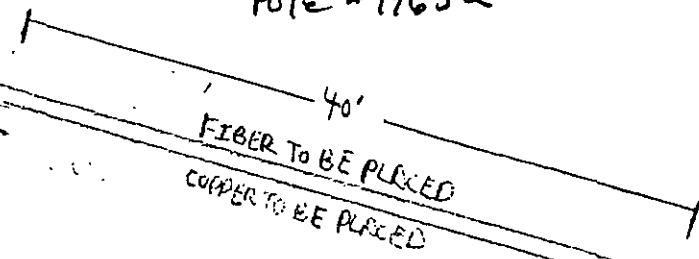
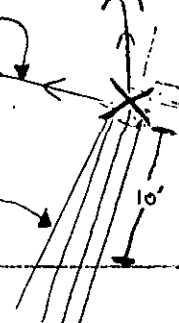
RAILROAD R/W

PROPOSED CTL ANCHOR

PROPOSED CTL CONDUITS 4 TOTAL

EXISTING POWER ANCHOR

EXISTING PILE #19632



SEE EXHIBIT B

OESTERLING
PROPERTY

EXHIBIT B

MILEPOST- 182 + 2023 (+/-)

BUTLER COUNTY, PA
SUMMIT TOWNSHIP

N

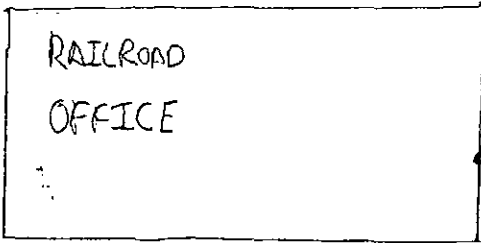
RAILROAD R/W

Ca bit 143 + 144
will be removed
on assets
w/ #

CL TRACK

GPS = N 40.86506
W 079.82301

* POLE 143 WILL BE REPLACED AND (3)
NEW ANCHORS WILL BE ADDED TO IT



SEE EXHIBIT
A-1

OESTERLING
PROPERTY

FIBER TO BE PLACED
COPPER TO BE PLACED

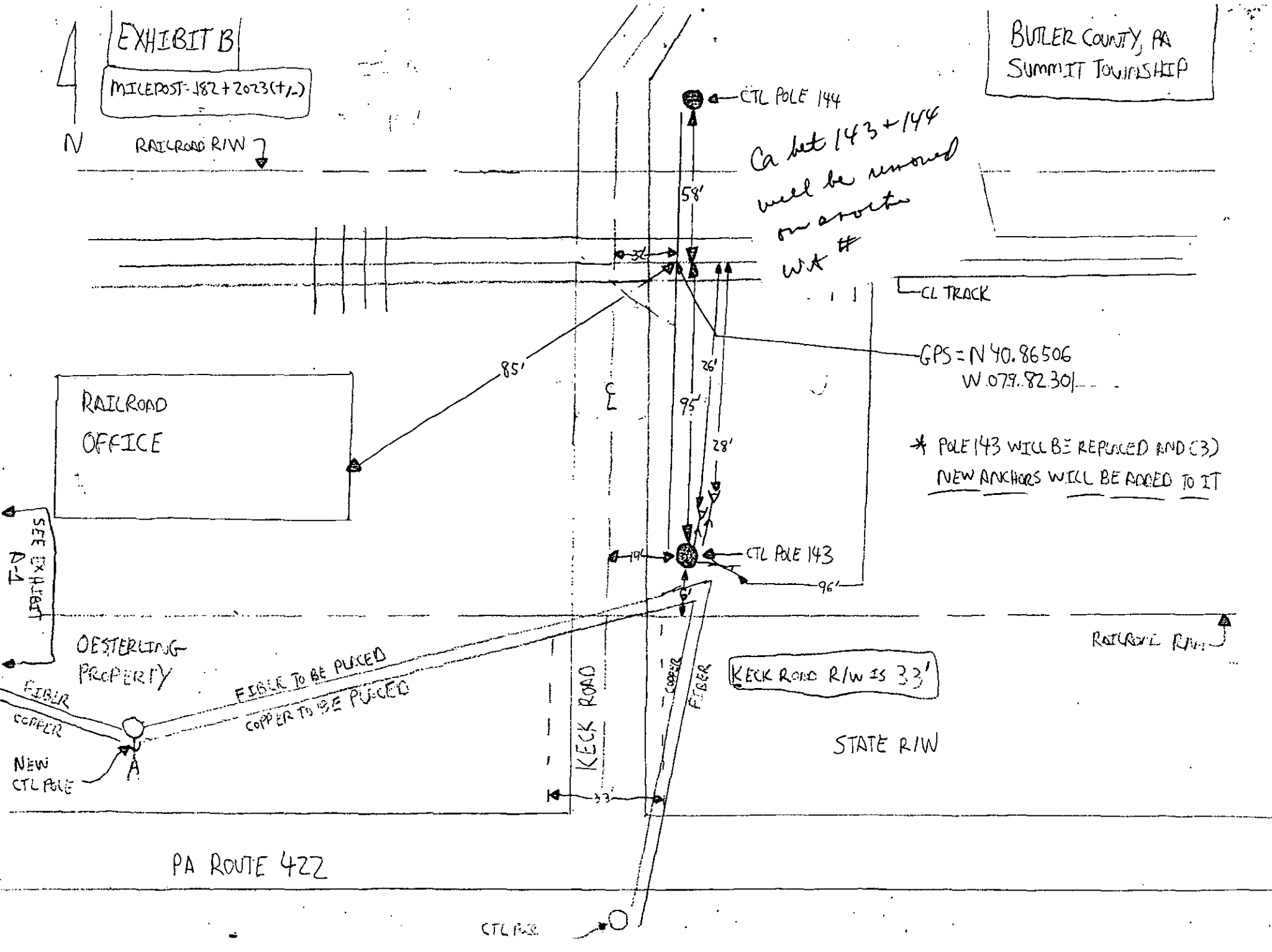
NEW
CTL POLE

KECK ROAD R/W IS 33'

STATE R/W

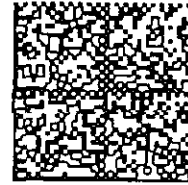
PA ROUTE 422

CTL POLE





Ben J
COMMUNITY LEGAL SERVICES
OF PHILADELPHIA
1424 Chestnut Street, Philadelphia, PA 19102



neopost[®]

049J82040473

\$02.290

06/06/2012

Mailed From 19102
US POSTAGE

Secretary Rosemary L. Chiavetta
Pennsylvania Public Utility Commission
P.O. Box 3265
Harrisburg, PA 17105-3265