

**Charlotte Krupa**  
Agency Coordinator

**PPL Electric Utilities Corporation**  
Two North Ninth Street  
Allentown, PA 18101-1179  
Tel. 610.774.6287 Fax 610.774.6875  
cakrupa@pplweb.com



July 10, 2012

Ms. Rosemary Chiavetta, Secretary  
Pennsylvania Public Utility Commission  
P. O. Box 3265  
Harrisburg, Pa 17105

Dear Secretary Chiavetta:

Enclosed herewith for filing under Section 507 of the Public Utility Code, Title 66 are one (1) original and three (3) copies of Right of Way Agreement, adopted June 29, 2012 by Emmaus Borough, and accepted July 6, 2012, by the PPL Electric Utilities Corporation (PPL), wherein Emmaus Borough grants PPL the right to construct, operate, and maintain its electric line facilities in the Borough of Emmaus, County of Lehigh.

Should you have any questions, please call.

Sincerely,

A handwritten signature in black ink that reads "Charlotte Krupa". The signature is written in a cursive, flowing style.

Charlotte Krupa  
Agency Coordinator

Enclosure

RECEIVED  
2012 JUL 13 AM 10:26  
PA P.U.C.  
SECRETARY'S BUREAU

RECEIVED

2012 JUL 13 AM 10:27

PA P.U.C.  
SECRETARY'S BUREAU

Prepared by: PPL Electric Utilities  
Return to: PPL Electric Utilities  
827 Hausman Road  
Allentown, PA 18104  
Attn: Liz Mease  
484-634-3268

Form 4337 (2/2002)

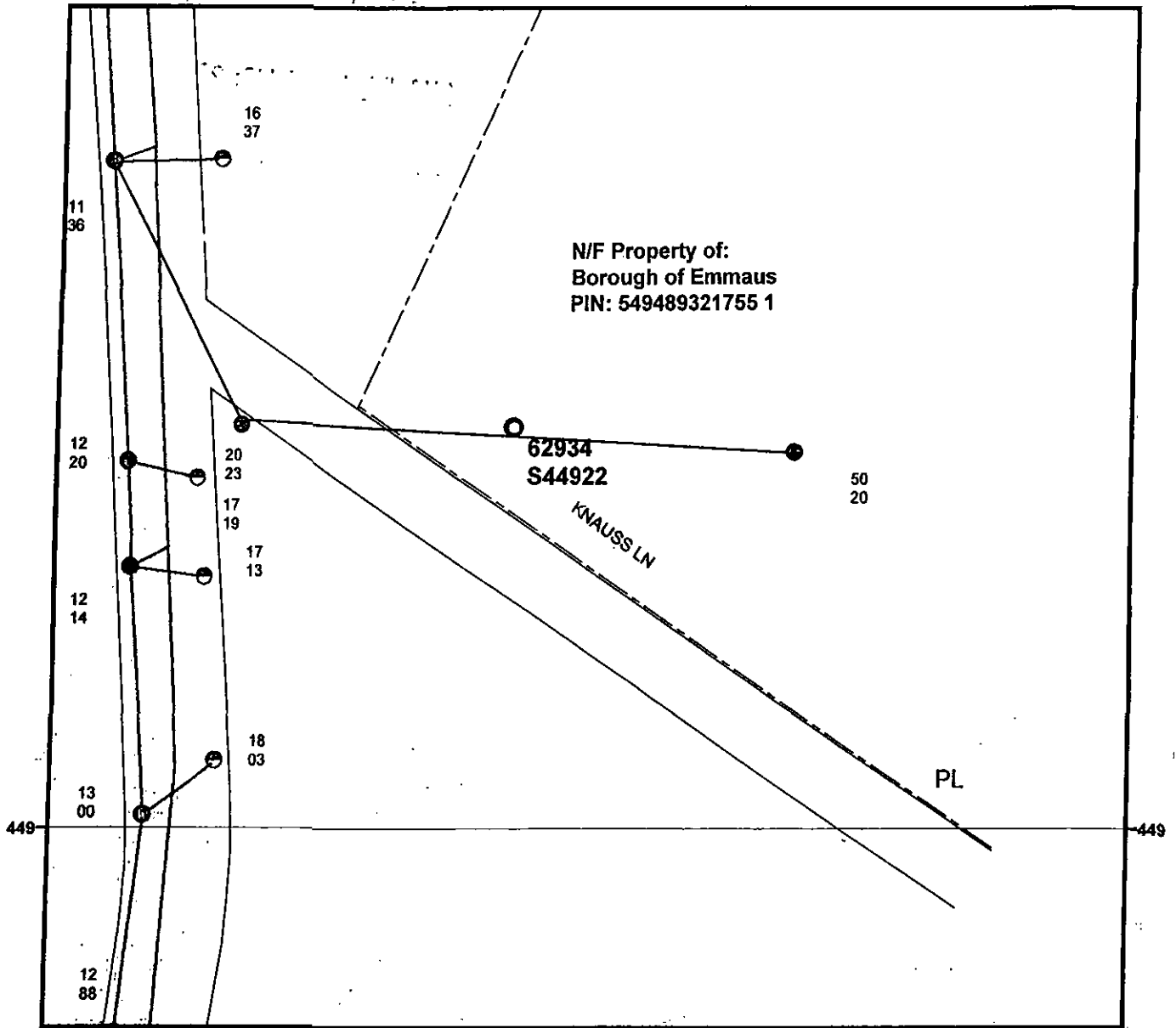
W.R. Number:					
7	1	1	4	5	9



**RIGHT-OF-WAY AGREEMENT**  
Corporation

KNOW ALL MEN BY THESE PRESENTS, That the Borough of Emmaus, a corporation of Pennsylvania hereinafter called "GRANTOR", intending to be legally bound, does hereby for itself and its successors and assigns grant unto **PPL ELECTRIC UTILITIES CORPORATION**, hereinafter referred to as "PPL", its successors, assigns, and lessees, the right, privilege and authority to construct, reconstruct, operate and maintain its electric and communication lines consisting of one (1) pole and overhead wires, cables, fixtures and apparatus upon, across, over, under and along the property which said Grantor owns or in which it has any interest located along E. Main Street, situate in the Borough of Emmaus, County of Lehigh, Commonwealth of Pennsylvania; and along the public highways adjoining the said property, including the right of ingress and egress to and from the said lines for any of the aforesaid purposes; also the right to cut down any and all trees within fifteen (15) feet each side of centerline of the electric/communication line and the right to trim any and all trees within fifteen (15) feet each side of centerline of the electric/communication line and to remove brush along said lines which in the judgment of said PPL menace the said lines; and also the right to permit the attachment of wires and cables of any other person or company to said poles. The said PPL, its successors, assigns and lessees shall not be limited in its or their enjoyment of the rights hereby granted as may be first constructed, but shall have at all times in the future the right to construct, operate and maintain and from time to time to reconstruct additional electric/communication wires, cables, fixtures and apparatus upon, across, over, under and along subject property. Any poles or facilities erected hereunder along a highway, whether within or outside the highway limits, may be relocated to conform to new or relocated highway limits.

A copy of this agreement and an acceptance hereof by PPL shall be filed by PPL with the Pennsylvania Public Utility Commission, and this agreement shall thereafter become effective in accordance with the provisions of the Public Utility Law.



**Note:**  
For exact location of right-of-way and/or facilities within right-of-way, contact the local PPL Electric Utilities Corporation office.

**Legend**

- ⊕ Foreign Owned Pole, Existing
- Pole, Proposed
- Pole, Existing
- Overhead Wires, Existing
- - - Property Line +/-



Not for Construction

W.D.: 288102	PLAN SHOWING FACILITIES ON PROPERTY OF:	
W.R.: 711459	Borough of Emmaus	
S.R.: N/A	EMMAUS BORO.	LEHIGH COUNTY
SCALE: NONE	PPL Electric Utilities Corporation ALLENTOWN, PENNA.	
DATE: 3/13/2012	APPROVAL:	DATE: 6/28/12
ENGR.: Hartrick, Scott R.	SIGNATURE: <i>SLMR</i>	
		DWG. NO.:

IN WITNESS WHEREOF, Grantor has caused this agreement to be executed in its corporate name by its proper officers, this 29<sup>th</sup> day of June, 2012.

28 South 4<sup>th</sup> Street, Emmaus, PA 18049

P.O. Address

ATTEST:

Emmaus Borough

Kathleen J. Gaund  
Secretary

Shane M. Pepe  
Shane M. Pepe, Borough Manager

(SEAL)

RECEIVED  
2012 JUL 13 AM 10:27  
PA P.U.C.  
SECRETARY'S BUREAU

ACCEPTED AND CONDITIONS AGREED TO:

Witness:

PPL Electric Utilities Corporation

By:

Quinn Schleder 7/6/12

Charlotte A. Krupa  
Charlotte A. Krupa

7-612

ST CL  
ST CL  
ST CL  
ST CL  
ST CL  
ST CL

CHARLOTTE KRUPA  
PPL UTILITIES  
2 NORTH 9<sup>TH</sup> ST - GENN3  
ALLENTOWN PA 18101



RECEIVED

2012 JUL 13 AM 10:26

PA P.U.C.  
SECRETARY'S BUREAU

**FIRST CLASS MAIL**

MS ROSEMARY CHIA VETTA  
PA PUBLIC UTILITY COMMISSION  
PO BOX 3265  
HARRISBURG PA 17105-3265



UNITED STATES POSTAGE  
02 1M \$  
0004255848 JU  
MAILED FROM ZIP C