

MARGARET A. MORRIS
DIRECT DIAL: (215) 495-6524
E-MAIL: mmorris@regerlaw.com

February 27, 2013

Via Electronic Filing

Ms. Rosemary Chiavetta, Esquire
Secretary
Pennsylvania Public Utility Commission
Commonwealth Keystone Building
P.O. Box 3265
Harrisburg, PA 17105

Re: Docket No. A-2013-_____
Trooper Road Bridge
Application of PECO Energy Company to install gas facilities

Dear Secretary Chiavetta:

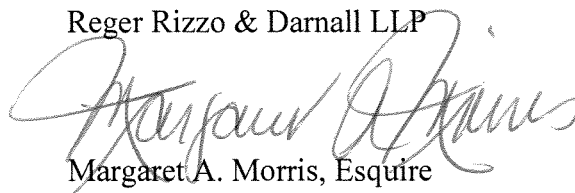
Enclosed for filing is the original Application of PECO Energy Company ("PECO") to install its gas facilities in the above grade crossing at Trooper Road, Upper Merion Township, Montgomery County. **This Application should be consolidated with the pending Application of Penn DOT at Docket No. A-2012-2294244.**

As indicated on the Certificate of Service, a copy of PECO's Application has been provided to the Service List in the manner indicated.

If there are any questions, please do not hesitate to contact me.

Very truly yours,

Reger Rizzo & Darnall LLP



Margaret A. Morris, Esquire

Enclosure

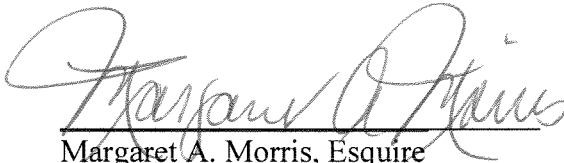
cc: Service List
George M Steiner, TUS

Re: Docket No. A-2013-_____
Trooper Road Bridge
Application of PECO Energy Company to install gas facilities

CERTIFICATE OF SERVICE

I hereby certify that a true and correct copy of the foregoing document has been served upon the following person on the attached service list, by 1st Class Mail, in accordance with the requirements of §1.54 (relating to service by a participant).

Dated: February 27, 2013


Margaret A. Morris, Esquire

Re: Docket No. A-2013-_____
Trooper Road Bridge
Application of PECO Energy Company to install gas facilities

MARK CHAPPELL PE CHIEF
ROW & UTILITY DIVISION
PENNDOT BUREAU OF DESIGN
PO BOX 3362
HARRISBURG PA 17105-3362

GINA M. D'ALFONSO ATTORNEY
DEPARTMENT OF TRANSPORTATION
OFFICE OF CHIEF COUNSEL 9TH FLOOR
PO BOX 8212
HARRISBURG PA 17105-8212

KEVIN COCHRAN
RCN TELECOM SERVICES, INC.
3 RAYMOND DRIVE
HAVERTOWN PA 19083

WILLIAM L QUINN
SPECTRA ENERGY
TEXAS EASTERN TRANSMISSION LP
560 POTTSTOWN PIKE
CHESTER SPRINGS PA 19425

ERIC J MEISSNER
QWEST COMMUNICATIONS
2011 HARTEL STREET
LEVITTOWN PA 19057

LESTER C TOASO
PENNDOT DISTRICT 6-0
ATTN: SONNY BOCCHINFUSO
7000 GEERDES BOULEVARD
KING OF PRUSSIA PA 19406

THOMAS CINAGLIA, DIR OF PUBLIC WKS
WEST NORRITON TOWNSHIP
1630 WEST MARSHALL STREET
JEFFERSONVILLE PA 19403

J N CARTER, CHIEF ENGINEER
NORFOLK SOUTHERN RAILWAY CO
BRIDGES & STRUCTURES DEPT, BOX142
1200 PEACHTREE STREET NE
ATLANTA GA 30309-3579

DEAN BOYERS
VERIZON BUSINESS
ATTN: INVESTIGATIONS
2400 NORTH GLENVILLE DRIVE
RICHARDSON TX 75082

FRANCES P ORTH, ESQUIRE
AQUA PENNSYLVANIA INC
762 WEST LANCASTER AVENUE
BRYN MAWR PA 19010-3489

SHAWN SCANLON - NETWORK SUPERVISOR
PA-AMERICAN WATER CO
171 WEST JOHNSON HIGHWAY
NORRISTOWN PA 19404-0871

MIKE CALDWELL, SUPERINTENDENT
VALLEY FORGE NATIONAL HISTORIC PARK
1400 NORTH OUTER LINE DRIVE
KING OF PRUSSIA PA 19406-1009

STEVE ALTOBELLI
AT&T LOCAL SERVICES
c/o TREC GROUP, INC
536 BALTIMORE PIKE
SPRINGFIELD PA 19064

MICHAEL STOCKER, PROJECT MGR
COMCAST CABLE COMMUNICATIONS
190 SHOEMAKER ROAD
POTTSTOWN PA 19464

CHRIS RICCIUTI
ABOVENET COMMUNICATIONS INC
170 ROBBINS ROAD
DOWNTOWN PA 19335

DEIRDRE JOHNS
VERIZON PENNSYLVANIA INC
180 SHEREE BOULEVARD, SUITE 2100
EXTON PA 19341

SCOTT DREILING PROJECT MANAGER
XO COMMUNICATIONS
1220 BROADCASTING ROAD SUITE 201
WYOMISSING PA 19610

RANDAL S NOE, ESQUIRE
NORFOLK SOUTHERN CORPORATION
THREE COMMERCIAL PLACE
NORFOLK VA 23510

JAMES P MELIA, ESQUIRE
KIRKPATRICK, LOCKHART, NICHOLSON & GRAHAM
17 NORTH SECOND STREET - 18TH FLOOR
HARRISBURG PA 17101-1507

TRACY HOFFMAN
SUNOCO PIPELINE LP – ONE CALL DEPT
525 FRITZTOWN ROAD
SINKING SPRING PA 19608

RICHARD RICKETTS
WILLIAMS GAS PIPELINE - TRANSCO
99 FARBER ROAD
PRINCETON NJ 08540

RONALD WAGENMANN, MANAGER
UPPER MERION TOWNSHIP
175 WEST VALLEY FORGE ROAD
KING OF PRUSSIA PA 19406

LEO BAGLEY
MONTGOMERY CO PLANNING COMMISSION
1 MONTGOMERY PLAZA - SUITE 201
PO BOX 311
NORRISTOWN PA 19404-0311

JOE PANKUCH, ENGINEER DIR
SUNESYS LLC
185 TITUS AVENUE
WARRINGTON PA 18976

JON SCHMIDT, PE
AECOM
1700 MARKET STREET, SUITE 1600
PHILADELPHIA, PA 19103

BEFORE THE
PENNSYLVANIA PUBLIC UTILITY COMMISSION

Application of PECO Energy Company for the :
Approval to alter the above-grade crossing :
So as to install a new gas main, where Trooper : Docket No. A-2013-_____
Road, S.R. 3051, crosses the above-grade tracks :
Of Norfolk Southern Railway Company in :
Upper Merion Township, Montgomery County. :

APPLICATION OF PECO ENERGY COMPANY TO ALTER ABOVE-GRADE
CROSSING AT TROOPER ROAD, MONTGOMERY COUNTY

To Pennsylvania Public Utility Commission:

1. The name and address of the Applicant is PECO Energy Company, 2301 Market Street, Philadelphia, PA 19101-8699.
2. The Applicant is a public utility incorporated under Delaware Law and is a subsidiary corporation of the Exelon Corporation. The Applicant, *inter alia*, provides gas service in Pennsylvania as well as other states in the eastern portion of the United States.
3. PECO is represented by the following counsels:

Margaret A. Morris, Esquire (authorized to receive service)
Reger Rizzo & Darnall LLP
Cira Centre, 13th Floor
2929 Arch Street
Philadelphia, PA 19104
(215) 495-6524 (voice)
(215) 495-6600 (fax)
mmorris@regerlaw.com

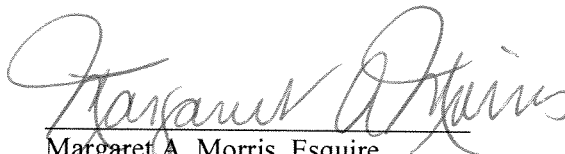
Ward L. Smith, Esquire
Exelon Business Services Group
2301 Market Street
P.O. Box 8699
Philadelphia, PA 19101-8699
(215) 841-6863 (voice)
(215) 568-3389 (fax)

ward.smith@exeloncorp.com

4. The Applicant desires to install a gas main within the public right of way of Trooper Road Bridge which crosses the tracks of Norfolk Southern Railway Company (“the Railroad”) in Upper Merion Township, Montgomery County, Pennsylvania as shown on the plan and profile attached hereto as Exhibit A.
5. The other agencies and public utilities with an interest in the proposed project are set forth on Exhibit B.
6. Applicant agrees to bear all the costs incurred in furnishing material and performing the work necessary to complete the installation of a new gas main to serve a new customer.
7. Applicant avers it is necessary and proper for the accommodation, convenience and service of the public that Applicant be authorized by the Commission to construct and maintain its facilities as proposed.
8. It is requested that approval of this Application be expedited so that the work can be coordinated with the work associated with PennDOT’s Application in Docket No. A-2012-2294244 wherein PennDOT is seeking to construct a portion of the Old Betzwood Bicycle/Pedestrian Trail by replacing the existing Trooper Road Bridge above the Railroad’s tracks.
9. Coordination of both applications will result in an efficient use of time and resources of the parties.
10. Applicant does not request that a field conference be held in this matter unless deemed necessary by the Commission. It should be noted that a field conference in Docket No. A-2012-2294244 was held on April 25, 2012. The Applicant was not able to participate in that field conference; no opposition was voiced to PennDOT’s Application.
11. Applicant does not request a hearing prior to issuance of an order approving the application. Any hearing required to determine the final allocation of costs can be held after issuance of an order approving the project at the parties’ initial cost and after completion of the work.

WHEREFORE, PECO Energy Company, requests that its Application to alter the above-grade crossing so as to install a new gas main where Trooper Road Bridge crosses the tracks of Norfolk Southern Railway Company be granted.

Respectfully submitted,



Margaret A. Morris, Esquire
Attorney I.D. # 75048
Reger Rizzo & Darnall, LLP
Cira Centre, 13th Floor
2929 Arch Street
Philadelphia, PA 19104
(215) 495-6524 (voice)
(215) 495-6600 (fax)
mmorris@regerlaw.com

Dated: February 27, 2013

Ward L. Smith, Esquire
Attorney I.D. # 47670
Exelon Business Services Group
2301 Market Street
P.O. Box 8699
Philadelphia, PA 19101-8699
(215) 841-6863 (voice)
(215) 568-3389 (fax)
ward.smith@exeloncorp.com

Counsel for PECO Energy Company

VERIFICATION

I, Rodney Stark, of PECO Energy Company, hereby state that the facts in the foregoing document(s) are true and correct to the best of my knowledge, information and belief. I understand that false statements therein are made subject to the penalties of 18 Pa. C.S. § 4904, relating to unsworn falsifications to authorities.

Dated: 2/20/13

Rodney Stark
Rodney Stark,
Manager
Real Estate Department,
PECO Energy Company

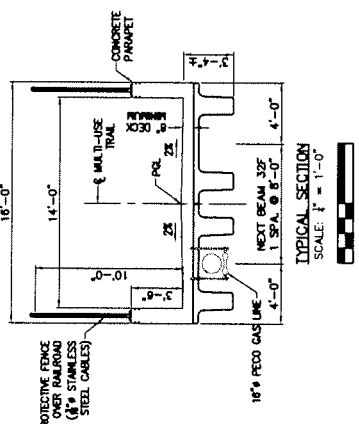
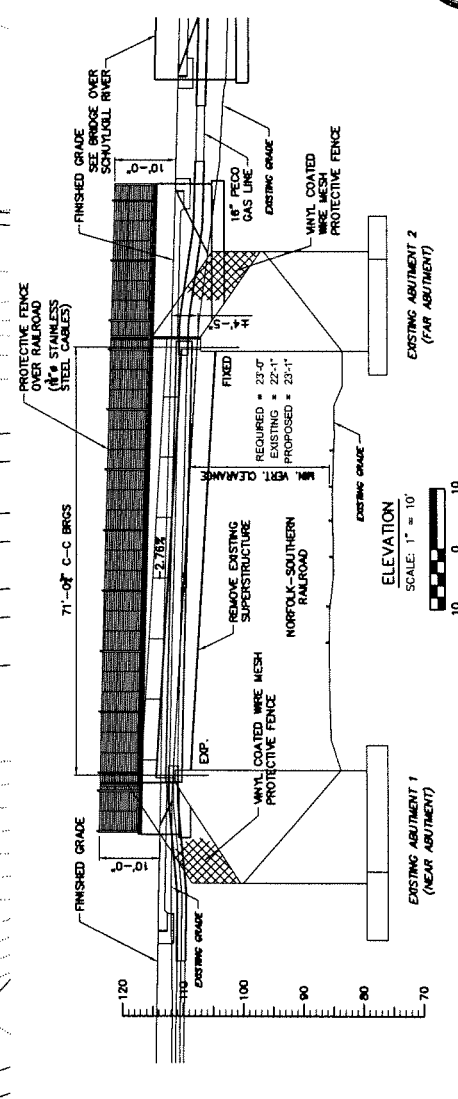
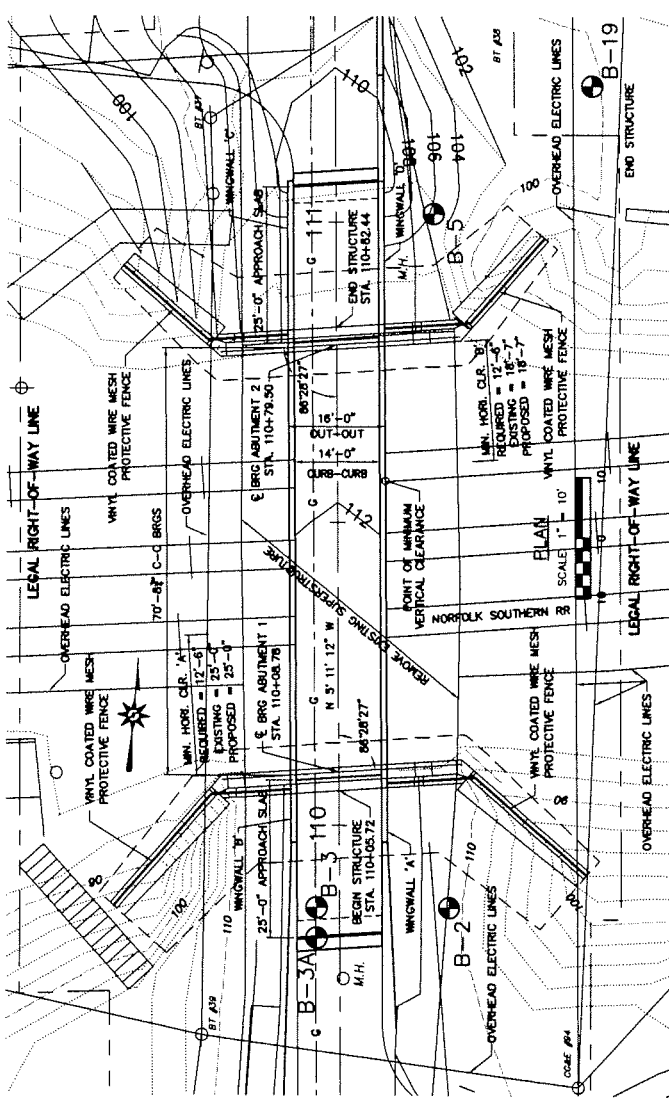
Exhibit A

PECO Energy Company's Plan and Profile

Gas Main Installation at Trooper Road Bridge Upper Merion Township, Montgomery County

BORING NO.	STATION	OFFSET
B-2	109+86	18' RIGHT
B-3	109+86	4' LEFT
B-5A	109+81	14' LEFT
B-5	109+81	14' LEFT
B-19	111+01	3' LEFT

- INDEX OF DRAWINGS**
- GENERAL PLAN & ELEVATION
 - GENERAL NOTES & QUANTITIES
 - ABUTMENT 1 PLAN
 - ABUTMENT 2 PLAN
 - ABUTMENT 1 WALLS
 - ABUTMENT 2 WALLS
 - SUBSTRUCTURE DETAILS 1
 - BAS SCHEDULES
 - BEAM DETAILS
 - END DIAPHRAGMS 1
 - END DIAPHRAGMS 2
 - SLAB PLAN
 - PEDESTRIAN RAILING
 - UTILITIES



DESCRIPTION	DWG. NO.	APP. DATE
PROTECTIVE FENCE	BC-701M	5-18-12
ALUMINUM PEDESTRIAN RAILING	BC-716M	5-18-12
ANCHOR SYSTEMS	BC-724M	10-26-10
WALL CONSTR. & EXE. ADMIT DETAILS	BC-725M	10-26-10
REINFORCEMENT BAR FABRICATION DETAILS	BC-726M	5-18-12
CONCRETE DECK SLAB DETAILS	BC-755M	5-18-12
BEARINGS	BC-755M	5-18-12
MISCELLANEOUS PRESTRESSED DETAILS	BC-755M	5-18-12
REINFORCED CONCRETE REPAIR	BC-763M	5-18-12
TYPICAL WATERPROOFING AND EXPANSION DETAILS	BC-768M	5-18-12
CLASSIFICATION OF EARTHWORK	RC-10W	8-01-10
CLASSIFICATION OF EARTHWORK FOR STRUCTURES	RC-11W	8-01-10
BACKFILL AT STRUCTURES	RC-12M	8-01-10

Mark	Description	By	Chk'd	App'd	Date
REVISIONS					

S.R. 3051 FORMERLY L.R. 463
COMMONWEALTH OF PENNSYLVANIA
 DEPARTMENT OF TRANSPORTATION

MONTGOMERY COUNTY
 UPPER MERION TOWNSHIP
 S.R. 3051 SECTION C22
 SIMPLE SPAN P/S CONCRETE NEXT BEAM
 MULTI-USE TRAIL BRIDGE
 OVER NORFOLK-SOUTHERN RAILROAD
 GENERAL PLAN & ELEVATION

RECOMMENDED **1 OF 16**
 DISTRICT BRIDGE ENGINEER **S-31401**

Prepared By:
 CASSIO ENGINEERING, INC.
 5013 Deer Drive
 Downingtown, PA 19335
 (610) 873-8998 Voice
 (610) 873-3793 Fax

In Association With:
 BOLES SMYTH ASSOCIATES, INC.
 2400 Chestnut Street
 Philadelphia, PA 19103

November 15, 2012



DESIGNED BY: **DAVID L. FRENCH, P.E.**
 RLL ALF CES

ITEM NUMBER	QUANTITY	ITEM NUMBER	UNIT	DESCRIPTION	ITEM NUMBER	UNIT	TOTAL LUMP SUM
(INFORMATIONAL)							LUMP SUM
8000-0002	1	8030	LS	CHAMFER EDGES OF CONCRETE 1 INCH BY 1 INCH, EXCEPT AS NOTED.	8000-0002	LS	
8100-0002		8030	LS	ALL DIMENSIONS SHOWN ARE HORIZONTAL, EXCEPT AS NOTED.	8100-0002	LS	
		8030	LS	DECK SLAB THICKNESS INCLUDES ONE HALF INCH INTEGRAL WEARING SURFACE.		LS	
		8030	LS	DIMENSIONS SHOWN ARE FOR A NORMAL TEMPERATURE OF 59° F.		LS	
		8030	LS	PROVIDE MINIMUM LAP AND EMBEDMENT LENGTHS OF 30 DIAMETERS OR IN ACCORDANCE WITH LATEST AASHTO MODIFIED BY DM 4, WHICHEVER IS GREATER.		LS	
		8030	LS	PRESTRESSED CONCRETE NEXT BEAM SHALL COMPLY WITH THE REQUIREMENTS OF SECTION 102.05 OF PUBLICATION 408. CONCRETE STRENGTH WILL BE 8000 PSI. PROVIDE MINIMUM 270 KSI LOW RELAXATION STRANDS.		LS	
		8030	LS	PREPARE BEARING AREAS AS SPECIFIED IN PUBLICATION 408, SECTION 109.1-14.3.		LS	
		8030	LS	TEST BORING SHEETS ARE INCLUDED FOR THE CONFORMANCE OF THE DEPARTMENT AND ARE NOT TO BE USED FOR CONTRACT DRAWINGS AS SPECIFIED IN SECTION 102.05 OF PUBLICATION 408.		LS	
		8030	LS	ALL DIMENSIONS ARE SHOWN TO THE FRONT FACE OF UNLESS OTHERWISE NOTED.		LS	
		8030	LS	UTILITIES		LS	
		8030	LS	COORDINATE, LOCATE AND CONDUCT ALL WORK RELATED TO PUBLIC UTILITIES AND PRIVATE UTILITIES IN ACCORDANCE WITH PUBLICATION 408, SECTIONS 105.06 AND 107.12.		LS	
		8030	LS	FOUNDATION		LS	
		8030	LS	THE BOTTOM OF FOUNDATION EXCAVATION SHALL BE INSPECTED BY THE DISTRICT GEOTECHNICAL ENGINEER WITH THAT THE BEARING MATERIAL IS IN CONFORMANCE WITH THE REQUIREMENTS OF SECTION 102.05 OF PUBLICATION 408. OVEREXCAVATED AND REPLACED WITH NO. 57 COARSE AGGREGATE, AS DIRECTED BY THE ENGINEER. FOUNDATION AND VERIFICATION SHALL TAKE PLACE PRIOR TO PLACEMENT OF CONCRETE.		LS	
		8030	LS	SPREAD FOOTINGS MAY BE ORDERED BY THE ENGINEER TO BE AT ANY ELEVATION OR DIMENSIONS NECESSARY TO PROVIDE A PROPER FOUNDATION.		LS	
		8030	LS	EXCAVATE ACCORDING TO CURRENT OSHA OR OTHER APPLICABLE LOCAL, STATE, AND FEDERAL REGULATIONS. PROVIDE TEMPORARY SHORING OF EXCAVATED AREAS NECESSARY TO MAINTAIN THE STABILITY OF EXCAVATION. PROVIDE TEMPORARY SHORING OF EXCAVATED AREAS NECESSARY TO ENSURE STABILITY OF THE EXCAVATION.		LS	
		8030	LS	PROVIDE ADEQUATE WATER DIVERSION AND DRAINAGE TO PREVENT WATER FROM PENETRATING FOUNDATION CONSTRUCTION AND MAINTAIN THE GROUND WATER TO A MINIMUM 1 FT BELOW THE EXCAVATION SUBGRADES.		LS	
		8030	LS	MAXIMUM ALLOWABLE SETTLEMENT IS ONE (1) INCH.		LS	
		8030	LS	GENERAL NOTES:		LS	
		8030	LS	PROVIDE MATERIALS AND WORKMANSHIP IN ACCORDANCE WITH THE SPECIFICATIONS OF SECTION 408(2011), ANS/AASHTO/AWS/D1.5-2002 BRIDGE WELDING CODE, AND CONTRACT SPECIAL PROVISIONS.		LS	
		8030	LS	DESIGN SPECIFICATIONS		LS	
		8030	LS	AASHTO GUIDE SPECIFICATION FOR DESIGN OF PEDESTRIAN BRIDGES (2009), AASHTO LRFD BRIDGE DESIGN SPECIFICATIONS, SIXTH EDITION, 2010 (2011), AND THE AASHTO/AWS/D1.5-2002 BRIDGE WELDING CODE, AND CONTRACT SPECIAL PROVISIONS MAY 2012 EDITION (INCLUDING LATEST REVISIONS), WELDING TO CONFORM TO ANS/AASHTO/AWS D1.5-2002 - BRIDGE WELDING CODE.		LS	
		8030	LS	DESIGN IS IN ACCORDANCE WITH THE LOAD & RESISTANCE FACTOR DESIGN METHOD (LRFD).		LS	
		8030	LS	DESIGN LIVE LOAD		LS	
		8030	LS	PEDESTRIAN LOAD OF 90 PSF - MAINTENANCE VEHICLE H-20 OR INSPECTION VEHICLE - PAXTON MITCHELL MODEL; BBC SHOOPER (46.1 Mph) (SEE SPECIAL PROVISIONS).		LS	
		8030	LS	LIVE LOAD DISTRIBUTION TO GIRDERS IS BASED ON DM-4 DISTRIBUTION FACTORS.		LS	
		8030	LS	DEAD LOADS		LS	
		8030	LS	USE NORMAL WEIGHT CONCRETE WITH UNIT WEIGHT OF 0.150 KCF.		LS	
		8030	LS	INCLUDES SURFACE AREA DENSITY OF 0.090 KSF FOR FUTURE WEARING SURFACE ON THE DECK SLAB.		LS	
		8030	LS	INCLUDES ADDITIONAL WEIGHT OF 0.100 K/FT FOR PECCO GAS LINE AND ASSOCIATED HARDWARE.		LS	
		8030	LS	GENERAL		LS	
		8030	LS	STATIONS AND ELEVATIONS ARE IN FEET - ALL OTHER DIMENSIONS ARE IN FEET AND INCHES UNLESS OTHERWISE NOTED.		LS	
		8030	LS	VERIFY DIMENSIONS OF EXISTING STRUCTURE IN THE FIELD PRIOR TO THE SUBMISSION OF SHOP DRAWINGS		LS	
		8030	LS	PROVIDE 2 INCHES CONCRETE COVER ON REINFORCEMENT BARS, EXCEPT AS NOTED.		LS	
		8030	LS	USE HIGH PERFORMANCE CEMENT CONCRETE IN DECK SLAB.		LS	
		8030	LS	USE CLASS AA CEMENT CONCRETE IN PARAPETS AND ABUTMENTS ABOVE THE BEAM SEAT CONSTRUCTION AND IN DIAPHRAGMS, CHEEKWALLS AND SHEAR BLOCKS.		LS	
		8030	LS	USE CLASS A CEMENT CONCRETE IN ABUTMENTS, WINGWALLS AND FOOTINGS, UNLESS NOTED OTHERWISE.		LS	
		8030	LS	A HIGHER CLASS CONCRETE MAY BE SUBSTITUTED FOR A LOWER CLASS CONCRETE AT NO ADDITIONAL COST TO THE DEPARTMENT.		LS	
		8030	LS	PROVIDE GRADE 80 REINFORCING STEEL BARS THAT MEET THE REQUIREMENTS OF ASTM A 615A B 18M. A 989A 998M OR A 706A 706M, DO NOT WELD GRADE 80 REINFORCING STEEL BARS UNLESS SPECIFIED. GRADE 80 REINFORCING STEEL BARS SHALL BE PROVIDED WITH A PROPORTIONAL INCREASE IN CROSS SECTIONAL AREA, IF APPROVED BY THE CHIEF BRIDGE ENGINEER. DO NOT USE RAIL STEEL A 989A 998M REINFORCEMENT BARS.		LS	
		8030	LS	USE EPOXY-COATED REINFORCEMENT BARS IN THE DECK SLAB, BARRIERS, DIAPHRAGMS AND STIRRUPS PROTRUDING FROM PRESTRESSED BEAMS INTO THE REINFORCEMENT BARS AS INDICATED.		LS	
		8030	LS	RAKE FINISH ALL HORIZONTAL CONSTRUCTION JOINTS, EXCEPT AS INDICATED.		LS	
		8030	LS	SEISMIC FORCES WERE CONSIDERED FOR ACCELERATION COEFFICIENT OF 0.15.		LS	
		8030	LS	CONSTRUCT DECK SLAB TRANSVERSE CONSTRUCTION JOINTS PARALLEL TO BRIDGE CENTERLINE OF BEARINGS.		LS	
		8030	LS	DESIGNED BY: DAVID BY CHECKED BY: CEC		LS	
		8030	LS	ALL		LS	

ABUTMENT 1 ABUTMENT 2 SUPERSTRUCTURE

DESCRIPTION

BRIDGE STRUCTURE, AS DESIGNED, S-31401

CLASS 3 EXCAVATION

No. 57 COARSE AGGREGATE

HIGH PERFORMANCE CEMENT CONCRETE

CLASS AA CEMENT CONCRETE

CLASS A CEMENT CONCRETE

6" STRUCTURE FOUNDATION DRAIN

SELECTED BORROW EXCAVATION, STRUCTURE BACKFILL

PROTECTIVE COATING FOR REINFORCED CONCRETE SURFACES (PENETRATING SEALERS, REINFORCED CONCRETE SUBSTRUCTURE SURFACES)

PROTECTIVE COATING FOR REINFORCED CONCRETE SURFACES (PENETRATING SEALERS, BRIDGE SUPERSTRUCTURE)

PRESTRESSED CONCRETE NEXT 32F BEAMS

PEDESTRIAN BRIDGE RAILINGS

CLASS C CEMENT CONCRETE

REINFORCEMENTS BARS

REINFORCEMENT BARS, EPOXY COATED

EPOXY INJECTION, CRACK REPAIR

CONCRETE REPAIR, TYPE 2

CLASS 3 EXCAVATION, MODIFIED

100-10220 AND 1002-0001

5553 AND 22137

100-3335 AND 100-3335

50 AND 50

800-0002 AND 426-0100

7 AND 7

CLASS C CEMENT CONCRETE

REINFORCEMENTS BARS

EPOXY INJECTION, CRACK REPAIR

CONCRETE REPAIR, TYPE 2

CLASS 3 EXCAVATION, MODIFIED

PEDESTRIAN BRIDGE RAILINGS

CLASS C CEMENT CONCRETE

REINFORCEMENTS BARS

EPOXY INJECTION, CRACK REPAIR

CONCRETE REPAIR, TYPE 2

CLASS 3 EXCAVATION, MODIFIED

PEDESTRIAN BRIDGE RAILINGS

CLASS C CEMENT CONCRETE

REINFORCEMENTS BARS

EPOXY INJECTION, CRACK REPAIR

CONCRETE REPAIR, TYPE 2

CLASS 3 EXCAVATION, MODIFIED

PEDESTRIAN BRIDGE RAILINGS

MARK

DESCRIPTION

REVISIONS

By

Chk'd

App'd

Date

S. R. 3051 FORMERLY L.R. 463

COMMONWEALTH OF PENNSYLVANIA

DEPARTMENT OF TRANSPORTATION

MONTGOMERY COUNTY

UPPER MERION TOWNSHIP

S.R. 3051 SECTION C22

SIMPLE SPAN P/S CONCRETE NEXT BEAM

OVER NORFOLK-SOUTHERN RAILROAD

GENERAL NOTES & QUANTITIES

RECOMMENDED

2 OF 16

S-31401

REVISIONS

By

Chk'd

App'd

Date

S. R. 3051 FORMERLY L.R. 463

COMMONWEALTH OF PENNSYLVANIA

DEPARTMENT OF TRANSPORTATION

MONTGOMERY COUNTY

UPPER MERION TOWNSHIP

S.R. 3051 SECTION C22

SIMPLE SPAN P/S CONCRETE NEXT BEAM

OVER NORFOLK-SOUTHERN RAILROAD

GENERAL NOTES & QUANTITIES

RECOMMENDED

2 OF 16

S-31401

REVISIONS

By

Chk'd

App'd

Date

S. R. 3051 FORMERLY L.R. 463

COMMONWEALTH OF PENNSYLVANIA

DEPARTMENT OF TRANSPORTATION

MONTGOMERY COUNTY

UPPER MERION TOWNSHIP

S.R. 3051 SECTION C22

SIMPLE SPAN P/S CONCRETE NEXT BEAM

OVER NORFOLK-SOUTHERN RAILROAD

GENERAL NOTES & QUANTITIES

RECOMMENDED

2 OF 16

S-31401

REVISIONS

By

Chk'd

App'd

Date

S. R. 3051 FORMERLY L.R. 463

COMMONWEALTH OF PENNSYLVANIA

DEPARTMENT OF TRANSPORTATION

MONTGOMERY COUNTY

UPPER MERION TOWNSHIP

S.R. 3051 SECTION C22

SIMPLE SPAN P/S CONCRETE NEXT BEAM

OVER NORFOLK-SOUTHERN RAILROAD

GENERAL NOTES & QUANTITIES

RECOMMENDED

2 OF 16

S-31401

REVISIONS

By

Chk'd

App'd

Date

S. R. 3051 FORMERLY L.R. 463

COMMONWEALTH OF PENNSYLVANIA

DEPARTMENT OF TRANSPORTATION

MONTGOMERY COUNTY

UPPER MERION TOWNSHIP

S.R. 3051 SECTION C22

SIMPLE SPAN P/S CONCRETE NEXT BEAM

OVER NORFOLK-SOUTHERN RAILROAD

GENERAL NOTES & QUANTITIES

RECOMMENDED

2 OF 16

S-31401

REVISIONS

By

Chk'd

App'd

Date

S. R. 3051 FORMERLY L.R. 463

COMMONWEALTH OF PENNSYLVANIA

DEPARTMENT OF TRANSPORTATION

MONTGOMERY COUNTY

UPPER MERION TOWNSHIP

S.R. 3051 SECTION C22

SIMPLE SPAN P/S CONCRETE NEXT BEAM

OVER NORFOLK-SOUTHERN RAILROAD

GENERAL NOTES & QUANTITIES

RECOMMENDED

2 OF 16

S-31401

REVISIONS

By

Chk'd

App'd

Date

S. R. 3051 FORMERLY L.R. 463

COMMONWEALTH OF PENNSYLVANIA

DEPARTMENT OF TRANSPORTATION

MONTGOMERY COUNTY

UPPER MERION TOWNSHIP

S.R. 3051 SECTION C22

SIMPLE SPAN P/S CONCRETE NEXT BEAM

OVER NORFOLK-SOUTHERN RAILROAD

GENERAL NOTES & QUANTITIES

RECOMMENDED

2 OF 16

S-31401

REVISIONS

By

Chk'd

App'd

Date

S. R. 3051 FORMERLY L.R. 463

COMMONWEALTH OF PENNSYLVANIA

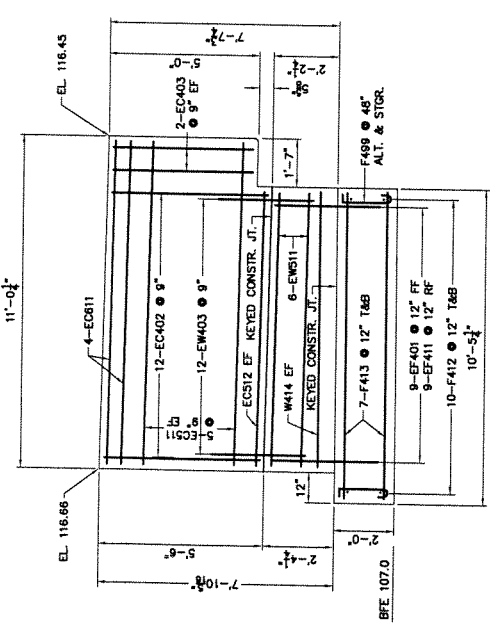
DEPARTMENT OF TRANSPORTATION

MONTGOMERY COUNTY

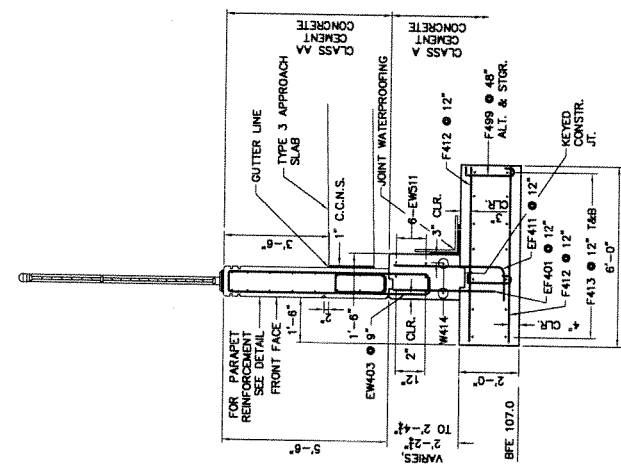
UPPER MERION TOWNSHIP

S.R. 3051 SECTION C22



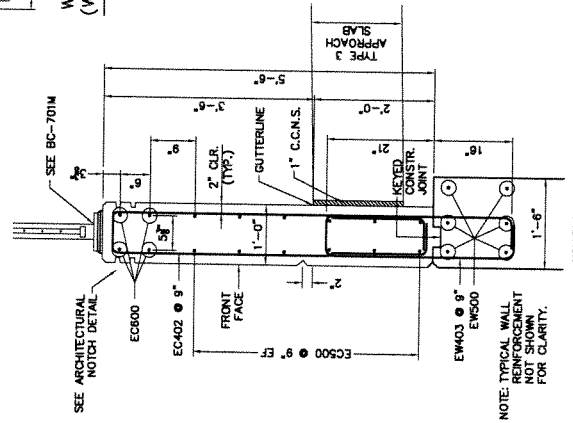


WINGWALL 'A' ELEVATION
SCALE: 3/4" = 1'-0"

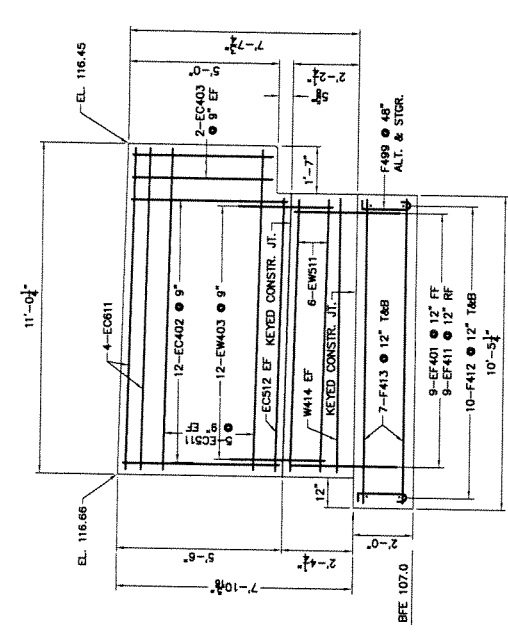


WINGWALL 'A' SECTION
(WINGWALL 'B' SIMILAR)
SCALE: 3/4" = 1'-0"

- FOUNDATION DESIGN SUMMARY
- LOCATION
 - CONTROLLING LIMIT STATE
 - BEARING STAGE
 - FACTORED PRESSURE (KSF)
 - FACTORED RESISTANCE (KSF)
 - CONTROLLING LIMIT STATE
 - BEARING STAGE
 - FACTORED PRESSURE (KSF)
 - FACTORED RESISTANCE (KSF)



PARAPET DETAIL
SCALE: 1/4" = 1'-0"



WINGWALL 'A' ELEVATION
SCALE: 3/4" = 1'-0"

Mark	Description	By	Chk'd	App'd	Date
REVISIONS					

S.R. 3051 FORMERLY L.R. 463
COMMONWEALTH OF PENNSYLVANIA
 DEPARTMENT OF TRANSPORTATION
 MONTGOMERY COUNTY
 UPPER MERION TOWNSHIP
 S.R. 3051 SECTION C22
 SIMPLE SPAN P/S CONCRETE NEXT BEAM
 OVER NORFOLK-SOUTHERN RAILROAD
 ABUTMENT 1 WINGWALLS

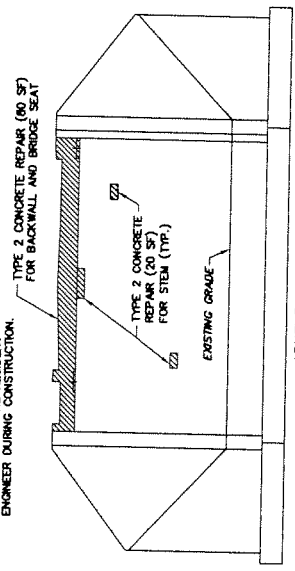


DESIGNED BY: ALP
 CHECKED BY: CES
 DATE: 11/10/16

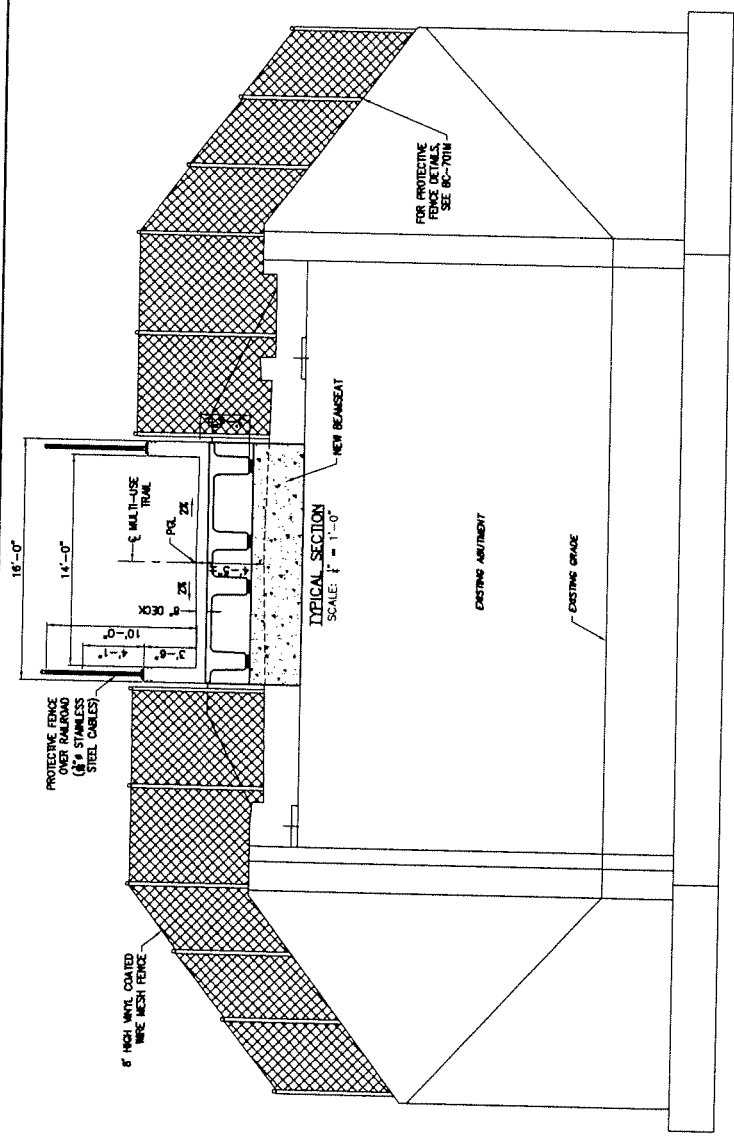


RECOMMENDED
 4 OF 16
 S-31401

NOTE: QUANTITIES ARE APPROXIMATE. ACTUAL QUANTITIES WILL BE DETERMINED BY THE RESIDENT ENGINEER DURING CONSTRUCTION.

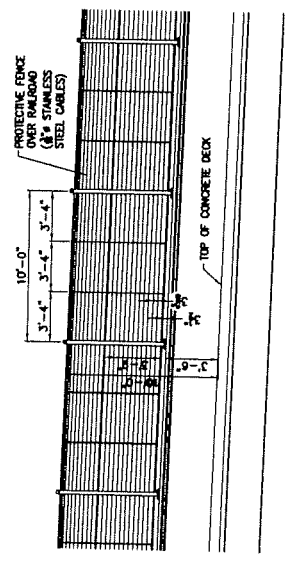


ABUTMENT 1 REPAIRS
(ABUTMENT 2, SIMILAR)
SCALE: 1" = 1'-0"



ABUTMENT 2 ELEVATION
(ABUTMENT 1, SIMILAR)
SCALE: 1" = 1'-0"

NOTE: ARCHITECTURAL TREATMENTS AND AESTHETIC CONSIDERATIONS ARE SUBJECT TO RETIREMENT BASED ON COORDINATION WITH THE NATIONAL PARK SERVICE.



PROTECTIVE FENCE OVER RAILROAD
SCALE: 1" = 1'-0"

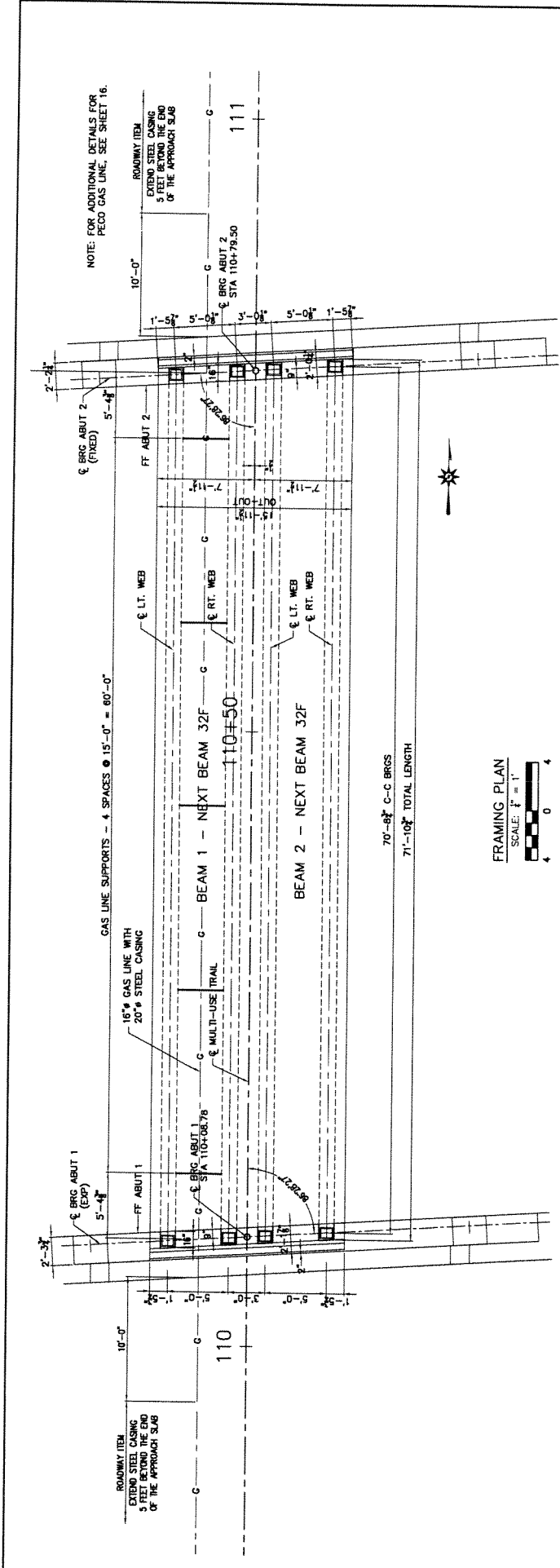


Mark	Description	By	Chk'd	App'd	Date
	REVISIONS				

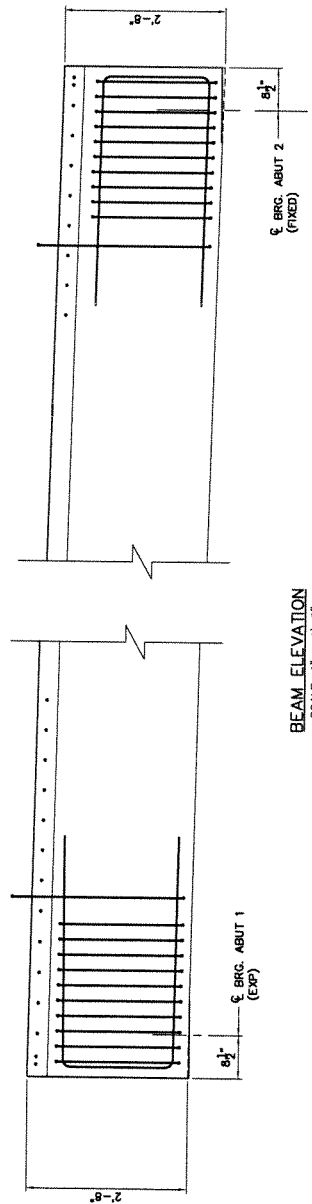
S.R. 3051 FORMERLY I.R. 483
COMMONWEALTH OF PENNSYLVANIA
 DEPARTMENT OF TRANSPORTATION
 MONTGOMERY COUNTY
 UPPER MERION TOWNSHIP
 S.R. 3051 SECTION C22
 SIMPLE SPAN P/S CONCRETE NEXT BEAM
 MULTI-USE TRAIL BRIDGE
 OVER NORFOLK-SOUTHERN RAILROAD
 SUBSTRUCTURE DETAILS

RECOMMENDED 7 OF 16
 S-31401

DESIGNED BY: J. B. BROWN, JR.
 P.L.L. ALF. CES.



NOTE: FOR ADDITIONAL DETAILS FOR PECO GAS LINE, SEE SHEET 16.



Mark	Description	By	Chk'd	App'd	Date
REVISIONS					

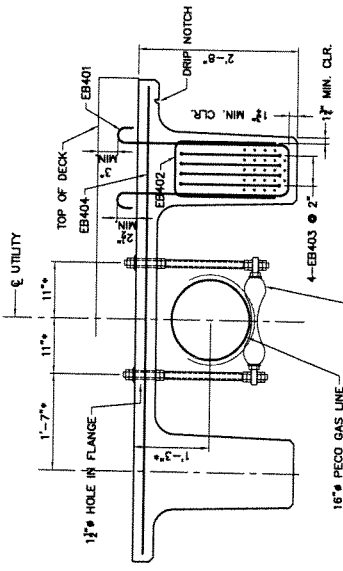
S.R. 3051 FORMERLY I.R. 483
 COMMONWEALTH OF PENNSYLVANIA
 DEPARTMENT OF TRANSPORTATION
 MONTGOMERY COUNTY
 UPPER MERION TOWNSHIP
 S.R. 3051 SECTION C22
 SIMPLE SPAN P/S CONCRETE NEXT BEAM
 OVER NORFOLK-SOUTHERN RAILROAD
 FRAMING PLAN



RECOMMENDED _____
 9 OF 16
 S-31401

DESIGNED BY: ALF
 DRAWN BY: CES
 CHECKED BY: CES

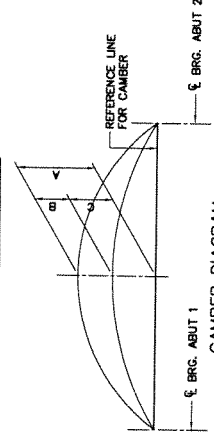
PRESTRESSING DATA	
PRESTRESSING BEAM SIZE	NEXT 32F
INITIAL PRESTRESSING FORCE PER BEAM (KIPS)	1424.3
(1/2" DIA LOW RELAXATION STRANDS, $f_{pu} = 270$ KSI)	
(NUMBER OF STRANDS = 42)	
CONCRETE STRENGTH AT STRAND RELEASE, f_{ci} (PSI)	7,000
CONCRETE STRENGTH AT 28 DAYS, f_c (PSI)	8,000
CC OF STRANDS FROM BOT OF BEAM (IN)	7.79
(BEAM END)	
CC OF STRANDS FROM BOT OF BEAM (IN)	7.72
(1ST OUTLET)	
(2ND STRANDS FROM BOT OF BEAM (IN)	6.85
(2ND OUTLET & MID SPAN)	



BEAM END REINFORCEMENT
SCALE: 1" = 1'-0"

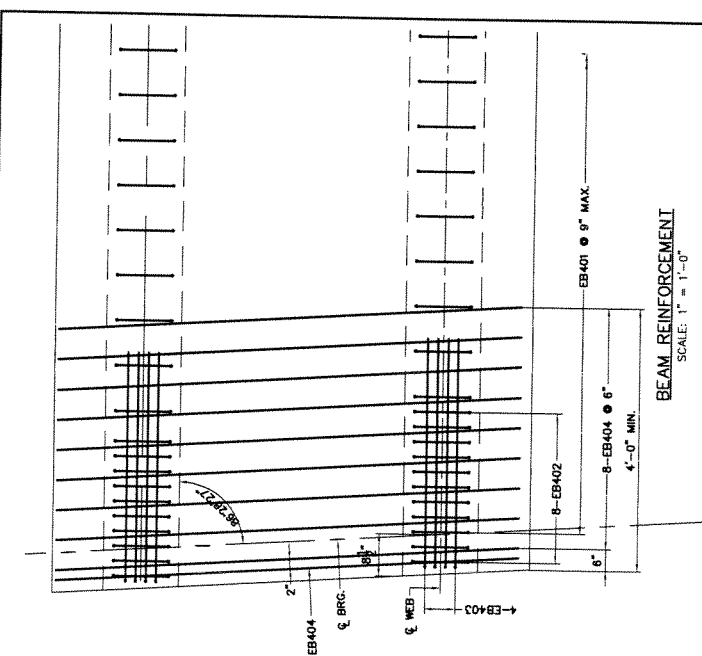
NOTE: FOR ADDITIONAL PECCO GAS LINE DETAILS, SEE SHEET 15.

BEAM CAMBER (IN)	
DESIGNATION	BEAM 1 & 2
A	2.59
B	1.15
C	1.44



CAMBER DIAGRAM

- CAMBER NOTES:**
- A = ESTIMATED PRESTRESS CAMBER LESS DEFLECTION DUE TO DEAD LOAD OF BEAM, TIMES CREEP FACTOR OF 1.6 AND P/S LOSS EQUAL TO 10% (CAMBER TO BE FIELD VERIFIED).
 - B = DEFLECTION DUE TO DEAD LOAD OF SLAB AND PARAPETS.
 - C = A - B = FINAL NET CAMBER
 - VARY THICKNESS OF CONCRETE HAUNCH TO COMPENSATE FOR ANY INACCURACIES IN BEAM CAMBER.
 - A, B AND C ARE THEORETICAL VALUES AND MAY VARY WITH ACTUAL CONCRETE STRENGTH, VARIOUS PRESTRESSING CONDITIONS, CREEP FACTOR AND P/S LOSSES. CONTRACTOR SHOULD VERIFY THESE VALUES IN THE FIELD.



BEAM REINFORCEMENT
SCALE: 1" = 1'-0"

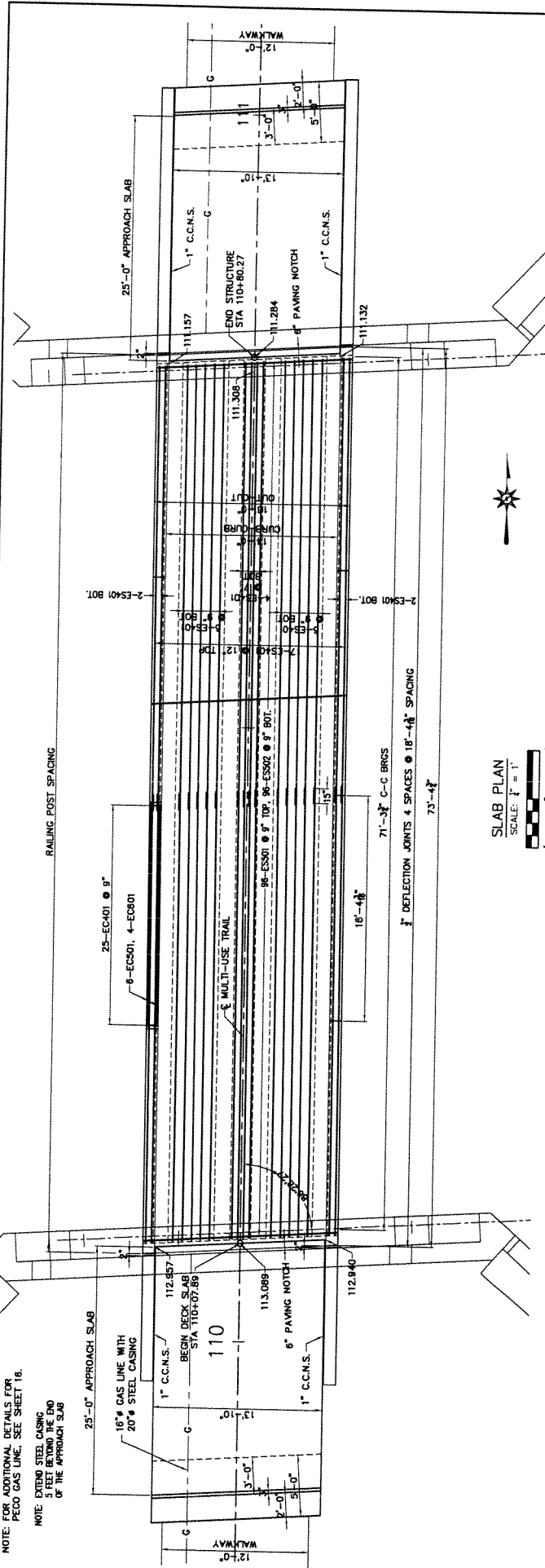
Mark	Description	By	Chk'd	App'd	Date
REVISIONS					

S.R. 3051 FORMERLY I.R. 403
COMMONWEALTH OF PENNSYLVANIA
 DEPARTMENT OF TRANSPORTATION
 MONTGOMERY COUNTY
 UPPER MERION TOWNSHIP
 S.R. 3051 SECTION C22
 SIMPLE SPAN P/S CONCRETE NEXT BEAM
 OVER NORFOLK-SOUTHERN RAILROAD
 MULTI-USE TRAIL BRIDGE
 BEAM DETAILS

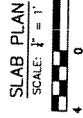
RECOMMENDED 10 OF 16
 S-31401



NOTE: FOR ADDITIONAL DETAILS FOR
PECO GAS LINE, SEE SHEET 16.
NOTE: EXTEND STEEL CASING
5 FEET BEYOND THE END
OF THE APPROACH SLAB



RAILING POST SPACING



Mark	Description	By	Chk'd	App'd	Date
	REVISIONS				

S.R. 3051 FORMERLY L.R. 463
COMMONWEALTH OF PENNSYLVANIA
DEPARTMENT OF TRANSPORTATION
MONTGOMERY COUNTY
UPPER MERION TOWNSHIP
S.R. 3051 SECTION C22
SIMPLE SPAN P/S CONCRETE NEXT BEAM
MULTI-USE TRAIL BRIDGE
OVER NORFOLK-SOUTHERN RAILROAD
SLAB PLAN

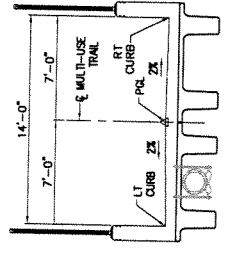


RECOMMENDED
13 OF 16
S-31401

DESIGNED BY: DRAWN BY: CHECKED BY:
R.L. ALF CES

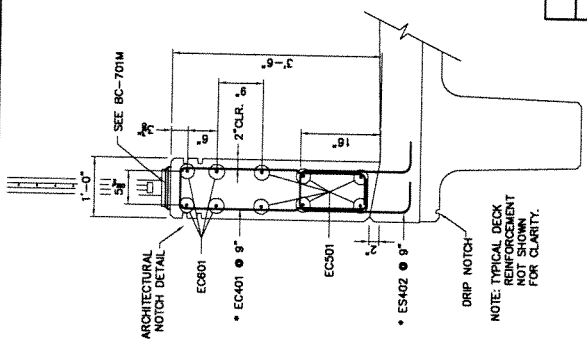
BRIDGE DECK ELEVATIONS

STATION	LT CURB	PGL	RT CURB	DESCRIPTION
11006.67	112.97	113.11	113.10	BEGIN DECK
11007.11				BEGIN DECK
11007.55	112.91	113.05	112.96	BEGIN DECK
11010	112.69	112.83	112.69	
11030	112.46	112.60	112.46	
11040	112.22	112.36	112.22	
11050	111.95	112.09	111.85	
11060	111.67	111.81	111.67	
11070	111.40	111.54	111.40	
11079.08	111.15	111.29	111.28	END DECK
11079.52				END DECK
11079.96	111.26	111.12	111.12	END DECK

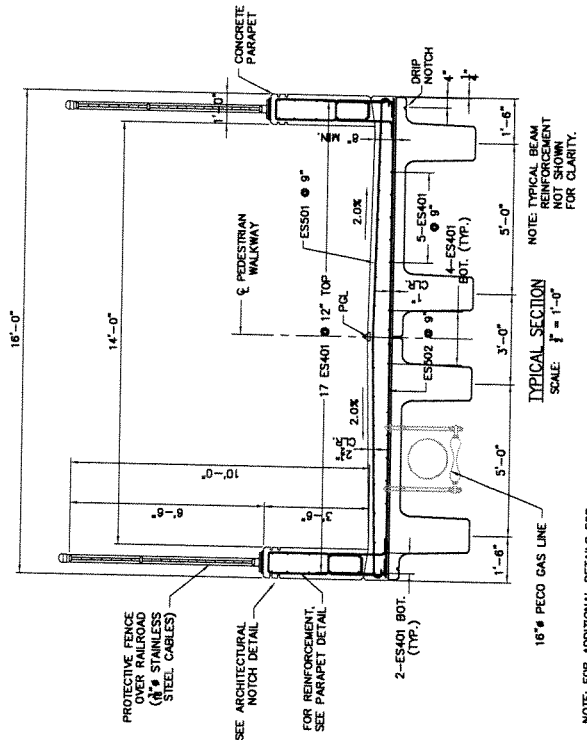


FINISHED DECK ELEVATIONS OVER CL BEAM

LOCATION	BEAM 1			BEAM 2		
	OVER LT WEB	OVER RT WEB	OVER RT WEB	OVER LT WEB	OVER RT WEB	OVER RT WEB
CL BRG ABUT 1	11006.38	112.85	11008.69	113.04	11008.87	113.04
O.L.	11021.52	112.89	11022.63	112.74	11023.09	112.74
O.L.	10928.66	112.83	10928.91	112.74	10929.09	112.74
O.L.	10936.67	112.83	10936.91	112.74	10937.16	112.74
O.L.	10943.74	112.83	10944.05	112.74	10944.23	112.74
O.L.	10950.81	112.83	10951.12	112.63	10951.37	112.63
O.L.	11057.86	111.74	11058.19	111.63	11058.37	111.63
O.L.	11064.96	111.55	11065.27	111.44	11065.45	111.44
O.L.	11072.03	111.35	11072.34	111.44	11072.52	111.44
CL BRG ABUT 2	11079.10	111.16	11079.41	111.25	11079.59	111.24



PARAPET DETAIL
SCALE: 1"=1'-0"



NOTE: FOR ADDITIONAL DETAILS FOR PECO GAS LINE, SEE SHEET 16.

BEARING TABLE

LOCATION	MARK	TYPE	NEOPRENE HARNESS (SHORE A)	TOTAL NO. REQ'D	SERVICE CAPACITY/TOTAL (K)	DIMENSIONS			SHAPE FACTOR	NET AREA (IN ²)	INTERIOR LAYERS	TOTAL PAD THICKNESS, T (IN)		
						DL (K)	LL (K)	LL (K)						
ABUT 1	E-1	EXP	504.5 DURO	4	61.31	48.97	11.34	11	9	1.125	6.60	99.0	5	2.1034
ABUT 2	F-2	FIX	504.5 DURO	4	61.31	48.97	11.34	11	9	1.125	6.60	99.0	5	2.1034

REVISIONS

Mark	Description	By	Chk'd	App'd	Date

S.R. 3051 FORMERLY L.R. 463
COMMONWEALTH OF PENNSYLVANIA
DEPARTMENT OF TRANSPORTATION

MONTGOMERY COUNTY
UPPER MERION TOWNSHIP
S.R. 3051 SECTION C22
SIMPLE SPAN P/S CONCRETE NEXT BEAM
OVER NORFOLK-SOUTHERN RAILROAD
MULTI-USE TRAIL BRIDGE
SLAB DETAILS

RECOMMENDED
14 OF 16
S-31401



DESIGNED BY: DRAWN BY: CHECKED BY:
RL ALF CES

Exhibit B

Trooper Road Bridge Project

Upper Merion Township

Montgomery County

The public utilities, municipalities, counties, corporations, and property owners concerned in, or affected by, the proposed crossing alterations are:

MARK CHAPPELL PE CHIEF
ROW & UTILITY DIVISION
PENNDOT BUREAU OF DESIGN
PO BOX 3362
HARRISBURG PA 17105-3362

GINA M. D'ALFONSO ATTORNEY
DEPARTMENT OF TRANSPORTATION
OFFICE OF CHIEF COUNSEL 9TH FLOOR
PO BOX 8212
HARRISBURG PA 17105-8212

KEVIN COCHRAN
RCN TELECOM SERVICES, INC.
3 RAYMOND DRIVE
HAVERTOWN PA 19083

WILLIAM L QUINN
SPECTRA ENERGY
TEXAS EASTERN TRANSMISSION LP
560 POTTSTOWN PIKE
CHESTER SPRINGS PA 19425

ERIC J MEISSNER
QWEST COMMUNICATIONS
2011 HARTEL STREET
LEVITTOWN PA 19057

LESTER C TOASO
PENNDOT DISTRICT 6-0
ATTN: SONNY BOCCHINFUSO
7000 GEERDES BOULEVARD
KING OF PRUSSIA PA 19406

THOMAS CINAGLIA, DIR OF PUBLIC WKS
WEST NORRITON TOWNSHIP
1630 WEST MARSHALL STREET
JEFFERSONVILLE PA 19403

J N CARTER, CHIEF ENGINEER
NORFOLK SOUTHERN RAILWAY CO
BRIDGES & STRUCTURES DEPT, BOX142
1200 PEACHTREE STREET NE
ATLANTA GA 30309-3579
DEAN BOYERS

VERIZON BUSINESS
ATTN: INVESTIGATIONS
2400 NORTH GLENVILLE DRIVE
RICHARDSON TX 75082

FRANCES P ORTH, ESQUIRE
AQUA PENNSYLVANIA INC
762 WEST LANCASTER AVENUE
BRYN MAWR PA 19010-3489

SHAWN SCANLON - NETWORK SUPERVISOR
PA-AMERICAN WATER CO
171 WEST JOHNSON HIGHWAY
NORRISTOWN PA 19404-0871

MIKE CALDWELL, SUPERINTENDENT
VALLEY FORGE NATIONAL HISTORIC PARK
1400 NORTH OUTER LINE DRIVE
KING OF PRUSSIA PA 19406-1009

STEVE ALTOBELLI
AT&T LOCAL SERVICES
c/o TREC GROUP, INC
536 BALTIMORE PIKE
SPRINGFIELD PA 19064

MICHAEL STOCKER, PROJECT MGR
COMCAST CABLE COMMUNICATIONS
190 SHOEMAKER ROAD
POTTSTOWN PA 19464

CHRIS RICCIUTI
ABOVENET COMMUNICATIONS INC
170 ROBBINS ROAD
DOWNTOWN PA 19335

DEIRDRE JOHNS
VERIZON PENNSYLVANIA INC
180 SHEREE BOULEVARD, SUITE 2100
EXTON PA 19341

SCOTT DREILING PROJECT MANAGER
XO COMMUNICATIONS
1220 BROADCASTING ROAD SUITE 201
WYOMISSING PA 19610

RANDAL S NOE, ESQUIRE
NORFOLK SOUTHERN CORPORATION
THREE COMMERCIAL PLACE
NORFOLK VA 23510
JAMES P MELIA, ESQUIRE

KIRKPATRICK, LOCKHART, NICHOLSON & GRAHAM
17 NORTH SECOND STREET - 18TH FLOOR
HARRISBURG PA 17101-1507

TRACY HOFFMAN
SUNOCO PIPELINE LP – ONE CALL DEPT
525 FRITZTOWN ROAD
SINKING SPRING PA 19608

RICHARD RICKETTS
WILLIAMS GAS PIPELINE - TRANSCO
99 FARBER ROAD
PRINCETON NJ 08540

RONALD WAGENMANN, MANAGER
UPPER MERION TOWNSHIP
175 WEST VALLEY FORGE ROAD
KING OF PRUSSIA PA 19406

LEO BAGLEY
MONTGOMERY CO PLANNING COMMISSION
1 MONTGOMERY PLAZA - SUITE 201
PO BOX 311
NORRISTOWN PA 19404-0311

JOE PANKUCH, ENGINEER DIR
SUNESYS LLC
185 TITUS AVENUE
WARRINGTON PA 18976

JON SCHMIDT, PE
AECOM
1700 MARKET STREET, SUITE 1600
PHILADELPHIA, PA 19103