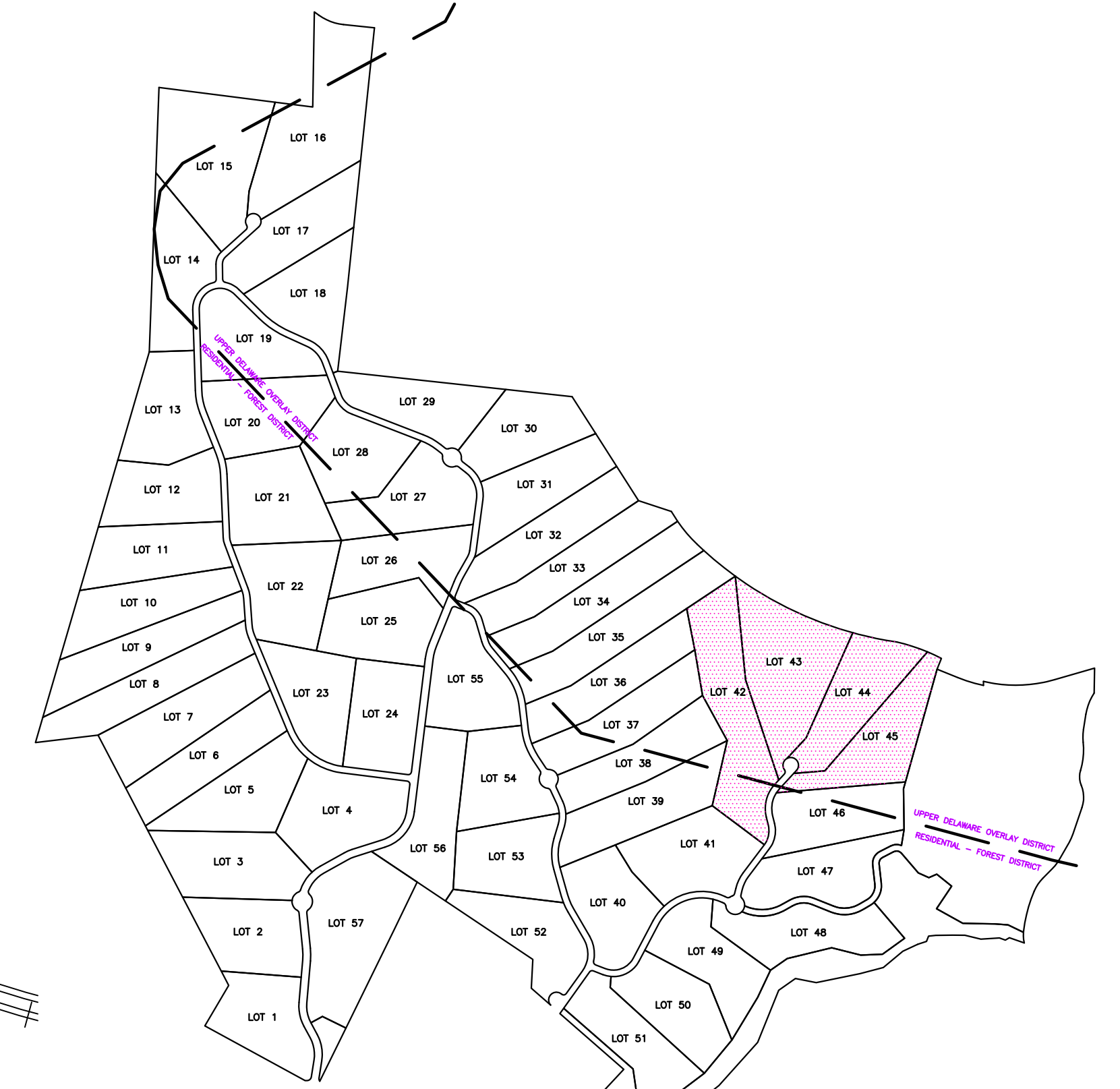
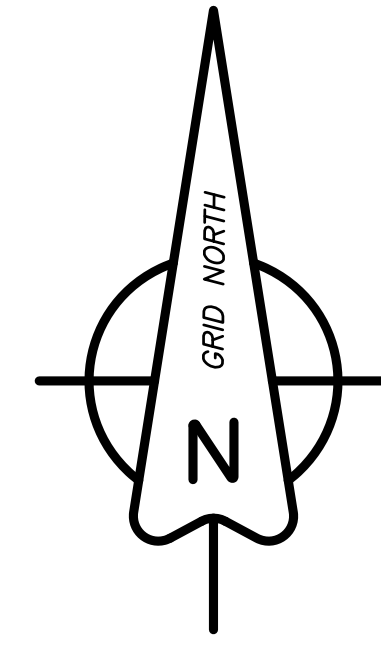


CURVE	RADIUS	DELTA ANGLE	ARC LENGTH	CHORD BEARING	CHORD LENGTH
C86	275.00'	56°35'03"	271.58'	S 14°29'30" W	260.68'
C87	180.00'	50°44'24"	159.40'	S 11°34'10" W	154.25'
C88	60.00'	98°30'23"	103.16'	S 12°12'04" W	90.91'
C89	25.00'	79°50'10"	34.83'	S 02°51'57" W	32.08'
C90	2826.50'	20°31'25"	1012.47'	S 64°17'35" E	1007.06'
C91	2826.50'	07°03'51"	348.49'	S 78°05'14" E	348.27'
C92	1432.40'	09°56'00"	248.33'	S 72°13'39" E	248.02'
C93	60.00'	161°19'45"	168.94'	N 37°52'52" W	118.41'
C94	1432.40'	04°45'30"	118.96'	S 64°52'57" E	118.92'
C95	225.00'	09°48'32"	38.52'	N 37°52'46" E	38.47'



KEY MAP
SCALE: 1" = 1000'

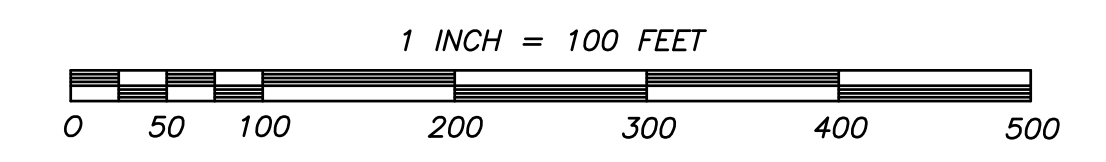
SOILS LEGEND:
USDA Natural Resources Conservation Service

7B Shohola-Edgemere complex, 0 to 8 percent slopes, very rubbly
 9B Craigsville-Wyoming complex, 0 to 8 percent slopes, extremely stony
 11A Edgemere extremely stony loam, 0 to 3 percent slopes, very rubbly
 19B Morris very channery loam, 0 to 8 percent slopes, very stony
 20 Freetown mucky peat
 25B Wurlisboro channery fine sandy loam, 0 to 8 percent slopes, stony
 25C Wurlisboro channery fine sandy loam, 8 to 15 percent slopes, stony
 30B Wurlisboro stony fine sandy loam, 0 to 8 percent slopes, extremely stony
 30C Wurlisboro stony fine sandy loam, 8 to 15 percent slopes, extremely stony
 30D Wurlisboro stony fine sandy loam, 15 to 25 percent slopes, extremely stony
 38B Swarlswood stony fine sandy loam, 0 to 8 percent slopes, extremely stony
 97B Lordstown very channery loam, 3 to 8 percent slopes, very stony
 97C Lordstown very channery loam, 8 to 15 percent slopes, very stony
 111B Edgemere-Shohola complex, 3 to 15 percent slopes, very rubbly
 239C Quauga very stony loam, 8 to 15 percent slopes, extremely bouldery
 240F Quauga-Arnot-Rock outcrop complex, 20 to 60 percent slopes, very rubbly
 402C Arnot very channery loam, 3 to 15 percent slopes, very rocky
 897B Lordstown-Swarlswood complex, 0 to 8 percent slopes, extremely stony

LEGEND

- 1/2" rebar set (unless otherwise noted)
- ⊕ Utility Pole
- Percolation test
- ▲ Deep Test Pit
- ▭ Stonewall
- Wetlands
- ⊕ Potential Well Site
- ⊕ Soils Type Symbol
- Mapped Soils Boundary

PRELIMINARY PLAN



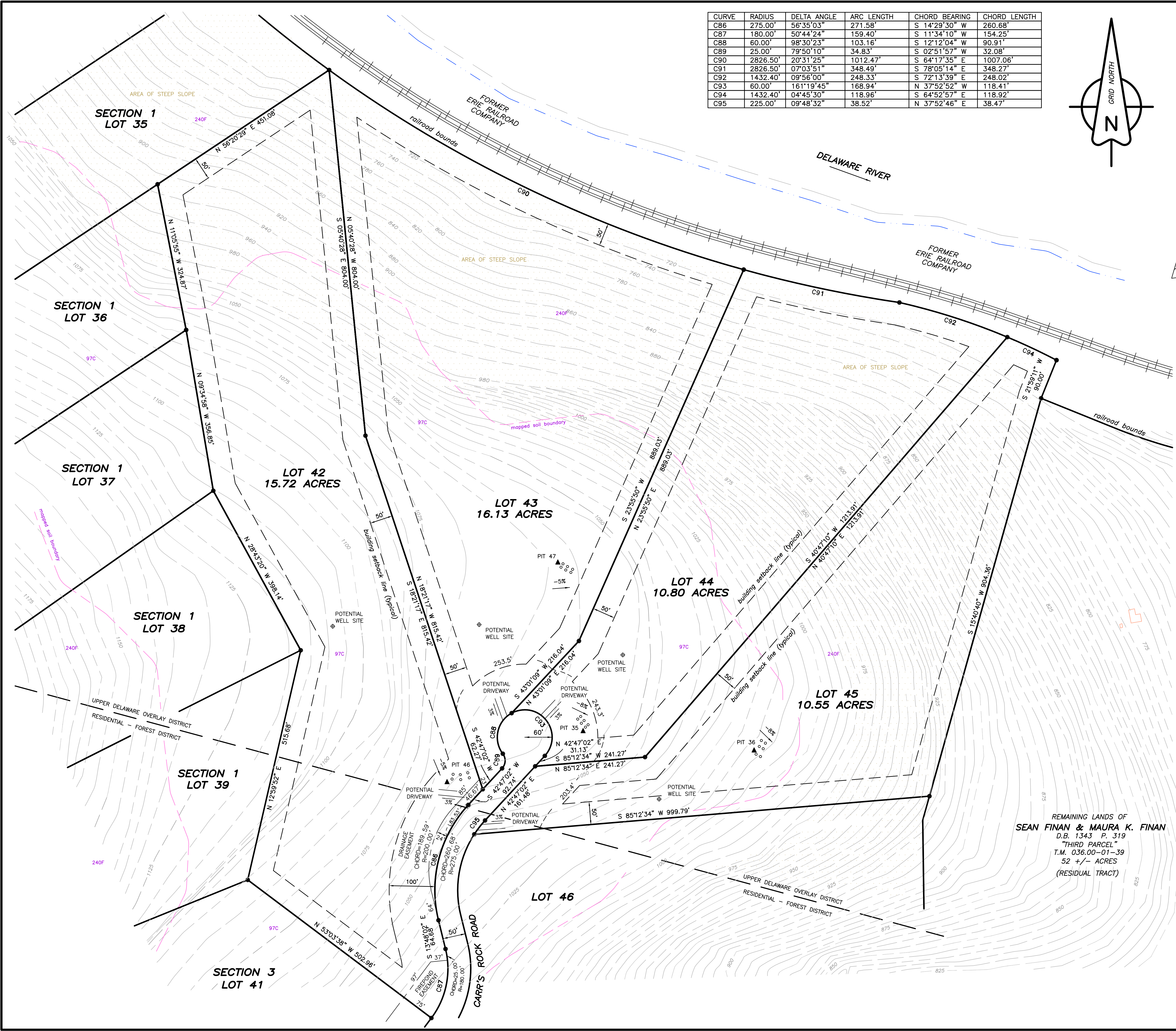
SUBDIVISION SURVEY OF SECTION 3
QUARRY HEIGHTS AT PARKERS GLEN
 SHOHOLA TOWNSHIP, PIKE COUNTY, PA.
 SEPTEMBER 5, 2008

SHEET 13

DATE	REVISIONS
1/6/09	Lots 42-45
01/12/08	potential driveway location
11/2/09	show drainage easement

PACKER ASSOCIATES, INC.
 GARY PACKER - PROFESSIONAL LAND SURVEYOR
 148 HOLGATE ROAD, HONESDALE, PA 18431
 TELEPHONE: (570) 224-4300

DRAWN: MKP CHECKED: MKP APRVD: GCP MAP NO. 06-PK-55



REMAINING LANDS OF
SEAN FINAN & MAURA K. FINAN
 D.B. 1343 P. 319
 "THIRD PARCEL"
 T.M. 036.00-01-39
 52 +/- ACRES
 (RESIDUAL TRACT)