

KEY MAP
SCALE: 1" = 1000'

WILLIAM MARK MOODY & PATRICIA S. LANTIS
D.B. 597 P. 207
T.M. 28.00-02-57

WILLIAM MARK MOODY & PATRICIA S. LANTIS
D.B. 597 P. 207
T.M. 28.00-02-57

HAPPY HOLLOW OWNERS ASSOCIATION, INC.
D.B. 955 P. 159
T.M. 28.04-01-62.1

PETRA H. KLUGE
D.B. 2092 P. 1012
T.M. 28.04-01-63

GUENTER K. & ROSEMARIE ERICH
D.B. 1452 P. 193
T.M. 28.00-02-55.1

GUENTER K. & ROSEMARIE ERICH
D.B. 1452 P. 193
T.M. 28.00-02-55

EDWARD F. & PARTICE L. MADAYA
D.B. 1406 P. 148
T.M. 28.00-02-55

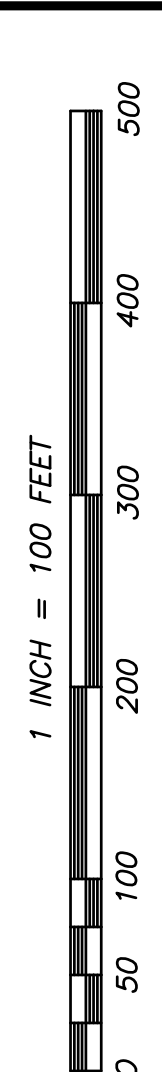
JOANNE RUNO & RICHARD SENTIPAL
D.B. 2031 P. 834
T.M. 28.00-02-53

MONICA TRUJMEES, MARGA KALLAS, & MARIKA CHASSE
D.B. 1860 P. 1924
T.M. 36.00-01-40

- LEGEND**
- 1/2" rebar set (unless otherwise noted)
 - Utility Pole
 - ⊕ Percolation test
 - ▲ Deep test pit
 - ⊕ Wetlands
 - ⊕ Potential Well Site
 - ⊕ Soils Type Symbol
 - ⊕ Mapped Soils Boundary

SOILS LEGEND:
USDA Natural Resources Conservation Service

- 7B Shoklo-Eggers complex, 0 to 8 percent slopes, very rubby
- 9B Cragville-Wyoming complex, 0 to 8 percent slopes, extremely stony
- 11A Edgmere extremely stony loam, 0 to 3 percent slopes, very rubby
- 20B Parris very channery loam, 0 to 3 percent slopes, very stony
- 25B Warrisboro channery fine sandy loam, 0 to 8 percent slopes, stony
- 25C Warrisboro channery fine sandy loam, 8 to 15 percent slopes, stony
- 30C Warrisboro stony fine sandy loam, 8 to 15 percent slopes, extremely stony
- 30D Warrisboro stony fine sandy loam, 15 to 25 percent slopes, extremely stony
- 97B Londstown very channery loam, 8 to 15 percent slopes, very stony
- 97C Londstown very channery loam, 8 to 15 percent slopes, very stony
- 11E Edgmere-Shonola complex, 3 to 15 percent slopes, very rubby
- 21F Edgmere-Shonola complex, 3 to 15 percent slopes, very rubby
- 240F Oquaga-Arnot-Rock outcrop complex, 20 to 60 percent slopes, very rubby
- 402C Arnot very channery loam, 3 to 15 percent slopes, very rocky
- 402D Arnot very channery loam, 3 to 15 percent slopes, very rocky
- 402E Arnot very channery loam, 3 to 15 percent slopes, very rocky
- 402F Arnot very channery loam, 3 to 15 percent slopes, very rocky
- 402G Arnot very channery loam, 3 to 15 percent slopes, very rocky
- 402H Arnot very channery loam, 3 to 15 percent slopes, very rocky
- 402I Arnot very channery loam, 3 to 15 percent slopes, very rocky
- 402J Arnot very channery loam, 3 to 15 percent slopes, very rocky
- 402K Arnot very channery loam, 3 to 15 percent slopes, very rocky
- 402L Arnot very channery loam, 3 to 15 percent slopes, very rocky
- 402M Arnot very channery loam, 3 to 15 percent slopes, very rocky
- 402N Arnot very channery loam, 3 to 15 percent slopes, very rocky
- 402O Arnot very channery loam, 3 to 15 percent slopes, very rocky
- 402P Arnot very channery loam, 3 to 15 percent slopes, very rocky
- 402Q Arnot very channery loam, 3 to 15 percent slopes, very rocky
- 402R Arnot very channery loam, 3 to 15 percent slopes, very rocky
- 402S Arnot very channery loam, 3 to 15 percent slopes, very rocky
- 402T Arnot very channery loam, 3 to 15 percent slopes, very rocky
- 402U Arnot very channery loam, 3 to 15 percent slopes, very rocky
- 402V Arnot very channery loam, 3 to 15 percent slopes, very rocky
- 402W Arnot very channery loam, 3 to 15 percent slopes, very rocky
- 402X Arnot very channery loam, 3 to 15 percent slopes, very rocky
- 402Y Arnot very channery loam, 3 to 15 percent slopes, very rocky
- 402Z Arnot very channery loam, 3 to 15 percent slopes, very rocky



PRELIMINARY PLAN

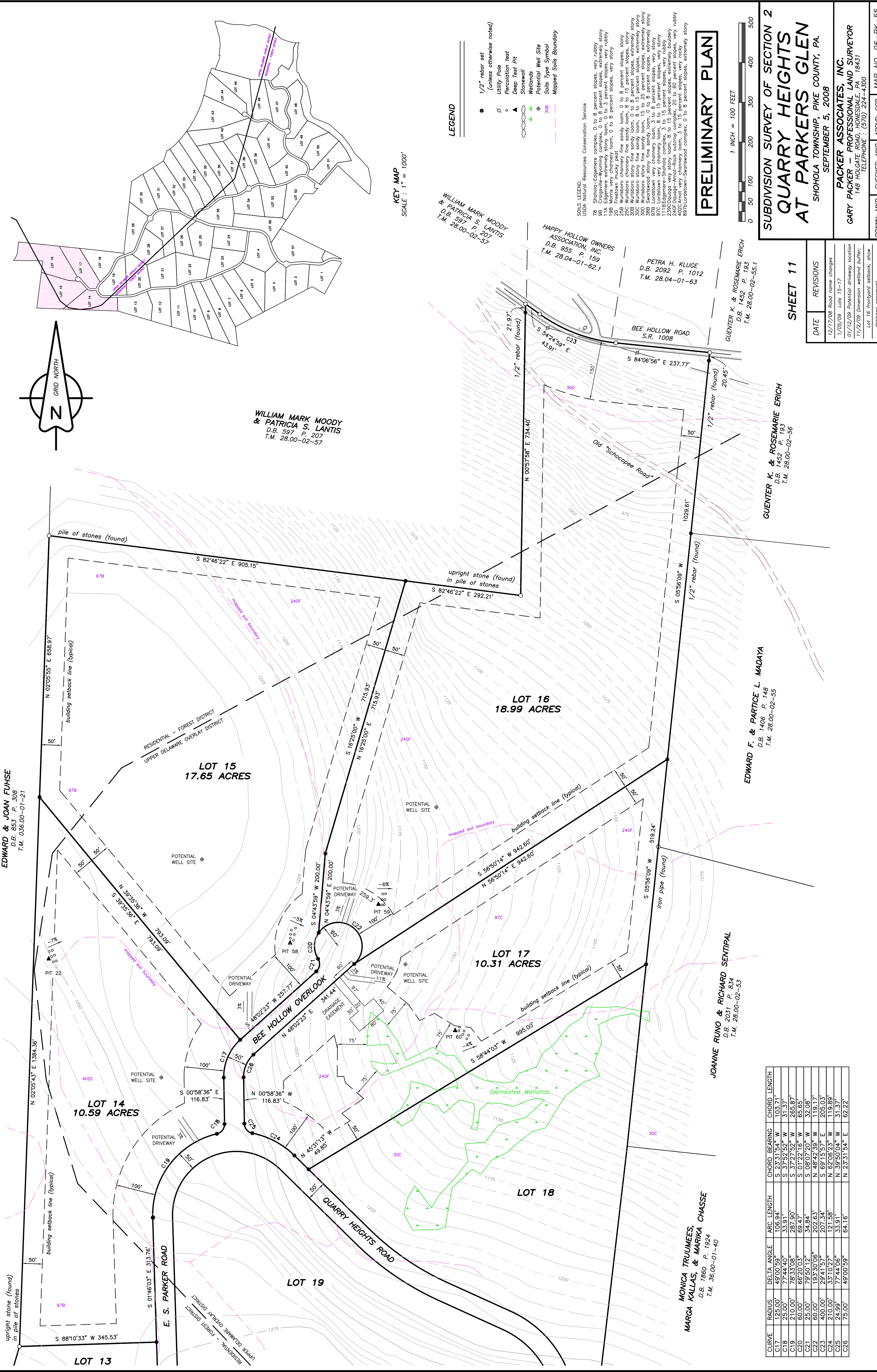
**SUBDIVISION SURVEY OF SECTION 2
QUARRY HEIGHTS
AT PARKERS GLEN**
SHOHOLA TOWNSHIP, PIKE COUNTY, PA.
SEPTEMBER 5, 2008

PACKER ASSOCIATES, INC.
GARY PACKER — PROFESSIONAL LAND SURVEYOR
148 HOLLGATE ROAD, HONESDALE, PA. 18431
TELEPHONE : (717) 224-4300

DRAWN: MKP CHECKED: MKP APPRVD: GCP MAP NO. 06-PK-55

SHEET 11

DATE	REVISIONS
12/17/08	Road name changes
1/09/09	Lots 15-17
01/12/09	Potential driveway location
11/2/09	Dimension wetland buffer, Lot 16 frontyard setback, snow storage assessment



CURVE	RADIUS	DELTA ANGLE	ARC LENGTH	CHORD BEARING	CHORD LENGTH
C17	125.00'	49°00'59"	106.94'	S 23°31'54" W	103.71'
C18	25.00'	77°44'40"	33.91'	S 37°52'52" W	31.37'
C19	210.00'	78°33'08"	287.90'	S 37°27'52" W	265.87'
C20	60.00'	66°20'03"	69.47'	S 01°22'16" W	65.65'
C21	25.00'	79°50'12"	34.84'	S 08°07'20" W	32.08'
C22	60.00'	193°30'06"	202.63'	N 48°42'39" W	119.17'
C23	400.00'	29°41'57"	121.58'	S 69°15'57" E	205.03'
C24	210.00'	33°10'27"	33.91'	N 62°06'23" W	119.89'
C25	24.99'	77°44'06"	33.91'	N 39°50'04" W	31.37'
C26	75.00'	49°00'59"	64.16'	N 23°31'54" E	62.22'