

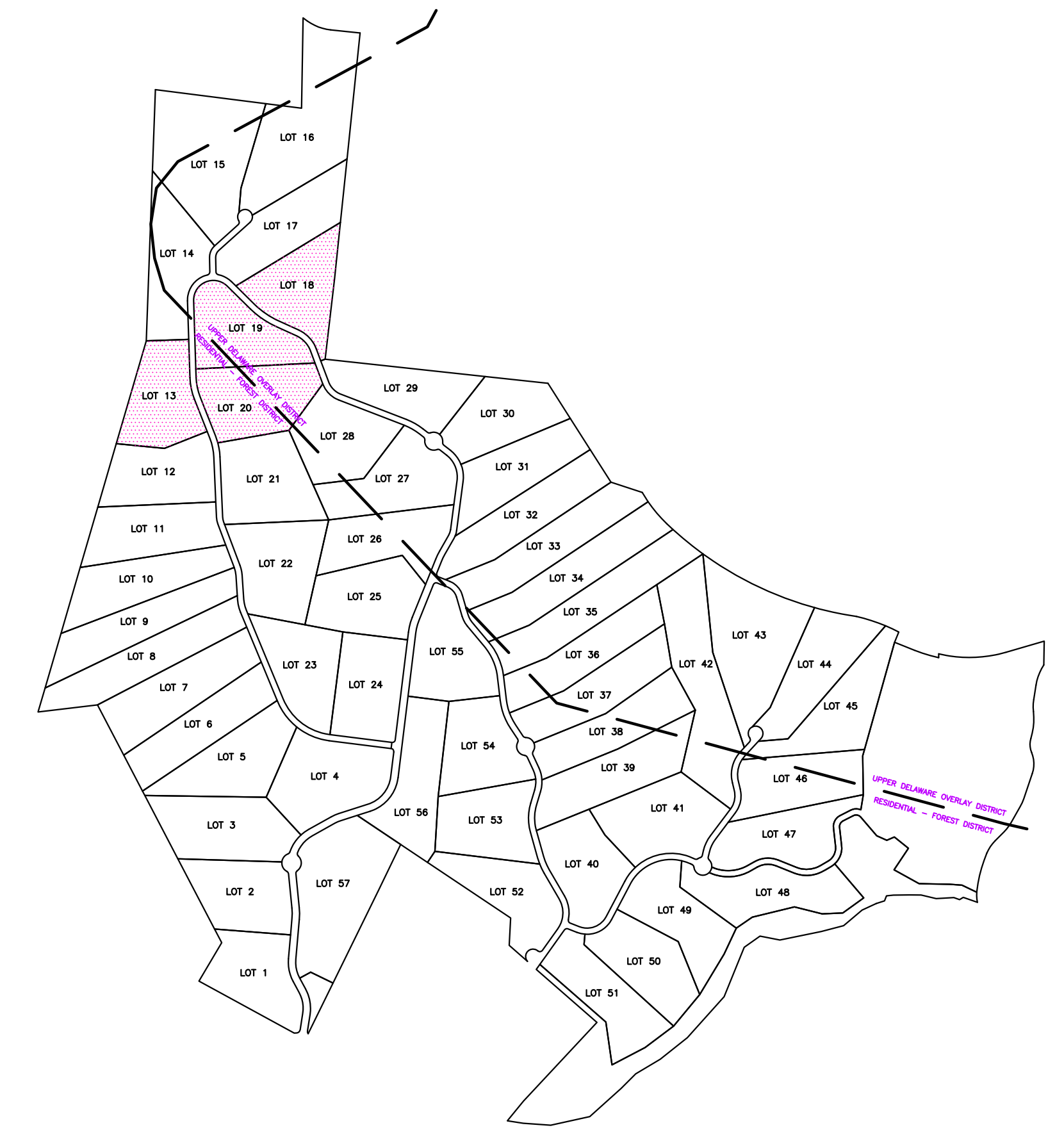
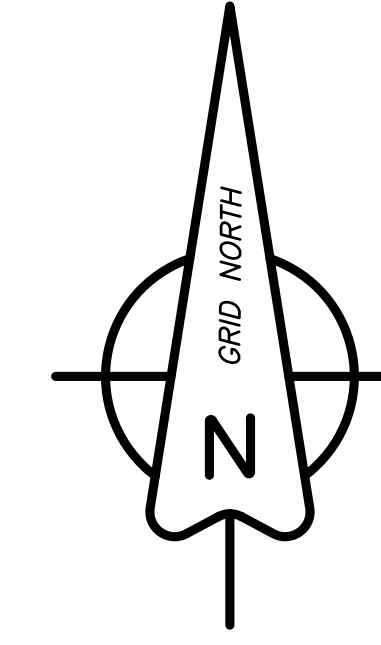
SOILS LEGEND:
USDA Natural Resources Conservation Service

- 7B Shohola-Edgemere complex, 0 to 8 percent slopes, very rubbly
- 9B Craigsville-Wyoming complex, 0 to 8 percent slopes, extremely stony
- 11A Edgemere extremely stony loam, 0 to 3 percent slopes, very rubbly
- 19B Morris very channery loam, 0 to 8 percent slopes, very stony
- 20 Freetown mucky peat
- 25B Wurtsboro channery fine sandy loam, 0 to 8 percent slopes, stony
- 25C Wurtsboro channery fine sandy loam, 8 to 15 percent slopes, stony
- 30B Wurtsboro stony fine sandy loam, 0 to 8 percent slopes, extremely stony
- 30C Wurtsboro stony fine sandy loam, 8 to 15 percent slopes, extremely stony
- 30D Wurtsboro stony fine sandy loam, 15 to 25 percent slopes, extremely stony
- 38B Swartswood stony fine sandy loam, 0 to 8 percent slopes, extremely stony
- 97B Lordstown very channery loam, 3 to 8 percent slopes, very stony
- 97C Lordstown very channery loam, 8 to 15 percent slopes, very stony
- 111B Edgemere-Shohola complex, 3 to 15 percent slopes, very rubbly
- 239C Quaga very stony loam, 8 to 15 percent slopes, extremely bouldery
- 240F Quaga-Arnot-Rock outcrop complex, 20 to 60 percent slopes, very rubbly
- 402C Arnot very channery loam, 3 to 15 percent slopes, very rocky
- 897B Lordstown-Swartswood complex, 0 to 8 percent slopes, extremely stony

EDWARD & JOAN FUHSE
D.B. 863 P. 308
T.M. 036.00-01-21

JOANNE RUNO & RICHARD SENTIPAL
D.B. 2031 P. 834
T.M. 28.00-02-53

MONICA TRUINEES,
KALLAS, & MARIKA CHASSE
D.B. 1860 P. 1924
T.M. 36.00-01-40



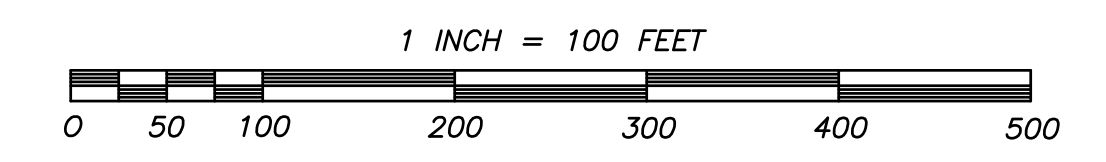
KEY MAP
SCALE: 1" = 1000'

CURVE	RADIUS	DELTA ANGLE	ARC LENGTH	CHORD BEARING	CHORD LENGTH
C21	525.00'	19°44'11"	180.84'	S 11°40'41" E	179.95'
C30	275.00'	45°05'21"	216.41'	N 43°01'27" W	210.87'
C31	675.00'	20°02'54"	236.19'	N 55°32'40" W	234.99'
C33	159.99'	136°17'41"	380.59'	N 66°20'09" E	296.99'
C34	725.00'	20°02'54"	253.69'	S 55°32'40" E	252.39'
C35	225.00'	45°05'21"	177.06'	S 43°01'27" E	172.53'
C36	525.00'	06°23'36"	58.58'	N 18°20'58" W	58.55'
C37	475.00'	19°44'11"	163.62'	N 11°40'41" W	162.81'

LEGEND

- 1/2" rebar set (unless otherwise noted)
- ⊕ Utility Pole
- Percolation test
- ▲ Deep Test Pit
- Stone Wall
- Wetlands
- ⊕ Potential Well Site
- 30B Soils Type Symbol
- - - Mapped Soils Boundary

PRELIMINARY PLAN



SUBDIVISION SURVEY OF SECTION 2
QUARRY HEIGHTS AT PARKERS GLEN
SHOHOLA TOWNSHIP, PIKE COUNTY, PA.
SEPTEMBER 5, 2008

SHEET 10

DATE	REVISIONS
12/17/08	Road name changes
01/12/09	Potential driveway location
11/2/09	Dimension wetland buffer; show drainage easement

PACKER ASSOCIATES, INC.
GARY PACKER — PROFESSIONAL LAND SURVEYOR
148 HOLLGATE ROAD, HONESDALE, PA 18431
TELEPHONE : (570) 224-4300

DRAWN: MKP CHECKED: MKP APRVD: GCP MAP NO. 06-PK-55

