

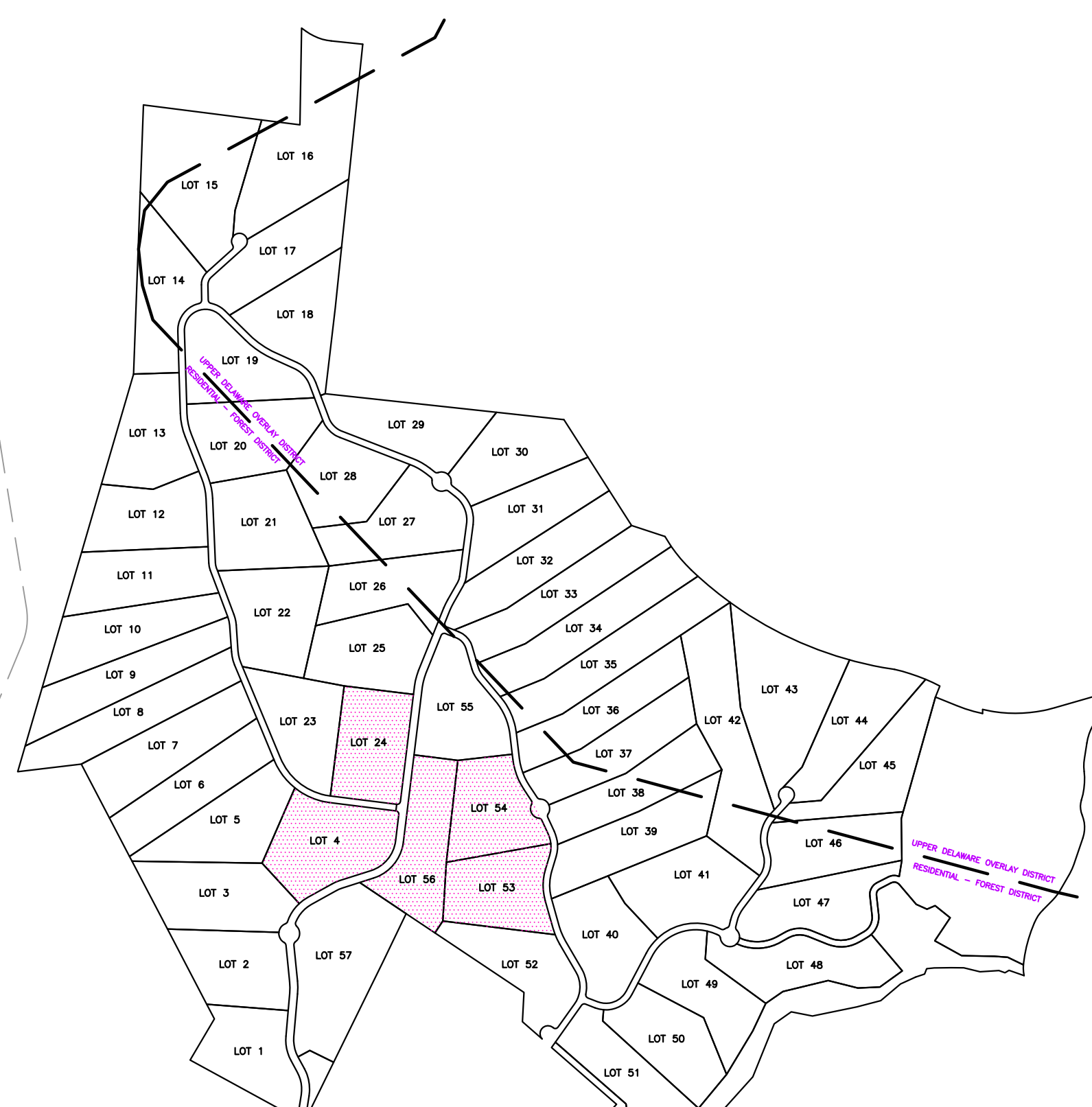
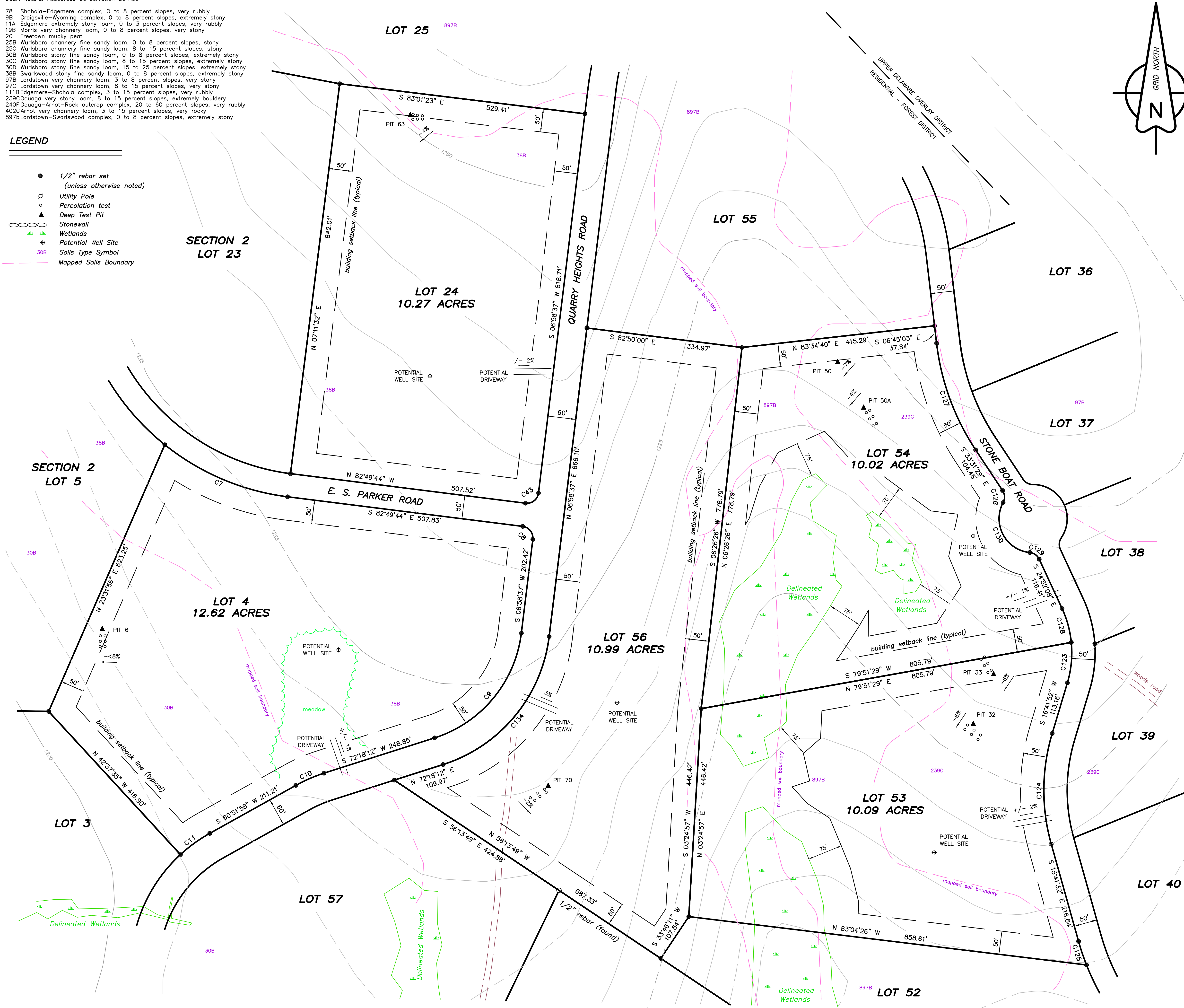
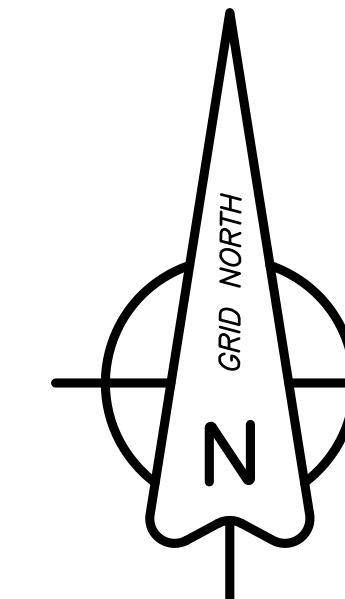
SOILS LEGEND:  
USDA Natural Resources Conservation Service

- 78 Shohola-Edgemere complex, 0 to 8 percent slopes, very rubbly
- 9B Craigsville-Wyoming complex, 0 to 8 percent slopes, extremely stony
- 11A Edgemere extremely stony loam, 0 to 3 percent slopes, very rubbly
- 19B Morris very channery loam, 0 to 8 percent slopes, very stony
- 20 Freetown mucky peat
- 25B Wurlisboro channery fine sandy loam, 0 to 8 percent slopes, stony
- 25C Wurlisboro channery fine sandy loam, 8 to 15 percent slopes, stony
- 30B Wurlisboro stony fine sandy loam, 0 to 8 percent slopes, extremely stony
- 30C Wurlisboro stony fine sandy loam, 8 to 15 percent slopes, extremely stony
- 30D Wurlisboro stony fine sandy loam, 15 to 25 percent slopes, extremely stony
- 38B Swarwood stony fine sandy loam, 0 to 8 percent slopes, extremely stony
- 97B Lordstown very channery loam, 3 to 8 percent slopes, very stony
- 97C Lordstown very channery loam, 8 to 15 percent slopes, very stony
- 111B Edgemere-Shohola complex, 3 to 15 percent slopes, very rubbly
- 240F Oquaga-Arnot-Rock outcrop complex, 20 to 60 percent slopes, very rubbly
- 402C Arnot very channery loam, 3 to 15 percent slopes, very rocky
- 897B Lordstown-Swarwood complex, 0 to 8 percent slopes, extremely stony

**LEGEND**

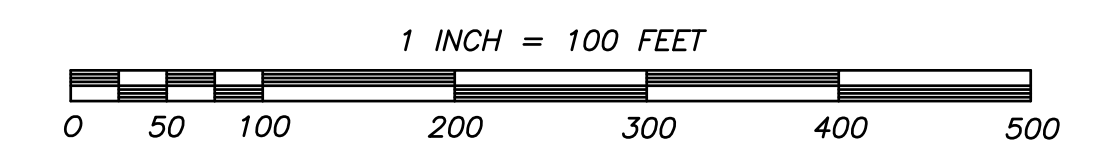
- 1/2" rebar set (unless otherwise noted)
- ⊕ Utility Pole
- Percolation test
- ▲ Deep Test Pit
- ▭ Stonewall
- ▭ Wetlands
- ⊕ Potential Well Site
- ⊕ Soils Type Symbol
- Mapped Soils Boundary

CURVE	RADIUS	DELTA ANGLE	ARC LENGTH	CHORD BEARING	CHORD LENGTH
C7	525.00'	31°35'37"	289.49'	S 67°01'55" E	285.84'
C8	25.00'	89°48'22"	39.19'	S 37°55'33" E	35.30'
C9	270.00'	65°19'34"	307.84'	S 39°38'25" W	291.44'
C10	330.00'	11°26'14"	65.87'	S 66°35'05" W	65.76'
C11	330.00'	13°29'33"	77.71'	S 54°07'12" W	77.53'
C43	25.00'	90°11'54"	39.36'	S 52°04'20" W	35.42'
C123	225.00'	22°18'03"	87.58'	S 05°32'50" W	87.02'
C124	425.00'	32°23'23"	240.26'	S 00°30'10" W	237.07'
C125	525.00'	05°48'44"	53.26'	S 18°35'54" E	53.23'
C126	25.00'	61°46'04"	26.95'	S 02°38'27" E	25.66'
C127	525.00'	26°46'25"	245.33'	S 20°08'16" E	243.10'
C128	225.00'	19°15'56"	75.66'	S 15°14'10" E	75.30'
C129	25.00'	59°28'43"	25.95'	S 54°36'30" E	24.80'
C130	73.00'	112°35'26"	143.45'	S 28°03'08" E	121.46'
C134	330.00'	65°19'34"	376.25'	N 39°38'25" E	356.20'



KEY MAP  
SCALE: 1" = 1000'

**PRELIMINARY PLAN**



**SUBDIVISION SURVEY OF SECTION 1  
QUARRY HEIGHTS  
AT PARKERS GLEN**  
SHOHOLA TOWNSHIP, PIKE COUNTY, PA.  
SEPTEMBER 5, 2008

**SHEET 3**

DATE	REVISIONS
12/17/08	Road name change
12/18/08	potential driveway location
6/10/09	Cul-de-sac - lots adjusted
11/2/09	Dimension wetland buffer

**PACKER ASSOCIATES, INC.**  
GARY PACKER - PROFESSIONAL LAND SURVEYOR  
148 HOGATE ROAD, HONESDALE, PA 18431  
TELEPHONE : (570) 224-4300

DRAWN: MKP CHECKED: MKP APPRVD: GCP MAP NO. 06-PK-55