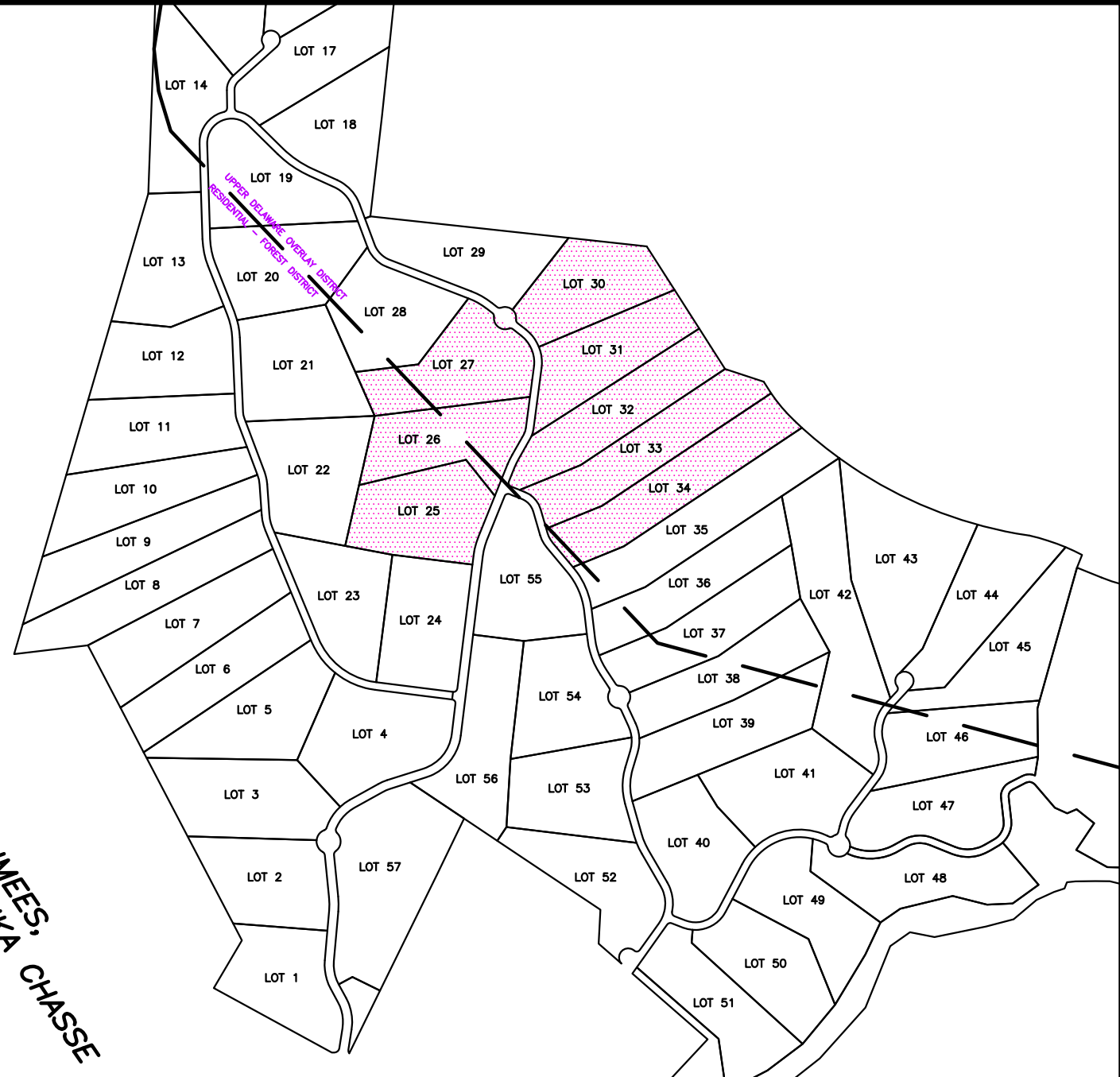
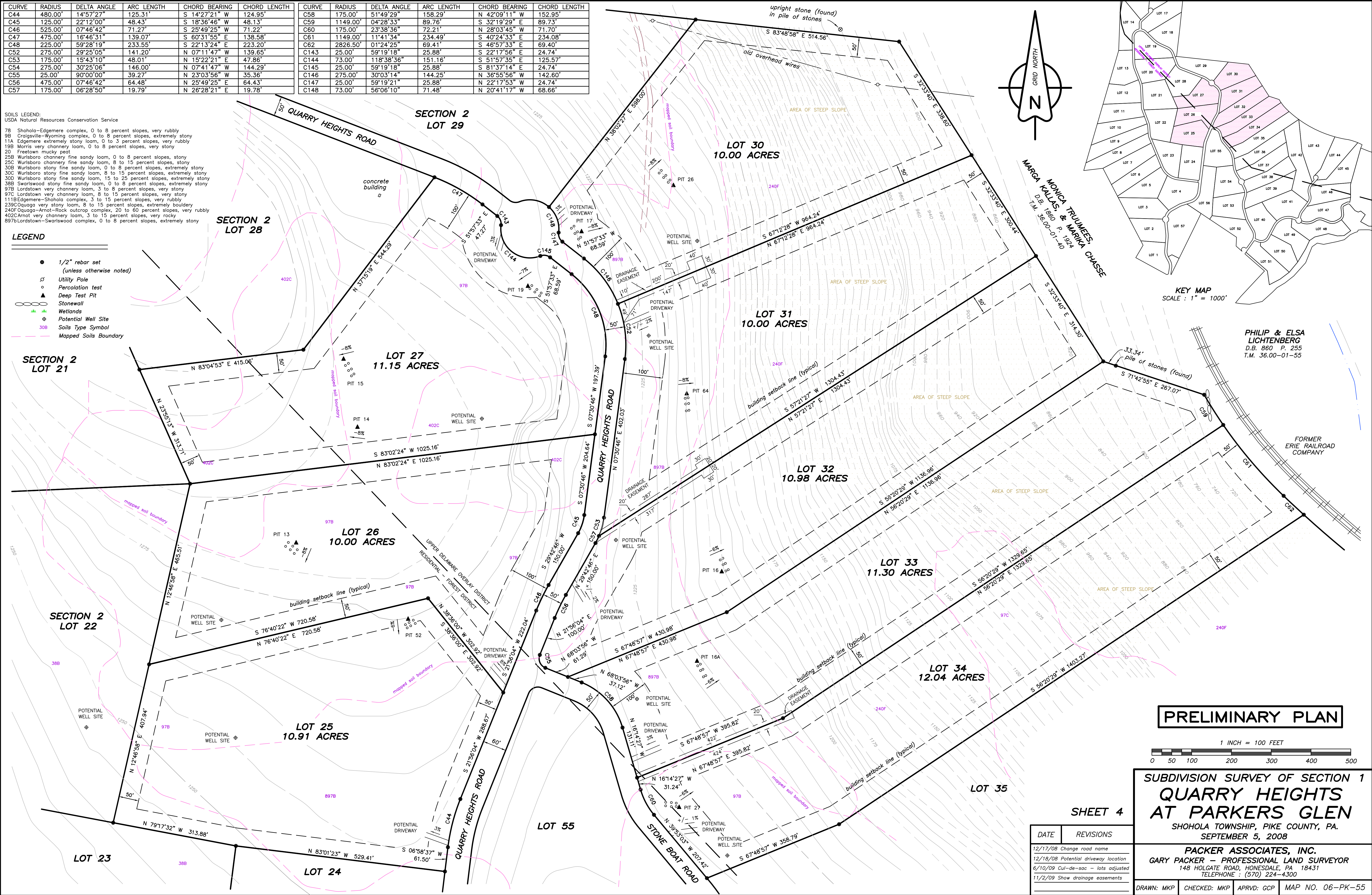


CURVE	RADIUS	DELTA ANGLE	ARC LENGTH	CHORD BEARING	CHORD LENGTH	CURVE	RADIUS	DELTA ANGLE	ARC LENGTH	CHORD BEARING	CHORD LENGTH
C44	480.00'	14°57'27"	125.31'	S 14°27'21" W	124.95'	C58	175.00'	51°49'29"	158.29'	N 42°09'11" W	152.95'
C45	125.00'	22°12'00"	48.43'	S 18°36'46" W	48.13'	C59	1149.00'	04°28'33"	89.76'	S 32°19'29" E	89.73'
C46	525.00'	07°46'42"	71.27'	S 25°49'25" W	71.22'	C60	175.00'	23°38'36"	72.21'	N 28°03'45" W	71.70'
C47	475.00'	16°46'31"	139.07'	S 60°31'55" E	138.58'	C61	1149.00'	11°41'34"	234.49'	S 40°24'33" E	234.08'
C48	225.00'	59°28'19"	233.55'	S 22°13'24" E	223.20'	C62	2826.50'	01°24'25"	69.41'	S 46°57'33" E	69.40'
C52	275.00'	29°25'05"	141.20'	N 07°11'47" W	139.65'	C143	25.00'	59°19'18"	25.88'	S 22°17'56" E	24.74'
C53	175.00'	15°43'10"	48.01'	N 15°22'21" E	47.86'	C144	73.00'	118°38'36"	151.16'	S 51°57'35" E	125.57'
C54	275.00'	30°25'06"	146.00'	N 07°41'47" W	144.29'	C145	25.00'	59°19'18"	25.88'	S 81°37'14" E	24.74'
C55	25.00'	90°00'00"	39.27'	N 23°03'56" W	35.36'	C146	275.00'	30°03'14"	144.25'	N 36°55'56" W	142.60'
C56	475.00'	07°46'42"	64.48'	N 25°49'25" E	64.43'	C147	25.00'	59°19'21"	25.88'	N 22°17'53" W	24.74'
C57	175.00'	06°28'50"	19.79'	N 26°28'21" E	19.78'	C148	73.00'	56°06'10"	71.48'	N 20°41'17" W	68.66'

SOILS LEGEND:  
 USDA Natural Resources Conservation Service

78 Shohola-Edgemere complex, 0 to 8 percent slopes, very rubbly  
 9B Craigville-Wyoming complex, 0 to 8 percent slopes, extremely stony  
 11A Edgemere extremely stony loam, 0 to 3 percent slopes, very rubbly  
 19B Morris very channery loam, 0 to 8 percent slopes, very stony  
 20 Freetown mucky peat  
 25B Wurtsboro channery fine sandy loam, 0 to 8 percent slopes, stony  
 25C Wurtsboro channery fine sandy loam, 8 to 15 percent slopes, stony  
 30B Wurtsboro stony fine sandy loam, 0 to 8 percent slopes, extremely stony  
 30C Wurtsboro stony fine sandy loam, 8 to 15 percent slopes, extremely stony  
 30D Wurtsboro stony fine sandy loam, 15 to 25 percent slopes, extremely stony  
 38B Swartswood stony fine sandy loam, 0 to 8 percent slopes, extremely stony  
 97B Lordstown very channery loam, 3 to 8 percent slopes, very stony  
 97C Lordstown very channery loam, 8 to 15 percent slopes, very stony  
 111B Edgemere-Shohola complex, 3 to 15 percent slopes, very rubbly  
 239C Oquaga very stony loam, 8 to 15 percent slopes, extremely bouldery  
 240F Oquaga-Arnot-Rock outcrop complex, 20 to 60 percent slopes, very rubbly  
 402C Arnot very channery loam, 3 to 15 percent slopes, very rocky  
 897B Lordstown-Swartswood complex, 0 to 8 percent slopes, extremely stony

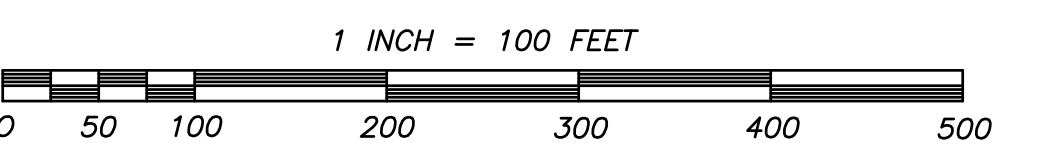
- LEGEND**
- 1/2" rebar set (unless otherwise noted)
  - Utility Pole
  - Percolation test
  - ▲ Deep Test Pit
  - Stone wall
  - Wetlands
  - Potential Well Site
  - Soils Type Symbol
  - Mapped Soils Boundary



PHILIP & ELSA LICHTENBERG  
 D.B. 860 P. 255  
 T.M. 36.00-01-55

FORMER ERIE RAILROAD COMPANY

**PRELIMINARY PLAN**



**SUBDIVISION SURVEY OF SECTION 1  
 QUARRY HEIGHTS  
 AT PARKERS GLEN**  
 SHOHOLA TOWNSHIP, PIKE COUNTY, PA.  
 SEPTEMBER 5, 2008

**PACKER ASSOCIATES, INC.**  
 GARY PACKER - PROFESSIONAL LAND SURVEYOR  
 148 HOLGATE ROAD, HONESDALE, PA 18431  
 TELEPHONE : (570) 224-4300

**SHEET 4**

DATE	REVISIONS
12/17/08	Change road name
12/18/08	Potential driveway location
6/10/09	Cul-de-sac - lots adjusted
11/2/09	Show drainage easements

DRAWN: MKP CHECKED: MKP APPRVD: GCP MAP NO. 06-PK-55