



pennsylvania
DEPARTMENT OF TRANSPORTATION
www.dot.state.pa.us

October 15, 2013

Ms. Rosemary Chiavetta, Secretary
Pennsylvania Public Utility Commission
P.O. Box 3265
Harrisburg, PA 17105-3265

RECEIVED
2013 NOV - 1 PM 3:28
PA.P.U.C.
SECRETARY'S BUREAU

RE:

Application of the Department of Transportation of the Commonwealth of Pennsylvania for approval to widen and replace the existing eastbound bridge structure where State Route 0070, Section T10 crosses over a single track owned by CSX Transportation, Inc., and operated on by Allegheny Valley Railroad Company (DOT No. 145 584 X) in South Strabane Township, Washington County and the allocation of costs incident thereto.

Dear Secretary Chiavetta:

Enclosed for filing, please find the original and three copies of the Application of the Department of Transportation.

A copy of this Application and Exhibits have been served upon the parties in the Certificate of Service to the Application.

Sincerely,

A handwritten signature in cursive script, appearing to read "Thomas A. Ryczek Jr.".

Thomas A. Ryczek Jr.
District Grade Crossing Administrator
Engineering District 12-0
Department of Transportation

cc: Parties of Record
Chief, Utilities and Right-of-Way Section, 7th Floor, CKB
Gina M. D'Alfonso, Office of Chief Counsel, 9th Floor, CKB
Manager, Rail Safety Division, PUC, 3rd Floor, CKB

**BEFORE
PENNSYLVANIA PUBLIC UTILITY COMMISSION**

Application of the Department of Transportation of the Commonwealth of Pennsylvania for approval to widen and replace the existing eastbound bridge structure where State Route 0070, Section T10 crosses over a single track owned by CSX Transportation, Inc., and operated on by Allegheny Valley Railroad Company (DOT No. 145 584 X) in South Strabane Township, Washington County and the allocation of costs incident thereto.

Application
Docket No. _____

RECEIVED
2013 NOV - 1 PM 3:28
PA.P.U.C.
SECRETARY'S BUREAU

To the Pennsylvania Public Utility Commission:

1. The name and address of applicant Commonwealth of Pennsylvania, Department of Transportation, Rachel D. Duda, P.E., Assistant District Executive, Engineering District 12-0, P.O. Box 459, 825 North Gallatin Avenue, Uniontown, PA 15401.
2. The name and address of attorney for the applicant are William J. Cressler, Chief Counsel, Commonwealth of Pennsylvania, Department of Transportation, Office of Chief Counsel, PO Box 8212, Harrisburg, PA 17105-8212.
3. The applicant is an agency of Commonwealth of Pennsylvania, organized and existing under the Administrative Code of 1929, 71 P.S. § 511, et. seq. and generally 36 P.S. § 670 - 401 et. seq.
4. It is desirable widen and replace the existing eastbound structure, which carries State Route 0070, Section T10 over a single track owned by CSX Transportation, Inc. and operated on by Allegheny Valley Railroad Company. The existing bridge is a three span Pre-Stress PA I-Beam with a length of 147.75 feet and a width of 42.0 feet. The proposed bridge is a three span Pre-Stress Spread Box Beam with a length of 170.0 feet and a width of 58.0 feet, and will meet the current clearance requirements. (For Preliminary Plans, see Exhibit "A" included; for location map, see Exhibit "B" included.)
5. The names and addresses of the persons, parties and entities concerned in, or affected by the proposed construction, to the best of the applicant's knowledge, are shown in the certificate of service. In addition to those served, the applicant requests that the following also receive service of all documents in this matter:

Mark J. Chappell P.E., Chief
Utilities and Right of Way Section
Pennsylvania Department of Transportation
P.O. Box 3362
Harrisburg, PA 17105-3362


Ms. Rachel D. Duda, P.E., Assistant District
Executive - Design
Engineering District 12-0
Pennsylvania Department of Transportation
825 North Gallatin Avenue Ext.
Uniontown, PA 15401
Attention: Mr. Thomas A. Ryczek Jr.

Gina M. D'Alfonso
Assistant Counsel in Charge
Office of Chief Counsel
Pennsylvania Department of Transportation
P.O. Box 3265
Harrisburg, PA 17105-3265

6. State Route 0070 crosses over a single track owned by CSX Transportation, Inc. and operated on by Allegheny Valley Railroad at Segment 0200, Offset 2030 and said crossing should be altered as indicated. The ADT for State Route 0070 is 57,770 vehicles with 9% trucks.
7. The estimated total cost for the project is approximately \$50 million. The funding for the project will be 90% Federal Funds and 10% State Funds.
8. This project is necessary and proper for the safety and convenience of the public.
9. A conference of all parties of interest should be held to discuss the proposed improvement.

Wherefore, applicant respectfully requests that the Public Utility Commission approve the application.

Respectfully Submitted:


Rachel D. Duda, P.E.
Assistant District Executive-Design
Engineering District 12-0
Department of Transportation

**BEFORE
PENNSYLVANIA PUBLIC UTILITY COMMISSION**


Application of the Department of Transportation of the Commonwealth of Pennsylvania for approval to widen and replace the existing eastbound bridge structure where State Route 0070, Section T10 crosses over a single track owned by CSX Transportation, Inc., and operated on by Allegheny Valley Railroad Company (DOT No. 145 584 X) in South Strabane Township, Washington County and the allocation of costs incident thereto.

Application
Docket No. _____

VERIFICATION

I, Thomas A. Ryczek Jr., hereby state that the facts above set forth are true and correct to the best of my knowledge, information and belief and that I expect to be able to prove the same at a hearing held in this matter. I understand that the statements herein are made subject to the penalties of 18 Pa.C.S. §4904 (relating to unsworn falsification to authorities).

Date: October 31, 2013



Thomas A. Ryczek Jr.,
Grade Crossing Administrator

RECEIVED
2013 NOV - 1 PM 3:28
PA.P.U.C.
SECRETARY'S BUREAU

RECEIVED
 2013 NOV -1 PM 3:28
 PA.P.U.C.
 SECRETARY'S BUREAU

FEDERAL PROJECT NO. X125-247-H050

IM 581	DISTRICT 12	COUNTY	TOWNSHIP	BOROUGH	ROUTE	SECTION	TOTAL SHEETS	
		WASHINGTON	SOUTH STRABANE		0070	T10	81	
WBS ELEMENT								
T/P	SYS	WO	SPUR	PHA	SECTION	ORG.	PRG.	P.C
P	1	0	0	0	7	0	0	3
S. R. 0070 PREVIOUSLY KNOWN AS ROUTE NO. 798								ECMS: 73514

COMMONWEALTH OF PENNSYLVANIA

 DEPARTMENT OF TRANSPORTATION
 DRAWINGS

FOR
DESIGN FIELD VIEW
 OF
 STATE ROUTE 0070 SECTION T10
 IN WASHINGTON COUNTY

ALSO INCLUDED:
 TRAFFIC CONTROL PLAN 88 SHEETS
 SIGNING PLAN 11 SHEETS
 EROSION AND SEDIMENTATION CONTROL PLAN 23 SHEETS
 CROSS SECTIONS 59 SHEETS

FROM STA. 1076+00.00 TO STA. 1206+00.00 LENGTH 12,861.00 FT. 2.436 MI.
 FROM SEC. 0184 OFFSET 1892 TO SEC. 0210 OFFSET 1675 E. B.
 FROM SEC. 0185 OFFSET 1947 TO SEC. 0211 OFFSET 1639 W. B.

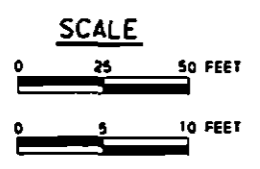
ESTABLISHED AS A LIMITED ACCESS HIGHWAY FROM
 STATION 1076+00.00 TO STATION 1142+00.00
 LEGISLATIVE ROUTE 798, SECTION 1-A
 APPROVED AUGUST 1, 1958.

ESTABLISHED AS A LIMITED ACCESS HIGHWAY FROM
 STATION 1142+00.00 TO STATION 1206+00.00
 LEGISLATIVE ROUTE 798, SECTION 1
 APPROVED JULY 5, 1959.

RE-ESTABLISHED AS A LIMITED ACCESS HIGHWAY FROM
 STATION 1156+00.00 TO STATION 1195+00.00 BY PLAN OF
 STATE ROUTE 0079 (FORMERLY L.R. 1008), SECTION 20H AND
 STATE ROUTE 0070 (FORMERLY L.R. 798), SECTION W32
 RIGHT-OF-WAY APPROVED FEBRUARY 18, 2011.


ALSO
 STATE ROUTE 9401
 ALSO
 STATE ROUTE 8011

PRELIMINARY
 FOR REVIEW PURPOSES ONLY
 DATE PRINTED: 01/23/13



DESIGN DESIGNATION

HIGHWAY CLASSIFICATION - URBAN INTERSTATE	CURRENT A.D.T. - 57,770 (2015)
ROADWAY TYPOLOGY - N/A	DESIGN YEAR A.D.T. - 73,625 (2038)
DESIGN SPEED - 60 MPH	D.M.V. - 7,931
PAVEMENT WIDTH - 36'-0" (EACH DIRECTION)	D - 55
SHOULDER WIDTH - 10'-0" (INSIDE) 12'-0" (OUTSIDE)	T - 9

PREPARED BY  PITTSBURGH, PA	RECOMMENDED _____ 20 _____
	DISTRICT EXECUTIVE
	RECOMMENDED _____ 20 _____
	DEPUTY SECRETARY
	APPROVED _____ 20 _____
	SECRETARY OF TRANSPORTATION
REG. PROF. ENGINEER	(ON BEHALF OF THE GOVERNOR AS WELL AS HIMSELF)
DATE	

FILE: S:\GANNETT\1-7-2013\0246 PROJ. MKG. CAD\DWG\110110-111\0814.dwg
 DATE: 23-Jan-2013 15:31

DISTRICT	COUNTY	ROUTE	SECTION	SHEET
12-0	WASHINGTON	0070	T10	3 OF 4
SOUTH STRABANE TOWNSHIP				
REVISION NUMBER	REVISIONS	DATE	BY	

LIMIT OF WORK
 STA. 1076+00.00
 SEG. 0184 OFFSET 1892 E.B.
 SEG. 0185 OFFSET 1947 W.B.
 S.R. 0070 SEC T10
 SOUTH STRABANE TOWNSHIP
 WASHINGTON COUNTY

START WORK
 STA. 1077+36.00
 SEG. 0185 OFFSET 2036
 S.R. 0070 W.B.
 SECTION T10

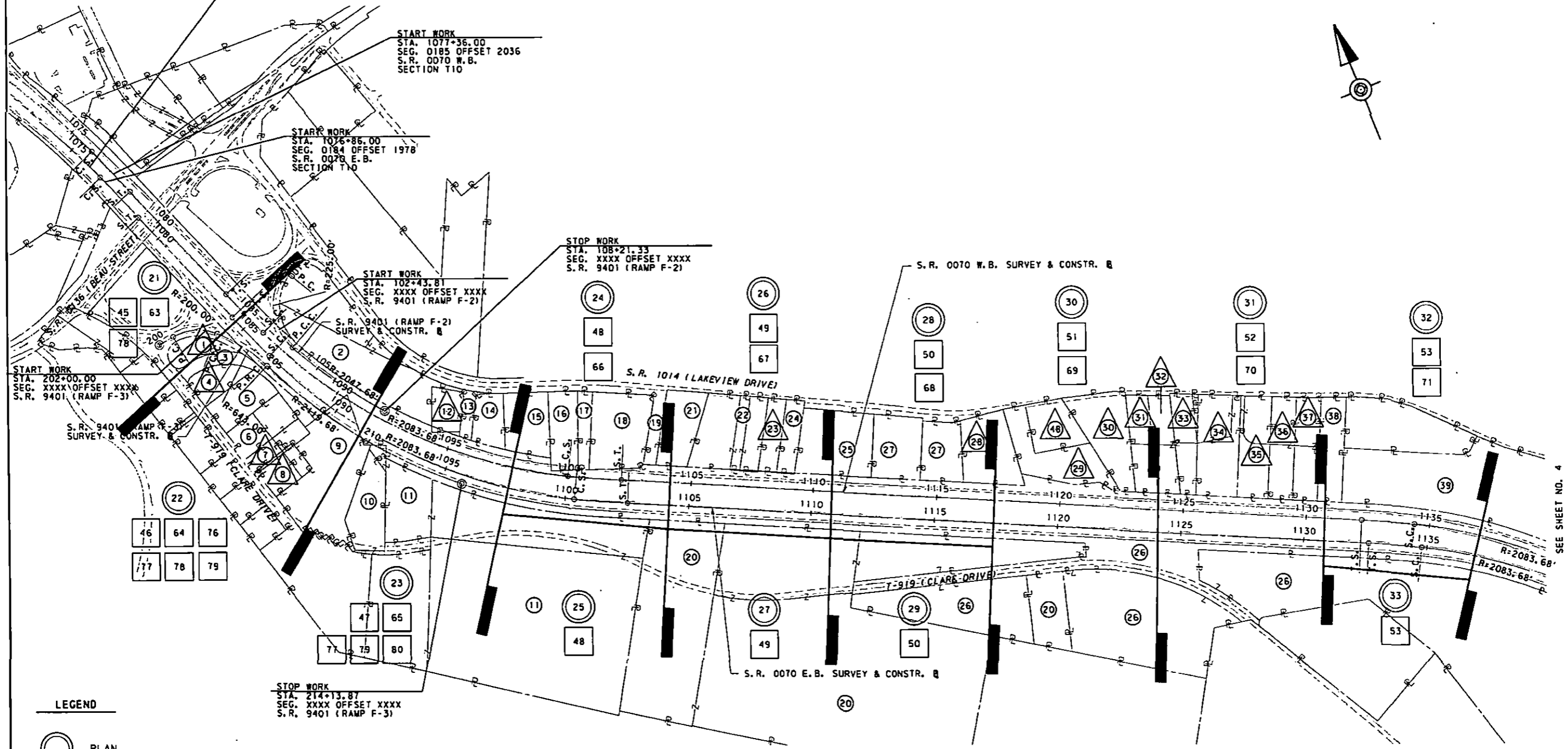
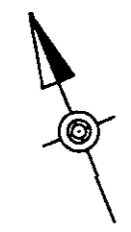
START WORK
 STA. 1076+85.00
 SEG. 0184 OFFSET 1978
 S.R. 0078 E.B.
 SECTION T10

STOP WORK
 STA. 108+21.33
 SEG. XXXX OFFSET XXXX
 S.R. 9401 (RAMP F-2)

START WORK
 STA. 102+43.81
 SEG. XXXX OFFSET XXXX
 S.R. 9401 (RAMP F-2)





START WORK
 STA. 202+00.00
 SEG. XXXX OFFSET XXXX
 S.R. 9401 (RAMP F-3)

STOP WORK
 STA. 214+13.87
 SEG. XXXX OFFSET XXXX
 S.R. 9401 (RAMP F-3)



SEE SHEET NO. 4

LEGEND

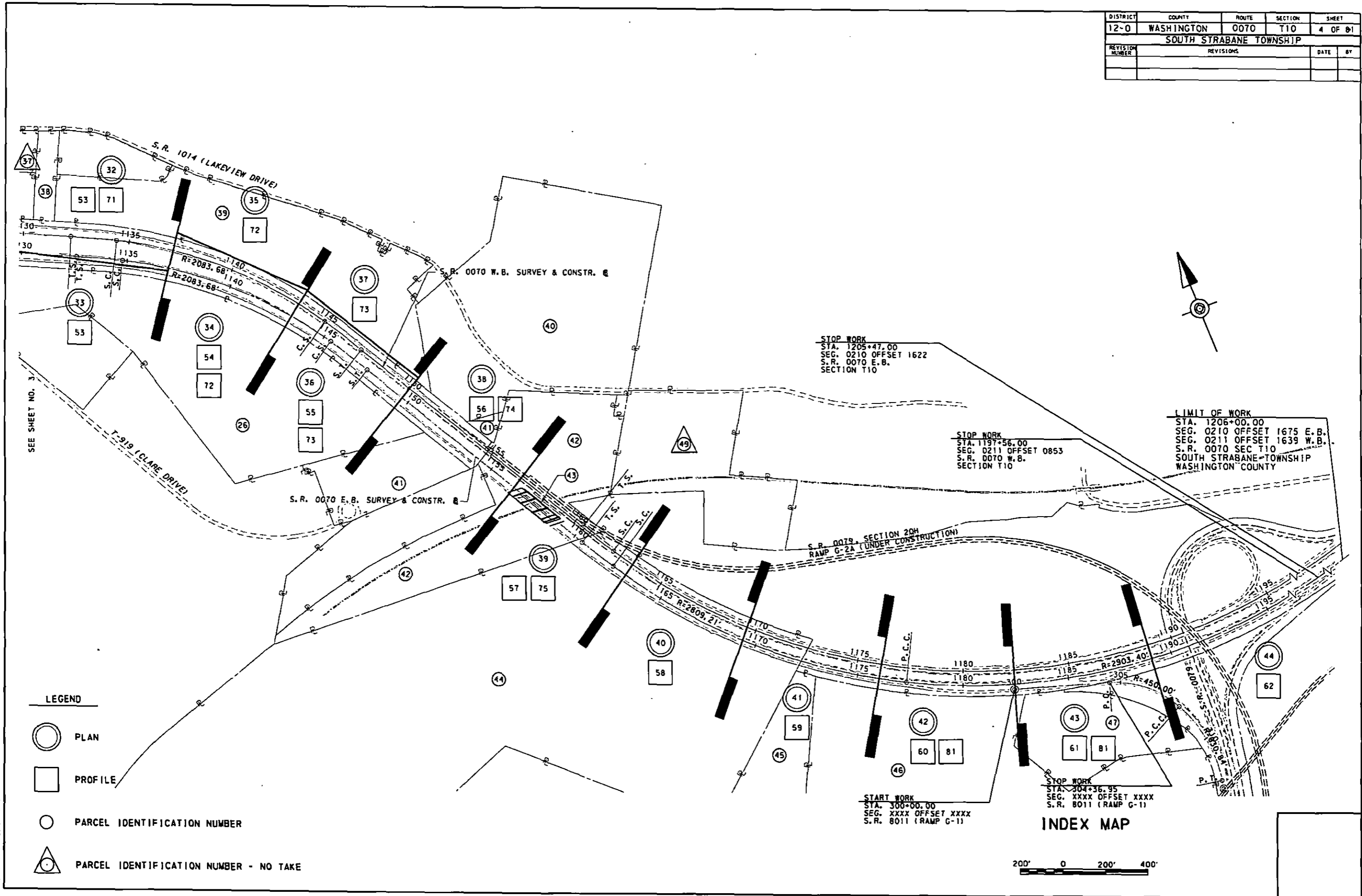
-  PLAN
-  PROFILE
-  PARCEL IDENTIFICATION NUMBER
-  PARCEL IDENTIFICATION NUMBER - NO TAKE

INDEX MAP



FILE: I:\CADD\1170110-Inda\0200.dwg DATE: 22-Jun-2011 10:11

DISTRICT	COUNTY	ROUTE	SECTION	SHEET
12-0	WASHINGTON	0070	T10	4 OF 81
SOUTH STRABANE TOWNSHIP				
REVISION NUMBER	REVISIONS	DATE	BY	

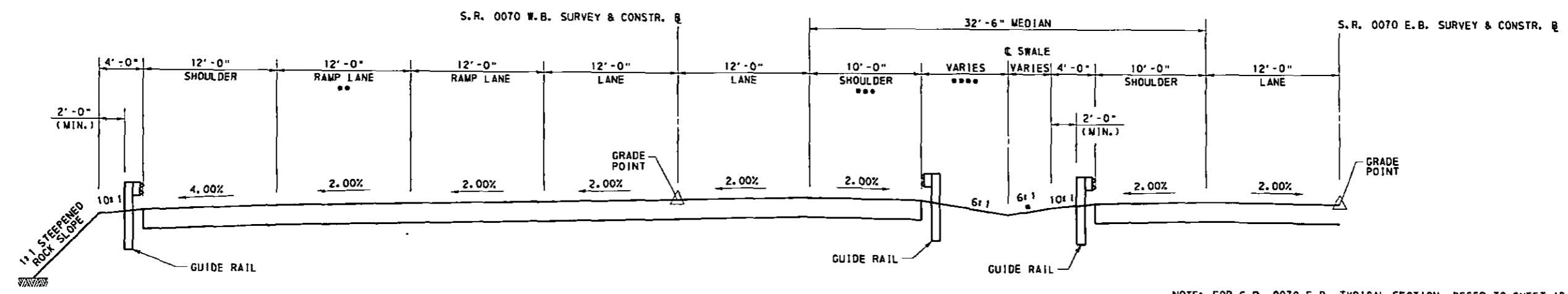


- LEGEND**
- PLAN
 - PROFILE
 - PARCEL IDENTIFICATION NUMBER
 - PARCEL IDENTIFICATION NUMBER - NO TAKE

FILE: R:\V04863\1-70\02\06_P01\RR\ANG_CADD\04\171010-INDEX02.DWG
 DATE: 22-Jan-2013 15:17

DISTRICT	COUNTY	ROUTE	SECTION	SHEET
12-0	WASHINGTON	0070	T10	14 OF 81
SOUTH STRABANE TOWNSHIP				
REVISION NUMBER	REVISIONS	DATE	BY	

S. R. 0070

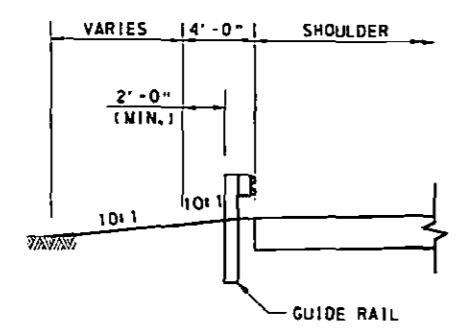


NOTE: FOR S. R. 0070 E. B. TYPICAL SECTION, REFER TO SHEET 15 OF 81.

NOTE: PROPOSED 1:1 STEEPENED ROCK SLOPE TIES INTO 1:1 STEEPENED ROCK SLOPE CONSTRUCTED AS PART OF THE S. R. 0079, SECTION 20H PROJECT AT W. B. STA. 1153+40.00.

S. R. 0070 W. B. TYPICAL TANGENT SECTION

S. R. 0070 W. B. STA. 1147+95.74 TO STA. 1157+54.46

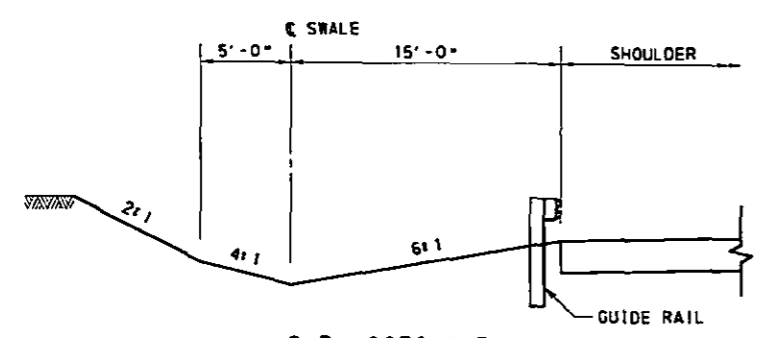


S. R. 0070 W. B. DETAIL - GUIDE RAIL AT EXISTING SLOPE

S. R. 0070 W. B. STA. 1150+25.00 TO STA. 1151+24.75

- RAMP LANE WIDTH
S. R. 0070 W. B. STA. 1145+44.56 TO STA. 1148+44.54
- RAMP LANE VARIES 2'-0" TO 12'-0"
- S. R. 0070 W. B. STA. 1148+44.54 TO STA. 1157+54.46
- RAMP LANE 12'-0"
- W. B. SHOULDER, RT. WIDTH
S. R. 0070 W. B. STA. 1147+95.74 TO STA. 1156+07.06
- W. B. SHOULDER, RT. 10'-0"
- S. R. 0070 W. B. STA. 1156+07.06 TO STA. 1157+07.06
- W. B. SHOULDER, RT. VARIES 10'-0" TO 12'-0" AT BRIDGE

- SLOPE (REFER TO CROSS SECTIONS)
S. R. 0070 E. B. STA. 1153+00.00 TO STA. 1156+65.54
- SLOPE VARIES 6:1 TO 2:1
- WIDTH VARIES (REFER TO CROSS SECTIONS)
S. R. 0070 E. B. STA. 1147+00.00 TO STA. 1147+50.00
- WIDTH VARIES 6'-0" TO 6'-3"
- S. R. 0070 E. B. STA. 1147+50.00 TO STA. 1153+50.00
- WIDTH VARIES 6'-3" TO 6'-0"
- S. R. 0070 E. B. STA. 1153+50.00 TO STA. 1155+00.00
- WIDTH 6'-0"
- S. R. 0070 E. B. STA. 1155+00.00 TO STA. 1156+65.54
- WIDTH VARIES 6'-0" TO 4'-0"



S. R. 0070 W. B. DETAIL - SWALE

S. R. 0070 W. B. STA. 1146+45.00 TO STA. 1149+80.00

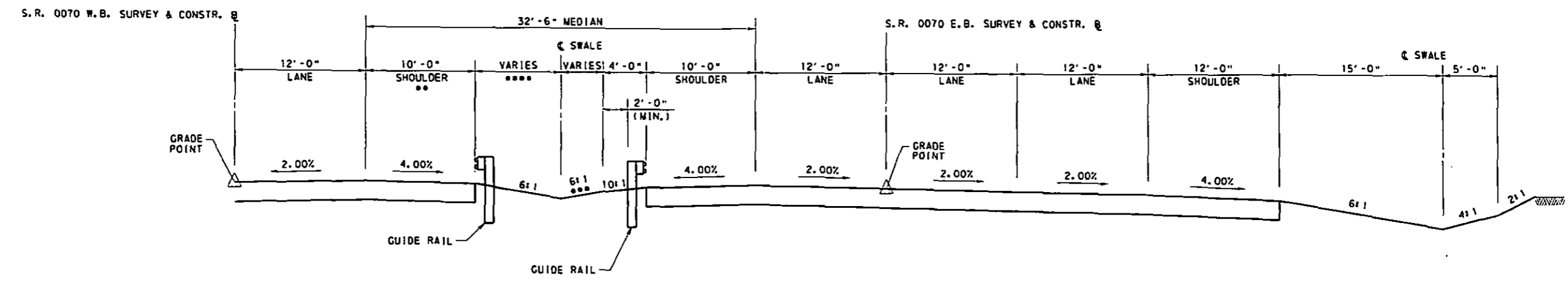
TYPICAL SECTIONS

FILE: K:\046865\1-10\0220.dwg PRJ: WRS: CAD:04\1101\01-10\0000.dwg DATE: 22-Jan-2013 10:02

DISTRICT	COUNTY	ROUTE	SECTION	SHEET
12-0	WASHINGTON	0070	T10	16 OF 81
SOUTH STRABANE TOWNSHIP				
REVISION NUMBER	REVISIONS	DATE	BY	

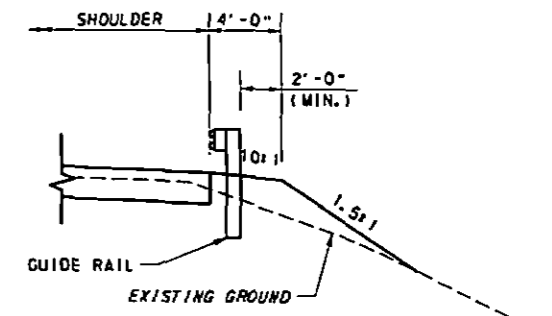
S. R. 0070

NOTE: FOR S.R. 0070 W.B. TYPICAL SECTION, REFER TO SHEET 14 OF 81.



- ***W.B. SHOULDER, RT. WIDTH
S.R. 0070 W.B. STA. 1147+95.74 TO STA. 1156+07.06
-W.B. SHOULDER, RT. 10'-0"
- S.R. 0070 W.B. STA. 1156+07.06 TO STA. 1157+07.06
-W.B. SHOULDER, RT. VARIES 10'-0" TO 12'-0"
- ***SLOPE (REFER TO CROSS SECTIONS)
S.R. 0070 E.B. STA. 1153+00.00 TO STA. 1156+57.31
-SLOPE VARIES 6:1 TO 2:1
- ***WIDTH VARIES (REFER TO CROSS SECTIONS)
S.R. 0070 E.B. STA. 1147+50.00 TO STA. 1153+50.00
-WIDTH VARIES 6'-3" TO 6'-0"
- S.R. 0070 E.B. STA. 1153+50.00 TO STA. 1155+00.00
-WIDTH 6'-0"
- S.R. 0070 E.B. STA. 1155+00.00 TO STA. 1156+65.54
-WIDTH VARIES 6'-0" TO 4'-0"

**S. R. 0070 E.B.
TYPICAL TANGENT SECTION**
S. R. 0070 E.B. STA. 1147+53.99 TO STA. 1156+65.54



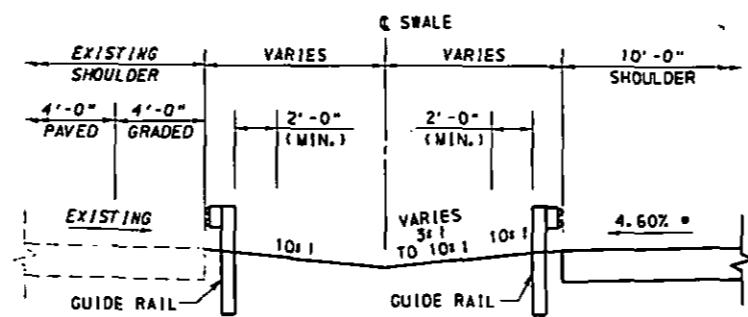
**S. R. 0070 E.B.
DETAIL - 1.5:1 FILL SLOPE WITH GUIDE RAIL**
S. R. 0070 E.B. STA. 1152+15.00 TO STA. 1156+57.31

TYPICAL SECTIONS

FILE: N:\048863_1-70\025.mxd, PROJ: WRS&D, CADD:\DWG\10110-1\048863.dwg
DATE: 23-Jun-2013 10:42

DISTRICT	COUNTY	ROUTE	SECTION	SHEET
12-0	WASHINGTON	0070	T10	16 OF 81
SOUTH STRABANE TOWNSHIP				
REVISION NUMBER	REVISIONS	DATE	BY	

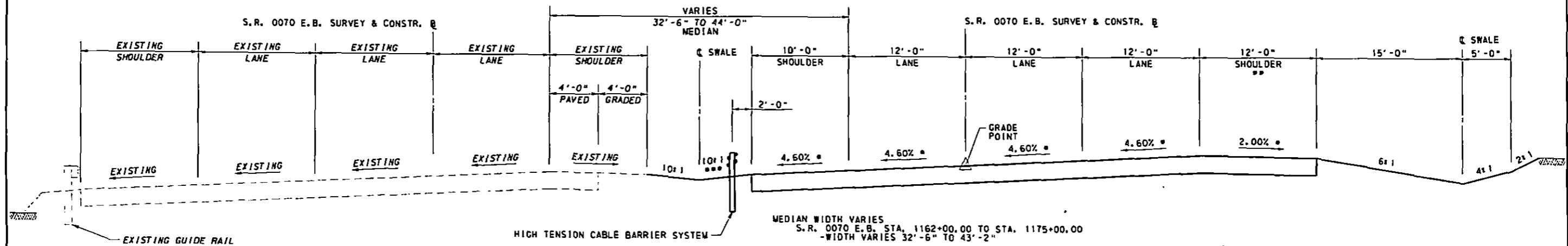
S. R. 0070



•SUPERELEVATION TRANSITION CROSS SLOPES:
 STA. 1158+79.10 TO STA. 1159+65.27 E. B.
 -LANES, E. B. 2.00%
 -SHOULDER, LT. 4.00%
 -SHOULDER, RT. 4.00%
 STA. 1159+65.27 TO STA. 1160+45.27 E. B.
 -LANES, E. B. VARY 2.00% TO LEVEL
 -SHOULDER, LT. 4.00%
 -SHOULDER, RT. 4.00%
 STA. 1160+45.27 TO STA. 1162+29.27 E. B.
 -LANES, E. B. VARIES LEVEL TO 4.60%
 -SHOULDER, LT. VARIES 4.00% TO 4.60%
 -SHOULDER, RT. VARIES 4.00% TO 2.00%

**S. R. 0070
 DETAIL - MEDIAN SWALE WITH GUIDE RAIL**

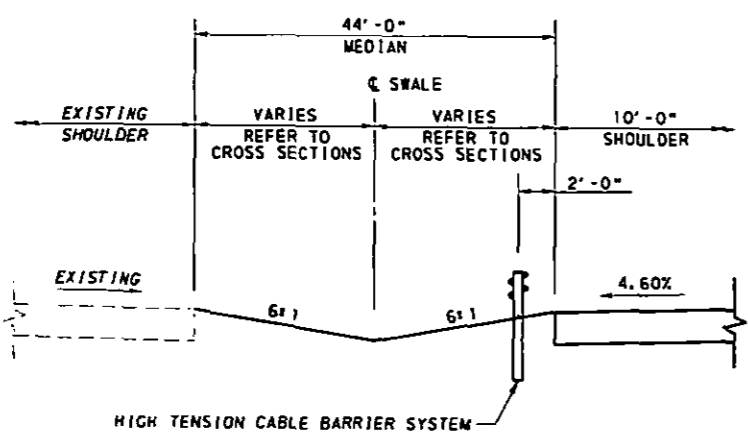
S. R. 0070 E. B. STA. 1158+79.10 TO STA. 1162+00.00
 S. R. 0070 W. B. STA. 1161+40.00 TO STA. 1163+90.00



**S. R. 0070 E. B.
 TYPICAL SUPERELEVATED SECTION**

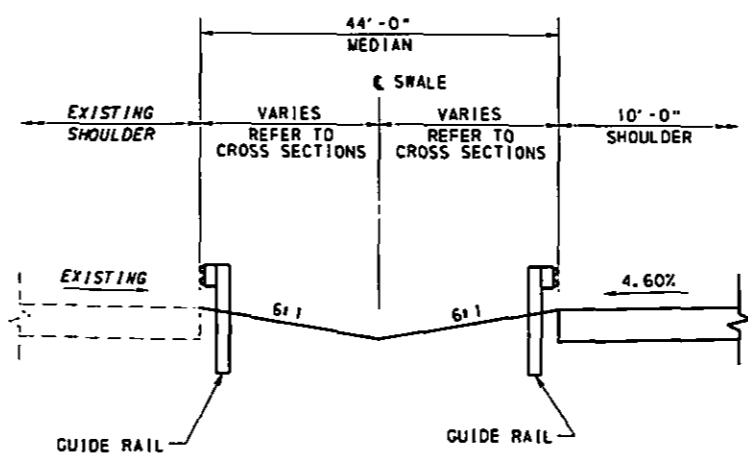
S. R. 0070 E. B. STA. 1158+79.10 TO STA. 1182+43.31

***SLOPE (REFER TO CROSS SECTIONS)
 S. R. 0070 E. B. STA. 1158+79.10 TO STA. 1162+00.00
 -SLOPE VARIES 3:1 TO 10:1



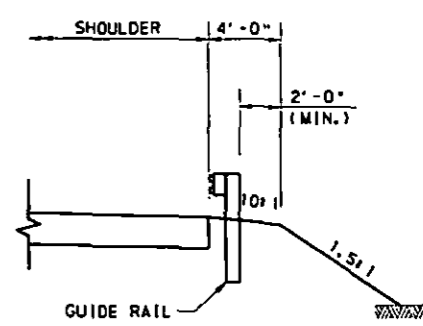
**S. R. 0070
 DETAIL - MEDIAN SWALE WITH HIGH TENSIONED CABLE BARRIER SYSTEM**

S. R. 0070 E. B. STA. 1175+00.00 TO STA. 1178+93.00
 S. R. 0070 E. B. STA. 1182+68.00 TO STA. 1188+17.00



**S. R. 0070
 DETAIL - MEDIAN SWALE WITH GUIDE RAIL AT OVERHEAD SIGN STRUCTURE**

S. R. 0070 E. B. STA. 1178+93.00 TO STA. 1182+68.00
 S. R. 0070 W. B. STA. 1182+15.00 TO STA. 1185+90.00



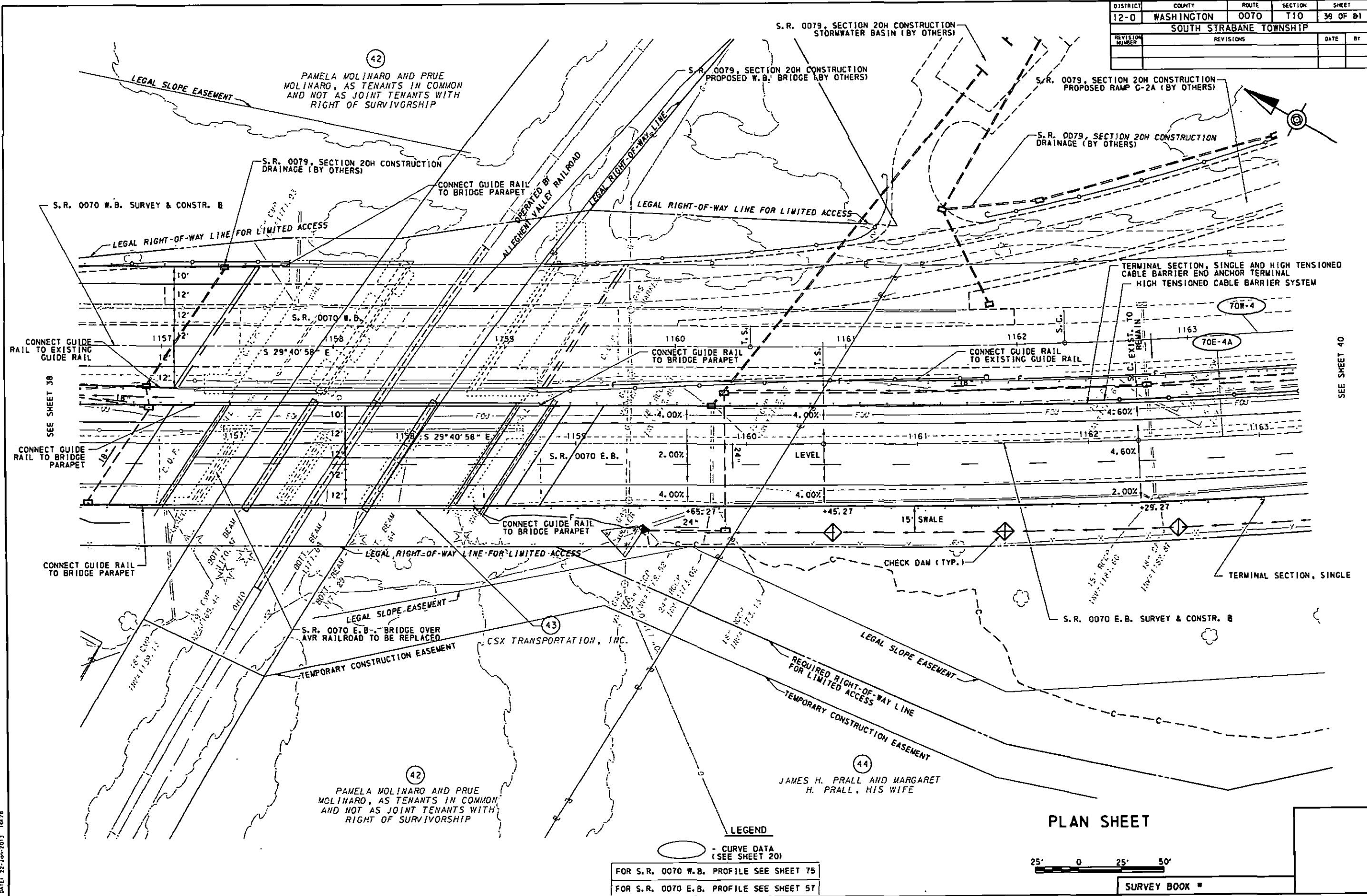
**S. R. 0070 E. B.
 DETAIL - 1.5:1 FILL SLOPE WITH GUIDE RAIL**

S. R. 0070 E. B. STA. 1178+70.00 TO STA. 1182+43.31

TYPICAL SECTIONS

FILE: K:\DRAWINGS\1-10\0070.dwg, PLOT: 0070.dwg, DATE: 22-Jun-2013 10:56

DISTRICT	COUNTY	ROUTE	SECTION	SHEET
12-0	WASHINGTON	0070	T10	39 OF 81
SOUTH STRABANE TOWNSHIP				
REVISION NUMBER	REVISIONS	DATE	BY	



FILE: P:\148863 1-20-2016. PRJ BRN.V. CAD00B\Y17010-000\005V.dwg
 DATE: 22-Jan-2013 10:28

DISTRICT	COUNTY	ROUTE	SECTION	SHEET
12-0	WASHINGTON	0070	T10	57 OF 81
SOUTH STRABANE TOWNSHIP				
REVISION NUMBER	REVISIONS			DATE BY

I-70 E.B.

P. V. I. STA. 1167+75.00
 ELEV. 1198.32
 V. C. = 1060.00'
 M. O. = -7.74'
 S. S. D. = 625.75'
 60 MPH

P. V. I. STA. 1154+04.00
 ELEV. 1169.54
 V. C. = 500.00'
 M. O. = 2.71'
 H. L. S. D. = 496.71'
 55 MPH

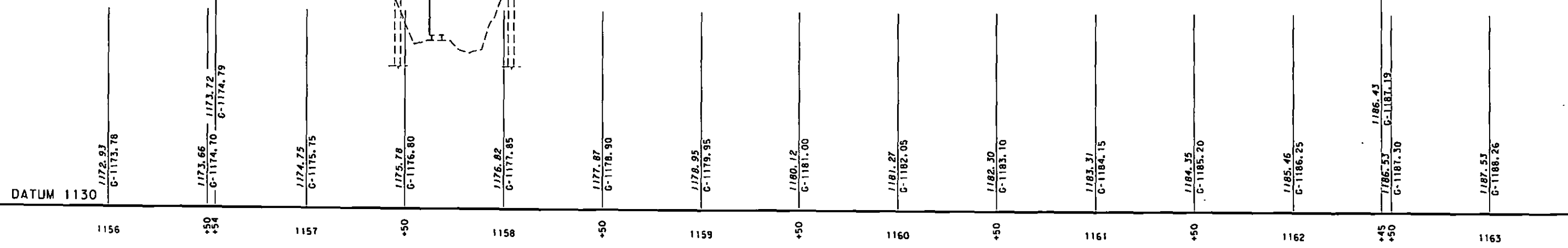
S.R. 0070 E.B. BRIDGE OVER
 AVR RAILROAD TO BE REPLACED

2.10%

23'-0" MINIMUM
 VERTICAL CLEARANCE

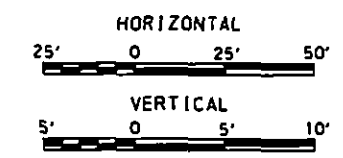
CONTINUED ON SHEET NO. 56

CONTINUED ON SHEET NO. 58



DATUM 1130

PROFILE



FOR PLAN SEE SHEET 39

SURVEY BOOK #

FILE: H:\WORK\11-70\1101.DWG, PRJ: RAK.G, CADD:\P\1101.D-21p\1101V.dgn
 DATE: 22-Jan-2013 10:33

DISTRICT	COUNTY	ROUTE	SECTION	SHEET
12-0	WASHINGTON	0070	T10	75 OF 81
SOUTH STRABANE TOWNSHIP				
REVISION NUMBER	REVISIONS	DATE	BY	

I-70 W.B.

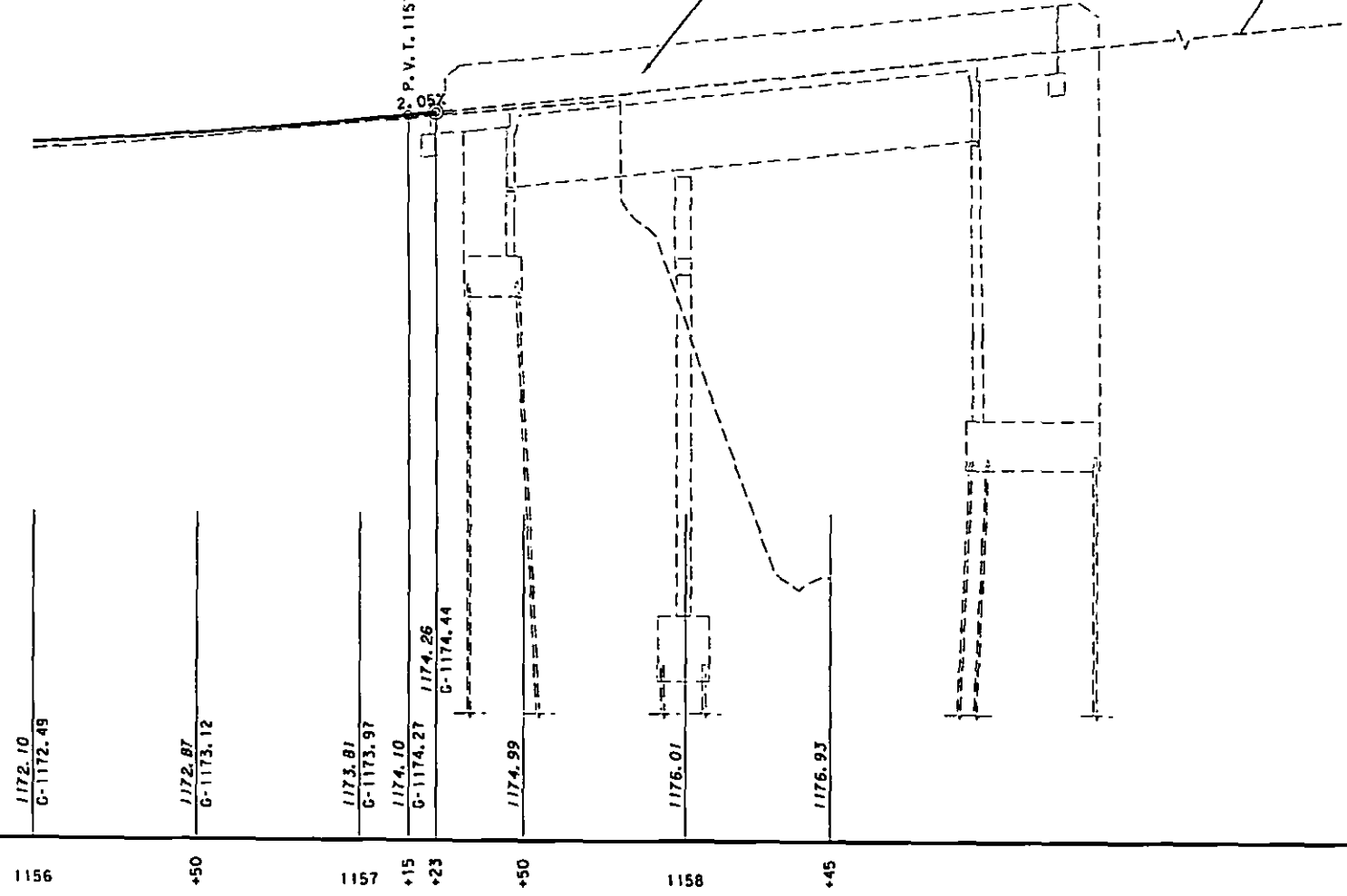
P. V. I. STA. 1154+70.00
 ELEV. 1169.25
 V. C. = 490.00'
 M. O. = 2.61'
 H. L. S. D. = 496.05'
 55 MPH

STOP WORK
 STA. 1197+56.00
 SEG. 0211 OFFSET 0853
 S.R. 0070 W.B.
 SECTION T10

S.R. 0070 WB BRIDGE OVER AVR RAILROAD- REPLACED
 AS PART OF S.R. 0079, SECTION 20H CONSTRUCTION

P. V. I. STA. 1157+23.31
 ELEV. 1174.44

P. V. T. 1157+15.00
 2.05%



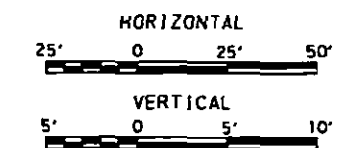
CONTINUED ON SHEET NO. 74

DATUM 1130

FILE: H:\WORKS\1-70WB\2010\PROJ\11010-00\11010-00.dgn
 DATE: 27-Jan-2015 10:35

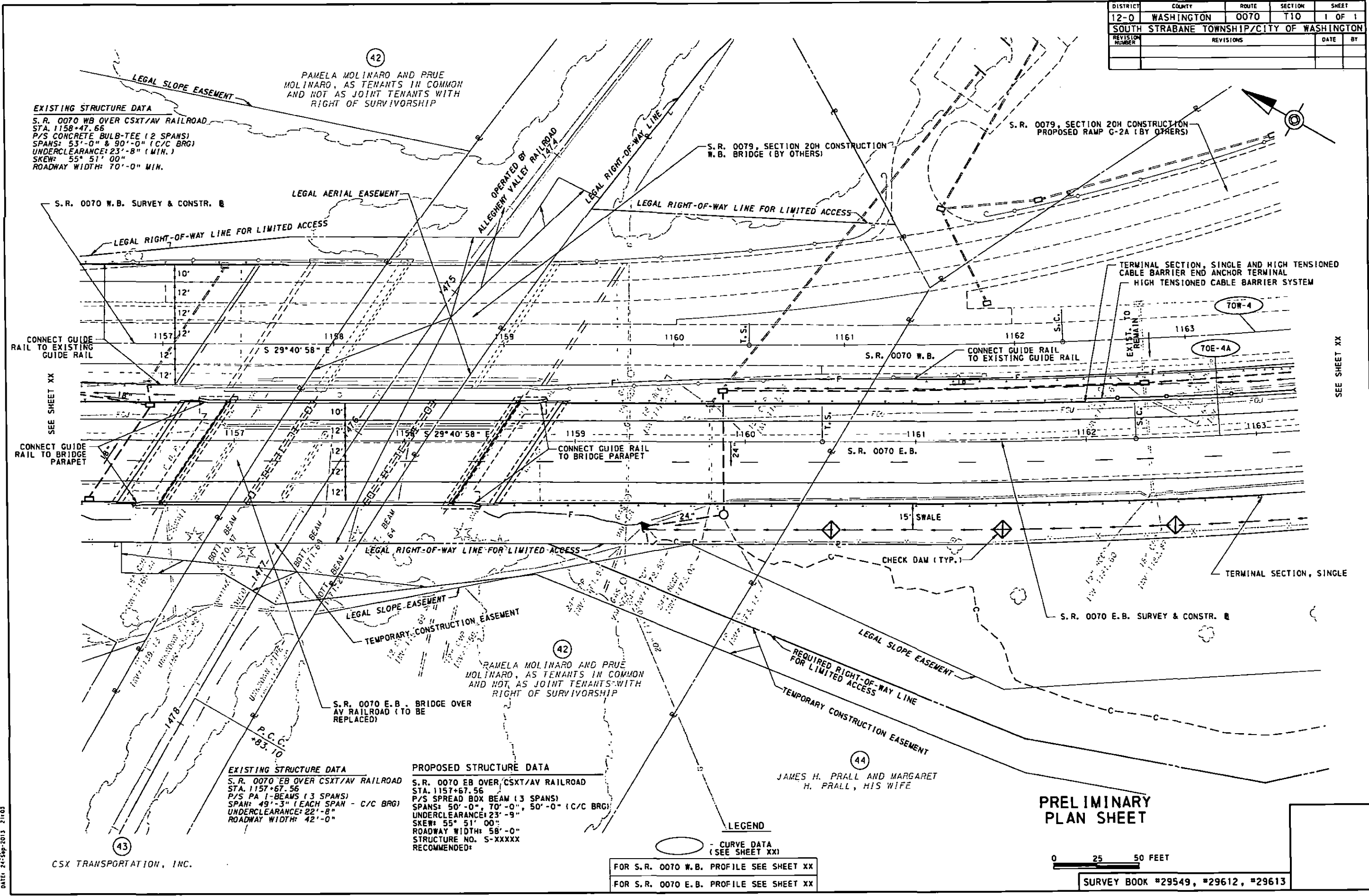
FOR PLAN SEE SHEET 39

PROFILE

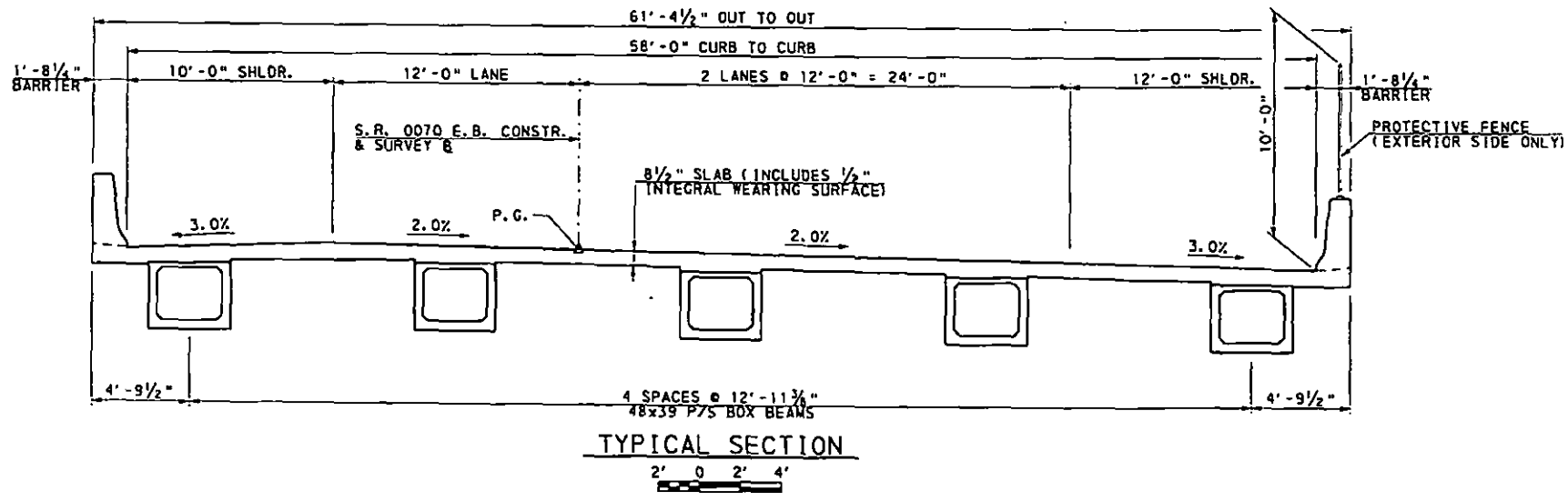


SURVEY BOOK #

DISTRICT	COUNTY	ROUTE	SECTION	SHEET
12-0	WASHINGTON	0070	T10	1 OF 1
SOUTH STRABANE TOWNSHIP/CITY OF WASHINGTON				
REVISION NUMBER	REVISIONS			DATE BY



FILE: 1018 SCANDLERS 1-7010556. PRJ: BRG. CADD: 11/10/10-1014 ED. dgp
 DATE: 24-Sep-2013 2:10:03



RATINGS SUMMARY WITH FWS
ADTT (2038) = 6626

		48/39 P/S SPREAD BOX					
		H20	HS20	ML-80	TK527	PHL-93	P-82
INVENTORY RATING (IR)	DISTRIBUTION FACTOR	1.190	1.190	1.190	1.190	1.190	--
	(SPAN) LOCATION (FT)	(1) 45.00	(1) 7.50	(1) 7.50	(1) 7.50	(1) 7.50	--
	LIMIT STATE	STR-I	STR-I	STR-I	STR-I	STR-I	--
RATING FACTOR		1.72V	1.25V	1.10V	1.11V	1.00V	--
OPERATING RATING (OR)	DISTRIBUTION FACTOR	1.190	1.190	1.190	1.190	1.190	1.190
	(SPAN) LOCATION (FT)	(1) 45.00	(1) 7.50	(1) 7.50	(1) 7.50	(1) 7.50	(1) 37.50
	LIMIT STATE	STR-II	STR-II	STR-II	STR-II	STR-IA	STR-II
RATING FACTOR		2.23V	1.62V	1.42V	1.44V	1.30V	1.01V

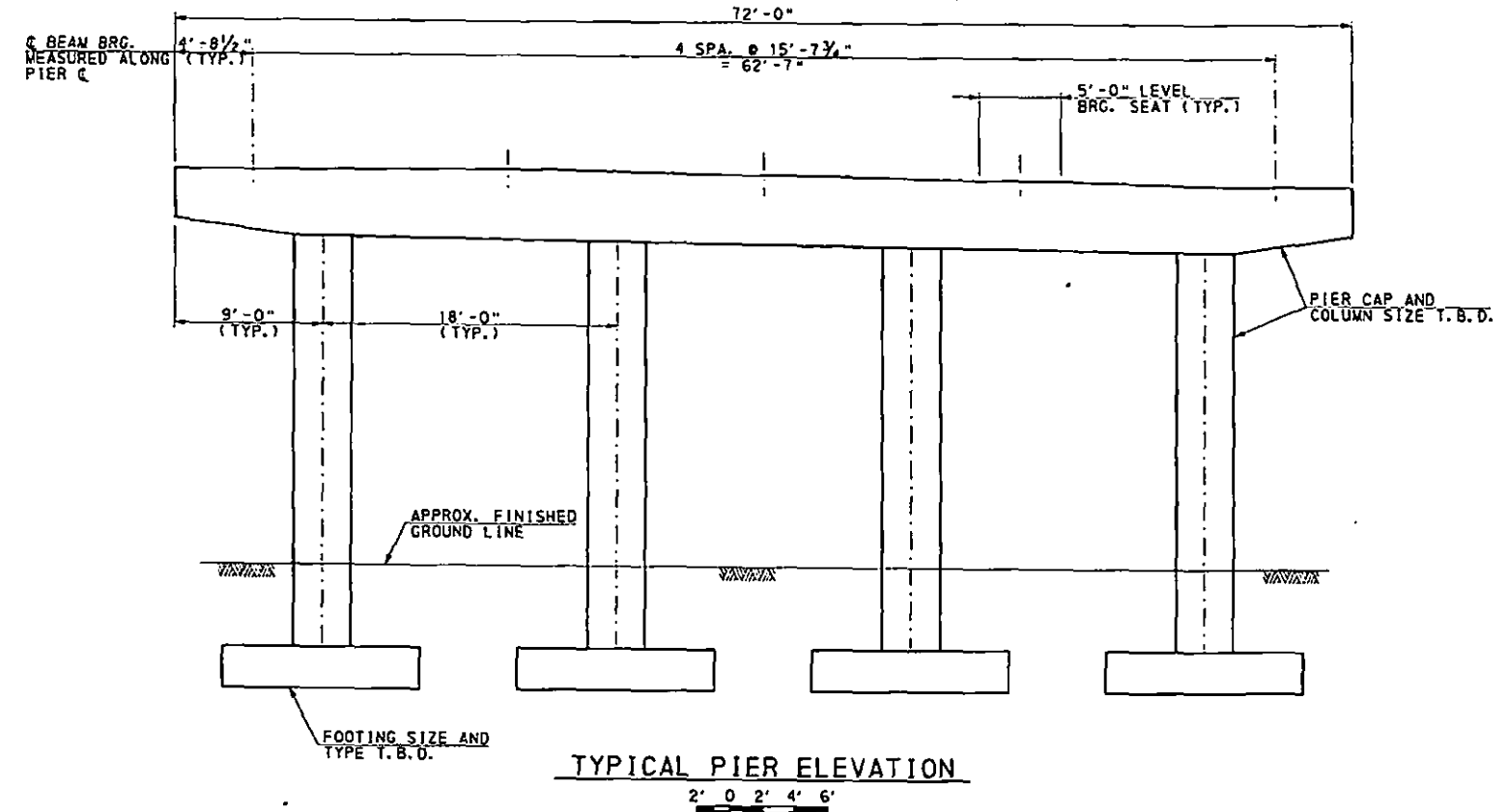
RATINGS SUMMARY WITHOUT FWS
ADTT (2038) = 6626

		48/39 P/S SPREAD BOX					
		H20	HS20	ML-80	TK527	PHL-93	P-82
INVENTORY RATING (IR)	DISTRIBUTION FACTOR	1.190	1.190	1.190	1.190	1.190	--
	(SPAN) LOCATION (FT)	(1) 45.44	(1) 7.50	(1) 7.50	(1) 7.50	(1) 30.00	--
	LIMIT STATE	STR-I	STR-I	STR-I	STR-I	STR-I	--
RATING FACTOR		1.73V	1.25V	1.10V	1.12V	1.01V	--
OPERATING RATING (OR)	DISTRIBUTION FACTOR	1.190	1.190	1.190	1.190	1.190	1.151
	(SPAN) LOCATION (FT)	(1) 45.44	(1) 7.50	(1) 7.50	(1) 7.50	(1) 7.50	(2) 17.50
	LIMIT STATE	STR-II	STR-II	STR-II	STR-II	STR-IA	STR-II
RATING FACTOR		2.24V	1.62V	1.43V	1.45V	1.31V	1.00V

RATING NOTES:

- BRIDGE LOAD RATINGS BASED ON LRFD METHOD.
- THE GIVEN DISTRIBUTION FACTOR IS THE VEHICULAR LIVE LOAD DISTRIBUTION FACTOR USED TO PRODUCE THE GIVEN RATING.
- SHEAR RATING FACTORS ARE FOLLOWED BY AN (V), MOMENT RATING FACTORS ARE FOLLOWED BY AN (M).
- IR = INVENTORY RATING
OR = OPERATING RATING
ML = MAXIMUM LEGAL LOAD (ML-80)
P-82 = PENNSYLVANIA PERMIT LOAD
TK527 = PENNSYLVANIA LEGAL LOAD FOR 5-7 AXLE DUMP TRUCK
FWS = FUTURE WEARING SURFACE

CRITICAL MEMBER: INTERIOR GIRDER
MAXIMUM FACTORED FLEXURAL RESISTANCE: 7095 KIP-FT
LOCATION: SPAN 2, 35.00 FT
MAXIMUM FACTORED SHEAR RESISTANCE: 357 KIP
LOCATION: SPAN 2, 4.56 FT



Mark	Description	By	Chk'd.	Recm'd.	Date
REVISIONS					

COMMONWEALTH OF PENNSYLVANIA
DEPARTMENT OF TRANSPORTATION

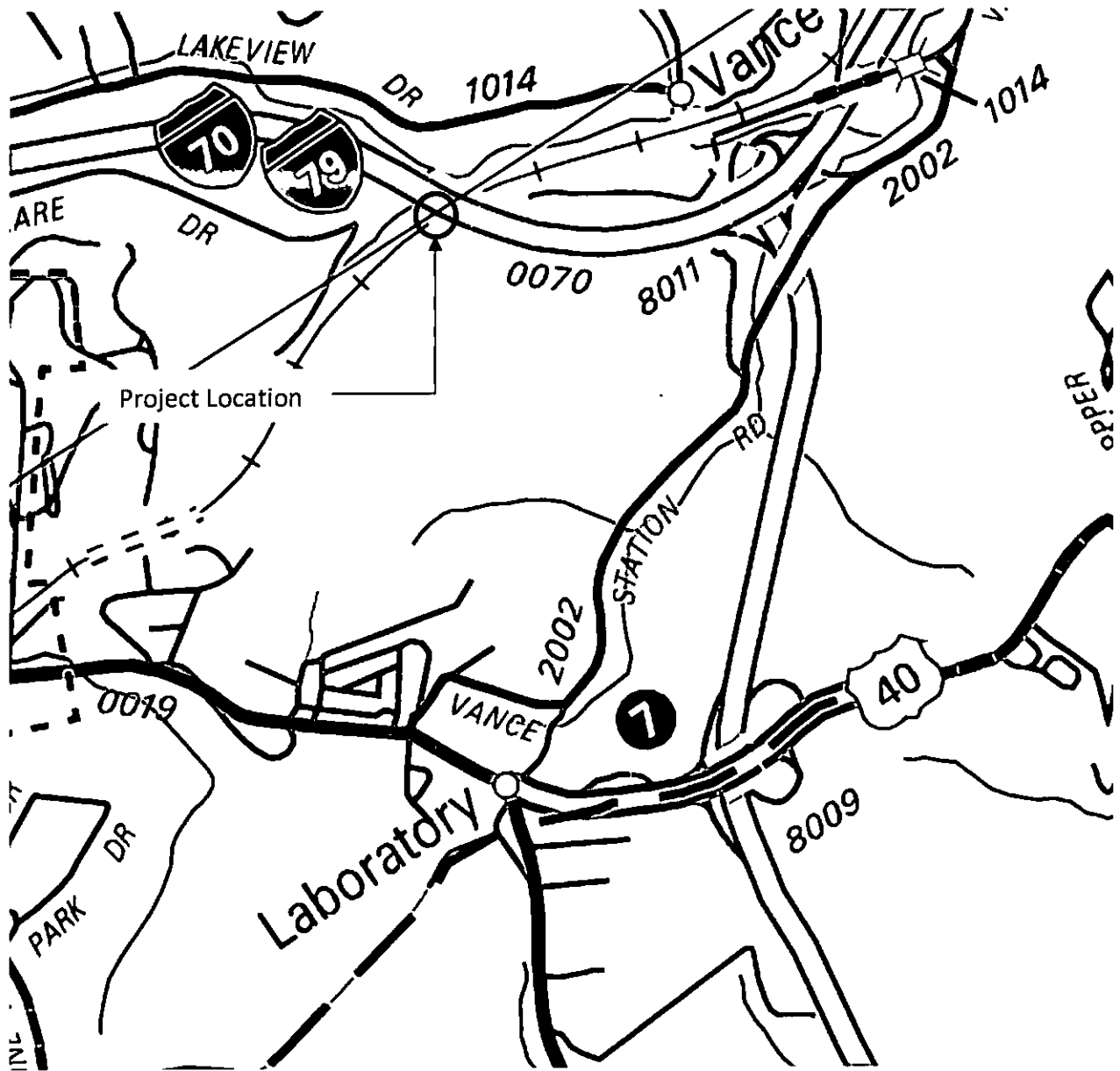
WASHINGTON COUNTY
S.R. 0070 SECTION T10
SEGMENT 0200 OFFSET 2030
S.R. 0070 E.B. STA. 1157+67.56
OVER CSXT/ALLEGHENY VALLEY RAILROAD
3-SPAN P/S CONC. SPREAD BOX BEAM BRIDGE
TS&L TYPICAL SECTIONS

RECOMMENDED _____ SHEET 2 OF 2

S-XXXXX

I:\PROJECTS\CADD\N02\BBS\1-70\N02\N02.PRU.MK\G.CADD\STRUCTURE\TS&L\SH107.TSL.TYPICAL.dgn
 9/25/2013 3:08:08 PM

DES: MJP | DWN: DPM | CHK: MJP



AAR No. 145 584 X
SR 70 Sec. T10
South Strabane Township,
Washington County
Exhibit "B"

RECEIVED
2013 NOV - 1 PH 3: 28
PA.P.U.C.
SECRETARY'S BUREAU

**BEFORE
PENNSYLVANIA PUBLIC UTILITY COMMISSION**

Application of the Department of Transportation of the Commonwealth of Pennsylvania for approval to widen and replace the existing eastbound bridge structure where State Route 0070, Section T10 crosses over a single track owned by CSX Transportation, Inc., and operated on by Allegheny Valley Railroad Company (DOT No. 145 584 X) in South Strabane Township, Washington County and the allocation of costs incident thereto.

Application
Docket No. _____

CERTIFICATE OF SERVICE

I hereby certify that I have this day served a true copy of the foregoing document upon the participants listed below, in accordance with the requirements of 52 Pa. Code §1.54, by first class mail, postage prepaid:

Mr. James Street
Allegheny Valley Railroad Company
519 Cedar Way
Suite 100, Building # 1
Oakmont, PA 15139

Ms. Mary E. Helicke
Washington County Commissioners
100 West Beau Street, Suite 702
Washington, PA 15301

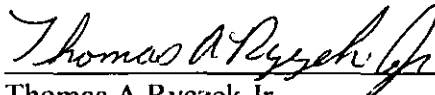
Mr. Matt Anderson
Allegheny Valley Railroad Company
519 Cedar Way
Suite 100, Building # 1
Oakmont, PA 15139

Mr. John J. Stickle
South Strabane Township
550 Washington Road
Washington, PA 15301

Mr. Leslie L. Scherr, P.E. Chief Engineer
Principle Engineer – Public Projects
CSX Transportation, Inc.
500 Water Street
Jacksonville, FL 32202

Mr. Jeff Winkle
Columbia Gas Transmission
4115 Cork-Bocktown Road
Clinton, PA 15026

Dated this 31 Day of October 2013


Thomas A Ryczek Jr.
Grade Crossing Administrator

RECEIVED
2013 NOV - 1 PM 3:28
PA.P.U.C.
SECRETARY'S BUREAU