

CAPTION SHEET

CASE MANAGEMENT SYSTEM

1. REPORT DATE: 00/00/00	:	
2. BUREAU: FUS	:	
3. SECTION(S):	:	
5. APPROVED BY:	:	4. PUBLIC MEETING DATE:
DIRECTOR:	:	00/00/00
SUPERVISOR:	:	
6. PERSON IN CHARGE:	:	7. DATE FILED: 06/18/07
8. DOCKET NO: A-110150 F0037	:	9. EFFECTIVE DATE: 00/00/00

PARTY/COMPLAINANT: 138 KV ON A 6.4 MILE TRANSMISSION LINE

RESPONDENT/APPLICANT: DUQUESNE LIGHT COMPANY

COMP/APP COUNTY:

UTILITY CODE: 110150

ALLEGATION OR SUBJECT

LETTER OF NOTIFICATION OF DUQUESNE LIGHT COMPANY FOR INCREASING THE VOLTAGE TO 138 KV ON A 6.4 MILE LONG DOUBLE CIRCUIT TRANSMISSION LINE IN INDIANA TOWNSHIP, HARMAR TOWNSHIP, SPRINGDALE TOWNSHIP, AND SPRINGDALE BOROUGH, ALLEGHENY COUNTY.

DOCUMENT
FOLDER

DOCKETED
JUL 02 2007



Duquesne Light

Our Energy...Your Power

Regina M. Sestak
Assistant General Counsel

Legal Department
411 Seventh Avenue, 8-2
Pittsburgh, PA 15219

Tel 412-393-1546
Fax 412-393-1418
rsestak@duqlight.com

June 14, 2007

ORIGINAL

RECEIVED
2007 JUN 18 AM 8:37
SECRETARY'S BUREAU

James J. McNulty, Secretary
Pennsylvania Public Utility Commission
P.O. Box 3265
Harrisburg, PA 17105-3265

A-110150 F0037

In re: Letter of Notification of Duquesne Light Company for Increasing the Voltage to 138 kV on a 6.4 Mile Long Double Circuit Transmission Line in Indiana Township, Harmar Township, Springdale Township, and Springdale Borough, Allegheny County

Dear Mr. McNulty:

Enclosed for filing are an original and six copies of the Letter of Notification of Duquesne Light Company for Increasing the Voltage to 138 kV on a 6.4 Mile Long Double Circuit Transmission Line in Indiana Township, Harmar Township, Springdale Township, and Springdale Borough, Allegheny County. Copies are being served in accordance with Commission Regulation 57.74(b).

Sincerely,

Regina M. Sestak
Attorney for Duquesne Light Company

DOCUMENT FOLDER

encs

cc: Robert Rosenthal, Director, Bureau of Fixed Utility Services (with enclosure)
All listed on Certificate of Service (with enclosures)

DOCKETED

JUL 02 2007

103

Before the
PENNSYLVANIA PUBLIC UTILITY COMMISSION

In re: Letter of Notification of Duquesne Light :
Company for Increasing the Voltage to 138 kV :
on a 6.4 Mile Long Double Circuit Transmission : Docket No. *A-110150*
Line in Indiana Township, Harmar Township, : Folder *0037*
Springdale Township, and Springdale Borough, :
Allegheny County :

**LETTER OF NOTIFICATION
OF DUQUESNE LIGHT COMPANY**

TO THE HONORABLE COMMISSION:

Duquesne Light Company ("Duquesne Light") and, pursuant to Commission Regulation 57.72(d)(1)(iv),(vi), 52 Pa. Code § 57.72(d)(1)(iv),(vi), files the within Letter of Notification of which the following is a statement:

INTRODUCTION

1. The name and address of the Applicant is:

Duquesne Light Company
411 Seventh Avenue
Pittsburgh, PA 15230-1930

2. Duquesne Light is a duly incorporated Pennsylvania public utility engaged in the distribution of electric service to the public, primarily within Allegheny and Beaver Counties, Pennsylvania, in an area of approximately 800 square miles having a combined population based on the 2000 census of approximately 1,327,057.

3. The name and address of Duquesne Light's attorney is:

Regina M. Sestak
Assistant General Counsel
Duquesne Light Company, 8-2
411 Seventh Avenue
Pittsburgh, PA 15219

DOCKETED
JUL 02 2007

SECRETARY'S BUREAU

2007 JUN 18 AM 8:38

RECEIVED

DOCUMENT
FOLDER

DESCRIPTION OF THE PROPOSED LINE

4. Duquesne Light proposes to increase the voltage of each circuit of an existing double circuit transmission line ("Colfax-Pine Creek") from 69 kilovolts ("kV") to 138kV. These circuits are presently identified as Colfax-Pine Creek No. 1 ("66112") and Colfax-Pine Creek No. 2 ("66113"). A 1.2-mile segment of 66113 (now known as "Z-66") is operating at 138kV by approval granted by the Commission at Docket No. A-110150 F0036 by Order adopted at Public Meeting held November 30, 2006, and entered December 5, 2006. A copy of the order is attached hereto and incorporated herein as Exhibit 1. The remaining 5.2 miles of circuit 66113, from Tower 1836 to Colfax Substation, is one circuit of Colfax-Pine Creek. The second circuit, 66112, is 6.4 miles in length and presently operates at the 69kV level. Currently, both of these circuits are temporarily out of service due to substation conversion work taking place at Pine Creek Substation and Colfax Substation. Colfax-Pine Creek presently connects the Duquesne Light Colfax Substation to the Duquesne Light Pine Creek Substation. A topographic map of the area showing the location of Colfax-Pine Creek is attached hereto and incorporated herein as Exhibit 2.

5. Colfax-Pine Creek consists primarily of lattice steel towers constructed in the 1920s. In 1968, Colfax-Pine Creek was upgraded for operation at 138kV. The upgrade consisted of replacing the steel crossarms with bowed laminated wood crossarms, modifying each tower with a single steel peak to accommodate one common shield wire for both circuits, tower and foundation reinforcement, and replacing the conductors and insulators. Upon completion of the upgrade, both circuits remained at 69kV until December 2006 when, by Commission order, the 1.2 mile portion of 66113 between Pine Creek Substation and Tower 1836, now known as Z-66, began operating at 138kV.

6. The height of the structures and the span lengths on Colfax-Pine Creek will remain the same. The height of the existing structures ranges between 84 feet and 124 feet above the ground. Existing span lengths range from 65 to 1492 feet,

with typical span lengths varying between 300 and 900 feet. The maximum span length on Colfax-Pine Creek is 1492 feet where it crosses the Pennsylvania Turnpike.

7. Colfax-Pine Creek will continue to be a three-phase alternating current transmission line. Each circuit of Colfax Pine Creek consists of three phase conductors with one shield wire common to both circuits. Each phase conductor is 853.7 kcmil 24/13 Aluminum Conductor Alloy Reinforced ("ACAR") conductor and the shield wire is a 7#8 Alumoweld conductor. A cross-sectional diagram showing the typical arrangement of the towers is attached hereto and incorporated herein as Exhibit 3.

8. New construction consisting of approximately 175 feet of new conductor on each circuit and one double circuit steel structure will be required to facilitate the proposed voltage upgrade to Colfax-Pine Creek. This construction will take place within Duquesne Light right-of-way located on property of Reliant Energy at the Cheswick generating station and will relocate the termination of Colfax-Pine Creek from Colfax Substation to the area known as the Cheswick East Yard. No other new construction, reconstruction, or modifications, except for routine maintenance items, will be required to increase the voltage from 69kV to 138kV on this line.

GENERAL DESCRIPTON OF ROUTE OF THE LINE

9. Colfax-Pine Creek begins at Pine Creek Substation and proceeds a distance of approximately 5.4 miles in a generally easterly direction through Indiana Township, Harmar Township and Springdale Township to tower 1807. At tower 1807 the line proceeds a distance of approximately 1.0 mile in a southerly direction through Springdale Township and Springdale Borough to Colfax Substation. Approximately 1,707 feet of the line is within Indiana Township, 17,470 feet of the line is within Harmar Township, 4,806 feet of the line is within Springdale Township and 3,665 feet of the line is within Springdale Borough, Allegheny County. Approximately 18% is located on existing 30-foot rights-of-way, 5% is located on existing 85-foot rights-of-

way, 53% is located on existing centerline rights-of-way, and 24% is located on Duquesne Light property.

BACKGROUND

10. Duquesne Light strives to ensure continuous reliable service from its transmission system for its entire service territory. Concerns have arisen regarding the limited transmission resources supplying the northeastern areas of Duquesne Light's service territory. Following engineering assessments, Duquesne Light has reevaluated the configuration of its current transmission system and determined that, *in order to ensure reliable service, upgrades are required. As a result, an* infrastructure plan has been developed to relieve loading along the Crescent-North path, provide critically needed contingency capacity, and improve voltage to heavily loaded substations on the 69 kV system while providing an alternative transmission supply to the City of Pittsburgh. Increasing the transmission supply from 69kV to 138kV will increase the capacity of the transmission system, decrease the number of transformations to 69kV and consequently reduce losses and investment in 69kV autotransformers, while addressing the need for extensive rehabilitation of aging substations. As a result, Duquesne Light's customers will benefit through increased reliability in this area.

STATEMENT OF NEED

11. Conversion of the Colfax-Pine Creek 69 kV lines is part of the overall plan to convert North and Pine Creek Substations to 138 kV supply. The conversion will improve low voltage conditions and overloading on area buses and lines under contingency situations, while extending the life of the transmission yard at Pine Creek Substation. *With the conversion partially complete, the summer peak load of over 140 MVA at Pine Creek Substation is only served from a 138 kV tap and the converted North-Pine Creek 138 kV line.* Connection of the Colfax-Pine Creek #2 line at 138 kV will complete the *final arrangement*, allowing Pine Creek to have three independent 138 kV sources. Moreover, the substation will be served from the two

independent 138 kV supplies following a single contingency event, including a tower line outage. The completion of Colfax-Pine Creek #1 will also complete the three-terminal 138 kV line to the new distribution substation, California, which is presently served from a radial line out from North Substation.

12. Additionally, conversion of the Colfax-Pine Creek 69 kV lines to 138 kV supply will allow the removal of the 69 kV terminations at Colfax Substation, facilitating the next phase of the 345 kV backbone project that will extend from Arsenal Substation to Logan's Ferry Substation. This 345 kV transmission line is a major milestone in the overall transmission enhancement plan.

13. Finally, Duquesne Light is a member of PJM Interconnection, L.L.C. ("PJM"). PJM is a regional transmission organization that coordinates the movement of wholesale electricity in all or parts of Delaware, Illinois, Indiana, Kentucky, Maryland, Michigan, New Jersey, North Carolina, Ohio, Pennsylvania, Tennessee, Virginia, West Virginia, and the District of Columbia. PJM has observed overload conditions following contingency scenarios in its 2009 transmission analysis. The conversion of Pine Creek Substation, including the Colfax-Pine Creek 69 kV lines, has been identified as a baseline upgrade through PJM's Regional Transmission Expansion Plan (RTEP). PJM has determined that this project will contribute to the mitigation of the identified overload conditions.

SAFETY CONSIDERATIONS

14. In 1968, Colfax-Pine Creek was modified and upgraded to increase the voltage from 69kV to 138kV. Although Colfax-Pine Creek continued to operate at 69kV since that time, the modifications were designed and constructed, and both circuits have been operated and maintained, to meet or exceed the requirements of the 6th Edition of the National Electrical Safety Code (NESC) for 138kV operation in effect at the time of the structural conversion to 138kV. The safety standards contained in the 6th Edition of the NESC relating to overhead electric supply lines were incorporated into the design and construction of the modifications implemented

in 1968 as minimum safety standards as to required clearances and structural loadings. In addition, the safety standards contained in the 2007 Edition of the NESC relating to overhead electric supply lines will be incorporated into the design and construction of the minor relocation described in paragraph 8. The operation and maintenance procedures for Colfax-Pine Creek conform to Duquesne Light's transmission and distribution construction standards and Duquesne Light's procedures for line clearance and vegetation management on rights-of-way. These standards meet or exceed all relevant NESC standards and all standards of the Federal Occupational Safety and Health Administration.

IN-SERVICE DATE

15. The proposed in-service date for the remaining portion of Colfax-Pine Creek circuit 66113 at 138kV is September 2007 and the proposed in service date for circuit 66112 is December 2007.

SERVICE OF LETTER OF NOTIFICATION

16. Copies of this Letter of Notification have been sent to all interested parties by certified mail, return receipt requested, as required by Commission Regulations 57.72(d)(3) and 57.74, 52 Pa. Code §§ 57.72(d)(3) and 57.74.

LETTER OF NOTIFICATION IN LIEU OF FULL SITING APPLICATION

17. Commission Regulation 57.72(d)(1)(iv), 52 Pa. Code §57.72(d)(1)(iv), provides:

A letter of notification may be filed with the Commission in lieu of the application process set forth in §§ 57.72-57.76 for the following:

...
(iv) A line for which the voltage is proposed to be increased above its present levels, so long as the size, character, design or configuration of the proposed HV line does not substantially alter the right-of-way.

...
(vi) An HV line having a proposed route of 2 miles or less.

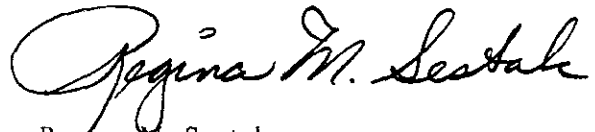
16. The proposed increase in voltage of the remainder of Colfax-Pine Creek will not substantially alter the right-of-way. The Line has existed and operated in its present location since the early 1920s and, with the exception of the 1985 addition of tubular steel pole 1149-1A, in its present configuration since 1966. The

size, character, design, or configuration of Colfax-Pine Creek will not change to increase the voltage of the Line. The existing right-of-way agreements are written for a "transmission system for the conveyance and distribution of electric current." The route of the transmission line will remain essentially unchanged except for the minor relocation at Colfax Substation. The existing rights-of-way widths of 30 feet and 85 feet will remain unchanged.

RELIEF REQUESTED

WHEREFORE, in consideration of the foregoing, it is requested that the Pennsylvania Public Utility Commission grant Duquesne Light Company approval to proceed with the proposed increase in voltage of the Line as described in this Letter of Notification.

Respectfully submitted,
DUQUESNE LIGHT COMPANY
By Counsel:



Regina M. Sestak
Attorney for Duquesne Light Company
Pa. I.D. # 23632

Duquesne Light Company
411 Seventh Avenue, 8-2
Pittsburgh, PA 15219

Telephone: (412) 393-1546
FAX: (412) 393-1418

**PENNSYLVANIA
PUBLIC UTILITY COMMISSION
Harrisburg, PA 17105-3265**

Public Meeting held November 30, 2006

Commissioners Present:

Wendell F. Holland, Chairman
James H. Cawley, Vice Chairman
Kim Pizzingrilli
Terrance J. Fitzpatrick

Letter of Notification of Duquesne Light Company filed pursuant to 52 Pa. Code Chapter 57 to increase the voltage on a 1.2-mile segment of an existing transmission line from 69 kV to 138 kV. The transmission line is located in Indiana Township, Allegheny County, Pennsylvania. Docket Number: A-110150 F0036

ORDER

BY THE COMMISSION:

On September 22, 2006, Duquesne Light Company (“Duquesne Light”) filed a Letter of Notification pursuant to 52 Pa. Code §57.72(d)(1) of the Commission’s transmission line siting regulation. Section 57.72 authorizes the abbreviated “Letter of Notification” siting application process in lieu of an application for the following:

- i) An HV line which is proposed to be located entirely on an existing transmission line right-of-way, so long as the size, character design, or configuration of the proposed HV line does not substantially alter the right-of-way.



- ii) An HV line which is proposed to be located entirely within a public road.
- iii) An HV line which is proposed to be located entirely within applicant's existing transmission line right-of-way and the property of the sole customer to be served by the line, so long as the size, character, design, or configuration of the proposed HV line does not substantially alter the right-of-way.
- iv) A line for which the voltage is proposed to be increased above its present levels, so long as the size, character, design, or configuration of the proposed HV line does not substantially alter the right-of-way.
- v) An HV line having a proposed route of 2 miles or less.

Copies of the siting application were served in accordance with Section 57.72(d)(3) on the Pennsylvania Department of Transportation, Pennsylvania Historical and Museum Commission, Department of Environmental Protection, Indiana Township Board of Supervisors, Allegheny County Council, and other interested parties. No protests were filed. No hearings were held.

Duquesne Light's Letter of Notification seeks approval to increase the voltage on a 1.2-mile segment of an existing double circuit transmission line ("the Line") from 69 kV to 138 kV. The existing two-circuit transmission line known as Colfax-Pine Creek Line ("Colfax-Pine Creek") connects the Duquesne Light Colfax Substation to the Duquesne Light Pine Creek Substation. The Line begins at Pine Creek Substation and proceeds a distance of 1.2 miles in a generally easterly direction. The entire 1.2 mile of the Line is located within Indiana Township, partially, on existing 30-foot rights-of-way, existing centerline rights-of-way, and on Duquesne Light's property.

Duquesne Light states that the Line is needed to support a new distribution substation, California Substation, as part of its plan to address the need for extensive rehabilitation of aging substations and increase reliability of its entire transmission system.

Duquesne Light states that no new construction, reconstruction, or modifications, except for routine maintenance items, will be required to increase the voltage from 69kV to 138kV on the Line. This is because the Line was modified and upgraded for operation at 138kV in 1966 but has continued to operate at 69kV since that time.

Duquesne Light states that the height of the structures and the span lengths on the Line will remain the same. The height of the existing structures ranges from 94 to 114 feet above the ground. The existing span lengths range from 65 to 1149 feet, with typical span lengths varying between 400 and 750 feet. The maximum span length on the Line is 1149 feet. The Line will continue to be a three-phase alternating current transmission line. Each circuit of Colfax Pine Creek (including the Line) consists of three phase conductors with one shield wire common to both circuits. Each phase conductor on the Line is 853.7 kcmil 24/13 Aluminum Conductor Alloy Reinforced (“ACAR”) conductor and shield wire is a 7#8 Alumoweld conductor.

According to Duquesne Light, the 1966 modifications were designed and constructed, and the Line has been operated and maintained, to conform to Duquesne Light’s transmission and distribution construction standards and Duquesne Light’s procedures for line clearance and vegetation management on rights-of-way. These standards meet or exceed all relevant National Electrical Safety Code standards and all standards of the Federal Occupational Safety and Health Administration.

Duquesne Light states the project has an in-service date of December 2006.

The formal Duquesne Light's Letter of Notification and manner in which it was filed conforms to the requirements of 52 Pa. Code § 57.72. Moreover, the Commission has reviewed the filing and does not find it to be inconsistent with the applicable law or Commission policy regarding transmission line siting; **THEREFORE,**

IT IS ORDERED:

That the Letter of Notification filed by Duquesne Light to increase the voltage on a 1.2-mile segment of an existing transmission line from 69 kV to 138 kV in Indiana Township, Allegheny County, Pennsylvania, is hereby approved.

BY THE COMMISSION,

James J. McNulty
Secretary

(SEAL)

ORDER ADOPTED: November 30, 2006

ORDER ENTERED: December 5, 2006

PROPRIETARY INFORMATION

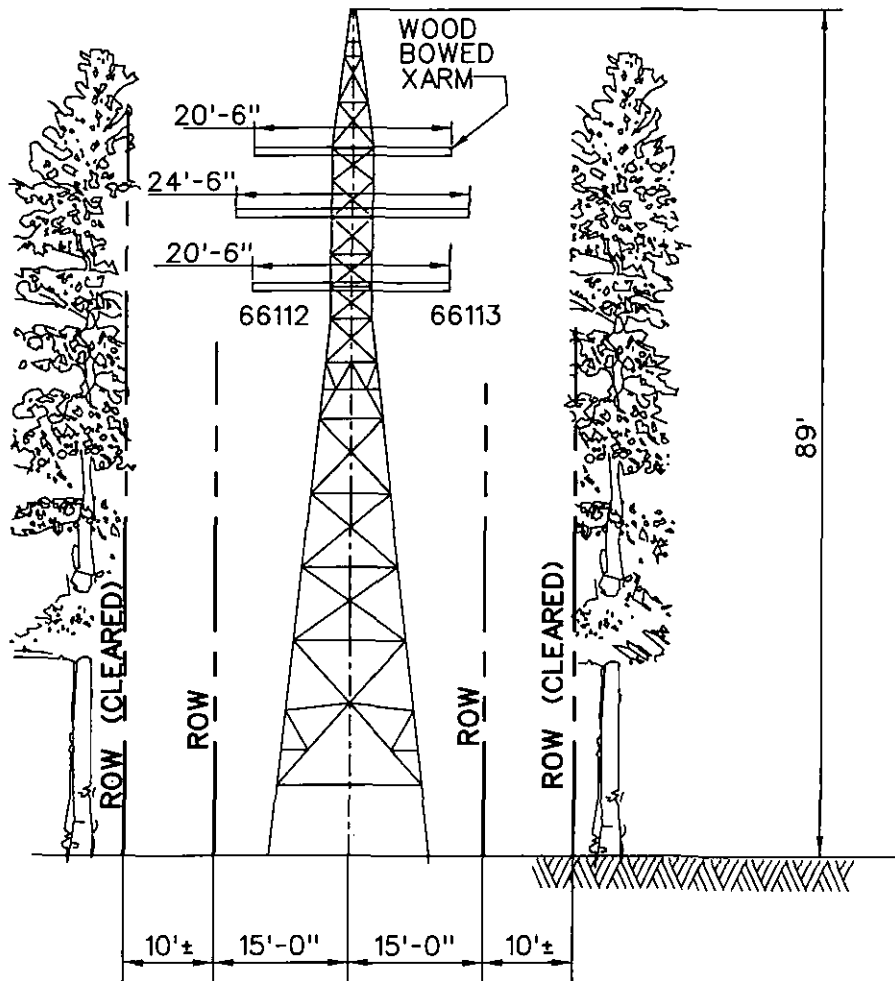
Docket Number A-110150 F-0037

Name of Document Exhibit 2 Map


Date Document Received 6-18-2007

DOCUMENT CONTAINS

PROPRIETARY INFORMATION



TYPICAL 30' RIGHT-OF-WAY (ROW) CROSS SECTION
FOR COLFAX-PINE CREEK

EXHIBIT 3	 gai consultants
RIGHT-OF-WAY TYPICAL CROSS SECTION COLFAX-PINE CREEK (TOWER 1818)	
DUQUESNE LIGHT COMPANY ALLEGHENY COUNTY, PA.	



Duquesne Light

Our Energy...Your Power

Regina M. Sestak
Assistant General Counsel

Legal Department
411 Seventh Avenue, 8-2
Pittsburgh, PA 15219

Tel 412-393-1546
Fax 412-393-1418
rsestak@duqlight.com

June 28, 2007

RECEIVED

JUN 28 2007

PA PUBLIC UTILITY COMMISSION
SECRETARY'S BUREAU

OVERNIGHT DELIVERY

Kay Best
Pennsylvania Public Utility Commission
P.O. Box 3265
Harrisburg, PA 17105-3265

In re: Letter of Notification of Duquesne Light Company for Increasing the Voltage to 138 kV on a 6.4 Mile Long Double Circuit Transmission Line in Indiana Township, Harmar Township, Springdale Township, and Springdale Borough, Allegheny County

Dear Ms. Best:

As promised, an original and six copies of the Notarized Affidavit for the Letter of Notification of Duquesne Light Company for Increasing the Voltage to 138 kV on a 6.4 Mile Long Double Circuit Transmission Line in Indiana Township, Harmar Township, Springdale Township, and Springdale Borough, Allegheny County, are enclosed. I apologize on behalf of Duquesne Light Company for the inadvertent error that led to the filing of a signed affidavit that was not notarized.

Sincerely,

Regina M. Sestak
Attorney for Duquesne Light Company


encs

cc: Robert Rosenthal, Director, Bureau of Fixed Utility Services (with enclosure)

COMMONWEALTH OF PENNSYLVANIA)
)
COUNTY OF ALLEGHENY) SS:

AFFIDAVIT

RONALD W. FEILING, being duly sworn according to law, deposes and says that he is a Supervisor, Engineering at Duquesne Light Company and the project engineer for the proposed voltage upgrade of the Line; that he is authorized to and does make this Affidavit for it; and that the facts set forth above are true and correct to the best of his knowledge, information and belief, and he expects Duquesne Light Company to be able to prove the same at any hearing hereof.


Ronald W. Feiling

Sworn to and subscribed
before me this 27th day
of June, 2007.


Notary Public

COMMONWEALTH OF PENNSYLVANIA
Notarial Seal
Mary Jane Hammer, Notary Public
City of Pittsburgh, Allegheny County
My Commission Expires Oct. 6, 2007
Member, Pennsylvania Association of Notaries

RECEIVED

JUN 28 2007

**PA PUBLIC UTILITY COMMISSION
SECRETARY'S BUREAU**

Before the
PENNSYLVANIA PUBLIC UTILITY COMMISSION

In re:

Letter of Notification of Duquesne Light :
Company for Increasing the Voltage to 138 kV :
on a 6.4 Mile Long Double Circuit Transmission : Docket No.
Line in Indiana Township, Harmar Township, : Folder
Springdale Township, and Springdale Borough, :
Allegheny County :

CERTIFICATE OF SERVICE

I hereby certify that I have this day served a true copy of the Letter of Notification and Exhibits upon the participants listed below in accordance with the requirements of 52 PA. Code §§57.72(d)(3) and 57.74(b) (relating to service of copies):

Daniel L. Taylor
Mayor
Indiana Township
941 Route 910
P.O. Box 788
Indianola, PA 15051

Board of Supervisors
Indiana Township
941 Route 910
P.O. Box 788
Indianola, PA 15051

Jeffrey Curti
Code Enforcement Officer
Indiana Township
941 Route 910
P.O. Box 788
Indianola, PA 15051

Daniel Anderson
Manager
Indiana Township
941 Route 910
P.O. Box 788
Indianola, PA 15051

Samuel Scarfone
Manager
Hampton Township Water Authority
P.O. Box 66
Allison Park, PA 15101

Mark Nicely
Manager
Fox Chapel Water Authority
255 Alpha Drive
Pittsburgh, PA 15238

John Dunlap
General Manager
Oakmont Water Authority
P.O. Box 73
Oakmont, PA 15139

Robert Exler
Manager
Municipal Authority of Township of Harmar
200 Pearl Avenue
Cheswick, PA 15024

Bill McChesney
Inspector
701 Freeport Road
Cheswick, PA 15024

Anthony Rozzano
Harmar Township Secretary
701 Freeport Road
Cheswick, PA 15024

Dan Onorato
Allegheny County Chief Executive
101 County Courthouse
436 Grant Street
Pittsburgh, PA 15219

Allegheny County Council
119 County Courthouse
436 Grant Street
Pittsburgh, PA 15219

Murry S. Gerber
Chairman, President and Chief Executive Officer
Equitable Resources
One Oxford Centre
Suite 3300
Pittsburgh, PA 15219

Terrence J. Murphy
President
Columbia Gas of Pennsylvania
501 Technology Drive
Canonsburg, PA 15317

Jay W. Dawson
Vice President Legal and Secretary
T.W. Phillips Gas and Oil Company
205 North Main Street
Butler, PA 16001

Thomas F. Farrell, II
Chairman, President & CEO
Dominion Resources
120 Tredegar Street
Richmond, VA 23219

H.R. Brown
President & CEO
North Pittsburgh Telephone Company
4008 Gibsonia Road
Gibsonia, PA 15044-9311

Ivan G. Seidenberg
Chairman & CEO
Verizon Communications
1095 Avenue of the Americas
New York, NY 10036

Paul J. Evanson
Chairman, President & CEO
Allegheny Energy, Inc.
800 Cabin Hill Drive
Greensburg, PA 15601-1689

Department of Environmental Protection
Policy Office
2063 15th Floor, RCSOB
Harrisburg, PA 17105-2063

Mitchell Rubin
Chairman Pennsylvania Turnpike Commission
P.O. Box 67676
Harrisburg, PA 17120

Allen D. Biehler
Secretary of the Department of Transportation
Room 1200 Transportation & Safety Building
Harrisburg, PA 17120

Wayne S. Spilove
Chairman of the Historical & Museum Commission
P.O. Box 1026
Harrisburg, PA 17120

James E. Anderson
96 Delaware Court
Cheswick, PA 15024

David P. Bennett III & Andrew C. Bennett
300 Business Center Drive
Cheswick, PA 15024

Bessemer & Lake Erie Railroad Company
277 Front Street, W., Floor 5
Toronto, Ontario

Rick A. & Susan H. Bursic
11 Lemon Lane
Cheswick, PA 15024

Albert E. & Jennie L. Celko
745 Maple Street
Harwick, PA 15049

Philip & Mary Cicolini
737 Maple Street
Harwick, PA 15049

Stephanie J. & Joseph R. Dabecco
566 Arbor Lane
Pittsburgh, PA 15236

Deer Creek Cemetery Association
1408 Allegheny Building
Pittsburgh, PA 15219

Richard C. & Michael P. Dietz
473 Rich Hill Road
Cheswick, PA 15024

FNP Development Company
1206 Beaver Road
Sewickley, PA 15143

Joseph D. & Catherine Galore
359 Locust Hill Road
Cheswick, PA 15024

Guys Run Properties, L.P.
3875 Old William Penn Highway
Murrysville, PA 15668

Harmar Business Center Associates II
327 Trade Street E, Suite 400
Charlotte, NC 28202

Harmar Business Center Owners Association
300 Business Center Drive
Cheswick, PA 15024

Hawkins Precast Concrete Products, LLC
100 Kim Lane
Verona, PA 15147

John A. & Kathleen T. Hribar
610 Driftwood Drive
Pittsburgh, PA 15238

McCrary W D Land Limited Partnership
1 Market Street
Pittsburgh, PA 15222

Phillip L. Moretti
114 Marshall Drive
Pittsburgh, PA 15215

Municipal Authority of the Township of Harmar
Bell Atlantic NYNEX
180 Washington Valley Road
Bedminster, NJ 07921

Joseph R. & Louise D. O'Donnell
360 Locust Hill Road
Cheswick, PA 15024

Orion Power Midwest LP
121 Champion Way
Canonsburg, PA 15317

Pennsylvania Turnpike Commission
RD 2
Cheswick, PA 15024

Carl & Dominica Plate
1200 Pillow Avenue
Harwick, PA 15049

Peter R. & Linda L. Shuss
969 Old Mill Road
Cheswick, PA 15024

Springdale Township VFD No. 1
P.O. Box #397
Harwick, PA 15049

St. Marks Lutheran Church of Springdale
Colfax and Pittsburgh Streets
Springdale, PA 15144

Ronald J. & Diane C. Stayduhar
364 Locust Hill Road
Cheswick, PA 15024

Syria Temple Holding Corporation
1877 Shriners Way
Cheswick, PA 15024

John M. Totten
359A Locust Hill Road
Cheswick, PA 15024

Pamela A. Wienskovich
837 McKinley Avenue
Harwick, PA 15049

Vicki L. & Glenn R. Wilson
1607 Beech Street
Cheswick, PA 15024

Wright Electro-Mechanical Corporation
1000 Cheswick Avenue
Cheswick, PA 15024

Dated this 14th day of June, 2007.



Regina M. Sestak
Pa. I.D. # 23632
Duquesne Light Company
411 Seventh Avenue
Mail Drop 8-2
Pittsburgh, PA 15219
Telephone: (412) 393-1546
FAX (412) 393-1418

RECEIVED
2007 JUN 18 AM 8:38
SECRETARY'S BUREAU

COMMONWEALTH OF PENNSYLVANIA
PENNSYLVANIA PUBLIC UTILITY COMMISSION
P. O. BOX 3265, HARRISBURG PA 17105-3265

IN REPLY PLEASE
REFER TO OUR FILE
Secretary
717-772-7777

July 2, 2007

A-110150F0037

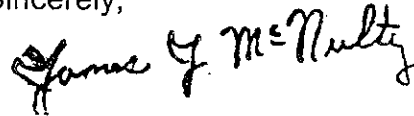
REGINA M. SESTAK
ASSISTANT GENERAL COUNSEL
DUQUESNE LIGHT
411 SEVENTH AVENUE 8-2
PITTSBURGH PA 15219

Dear Ms Sestak:

Receipt is acknowledged of the Letter of Notification of Duquesne Light Company, which has been captioned and docketed to the above number.

This matter will receive the attention of the Commission and you will be advised of any further necessary procedure.

Sincerely,



James J. McNulty
Secretary

JJM: ksb

DOCUMENT
FOLDER

DOCKETED
JUL 02 2007

DATE: July 2, 2007

SUBJECT: A-110150F0037

TO: Bureau of Fixed Utility Services

FROM: *KB* James J. McNulty, Secretary

**Letter of Notification of
Duquesne Light Company**

We attach hereto a copy of the Letter of Notification of Duquesne Light Company, which has been captioned and docketed to the above number.

May we have a report prepared by your Bureau for Public Meeting.

Attachment

cc: Law Bureau

ksb

DOCUMENT
FOLDER