

ConstellationSM

An Exelon Company

9600 Corporate Campus Drive, Suite 2000
Louisville, KY 40223
Phone: 502-426-4500
FAX: 502-426-8800
www.constellation.com

RECEIVED

November 6, 2014

NOV - 6 2014

Secretary
Pennsylvania Public Utility Commission
Keystone Building, 2nd Floor Room N201
Harrisburg, PA 17120

PA PUBLIC UTILITY COMMISSION
SECRETARY'S BUREAU

**RE: Notice of Change
Docket Nos. A-125063, A-125130, A-2013-2389792, A-125050 and A-125095
Integrys Energy Services, Inc. ("IES"), Compass Energy Services, Inc. ("CMP"),
Compass Energy Gas Services, LLC ("CMPG"), Constellation Energy Gas
Choice, Inc. ("CEGC"), and Constellation NewEnergy – Gas Division LLC
("CNEG")**

Dear Secretary:

It was announced on July 30, 2014 that Exelon Corporation ("Exelon") and Integrys Energy Group, Inc. entered into a definitive agreement for Exelon to purchase Integrys Energy Services, Inc., including its subsidiaries Compass Energy Services, Inc. and Compass Energy Gas Services, LLC. The transaction was conditioned on approval by the Federal Energy Regulatory Commission and the notification and reporting requirements under the Hart-Scott-Rodino Act. The transaction closed effective November 1, 2014.

Pursuant to 52 Pa. Code § 62.105, IES, CMP, CMPG, CEGC, and CNEG, submit this notice regarding material changes to information supplied in their competitive retail natural gas supplier applications.

Attachment A provides a post-closing retail energy entity organization chart. Attachment B provides updated natural gas regulatory contact information for IES, CMP, and CMPG. Attachment C provides an updated list of officers and directors for IES, CMP, and CMPG.

Exelon is the ultimate parent company of IES, CMP, and CMPG and provides financial backing as necessary to support their operations. In addition to Exelon assuming financial responsibility, any updated bonds, guarantees, or credit instruments will be provided as required. Exelon's annual reports can be viewed at the following weblink:

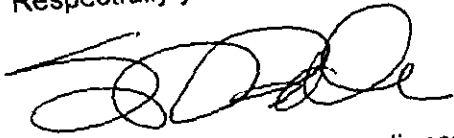
<http://www.exeloncorp.com/performance/investors/financialreports.aspx>

Exelon's SEC Form 10-K filings can be viewed at the following weblink:

<http://www.exeloncorp.com/performance/investors/secfilings.aspx>

Should you have any questions or need further information, please contact me at 502-214-6313 or by email at stephen.baker@constellation.com

Respectfully yours,

A handwritten signature in black ink, appearing to read 'S. Baker', with a stylized, looping flourish at the end.

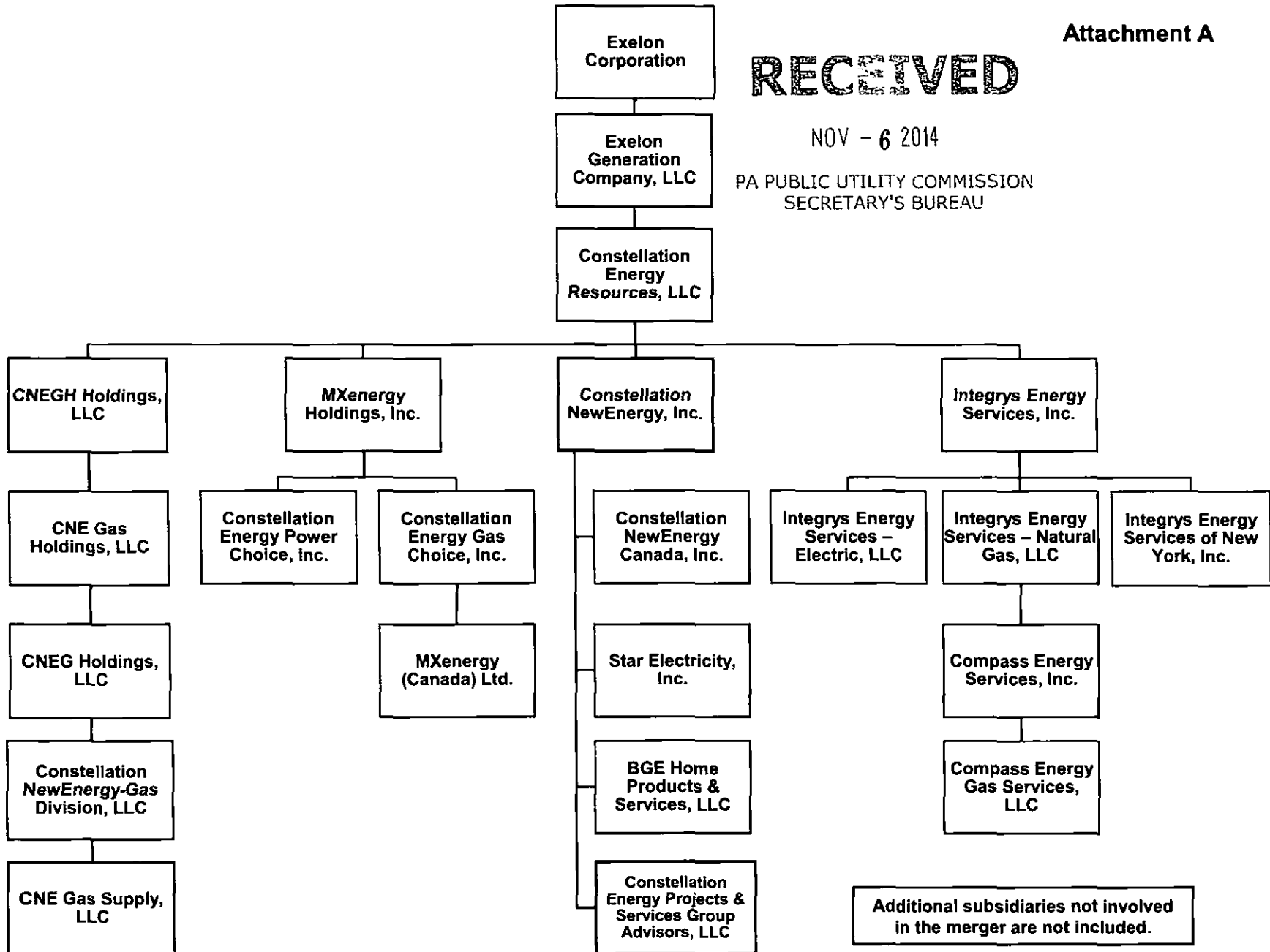
Stephen Baker, Legal Compliance

Enclosures

RECEIVED

NOV - 6 2014

PA PUBLIC UTILITY COMMISSION
SECRETARY'S BUREAU



Natural Gas Regulatory Contact Information

Darcy Fabrizio
Manager, State Government & Regulatory Affairs
N21 W23350 Ridgeview Parkway, Waukesha, WI 53188
Office: 262-506-6631
Fax: 262-506-6611
Email: darcy.fabrizius@constellation.com

RECEIVED

NOV - 6 2014

PA PUBLIC UTILITY COMMISSION
SECRETARY'S BUREAU

**Integrus Energy Services, Inc.
Compass Energy Services, Inc.
Compass Energy Gas Services, LLC**

Officers and Directors

<u>Name</u>	<u>Title</u>	<u>Business Location</u>
Joseph Nigro	Director	(1)
David C. Ellsworth	Director, Chief Operating Officer	(1)
Mark P. Huston	Director, President	(1)
Kevin Watson (a)	Chief Commercial Officer, Vice President	(4)
Bryan Wright	Chief Financial Officer	(1)
Thomas Terry	Vice President Taxes	(2)
Bruce G. Wilson	Secretary	(2)
Stacie M. Frank	Treasurer	(2)
Denis Eischen	Assistant Vice President Taxes	(2)
Robert Kleczynski	Assistant Vice President Taxes	(2)
Alexander Stavrou	Assistant Vice President Taxes	(1)
Nina L. Jezic	Assistant Secretary	(3)
Lawrence Bachman	Assistant Secretary	(2)
Paul R. Bonney	Assistant Secretary	(1)
Scott N. Peters	Assistant Secretary	(2)
Joseph Kirwan (a)	Assistant Secretary	(4)
Kathleen Abbot	Assistant Treasurer	(2)
Shane P. Smith	Assistant Treasurer	(1)

(a) Compass Energy Services, Inc. and Compass Energy Gas Services, LLC only

- (1) 100 Constellation Way, Baltimore MD 21202
- (2) 10 South Dearborn Street, Chicago IL 60603
- (3) 810 7th Avenue, Suite 400, New York NY 10019
- (4) 9960 Corporate Campus Drive, Suite 2000, Louisville KY 40223

RECEIVED

NOV - 6 2014

PA PUBLIC UTILITY COMMISSION
SECRETARY'S BUREAU

From: (502) 214-6313
Stephen Baker
CNE Gas
9960 Corporate Campus Dr
Suite 2000
Louisville, KY 40223

Origin ID: SDFA



Ship Date: 06NOV14
ActWgt: 1.0 LB
CAD: 104152322/NET3550

Delivery Address Bar Code



SHIP TO: (502) 426-4500

BILL SENDER

Secretary
Pennsylvania Public Utility Comm.
Commonwealth Keystone Building
400 North St., 2nd Floor, Room N201
HARRISBURG, PA 17120

Ref # 84125
Invoice #
PO #
Dept #

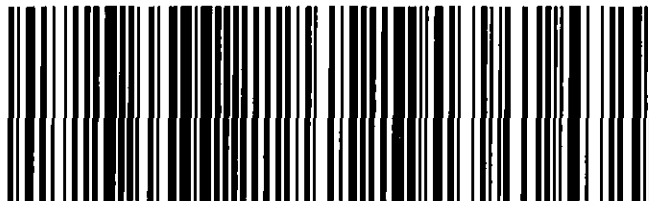
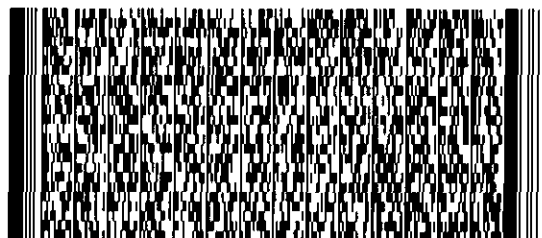
FRI - 07 NOV AA
STANDARD OVERNIGHT

TRK# 7717 6865 3280

0201

17120
PA-US
MDT

XH MDTA



522G1616C8AC9

After printing this label:

1. Use the 'Print' button on this page to print your label to your laser or inkjet printer.
2. Fold the printed page along the horizontal line.
3. Place label in shipping pouch and affix it to your shipment so that the barcode portion of the label can be read and scanned.

Warning: Use only the printed original label for shipping. Using a photocopy of this label for shipping purposes is fraudulent and could result in additional billing charges, along with the cancellation of your FedEx account number.

Use of this system constitutes your agreement to the service conditions in the current FedEx Service Guide, available on fedex.com. FedEx will not be responsible for any claim in excess of \$100 per package, whether the result of loss, damage, delay, non-delivery, misdelivery, or misinformation, unless you declare a higher value, pay an additional charge, document your actual loss and file a timely claim. Limitations found in the current FedEx Service Guide apply. Your right to recover from FedEx for any loss, including intrinsic value of the package, loss of sales, income interest, profit, attorney's fees, costs, and other forms of damage whether direct, incidental, consequential, or special is limited to the greater of \$100 or the authorized declared value. Recovery cannot exceed actual documented loss. Maximum for items of extraordinary value is \$1,000, e.g. jewelry, precious metals, negotiable instruments and other items listed in our Service Guide. Written claims must be filed within strict time limits, see current FedEx Service Guide.

RECEIVED

NOV - 6 2014

PA PUBLIC UTILITY COMMISSION
SECRETARY'S BUREAU