



Salsgiver, Inc.
www.salsgiver.com

301 Fifth Street
Freeport, PA 16229

RECEIVED

2015 APR -6 AM 11:20

PA P.U.C.
SECRETARY'S BUREAU

April 1, 2015

RE: Railroad Crossing Revisions
Location ID #148-858G
PUC Docket #A-2015-2469222
Salsgiver Crossing #21

To All Concerned:

Enclosed are revised drawings for the Railroad Crossing Location ID #148-858G Located in Center Township, Indiana County.

If you require any additional information, do not hesitate to contact me.

Thank you,

Amy Lightner-Brown
Permit Department
724 295-1970 ext 116
amyb@salsgiver.com

RECEIVED

2015 APR -6 AM 11:20

PA P.U.C.
SECRETARY'S BUREAU

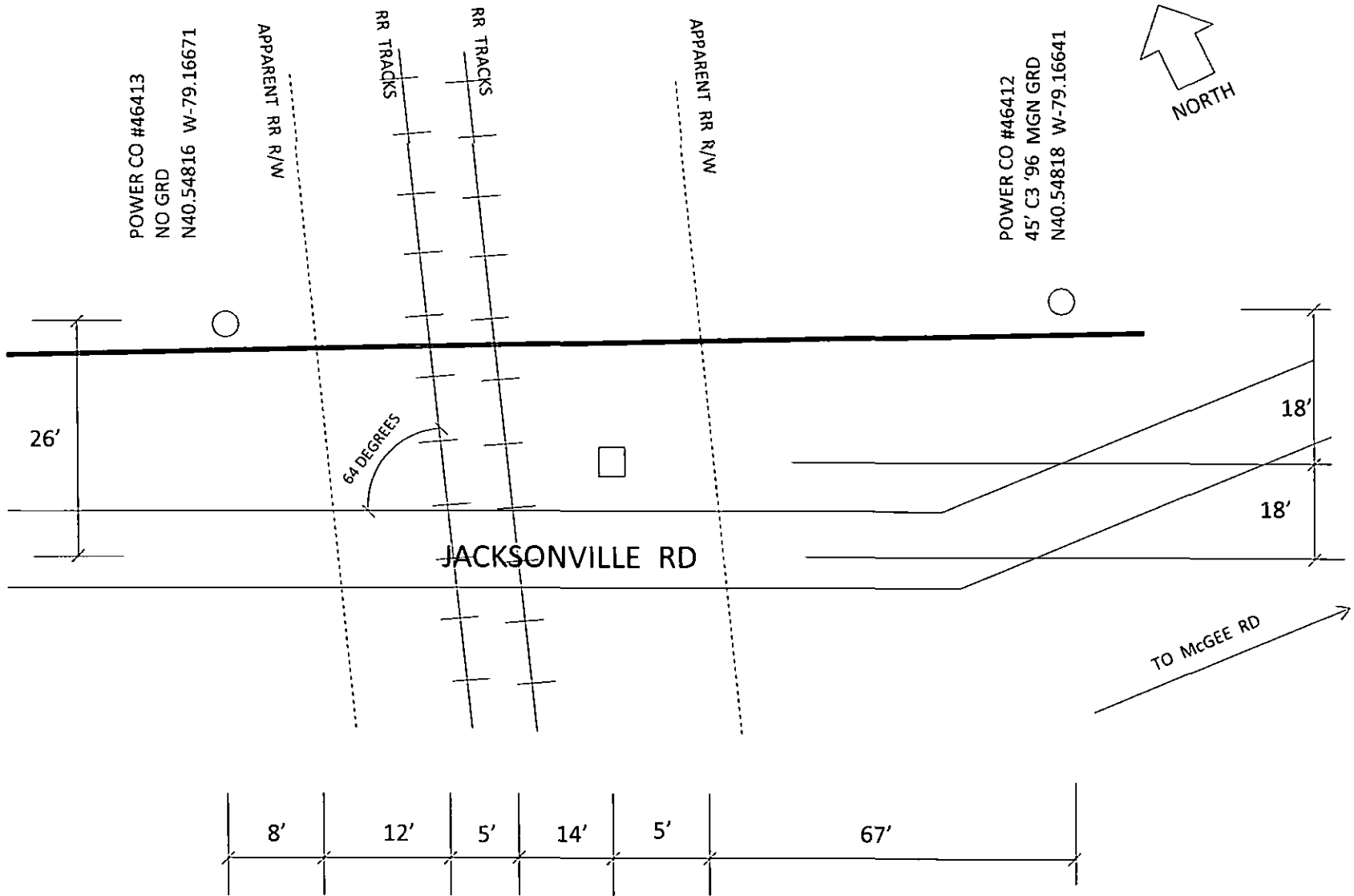
RAILROAD CROSSING SPREADSHEET LOCATION # 21 JACKSONVILLE RD EAST OF McGEE LN

LOCATION ID# 148-858G
AERIAL FIBER OPTIC CABLE INSTALLATION
JACKSONVILLE RD 300' WEST OF McGEE RD
AT GRADE CROSSING OF GENESSEE & WYOMING INC
(BUFFALO & PITTSBURGH RAILROAD)
CENTER TOWNSHIP, INDIANA COUNTY

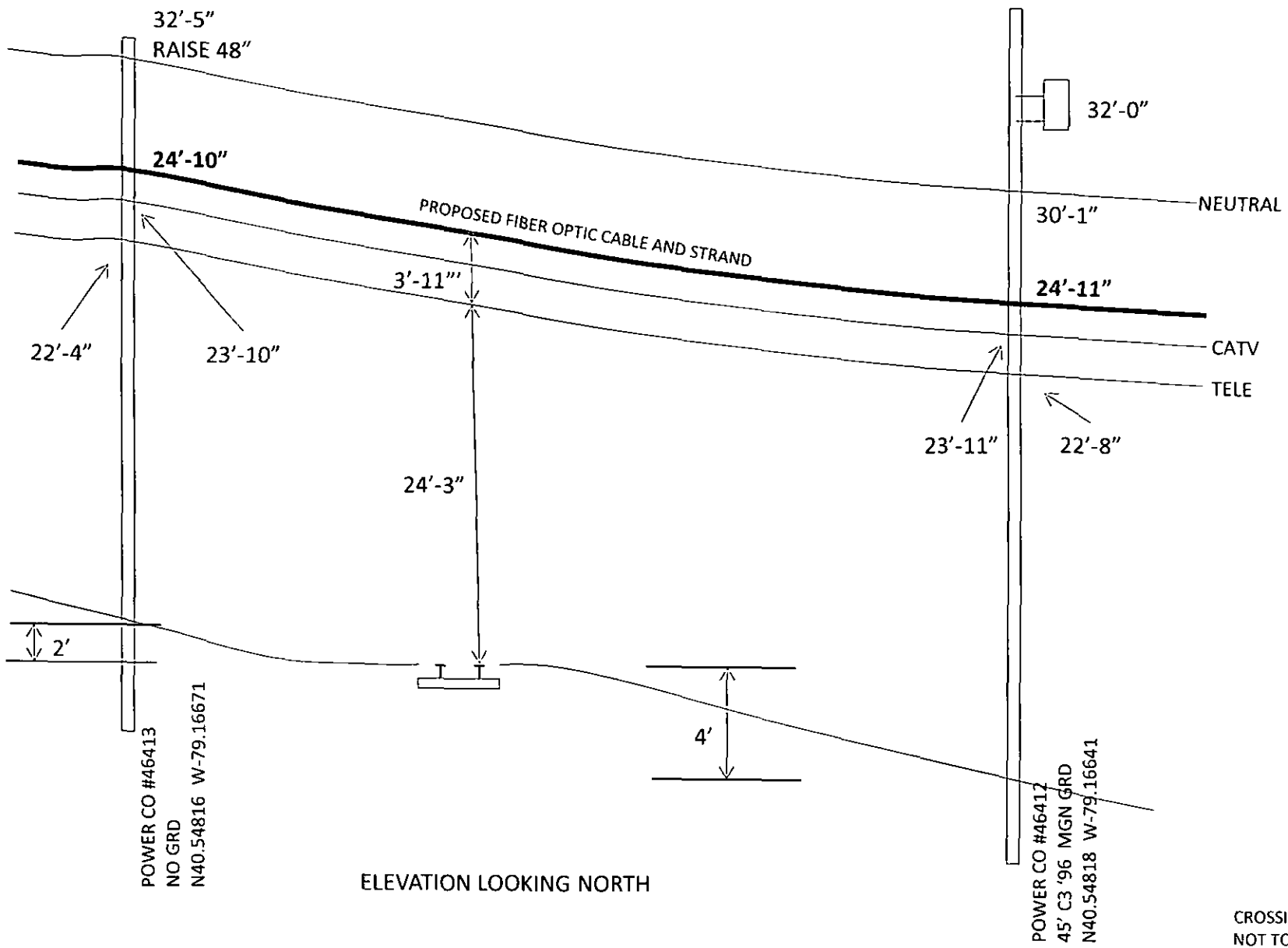
1. PLACE NEW FIBER OPTIC CABLE AND STRAND
12" ABOVE EXISTING CATV CABLE.
2. NEW FIBER OPTIC CABLE AND STRAND CLEARANCE
ABOVE RAILROAD TRACKS WILL BE 28'-2".

Exhibit A
Buffalo & Pittsburgh
Aerial Fiber Optic Cable
Salsgiver Communications
Crossing ID #148-858G
West of Homer City
Center Township, Indiana County
January 15, 2015

REQUIRED EXHIBIT FOR RAILROAD APPLICATION



PLAN VIEW



CROSSING 21
NOT TO SCALE
SHEET 3 OF 9

LOOKING EAST



CROSSING 21
NOT TO SCALE
SHEET 4 OF 9

LOOKING NORTH



CROSSING 21
NOT TO SCALE
SHEET 5 OF 9

LOOKING SOUTH



CROSSING 21
NOT TO SCALE
SHEET 6 OF 9

SIGN ON CROSSARM



SIGN ON CROSSARM SUPPORT

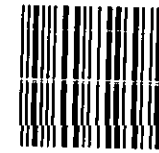


SIGN ON HUT AT CROSSING





1000



17105

U.S. POSTAGE
PAID
FREEPORT, PA
16229
APR 02 '15
AMOUNT

\$1.19

00082316-03

**Commonwealth of Pennsylvania
Pennsylvania Public Utility Commission
P.O. Box 3265
Harrisburg, PA 17105-3265**