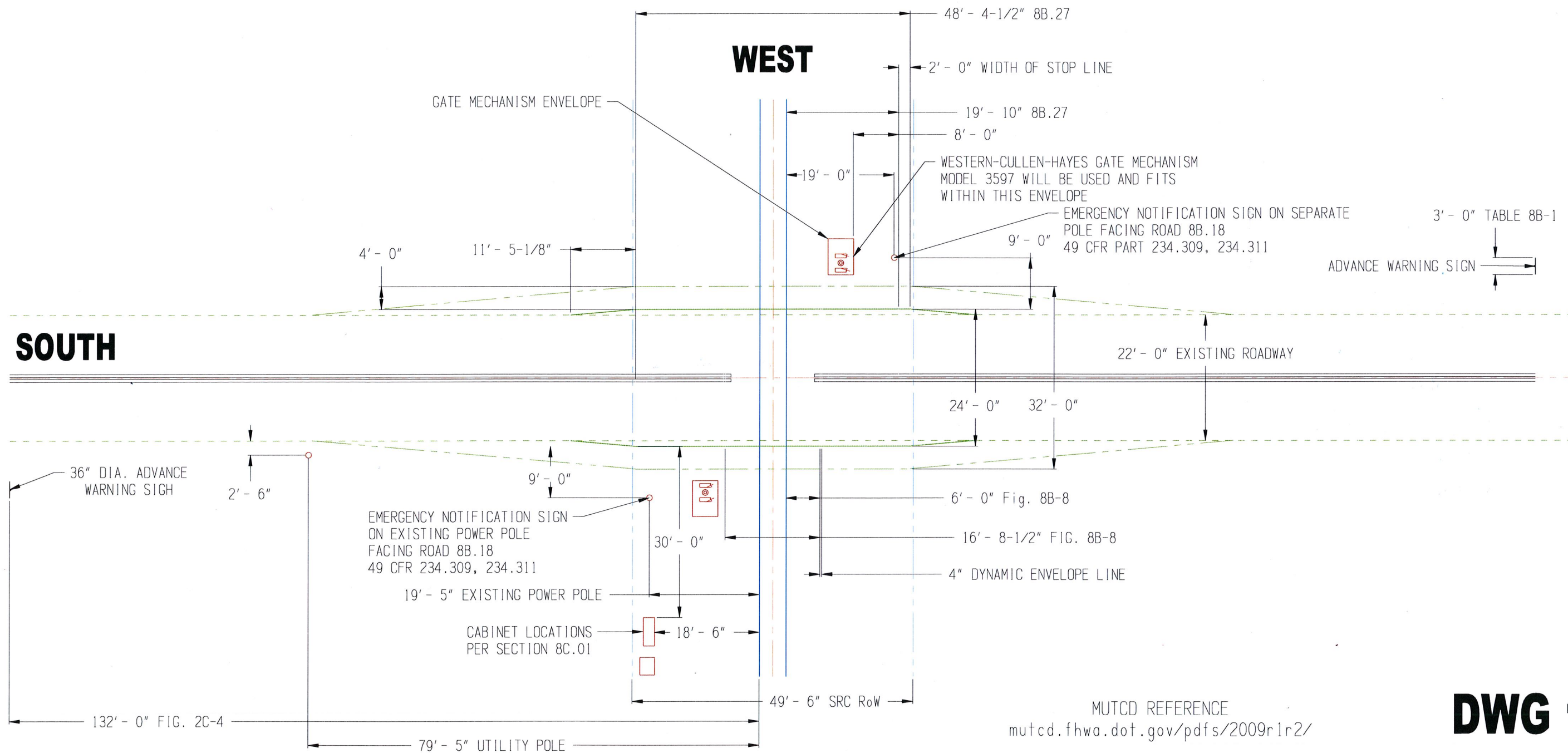
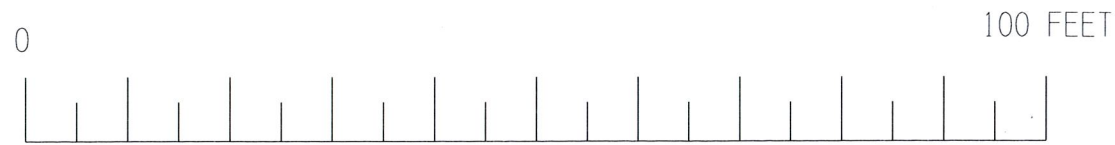


# PAVEMENT MARKINGS AND NEW ROAD PERIMETER



MUTCD REFERENCE  
[mutcd.fhwa.dot.gov/pdfs/2009r1r2/](http://mutcd.fhwa.dot.gov/pdfs/2009r1r2/)

## DWG 1 of 3

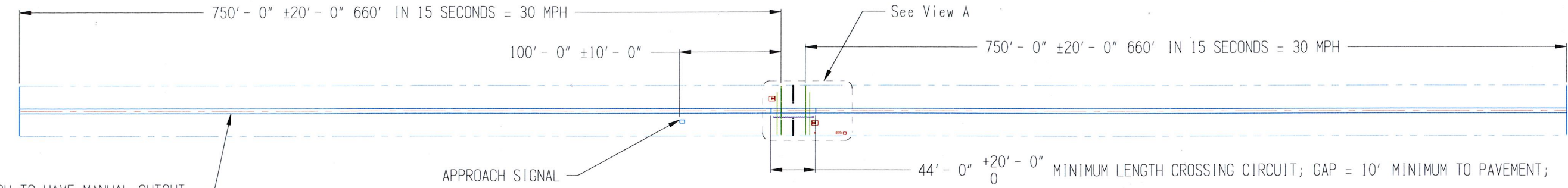
HYDRO. TEST TEMP.: 70F-120F	HYDRO. TEST PRESSURE:	MATERIAL:		STRASBURG RAIL ROAD	
HEAT TREATMENT:				DESCRIPTION: PARADISE LANE DOT 856455W	
WPS:	NDE:	TOLERANCE:	FINISH:	PART NAME: fairview xing	LAYOUT NAME: road layout and markings
	SCALE:	QUANTITY:	PAGE #: of	DRAWN BY: LW MOEDINGER	DATE: 9 Jul 2015

# GATES, CONTROL BOXES, BLOCKS

APPROACH BLOCK LENGTH BASED UPON  
10 TO 15 SECOND GATE DESCENT TIME

**WEST**

WEST APPROACH TO HAVE MANUAL CUTOUT;  
CUTOUT SHALL ACTIVATE APPROACH SIGNAL  
TO INDICATE STOP AND PROCEED;



WESTERN-CULLEN-HAYES GATE  
MODEL 3597 MECHANISM ENVELOPE

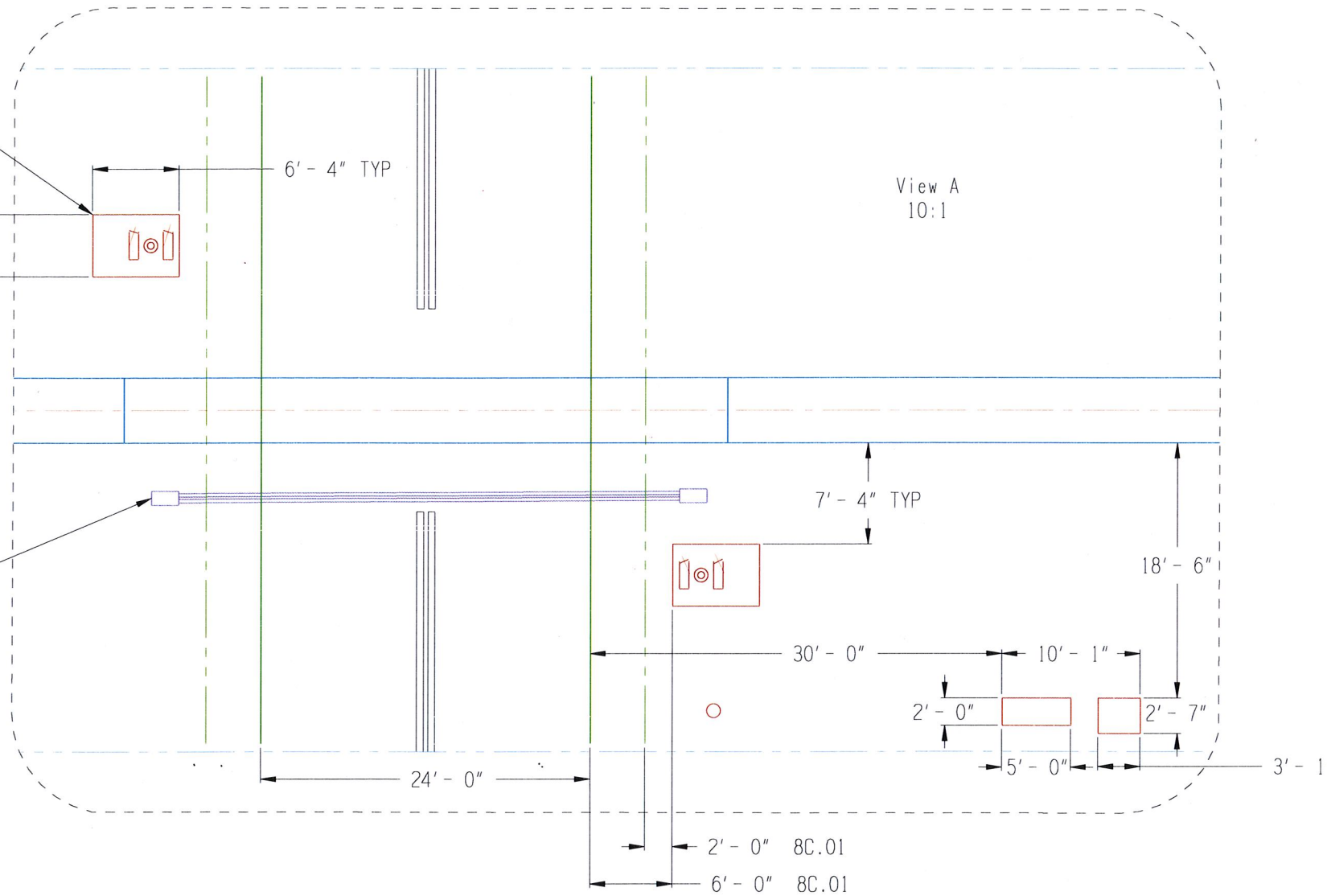
4' - 6" TYP

6' - 4" TYP

View A  
10:1

**WEST**

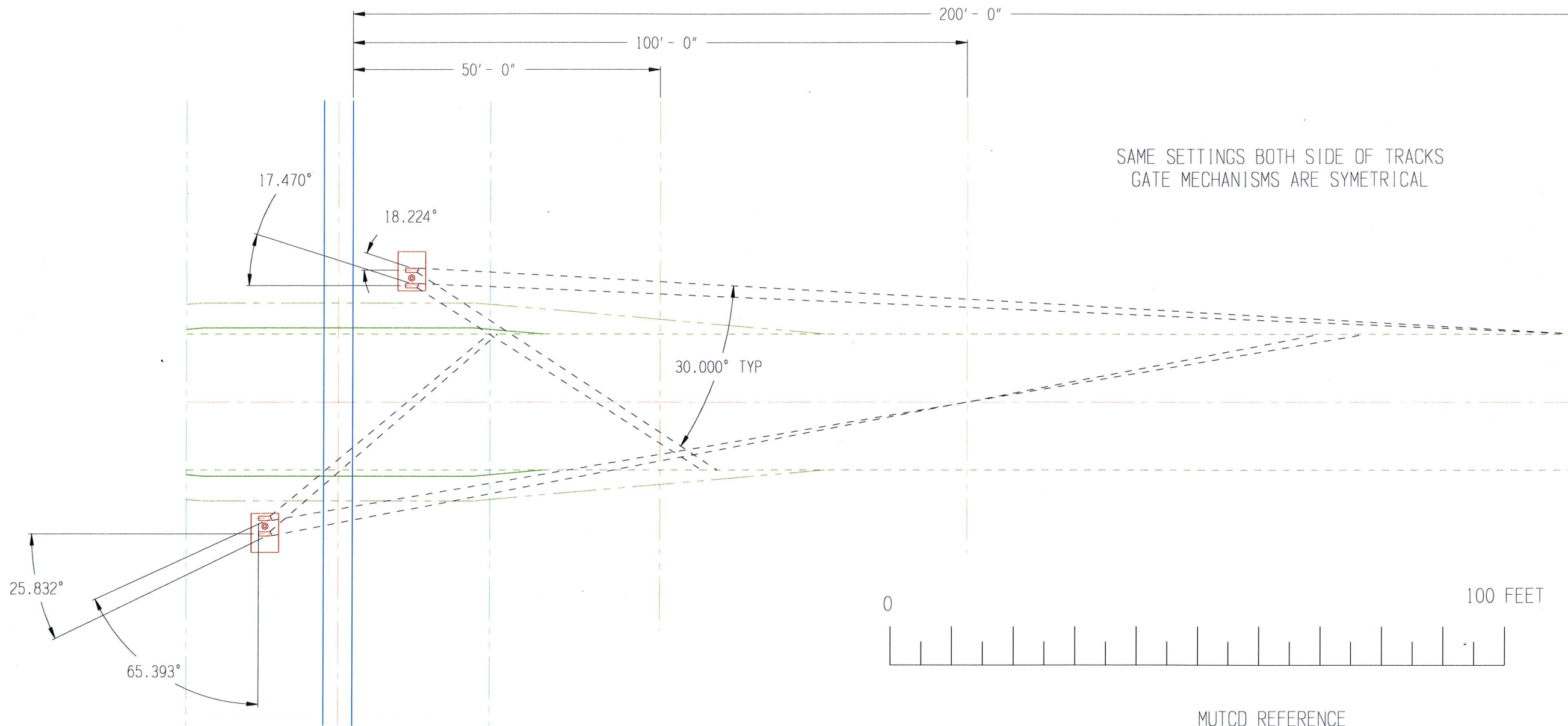
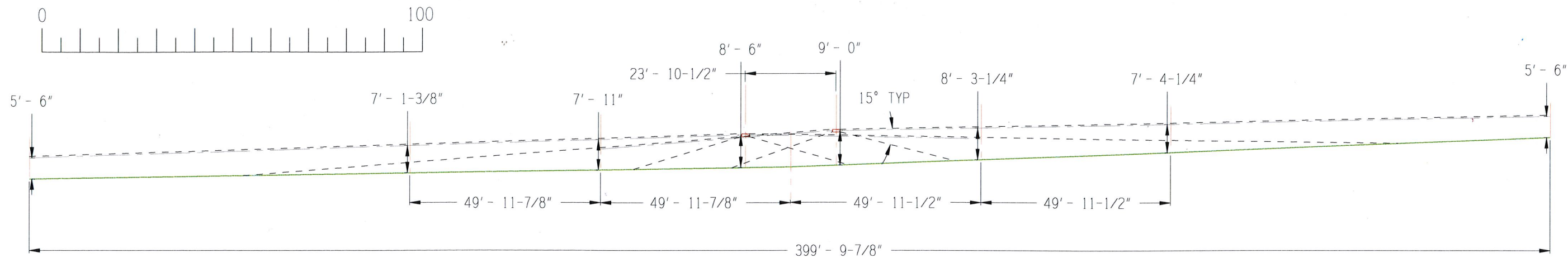
EXISTING CONDUIT



MUTCD REFERENCE  
[mutcd.fhwa.dot.gov/pdfs/2009r1r2/](http://mutcd.fhwa.dot.gov/pdfs/2009r1r2/)

**DWG 2 of 3**

HYDRO. TEST TEMP.: 70F-120F	HYDRO. TEST PRESSURE:	MATERIAL:		STRASBURG RAIL ROAD	
HEAT TREATMENT:				DESCRIPTION: PARADISE LANE DOT 856455W	
WPS:	NDE:	TOLERANCE:	FINISH:	PART NAME: fairview xing	LAYOUT NAME: gates and circuits
	SCALE:	QUANTITY:	PAGE #: of	DRAWN BY: LW MOEDINGER	DATE: 9 Jun 2015



W-C-H PART #5380 8 3/8" ROUNDEL  
30° HORIZONTAL SPREAD, 15° DOWN ANGLE

MUTCD REFERENCE  
[mutcd.fhwa.dot.gov/pdfs/2003r1/pdf-index.htm](http://mutcd.fhwa.dot.gov/pdfs/2003r1/pdf-index.htm)

**DWG 3 of 3**

HYDRO. TEST TEMP.: 70F-120F	HYDRO. TEST PRESSURE:	MATERIAL:	STRASBURG RAIL ROAD	
HEAT TREATMENT:			DESCRIPTION: PARADISE LANE DOT 856455W	
WPS:	NDE:	TOLERANCE:	FINISH:	PART NAME: fairview xing LAYOUT NAME: light angles
	SCALE:	QUANTITY:	PAGE #: of	DRAWN BY: LW MOEDINGER DATE: 19 MAY 2015