

**J. Larry Moyer**  
**370 W. Johnson Street (C-1)**  
**Philadelphia, PA 19144**  
**email: gtown73@hotmail.com; cell: 267-693-2633**

Mr. Jonathan M. Nase  
Pennsylvania Public Utility Commission  
Commonwealth Keystone Building  
3rd Floor, 9 East  
400 North Street  
Harrisburg , PA 17120

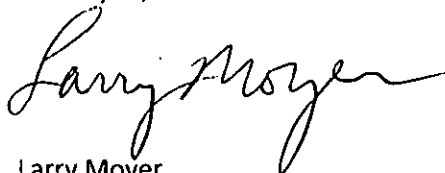
October 20, 2015

Mr. Nase:

For your information, I'm enclosing several documents that relate to PPL's recent "10-DAY SHUT-OFF NOTICE". The October bills show, first, that they fail to report verifiable, "real-time" aggregation between my two meters and, second, that the actual data in the several documents cannot be reconciled.

In addition, the "10-DAY SHUT-OFF NOTICE" does not account for a sum of \$738.98, which is to be credited to the Residential Account (06476-21001) by order of the Initial Decision on Remand.

Thank you,



Larry Moyer

Encl: "10-DAY SHUT-OFF NOTICE"  
Bill (Residential) dated October 9, 2015  
Bill ("Solar panels") dated October 12, 2015

**RECEIVED**  
**2015 OCT 22 PM 3:29**  
**PA P.U.C.**  
**SECRETARY'S BUREAU**



MB 01 005879 63379 E 14 A



LARRY MOYER  
370 W JOHNSON ST UNIT C1  
PHILADELPHIA PA 19144-3119

October 15, 2015

Bill Account No 06476-21001 - Residential Account

**10-DAY SHUT-OFF NOTICE**  
**AVISO DE SUSPENSION DE SERVICIO**

**Your Electric Service May Be Shut Off!**

Because your bill is past due, we will shut off the service to  
73 WOODS RD, KLINGERSTOWN PA 17941 on or after 8:00 AM on October 29, 2015.  
**We may act on this notice for up to 60 days. If your proposed service shut-off date falls on a Friday, the termination would occur the next business day.**

**We will NOT Shut off your electric service if you do ONE of the following:**

- Arrange to pay your past due bill of \$788.32 by:
  - Calling us at 800-358-6623, or
  - Visiting [ppl electric.com/payassist](http://ppl electric.com/payassist) and submitting a payment online.
- Pay the amount you owe on your payment plan. Call us at 800-358-6623 for this amount.
- Show us a paid receipt for the past due amount.
- Call 800-358-6623 right away if you believe your bill is wrong or if you cannot afford to pay your bill. You may be eligible for a payment agreement allowing you to pay off your arrears over time. You may also be eligible for a special assistance program such as **OnTrack**, which provides a reduced monthly bill based on your ability to pay. You may be required to show proof of your household's income in order to enroll in OnTrack.

**If we shut off your electric service, you may have to pay all of the following before we can turn your service on:**

Past Due Bill	\$788.32
Security Deposit	\$165.00
Turn-on Charge	\$30.00- \$50.00
<b>Total</b>	<b>\$968.32</b>

- To talk about your bill, please call our office at 1-800-358-6623.

RECEIVED  
2015 OCT 22 PM 3:30  
PA P.U.C.  
SECRETARY'S BUREAU

005879 1/2



Pay/Manage your account online at [pplectric.com](http://pplectric.com)

Questions? Please contact us by Oct 30. 1-800-DIAL-PPL (1-800-342-5775) M-F: 8am to 5pm

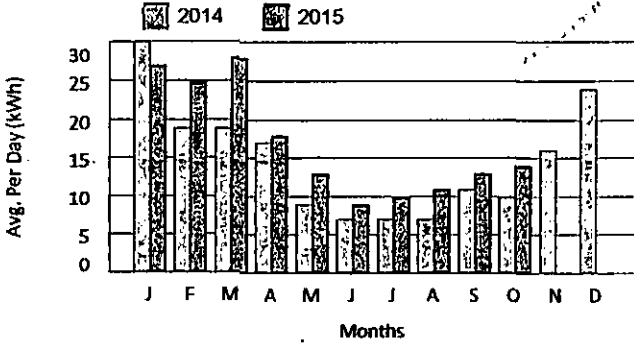
Bill Acct. No.	Due Date	Amount Due
06476-21001	Oct 30, 2015	\$865.65

**Your Electric Usage Profile**

Service to:  
LARRY MOYER  
73 WOODS RD  
KLINGERSTOWN, PA 17941

Meter: 49749430  
Your next meter reading is on or about Nov 10, 2015.

This section helps you understand your year-to-year electric use by month. Meter readings are actual unless otherwise noted.



Monthly Comparison	Days Billed	kWh	Average kWh/Day	Average Temp
Oct 2015	29	400	14	61F
Oct 2014	30	307	10	60F

Billing Period	Type	Reading
Oct 9	Actual	56449
Sep 10	Actual	56049
29 Days	kWh Billed	400

Yearly Comparison	Total Use	Avg. Monthly
Nov 2014 - Oct 2015	6271	523
Nov 2013 - Oct 2014	5404	450

**Billing Summary**

(Billing details on back)

Balance as of Oct 9, 2015	\$837.96
Charges:	
Total Distribution Charges	\$29.49
Total Generation & Transmission Charges	\$37.98
Total Other Charges	-\$39.78

Total Current Charges **\$865.65**

**Amount Due By Oct 30, 2015 \$865.65**

Account Balance **\$865.65**

**How To Shop For Electricity**

You can choose the company that supplies your electricity. Visit [papowerswitch.com](http://papowerswitch.com) or [www.oa.state.pa.us](http://www.oa.state.pa.us) for supplier offers. If you are shopping, know your contract expiration date.

Here's the information you need to shop:  
Bill Account Number: 06476-21001 Rate Schedule: RS (Residential)  
Current Supplier: PPL Electric Utilities

PPL Electric Utilities price to compare for your rate is \$0.09493 per kWh. This changes the 1st of June and December.

**Manage Your Account**

Pay Your Bill	Online Options (pplectric.com)
Online: Visit <a href="http://pplectric.com">pplectric.com</a>	- Report an outage/check outage status
Phone: Call 1-800-342-5775	- Make a payment, view your bill and usage history.
Mail: Use envelope provided	- Sign up for alerts.
Card: MasterCard, Discover, Visa or debit, call 1-800-672-2413 (service fee applies)	- Enroll in paperless billing, automatic bill pay, budget billing.
	- View your rate schedule at: <a href="http://pplectric.com/rates">pplectric.com/rates</a>

Correspondence:  
Customer Services, 827 Hausman Road, Allentown, PA 18104-9392

Other important information on the back of this bill →

Return this stub in the envelope provided with a check payable to PPL Electric Utilities.



MB 01 005779 58922 B 26 A



LARRY MOYER  
370 W JOHNSON ST UNIT C1  
PHILADELPHIA, PA 19144-3119

Bill Acct. No.	Due Date	Amount Due
06476-21001	Oct 30, 2015	\$865.65

Amount Enclosed:



PPL ELECTRIC UTILITIES  
2 NORTH 9TH STREET C-1 GENN  
ALLENTOWN, PA 18101-7575



1 56000086560000865652 0647621001

## Your Message Center

- The \$837.96 balance includes \$9.55 in prior late payment charges.
- With paperless billing, you can receive and pay your PPL Electric Utilities bills online. The process is free, quick, convenient and secure. To learn more or sign up, visit [ppl electric.com](http://ppl electric.com).
- Information about appliance energy use and tips on saving energy are available through the Energy Library on our Web site, [ppl electric.com/e-power](http://ppl electric.com/e-power)
- Before digging around your home or property, you should always call the state's One Call notification system to locate any underground utility lines. You can do this by simply dialing 811, which will connect you to the One Call system. Be safe and call 811 before you dig.
- Keep light bulbs and fixtures clean. Dust and dirt absorb light and can reduce light output by as much as half.
- Save postage and late charges - sign up for Automated Bill Payment.

## General Information

Generation prices and charges are set by the electric generation supplier you have chosen. The Public Utility Commission regulates distribution rates and services. The Federal Energy Regulatory Commission regulates transmission prices and services.

PPL Electric Utilities uses about \$12.90 of this bill to pay state taxes and about \$54.00 is used to pay the PA Gross Receipts Tax.

## Understanding Your Bill

**Customer Charge** - Monthly charge to recover costs of billing, meters and equipment.

**Distribution Charge** - Monthly charge to recover costs of local equipment used to deliver electricity from high-voltage transmission lines (see Transmission Charge) and safely step down voltage for use in your home or business.

**System Improvement Charge** - Monthly charge to recover costs for improving, repairing and replacing equipment that delivers electricity to your home or business.

**Generation Charge** - Monthly charge to recover the cost of the production or purchase of electricity.

**kWh (Kilowatt-hour)** - A measure of how much electricity your household uses. One kilowatt-hour equals the amount of electricity used by ten 100-watt lights left on for one hour.

**Rate RS** - Rate for service to a private home.

## Billing Details - (Bill Acct. 06476-21001)

Previous Balance	\$837.96
Balance as of Oct 9, 2015	\$837.96
<b>Charges for - PPL Electric Utilities</b>	
Residential Rate: RS for Sep 10 - Oct 9	
Distribution Charge:	
Customer Charge	14.18
400 kWh at 3.48700000¢ per kWh	13.94
System Improvement Charge at 5.00%	1.41
PA Tax Adj Surcharge at -0.13300000%	-0.04
Total Distribution Charges	\$29.49
Generation & Transmission Charges for Sep 10 - Oct 9	
Transmission Charge:	
400 kWh at 1.27900000¢ per kWh	5.12
Generation Charge:	
Capacity and Energy	
400 kWh at 8.21300000¢ per kWh	32.86
Total Generation & Transmission Charges	\$37.98
<b>Other Charges for PPL Electric Utilities</b>	
Late Payment Charge	9.74
Excess Credit	-49.64
Late Payment Charge	0.12
Total of Other Charges	\$-39.78
<b>Amount Due By Oct 30, 2015</b>	<b>\$865.65</b>
Account Balance	\$865.65



PPL Electric Utilities



Pay/Manage your account online at [ppllectric.com](http://ppllectric.com)



Questions? Please contact us by Oct 28. 1-800-DIAL-PPL (1-800-342-5775) M-F: 8am to 5pm

Adjusted Bill

Bill Acct. No.	Due Date	Amount Due
67277-97002	Oct 28, 2015	\$384.72

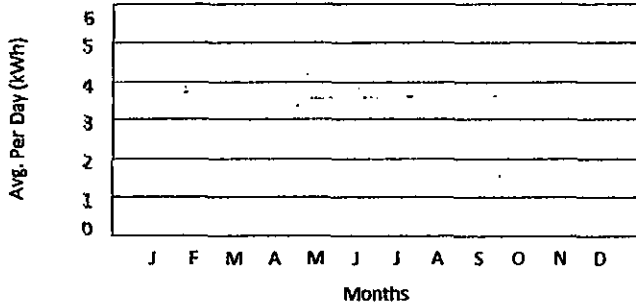
### Your Electric Usage Profile

Service to:  
LARRY MOYER  
73 WOODS RD, SOLAR PANELS  
KLINGERSTOWN, PA 17941

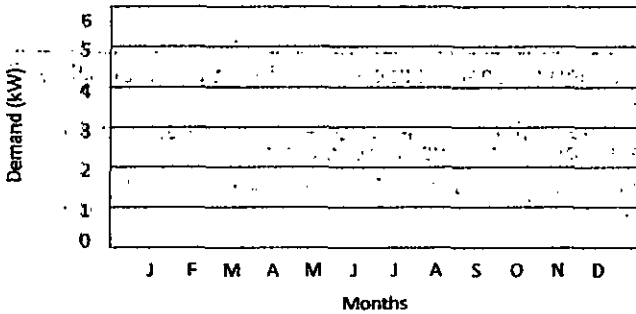
Your next meter reading is on or about Nov 10, 2015.

This section helps you understand your year-to-year electric use by month. Meter readings are actual unless otherwise noted.

2014 2015



2014 2015



### Billing Summary

(Billing details on back)

Balance as of Oct 12, 2015 **\$365.88**  
 Charges:  
 Total Distribution Charges **\$18.01**  
 Total Other Charges **\$0.83**

Total Current Charges **\$384.72**

**Amount Due By Oct 28, 2015 \$384.72**

Account Balance **\$384.72**

### How To Shop For Electricity

You can choose the company that supplies your electricity. Visit [papowerswitch.com](http://papowerswitch.com) or [www.oca.state.pa.us](http://www.oca.state.pa.us) for supplier offers. If you are shopping, know your contract expiration date.

Here's the information you need to shop:

Bill Account Number: **67277-97002** Rate Schedule: **G51**

Current Supplier: **PPL Electric Utilities**

PPL Electric Utilities price to compare for your rate is \$0.08982 per kWh. This changes the 1st of June and December.

### Manage Your Account

Pay Your Bill	Online Options ( <a href="http://ppllectric.com">ppllectric.com</a> )
Online: Visit <a href="http://ppllectric.com">ppllectric.com</a>	- Report an outage/check outage status
Phone: Call 1-800-342-5775	- Make a payment, view your bill and usage history.
Mail: Use envelope provided	- Sign up for alerts.
Card: MasterCard, Discover, Visa or debit, call 1-800-672-2413 (service fee applies)	- Enroll in paperless billing, automatic bill pay, budget billing.
	- View your rate schedule at: <a href="http://ppllectric.com/rates">ppllectric.com/rates</a>
<b>Correspondence:</b> Customer Services, 827 Hausman Road, Allentown, PA 18104-9392	

Other important information on the back of this bill →

Return this stub in the envelope provided with a check payable to PPL Electric Utilities.



PPL Electric Utilities

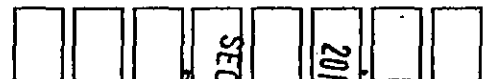
AB 01 003971 60750 B 17 C



LARRY MOYER  
370 W JOHNSON ST UNIT C1  
PHILADELPHIA, PA 19144-3119

Bill Acct. No.	Due Date	Amount Due
67277-97002	Oct 28, 2015	\$384.72

Amount Enclosed:



PPL ELECTRIC UTILITIES  
2 NORTH 9TH STREET CHERRY BEND  
ALLENTOWN, PA 18101



RECEIVED  
2015 OCT 22 PM 3:30  
SECRETARY'S BUREAU

1 7800003847280000384724 6727797002

## Your Message Center

- With paperless billing, you can receive and pay your PPL Electric Utilities bills online. The process is free, quick, convenient and secure. To learn more or sign up, visit [ppl electric.com](http://ppl electric.com).
- Before digging around your home or property, you should always call the state's One Call notification system to locate any underground utility lines. You can do this by simply dialing 811, which will connect you to the One Call system. Be safe and call 811 before you dig.
- Save postage and late charges - sign up for Automated Bill Payment.

## Billing Details - (Bill Acct. 67277-97002)

Page 2

Previous Balance	\$365.88
Balance as of Oct 12, 2015	\$365.88
<b>Charges for - PPL Electric Utilities</b>	
General Service Rate: GS1 for Sep 10 - Oct 9	
Distribution Charge:	
Customer Charge	16.00
Smart Meter Rider - Phase 2	0.16
Competitive Enhancement Rider	0.04
System Improvement Charge at 5.00%	0.81
PA Tax Adj Surcharge at -0.13300000%	-0.02
PA Sales Tax	1.02
<b>Total Distribution Charges</b>	<b>\$18.01</b>
<b>Other Charges for PPL Electric Utilities</b>	
Late Payment Charge	0.83
<b>Total of Other Charges</b>	<b>\$0.83</b>
<b>Amount Due By Oct 28, 2015</b>	<b>\$384.72</b>
Account Balance	\$384.72

## General Information

Generation prices and charges are set by the electric generation supplier you have chosen. The Public Utility Commission regulates distribution rates and services. The Federal Energy Regulatory Commission regulates transmission prices and services.

PPL Electric Utilities uses about \$5.41 of this bill to pay state taxes and about \$22.63 is used to pay the PA Gross Receipts Tax.

## kWh Use By Meter

Reading Dates		Meter Number	Meter Constant	Meter Reading		Kilowatt Hours
Previous	Present			Previous	Present	
Sep 10	Oct 9	10069153	1	79977	79977	0
Days Billed: 29					Total	0

## Understanding Your Bill

**Act 129 Compliance Rider** - Monthly charge to recover costs for energy efficiency and conservation programs approved by the PUC.

**Competitive Enhancement Rider** - Monthly charge to recover costs to support shopping for retail electricity supply.

**Customer Charge** - Monthly charge to recover costs of billing, meters and equipment.

**System Improvement Charge** - Monthly charge to recover costs for improving, repairing and replacing equipment that delivers electricity to your home or business.

**kWh (Kilowatt-hour)** - A measure of how much electricity your household uses. One kilowatt-hour equals the amount of electricity used by ten 100-watt lights left on for one hour.

**Late Payment Charge** - Charge added if you do not pay your bill by the due date.

**Smart Meter Rider** - Monthly charge to recover costs associated with the smart meter programs approved by the PUC.

**State Tax Adjustment Surcharge** - Monthly charge or credit to reflect changes in various state taxes. The surcharge may vary by bill component.

**Type(s) of Meter Readings:**

**Actual** - Measures your monthly electricity use based on an actual reading.

\*Federal I.D. 23-0959590