



PENNSYLVANIA
AMERICAN WATER

Susan Simms Marsh
Deputy General Counsel

Deputy General Counsel
800 Hershey Park Drive
Hershey PA 17033
P (717) 531-3208
F (717) 531-3399
susan.marsh@amwater.com

November 2, 2015

Rosemary Chiavetta, Secretary
Pennsylvania Public Utility
Commission
Commonwealth Keystone Building
400 North Street
Harrisburg, PA 17105-3265

**In re: Pennsylvania-American Water Company – Wastewater Division and
Lower Allen Township, et al. Assignment and Assumption of Agreement at
Docket No. U-2015-2508365**

Dear Ms. Chiavetta:

In response to Sean Donnelly's letter dated October 27, 2015, enclosed are the color maps which are required to complete the responses to Data Requests A-5 and A-7 regarding the above referenced docket number.

Sincerely,

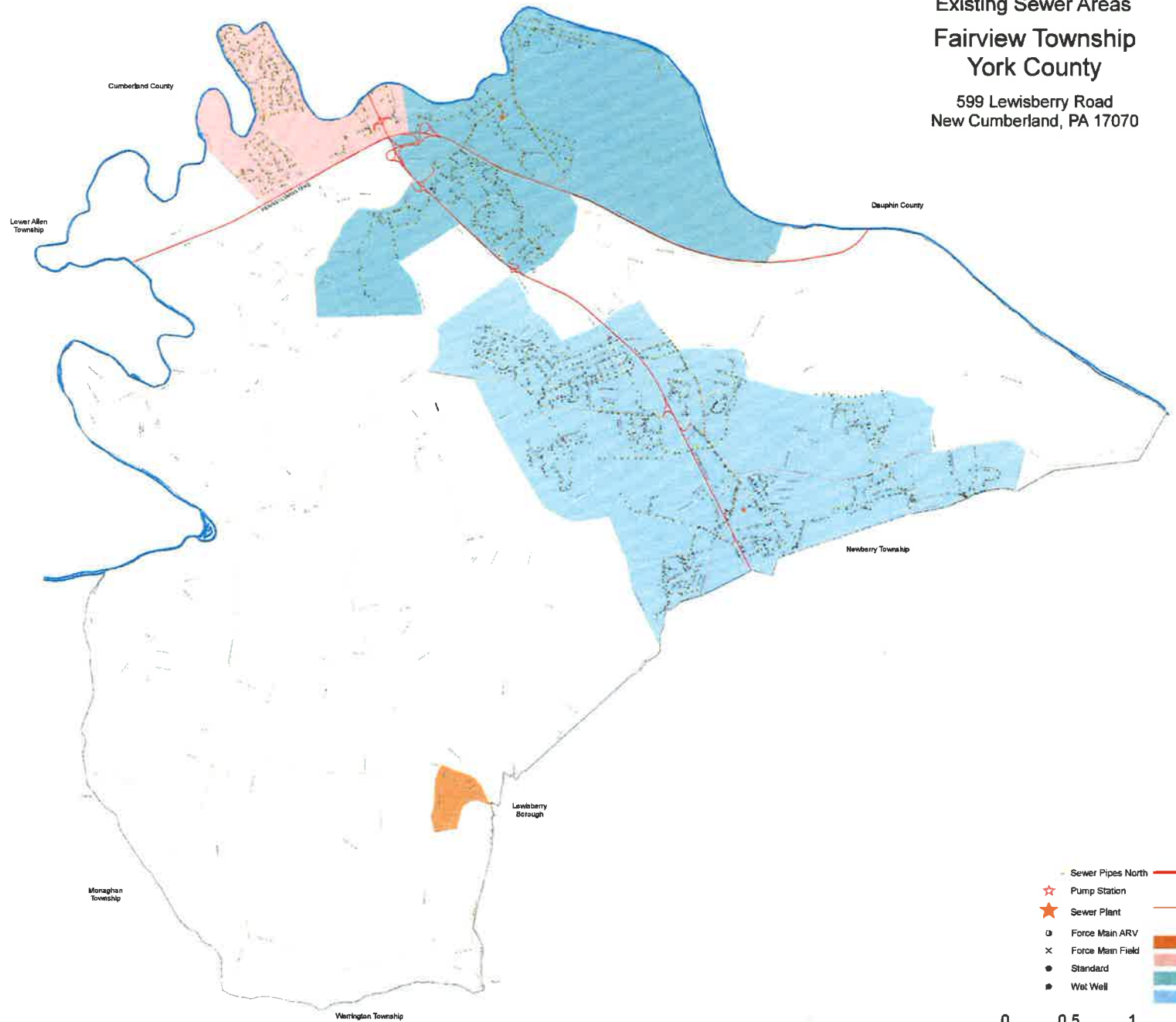
Susan Simms Marsh

blg
Enclosure

cc: S. Donnelly
M. Deshpande

ACT 537
 Existing Sewer Areas
 Fairview Township
 York County

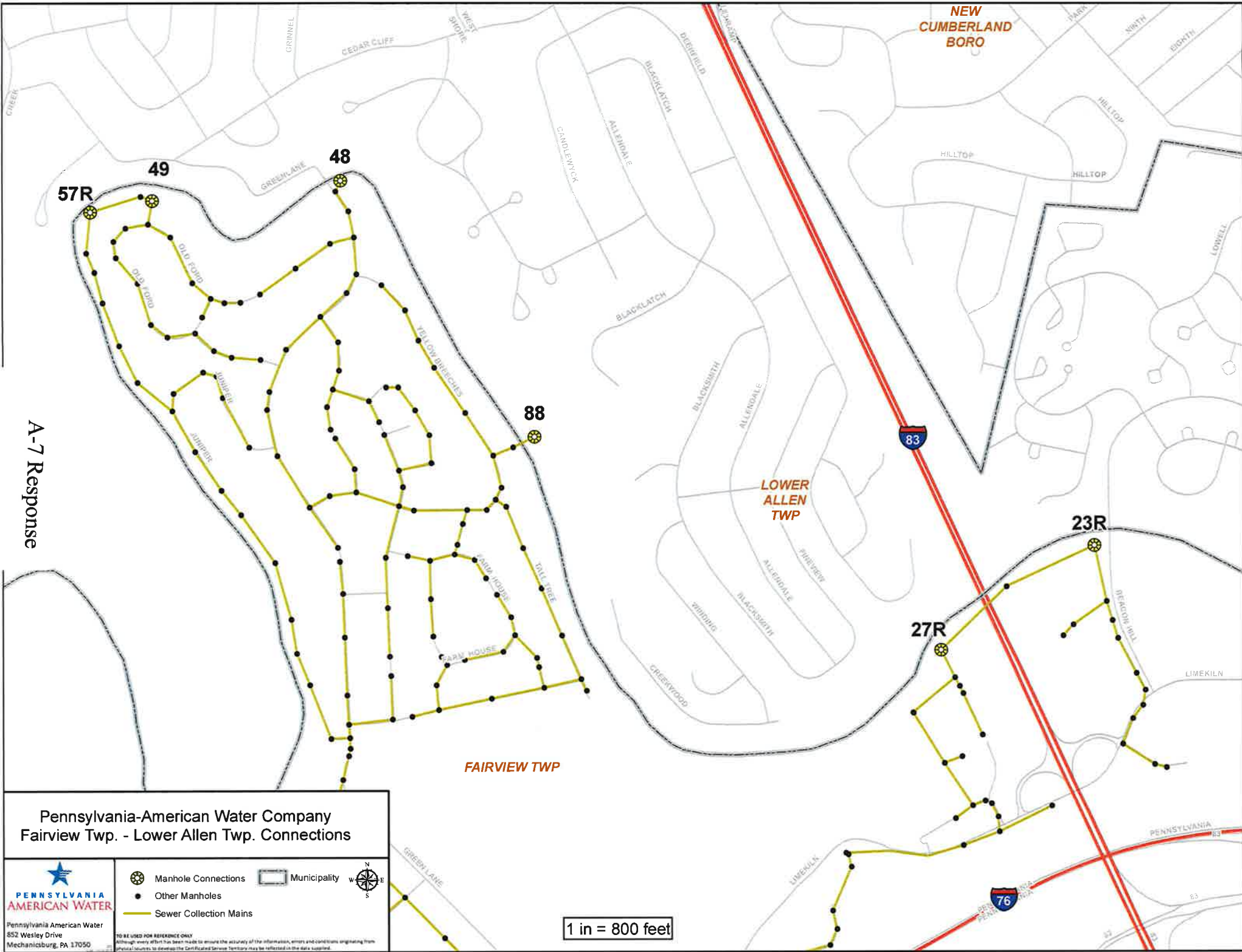
599 Lewisberry Road
 New Cumberland, PA 17070



— Sewer Pipes North	— Interstate or Expressway
☆ Pump Station	— Private Road
★ Sewer Plant	— State Road
○ Force Main ARV	— Local Road
× Force Main Field	— Lewisberry
● Standard	— Lower Allen System Area
● Wet Well	— North Sewer Plant Area
	— South Sewer Plant Area

0 0.5 1 2 Miles

A-5 Response



A-7 Response

Pennsylvania-American Water Company
Fairview Twp. - Lower Allen Twp. Connections



- Manhole Connections
- Other Manholes
- Sewer Collection Mains
- Municipality



1 in = 800 feet

TO BE USED FOR REFERENCE ONLY
Although every effort has been made to ensure the accuracy of the information, errors and conditions originating from physical sources to develop the Geographical Service Territory may be reflected in the data supplied.