



Mark C. Morrow, Esq.

UGI Corporation  
460 North Gulph Road  
King of Prussia, PA 19406

Post Office Box 858  
Valley Forge, PA 19482-0858

(610) 768-3628 Telephone (direct)  
(610) 992-3258 Facsimile

May 31, 2016

VIA E-FILING

Rosemary Chiavetta, Secretary  
Pennsylvania Public Utility Commission  
P.O. Box 3265  
Harrisburg, PA 17105-3265

**Re: EDC Plan Filings for Seamless Moves and Instant Connects,  
Docket No. M-2014-2401126**

Dear Secretary Chiavetta:

Enclosed for filing in accordance with the instructions set forth in ordering paragraph number 2 of the Commission's May 19, 2016 Final Order at the above docket are UGI Utilities, Inc. – Electric Division's ("UGI") Revised Plans for Implementing Seamless Moves and Instant Connects.

Copies of this document have been served upon the persons indicated on the attached Certificate of Service.

Very truly yours,

Mark C. Morrow

Counsel for UGI Utilities, Inc. – Electric Division

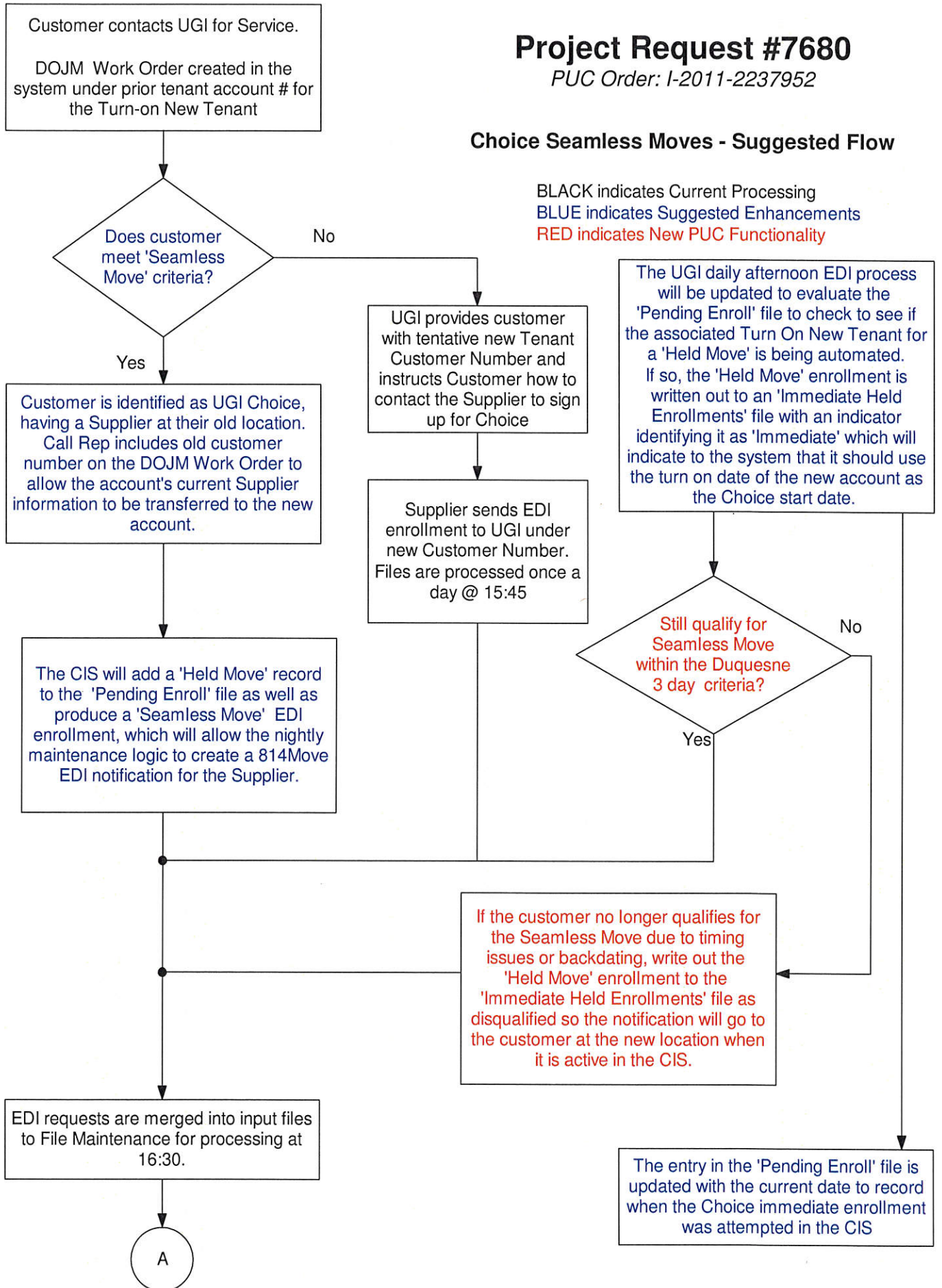
SEAMLESS MOVES  
AND  
INSTANT CONNECTS  
PROCESS FLOWCHARTS

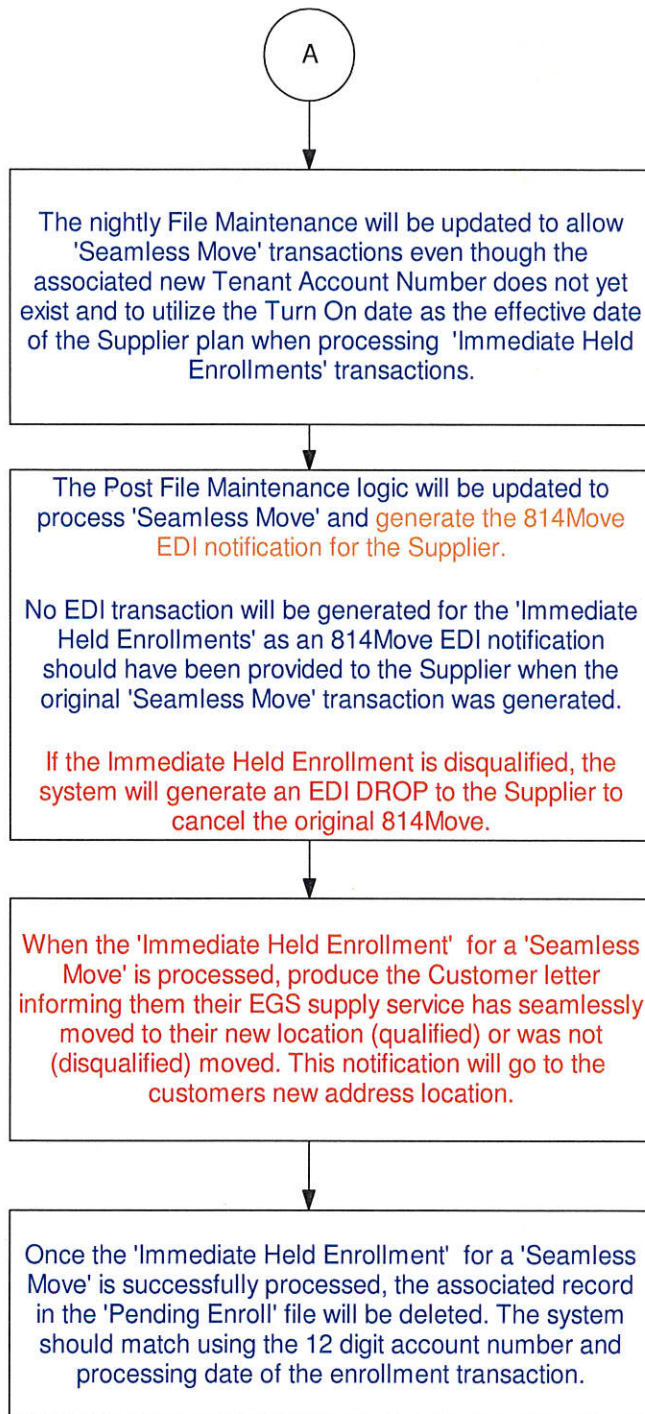
# Project Request #7680

PUC Order: I-2011-2237952

## Choice Seamless Moves - Suggested Flow

BLACK indicates Current Processing  
BLUE indicates Suggested Enhancements  
RED indicates New PUC Functionality





Additional Processing Notes:

The Electric Rates/Supply group will need to know when the 'Seamless Move' transaction 814M is processed as they will need to include it in the Choice energy scheduling.

- If the actual effective date on the 'Immediate Held Enrollment' differs from what was in the 'Seamless Move' 814Move EDI notification originally sent to the Supplier, then an EDI 814C needs to be sent to the Supplier informing them of the start date change. The Electric Rates/Supply group will also need to be notified so they can adjust the energy scheduling.

- If a 'Held Move' is voided due to a work order that is cancelled, is disqualified, or never automates, an EDI DROP record will be sent to the Supplier to inform them of the failed 814M enrollment. Again, the Electric Rates/Supply group will need to be notified so the Choice energy scheduling can be adjusted accordingly.



BEFORE THE  
PENNSYLVANIA PUBLIC UTILITY COMMISSION

EDC Plan Filings for Seamless Moves and :  
Instant Connects : Docket No. M-2014-2401126

CERTIFICATE OF SERVICE

I hereby certify that I have, this 31st day of May, 2015, served a true and correct copy of  
the foregoing document in the manner and upon the persons listed below:

**VIA FIRST CLASS MAIL:**

Office Of Consumer Advocate  
555 Walnut Street  
5<sup>th</sup> Floor, Forum Place  
Harrisburg, PA 17101-1921

Office of Small Business Advocate  
Suite 202, Commerce Building  
300 North Second Street  
Harrisburg, PA 17101

Pennsylvania Public Utility Commission  
Bureau of Investigation and Enforcement  
Commonwealth Keystone Building  
400 North Street  
Harrisburg, PA 17120



---

Mark C. Morrow