

PA PUC V. COMMONWEALTH TELEPHONE COMPANY  
DOCKET NO. I-00920020

OCA CROSS EXAMINATION EXHIBIT NO. 5

DATE ENTERED: 7/2/93

*1465*

*jav*

**DOCUMENT  
FOLDER**

RECEIVED  
51 JUL 13 PM 2:02  
PA, P. U. S.  
INFO. CONTROL DIV.

**DOCKETED**  
JUL 16 1993

RESPONSE OF COMMONWEALTH TELEPHONE COMPANY  
TO INTERROGATORIES OF THE OFFICE OF CONSUMER ADVOCATE, SET I  
PA PUC V. CTCO  
PA PUC DOCKET NO. I-00920020

1. Please supply a chart showing all affiliate corporations. Please identify the principal lines of business and the gross revenues for each.

ANSWER: The attachment shows the operating structure of C-TEC Corporation, Commonwealth Telephone Company's parent, affiliated operating groups, their principal lines of business, and associated 1991 revenues.

PREPARED BY: SCOTT BURNSIDE

## C-TEC Corporation Operating Structure

		<u>1991 Revenues (Thousands)</u>
<b>Telephone Group</b>	Local Exchange Carrier Northern and Eastern PA In Excess of 200,000 Access Lines	\$119,310
<b>Commonwealth Long Distance</b>	Long Distance Carrier/Reseller	\$9,062
<b>C-TEC Corporation</b>	<b>Cable Television</b>	
	NY, NJ, PA, MI In Excess of 220,000 Subscribers	\$76,128
	<b>Mobile Services</b>	
	Cellular, Paging, Voice Mail, Telephone Answering Service Pennsylvania, Iowa Population Base 1.4 million	\$13,993
	<b>Communications Services</b>	
	Consulting & Engineering Implementation Systems & Networks	\$14,325

RESPONSE OF COMMONWEALTH TELEPHONE COMPANY  
TO INTERROGATORIES OF THE OFFICE OF CONSUMER ADVOCATE, SET I  
PA PUC V. CTCO  
PA PUC DOCKET NO. I-00920020

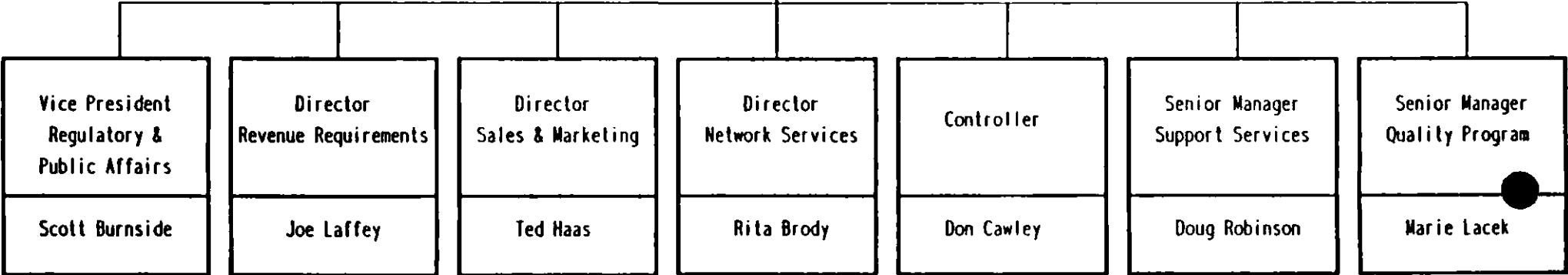
2. Please supply an organization chart for the management of Commonwealth Telephone Company.

ANSWER: Refer to the attachment.

PREPARED BY: SCOTT BURNSIDE

Executive  
Vice President  
Telephone  
Paul W. Mazza

Executive Secretary  
Sharon Norconk



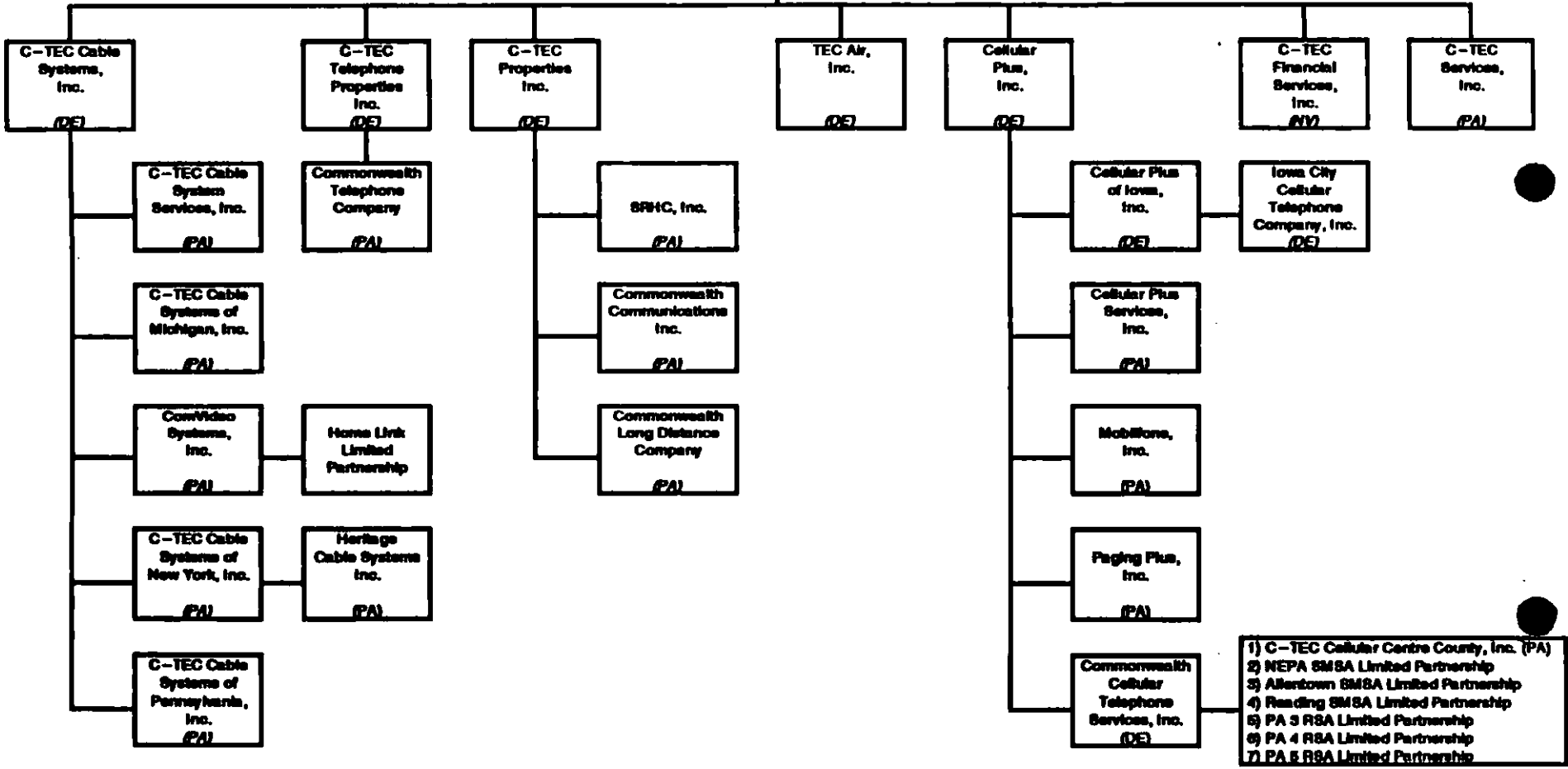
RESPONSE OF COMMONWEALTH TELEPHONE COMPANY  
TO INTERROGATORIES OF THE OFFICE OF CONSUMER ADVOCATE, SET III  
PA PUC V. CTCO  
PA PUC DOCKET NO. I-00920020

5. Please provide an organizational chart of C-TEC, each group within C-TEC, and each individual company within the group. Please also provide the number of employees within each company.

ANSWER: See attached organization chart for C-TEC. Also attached is a breakdown showing the total number of employees within each company.

PREPARED BY: SCOTT BURNSIDE

C-TEC Corporation  
(PA)



Structure/b