

BUREAU OF TECHNICAL UTILITY SERVICES DATA REQUESTS

TO PENNSYLVANIA-AMERICAN WATER COMPANY

Docket No. A-2017-2606103

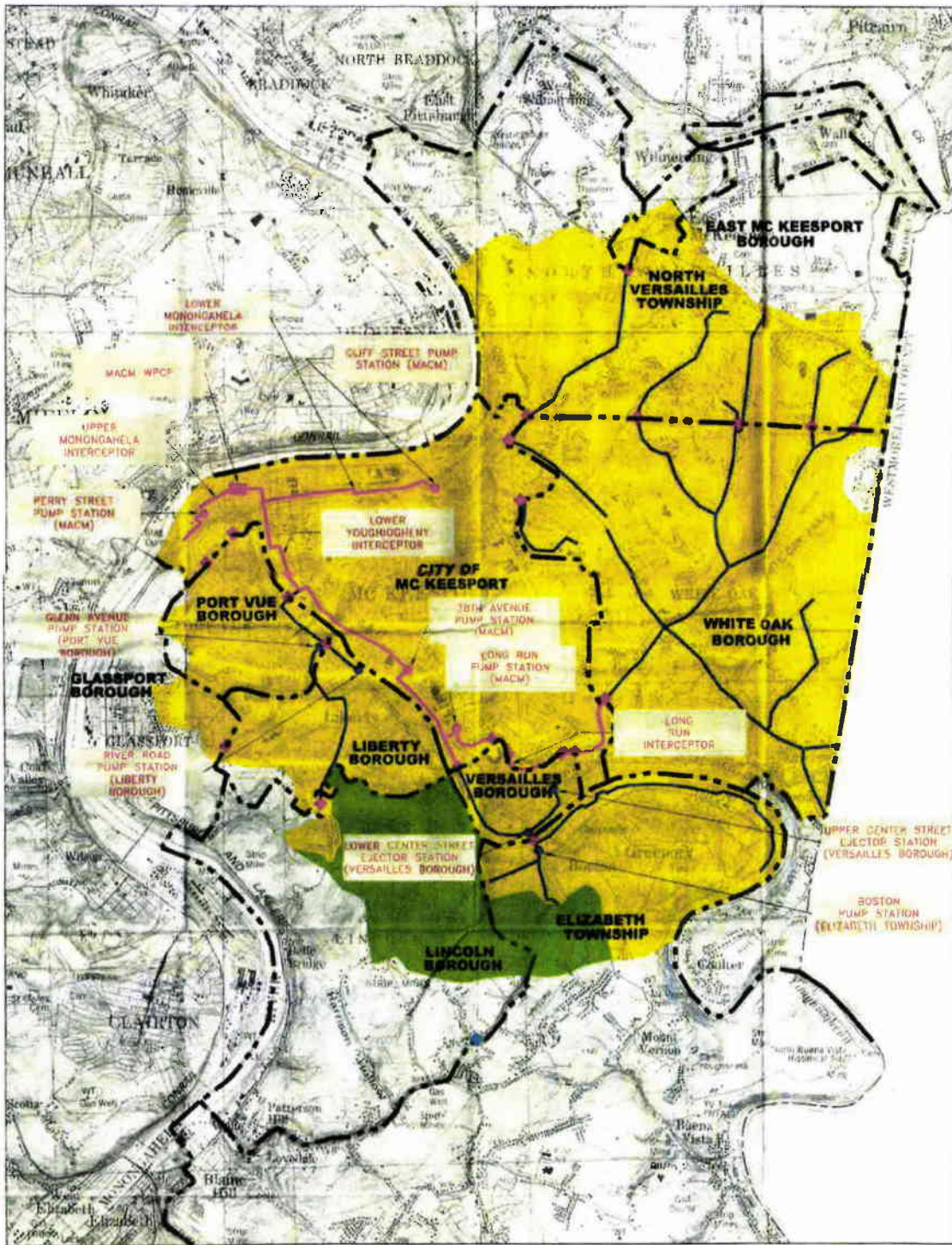
Data Request 1

A-25. A copy of MACM's 2006 Act 537 Official Sewage Facilities Plan was provided as supplemental information to the Application's Appendix A-22-a on June 8, 2017, but did not include pages 5, 7, 18, 78, or 88. Please provide a copy of the missing pages.

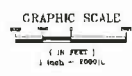
Response: Please refer to TUS A-25 Attachment 1.

Responsible Witness: David Kaufman
Title: Vice President, Engineering

Date: July 14, 2017



- MACM INTERCEPTOR
- MACM FORCE MAIN
- NON-MACM INTERCEPTOR
- NON-MACM FORCE MAIN
- MUNICIPAL BOUNDARY
- MACM PUMP STATION
- NON-MACM PUMP STATION
- EXISTING INTERMUNICIPAL CONNECTION
- PROPOSED INTERMUNICIPAL CONNECTION
- EXISTING MACM SERVICE AREA
- PROPOSED MACM SERVICE AREA



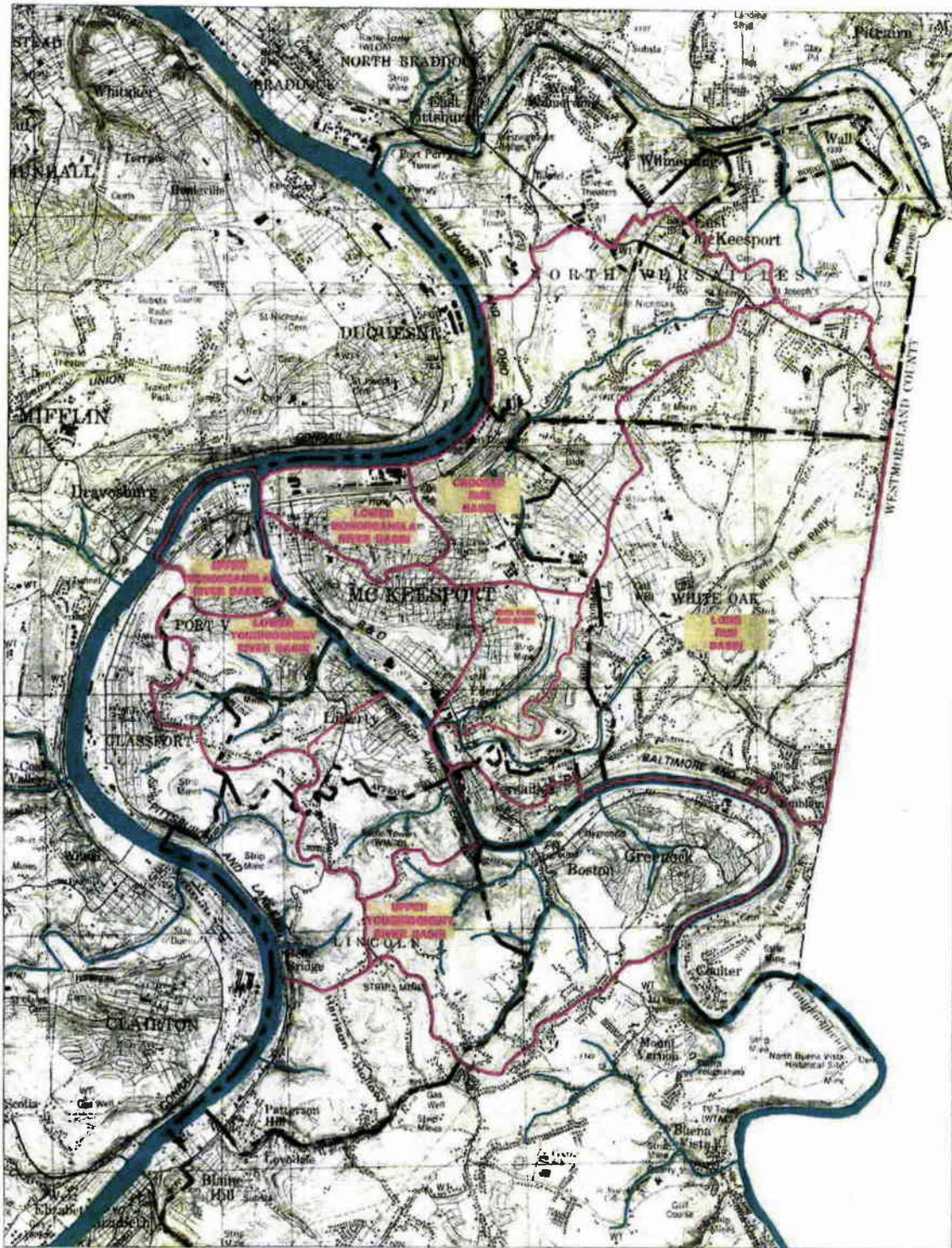
34	Scale: As Shown
	Date: JAN 2008
	Drawn By: NMM
	Checked By: K.M.
	Approved By: K.M.

MUNICIPAL AUTHORITY OF THE CITY OF MCKEESPORT
ALLEGHENY COUNTY, PENNSYLVANIA
ACT 537 SEWAGE FACILITIES PLAN
PLANNING AREA FACILITIES

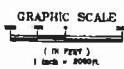


5173 CAMPBELL BLVD. #200
 PITTSBURGH, PA 15205
 PHONE: 412-484-0910
 FAX: 412-484-0488
 INFO@KLHENGINEERS.COM

Date	Revisions	Date	Revisions
3/08	General Revisions		



- MAJOR DRAINAGE BASIN BOUNDARY
- SUB-DRAINAGE BASIN BOUNDARY
- - - MUNICIPAL BOUNDARY



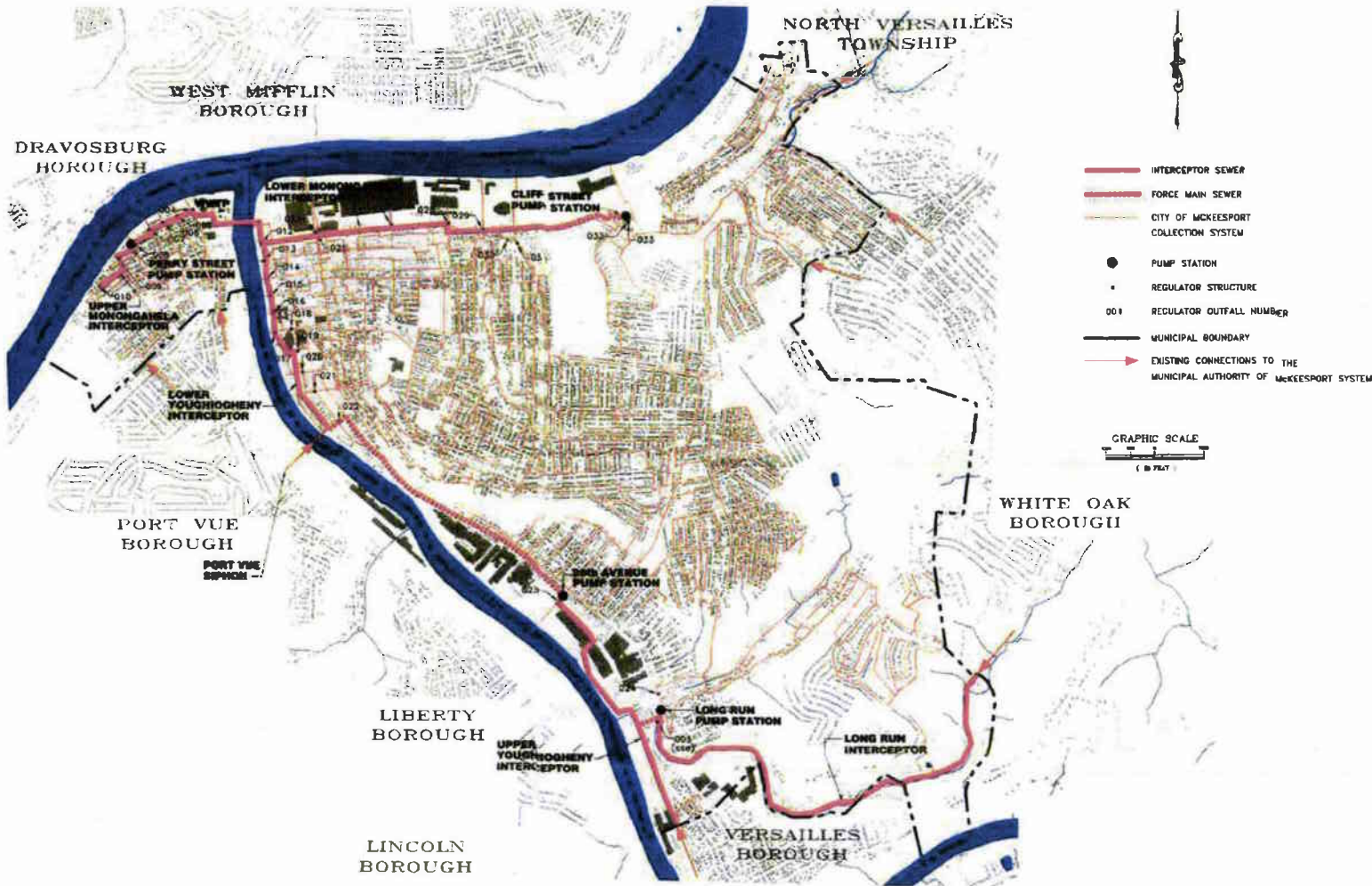
Scale	As Shown
Date	06/11/2010
Drawn By	WLB
Checked By	WLB
Approved By	WLB

MUNICIPAL AUTHORITY OF THE CITY OF MCKEESPORT
ALLEGHENY COUNTY, PENNSYLVANIA
ACT 537 SEWAGE FACILITIES PLAN
DRAINAGE BASINS

KLH ENGINEERS, INC.

1172 CAMDEN RD
 PITTSBURGH, PA 15228
 PHONE: 412-664-0810
 FAX: 412-664-0438
 INFO@KLHENGINEERS.COM

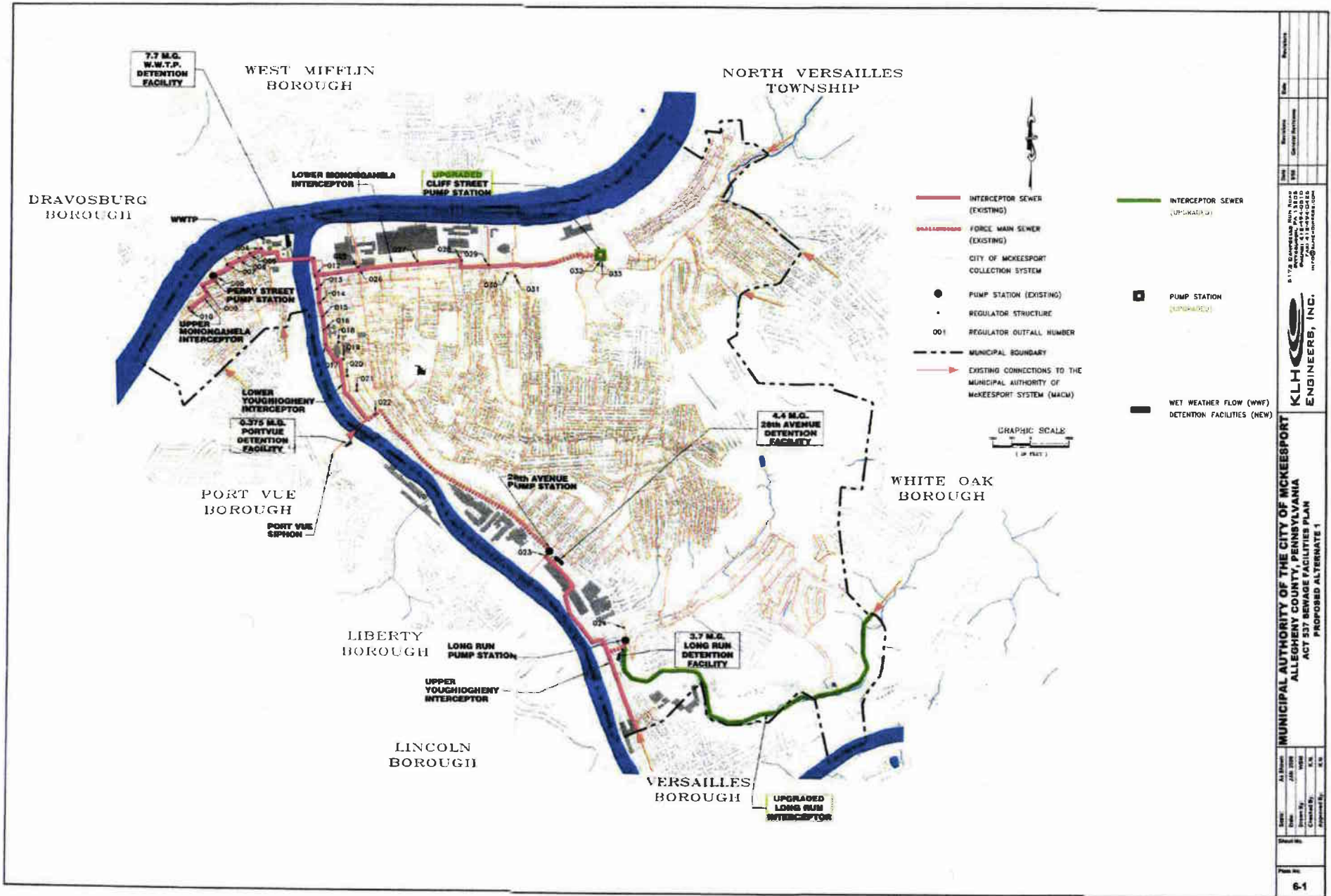
Sheet	Revisions	Date	By



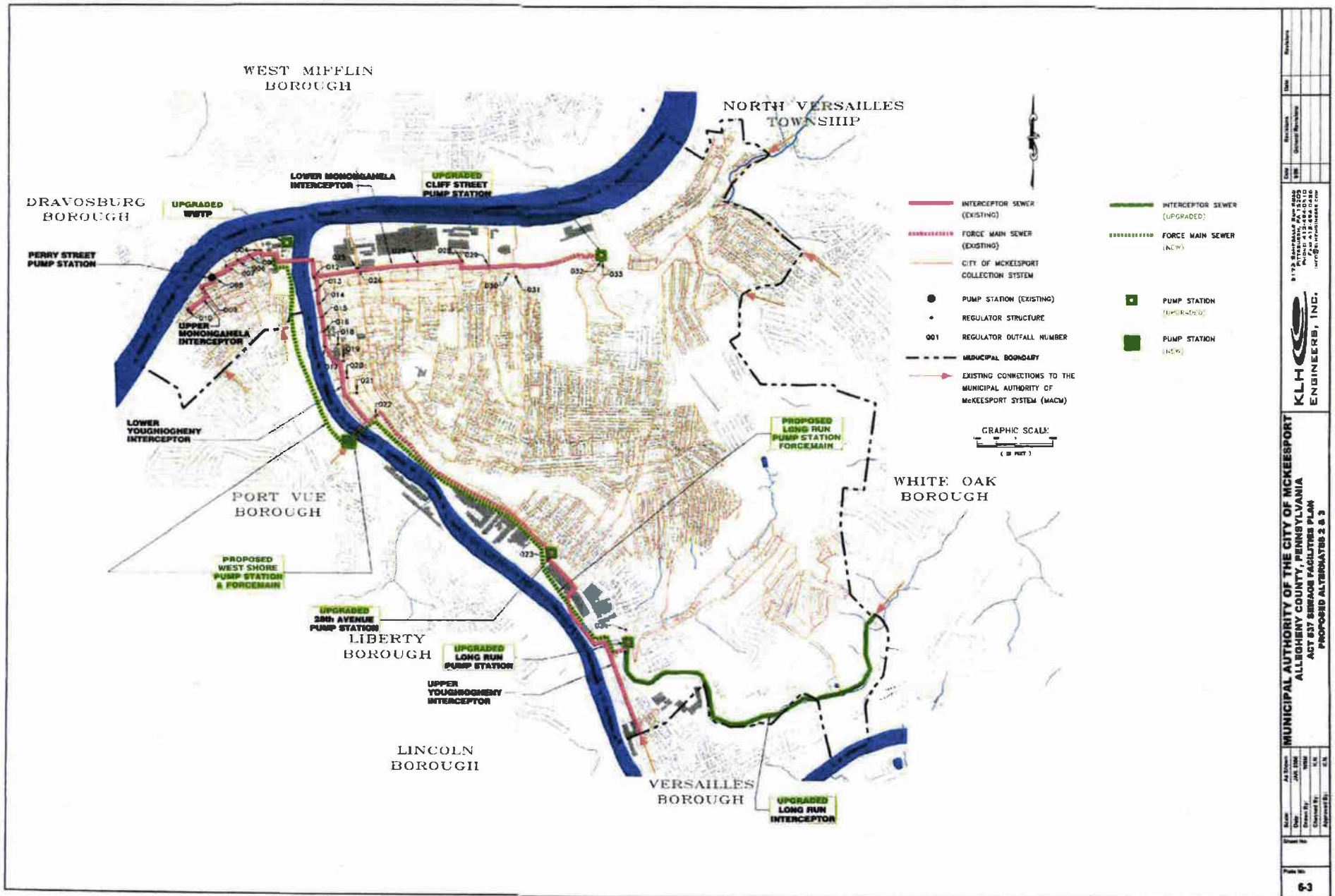
- INTERCEPTOR SEWER
- FORCE MAIN SEWER
- CITY OF MCKEESPORT COLLECTION SYSTEM
- PUMP STATION
- REGULATOR STRUCTURE
- 001 REGULATOR OUTFALL NUMBER
- - - MUNICIPAL BOUNDARY
- EXISTING CONNECTIONS TO THE MUNICIPAL AUTHORITY OF MCKEESPORT SYSTEM



	MUNICIPAL AUTHORITY OF THE CITY OF MCKEESPORT ALLEGHENY COUNTY, PENNSYLVANIA ACT 837 SEWAGE FACILITIES PLAN WACH INTERCEPTOR SYSTEM				
Name: _____ Date: _____ Drawn By: _____ Checked By: _____ Approved By: _____	AS BUILT JAN 2003	WASH N.E.	41	5175 Cumberland Run Road Project #14-00-000 INFO@KLMHENGINEERS.COM	Revision Date



Author	A.J. Blum	Date	
Drawn	JAN 2008	Scale	
Checked	MMB	Revisions	
Created By	K.H.	General Instructions	
Approved By			
8173 BROADWAY SUITE 200 PITTSBURGH, PENNSYLVANIA 15203 PH: 412-776-0310 FAX: 412-776-0300 WWW.KLHENGINEERS.COM			
KLH ENGINEERS, INC.			
MUNICIPAL AUTHORITY OF THE CITY OF MCKEESPORT ALLEGHENY COUNTY, PENNSYLVANIA ACT 537 SEWAGE FACILITIES PLAN PROPOSED ALTERNATE 1			
Sheet No.		Page No.	91



DATE	REVISION

5125 BUCKINGHAM PARK ROAD
 PITTSBURGH, PA 15206
 PHONE: 412.781.1100
 FAX: 412.781.1100
 WWW: WWW.KLH-ENGINEERS.COM



MUNICIPAL AUTHORITY OF THE CITY OF MCKEESPORT
ALLEGHENY COUNTY, PENNSYLVANIA
ACT 537 SEWERAGE FACILITIES PLAN
PROPOSED ALTERNATIVES 2 & 3

DATE	AS SHOWN	
DATE	JAN 2006	
DESIGNER	KLH	
CHECKED BY		
APPROVED BY		