



7000 Geerdes Boulevard  
King of Prussia, PA 19406  
October 11, 2017

LB-MAL  
Philadelphia County  
S.R. 0095, Section GR4  
I-95 SB over CONRAIL  
PUC #A-2017-2620038

Rosemary Chiavetta, Secretary  
Pennsylvania Public Utility Commission  
P. O. Box 3265  
Harrisburg, PA 17105-3265

Ms. Chiavetta:

We are submitting a set of relative pages of the final construction and structure plans for review and approval.

Please review and approve these plans, so we may proceed with the construction of this project. A Certificate-of-Service, as required by the Rules of Procedure found in the Pennsylvania Code, is attached for this filing.

If you have any questions, please call me at 610-205-6530.

Thank You,

A handwritten signature in blue ink, appearing to read "Mary Ann Lang", is written over the typed name.

Mary Ann Lang  
District Utility Manager

cc: Parties of Record  
File: 79827-Final-PUC

**BEFORE THE  
PENNSYLVANIA PUBLIC UTILITY COMMISSION**

Application of the Department of Transportation of the Commonwealth of Pennsylvania for approval to replace the superstructure of the existing bridge where I-95 SB crosses above the track(s) of Consolidated Rail Corporation, DOT No. 858 110 H in the City of Philadelphia, Philadelphia County and the allocation of costs incident thereto.

Application  
Docket No. **A-2017-2620038**

**Electronically Filed**

CERTIFICATE OF SERVICE

I hereby certify that I have this day served a true copy of the foregoing document upon the participants listed below, in accordance with the requirements of 52 Pa. Code § 1.54, by first class mail, postage prepaid:

Laura Lippincott, Section Manager  
Verizon Pennsylvania, LLC  
1050 Virginia Drive – Floor 4  
Fort Washington, PA 19034

Senior Attorney  
City of Philadelphia Law Department  
1515 Arch Street – 16<sup>th</sup> floor  
Philadelphia, PA 19102

Monica Lyv, Senior Staff Engineer  
Philadelphia Gas Works  
800 W. Montgomery Ave.  
Planning Section – 2<sup>nd</sup> floor  
Philadelphia PA 19122-2898

Chris Ricciuti, Engineer  
Zayo Bandwidth  
170 Robbins Road  
Downingtown, PA 19335

Ryan Hill, Director Design & Construction  
Consolidated Rail Corporation  
1000 Howard Blvd. – 4<sup>th</sup> floor  
Mount Laurel, NJ 08054

Kevin Hauschildt, Chief Engineer  
Norfolk Southern Railways  
Bridges & Structures Department  
1200 Peachtree Street, NE  
Department Box 142  
Atlanta, GA 30309

Patrick O'Donnell, Right-of-Way Manager  
City of Philadelphia Department of Streets  
1401 JFK Blvd. – Room 940 MSB  
Philadelphia, PA 19102-1676

Andrew McGinnis  
Sunesys, LLC  
11 Grandview Circle  
Canonsburg, PA 15317

City Solicitor  
City of Philadelphia Law Department  
1515 Arch Street – 16<sup>th</sup> floor  
Philadelphia, PA 19102

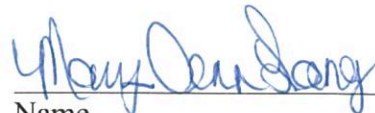
Vahe Hovsepian, Design Manager  
City of Philadelphia Water Department  
1101 Market Street – 5<sup>th</sup> floor  
Philadelphia, PA 19107-2994

Bill Hensil, Program Manager  
PECO Energy Company  
1050 West Swedesford Road  
Berwyn, PA 19312

Carlo Verdi, Project Engineer  
Teleport Communications America, LLC  
175 West Main Street  
Freehold, NJ 07728

Jason M. Morris, Assistant General Counsel  
Norfolk Southern Railways  
Three Commercial Place  
Norfolk, VA 23510

Dated this 17<sup>th</sup> Day of October 2017

  
Name

# COMMONWEALTH OF PENNSYLVANIA



## DEPARTMENT OF TRANSPORTATION DRAWINGS FOR CONSTRUCTION OF

STATE ROUTE 0095 SECTION GR4  
IN PHILADELPHIA COUNTY

FROM STA 295+19.00 NB TO STA 485+94.50 NB LENGTH 18,875.50 FT 3.575 MI

FROM SEG 0224 OFFSET 0712 TO SEG 0260 OFFSET 0786

FROM STA 300+44.00 SB TO STA 485+38.34 SB LENGTH 18,294.34 FT 3.465 MI

FROM SEG 0225 OFFSET 1389 TO SEG 0261 OFFSET 0825

ALSO

STATE ROUTE 2001

FROM STA 12+50.00 TO STA 88+56.00

ALSO

STATE ROUTE 2009

FROM STA 10+55.35 NB TO STA 33+64.69

FROM STA 10+49.39 SB

ALSO

STATE ROUTE 8011

ALSO

STATE ROUTE 8013

LIMIT OF ITS

STATE ROUTE 0095

FROM SEG 0224 OFFSET 3052 SEG 0244 OFFSET 1161

FROM SEG 0225 OFFSET 2978 TO SEG 0245 OFFSET 1161 PHILADELPHIA COUNTY

ALSO

STATE ROUTE 0332

FROM SEG 0270 OFFSET 0000

FROM SEG 0271 OFFSET 0000 TO SEG 0290 OFFSET 0415 BUCKS COUNTY

ALSO

STATE ROUTE 0413

FROM SEG 0180 OFFSET 0000 SEG 0180 OFFSET 2649

FROM SEG 0181 OFFSET 0000 TO SEG 0181 OFFSET 2610 BUCKS COUNTY

ALSO

STATE ROUTE 2009

FROM SEG 0010 OFFSET 0000 SEG 0010 OFFSET 1822

FROM SEG 0011 OFFSET 0000 TO SEG 0011 OFFSET 1822 PHILADELPHIA COUNTY

ALSO

STATE ROUTE 2037

FROM SEG 0130 OFFSET 0919 SEG 0130 OFFSET 1319

FROM SEG 0131 OFFSET 0919 TO SEG 0131 OFFSET 1319 BUCKS COUNTY

PUC APPLICATION DOCKET NUMBER A-2017-2620038

DISTRICT	COUNTY	TOWNSHIP	CITY	ROUTE	SECTION	TOTAL SHEETS
6-0	PHILADELPHIA	-	PHILADELPHIA	0095	GR4	302
	BUCKS	MIDDLETOWN	-	-	-	
	BUCKS	MIDDLETOWN	-	-	-	
	BUCKS	LOWER MAKEFIELD	-	-	-	

SR 0095, PREVIOUSLY KNOWN AS LR 1000  
SR 2009, PREVIOUSLY KNOWN AS LR 67047  
SR 8011, PREVIOUSLY KNOWN AS LR 1000  
SR 2001, PREVIOUSLY KNOWN AS LR 67348  
MPMS/ECMS NO: 79827

ALSO INCLUDED:  
TRAFFIC CONTROL PLAN 305 SHEETS  
SIGNING AND SIGN LIGHTING PLAN 100 SHEETS  
PAVEMENT MARKING PLAN 131 SHEETS  
LANDSCAPING PLAN 100 SHEETS  
EROSION AND SEDIMENT POLLUTION CONTROL PLAN 163 SHEETS  
PHILADELPHIA WATER DEPARTMENT SEWER RECONSTRUCTION PLAN 47 SHEETS

S-40952-RD 3 SHEETS  
PHILADELPHIA GAS WORKS UTILITY RELOCATION PLAN B-4146

PHILADELPHIA WATER DEPARTMENT UTILITY RELOCATION PLAN-WATER S-40952-RD 15 SHEETS

PHILADELPHIA WATER DEPARTMENT UTILITY RELOCATION PLAN-SEWER S-40952-RD 10 SHEETS

HIGHWAY LIGHTING PLAN 156 SHEETS  
TRAFFIC SIGNAL PLAN 27 SHEETS  
ITS PLAN 74 SHEETS  
SOIL PROFILE PLAN 47 SHEETS

STRUCTURE PLANS

S-26898 104 SHEETS S-37430 4 SHEETS

S-26906 64 SHEETS S-37433 7 SHEETS

S-26907 102 SHEETS S-37434 6 SHEETS

S-27048 100 SHEETS S-37435 4 SHEETS

S-27050 85 SHEETS S-37436 8 SHEETS

S-27051 113 SHEETS S-37437 8 SHEETS

S-27131 168 SHEETS S-37438 4 SHEETS

S-32135 269 SHEETS S-37439 8 SHEETS

S-32476 106 SHEETS S-37440 6 SHEETS

S-34769 88 SHEETS S-34441 8 SHEETS

S-35232 128 SHEETS

RETAINING WALL PLANS

S-37442 (WALL 16) 20 SHEETS

S-37443 (WALL 17) 22 SHEETS

S-37444 (WALL 18) 16 SHEETS

SOUND BARRIER WALL PLANS

SIGN STRUCTURE PLANS

S-37230 (SS5) 3 SHEETS

S-37231 (SS9) 3 SHEETS

S-37232 (SS12) 3 SHEETS

S-37233 (SS10) 3 SHEETS

S-37234 (SS11) 3 SHEETS

S-37236 (SS13) 3 SHEETS

CROSS SECTIONS

EXISTING STRUCTURE PLANS

S-5014A 15 SHEETS S-32467 77 SHEETS

S-5016 54 SHEETS S-26896 254 SHEETS

S-5017 53 SHEETS S-26509 78 SHEETS

S-6496 158 SHEETS S-26905 77 SHEETS

S-6499 18 SHEETS S-27052 74 SHEETS

S-6501 16 SHEETS S-26867 70 SHEETS

S-6502 30 SHEETS S-27049 80 SHEETS

S-27047 82 SHEETS S-26946 83 SHEETS

S-27043 254 SHEETS S-13851 36 SHEETS

S-27531 40 SHEETS

ESTABLISHED AS A LIMITED ACCESS HIGHWAY FROM STATION 288+69.06 TO STATION 303+95.80 BY CONDEMNATION PLAN OF LEGISLATIVE ROUTE 1000 SECTION B-6 R/W APPROVED ON MAY 24, 1966

ESTABLISHED AS A LIMITED ACCESS HIGHWAY FROM STATION 303+20.14 TO STATION 308+80.77 BY RIGHT OF WAY PLAN FOR LR 1000 SECTION B-7 R/W APPROVED ON MAY 24, 1966

ESTABLISHED AS A LIMITED ACCESS HIGHWAY FROM STATION 348+16.71 TO STATION 350+10.76 BY RIGHT OF WAY PLAN FOR SR 0095 SECTION GR1 R/W APPROVED ON FEBRUARY 11, 2008

ESTABLISHED AS A LIMITED ACCESS HIGHWAY FROM STATION 308+80.77 TO STATION 412+55.98 BY RIGHT OF WAY PLAN FOR SR 0095 SECTION GR1 R/W APPROVED ON APRIL 3, 2009 AND REVISED AND RE-APPROVED ON NOVEMBER 1, 2012

ESTABLISHED AS A LIMITED ACCESS HIGHWAY FROM STATION 412+55.98 TO STATION 419+00 BY CONDEMNATION PLAN OF LEGISLATIVE ROUTE 1000 SECTION C-3 R/W APPROVED ON OCTOBER 30, 1962

ESTABLISHED AS A LIMITED ACCESS HIGHWAY FROM STATION 308+80.77 TO STA 412+55.98 BY RIGHT OF WAY PLAN FOR SR 0095 SECTION GR1 R/W APPROVED ON NOVEMBER 1, 2010.

### SCALE

HORIZONTAL 0 25 50 FEET

VERTICAL 0 5 10 FEET

(AND AS SHOWN ON PLAN)

### DESIGN DESIGNATION

SR 0095

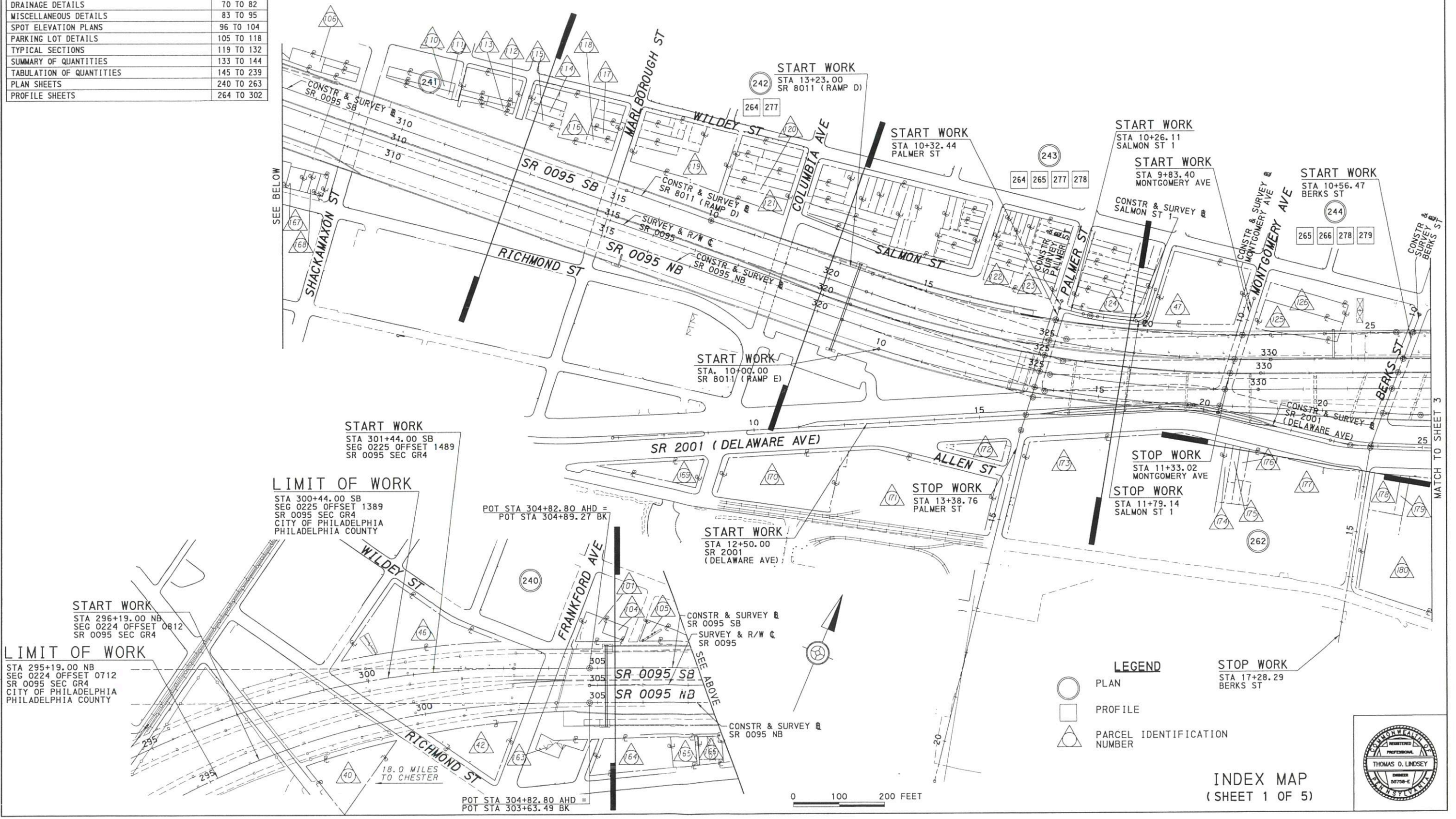
### TRAFFIC DATA

HIGHWAY CLASSIFICATION	— INTERSTATE HIGHWAY	CURRENT ADT	— 89,634 (2018)
DESIGN SPEED	— 60 MPH	DESIGN YEAR ADT	— 100,100 (2040)
PAVEMENT WIDTH	— 60'	DHV	— 8,180
SHOULDER WIDTH	— 12'	D	— 55%
MEDIAN WIDTH	— 26' AND VARIES	T	— 10%

PREPARED BY: <b>AECOM</b> 625 WEST RIDGE PIKE CONSHOHOCKEN, PA.  THOMAS O. LINDSEY ENGINEER 55750-E DATE: 09/15/17	PREPARED BY: <b>AECOM</b> 625 WEST RIDGE PIKE CONSHOHOCKEN, PA.  YUXIN LING EDRIANA LAN ENGINEER PC074916 DATE: 9/15/17	RECOMMENDED DATE: 9/20/17 RECOMMENDED DATE: 9/20/17 APPROVED DATE: 9/20/17 DISTRICT EXECUTIVE DEPUTY SECRETARY SECRETARY OF TRANSPORTATION (ON BEHALF OF THE GOVERNOR AS WELL AS HERSELF)
--------------------------------------------------------------------------------------------------------------------------------------------	-------------------------------------------------------------------------------------------------------------------------------------------------	-------------------------------------------------------------------------------------------------------------------------------------------------------------------------------------------------------------

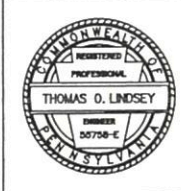
SHEET INDEX	
DESCRIPTION	SHEET(S)
TITLE SHEET	1
INDEX MAP	2 TO 6
LOCATION MAP	7 TO 10
GENERAL NOTES	11
SUMMARY OF PROJECT COORDINATES	12 TO 14
GEOMETRIC DATA PLAN	15 TO 20
REFERENCE CIRCLES	21 TO 23
CONTROL SKETCH	24 TO 28
SMP DETAILS AND PROFILES	29 TO 69
DRAINAGE DETAILS	70 TO 82
MISCELLANEOUS DETAILS	83 TO 95
SPOT ELEVATION PLANS	96 TO 104
PARKING LOT DETAILS	105 TO 118
TYPICAL SECTIONS	119 TO 132
SUMMARY OF QUANTITIES	133 TO 144
TABULATION OF QUANTITIES	145 TO 239
PLAN SHEETS	240 TO 263
PROFILE SHEETS	264 TO 302

DISTRICT	COUNTY	ROUTE	SECTION	SHEET	
6-0	PHILADELPHIA	0095	GR4	2 OF 302	
CITY OF PHILADELPHIA					
REVISION NUMBER	REVISIONS			DATE	BY



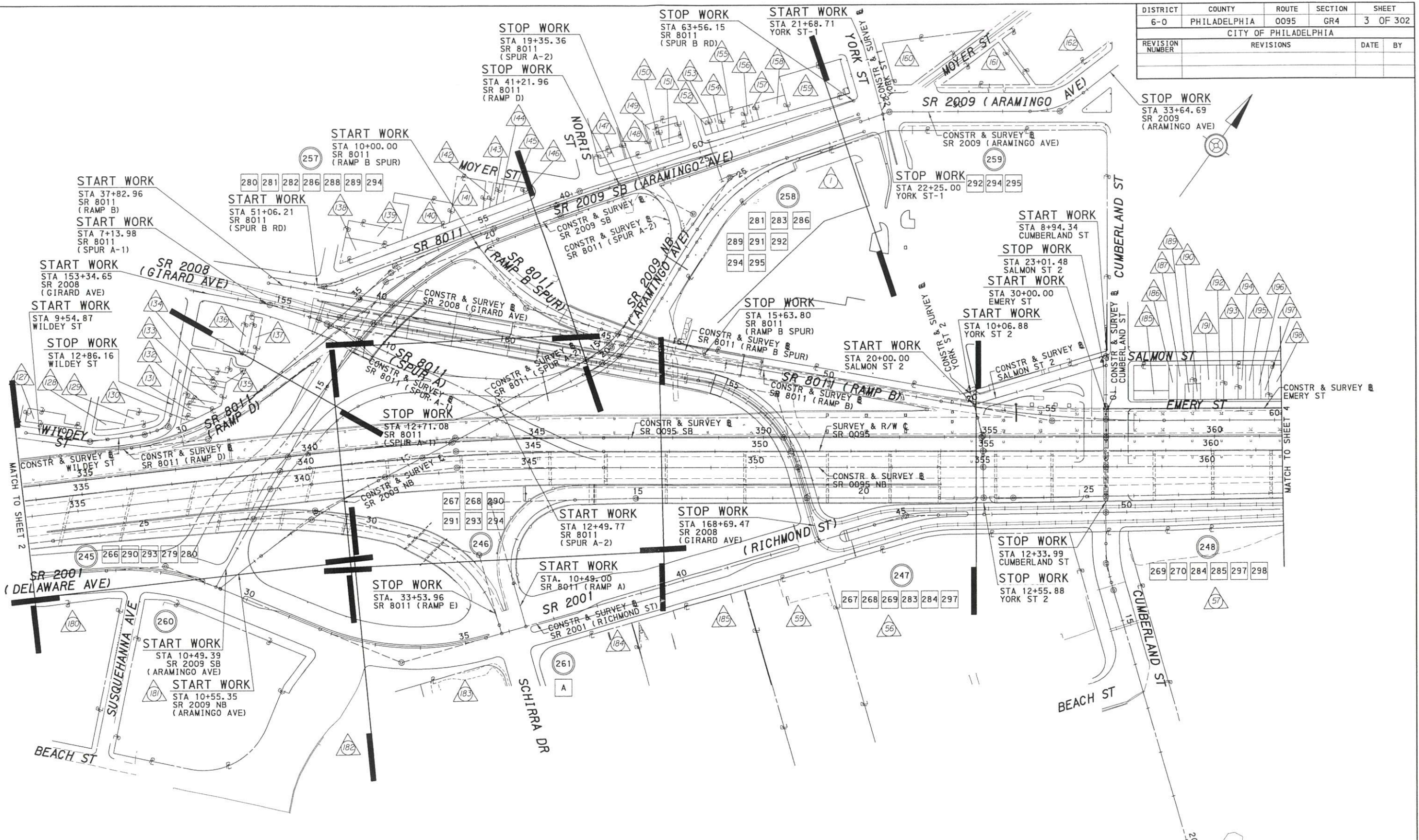
\\Gonshohocken\c\shohocken\proj\sr\transport\1\on\pds\0400655\01\CA000\civil\SR0095\RDWY\GR4\CR4\_Index01.dgn  
 9/15/2017 11:23:21 AM s:\sr\lprer0

- LEGEND**
- PLAN
  - PROFILE
  - PARCEL IDENTIFICATION NUMBER



INDEX MAP  
(SHEET 1 OF 5)

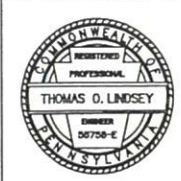
DISTRICT	COUNTY	ROUTE	SECTION	SHEET
6-0	PHILADELPHIA	0095	GR4	3 OF 302
CITY OF PHILADELPHIA				
REVISION NUMBER	REVISIONS			DATE BY



- LEGEND**
- PLAN
  - PROFILE
  - PARCEL IDENTIFICATION NUMBER

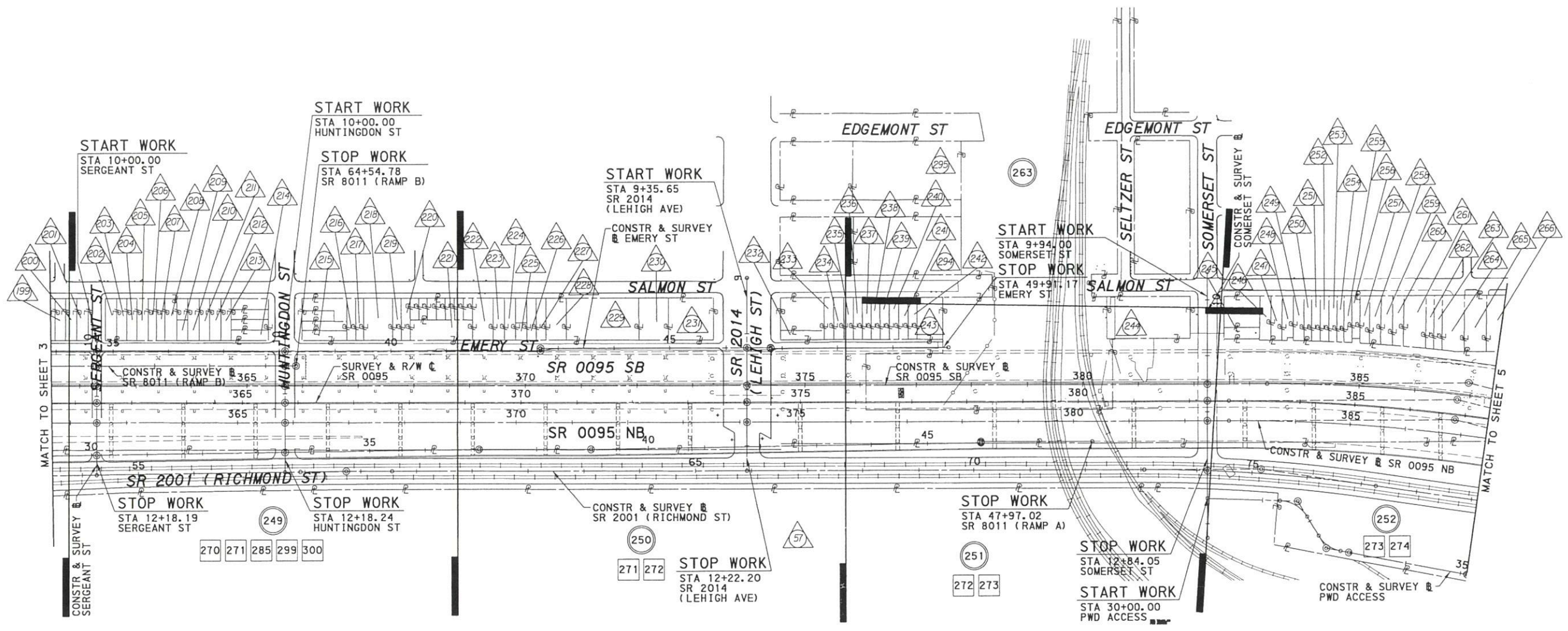
0 100 200 FEET

INDEX MAP  
(SHEET 2 OF 5)



\\Conshohocken\proj\electrical\Transpar\101\m\p6\400655\_01\CA00AC\1\1\SR0095\RDW\GR4\GR4\_1\cpx02.dgn  
 9/15/2011 11:23:23 PM stv6\_tepeng

DISTRICT	COUNTY	ROUTE	SECTION	SHEET
6-0	PHILADELPHIA	0095	GR4	4 OF 302
CITY OF PHILADELPHIA				
REVISION NUMBER	REVISIONS			DATE BY



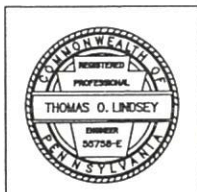
\\Comanohocken\Comanohocken\Projects\SR\SR0095\RDW\GR4\GR4\_Index.dwg  
 9/15/2017 11:23:25 PM s.r.w. lepar-g

**LEGEND**

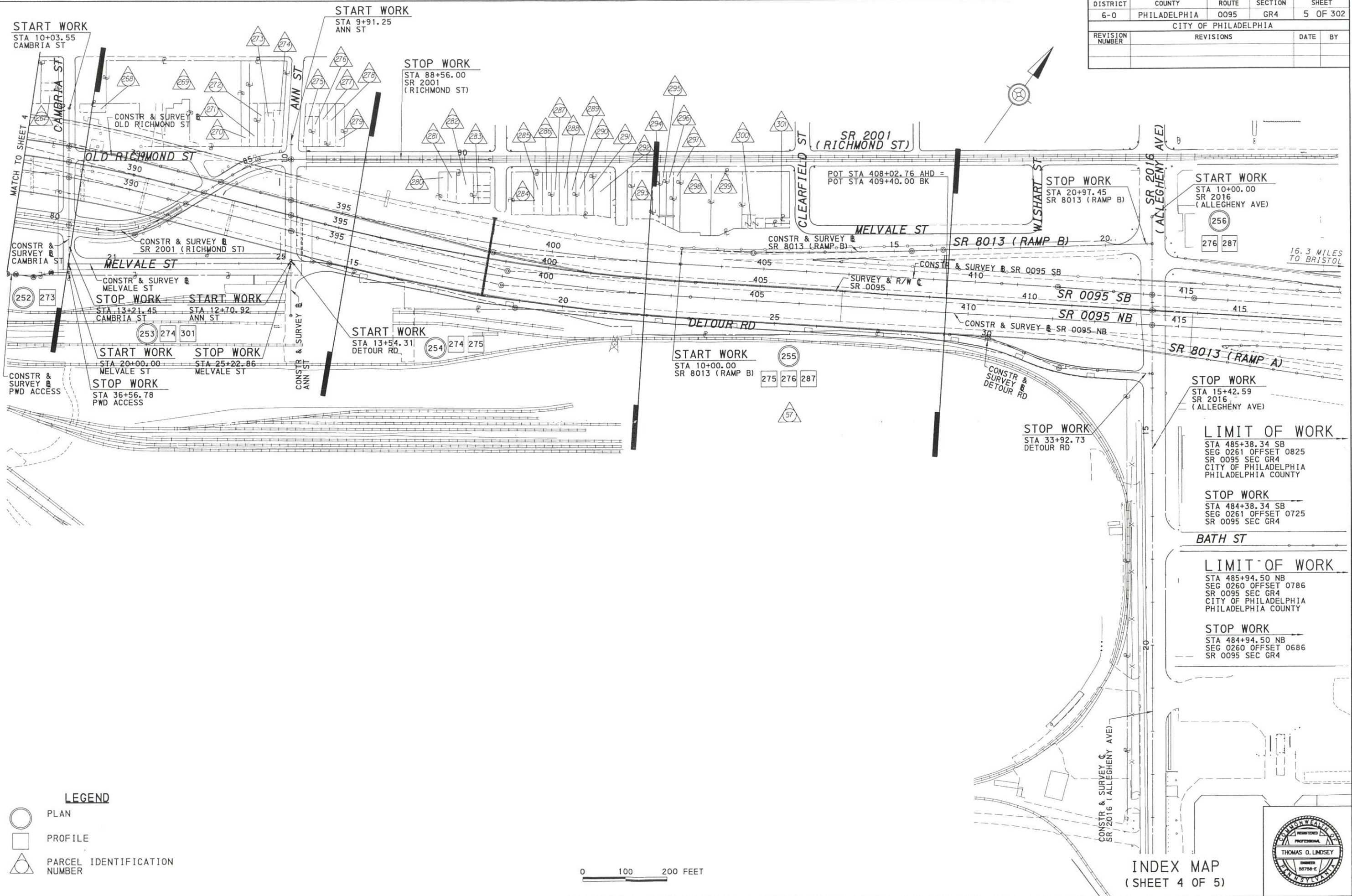
	PLAN
	PROFILE
	PARCEL IDENTIFICATION NUMBER



INDEX MAP  
(SHEET 3 OF 5)



DISTRICT	COUNTY	ROUTE	SECTION	SHEET
6-0	PHILADELPHIA	0095	GR4	5 OF 302
CITY OF PHILADELPHIA				
REVISION NUMBER	REVISIONS			DATE BY



**LEGEND**

	PLAN
	PROFILE
	PARCEL IDENTIFICATION NUMBER

\\conshohocken\conshohocken\proj\sec\sa\tr\consp\tr\1\en\p\p6\0400655\_01\CADD\AC\1\1\SR0095\RD\W\GR4\GR4\_1\index04.dgn  
 9/15/2017 11:23:28 PM stave\_sperg



LIST OF PUBLIC UTILITIES

SYMBOL	OWNER	ADDRESS	REPRESENTATIVE	TELEPHONE
—W—	CITY OF PHILADELPHIA WATER DEPARTMENT	ARAMARK TOWER 1101 MARKET STREET, 5TH FLOOR PHILADELPHIA, PA 19107-2994	MR. MICHAEL LAVERY CHIEF, DESIGN BRANCH	215-685-6280
—S—	CITY OF PHILADELPHIA WATER DEPARTMENT	ARAMARK TOWER 1101 MARKET STREET, 5TH FLOOR PHILADELPHIA, PA 19107-2994	MR. MICHAEL LAVERY CHIEF, DESIGN BRANCH	215-685-6280
—T1—	VERIZON PENNSYLVANIA LLC	15 MONTGOMERY PLACE, FLOOR 2 PITTSBURGH, PA 15212	MS. DEBORAH BARUM SECTION MANAGER	412-237-2285
—T2—	PECO ENERGY COMPANY (KEYSTONE TELEPHONE)	1050 W. SWEDES FORD ROAD BERWYN, PA 19312	MR. BILL HENSIL PROGRAM MANAGER	610-725-7129
—E—	PECO ENERGY COMPANY	1050 W. SWEDES FORD ROAD BERWYN, PA 19312	MR. BILL HENSIL PROGRAM MANAGER	610-725-7129
—G—	PHILADELPHIA GAS WORKS	800 W. MONTGOMERY AVENUE PHILADELPHIA, PA 19122-2898	MR. RYAN BREAM	215-684-6719
—EB—	CITY OF PHILADELPHIA DEPARTMENT OF PUBLIC PROPERTY	ROOM 790, CITY HALL PHILADELPHIA, PA 19107	MR. LEONARD GIPSON DEPUTY COMMISSIONER	215-686-4524
—CTV—	COMCAST CABLE COMMUNICATIONS	4400 WAYNE AVENUE PHILADELPHIA, PA 19140	MR. BOB HARVEY CONSTRUCTION MANAGER	215-588-1966
—SEPTA—	SOUTHEASTERN PENNSYLVANIA TRANSIT AUTHORITY (SEPTA)	1234 MARKET STREET, 12TH FLOOR PHILADELPHIA, PA 19107-3780	MR. ROBERT L. LUND JR. ASSISTANT GENERAL MANAGER	215-580-8215

PA ONE CALL 1-800-242-1776

PA ONE CALL SERIAL NO:  
20120520651, 20120520652, 20120520653, 20120520654, 20120520655, 20122750904, 20122750976, 20122750977,  
20122752313, 20122752478, 20122791072, 20122791598, 20122830777, 20122831135, 20122831387, 20122831388,  
20122831436, 20122831437, 20122831968, 20122832311, 20132540939, 20132540940, 20133080938, 20140570381,  
20140581464, 20162591821, 20162591894, 20162592424, 20162592497, 20162592498

EARTHWORK SUMMARY ENTIRE PROJECT

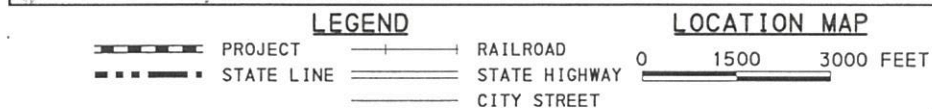
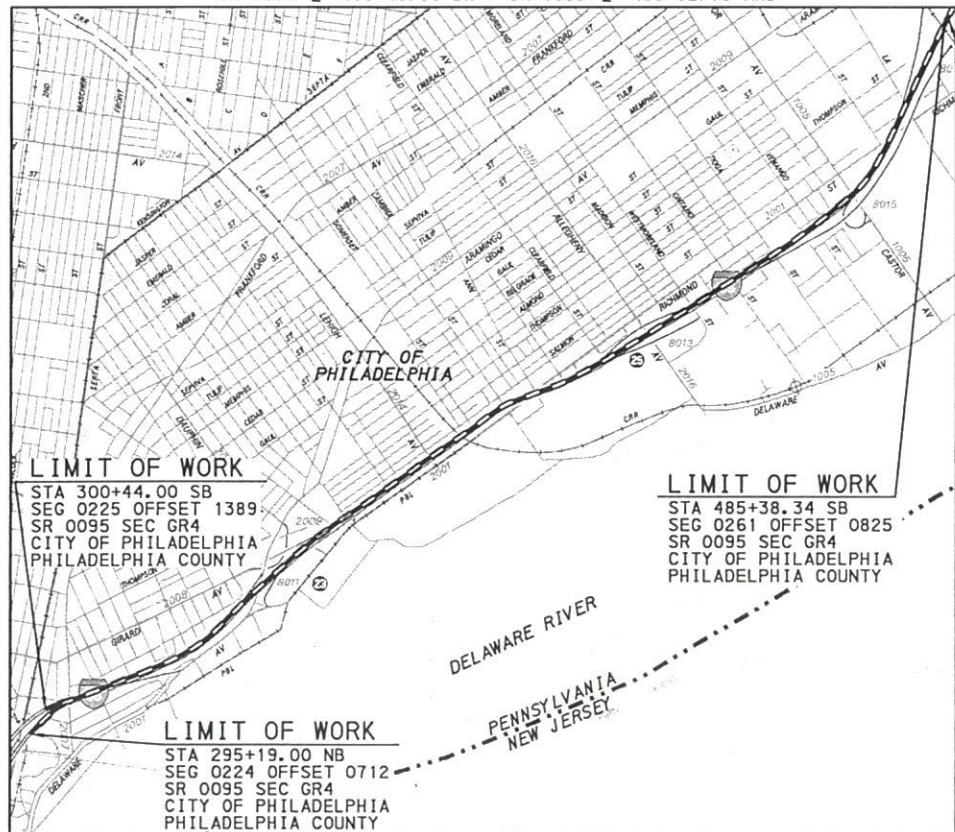
THE INFORMATION ON ESTIMATED AMOUNTS OF EARTHWORK HAS BEEN USED IN THE PRELIMINARY ESTIMATE. DO NOT USE AS A WAIVER OF ANY PROVISIONS OF THE SPECIFICATIONS AND CONTRACTS.

CUBIC YARDS OF EXCAVATION						CUBIC YARDS OF COMPLETED EMBANKMENT*	CUBIC YARDS OF BORROW EXCAVATION	CUBIC YARDS OF SELECT BORROW***	CUBIC YARDS OF WASTE
CLASS 1	CLASS 1A	CLASS 1B	CLASS 2	CLASS 3**	CLASS 4				
---	---	---	---	---	---	---	---	---	---

- \* INCLUDES ALL BORROW ITEMS
- \*\* INCLUDES XXXXX CUBIC YARDS INCIDENTAL TO PRE-FABRICATED MODULAR RETAINING WALLS
- \*\*\* ITEM 1001-0730 SELECTED BORROW EXCAVATION STRUCTURE BACKFILL
- ITEM 0703-0020 NO. 1 COARSE AGGREGATE
- ITEM 0703-0024 NO. 2A COARSE AGGREGATE
- ITEM 0703-0025 NO. 57 COARSE AGGREGATE
- ITEM 0703-0026 NO. 3 COARSE AGGREGATE
- ITEM 9703-XXXX COARSE AGGREGATE, SPECIAL FOR STRUCTURES

LIST OF EQUALITIES

SR 0095 NB 303+63.49 BK = SR 0095 NB 304+82.80 AHD  
SR 0095 SB 304+89.27 BK = SR 0095 SB 304+82.80 AHD  
SR 0095 C 409+40.00 BK = SR 0095 C 408+02.76 AHD



LIMIT OF WORK

STA 485+94.50 NB  
SEG 0260 OFFSET 0786  
SR 0095 SEC GR4  
CITY OF PHILADELPHIA  
PHILADELPHIA COUNTY

TABULATION OF SEGMENT EQUALITIES

- SEG 0224 OFFSET 0000 = STA 288+06.76 NB
- SEG 0230 OFFSET 0000 = STA 322+10.07 NB
- SEG 0234 OFFSET 0000 = STA 359+00.24 NB
- SEG 0240 OFFSET 0000 = STA 385+14.36 NB
- SEG 0244 OFFSET 0000 = STA 403+43.36 NB
- SEG 0225 OFFSET 0000 = STA 288+30.54 SB
- SEG 0231 OFFSET 0000 = STA 322+02.07 SB
- SEG 0235 OFFSET 0000 = STA 358+82.07 SB
- SEG 0241 OFFSET 0000 = STA 385+01.07 SB
- SEG 0245 OFFSET 0000 = STA 403+36.07 SB

TABULATION OF OVERALL LENGTH

SR 0095 NB STA 295+19.00 TO STA 485+94.50 = 19,075.50 FT = 3.613 MILE  
SR 0095 SB STA 300+44.00 TO STA 485+38.34 = 18,494.34 FT = 3.503 MILE

TABULATION OF CONSTRUCTION LENGTH

SR 0095 NB STA 296+19.00 TO STA 484+94.50 = 18,875.50 FT = 3.575 MILE  
SR 0095 SB STA 301+44.00 TO STA 484+38.34 = 18,294.34 FT = 3.465 MILE  
SR 2009 NB STA 10+55.35 TO STA 33+64.69 = 2309.34 FT = 0.437 MILE  
SR 2009 SB STA 10+49.39 TO STA 28+53.13 = 1803.74 FT = 0.342 MILE

LEGEND

- ∟— PROPOSED ENDWALL
- 18" PROPOSED PIPE (<36") (IF NOT LABELED, SIZE IS 10")
- 36" PROPOSED PIPE (>=36")
- STORMWATER MANAGEMENT PRACTICE (SMP) EXTENTS
- EXISTING DRAINAGE
- REMOVE EXISTING DRAINAGE
- PERMANENT PIPE CAP
- RIGHT-OF-WAY FENCE
- PERMANENT INLET CAP
- # GEOMETRY CURVE NUMBER DESIGNATION
- ] BULKHEAD
- MANHOLE
- C— PROPOSED CONDUIT
- LIMIT OF STRUCTURE FOOTING
- IMPACT ATTENUATOR
- EU --- PROPOSED UTILITY FROM GR1 (CONSTRUCTED BY OTHERS)
- W ---
- ▨ OPEN MOUTH GRATE INLET
- ▨ HIGHWAY GRATE INLET
- STANDARD INLET (PADOT)
- CONCRETE CURB CUT
- ⊙ CATENARY POLE
- # GEOMETRY CURVE NUMBER DESIGNATION
- /// ABANDON EXISTING DRAINAGE
- ABANDONED UTILITY
- ABANDON EXISTING UTILITY
- MILL AND OVERLAY
- ▨ LIMITS OF PAVEMENT REMOVAL
- ▨ SALVAGED COBBLE PAVERS

DISTRICT	COUNTY	ROUTE	SECTION	SHEET
6-0	PHILADELPHIA	0095	GR4	7 OF 302

RECORD OF EXISTING ROAD TYPES

REVISION NUMBER	REVISIONS	DATE	BY

SR 0095 SOUTHBOUND: SEGMENT 0241 OFFSET 0000 TO SEGMENT 0241 OFFSET 0906	1 1/4" LATEX CONCRETE (1984)
SEGMENT 0241 OFFSET 0906 TO SEGMENT 0241 OFFSET 1835	1 1/2" HEAVY DUTY BITUMINOUS WEARING COURSE (1997) 10" REINFORCED CEMENT CONCRETE (1968) 6" UNKNOWN SUBBASE (1968) DRAINAGE BASE WITH EDGE DRAINS (1968, UNKNOWN DEPTH)
SEGMENT 0245 OFFSET 0000 TO SEGMENT 0245 OFFSET 0277	1 1/2" HEAVY DUTY BITUMINOUS WEARING COURSE (1997) 10" REINFORCED CEMENT CONCRETE (1968) 6" UNKNOWN SUBBASE (1968) DRAINAGE BASE WITH EDGE DRAINS (1968, UNKNOWN DEPTH)
SEGMENT 0245 OFFSET 0277 TO SEGMENT 0245 OFFSET 0285	1 1/2" HMA WEARING COURSE, 64-22, 9.5 MM, E (2009) 10" REINFORCED CEMENT CONCRETE (1968) 6" UNKNOWN SUBBASE (1968) DRAINAGE BASE WITH EDGE DRAINS (1968, UNKNOWN DEPTH)
SEGMENT 0245 OFFSET 0285 TO SEGMENT 0245 OFFSET 1035	1 1/2" HMA WEARING COURSE, 64-22, 9.5 MM, E (2009) 10" REINFORCED CEMENT CONCRETE (1968) 6" UNKNOWN SUBBASE (1968) DRAINAGE BASE WITH EDGE DRAINS (1968, UNKNOWN DEPTH)
SR 8011 SPUR A: SEGMENT 0260 OFFSET 0000 TO SEGMENT 0260 OFFSET 0335	1 1/2" BITUMINOUS WEARING COURSE (1997) 8" UNKNOWN PCCP (1971)
SR 8011 RAMP B: SEGMENT 0500 OFFSET 0000 TO SEGMENT 0500 OFFSET 0360	8" UNKNOWN PCCP (1971)
SEGMENT 0500 OFFSET 0360 TO SEGMENT 0500 OFFSET 1275	1 1/4" LATEX CONCRETE (1984)
SEGMENT 0500 OFFSET 1275 TO SEGMENT 0500 OFFSET 1400	1/2" CONCRETE (2010)
SEGMENT 0500 OFFSET 1400 TO SEGMENT 0500 OFFSET 1427	8" UNKNOWN PCCP (1971)
SEGMENT 0510 OFFSET 0000 TO SEGMENT 0510 OFFSET 0926	3" UNKNOWN BITUMINOUS WEARING COURSE (1971) 10" PLAIN CEMENT CONCRETE BASE COURSE (1971)
SR 8011 RAMP D: SEGMENT 0250 OFFSET 0000 TO SEGMENT 0250 OFFSET 0214	1 1/2" BITUMINOUS WEARING COURSE (1997) 8" UNKNOWN PCCP (1971)
SEGMENT 0250 OFFSET 0214 TO SEGMENT 0250 OFFSET 0385	1" LAYTEX CONCRETE
SEGMENT 0260 OFFSET 0000 TO SEGMENT 0260 OFFSET 0100	1 1/2" BITUMINOUS WEARING COURSE (1997) 8" UNKNOWN PCCP (1971)
SEGMENT 0260 OFFSET 0100 TO SEGMENT 0260 OFFSET 0335	1 1/2" BITUMINOUS WEARING COURSE (1997) 8" UNKNOWN PCCP (1971)
SR 2009 SOUTHBOUND: SEGMENT 0011 OFFSET 0000 TO SEGMENT 0011 OFFSET 0575	1 1/2" HEAVY DUTY BITUMINOUS WEARING COURSE (1997) 3" BITUMINOUS WEARING COURSE (1971) 10" PCCP (1971)
SEGMENT 0011 OFFSET 0575 TO SEGMENT 0011 OFFSET 0750	3" BITUMINOUS (1968)
SEGMENT 0011 OFFSET 0750 TO SEGMENT 0011 OFFSET 1875	1 1/2" HEAVY DUTY BITUMINOUS WEARING COURSE (1997) 3" BITUMINOUS WEARING COURSE (1971) 10" PCCP (1971)
SR 2009 NORTHBOUND: SEGMENT 0010 OFFSET 0000 TO SEGMENT 0010 OFFSET 1144	1 1/2" HEAVY DUTY BITUMINOUS WEARING COURSE (1997) 3" BITUMINOUS WEARING COURSE (1971) 10" PCCP (1971)
SEGMENT 0010 OFFSET 1144 TO SEGMENT 0010 OFFSET 1850	1 1/2" HEAVY DUTY BITUMINOUS WEARING COURSE (1997) 3" BITUMINOUS WEARING COURSE (1971) 10" PCCP (1971)
SEGMENT 0010 OFFSET 1850 TO SEGMENT 0010 OFFSET 2152	1 1/2" HEAVY DUTY BITUMINOUS WEARING COURSE (1997) 3" BITUMINOUS WEARING COURSE (1971) 10" PCCP (1971)
SEGMENT 0010 OFFSET 2152 TO SEGMENT 0010 OFFSET 2276	1 1/2" HMA WEARING COURSE, 64-22, 9.5 MM, E (2011) 2 1/2" HMA BINDER COURSE, 64-22, 19 MM (2011) 1/2" BITUMINOUS WEARING COURSE (1971) 10" PCCP (1971)
SEGMENT 0010 OFFSET 2276 TO SEGMENT 0010 OFFSET 2375	1 1/2" HMA WEARING COURSE, 64-22, 9.5 MM, E (2011) 2 1/2" HMA BINDER COURSE, 64-22, 19 MM (2011) 2 1/2" UNKNOWN BITUMINOUS WEARING COURSE (1953) 6" BELGIAN ROCK (1914) 6" PLAIN CEMENT CONCRETE BASE COURSE (1914)

NOTE:  
THE DEPTHS OF MATERIAL SHOWN ARE FOR DESIGN PURPOSES ONLY.  
ANY RISK OF UNANTICIPATED COSTS ASSOCIATED WITH DIFFERENCES  
BETWEEN THE LISTED DEPTHS AND THE ACTUAL DEPTHS SHALL BE  
ACCEPTED BY THE CONTRACTOR.

LOCATION MAP (SHEET 1 OF 4)



DISTRICT	COUNTY	ROUTE	SECTION	SHEET
6-0	PHILADELPHIA	0095	GR4	11 OF 302
CITY OF PHILADELPHIA				
REVISION NUMBER	REVISIONS			DATE BY

**GENERAL NOTES**

THE LEGAL RIGHT-OF-WAY ON SR 0095, FORMERLY LR 1000, FROM STA 301+13.00 NB TO STA 303+20.14 NB VARIES BASED ON RIGHT-OF-WAY PLANS FOR LR 1000 SECTION B-6 R/W, APPROVED ON MAY 24, 1966.

THE LEGAL RIGHT-OF-WAY ON SR 0095, FORMERLY LR 1000, FROM STA 303+20.14 NB TO STA 308+80.77 NB VARIES BASED ON RIGHT-OF-WAY PLANS FOR LR 1000 SECTION B-7 R/W, APPROVED ON MAY 24, 1966.

THE LEGAL RIGHT-OF-WAY ON SR 0095, FORMERLY LR 1000, FROM STA 308+80.77 TO STA 412+55.98 VARIES BASED ON RIGHT-OF-WAY AND BOARD OF VIEW PLANS FOR SR 0095 SECTION GR1 R/W, APPROVED ON APRIL 3, 2009 AND REVISED AND RE-APPROVED ON NOVEMBER 1, 2010. THE LEGAL RIGHT-OF-WAY ON SR 0095, FORMERLY LR 1000, FROM STA 412+55.98 TO STA 419+00.00 VARIES BASED ON RIGHT-OF-WAY PLANS FOR LR 1000 SECTION C-3 R/W, APPROVED ON OCTOBER 30, 1962.

THE LEGAL RIGHT-OF-WAY ON SR 2001 (RICHMOND ST) FORMERLY LR 67348, FROM STA 31+47.00 TO STA 86+75.00 VARIES BASED ON RIGHT-OF-WAY AND BOARD OF VIEW PLANS FOR SR 0095 SECTION GR1 R/W, APPROVED ON APRIL 8, 2009 AND REVISED AND RE-APPROVED ON NOVEMBER 1, 2010. RECORDED-12/7/2010

THE LEGAL RIGHT-OF-WAY ON SR 2001 (OLD RICHMOND ST) FORMERLY LR 67348, FROM STA 20+13.00 TO STA 23+60.00 IS SIXTY FEET (60'), BASED ON CONDEMNATION PLANS FOR LR 1000 SECTION C-2 R/W, APPROVED ON SEPTEMBER 20, 1961.

THE LEGAL RIGHT-OF-WAY ON SR 2009 (ARAMINGO AVE) FORMERLY LR 67047, FROM STA 16+70.00 TO STA 21+36.00 VARIES BASED ON RIGHT-OF-WAY AND BOARD OF VIEW PLANS FOR SR 0095 SECTION GR1 R/W, APPROVED ON APRIL 8, 2009 AND REVISED AND RE-APPROVED ON NOVEMBER 1, 2010. RECORDED-12/7/2010

THE LEGAL RIGHT-OF-WAY ON SR 2014 (LEHIGH STREET) IS ONE HUNDRED TWENTY FEET AND THIRTY ONE HUNDRETHS (120.30) FEET BASED ON RIGHT-OF-WAY PLANS FOR LR 1000, SECTION C-2 R/W, APPROVED SEPTEMBER 20, 1961, RECORDED MARCH 11, 1963.

THE LEGAL RIGHT-OF-WAY ON SR 2016, FORMERLY LR 67288, IS ONE HUNDRED TWENTY FEET AND THIRTY ONE HUNDRETHS (120.30) FEET BASED ON RIGHT-OF-WAY PLANS FOR LR 1000, SECTION C-3 R/W, APPROVED OCTOBER 30, 1962, RECORDED NOVEMBER 11, 1962.

THE LEGAL RIGHT-OF-WAY ON COLUMBIA AVENUE IS FIFTY FEET (50') BASED ON THE PHILADELPHIA CITY RECORDS STATING THE STREET WAS OPENED BY AFFIDAVIT SEPTEMBER 15, 1883.

THE LEGAL RIGHT-OF-WAY ON PALMER STREET IS FIFTY FEET (50') BASED ON THE PHILADELPHIA CITY RECORDS STATING THE STREET WAS OPENED BY JURY ON DECEMBER 7, 1807.

THE LEGAL RIGHT-OF-WAY ON MONTGOMERY AVENUE IS FIFTY FEET (50') BASED ON THE PHILADELPHIA CITY RECORDS STATING THE STREET WAS OPENED BY JURY ON DECEMBER 1850.

THE LEGAL RIGHT-OF-WAY ON BERKS STREET IS FIFTY FEET (50') BASED ON THE PHILADELPHIA CITY RECORDS STATING THE STREET WAS OPENED BY AFFIDAVIT NOVEMBER 21, 1902.

THE LEGAL RIGHT-OF-WAY ON SUSQUEHANNA AVENUE IS FIFTY FEET (50') BASED ON THE PHILADELPHIA CITY RECORDS STATING THE STREET WAS OPENED BY JURY DECEMBER 5, 1807.

THE LEGAL RIGHT-OF-WAY ON CUMBERLAND STREET IS ONE HUNDRED TWENTY FEET (120') BASED ON THE PHILADELPHIA CITY RECORDS STATING THE STREET WAS OPENED BY DEDICATION SEPTEMBER 29, 1898.

THE LEGAL RIGHT-OF-WAY ON DYOTT STREET IS VARIABLE BASED ON THE PHILADELPHIA CITY RECORDS STATING THE STREET WAS OPENED BY ORDINANCE APRIL 1, 1899.

THE LEGAL RIGHT-OF-WAY ON SR 2016, FORMERLY LR 67288, FROM STA 13+00.00 TO STA 25+00.00 IS ONE HUNDRED TWENTY AND THIRTY ONE HUNDRETHS FEET (120.30'), BASED ON CONDEMNATION PLANS FOR LR 1000 SECTION C-3 R/W, APPROVED ON OCTOBER 30, 1962.

THE LEGAL RIGHT-OF-WAY ON MARLBOROUGH STREET IS FORTY-FIVE FEET (45') BASED ON THE PHILADELPHIA CITY RECORDS STATING THE STREET WAS OPENED BY JURY ON DECEMBER 1807.

THE LEGAL RIGHT-OF-WAY ON YORK STREET IS ONE HUNDRED FEET (100') BASED ON THE PHILADELPHIA CITY RECORDS STATING THE STREET WAS OPENED BY AFFIDAVIT DECEMBER 3, 1909.

THE LEGAL RIGHT-OF-WAY ON SERGEANT STREET IS THIRTY FEET (30') BASED ON THE PHILADELPHIA CITY RECORDS STATING THE STREET WAS OPENED BY AFFIDAVIT MAY 21, 1903.

THE LEGAL RIGHT-OF-WAY ON HUNTINGDON STREET IS SIXTY FEET (60') BASED ON THE PHILADELPHIA CITY RECORDS STATING THE STREET WAS OPENED BY AFFIDAVIT MARCH 14, 1894.

THE LEGAL RIGHT-OF-WAY ON SOMERSET STREET IS SIXTY FEET (60') BASED ON THE PHILADELPHIA CITY RECORDS STATING THE STREET WAS OPENED BY AFFIDAVIT NOVEMBER 14, 1894.

THE LEGAL RIGHT-OF-WAY ON CAMBRIA STREET IS FIFTY FEET (50') BASED ON THE PHILADELPHIA CITY RECORDS STATING THE STREET WAS OPENED BY AFFIDAVIT OCTOBER 22, 1897.

THE LEGAL RIGHT-OF-WAY ON ANN STREET IS FIFTY FEET (50') BASED ON THE PHILADELPHIA CITY RECORDS STATING THE STREET WAS OPENED BY JURY MARCH 1814.

THE LEGAL RIGHT-OF-WAY ON WILDEY STREET IS VARIABLE FROM STATION 9+54.87 TO STATION 12+86.16 IS VARIABLE BASED ON RIGHT-OF-WAY PLANS FOR LR 1000, SECTION C-1 R/W, APPROVED APRIL 13, 1964, RECORDED MAY 25, 1964.

THE LEGAL RIGHT-OF-WAY ON SALMON STREET IS VARIABLE BASED ON THE PHILADELPHIA CITY RECORDS STATING THE STREET WAS OPENED BY AFFIDAVIT FEBRUARY 7, 1903.

THE LEGAL RIGHT-OF-WAY ON EMERY STREET TWENTY FIVE FEET AND SIX ONE HUNDRETHS (25.06) FEET BASED ON RIGHT-OF-WAY PLANS FOR LR 1000, SECTION C-2 R/W, APPROVED SEPTEMBER 20, 1961, RECORDED MARCH 11, 1963.

DEMOLISH AND REMOVE BUILDINGS AND STRUCTURES MARKED [D] AS LUMP SUM ITEMS AT THE LOCATIONS INDICATED.

BUILDINGS AND STRUCTURES MARKED [E] ARE ENCROACHMENTS WHICH ARE THE RESPONSIBILITY OF THE PROPERTY OWNER TO REMOVE. IN CASE ANY ENCROACHMENTS SO MARKED ARE NOT REMOVED BY THE PROPERTY OWNER, DO NOT INTERFERE WITH OR REMOVE SAME UNTIL AUTHORIZED IN WRITING BY THE ENGINEER.

TEMPORARY CONSTRUCTION EASEMENT: AN EASEMENT TO USE THE LAND AS NECESSARY DURING CONSTRUCTION OF THE PROJECT. THE EASEMENT IS REQUIRED ONLY UNTIL THE CONSTRUCTION OR WORK INDICATED BY THE PLAN IS COMPLETED, UNLESS SOONER RELINQUISHED IN WRITING BY THE DEPARTMENT.

DRAINAGE EASEMENT. AN EASEMENT FOR THE CONSTRUCTION, INSPECTION, MAINTENANCE, REPAIR, RECONSTRUCTION AND ALTERATION OF HIGHWAY DRAINAGE FACILITIES. THE EASEMENT SHALL NOT PREVENT THE PROPERTY OWNER FROM MAKING ANY LEGAL USE OF THE AREA WHICH IS NOT DETRIMENTAL TO THE NECESSARY FLOW OF THE WATER. HOWEVER, NO STRUCTURE OF ANY KIND MAY BE ERECTED IN THE AREA, NOR ANY PIPE OR DITCH BE CONNECTED TO THE DEPARTMENT'S PIPE OR DITCH WITHOUT ADVANCED WRITTEN APPROVAL BY THE DEPARTMENT OF TRANSPORTATION.

TRAFFIC SIGNAL EASEMENT. AN EASEMENT FOR THE CONSTRUCTION, INSPECTION, OPERATION, MAINTENANCE, REPAIR, RECONSTRUCTION AND ALTERATION OF A TRAFFIC SIGNAL AND APPURTENANCE THERETO. THE EASEMENT SHALL NOT PREVENT THE PROPERTY OWNER FROM MAKING ANY LEGAL USE OF THE AREA WHICH IS NOT DETRIMENTAL TO ITS USE FOR TRAFFIC SIGNAL PURPOSES.

DETAILS, OTHER THAN THOSE INDICATED, ARE ON THE FOLLOWING STANDARD DRAWINGS:

RC-10M JUN. 1, 2010	TC-8604 JUN. 13, 2013
RC-11M JUN. 1, 2010	TC-8700C JUN. 13, 2013
RC-12M SEP. 15, 2016	TC-8701A JUN. 13, 2013
RC-13M JUN. 1, 2010	TC-8701D JUN. 13, 2013
RC-20M SEP. 15, 2016	TC-8701E JUN. 13, 2013
RC-23M JUN. 1, 2010	TC-8701S JUN. 13, 2013
RC-24M JUN. 1, 2010	TC-8702A JUN. 13, 2013
RC-25M SEP. 15, 2016	TC-8702B JUN. 13, 2013
RC-27M JUN. 1, 2010	TC-8702D JUN. 13, 2013
RC-28M SEP. 15, 2016	TC-8702E JUN. 13, 2013
RC-30M JUN. 1, 2010	TC-8710 JUN. 13, 2013
RC-31M JUN. 1, 2010	TC-8715 JUN. 13, 2013
RC-32M JUN. 1, 2010	TC-8716 JUN. 13, 2013
RC-33M JUN. 1, 2010	TC-8801 DEC. 12, 2011
RC-39M SEP. 15, 2016	TC-8802 DEC. 12, 2011
RC-45M SEP. 15, 2016	TC-8803 DEC. 12, 2011
RC-46M SEP. 15, 2016	TC-8804 DEC. 12, 2011
RC-50M AUG. 4, 2017	TC-8805 DEC. 12, 2011
RC-51M AUG. 4, 2017	TC-8806 DEC. 12, 2011
RC-54M AUG. 4, 2017	BC-721M SEP. 30, 2016
RC-58M AUG. 4, 2017	BC-722M SEP. 30, 2016
RC-59M JUN. 1, 2010	BC-732M SEP. 30, 2016
RC-60M JUN. 1, 2010	BC-735M SEP. 30, 2016
RC-61M JUN. 1, 2010	BC-736M SEP. 30, 2016
RC-63M JUN. 1, 2010	BC-739M AUG. 4, 2017
RC-64M JUN. 1, 2010	BC-741M AUG. 4, 2017
RC-67M JUN. 10, 2013	BC-743M AUG. 4, 2017
RC-73M AUG. 4, 2017	BC-752M SEP. 30, 2016
RC-80M JUN. 1, 2010	BC-753M SEP. 30, 2016
RC-82M JUN. 1, 2010	BC-754M SEP. 30, 2016
RC-83M JUN. 1, 2010	BC-755M SEP. 30, 2016
RC-84M JUN. 1, 2010	BC-757M SEP. 30, 2016
TC-8600 JUN. 13, 2013	BC-788M SEP. 30, 2016
TC-8602 JUN. 13, 2013	ITS-1200 MAR. 1, 2013

⊗ IDENTIFIES PROPOSED MONUMENTED RIGHT OF WAY LOCATIONS

THREE WORKING DAYS PRIOR TO EXCAVATION, THE CONTRACTOR MUST CONTACT PA ONE CALL SYSTEM, INC. PHONE: 1-800-242-1776, SERIAL NO: \_\_\_\_\_ FOR CITY OF PHILADELPHIA

DO NOT INTERFERE WITH THE OPERATION OF ANY FIRE HYDRANT, FIRE CALL BOX OR POLICE CALL BOX.

THIS IS A FEDERAL-AID PROJECT AND AS SUCH IS SUBJECT TO INSPECTION BY REPRESENTATIVES OF THE FEDERAL HIGHWAY ADMINISTRATION AND THE PENNSYLVANIA DEPARTMENT OF TRANSPORTATION.

HORIZONTAL CONTROL IS BASED ON THE PENNSYLVANIA STATE PLANE COORDINATE SYSTEM NORTH AMERICAN DATUM (NAD) OF 1927 SOUTH ZONE.

THE VERTICAL DATUM FOR THIS PLAN IS BASED ON THE NATIONAL GEODETIC VERTICAL DATUM (NGVD) OF 1929. THERE IS A DIFFERENCE OF -5.80 FEET BETWEEN THE NATIONAL GEODETIC VERTICAL DATUM USED FOR ELEVATIONS SHOWN ON THESE DRAWINGS AND THE DATUM USED BY THE CITY OF PHILADELPHIA THIRD SURVEY DISTRICT. ELEV 10.00' NGVD = ELEV 4.20' CITY OF PHILADELPHIA.

ALL CURVE DATA IS BASED ON THE ARC DEFINITION UNLESS OTHERWISE INDICATED.

SR 0095 IS A N.H.S. ROUTE FROM STA 300+44.00 TO STA 485+38.34

MONUMENTS OR PROPERTY LINE MARKERS LOCATED WITHIN THE LIMITS OF THIS PROJECT SHALL NOT BE DISTURBED UNTIL THEY HAVE BEEN REFERENCED BY THE CITY OF PHILADELPHIA.

ALL EXISTING DISTANCES, ALL NEW PROPERTY DISTANCES (RESULTING FROM NEW CONSTRUCTION) AND DISTANCES INVOLVING RECONSTRUCTION AND/OR RELOCATION OF CITY STREETS ARE SHOWN TO CITY OF PHILADELPHIA DISTRICT STANDARD. ALL PROJECT MEASUREMENTS ARE US STANDARD MEASUREMENTS. TO CONVERT CITY OF PHILADELPHIA DISTRICT STANDARD, A FACTOR OF 1.0025 IS TO BE USED. THAT IS 100.25 FEET US STANDARD EQUALS 100.00 FEET PHILADELPHIA DISTRICT STANDARD MEASUREMENT.

4:1 SLOPES AND FLATTER TO BE SEEDED WITH SEEDING AND SOIL SUPPLEMENTS - FORMULA B.

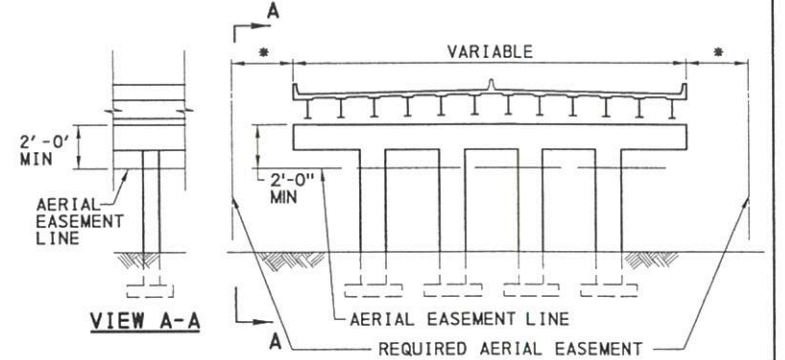
3:1 SLOPES AND STEEPER TO BE SEEDED WITH SEEDING AND SOIL SUPPLEMENTS - FORMULA C.

THERE ARE NO NAVIGABLE STREAMS WITHIN THE PROJECT LIMITS.

SR 0095, PREVIOUSLY KNOWN AS LR 1000  
 SR 2001, PREVIOUSLY KNOWN AS LR 67025  
 SR 2001, PREVIOUSLY KNOWN AS LR 67348  
 SR 2008, PREVIOUSLY KNOWN AS LR 67302  
 SR 2009, PREVIOUSLY KNOWN AS LR 67047  
 SR 2016, PREVIOUSLY KNOWN AS LR 67288  
 SR 8011, PREVIOUSLY KNOWN AS LR 1000

**AERIAL EASEMENT NOTES**

- WHERE AN AERIAL EASEMENT IS ACQUIRED, IT SHALL INCLUDE AN EASEMENT IN THE AIR FOR THE ACCOMMODATION OF THE ELEVATED HIGHWAY STRUCTURE UNLIMITED IN VERTICAL DIMENSION ABOVE THE STRUCTURE, A SURFACE EASEMENT UNLIMITED IN VERTICAL DIMENSION FOR THE ACCOMMODATION OF PIERS AND OTHER APPURTENANCES AND A TEMPORARY EASEMENT FOR CONSTRUCTION PURPOSES INCLUDING THE STORAGE OF MATERIALS DURING CONSTRUCTION FOR THE ENTIRE AREA. THE FOLLOWING LIMITATIONS SHALL BE IMPOSED ON THE PROPERTY BENEATH THE AREA AFFECTED BY THE AERIAL EASEMENT.
- NO USE SHALL BE MADE OF THE PROPERTY WHICH SHALL ENDANGER THE STRUCTURE OR THE HEALTH, SAFETY OR WELFARE OF THE TRAVELING PUBLIC.
- NO FLAMMABLE, EXPLOSIVE, DANGEROUS OR HAZARDOUS MATERIAL SHALL BE USED, PLACED OR STORED ON THE PROPERTY.
- NO BUILDING OR OTHER FACILITY SHALL BE CONSTRUCTED ON THE PROPERTY WITHOUT PRIOR AUTHORITY OF THE DEPARTMENT OF TRANSPORTATION. IF AND WHEN SUCH AUTHORITY IS GRANTED, THE PLANS FOR THE BUILDING OR FACILITY AND CONSTRUCTION METHODS SHALL BE SUBJECT TO THE APPROVAL OF THE DEPARTMENT OF TRANSPORTATION.
- NO INTERFERENCE SHALL BE MADE WITH THE RIGHT OF THE DEPARTMENT OF TRANSPORTATION TO ENTER UPON THE PROPERTY FOR THE PURPOSES OF INSPECTION, MAINTENANCE, REPAIR, PAINTING, RECONSTRUCTION OR ALTERATION OF THE STRUCTURE OR APPURTENANCES. MOVEABLE ITEMS MAY HAVE TO BE REMOVED BY THE OWNER DURING SOME OR ALL OF THE ABOVE OPERATIONS.
- ANY SUBSTANTIAL CHANGE IN PROPERTY USE TO BE MADE SUBSEQUENT TO THE ACQUISITION OF THE EASEMENT SHALL BE SUBJECT TO THE APPROVAL OF THE DEPARTMENT.
- THE NOTES ON THESE DRAWINGS SHALL NOT BE CONSTRUED AS LIMITING OR INTERFERING IN ANY WAY WITH THE PRESENT AND FUTURE OPERATION, USE, MAINTENANCE, REPAIR, RENEWAL, CHANGE, ADDITION, BETTERMENT OR ALTERATION OF THE RAILROAD AND ITS SUPPORTING FACILITIES.



\* ACTUAL DIMENSION (15' DESIRABLE)

USE OF AIRSPACE BENEATH THE ESTABLISHED GRADELINE OF THE HIGHWAY SHALL PROVIDE SUFFICIENT VERTICAL AND HORIZONTAL CLEARANCES FOR THE CONSTRUCTION, OPERATION, MAINTENANCE, VENTILATION, AND SAFETY OF THE HIGHWAY FACILITY. THE ESTATE ACQUIRED ABOVE THE AERIAL EASEMENT LINE MAY BE ENTERED ON BY MOVING VEHICLES SUCH AS TRUCKS OR RAILROAD ROLLING STOCK.

RAILROAD AERIAL EASEMENT. AN EASEMENT IN THE AIR FOR THE ACCOMMODATION OF THE ELEVATED RAILROAD STRUCTURE UNLIMITED IN VERTICAL DIMENSION ABOVE THE STRUCTURE, A SURFACE EASEMENT UNLIMITED IN VERTICAL DIMENSION FOR THE ACCOMMODATION OF PIERS AND OTHER APPURTENANCES, AND THE RIGHT OF THE RAILROAD TO ENTER THE LIMITED ACCESS RIGHT OF WAY, WHEN NECESSARY, FOR THE PURPOSES OF INSPECTION, MAINTENANCE, REPAIR, PAINTING, RECONSTRUCTION OR ALTERATION OF THE STRUCTURE OR APPURTENANCES WITH THE PRIOR APPROVAL OF THE DEPARTMENT, SUCH APPROVAL NOT TO BE UNREASONABLY WITHHELD. THE NOTES ON THESE DRAWINGS SHALL NOT BE CONSTRUED AS LIMITING OR INTERFERING IN ANY WAY WITH THE PRESENT AND FUTURE OPERATION, USE, MAINTENANCE, REPAIR, RENEWAL, CHANGE, ADDITION, BETTERMENT OR ALTERATION OF THE HIGHWAY AND ITS SUPPORTING FACILITIES.



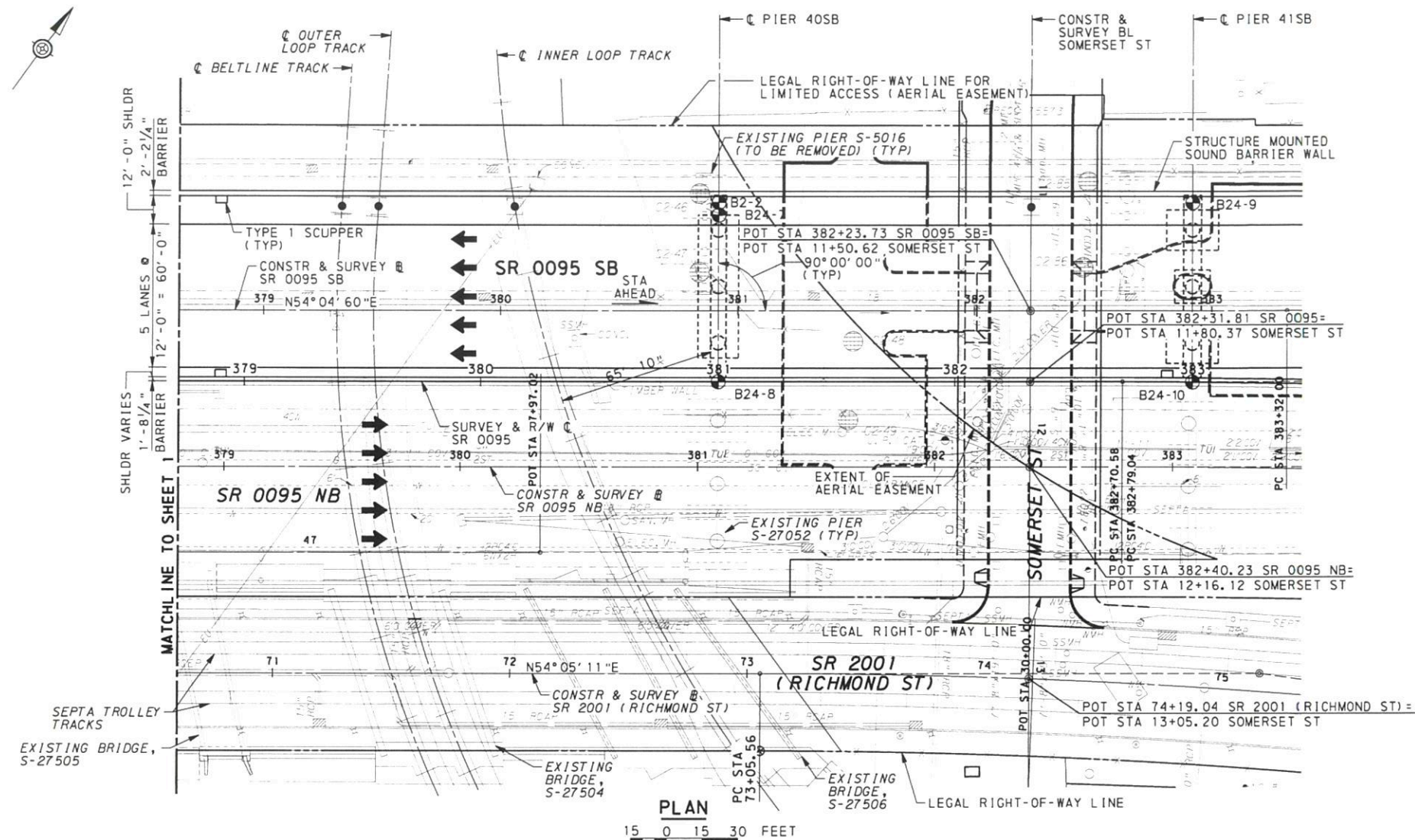
\\genphobek\en\Conphobek\en\Projects\Transportation\11560095\RD\KYG\GR4\_GenNotes.dgn  
 9/15/2017 1:26:39 PM 8166.1368





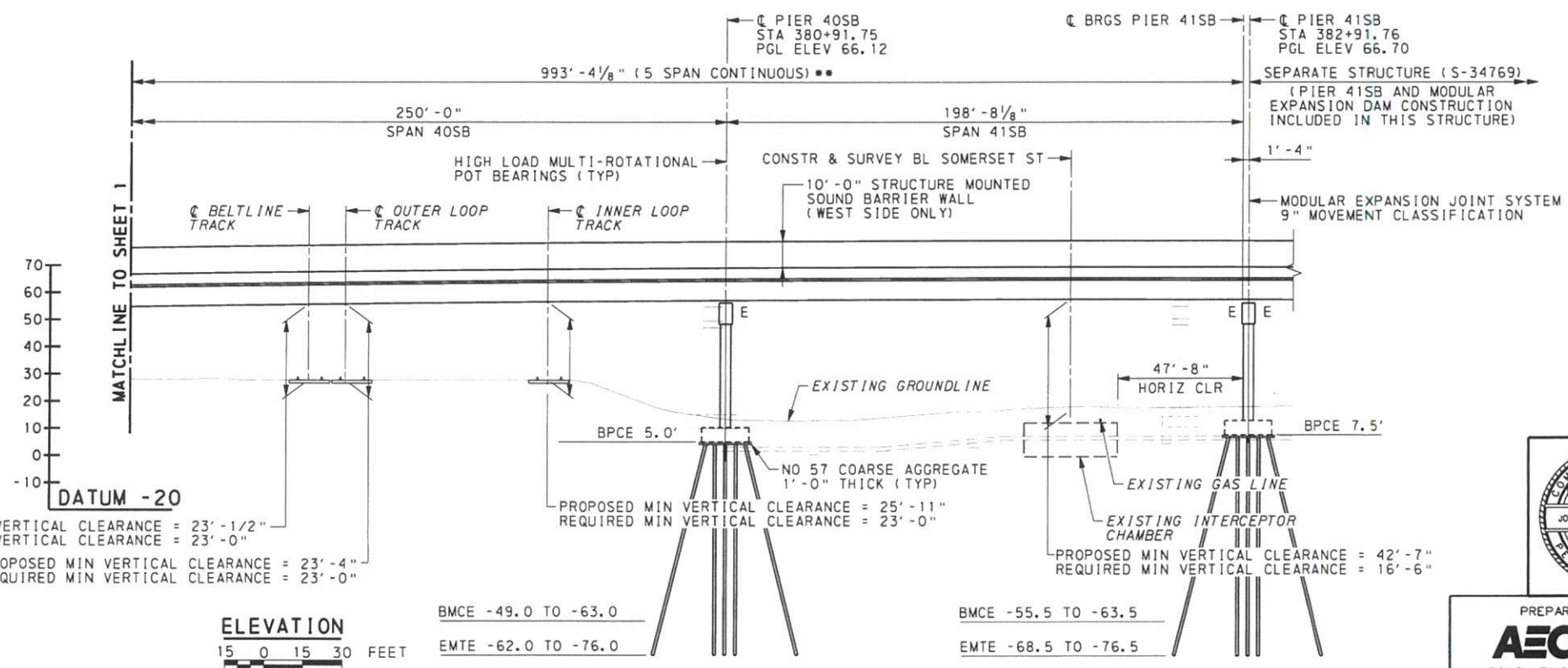


\\Conshohocken\Conshohocken\Projects\Tran\par\ration\pd6\400655.01\CADD\AStruct\GR 4\LEHIGH SB S-27051\FINAL\PRESENTATION\003\_GPE02\_LSB.dgn  
 10/10/2017 3:59:50 PM brlon.traxler



- LEGEND**
- EXISTING CONTOUR
  - PROPOSED CONTOUR
  - POINT OF EXISTING & PROPOSED MINIMUM VERTICAL CLEARANCE
  - ⊙ RECENT BORING LOCATION
  - ⊕ ORIGINAL BORING LOCATION
  - TEMPORARY EXCAVATION SUPPORT AND PROTECTION SYSTEM
  - LEGAL RIGHT-OF-WAY
  - TYPE 1 SCUPPER
  - E EXPANSION BEARING
  - F FIXED BEARING
  - ⊕ STRUCTURE MOUNTED LIGHT POLE (50' MOUNTING HEIGHT)

- NOTES**
1. FOR LIST OF SUPPLEMENTAL DRAWINGS, SEE SHEET 1.
  2. FOR GENERAL NOTES, SEE SHEETS 6 TO 8.
  3. FOR LIST OF ABBREVIATIONS, SEE SHEET 6.
  4. FOR INDEX OF DRAWINGS AND BRIDGE LOAD RATING TABLES, SEE SHEET 5.
  5. FOR LIMITS OF REMOVAL OF EXISTING STRUCTURE S-5016, REFER TO EXISTING STRUCTURE DEMOLITION SHEETS 14 TO 16.
  6. FOR BORING SCHEDULE, SEE SHEET 2.



Mark	Description	By	Chk'd	Recm'd	Date
REVISIONS					



PREPARED BY:  
**AECOM**  
 CONSULTING ENGINEERS  
 CONSHOHOCKEN, PA

**COMMONWEALTH OF PENNSYLVANIA**  
**DEPARTMENT OF TRANSPORTATION**  
**PHILADELPHIA COUNTY**  
**SR 0095 SEC GR4**  
 SEGMENT 0235 OFFSET 1912  
 SR 0095 SB STA 377+93.75 SB OVER CONRAIL,  
 LEHIGH AVE & SOMERSET ST - STRUCTURE B2  
 5-SPAN STEEL PLATE GIRDER BRIDGE  
**GENERAL PLAN & ELEVATION 11**

RECOMMENDED 9/26/2017  
 SHEET 3 OF 113  
**S-27051**

DES.	KLD
DWN.	BT
CK'D.	JJT

\*\*MEASURED ALONG CONSTR & SURVEY BL SR 0095 SB