

Jay Larry Moyer
370 W. Johnson Street (C-1)
Philadelphia, PA 19144
267-693-2633

November 13, 2017

Ms. Rosemary Chiavetta, Secretary
Pennsylvania Public Utility Commission
Commonwealth Keystone Building
400 North Street, 2nd Floor North
P. O. Box 3265
Harrisburg, PA 17105-3265

C-2017-2629683

Dear Ms. Chiavetta,

As I have, in the past, pointed to the confusion and multiplied errors of PPL Electric, I must, in this instance, point to my own errors. The first error was to submit, along with the above Complaint, a monthly statement (electric bill) which I had copied incorrectly. That document was the solar bill (#67277-97002) for June, 2017. Page 1 of the statement was correct, but Page 2 was actually a copy of the next (July) bill.

I regret the inadvertent copy error and have attached a correct copy of the bill.

I also regret my unfair "Comments" which were filed on November 9, 2017, in which I made the unjust and embarrassing error of attributing the mistake to PPL Electric.

My errors related to the June solar bill do not alter the Complaint, nor do they affect the allegations in the Complaint. I apologize, nevertheless, for my haste and ask that the Commission disregard my November 9 "Comments" about PPL and about their Answer to paragraph 4.A.1 of the Complaint.

Respectfully,

Larry Moyer



Pay/Manage your account online at ppl electric.com



Questions? Please contact us by Jul 3. **1-800-DIAL-PPL (1-800-342-5775)**
Mon-Fri: 8am to 5pm

Adjusted Bill

Page 1

PPL Electric Utilities

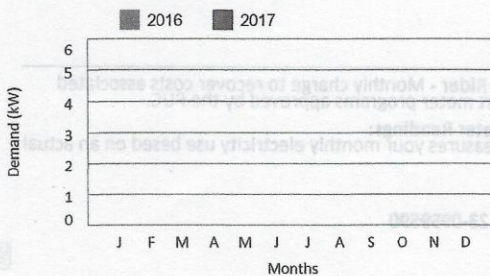
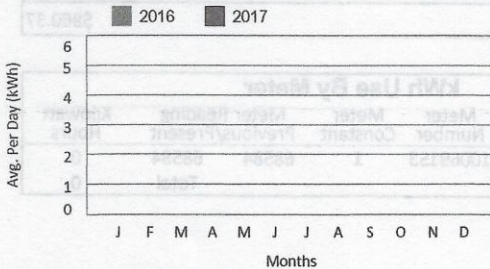
Bill Acct. No.	Due Date	Amount Due
67277-97002	Jul 3, 2017	\$860.37

Your Electric Usage Profile

Service to:
LARRY MOYER
73 WOODS RD, SOLAR PANELS
KLINGERSTOWN, PA 17941

Your next meter reading is on or about Jul 11, 2017.

This section helps you understand your year-to-year electric use by month. Meter readings are actual unless otherwise noted.



Billing Summary

(Billing details on back)

Balance as of Jun 15, 2017	\$832.69
Charges:	
Total Distribution Charges	\$26.44
Total Other Charges	\$1.24
Total Current Charges	\$860.37
Amount Due By Jul 3, 2017	\$860.37
Account Balance	\$860.37

How To Shop For Electricity

You can choose the company that supplies your electricity. Visit papowerswitch.com or www.oca.state.pa.us for supplier offers. If you are shopping, know your contract expiration date.

Here's the information you need to shop:

Bill Account Number: **67277-97002** Rate Schedule: **GS1**
Current Supplier: **PPL Electric Utilities**

PPL Electric Utilities price to compare for your rate is \$0.07490 per kWh. This changes the 1st of June and December.

Manage Your Account

Pay Your Bill	Online Options (ppl electric.com)
Online: Visit ppl electric.com	- Report an outage/check outage status
Phone: Call 1-800-342-5775	- Make a payment, view your bill and usage history.
Mail: Use envelope provided	- Sign up for alerts.
Card: MasterCard, Discover, Visa or debit, call 1-844-278-3310 (service fee applies)	- Enroll in paperless billing, automatic bill pay, budget billing.
	- View your rate schedule at: ppl electric.com/rates

Correspondence:

Customer Services, 827 Hausman Road, Allentown, PA 18104-9392

Other important information on the back of this bill →

Return this stub in the envelope provided with a check payable to PPL Electric Utilities.



PPL Electric Utilities

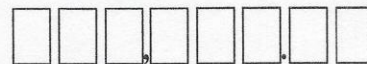
AB 01 002816 75949 B 11 A



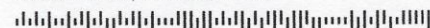
LARRY MOYER
370 W JOHNSON ST UNIT C1
PHILADELPHIA, PA 19144-3119

Bill Acct. No.	Due Date	Amount Due
67277-97002	Jul 3, 2017	\$860.37

Amount Enclosed:



PPL ELECTRIC UTILITIES
2 NORTH 9TH STREET CPC-GENN1
ALLENTOWN, PA 18101-1175



1 5600008603760000860374 6727797002

88 112

Your Message Center

- The \$832.69 balance includes \$0.83 in prior late payment charges.
- With paperless billing, you can receive and pay your PPL Electric Utilities bills online. The process is free, quick, convenient and secure. To learn more or sign up, visit ppl electric.com.
- Before digging around your home or property, you should always call the state's One Call notification system to locate any underground utility lines. You can do this by simply dialing 811, which will connect you to the One Call system. Be safe and call 811 before you dig.
- Save postage and late charges - sign up for Automated Bill Payment.

Billing Details - (Bill Acct. 67277-97002)

Page 2

Previous Balance	\$832.69
Balance as of Jun 15, 2017	\$832.69
Charges for - PPL Electric Utilities	
General Service Rate: GS1 for May 10 - Jun 9	
Distribution Charge:	
Customer Charge	22.00
Smart Meter Rider - Phase 2	3.07
Competitive Enhancement Rider	-0.01
System Improvement Charge at -0.47%	-0.12
PA Sales Tax	1.50
Total Distribution Charges	\$26.44
Other Charges for PPL Electric Utilities	
Late Payment Charge	1.24
Total of Other Charges	\$1.24
Amount Due By Jul 3, 2017	\$860.37
Account Balance	\$860.37

General Information

Generation prices and charges are set by the electric generation supplier you have chosen. The Public Utility Commission regulates distribution rates and services. The Federal Energy Regulatory Commission regulates transmission prices and services.

PPL Electric Utilities uses about \$10.82 of this bill to pay state taxes and about \$50.67 is used to pay the PA Gross Receipts Tax.

kWh Use By Meter				
Reading Dates Previous/Present	Meter Number	Meter Constant	Meter Reading Previous/Present	Kilowatt Hours
May 10 Jun 9	10069153	1	68584 68584	0
Days Billed: 30			Total	0

Understanding Your Bill

Act 129 Compliance Rider - Monthly charge to recover costs for energy efficiency and conservation programs approved by the PUC.

Smart Meter Rider - Monthly charge to recover costs associated with the smart meter programs approved by the PUC.

Competitive Enhancement Rider - Monthly charge to recover costs to support shopping for retail electricity supply.

Type(s) of Meter Readings:

Actual - Measures your monthly electricity use based on an actual reading.

Customer Charge - Monthly charge to recover costs of billing, meters and equipment.

System Improvement Charge - Monthly charge to recover costs for improving, repairing and replacing equipment that delivers electricity to your home or business.

*Federal I.D. 23-0959590

kWh (Kilowatt-hour) - A measure of how much electricity your household uses. One kilowatt-hour equals the amount of electricity used by ten 100-watt lights left on for one hour.

Late Payment Charge - Charge added if you do not pay your bill by the due date.