



17 North Second Street
12th Floor
Harrisburg, PA 17101-1601
717-731-1970 Main
717-731-1985 Main Fax
www.postschell.com

Christopher T. Wright

cwright@postschell.com
717-612-6013 Direct
717-731-1985 Direct Fax
File #: 166393

January 16, 2018

VIA ELECTRONIC FILING


Rosemary Chiavetta, Secretary
Pennsylvania Public Utility Commission
Commonwealth Keystone Building
400 North Street, 2nd Floor North
P.O. Box 3265
Harrisburg, PA 17105-3265

**Re: Letter of Notification of PPL Electric Utilities Corporation, Filed Pursuant to 52 Pa. Code Chapter 57 Subchapter G, for Approval to Site and Construct Approximately 0.4 Miles of New 230 kV Transmission Lines to Interconnect the Palooka 230-69 kV Substation in Bear Creek Township, Luzerne County, Pennsylvania
Docket No. A-2017-2638232**

Dear Secretary Chiavetta:

Enclosed for filing please find the Responses of PPL Electric Utilities Corporation to the Bureau of Technical Utility Services' Data Requests in the above-referenced proceeding.

Respectfully submitted,


Christopher T. Wright

CTW/jl
Enclosures

cc: Jordan Van Order (*Via E-Mail*)

Letter of Notification of PPL Electric Utilities Corporation,
Filed Pursuant to 52 Pa. Code Chapter 57 Subchapter G, for Approval to
Site and Construct Approximately 0.4 Miles of New 230 kV Transmission Lines to
Interconnect the Palooka 230-69 kV Substation in Bear Creek Township, Luzerne County, Pennsylvania
Docket No. A-2017-2638232

Bureau of Technical Utility Services Data Requests
(Response dated 01/16/18)

A-1 Reference the LON, Paragraph 25 stating that the total estimated cost of the proposed project is \$2.5 million. Please state the name of the individual or entity that will own, maintain, and pay for the proposed project.

Response:

PPL Electric will own, operate and maintain the two new double circuit 230 kV connecting lines required to interconnect the new Palooka 230-69 kV with the 230 kV system. The cost for this Project will be paid by PPL Electric. The costs and cost recovery of this Project are subject to the regulatory jurisdiction of the Federal Energy Regulatory Commission.

Letter of Notification of PPL Electric Utilities Corporation,
Filed Pursuant to 52 Pa. Code Chapter 57 Subchapter G, for Approval to
Site and Construct Approximately 0.4 Miles of New 230 kV Transmission Lines to
Interconnect the Palooka 230-69 kV Substation in Bear Creek Township, Luzerne County, Pennsylvania
Docket No. A-2017-2638232

Bureau of Technical Utility Services Data Requests
(Response dated 01/16/18)

A-2 Reference the LON, Paragraph 26 stating that construction will begin as soon as practical. Please state the approximate date that construction will begin.

Response:

Subject to Commission approval, the planned construction date for this Project is March 1, 2018.

Letter of Notification of PPL Electric Utilities Corporation,
Filed Pursuant to 52 Pa. Code Chapter 57 Subchapter G, for Approval to
Site and Construct Approximately 0.4 Miles of New 230 kV Transmission Lines to
Interconnect the Palooka 230-69 kV Substation in Bear Creek Township, Luzerne County, Pennsylvania
Docket No. A-2017-2638232

Bureau of Technical Utility Services Data Requests
(Response dated 01/16/18)

A-3 Reference the LON, Paragraph 19 stating that an 8.25-mile section of the Jenkins-Plymouth 69 kV line can be retired and the need to rebuild the line can be avoided. Please state the approximate cost that would be associated with rebuilding this section of transmission line.

Response:

PPL Electric has not undertaken a detailed engineering analysis of the scope and costs to rebuild the 8.25-mile section of the Jenkins-Plymouth 69 kV Transmission Line. However, based on an order-of-magnitude estimate developed using averages of recent costs for similar projects and without an in-depth analysis of field investigation, PPL Electric estimates that the cost to rebuild this section of the Jenkins-Plymouth 69 kV Transmission Line would be approximately \$19.4 million.

Letter of Notification of PPL Electric Utilities Corporation,
Filed Pursuant to 52 Pa. Code Chapter 57 Subchapter G, for Approval to
Site and Construct Approximately 0.4 Miles of New 230 kV Transmission Lines to
Interconnect the Palooka 230-69 kV Substation in Bear Creek Township, Luzerne County, Pennsylvania
Docket No. A-2017-2638232

Bureau of Technical Utility Services Data Requests
(Response dated 01/16/18)

- A-4 Reference the LON, Paragraph 22 stating that a total of four new monopole structures will be installed. Attachment 3, Figure 3-1 appears to show nine new transmission structures. Please reconcile.**

Response:

As stated in Attachment 2 to the Letter of Notification, each new double-circuit 230 kV connecting line will require two new monopole structures (four in total). The additional tower structures shown in Figure 3-1 are not being installed as part of this Project but, rather, are part of a previously-approved rebuild of the existing Susquehanna-Jenkins 230 kV Transmission Line. *See Letter of Notification of PPL Electric Utilities Corporation, Filed Pursuant to 52 Pa. Code Chapter 57 Subchapter G, for Approval to Rebuild Approximately 24.4 Miles of the Existing Susquehanna-Jenkins 230 kV Transmission Line Located in Luzerne County, Pennsylvania, Docket No. A-2016-2526304 (April 7, 2016).* The structures associated with the rebuild project have been removed from the revised version of Figure 3-1, which is being provided as Attachment A-4.

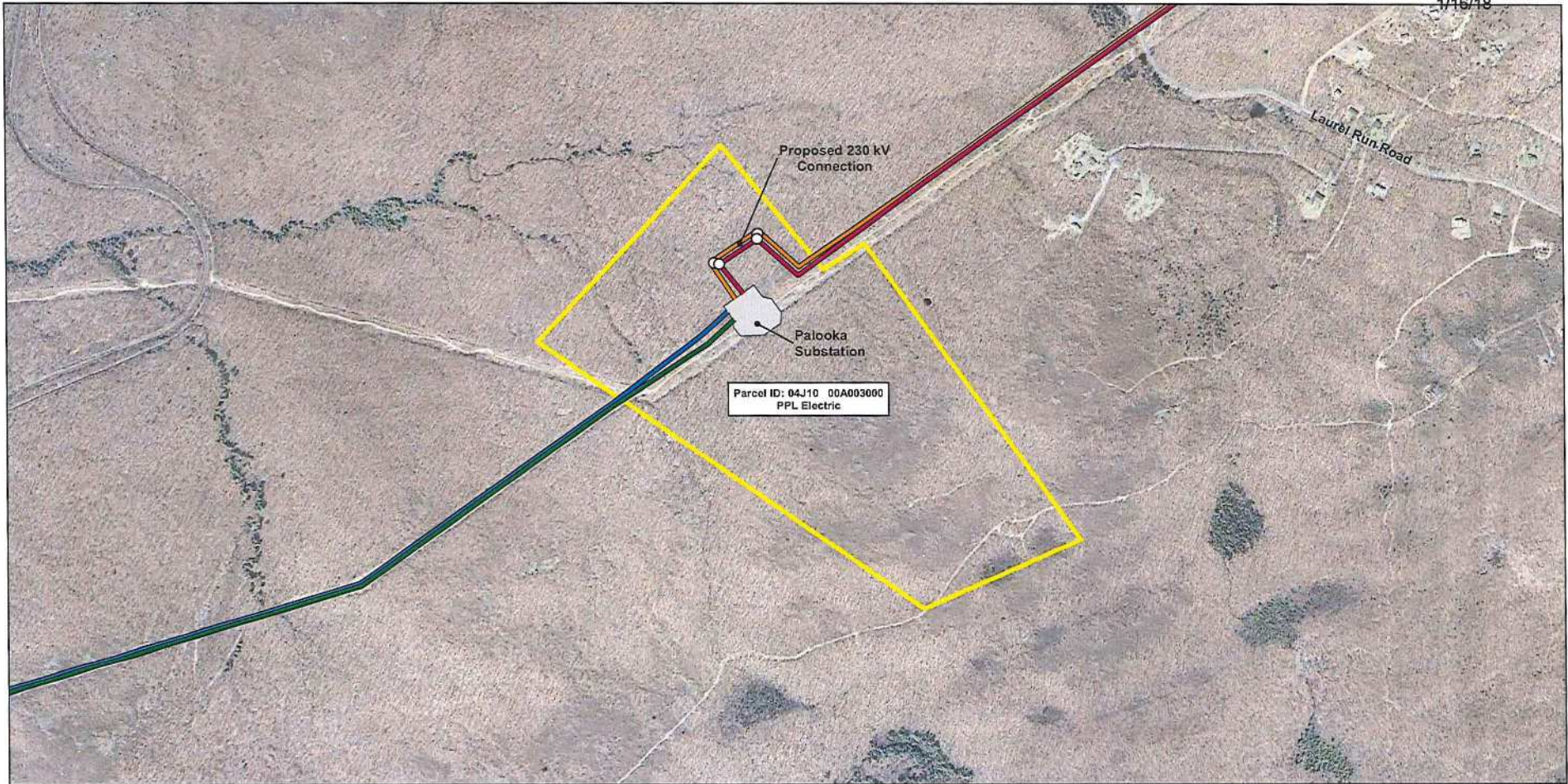
Letter of Notification of PPL Electric Utilities Corporation,
Filed Pursuant to 52 Pa. Code Chapter 57 Subchapter G, for Approval to
Site and Construct Approximately 0.4 Miles of New 230 kV Transmission Lines to
Interconnect the Palooka 230-69 kV Substation in Bear Creek Township, Luzerne County, Pennsylvania
Docket No. A-2017-2638232

Bureau of Technical Utility Services Data Requests
(Response dated 01/16/18)

A-5 Reference the LON, Attachment 3, Figure 3-1 showing a new transmission structure northwest west of the proposed Palooka Substation and near Laurel Run Road. Please explain why this new structure is required.

Response:

The new tower structures located northwest and north of the Palooka Substation as shown in Figure 3-1 are the new monopole structures required to support the two new double-circuit 230 kV connecting lines that will each extend approximately 1,100 feet to interconnect the new Palooka 230-69 kV Substation with the existing Susquehanna-Jenkins 230 kV Transmission Line and Susquehanna-Acahela 230 kV Transmission Line. The remaining tower structures shown in Figure 3-1 (located west and northeast of the Palooka Substation) are part of a previously-approved rebuild of the existing Susquehanna-Jenkins 230 kV Transmission Line. The structures associated with the rebuild project have been removed from the revised version of Figure 3-1. *See* response to A-4.



Legend

- New Transmission Structures for Palooka Substation
- Palooka - Acahela 230 kV Transmission Line
- Palooka - Jenkins 230 kV Transmission Line
- Susquehanna - Palooka #1 230 kV Transmission Line
- Susquehanna - Palooka #2 230 kV Transmission Line
- ▭ Parcel Boundary

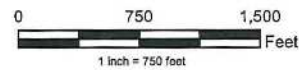
Notes

1. Existing Transmission Lines were digitized using aerial imagery with the KMZ received from PPL in February 2014 as a guide.
2. Parcel boundary surveyed by PPL was provided in July 2016.
3. Palooka Substation footprint and 230 kV connecting lines provided by POWER engineering in July 2017.



NAD 1983 State Plane
 Pennsylvania North FIPS 3701
 Projection: Lambert Conformal Conic
 Linear Unit: US Foot

References:
 Imagery Basemap (ESRI)



**Figure 3-1: Aerial Map of the Project
 Palooka Substation 230 kV Extension**

**Bear Creek Township,
 Luzerne County, Pennsylvania**

PPL Electric Utilities
 Allentown, Pennsylvania

Prepared By: NAB	Checked By: DV
Date: 04/14/2017	Date: 1/11/2018

VERIFICATION

I, David Bonenberger being the Vice President-Transmission and Substations at PPL Electric Utilities Corporation, hereby state that the facts above set forth are true and correct to the best of my knowledge, information and belief and that I expect PPL Electric Utilities Corporation to be able to prove the same at a hearing held in this matter. I understand that the statements herein are made subject to the penalties of 18 Pa.C.S. § 4904 relating to unsworn falsification to authorities.

Date: 1/15/18

David Bonenberger