



An **AEP** Company

F. Mitchell Dutton
DIRECT LINE: (614) 682-4350
mdutton@aepenergy.com

May 31, 2018

Via Overnight Delivery

Rosemary Chiavetta, Secretary
Pennsylvania Public Utility Commission
Commonwealth Keystone Building
400 North Street, 2nd Floor, Room N201
Harrisburg, PA 17120

RECEIVED

MAY 31 2018

PA PUBLIC UTILITY COMMISSION
SECRETARY'S BUREAU

**Re: AEP Energy, Inc.'s Annual Petition for Renewal of Bond Reduction
Docket No. A-2009-2132755**

Dear Ms. Chiavetta:

Please accept this letter as AEP Energy, Inc.'s Annual Petition for Renewal of its Bond Reduction. In support of AEP Energy, Inc.'s eligibility for this continued bond reduction, enclosed please find the following documentation:

- 1) A Tax Letter of Good Standing from the Department of Revenue;
- 2) A Listing of AEP Energy, Inc.'s Gross Receipts for the most recent four quarters (Q2 2017-Q12018) (Original and Redacted);
- 3) A \$350.00 check for the filing fee;
- 4) Proof of Service of the Petition of the Statutory Advocated and Affected EDCs;
- 5) Screenprint of EFT request for prepayment of gross receipt taxes (Original and Redacted); and
- 6) Emails confirming AEPS compliance as well as screenshots from data entry (Original and Redacted).

Please contact me if I can be of further assistance.

Respectfully,

F. Mitchell Dutton
Regulatory Counsel

enclosures

Tax Letter of Good Standing

RECEIVED

MAY 31 2018

PA PUBLIC UTILITY COMMISSION
SECRETARY'S BUREAU

Bureau of Compliance
P O Box 280946
Harrisburg, PA 17128-0946
www.revenue.pa.gov



Wednesday, May 30, 2018

Attention: Paul Batchelder

RECEIVED

MAY 31 2018

PA PUBLIC UTILITY COMMISSION
SECRETARY'S BUREAU

RE:
AEP Energy, Inc.
P.O. Box 16428
Columbus, OH 43216

Federal EIN
Social Security Number: N/A
Business Partner Number: 1000218543

Dear Requester,

I am writing to confirm that the above-referenced tax accounts of AEP Energy, Inc. are current. All returns have been filed with payment as of Wednesday, May 30, 2018. This confirmation is not intended to represent a "Bulk Sale Clearance" under the provision of section 1403 of the fiscal code. This letter does confirm that the account above is in good standing.

Sincerely,

A handwritten signature in black ink, appearing to read 'K Clark'.

Karen Clark
PA Department of Revenue,
Bureau of Compliance,
Business License Clearance Division

Gross Receipts Spreadsheet (REDACTED)

Period	Revenue	KWh
2017		
4		
5		
6		
7		
8		
9		
10		
11		
12		
2018		
1		
2		
3		
Total		

*Source 3rd & 4th Quarter 2017 & 1st Quarter 2018 PA Revenue and Volume Files

**Used last years PA Gross Revenue by Month Summary for 2nd Quarter

Proof of Prepaid Gross Taxes (REDACTED)

4 Related Documents Invoice Information **Payments** Voucher Attributes History Error Summary

Business Unit: 400 Invoice Number: 031518400PAGR
Voucher ID: 00049449 Invoice Date: 03/01/2018
Voucher Style: Regular
Total: [REDACTED]
Vendor: COMMONWEALTH OF PENNSYLVANIA Pay Terms: NET-30 Scheduled Payment
PO BOX 280908
HARRISBURG, PA 17128-0908

Payment Information [REDACTED]

Scheduled Payment: 1
Remit to: 0000094356 [REDACTED] Gross Amount: [REDACTED] USD
Location: EFT Discount: 0.00 USD
Address: 1
COMMONWEALTH OF PENNSYLVANIA
PO BOX 280908
HARRISBURG, PA 17128-0908
Scheduled Due: 03/14/2018
Net Due: 03/15/2018
Discount Due:
Accounting Date: 03/14/2018

Payment Method [REDACTED]

Bank: CB Pay Group:

RECEIVED

MAY 31 2018

PA PUBLIC UTILITY COMMISSION
SECRETARY'S BUREAU

AEPS Compliance Data (REDACTED)

REDACTED

Kris Woods

From: Ahmadou Bayo
Sent: Wednesday, April 18, 2018 10:29 AM
To: Kris Woods
Cc: DL Risk
Subject: PennAEPS Filing
Attachments: 201712 - PennAEPS.PNG; 201801 - PennAEPS.PNG; 201802 - PennAEPS.PNG

Hi Kris,

The following screenshots were taken to capture the PennAEPS filing.

Thank You.

AEP Energy Partners, Inc. (BlueStar) Load Served

Instructions:

Select the month and year for the load that you will be entering. Fill in data for each EDC where you served load during that month. When you've finished, press the "Submit data" button at the bottom of the page. You can continue to change your entries until they are locked.

REDACTED

Month:

01

Year:

2017

Select Month/Year

EDC

Citizens Electric Company of Lewisburg, PA

Duquesne Light Company

Metropolitan Edison Company

PECO Energy Company

Pennsylvania Electric Company

Pennsylvania Power Company

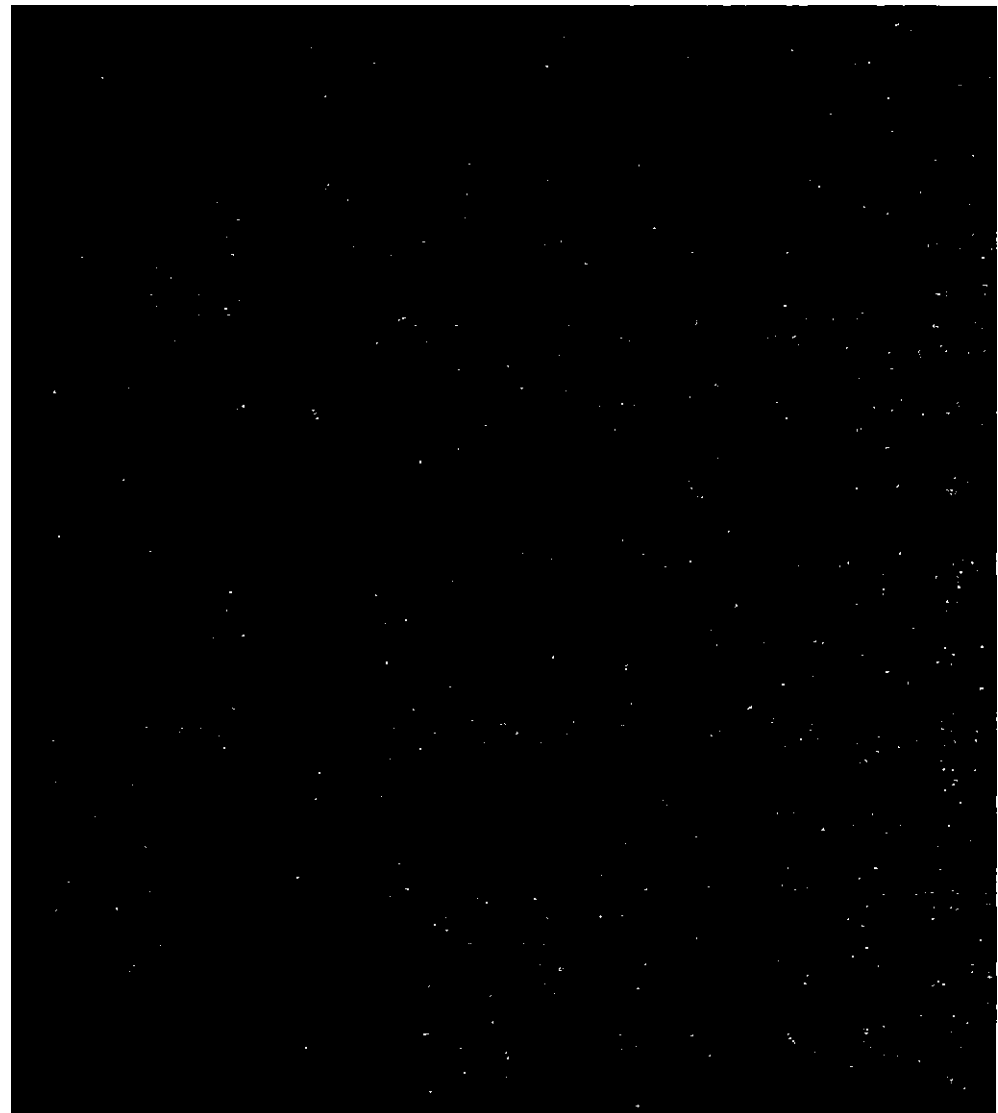
Pike County Light and Power Company

PPL Electric Utilities Corp. cba PPL Utilities (LSE)

UGI Utilities, Inc.

Wellscoro Electric Company

West Penn Power Company d/b/a Allegheny Power



AEP Energy Partners, Inc. (BlueStar) Load Served

REDACTED

Instructions:

Select the month and year for the load that you will be entering. Fill in data for each EDC where you served load during that month. When you've finished, press the "Submit data" button at the bottom of the page. You can continue to change your entries until they are locked.

Month: 1

Year: 2018

Select Month/Year

EDC

Citizens Electric Company of Lewisburg PA

Duquesne Light Company

Metropolitan Edison Company

PECO Energy Company

Pennsylvania Electric Company

Pennsylvania Power Company

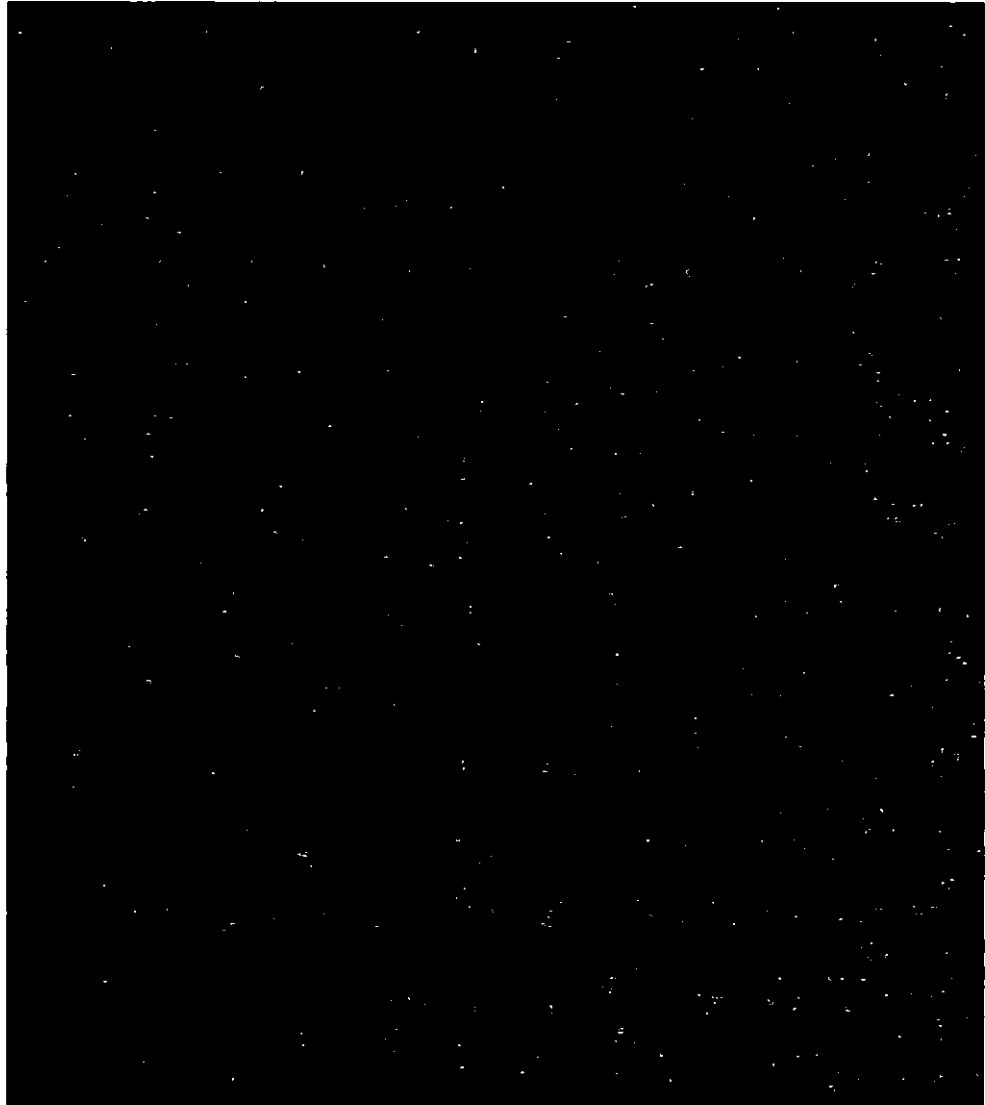
Pike County Light and Power Company

FPL Electric Utilities Corp. dba FPL Utilities (LSE)

UGI Utilities, Inc.

Wellsboro Electric Company

West Penn Power Company d/b/a Allegheny Power



AEP Energy Partners, Inc. (BlueStar) Load Served

REDACTED

Instructions:

Select the month and year for the load that you will be entering. Fill in data for each EDC where you served load during that month. When you've finished, press the "Submit data" button at the bottom of the page. You can continue to change your entries until they are locked.

Month: ▼

Year: 2011 ▼

Select Month/Year

EDC

Citizens Electric Company of Lewisburg PA

Duquesne Light Company

Metropolitan Edison Company

PECC Energy Company

Pennsylvania Electric Company

Pennsylvania Power Company

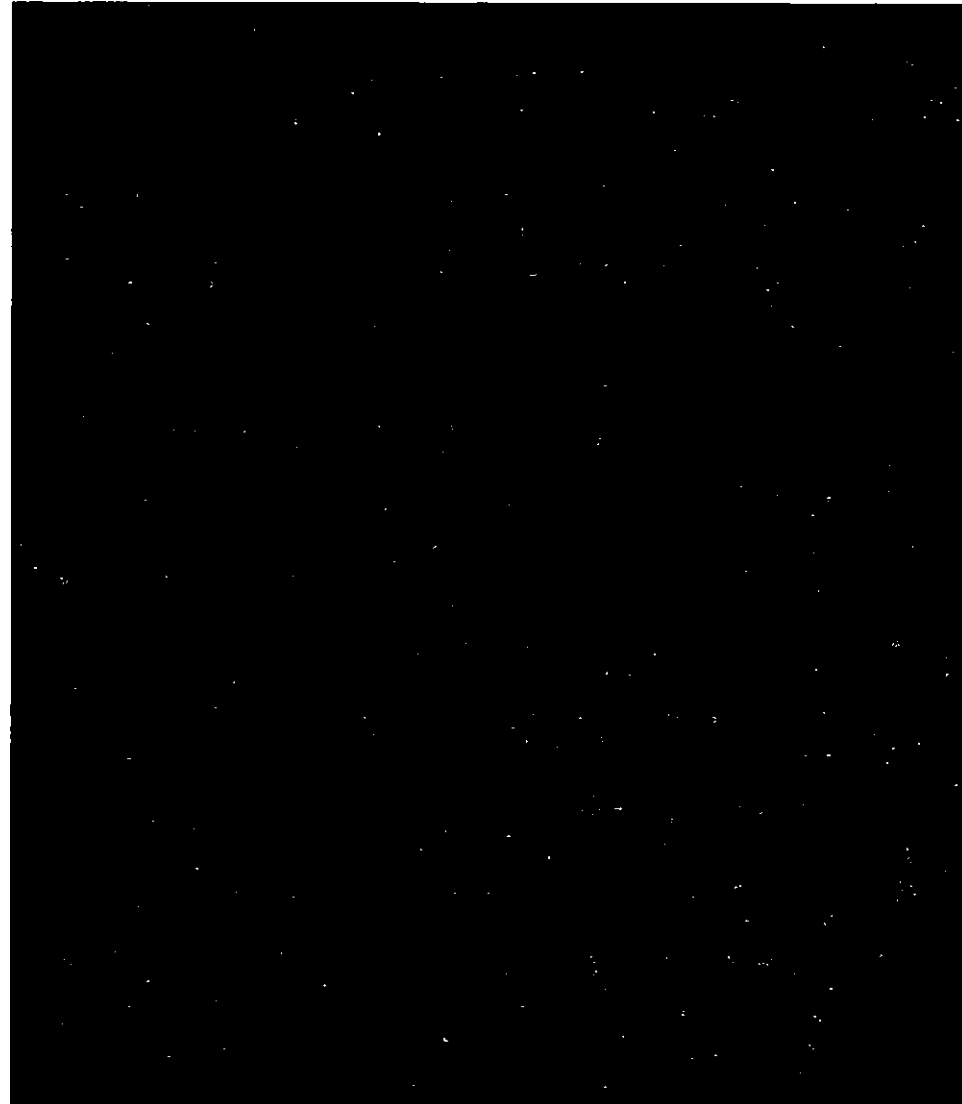
Pike County Light and Power Company

PPL Electric Utilities Corp. dba FPL Utilities (LSE)

UGI Utilities, Inc.

Wellspan Electric Company

West Penn Power Company d/b/a Allegheny Power



Kris Woods

From: Ahmadou Bayo
Sent: Wednesday, October 18, 2017 2:53 PM
To: Kris Woods
Cc: DL Risk
Subject: PennAEPS Filing
Attachments: 201706- Penn AEPS.PNG; 201707- Penn AEPS.PNG; 201708- Penn AEPS.PNG

Hi Kris,

The following screenshots were taken to capture the PennAEPS filing.

Thank You.

AEP Energy Partners, Inc. (BlueStar) Load Served

REDACTED

Instructions:

Select the month and year for the load that you will be entering. Fill in data for each EDC where you served load during that month. When you've finished, press the "Submit data" button at the bottom of the page. You can continue to change your entries until they are locked.

Month ▼

Year 2017 ▼

Select Month/Year

EDC

Citizens Electric Company of Lewisburg, PA

Duquesne Light Company

Metropolitan Edison Company

PECO Energy Company

Pennsylvania Electric Company

Pennsylvania Power Company

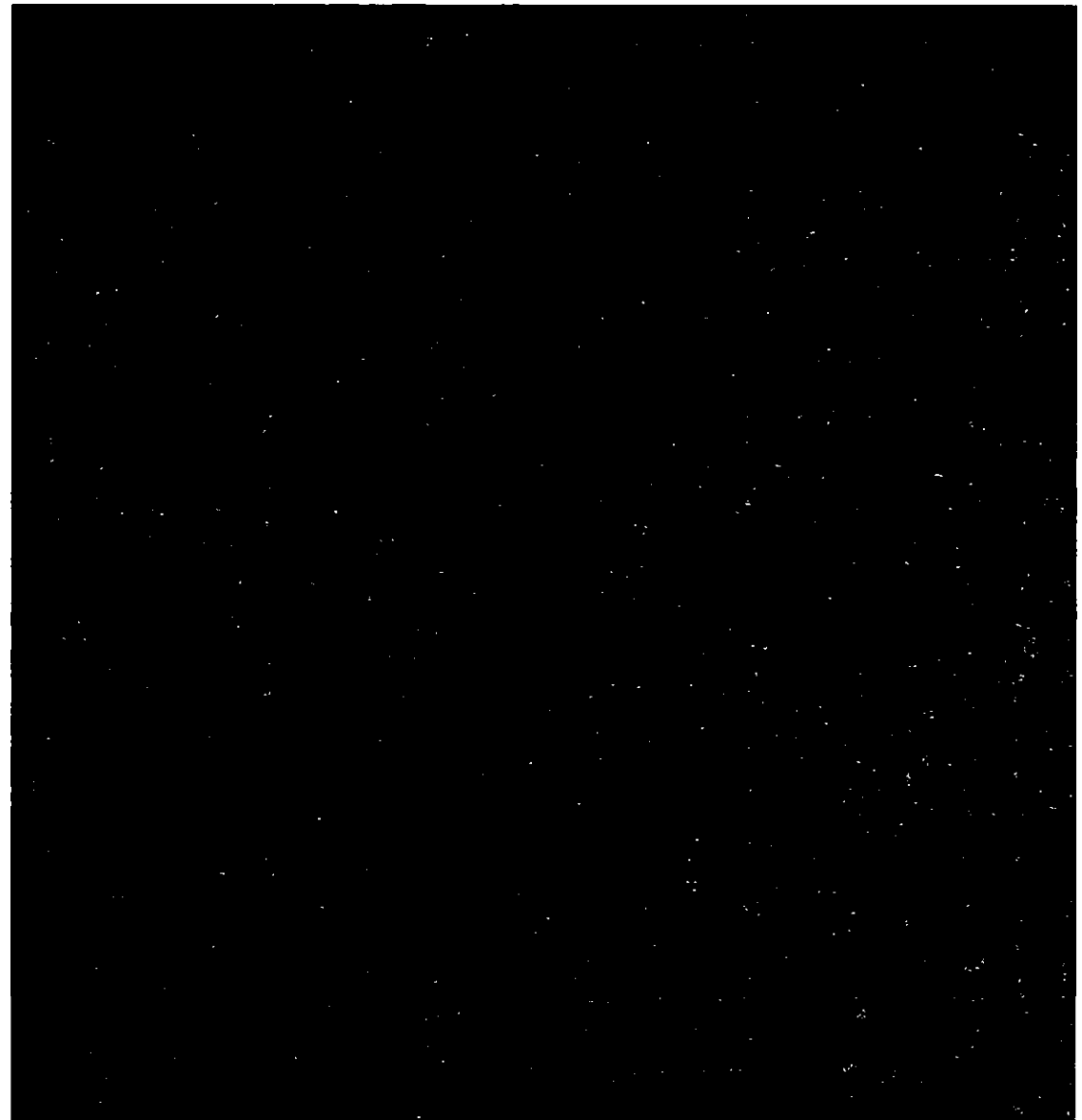
Pike County Light and Power Company

PPL Electric Utilities Corp. dba PPL Utilities (LSE)

UGI Utilities, Inc.

Wellsboro Electric Company

West Penn Power Company (dba Allegheny Power)



AEP Energy Partners, Inc. (BlueStar) Load Served

REDACTED

Instructions:

Select the month and year for the load that you will be entering. Fill in data for each EDC where you served load during that month. When you've finished, press the "Submit data" button at the bottom of the page. You can continue to change your entries until they are locked.

Month: 7

Year: 2017

Select Month/Year

EDC

Citizens Electric Company of Lewisburg, PA

Duquesne Light Company

Metropolitan Edison Company

PECO Energy Company

Pennsylvania Electric Company

Pennsylvania Power Company

Pike County Light and Power Company

PPL Electric Utilities Corp dba PPL Utilities (LSE)

UGI Utilities, Inc.

Wellsboro Electric Company

West Penn Power Company d/b/a Allegheny Power



AEP Energy Partners, Inc. (BlueStar) Load Served

REDACTED

Instructions:

Select the month and year for the load that you will be entering. Fill in data for each EDC where you served load during that month. When you've finished, press the "Submit data" button at the bottom of the page. You can continue to change your entries until they are locked.

Month: 8 ▾

Year: 2017 ▾

Select Month/Year

EDC

Citizens Electric Company of Lewisburg, PA

Duquesne Light Company

Metropolitan Edison Company

PECO Energy Company

Pennsylvania Electric Company

Pennsylvania Power Company

Pike County Light and Power Company

PPL Electric Utilities Corp dba PPL Utilities (LSE)

UGI Utilities, Inc.

Wellsboro Electric Company

West Penn Power Company d/b/a Allegheny Power



Kris Woods

From: Holly P Wheller <hpwheller@aepes.com>
Sent: Tuesday, June 20, 2017 9:23 AM
To: Kris Woods
Cc: DL Risk
Subject: PennAEPS Filing
Attachments: 201703- Penn AEPS.PNG; 201704- Penn AEPS.PNG; 201705- Penn AEPS.PNG

Kris,

The following screenshots were taken to capture the PennAEPS filing.

ACP Energy Partners, Inc. (BlueStar) Load Served

Instructions:

Select the month and year for the load that you will be entering. Fill in data for each EDC where you served load during that month. When you've finished, press the "Submit data" button at the bottom of the page. You can continue to change your entries until they are locked.

REDACTED

Month: 3 ▾

Year: 2017 ▾

Select Month/Year

EDC

Citizens Electric Company of Lewisburg, PA

Duquesne Light Company

Metropolitan Edison Company

PECO Energy Company

Pennsylvania Electric Company

Pennsylvania Power Company

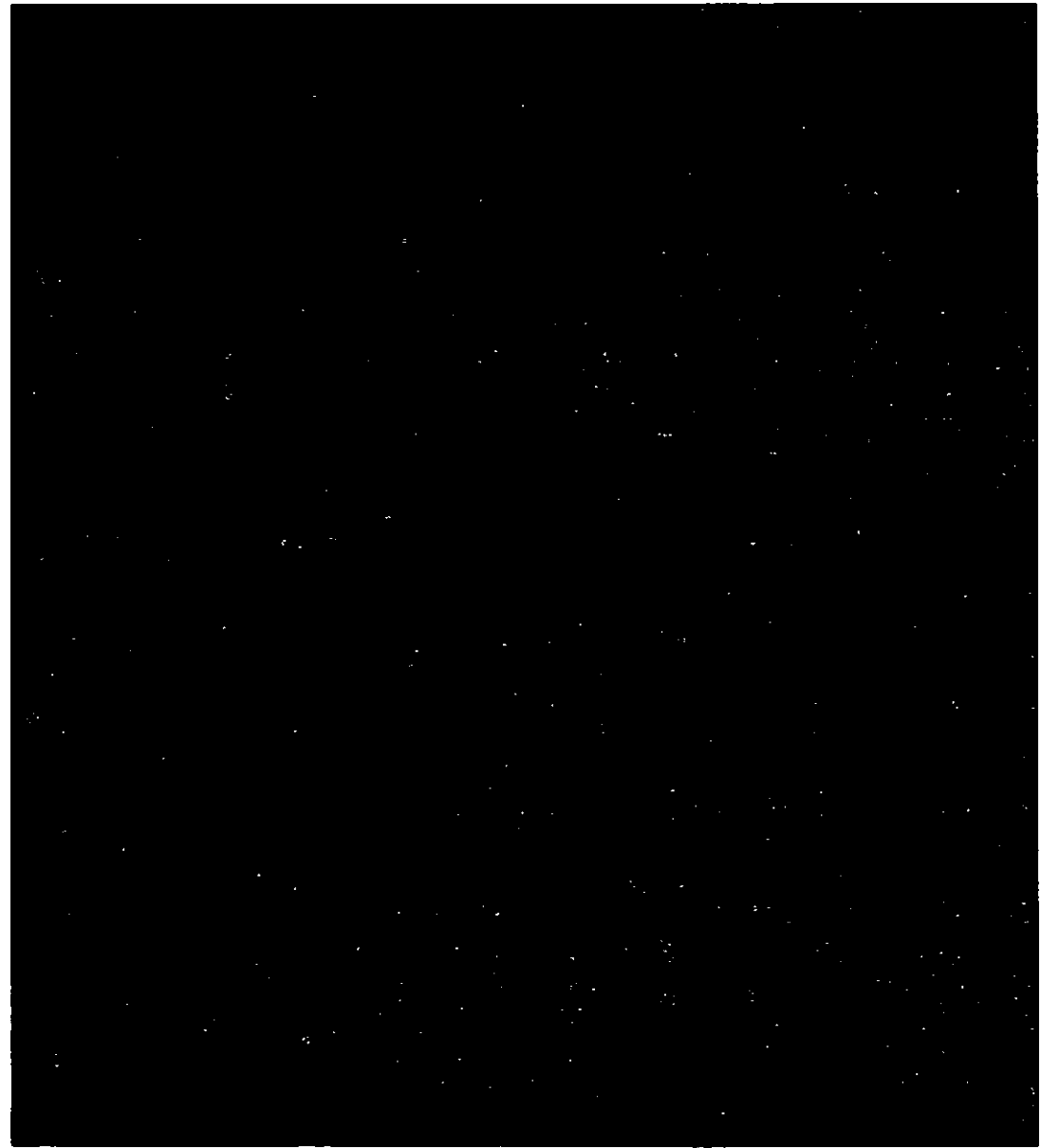
Pike County Light and Power Company

PPL Electric Utilities Corp d/b/a PPL Utilities (LSE)

UGI Utilities, Inc.

Wellsboro Electric Company

West Penn Power Company d/b/a Allegheny Power



AEP Energy Partners, Inc. (BlueStar) Load Served

REDACTED

Instructions:

Select the month and year for the load that you will be entering. Fill in data for each EDC where you served load during that month. When you've finished, press the "Submit data" button at the bottom of the page. You can continue to change your entries until they are locked.

Month: 4 ▾

Year: 2017 ▾

Select Month/Year

EDC

Citizens Electric Company of Lewisburg, PA

Duquesne Light Company

Metropolitan Edison Company

PECO Energy Company

Pennsylvania Electric Company

Pennsylvania Power Company

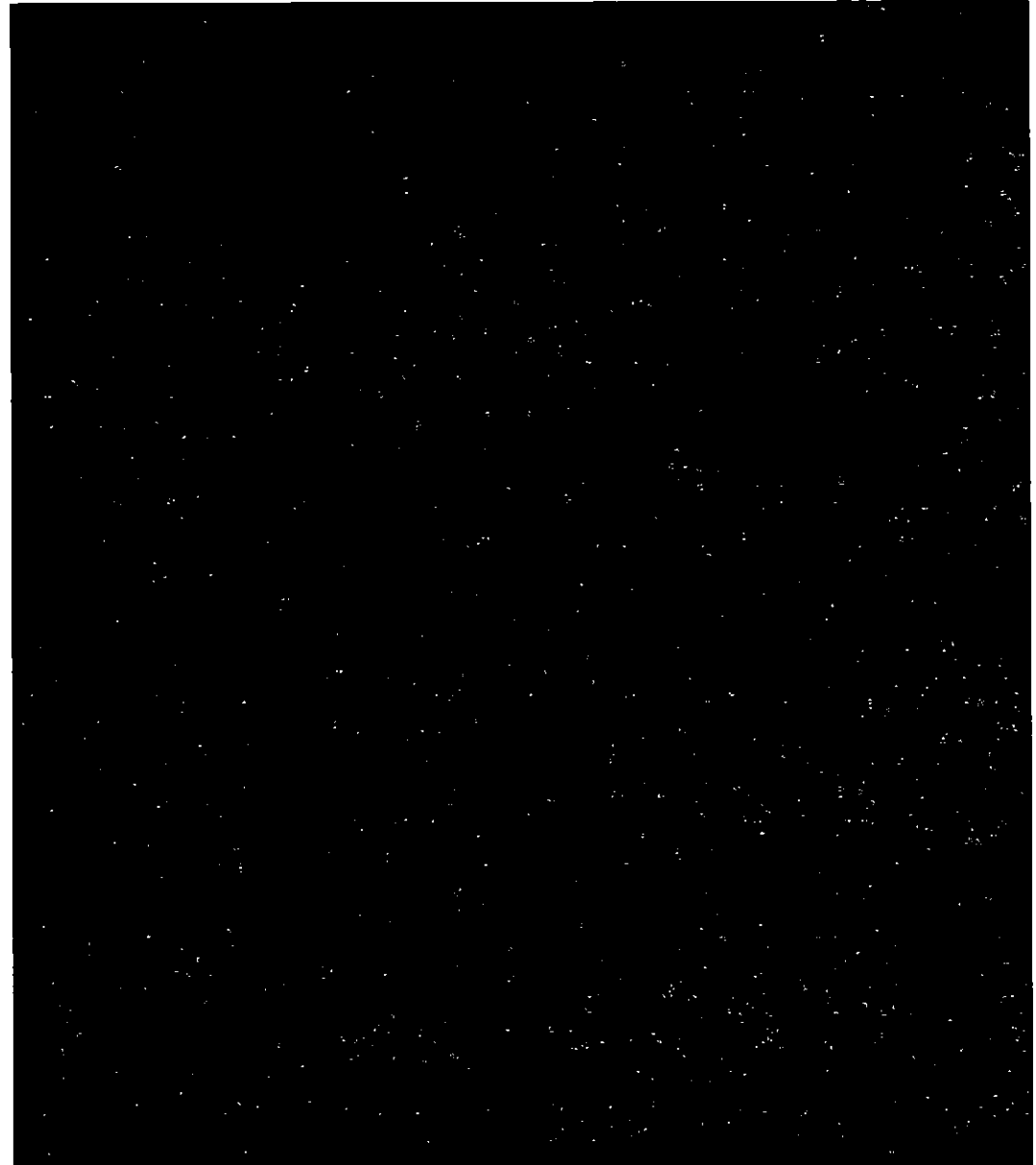
Pike County Light and Power Company

FPL Electric Utilities Corp. dba FPL Utilities (LSE)

UGI Utilities, Inc.

Wellborn Electric Company

West Penn Power Company d/b/a Allegheny Power



AEP Energy Partners, Inc. (BlueStar) Load Served

REDACTED

Instructions:

Select the month and year for the load that you will be entering. Fill in data for each EDC where you served load during that month. When you've finished, press the "Submit data" button at the bottom of the page. You can continue to change your entries until they are locked.

Month: 5 ▾

Year: 2017 ▾

Select Month/Year

EDC

Citizens Electric Company of Lewisburg, PA

Duquesne Light Company

Metropolitan Edison Company

PECO Energy Company

Pennsylvania Electric Company

Pennsylvania Power Company

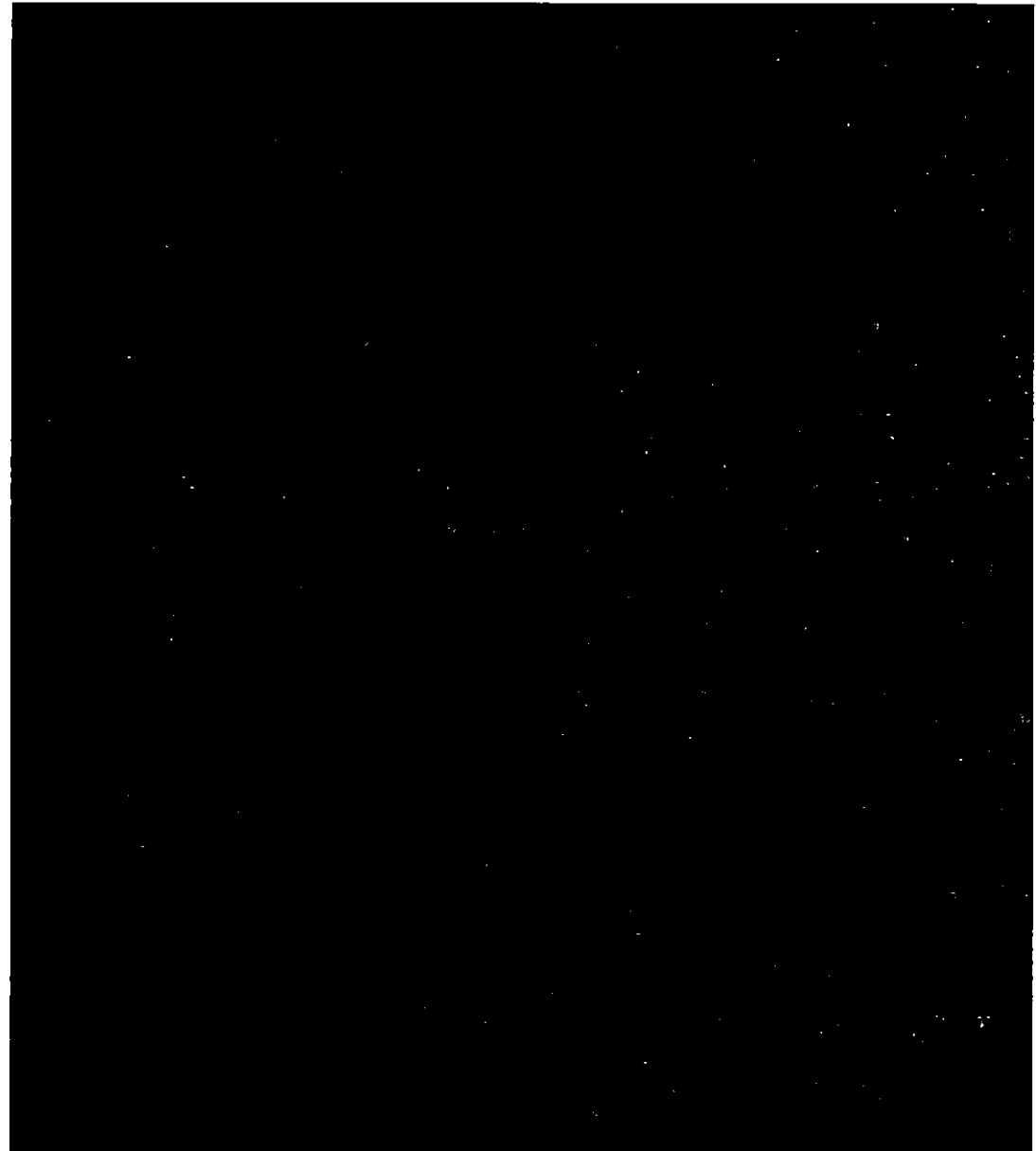
Pike County Light and Power Company

PPL Electric Utilities Corp. dba PPL Utilities (LSE)

UGI Utilities, Inc.

Wellsboro Electric Company

West Penn Power Company d/b/a Allegheny Power



REDACTED

Kris Woods

From: Holly P Wheller <hpwheller@aepes.com>
Sent: Friday, March 17, 2017 2:42 PM
To: Kris Woods
Cc: Ahmadou Bayo
Subject: PennAEPS Filing - Dec 2016 - Feb 2017
Attachments: 201612 - PennAEPS.PNG; 201701-PennAEPS.PNG; 201702-PennAEPS.PNG

Hi Kris,

Attached are the screenshots showing the volumes have been entered into PennAEPS for Dec-Feb 2017. Please let me know if you have any questions. Thanks.

Holly

REDACTED

Select the month and year for the load that you will be entering. If the EDC has already entered your load, it will be prefilled for you. You can accept that entry, or manually change it. When you've finished, press the "Submit data" button at the bottom of the page. The "Confirmed by EGS" column will switch to "Yes" for every accepted entry. You can continue to change your entries until they are locked.

Month: 12

Year: 2016

Search

EDC

Citizens Electric Company of Lewisburg, PA

Duquesne Light Company

Metropolitan Edison Company

PECO Energy Company

Pennsylvania Electric Company

Pennsylvania Power Company

Pike County Light and Power Company

PPL Electric Utilities Corp. dba PPL Utilities (LSE)

UGI Utilities, Inc

Wellsboro Electric Company

West Penn Power Company d/b/a Allegheny Power

RECEIVED

MAY 31 2018

PA PUBLIC UTILITY COMMISSION
SECRETARY'S BUREAU

REDACTED

Instructions:

Select the month and year for the load that you will be entering. If the EDC has already entered your load, it will be pre-filled for you. You can accept that entry, or manually change it. When you've finished, press the "Submit data" button at the bottom of the page. The "Confirmed by EGS" column will switch to "Yes" for every accepted entry. You can continue to change your entries until they are locked.

Month 1

Year 2017

Search

EDC

Citizens Electric Company of Lewisburg, PA

Duquesne Light Company

Metropolitan Edison Company

PECO Energy Company

Pennsylvania Electric Company

Pennsylvania Power Company

Pike County Light and Power Company

PPL Electric Utilities Corp dba PPL Utilities (LSE)

UGI Utilities, Inc

Wellsboro Electric Company

West Penn Power Company d/b/a Allegheny Power

REDACTED

Instructions:

Select the month and year for the load that you will be entering. If the EDC has already entered your load, it will be pre-filled for you. You can accept that entry, or manually change it. When you've finished, press the "Submit data" button at the bottom of the page. The "Confirmed by EGS" column will switch to "Yes" for every accepted entry. You can continue to change your entries until they are locked.

Month: *

Year: 2017 *

Search

EDC

Citizens Electric Company of Lewisburg, PA

Duquesne Light Company

Metropolitan Edison Company

PECO Energy Company

Pennsylvania Electric Company

Pennsylvania Power Company

Pike County Light and Power Company

PPL Electric Utilities Corp. dba PPL Utilities (LSE)

UGI Utilities, Inc

Wellsboro Electric Company

West Penn Power Company d/b/a Allegheny Power

VERIFICATION

I, F. Mitchell Dutton, Regulatory Counsel for AEP Energy, Inc., hereby state that the facts set forth above are true and correct to the best of my knowledge, information and belief, and that I expect to be able to prove the same at a hearing held in this matter. I understand that the statements herein are made subject to the penalties of 18 Pa. C.S. §4904 (relating to unsworn falsification to authorities).



F. Mitchell Dutton

SUBSCRIBED AND SWORN TO

before me this 31 day of May, 2018.





Kristina L. Woods, Notary Public

KRISTINA L. WOODS
Notary Public, State of Ohio
My Commission Expires 03-07-2021

Proof of Service on Interested Parties



An **AEP** Company

F. Mitchell Dutton
DIRECT LINE: (614) 682-4350
mdutton@aepenergy.com

May 31, 2018

Via Regular Mail Delivery

To All Interested Parties on Attached Service List

Re: AEP Energy, Inc.'s Annual Petition for Renewal of Bond Reduction

Dear Sir or Madam:

AEP Energy has submitted to Rosemary Chiavetta, Secretary, Pennsylvania Public Utility Commission its Annual Petition for the Renewal of its Bond Reduction for its required security to operate as a licensed electric generation supplier in Pennsylvania (License No. A-2009-2132755).

We are providing a copy of the redacted version of the above referenced petition and supporting documentation.

Please contact me if I can be of further assistance.

Respectfully,

A handwritten signature in black ink, appearing to read "F. Mitchell Dutton".

F. Mitchell Dutton
Regulatory Counsel

cc: Rosemary Chiavetta, Secretary, Pennsylvania Public Utility Commission

enclosures

RECEIVED

MAY 31 2018

PA PUBLIC UTILITY COMMISSION
SECRETARY'S BUREAU

SERVICE LIST

Bureau of Investigation and Enforcement Pennsylvania Public Utility Commission Commonwealth Keystone Building 400 North Street 2 nd Floor, F West Harrisburg, PA 17120	Pennsylvania Office of Consumer Advocate 555 Walnut Street 5 th Floor, Forum Place Harrisburg, PA 17101
Pennsylvania Office of Small Business Advocate 300 North Second Street Suite 202 Harrisburg, PA 17101	Department of Revenue Bureau of Compliance P.O. Box 280946 Harrisburg, PA 17128-0946
Pennsylvania Office of Attorney General Strawberry Square Harrisburg, PA 17120	Duquesne Light Company Regulatory Affairs 411 Seventh Street, MD 16-4 Pittsburgh, PA 15219
PPL Electric Utilities Legal Department Attn: Paul Russell 2 North Ninth Street Allentown, PA 18101	First Energy (Penn Power, Met-Ed and Penelec) Legal Department 2800 Pottsville Pike Reading, PA 19612
West Penn Power d/b/a Allegheny Power Legal Department 800 Cabin Hill Drive Greensburg, PA 15601	PECO Energy Company Manager, Energy Acquisition 2301 Market Street Philadelphia, PA 19101

RECEIVED

MAY 31 2018

PA PUBLIC UTILITY COMMISSION
SECRETARY'S BUREAU

UPS Internet Shipping: View/Print Label

1. **Ensure there are no other shipping or tracking labels attached to your package.** Select the Print button on the print dialog box that appears. Note: If your browser does not support this function select Print from the File menu to print the label.
2. **Fold the printed label at the solid line below.** Place the label in a UPS Shipping Pouch. If you do not have a pouch, affix the folded label using clear plastic shipping tape over the entire label.
3. **GETTING YOUR SHIPMENT TO UPS**
Customers with a Daily Pickup
 Your driver will pickup your shipment(s) as usual.

Customers without a Daily Pickup

Take your package to any location of The UPS Store®, UPS Access Point(TM) location, UPS Drop Box, UPS Customer Center, Staples® or Authorized Shipping Outlet near you. Items sent via UPS Return Services(SM) (including via Ground) are also accepted at Drop Boxes. To find the location nearest you, please visit the 'Find Locations' Quick link at ups.com. Schedule a same day or future day Pickup to have a UPS driver pickup all of your Internet Shipping packages. Hand the package to any UPS driver in your area.

UPS Access Point™
 THE UPS STORE
 2868 STELZER RD
 COLUMBUS ,OH 43219

UPS Access Point™
 THE UPS STORE
 947 E JOHNSTOWN RD
 GAHANNA ,OH 43230

UPS Access Point™
 JULIAN WIRELESS
 2562 MORSE RD
 COLUMBUS ,OH 43231

FOLD HERE

KRISTINA L. WOODS 614-682-4405 AEP ENERGY INC. 1 EASTON OVAL COLUMBUS OH 432196195		0.0 LBS LTR	1 OF 1
SHIP TO: ROSEMARY CHIAVETTA PA PUBLIC UTILITY COMMISSION 400 NORTH STREET COMMONWEALTH KEYSTONE BUILDING HARRISBURG PA 17120-0200			
	PA 171 9-20 		
UPS NEXT DAY AIR		1	
TRACKING #: 1Z 845 2V8 01 2292 3557			
			
BILLING: P/P			
UTS 20.0-42		WNINVS0 99.CA 04/2018	
			