

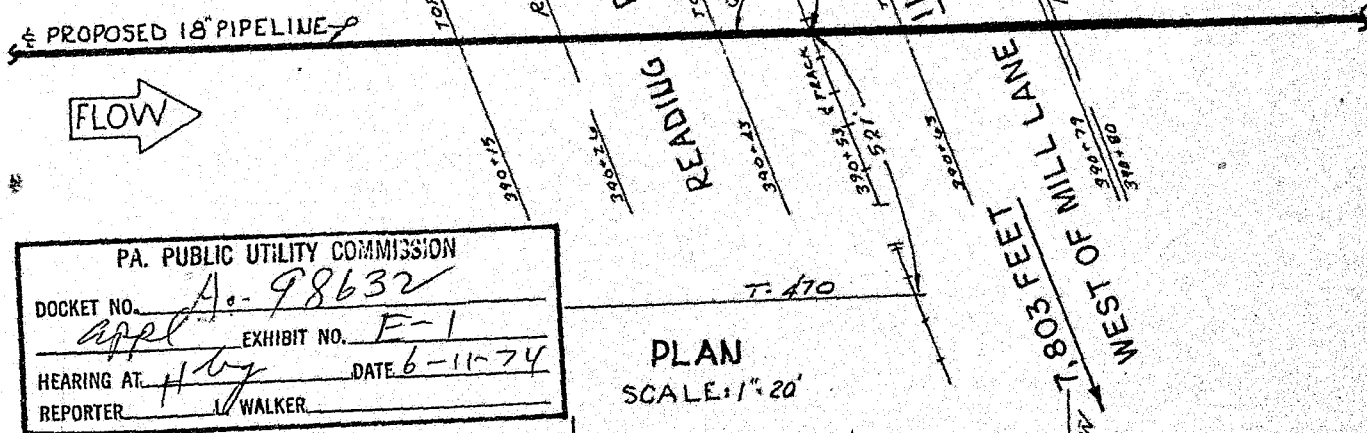
A-140200

F8

# EAST WHITELAND TWP, CHESTER CO. PA.

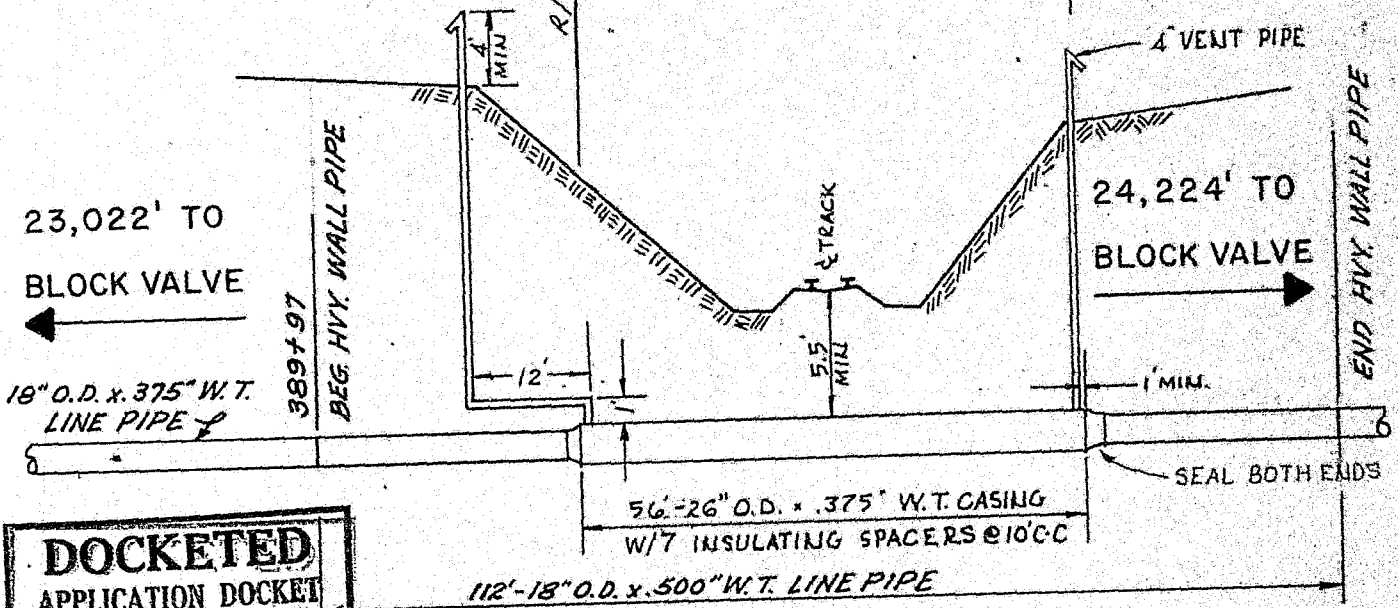


RECEIVED  
1974 JUL -1 AM 10:40  
SECRETARY'S OFFICE  
PUBLIC UTILITY  
COMMISSION



PA. PUBLIC UTILITY COMMISSION  
 DOCKET NO. Appl. A-98632  
 EXHIBIT NO. E-1  
 HEARING AT Hwy DATE 6-11-74  
 REPORTER WALKER

PLAN  
SCALE: 1" = 20'

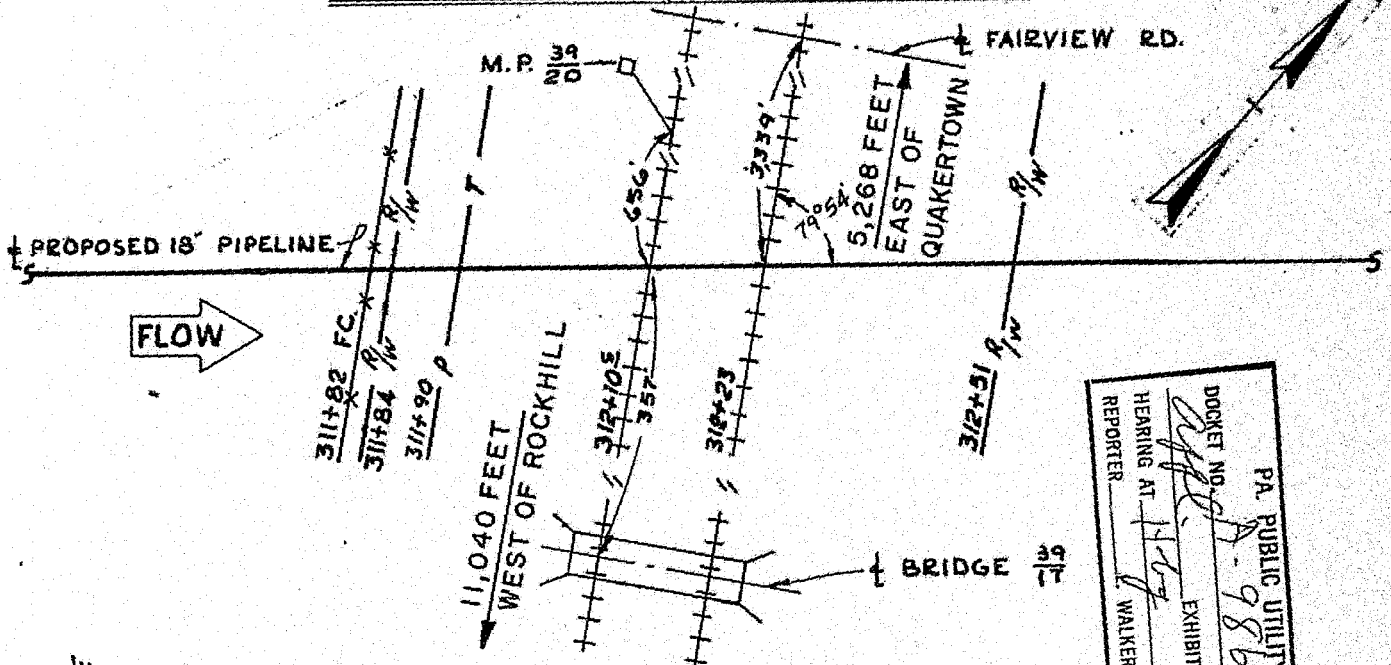


**DOCKETED**  
 APPLICATION DOCKET  
 JUL 2 - 1974  
 ENTRY No. [Signature]

INTERSTATE ENERGY COMPANY  
 WAYNE, PENNSYLVANIA  
 GULF INTERSTATE ENGINEERING CO.  
 PROPOSED PIPELINE CROSSING  
 READING RAILROAD CO.  
 EAST WHITELAND TWP, CHESTER CO, PA.  
 DATE 8-7-72 SCALE As Shown  
 DRAWN BY RES APPROVED  
 CHECKED BY JEE BOOK NO. 227 p 23  
 APPROVED JEE IEC-A9-9-55R

RECORD FOLDER  
 PROFILE SCALE: HOR. 1" = 20' VER. 1" = 10'  
 Appl E-1  
 "EXHIBIT 1"

# RICHLAND TWP., BUCKS CO., PA.



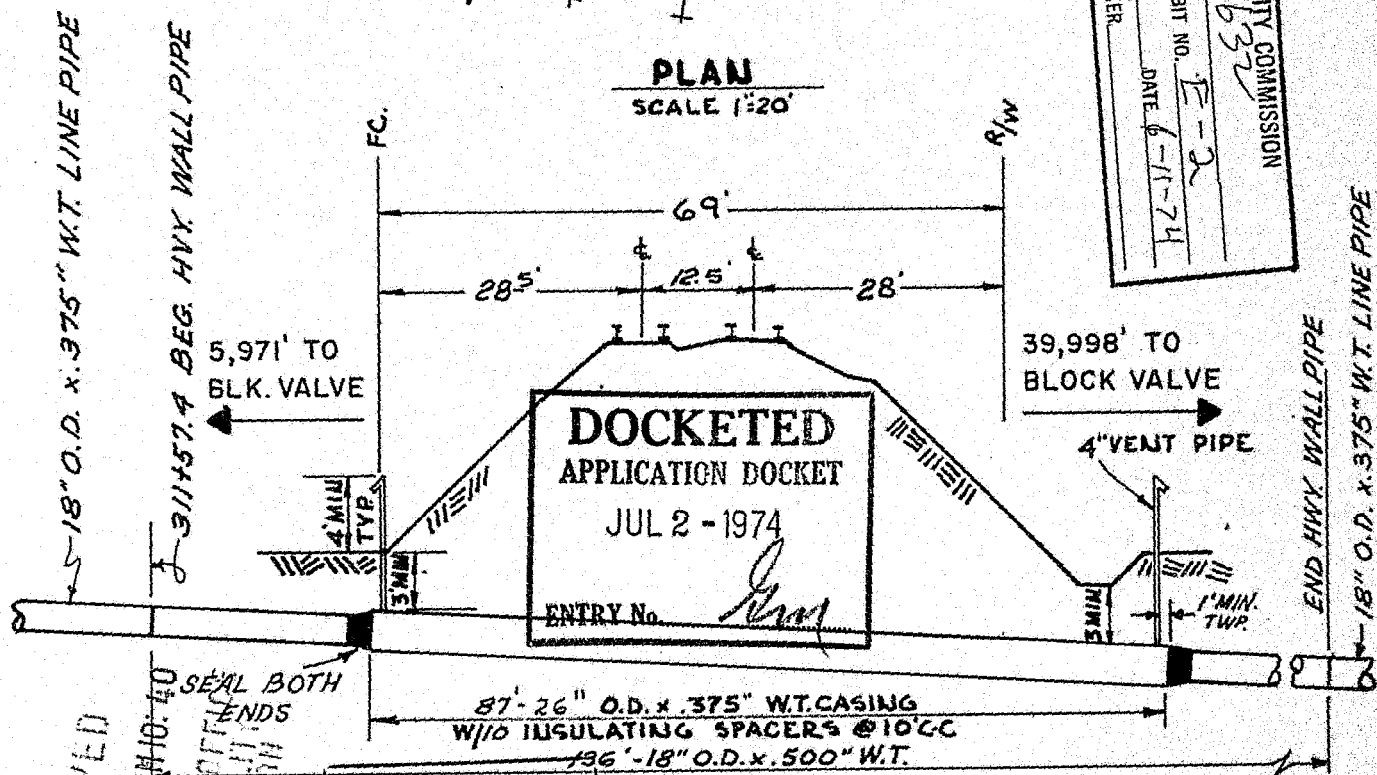
PA. PUBLIC UTILITY COMMISSION

DOCKET NO. A-98632

HEARING AT WALKER EXHIBIT NO. E-2

REPORTER Walker DATE 6-11-74

**PLAN**  
SCALE 1"=20'



**DOCKETED**  
**APPLICATION DOCKET**  
JUL 2 - 1974  
ENTRY No. [Signature]

**RECORD FOLDER**

**PROFILE**  
SCALE: HOR. 1"=20', VER 1"=10'

"EXHIBIT 2"

A. 98632

RECEIVED  
 1974 JUL -1 AM 10:40  
 SECRETARY'S OFFICE  
 PUBLIC UTILITY COMMISSION

NOTE: T.B.M. RR SPIKE IN -T-POLE 38' RT. STA. 311+90; 100' EST  
 REV. 4-1-74

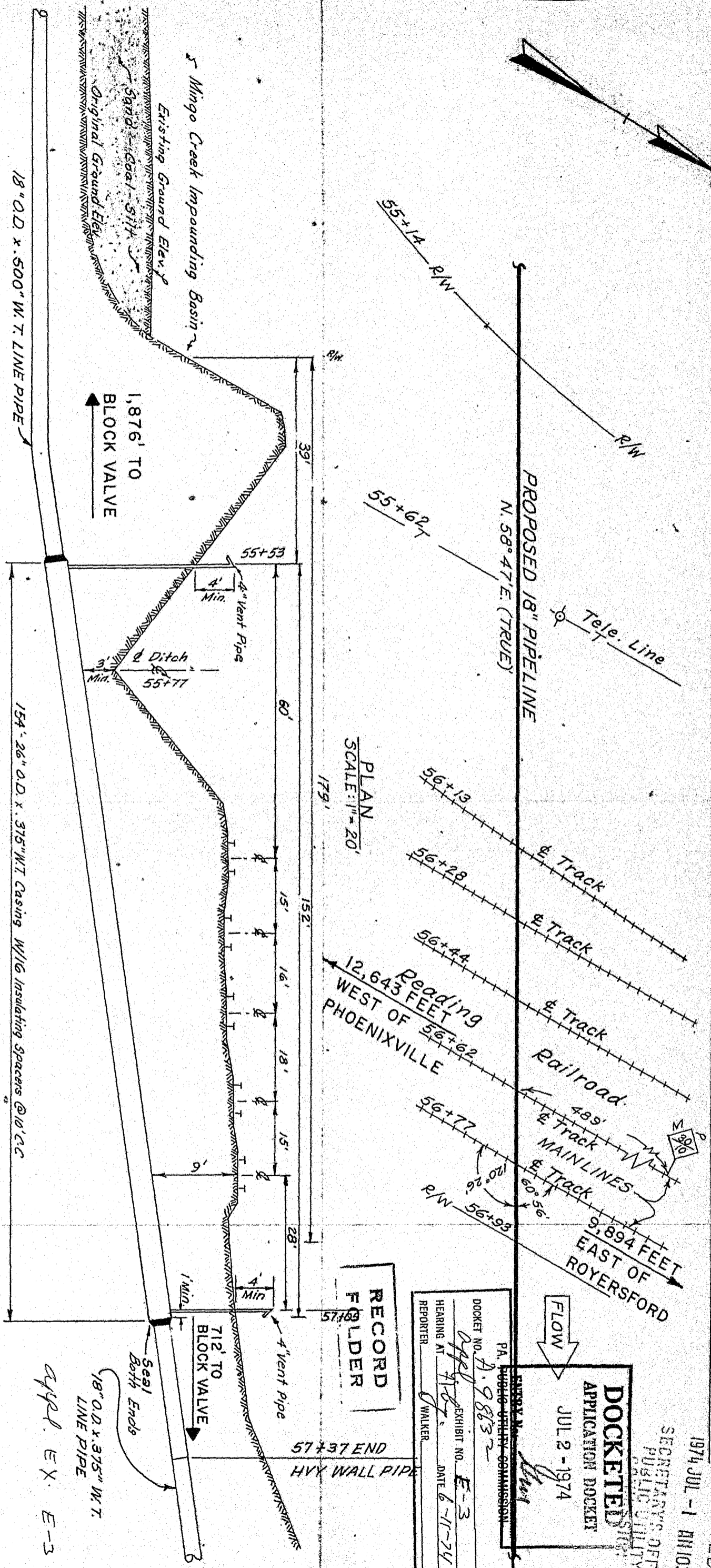
|   |                    |
|---|--------------------|
| INTERSTATE ENERGY COMPANY<br>WAYNE, PENNSYLVANIA                                    |                    |
| GULF INTERSTATE ENGINEERING CO.   |                    |
| PROPOSED PIPELINE CROSSING<br>READING RAILROAD CO.<br>RICHLAND TWP., BUCKS CO., PA. |                    |
| DATE 28 FEB 73  | SCALE AS SHOWN     |
| DRAWN BY P.E.S.   | APPROVED           |
| CHECKED BY JEE  | BOOK NO. 244 PG 12 |
| APPROVED JEE  | IEC-A9-23-42R      |

1974 JUL -1 AM 10:41  
SECRETARY'S OFFICE  
PUBLIC UTILITY  
REGISTRY

**DOCKETED**  
APPLICATION DOCKET  
JUL 2 - 1974

PA. PUBLIC UTILITY COMMISSION  
DOCKET NO. P. 9813-2  
EXHIBIT NO. E-3  
HEARING AT 7/18/74 DATE 6-11-74  
REPORTER WALKER

RECORD FOLDER



PLAN  
SCALE: 1" = 20'

**NOTE:**

T.B.M. RR Spike in Pole 608'44' & Sta. 55+62 Elev 112.15'  
T.B.M. SW Cor. Con. Drain 30'47' & Sta. 56+98 Elev 115.03'

**PROFILE**

SCALE: HOR. 1" = 20'  
VER. 1" = 10'

**REVISIONS**

| NO. | DATE    | BY     |
|-----|---------|--------|
| 1   | 3-11-74 | J.F.M. |
| 2   | 4-1-74  | J.F.M. |
| 3   | 4-26-74 | HBA    |
| 4   |         |        |
| 5   |         |        |

Interstate Energy Company  
Wayne, Pa.

Proposed Pipeline Crossing  
The Reading Railroad

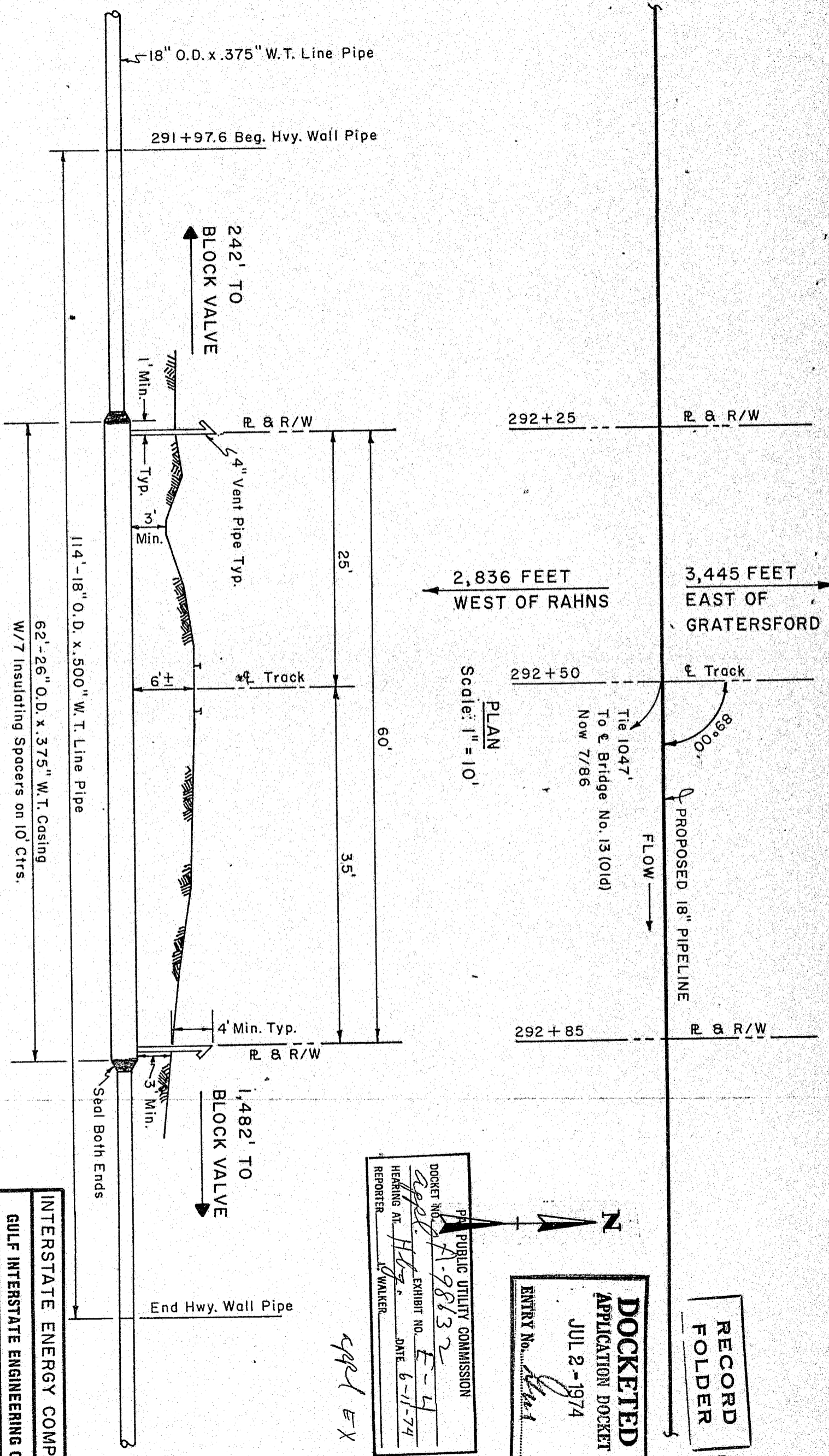
| MATERIAL                 | SCALE    | DATE         |
|--------------------------|----------|--------------|
| Bk 259 Pg 29, 269 Pg 3   | AS Shown | JUN 18, 1974 |
| DRAWING NO. IEC-B9-13-1R |          |              |

"EXHIBIT 3"

APPL. EX. E-3  
18" O.D. x .375" W.T. LINE PIPE  
Seal Both Ends

PERKIOMEN TWP. MONTGOMERY CO., PA.

NOTE: T.B.M. Square Chisel Mark Top of Culvert  
 16' Lt. of Sta. 291 + 47 (Tie 1047' to E Bridge).



114'-18" O.D. x .500" W.T. Line Pipe  
 62'-26" O.D. x .375" W.T. Casing  
 W/7 Insulating Spacers on 10' Ctrs.  
**PROFILE**  
 Scale: Horiz. 1" = 10'  
 Vert. 1" = 10'

2,836 FEET WEST OF RAHNS  
 3,445 FEET EAST OF GRATERSFORD  
 292+25 R & R/W  
 292+50 E Track  
 292+85 R & R/W  
 89° 00'  
 Tie 1047'  
 To E Bridge No. 13 (Old)  
 Now 7/86  
 PROPOSED 18" PIPELINE  
 FLOW →  
**PLAN**  
 Scale: 1" = 10'

RECORD  
 FOLDER

**DOCKETED**  
 APPLICATION DOCKET  
 JUL 2 - 1974  
 ENTRY No. *1047*

PA PUBLIC UTILITY COMMISSION  
 DOCKET NO. *A-98632*  
 EXHIBIT NO. *E-4*  
 HEARING AT *Htg.* DATE *6-11-74*  
 REPORTER *WALKER*

*APP'D EX E-4*

"EXHIBIT 4"

|   |                     |
|---|---------------------|
| INTERSTATE ENERGY COMPANY   |                     |
| GULF INTERSTATE ENGINEERING CO.   |                     |
| PROPOSED PIPELINE CROSSING<br>READING RAILROAD<br>PERKIOMEN TWP.<br>MONTGOMERY CO., PA. |                     |
| DATE 3-11-74  | SCALE As Shown      |
| DRAWN BY J.F.M.   | APPROVED            |
| CHECKED BY  | BOOK NO. 243, Pg. 6 |
| APPROVED  | IEC-B9-15-4R        |

4-1-74