



COMMONWEALTH OF PENNSYLVANIA
PENNSYLVANIA PUBLIC UTILITY COMMISSION
P. O. BOX 3265, HARRISBURG, Pa. 17120

August 25, 1983

IN REPLY PLEASE
REFER TO OUR FILE

C-80041953

Mr. Gregory Ferrese, Manager
Borough of Ellwood City
525 Lawrence Avenue
Ellwood City, PA 16117

RECEIVED

AUG 29 1983

SECRETARY'S OFFICE
Public Utility Commission

Ralph B. Pratt, State Representative

v.

The Baltimore and Ohio Railroad Company, Department of Transportation of the Commonwealth of Pennsylvania, Borough of Ellwood City, Lawrence County, Pennsylvania Power Company, Western Pennsylvania Water Company, Columbia Gas of Pennsylvania, Inc., The Bell Telephone Company of Pennsylvania and the Pittsburgh & Lake Erie Railroad Company.

Dear Mr. Ferrese:

By order entered May 13, 1983, this Commission granted the borough an extension of time of 90 days, to complete plans to repair, strengthen or replace the curbs, sidewalks and sidewalk railings on the approaches to the Second Street overpass structure.

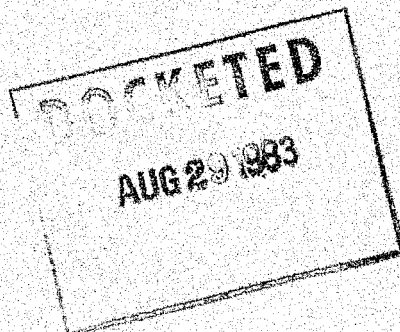
More than ninety (90) days have passed since the order was entered and the plans have not been received. Please inform the undersigned if the plans will be submitted in the near future or when they will be submitted.

If a reply is not received promptly, this matter will be turned over to the Commission legal staff for enforcement of the Commission's order.

Very truly yours,

R. A. Peteritas, P.E., Director
Bureau of Rail Transportation

DRF:11r



C-80041953

BOROUGH OF ELLWOOD CITY
525 LAWRENCE AVENUE
ELLWOOD CITY, PENNSYLVANIA 16117

BUREAU OF
SEP 7 1983
RAIL
TRANSPORTATION

LAWRENCE COUNTY
PHONE (412) 758-5576

MARY ANN FLEO
BOROUGH SECRETARY

September 2, 1983

RECEIVED

SEP 12 1983

SECRETARY'S OFFICE
Public Utility Commission

R. A. Peteritas, Director
Bureau of Rail Transportation
Pennsylvania Public Utility Commission
P. O. Box 3265
Harrisburg, Pennsylvania 17120

Dear Mr. Peteritas:

Re: Curbs, Rails and Walks
Second Street Bridge
Ellwood City Borough

We regret the delay in forwarding the enclosed plans for repair to the curbs, rails and walks on the approaches to Second Street bridge. The Borough proposes to provide budget allocations for the work for next year.

Sincerely,

BOROUGH OF ELLWOOD CITY

F. J. Strange
F. J. Strange
Borough Manager

FJS/ljb

cc W. F. Hummel
File
1984 Budget File

RECEIVED

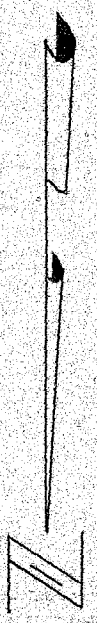
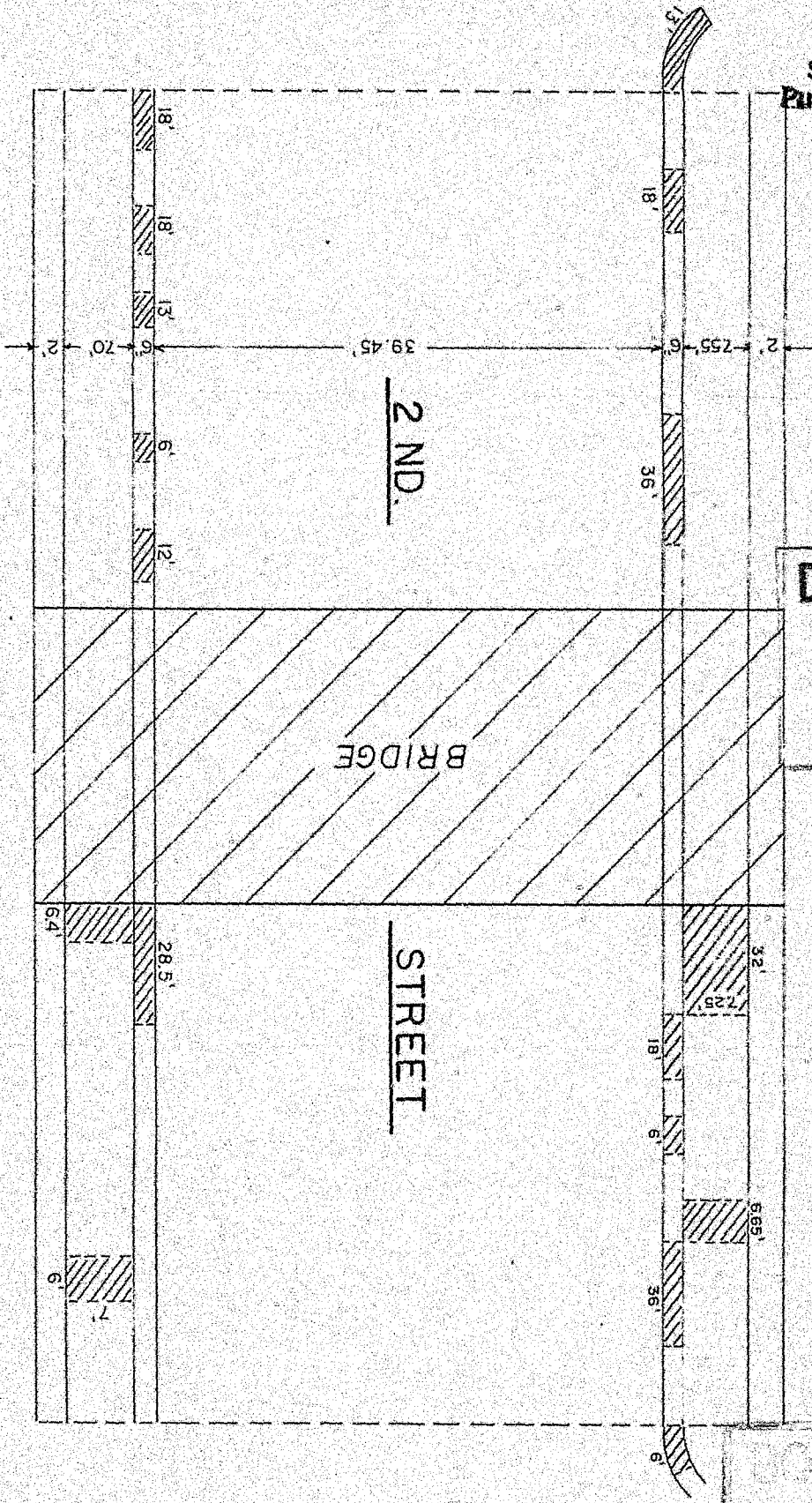
SEP 12 1983

SECRETARY'S OFFICE
Public Utility Commission

DOCKETED

SEP 12 1983

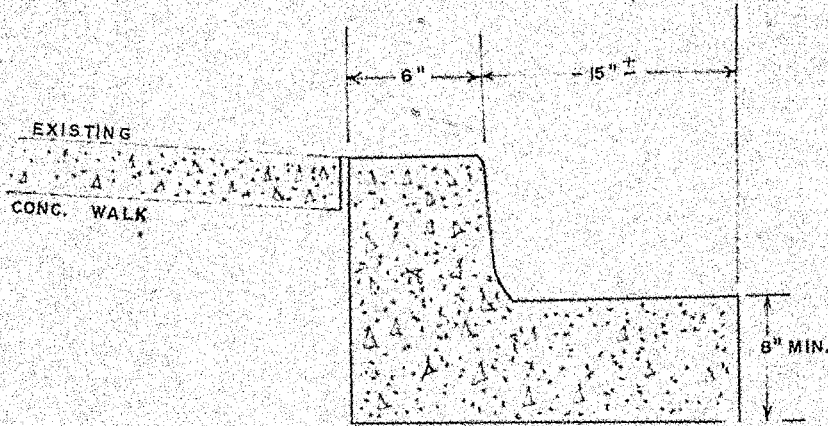
SKETCH OF 2ND STREET BRIDGE APPROACHES



RECEIVED

SEP 12 1983

SECRETARY'S OFFICE
Public Utility Commission



TYPICAL CURB & GUTTER SECTION

(NOT TO SCALE)

CURB & GUTTER SECTION SHALL MATCH EXISTING CURBS

CONCRETE SHALL HAVE A 28 DAY COMPRESSIVE STRENGTH
OF 3300 P.S.I.

DOCUMENT
FOLDER

LOCKETED
SEP 12 1983

WILLIAM F. HUMMEL

Registered Professional Engineer and Surveyor

11-80041953
ORIGINAL

Box 655, Mercer Road

November 10, 1983

R. D. No. 3, Beaver Falls, Pa. — 15010

Phone: 843-4598

Mr. Flesher
Bureau Of Rail Transportation
Pennsylvania Public Utility Commission
P.O. Box 3265
Harrisburg, PA. 17120

Dear Mr. Flesher:

RE: Curbs, Rails, & Walks
Second Street Bridge
Ellwood City Borough

Enclosed are revised drawings showing location of sidewalk and curb repairs and typical sections through the walk and curb and gutter. This is per our phone conversation on this project.

If you have any further questions please call.

Yours Truly,

William F. Hummel
William F. Hummel
Ellwood City Borough Engineer

DOCUMENT
FOLDER

cc: F.J. Strange

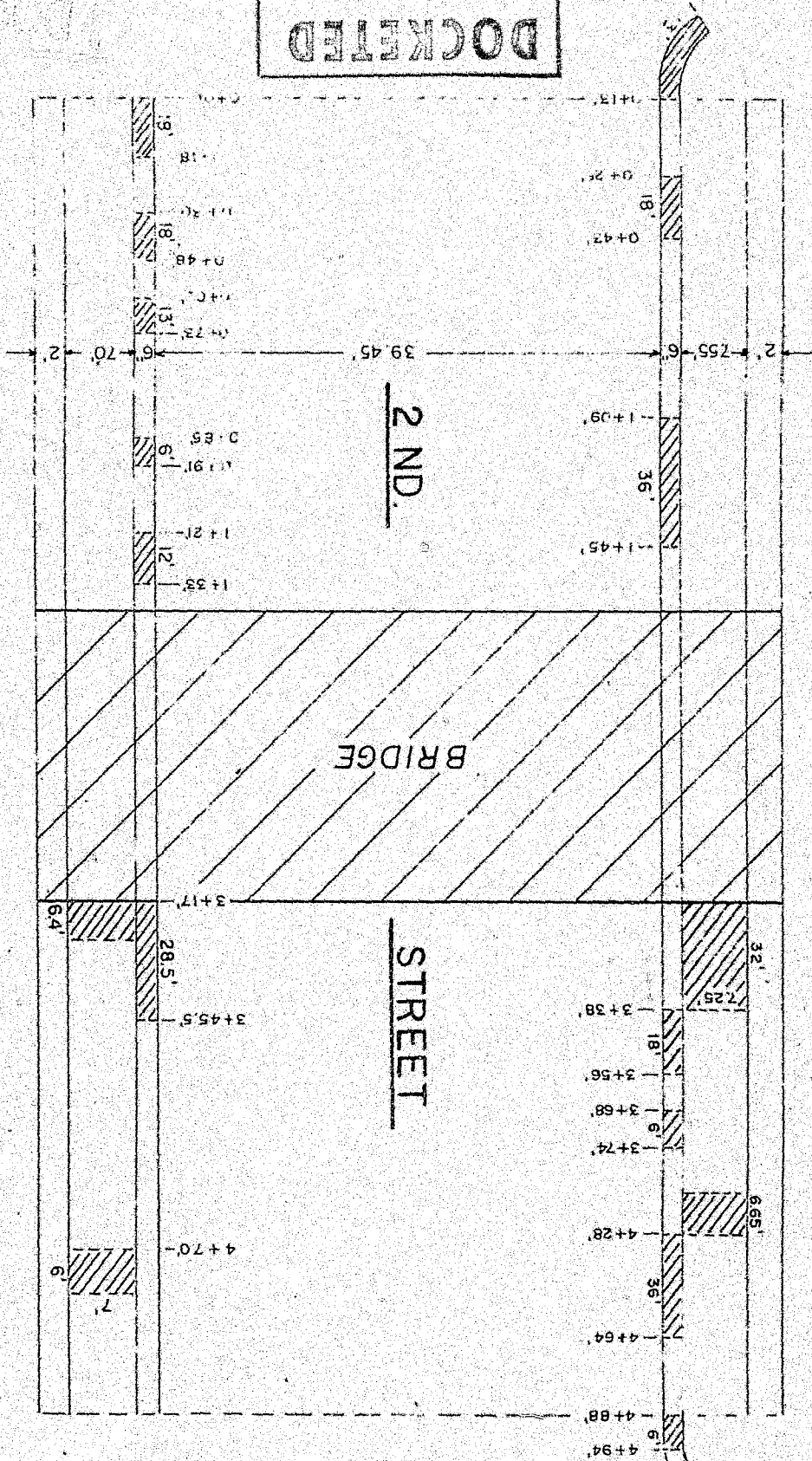
BUREAU OF
NOV 21 1983
RAIL
TRANSPORTATION

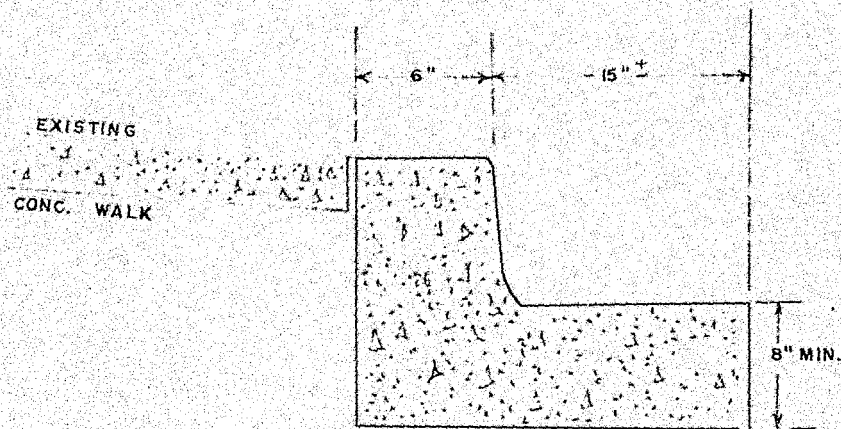
RECEIVED

NOV 28 1983
SECRETARY'S OFFICE
Public Utility Commission

DOCKETED
NOV 23 1983

SKETCH OF 2ND STREET BRIDGE APPROACHES





TYPICAL CURB & GUTTER SECTION

(NOT TO SCALE)

CURB & GUTTER SECTION SHALL MATCH EXISTING CURBS

CONCRETE SHALL HAVE A 28 DAY COMPRESSIVE STRENGTH
OF 3300 P.S.I.

TYPICAL SIDEWALK SECTION

(NOT TO SCALE)

