

**Application of Pennsylvania-American Water Company for Acquisition of  
the Wastewater Assets of the Borough of Kane Authority  
66 Pa. C.S. § 1329  
Application Filing Checklist – Water/Wastewater  
Docket No. A-2019-3014248**

15. Plant in Service:
- a. Provide an inventory of the used and useful plant assets to be transferred. Identify separately any utility plant that is held for future use.<sup>3</sup>

**RESPONSE:**

- a. See the Engineer’s Assessment attached as **Appendix A-15-a** that identifies assets to be transferred as required by 66 Pa. C.S. § 1329(a)(4).

---

<sup>3</sup> The inventory is to be developed from available records, maps, work orders, debt issue closing documents funding construction projects, and other sources to ensure an accurate listing of utility plant by utility account.

**Kane Borough Authority**  
**McKean County, Pennsylvania**

**WASTEWATER SYSTEM**  
**ORIGINAL COST OF INVENTORY/ASSETS**

**September 19, 2019**



**Pittsburgh, Pennsylvania**



# Table of Contents

## **Contents**

Executive Summary .....	1
Methodology .....	2
Appendix A – Original Cost of Inventory/Assets	
Appendix B – Borough of Kane Sewer Map	
Appendix C – Wetmore Sewer Contract Index Maps	
Appendix D – Pine Street WWTP Site Plan	
Appendix E – Kinzua Road WWTP Site Plan	

## **Executive Summary**

Kane Borough Authority authorized Gannett Fleming, Inc. on January 15, 2018 to prepare an Act 12 Engineers Assessment Study for sale of the Wastewater System Assets to the Pennsylvania American Water Company (PAWC). Pennsylvania Act 12 of 2016, amended Chapter 13 of the Pennsylvania Public Utility Code and the Final Implementation Order entered by the Public Utility Commission at Docket No. M-2016- 2543193 (collectively, "Act 12") by adding section §1329 Valuation of acquired water and wastewater systems.

The Kane Wastewater System covered by this Study consists of gravity separate and combined sewers within Kane Borough, gravity separate sewers and low pressure sewers in contiguous Wetmore Township, eight (8) collection system lift stations (West Wind, Pond Street, Jo Jo Road Grinder Pump, Route 321 South, Route 6, Route 66, West Kane and Willow Run) and two (2) wastewater treatment plants (Pine Street and Kinzua Road).

A complete list of assets showing original installation date and cost as of July 2019 is included in Appendix A. The Grand Total as shown on the summary of assets organized by NARUC account number = \$21,023,527.36 .

The summary of assets organized by NARUC account number in Appendix A also shows a list of excluded assets = \$215,647.06. This report lists only those excluded assets identified herein. The buyer and seller are obligated to identify and complete Schedule 1.3 - Excluded Assets contained in the Asset Purchase Agreement.

Maps of the Boro and Township sewer service areas are contained in Appendices B and C, respectively. Site plans of the Pine Street and Kinzua Road WWTPs are contained in Appendices D and E, respectively.

## **Methodology**

The Engineer met with representatives of the Borough of Kane and Kane Borough Authority to obtain records, tour the WWTPs and verify assets as listed on book depreciation schedules provided by Kane. The Engineer also addressed buyer and seller comments in this Revision 1.

A list of inventory/assets was developed of the used and useful utility plant assets (including land and land rights) and any utility plant held for future use that is part of the System Assets. The assets were assigned an account number that conforms to the National Association of Regulatory Utility Commissioners (NARUC) System of Accounts for water and wastewater systems. The List of Inventory/Assets for the Kane Authority is shown in Appendix A.

The development of the inventory/assets began with the Book Depreciation Summary provided by the Borough of Kane Authority and the Book Depreciation Summary provided by the Borough of Kane. The Book Depreciation Summary for each entity provided a list of assets, the date of installation, and the cost of each item. Each item was reviewed and assigned NARUC account numbers.

To provide a list of assets for the Initial 1967 Project, the lineal footage of sewers and service sewers was measured and manholes were counted off the Borough of Kane Sewer Map (Appendix B). The sewer mains and service sewers data was tabulated based on pipe diameter. Unit costs were obtained from similar projects that were constructed in 1966 and 1976. The unit costs for the line items were adjusted with the ENR index.

To confirm and/or update costs, the RDA/FmHA requisitions for the 1996 Sewer System Capital Improvements Project were obtained from the Borough of Kane Authority and the final estimates for Pine Street and Kinzua Wastewater Treatment Plants, Kinzua Interceptor Sewer and Vacuum Truck contracts were located and tabulated in individual tables to further breakdown the assets and assign NARUC account numbers. These tables were then consolidated into Appendix A.

The RDA/FmHA requisitions were also used for the final estimates for the Pump Stations, West Kane Sewer, Rt 66 Sewer, West Wind Sewer, East Kane Sewer, Greendale Sewer and Northwest Sewer contracts and Grinder Pumps. These contracts were for the construction of sewers in Wetmore Township as shown on the contract plan index maps located in Appendix C.

Contract No. 2003-2, General/Mechanical Construction and Contract No. 2003-3, Electrical Construction of the Northwest Development Project – Sanitary Sewers, Pump Station, Force Main and Access Road Bid forms were located for a portion of the Northwest Project (Zook Area) and this information was tabulated and assigned NARUC account numbers. The road paving project cost was based on information provided by McKean County Redevelopment Authority. The Allegheny Power cost and other costs were based on accounting records of the Kane Borough Authority. It should be noted that the costs based on the bid form were also adjusted based on accounting records of the Kane Borough Authority.

Based on the 1994 site plans showing the original 1967 plant projects, there were seven (7) facilities constructed at the Pine Street WWTP and Kinzua Road WWTP. The two WWTPs are essentially identical with regard to facilities and capacities. Certain and same facilities at each WWTP were demolished with the 1996 project with some facilities remaining in service.

The following original 1967 facilities were demolished at each WWTP with the 1996 upgrades:

- Screening/Grit removal facility
- Primary Settling Tanks
- Sprinkling (trickling) filter

The following original 1967 facilities remain and some were repurposed at each WWTP with the 1996 upgrades:

- Control building (remain)
- Digester tanks (repurposed to WAS Holding Tanks)
- Secondary Settling Tanks (repurposed to Chlorine Contact Tanks)
- Chlorine Contact Tanks (repurposed to Effluent/Utility Water Tanks)

Site Plans for Pine Street and Kinzua Road WWTPs are included as Appendices D and E. The Pine Street WWTP site plan is annotated to show which facilities were demolished and which facilities remain or were repurposed. It is the Engineer's opinion that the seven original facilities were of comparable size and original value. It follows then that the value of the remaining facilities, in terms of 1967 dollars, would be equal to four sevenths' (4/7) of the original value, or approximately 57%. The remaining value of the Pine Street and Kinzua Road WWTPs is then  $\$203,723 \times 4/7 = \$116,413$ . These values are shown at items 805 and 806 of Appendix A.

Excluded assets are shown at the end of Appendix A and include grinder pumps, service laterals from curb to house and a loader (to be retained by the Boro/Authority). Grinder pumps were provided by Kane to the customer. It is recommended the buyer and seller agree on the disposition of the grinder pumps.

The Engineer will respond to RFIs on this Study from the buyers and seller's consultants.

END OF REPORT

# APPENDIX A

**APPENDIX A - WASTEWATER SYSTEM  
ORIGINAL COST OF INVENTORY/ASSETS**

**ORGANIZED BY ACCOUNT NUMBER**

ITEM #	ACCOUNT	PROPERTY DESCRIPTION	CONTRACT NUMBER	YEAR	UNIT COST	ACCOUNT COST	COMMENTS
<b>353 - Land and Land Rights</b>							
1	353	Land & ROW		1996	\$34,237.24		
<b>SUB-TOTAL =</b>						<b>\$34,237.24</b>	

<b>354 - Structures and Improvements</b>							
2	354	Various	Borough of Kane Original Cost of Inventory/Assets	1993	\$9,799.64		
3	354	Door	Borough of Kane Original Cost of Inventory/Assets	2003	\$1,222.75		
4	354	3 yard rear load dumpster	Borough of Kane Original Cost of Inventory/Assets	2008	\$1,030.00		
5	354	Reznor Heater	Borough of Kane Original Cost of Inventory/Assets	2009	\$1,409.00		
6	354	Contract Bonds	Contract 1-92 - Pine Street WWTP (General/Mechanical)	1995-96	\$52,670.00		
7	354	Mobilization	Contract 1-92 - Pine Street WWTP (General/Mechanical)	1995-96	\$205,862.00		
8	354	Soil and Erosion Control	Contract 1-92 - Pine Street WWTP (General/Mechanical)	1995-96	\$7,064.00		
9	354	Relocation of Exist Pipe	Contract 1-92 - Pine Street WWTP (General/Mechanical)	1995-96	\$20,248.00		
10	354	Excavation (SBR)	Contract 1-92 - Pine Street WWTP (General/Mechanical)	1995-96	\$112,749.00		
11	354	Backfill (SBR)	Contract 1-92 - Pine Street WWTP (General/Mechanical)	1995-96	\$12,590.00		
12	354	Stone Base (SBR)	Contract 1-92 - Pine Street WWTP (General/Mechanical)	1995-96	\$5,320.00		
13	354	Concrete (SBR)	Contract 1-92 - Pine Street WWTP (General/Mechanical)	1995-96	\$369,702.00		
14	354	Reinforcing (SBR)	Contract 1-92 - Pine Street WWTP (General/Mechanical)	1995-96	\$172,312.00		

**APPENDIX A - WASTEWATER SYSTEM  
ORIGINAL COST OF INVENTORY/ASSETS**

**ORGANIZED BY ACCOUNT NUMBER**

ITEM #	ACCOUNT	PROPERTY DESCRIPTION	CONTRACT NUMBER	YEAR	UNIT COST	ACCOUNT COST	COMMENTS
15	354	Handrail (SBR)	Contract 1-92 - Pine Street WWTP (General/Mechanical)	1995-96	\$33,927.00		
16	354	Nosings (SBR)	Contract 1-92 - Pine Street WWTP (General/Mechanical)	1995-96	\$1,287.00		
17	354	Excavation (W.A.S. Pump Station)	Contract 1-92 - Pine Street WWTP (General/Mechanical)	1995-96	\$31,500.00		
18	354	Backfill (W.A.S. Pump Station)	Contract 1-92 - Pine Street WWTP (General/Mechanical)	1995-96	\$1,475.00		
19	354	Concrete (W.A.S. Pump Station)	Contract 1-92 - Pine Street WWTP (General/Mechanical)	1995-96	\$34,510.00		
20	354	Reinforcing (W.A.S. Pump Station)	Contract 1-92 - Pine Street WWTP (General/Mechanical)	1995-96	\$15,470.00		
21	354	Handrail (W.A.S. Pump Station)	Contract 1-92 - Pine Street WWTP (General/Mechanical)	1995-96	\$2,064.00		
22	354	Nosings (W.A.S. Pump Station)	Contract 1-92 - Pine Street WWTP (General/Mechanical)	1995-96	\$1,036.00		
23	354	Lintels, A.B.s (W.A.S. Pump Station)	Contract 1-92 - Pine Street WWTP (General/Mechanical)	1995-96	\$245.00		
24	354	Masonry (W.A.S. Pump Station)	Contract 1-92 - Pine Street WWTP (General/Mechanical)	1995-96	\$2,250.00		
25	354	Roof System (Trusses, shingles, plywood, etc.) (W.A.S. Pump Station)	Contract 1-92 - Pine Street WWTP (General/Mechanical)	1995-96	\$3,690.00		
26	354	Hatches (W.A.S. Pump Station)	Contract 1-92 - Pine Street WWTP (General/Mechanical)	1995-96	\$3,272.00		
27	354	Insulation (W.A.S. Pump Station)	Contract 1-92 - Pine Street WWTP (General/Mechanical)	1995-96	\$2,880.00		
28	354	Door, Frame, Hardware (W.A.S. Pump Station)	Contract 1-92 - Pine Street WWTP (General/Mechanical)	1995-96	\$1,245.00		
29	354	Fiberglass Specialties (portable safety rail) (W.A.S. Pump Station)	Contract 1-92 - Pine Street WWTP (General/Mechanical)	1995-96	\$1,000.00		
30	354	Excavation (Preliminary Treatment Struct.)	Contract 1-92 - Pine Street WWTP (General/Mechanical)	1995-96	\$2,632.00		

**APPENDIX A - WASTEWATER SYSTEM  
ORIGINAL COST OF INVENTORY/ASSETS**

**ORGANIZED BY ACCOUNT NUMBER**

ITEM #	ACCOUNT	PROPERTY DESCRIPTION	CONTRACT NUMBER	YEAR	UNIT COST	ACCOUNT COST	COMMENTS
31	354	Backfill (Preliminary Treatment Struct.)	Contract 1-92 - Pine Street WWTP (General/Mechanical)	1995-96	\$460.00		
32	354	Concrete (Preliminary Treatment Struct.)	Contract 1-92 - Pine Street WWTP (General/Mechanical)	1995-96	\$77,088.00		
33	354	Reinforcing (Preliminary Treatment Struct.)	Contract 1-92 - Pine Street WWTP (General/Mechanical)	1995-96	\$25,942.00		
34	354	Masonry (Preliminary Treatment Struct.)	Contract 1-92 - Pine Street WWTP (General/Mechanical)	1995-96	\$23,859.75		
35	354	Handrail (Preliminary Treatment Struct.)	Contract 1-92 - Pine Street WWTP (General/Mechanical)	1995-96	\$3,888.00		
36	354	Nosings (Preliminary Treatment Struct.)	Contract 1-92 - Pine Street WWTP (General/Mechanical)	1995-96	\$1,147.50		
37	354	Lintels, A.B.s (Preliminary Treatment Struct.)	Contract 1-92 - Pine Street WWTP (General/Mechanical)	1995-96	\$2,079.00		
38	354	Cast-in-Place (Preliminary Treatment Struct.)	Contract 1-92 - Pine Street WWTP (General/Mechanical)	1995-96	\$1,460.00		
39	354	Bar Screen - Coarse (Preliminary Treatment Struct.)	Contract 1-92 - Pine Street WWTP (General/Mechanical)	1995-96	\$883.00		
40	354	Bar Screen - Fine (Preliminary Treatment Struct.)	Contract 1-92 - Pine Street WWTP (General/Mechanical)	1995-96	\$976.00		
41	354	Precast Plank (Preliminary Treatment Struct.)	Contract 1-92 - Pine Street WWTP (General/Mechanical)	1995-96	\$2,688.00		
42	354	Roof System (Trusses, shingles, plywood, etc.) (Preliminary Treatment Struct.)	Contract 1-92 - Pine Street WWTP (General/Mechanical)	1995-96	\$46,944.00		
43	354	Door, Frame, Hardware (Preliminary Treatment Struct.)	Contract 1-92 - Pine Street WWTP (General/Mechanical)	1995-96	\$4,980.00		
44	354	Overhead Door (Preliminary Treatment Struct.)	Contract 1-92 - Pine Street WWTP (General/Mechanical)	1995-96	\$5,100.00		
45	354	Aluminum Windows (Preliminary Treatment Struct.)	Contract 1-92 - Pine Street WWTP (General/Mechanical)	1995-96	\$7,980.00		
46	354	Grating/Supports (Preliminary Treatment Struct.)	Contract 1-92 - Pine Street WWTP (General/Mechanical)	1995-96	\$15,640.00		

**APPENDIX A - WASTEWATER SYSTEM  
ORIGINAL COST OF INVENTORY/ASSETS**

**ORGANIZED BY ACCOUNT NUMBER**

ITEM #	ACCOUNT	PROPERTY DESCRIPTION	CONTRACT NUMBER	YEAR	UNIT COST	ACCOUNT COST	COMMENTS
47	354	Embedding Angle (Preliminary Treatment Struct.)	Contract 1-92 - Pine Street WWTP (General/Mechanical)	1995-96	\$2,660.00		
48	354	Excavation (Blower Building)	Contract 1-92 - Pine Street WWTP (General/Mechanical)	1995-96	\$1,043.00		
49	354	Backfill (Blower Building)	Contract 1-92 - Pine Street WWTP (General/Mechanical)	1995-96	\$230.00		
50	354	Concrete (Blower Building)	Contract 1-92 - Pine Street WWTP (General/Mechanical)	1995-96	\$9,266.00		
51	354	Reinforcing (Blower Building)	Contract 1-92 - Pine Street WWTP (General/Mechanical)	1995-96	\$1,666.00		
52	354	Masonry (Blower Building)	Contract 1-92 - Pine Street WWTP (General/Mechanical)	1995-96	\$20,662.50		
53	354	Misc. Metals (Lintels, A.B.s) (Blower Building)	Contract 1-92 - Pine Street WWTP (General/Mechanical)	1995-96	\$1,031.25		
54	354	Roof System (Trusses, shingles, plywood, etc.) (Blower Building)	Contract 1-92 - Pine Street WWTP (General/Mechanical)	1995-96	\$22,960.00		
55	354	Door, Frame, Hardware (Blower Building)	Contract 1-92 - Pine Street WWTP (General/Mechanical)	1995-96	\$5,200.00		
56	354	Aluminum Windows (Blower Building)	Contract 1-92 - Pine Street WWTP (General/Mechanical)	1995-96	\$2,660.00		
57	354	Excavation (Aerobic Digesters)	Contract 1-92 - Pine Street WWTP (General/Mechanical)	1995-96	\$23,148.00		
58	354	Backfill (Aerobic Digesters)	Contract 1-92 - Pine Street WWTP (General/Mechanical)	1995-96	\$4,840.00		
59	354	Concrete (Aerobic Digesters)	Contract 1-92 - Pine Street WWTP (General/Mechanical)	1995-96	\$127,687.00		
60	354	Reinforcing (Aerobic Digesters)	Contract 1-92 - Pine Street WWTP (General/Mechanical)	1995-96	\$57,596.00		
61	354	Handrail (Aerobic Digesters)	Contract 1-92 - Pine Street WWTP (General/Mechanical)	1995-96	\$3,053.00		
62	354	Nosings (Aerobic Digesters)	Contract 1-92 - Pine Street WWTP (General/Mechanical)	1995-96	\$550.00		

**APPENDIX A - WASTEWATER SYSTEM  
ORIGINAL COST OF INVENTORY/ASSETS**

**ORGANIZED BY ACCOUNT NUMBER**

ITEM #	ACCOUNT	PROPERTY DESCRIPTION	CONTRACT NUMBER	YEAR	UNIT COST	ACCOUNT COST	COMMENTS
63	354	Excavation (Garage)	Contract 1-92 - Pine Street WWTP (General/Mechanical)	1995-96	\$833.00		
64	354	Backfill (Garage)	Contract 1-92 - Pine Street WWTP (General/Mechanical)	1995-96	\$420.00		
65	354	Concrete - Footers (Garage)	Contract 1-92 - Pine Street WWTP (General/Mechanical)	1995-96	\$4,930.00		
66	354	Reinforcing - Footers (Garage)	Contract 1-92 - Pine Street WWTP (General/Mechanical)	1995-96	\$1,428.00		
67	354	Concrete - Slab (Garage)	Contract 1-92 - Pine Street WWTP (General/Mechanical)	1995-96	\$5,940.00		
68	354	Reinforcing - Slab (Garage)	Contract 1-92 - Pine Street WWTP (General/Mechanical)	1995-96	\$952.00		
69	354	Masonry (Garage)	Contract 1-92 - Pine Street WWTP (General/Mechanical)	1995-96	\$3,171.00		
70	354	Metal Building (Garage)	Contract 1-92 - Pine Street WWTP (General/Mechanical)	1995-96	\$42,802.00		
71	354	Door, Frame, Hardware (Garage)	Contract 1-92 - Pine Street WWTP (General/Mechanical)	1995-96	\$1,245.00		
72	354	Overhead Door (Garage)	Contract 1-92 - Pine Street WWTP (General/Mechanical)	1995-96	\$5,100.00		
73	354	Concrete (Effluent Water Building)	Contract 1-92 - Pine Street WWTP (General/Mechanical)	1995-96	\$1,602.00		
74	354	Reinforcing (Effluent Water Building)	Contract 1-92 - Pine Street WWTP (General/Mechanical)	1995-96	\$952.00		
75	354	Masonry (Effluent Water Building)	Contract 1-92 - Pine Street WWTP (General/Mechanical)	1995-96	\$3,575.00		
76	354	Misc. Metals: Handrails (Effluent Water Building)	Contract 1-92 - Pine Street WWTP (General/Mechanical)	1995-96	\$2,420.00		
77	354	Roof System (Trusses, shingles, plywood, etc.) (Effluent Water Building)	Contract 1-92 - Pine Street WWTP (General/Mechanical)	1995-96	\$5,713.00		
78	354	Hatches (Effluent Water Building)	Contract 1-92 - Pine Street WWTP (General/Mechanical)	1995-96	\$1,695.00		

**APPENDIX A - WASTEWATER SYSTEM  
ORIGINAL COST OF INVENTORY/ASSETS**

**ORGANIZED BY ACCOUNT NUMBER**

ITEM #	ACCOUNT	PROPERTY DESCRIPTION	CONTRACT NUMBER	YEAR	UNIT COST	ACCOUNT COST	COMMENTS
79	354	Door, Frame, Hardware (Effluent Water Building)	Contract 1-92 - Pine Street WWTP (General/Mechanical)	1995-96	\$1,245.00		
80	354	Concrete (W.A.S. Holding Tank)	Contract 1-92 - Pine Street WWTP (General/Mechanical)	1995-96	\$12,921.00		
81	354	Concrete (Chlorine Contact Tank)	Contract 1-92 - Pine Street WWTP (General/Mechanical)	1995-96	\$70,632.00		
82	354	Reinforcing (Chlorine Contact Tank)	Contract 1-92 - Pine Street WWTP (General/Mechanical)	1995-96	\$19,992.00		
83	354	Handrail (Chlorine Contact Tank)	Contract 1-92 - Pine Street WWTP (General/Mechanical)	1995-96	\$6,829.50		
84	354	Rework Walkways (Chlorine Contact Tank)	Contract 1-92 - Pine Street WWTP (General/Mechanical)	1995-96	\$3,198.00		
85	354	Demolition (Control Building Renovations)	Contract 1-92 - Pine Street WWTP (General/Mechanical)	1995-96	\$546.00		
86	354	Concrete (Control Building Renovations)	Contract 1-92 - Pine Street WWTP (General/Mechanical)	1995-96	\$232.00		
87	354	Misc. Metals (Control Building Renovations)	Contract 1-92 - Pine Street WWTP (General/Mechanical)	1995-96	\$2,242.00		
88	354	Rubber Flooring (Control Building Renovations)	Contract 1-92 - Pine Street WWTP (General/Mechanical)	1995-96	\$5,278.50		
89	354	Lab Furnishings/Apparatus (Control Building Renovations)	Contract 1-92 - Pine Street WWTP (General/Mechanical)	1995-96	\$13,038.00		
90	354	Misc. Metals: Ladder/Platform (Existing Digester Tank)	Contract 1-92 - Pine Street WWTP (General/Mechanical)	1995-96	\$1,905.00		
91	354	Demo at Headworks	Contract 1-92 - Pine Street WWTP (General/Mechanical)	1995-96	\$3,158.00		
92	354	Grading	Contract 1-92 - Pine Street WWTP (General/Mechanical)	1995-96	\$3,159.00		
93	354	Seeding	Contract 1-92 - Pine Street WWTP (General/Mechanical)	1995-96	\$8,424.00		
94	354	Fencing	Contract 1-92 - Pine Street WWTP (General/Mechanical)	1995-96	\$4,675.00		

**APPENDIX A - WASTEWATER SYSTEM  
ORIGINAL COST OF INVENTORY/ASSETS**

**ORGANIZED BY ACCOUNT NUMBER**

ITEM #	ACCOUNT	PROPERTY DESCRIPTION	CONTRACT NUMBER	YEAR	UNIT COST	ACCOUNT COST	COMMENTS
95	354	Paving (Bituminous & Stone)	Contract 1-92 - Pine Street WWTP (General/Mechanical)	1995-96	\$77,275.00		
96	354	Ceiling Systems	Contract 1-92 - Pine Street WWTP (General/Mechanical)	1995-96	\$25,920.00		
97	354	Painting	Contract 1-92 - Pine Street WWTP (General/Mechanical)	1995-96	\$89,500.00		
98	354	Catch Basins	Contract 1-92 - Pine Street WWTP (General/Mechanical)	1995-96	\$12,375.00		
99	354	Lavatory	Contract 1-92 - Pine Street WWTP (General/Mechanical)	1995-96	\$1,085.00		
100	354	Water Heater	Contract 1-92 - Pine Street WWTP (General/Mechanical)	1995-96	\$806.00		
101	354	Floor Drains	Contract 1-92 - Pine Street WWTP (General/Mechanical)	1995-96	\$1,295.00		
102	354	Hydropneumatic Tank	Contract 1-92 - Pine Street WWTP (General/Mechanical)	1995-96	\$5,420.00		
103	354	Trench Excavation	Contract 1-92 - Pine Street WWTP (General/Mechanical)	1995-96	\$40,024.00		
104	354	Trench Backfill	Contract 1-92 - Pine Street WWTP (General/Mechanical)	1995-96	\$40,024.00		
105	354	Change Order No. 1	Contract 1-92 - Pine Street WWTP (General/Mechanical)	1995-96	-\$12,600.00		
106	354	Change Order No. 2	Contract 1-92 - Pine Street WWTP (General/Mechanical)	1995-96	\$5,759.02		
107	354	Change Order No. 4	Contract 1-92 - Pine Street WWTP (General/Mechanical)	1995-96	\$19,949.47		
108	354	Change Order No. 5	Contract 1-92 - Pine Street WWTP (General/Mechanical)	1995-96	\$22,029.44		
109	354	Change Order No. 6	Contract 1-92 - Pine Street WWTP (General/Mechanical)	1995-96	\$8,572.00		
110	354	Change Order No. 7	Contract 1-92 - Pine Street WWTP (General/Mechanical)	1995-96	\$4,486.27		

**APPENDIX A - WASTEWATER SYSTEM  
ORIGINAL COST OF INVENTORY/ASSETS**

**ORGANIZED BY ACCOUNT NUMBER**

ITEM #	ACCOUNT	PROPERTY DESCRIPTION	CONTRACT NUMBER	YEAR	UNIT COST	ACCOUNT COST	COMMENTS
111	354	Change Order No. 8	Contract 1-92 - Pine Street WWTP (General/Mechanical)	1995-96	\$2,902.45		
112	354	Change Order No. 9	Contract 1-92 - Pine Street WWTP (General/Mechanical)	1995-96	\$901.62		
113	354	Change Order No. 10	Contract 1-92 - Pine Street WWTP (General/Mechanical)	1995-96	\$1,968.21		
114	354	Change Order No. 11	Contract 1-92 - Pine Street WWTP (General/Mechanical)	1995-96	\$22,000.00		
115	354	Change Order No. 12	Contract 1-92 - Pine Street WWTP (General/Mechanical)	1995-96	\$25,020.00		
116	354	Change Order No. 13	Contract 1-92 - Pine Street WWTP (General/Mechanical)	1995-96	\$1,058.11		
117	354	Change Order No. 14	Contract 1-92 - Pine Street WWTP (General/Mechanical)	1995-96	\$78,000.00		
118	354	Change Order No. 15	Contract 1-92 - Pine Street WWTP (General/Mechanical)	1995-96	\$20,462.94		
119	354	Change Order No. 16	Contract 1-92 - Pine Street WWTP (General/Mechanical)	1995-96	\$7,717.28		
120	354	Select Backfill	Contract 2003-2 - General/Mechanical Construction	2004	\$11,750.00		
121	354	Straw Bale Barrier/Filter Fabric	Contract 2003-2 - General/Mechanical Construction	2004	\$12,510.00		
122	354	Exploratory Excavation	Contract 2003-2 - General/Mechanical Construction	2004	\$4,500.00		
123	354	Mobilization/Demobilization	Contract 2003-2 - General/Mechanical Construction	2004	\$5,500.00		
124	354	Electrical Work	Contract 2003-3 - Electrical Construction	2004	\$70,500.00		
125	354	Bond	Contract 2-92 - Pine Street WWTP (Electrical)	1995-96	\$10,000.00		
126	354	Inspection	Contract 2-92 - Pine Street WWTP (Electrical)	1995-96	\$5,000.00		

**APPENDIX A - WASTEWATER SYSTEM  
ORIGINAL COST OF INVENTORY/ASSETS**

**ORGANIZED BY ACCOUNT NUMBER**

ITEM #	ACCOUNT	PROPERTY DESCRIPTION	CONTRACT NUMBER	YEAR	UNIT COST	ACCOUNT COST	COMMENTS
127	354	Temp. Power Construction	Contract 2-92 - Pine Street WWTP (Electrical)	1995-96	\$10,000.00		
128	354	Mobilization	Contract 2-92 - Pine Street WWTP (Electrical)	1995-96	\$8,000.00		
129	354	General Conditions	Contract 2-92 - Pine Street WWTP (Electrical)	1995-96	\$10,000.00		
130	354	Excavation and Backfill	Contract 2-92 - Pine Street WWTP (Electrical)	1995-96	\$28,000.00		
131	354	A	Contract 2-92 - Pine Street WWTP (Electrical)	1995-96	\$1,000.00		
132	354	B	Contract 2-92 - Pine Street WWTP (Electrical)	1995-96	\$1,400.00		
133	354	C	Contract 2-92 - Pine Street WWTP (Electrical)	1995-96	\$3,300.00		
134	354	D	Contract 2-92 - Pine Street WWTP (Electrical)	1995-96	\$1,500.00		
135	354	E	Contract 2-92 - Pine Street WWTP (Electrical)	1995-96	\$3,000.00		
136	354	F	Contract 2-92 - Pine Street WWTP (Electrical)	1995-96	\$4,600.00		
137	354	H	Contract 2-92 - Pine Street WWTP (Electrical)	1995-96	\$9,000.00		
138	354	J	Contract 2-92 - Pine Street WWTP (Electrical)	1995-96	\$2,000.00		
139	354	V	Contract 2-92 - Pine Street WWTP (Electrical)	1995-96	\$1,300.00		
140	354	W	Contract 2-92 - Pine Street WWTP (Electrical)	1995-96	\$800.00		
141	354	X	Contract 2-92 - Pine Street WWTP (Electrical)	1995-96	\$1,700.00		
142	354	Y	Contract 2-92 - Pine Street WWTP (Electrical)	1995-96	\$1,000.00		

**APPENDIX A - WASTEWATER SYSTEM  
ORIGINAL COST OF INVENTORY/ASSETS**

**ORGANIZED BY ACCOUNT NUMBER**

ITEM #	ACCOUNT	PROPERTY DESCRIPTION	CONTRACT NUMBER	YEAR	UNIT COST	ACCOUNT COST	COMMENTS
143	354	Z	Contract 2-92 - Pine Street WWTP (Electrical)	1995-96	\$600.00		
144	354	100 AMP Main Breaker	Contract 2-92 - Pine Street WWTP (Electrical)	1995-96	\$10,000.00		
145	354	1200 AMP MCC	Contract 2-92 - Pine Street WWTP (Electrical)	1995-96	\$15,000.00		
146	354	30 KVA Trans, 1 phase	Contract 2-92 - Pine Street WWTP (Electrical)	1995-96	\$1,000.00		
147	354	30 KVA Trans, 3 phase	Contract 2-92 - Pine Street WWTP (Electrical)	1995-96	\$1,500.00		
148	354	15 KVA Trans, 3 phase	Contract 2-92 - Pine Street WWTP (Electrical)	1995-96	\$2,400.00		
149	354	45 KVA Trans, 3 phase	Contract 2-92 - Pine Street WWTP (Electrical)	1995-96	\$1,700.00		
150	354	Panel LP4	Contract 2-92 - Pine Street WWTP (Electrical)	1995-96	\$2,500.00		
151	354	Panel LP4A	Contract 2-92 - Pine Street WWTP (Electrical)	1995-96	\$2,500.00		
152	354	Panel LP5	Contract 2-92 - Pine Street WWTP (Electrical)	1995-96	\$2,500.00		
153	354	Panel LP3	Contract 2-92 - Pine Street WWTP (Electrical)	1995-96	\$2,500.00		
154	354	Panel LP2	Contract 2-92 - Pine Street WWTP (Electrical)	1995-96	\$2,500.00		
155	354	Panel LP6	Contract 2-92 - Pine Street WWTP (Electrical)	1995-96	\$2,500.00		
156	354	Manhole	Contract 2-92 - Pine Street WWTP (Electrical)	1995-96	\$6,000.00		
157	354	Light Pole Bases	Contract 2-92 - Pine Street WWTP (Electrical)	1995-96	\$10,500.00		
158	354	Fire Alarm Control Panel	Contract 2-92 - Pine Street WWTP (Electrical)	1995-96	\$2,500.00		

**APPENDIX A - WASTEWATER SYSTEM  
ORIGINAL COST OF INVENTORY/ASSETS**

**ORGANIZED BY ACCOUNT NUMBER**

ITEM #	ACCOUNT	PROPERTY DESCRIPTION	CONTRACT NUMBER	YEAR	UNIT COST	ACCOUNT COST	COMMENTS
159	354	Fire Alarm Auto Disks	Contract 2-92 - Pine Street WWTP (Electrical)	1995-96	\$1,000.00		
160	354	Fire Alarm Pull Stations	Contract 2-92 - Pine Street WWTP (Electrical)	1995-96	\$1,100.00		
161	354	Fire Alarm Horns	Contract 2-92 - Pine Street WWTP (Electrical)	1995-96	\$700.00		
162	354	Fire Alarm Heat Det.	Contract 2-92 - Pine Street WWTP (Electrical)	1995-96	\$1,900.00		
163	354	500Kw Generator	Contract 2-92 - Pine Street WWTP (Electrical)	1995-96	\$55,000.00		
164	354	Fuel Tank	Contract 2-92 - Pine Street WWTP (Electrical)	1995-96	\$22,000.00		
165	354	Auto Transfer SW.	Contract 2-92 - Pine Street WWTP (Electrical)	1995-96	\$5,000.00		
166	354	1" PVC	Contract 2-92 - Pine Street WWTP (Electrical)	1995-96	\$3,000.00		
167	354	1 1/2" PVC	Contract 2-92 - Pine Street WWTP (Electrical)	1995-96	\$1,500.00		
168	354	2" PVC	Contract 2-92 - Pine Street WWTP (Electrical)	1995-96	\$13,000.00		
169	354	4" PVC	Contract 2-92 - Pine Street WWTP (Electrical)	1995-96	\$5,600.00		
170	354	3/4" GRC	Contract 2-92 - Pine Street WWTP (Electrical)	1995-96	\$17,500.00		
171	354	1" GRC	Contract 2-92 - Pine Street WWTP (Electrical)	1995-96	\$2,200.00		
172	354	1 1/4" GRC	Contract 2-92 - Pine Street WWTP (Electrical)	1995-96	\$1,000.00		
173	354	1 1/2" GRC	Contract 2-92 - Pine Street WWTP (Electrical)	1995-96	\$425.00		
174	354	2" GRC	Contract 2-92 - Pine Street WWTP (Electrical)	1995-96	\$1,700.00		

**APPENDIX A - WASTEWATER SYSTEM  
ORIGINAL COST OF INVENTORY/ASSETS**

**ORGANIZED BY ACCOUNT NUMBER**

ITEM #	ACCOUNT	PROPERTY DESCRIPTION	CONTRACT NUMBER	YEAR	UNIT COST	ACCOUNT COST	COMMENTS
175	354	4" GRC	Contract 2-92 - Pine Street WWTP (Electrical)	1995-96	\$1,500.00		
176	354	3/4" GRC PVC	Contract 2-92 - Pine Street WWTP (Electrical)	1995-96	\$6,000.00		
177	354	1" GRC PVC	Contract 2-92 - Pine Street WWTP (Electrical)	1995-96	\$2,750.00		
178	354	12 THHN	Contract 2-92 - Pine Street WWTP (Electrical)	1995-96	\$4,000.00		
179	354	10 THHN	Contract 2-92 - Pine Street WWTP (Electrical)	1995-96	\$2,200.00		
180	354	8 THHN	Contract 2-92 - Pine Street WWTP (Electrical)	1995-96	\$2,200.00		
181	354	6 THHN	Contract 2-92 - Pine Street WWTP (Electrical)	1995-96	\$1,500.00		
182	354	3 THHN	Contract 2-92 - Pine Street WWTP (Electrical)	1995-96	\$1,500.00		
183	354	3/0 THHN	Contract 2-92 - Pine Street WWTP (Electrical)	1995-96	\$5,000.00		
184	354	500 MCM	Contract 2-92 - Pine Street WWTP (Electrical)	1995-96	\$8,500.00		
185	354	20 A Switches	Contract 2-92 - Pine Street WWTP (Electrical)	1995-96	\$950.00		
186	354	20 A Rec.	Contract 2-92 - Pine Street WWTP (Electrical)	1995-96	\$1,950.00		
187	354	System Cable	Contract 2-92 - Pine Street WWTP (Electrical)	1995-96	\$48,000.00		
188	354	Spare fuse Cabinet and Fuses	Contract 2-92 - Pine Street WWTP (Electrical)	1995-96	\$5,000.00		
189	354	Coordination Drawing	Contract 2-92 - Pine Street WWTP (Electrical)	1995-96	\$5,000.00		
190	354	Project Demo	Contract 2-92 - Pine Street WWTP (Electrical)	1995-96	\$10,000.00		

**APPENDIX A - WASTEWATER SYSTEM  
ORIGINAL COST OF INVENTORY/ASSETS**

**ORGANIZED BY ACCOUNT NUMBER**

ITEM #	ACCOUNT	PROPERTY DESCRIPTION	CONTRACT NUMBER	YEAR	UNIT COST	ACCOUNT COST	COMMENTS
191	354	30 AMP Disc.	Contract 2-92 - Pine Street WWTP (Electrical)	1995-96	\$7,000.00		
192	354	Fractional HP Starters	Contract 2-92 - Pine Street WWTP (Electrical)	1995-96	\$700.00		
193	354	Motor Connections	Contract 2-92 - Pine Street WWTP (Electrical)	1995-96	\$10,468.00		
194	354	20 KVAR capacitors	Contract 2-92 - Pine Street WWTP (Electrical)	1995-96	\$8,000.00		
195	354	Fuel piping	Contract 2-92 - Pine Street WWTP (Electrical)	1995-96	\$1,000.00		
196	354	C.O. 1 - 1% Bid Reduction	Contract 2-92 - Pine Street WWTP (Electrical)	1995-96	-\$4,868.40		
197	354	C.O. 2 - Red. For Underground Service	Contract 2-92 - Pine Street WWTP (Electrical)	1995-96	-\$500.00		
198	354	C.O. 3 - Various Adds	Contract 2-92 - Pine Street WWTP (Electrical)	1995-96	\$4,770.75		
199	354	C.O. 4 - Various Adds	Contract 2-92 - Pine Street WWTP (Electrical)	1995-96	\$3,851.75		
200	354	C.O. 5 - Various Adds	Contract 2-92 - Pine Street WWTP (Electrical)	1995-96	\$1,710.40		
201	354	C.O. 6 - Various Adds	Contract 2-92 - Pine Street WWTP (Electrical)	1995-96	\$301.00		
202	354	C.O. 7 - Various Adds	Contract 2-92 - Pine Street WWTP (Electrical)	1995-96	\$858.75		
203	354	C.O. 8 - Delayed Costs	Contract 2-92 - Pine Street WWTP (Electrical)	1995-96	\$6,000.00		
204	354	Contract Bond	Contract 3-92 - Pine Street Wastewater Treatment Plant (HVAC)	1995-96	\$2,684.00		
205	354	Office Mobilization	Contract 3-92 - Pine Street Wastewater Treatment Plant (HVAC)	1995-96	\$2,596.00		
206	354	Field Mobilization	Contract 3-92 - Pine Street Wastewater Treatment Plant (HVAC)	1995-96	\$1,294.00		

**APPENDIX A - WASTEWATER SYSTEM  
ORIGINAL COST OF INVENTORY/ASSETS**

**ORGANIZED BY ACCOUNT NUMBER**

ITEM #	ACCOUNT	PROPERTY DESCRIPTION	CONTRACT NUMBER	YEAR	UNIT COST	ACCOUNT COST	COMMENTS
207	354	1/2 - 2" Blk. Stl. Pipe	Contract 3-92 - Pine Street Wastewater Treatment Plant (HVAC)	1995-96	\$17,940.00		
208	354	3/4 Copper Tubing	Contract 3-92 - Pine Street Wastewater Treatment Plant (HVAC)	1995-96	\$700.00		
209	354	2-3" PVC Intake	Contract 3-92 - Pine Street Wastewater Treatment Plant (HVAC)	1995-96	\$1,350.00		
210	354	2-3" CPVC Intake	Contract 3-92 - Pine Street Wastewater Treatment Plant (HVAC)	1995-96	\$1,890.00		
211	354	Automatic Air Vents	Contract 3-92 - Pine Street Wastewater Treatment Plant (HVAC)	1995-96	\$380.00		
212	354	Pumps	Contract 3-92 - Pine Street Wastewater Treatment Plant (HVAC)	1995-96	\$425.00		
213	354	Air Separators	Contract 3-92 - Pine Street Wastewater Treatment Plant (HVAC)	1995-96	\$148.00		
214	354	Expansion Tank	Contract 3-92 - Pine Street Wastewater Treatment Plant (HVAC)	1995-96	\$1,140.00		
215	354	Boilers	Contract 3-92 - Pine Street Wastewater Treatment Plant (HVAC)	1995-96	\$19,304.00		
216	354	Finned Tube Radiation	Contract 3-92 - Pine Street Wastewater Treatment Plant (HVAC)	1995-96	\$9,620.00		
217	354	Gas Fired Units	Contract 3-92 - Pine Street Wastewater Treatment Plant (HVAC)	1995-96	\$3,216.00		
218	354	Propane Heater	Contract 3-92 - Pine Street Wastewater Treatment Plant (HVAC)	1995-96	\$542.00		
219	354	Thru-the-Wall A/C	Contract 3-92 - Pine Street Wastewater Treatment Plant (HVAC)	1995-96	\$4,124.00		
220	354	Misc. Demolition	Contract 3-92 - Pine Street Wastewater Treatment Plant (HVAC)	1995-96	\$1,983.00		
221	354	Concrete Pads	Contract 3-92 - Pine Street Wastewater Treatment Plant (HVAC)	1995-96	\$352.00		
222	354	Painting	Contract 3-92 - Pine Street Wastewater Treatment Plant (HVAC)	1995-96	\$500.00		

**APPENDIX A - WASTEWATER SYSTEM  
ORIGINAL COST OF INVENTORY/ASSETS**

**ORGANIZED BY ACCOUNT NUMBER**

ITEM #	ACCOUNT	PROPERTY DESCRIPTION	CONTRACT NUMBER	YEAR	UNIT COST	ACCOUNT COST	COMMENTS
223	354	Misc. Cut and Patch	Contract 3-92 - Pine Street Wastewater Treatment Plant (HVAC)	1995-96	\$2,552.00		
224	354	Insulation	Contract 3-92 - Pine Street Wastewater Treatment Plant (HVAC)	1995-96	\$1,400.00		
225	354	ATC	Contract 3-92 - Pine Street Wastewater Treatment Plant (HVAC)	1995-96	\$18,320.00		
226	354	GRD's	Contract 3-92 - Pine Street Wastewater Treatment Plant (HVAC)	1995-96	\$600.00		
227	354	Fans	Contract 3-92 - Pine Street Wastewater Treatment Plant (HVAC)	1995-96	\$10,208.00		
228	354	Roof Hoods	Contract 3-92 - Pine Street Wastewater Treatment Plant (HVAC)	1995-96	\$5,136.00		
229	354	Roof Curbs	Contract 3-92 - Pine Street Wastewater Treatment Plant (HVAC)	1995-96	\$1,680.00		
230	354	Electric Heat	Contract 3-92 - Pine Street Wastewater Treatment Plant (HVAC)	1995-96	\$2,512.00		
231	354	Louvers	Contract 3-92 - Pine Street Wastewater Treatment Plant (HVAC)	1995-96	\$2,552.00		
232	354	Starters and Disconnect	Contract 3-92 - Pine Street Wastewater Treatment Plant (HVAC)	1995-96	\$1,888.00		
233	354	Balance	Contract 3-92 - Pine Street Wastewater Treatment Plant (HVAC)	1995-96	\$600.00		
234	354	Roofing	Contract 3-92 - Pine Street Wastewater Treatment Plant (HVAC)	1995-96	\$549.00		
235	354	Flue Pipe	Contract 3-92 - Pine Street Wastewater Treatment Plant (HVAC)	1995-96	\$950.00		
236	354	Motor Operated Damper and Bbd	Contract 3-92 - Pine Street Wastewater Treatment Plant (HVAC)	1995-96	\$495.00		
237	354	Fin Tube	Contract 3-92 - Pine Street Wastewater Treatment Plant (HVAC)	1995-96	\$4,680.00		
238	354	Galv. Duct Fab	Contract 3-92 - Pine Street Wastewater Treatment Plant (HVAC)	1995-96	\$2,125.00		

**APPENDIX A - WASTEWATER SYSTEM  
ORIGINAL COST OF INVENTORY/ASSETS**

**ORGANIZED BY ACCOUNT NUMBER**

ITEM #	ACCOUNT	PROPERTY DESCRIPTION	CONTRACT NUMBER	YEAR	UNIT COST	ACCOUNT COST	COMMENTS
239	354	Galv. Duct Install	Contract 3-92 - Pine Street Wastewater Treatment Plant (HVAC)	1995-96	\$1,700.00		
240	354	Galv. Fitting Fab	Contract 3-92 - Pine Street Wastewater Treatment Plant (HVAC)	1995-96	\$740.00		
241	354	Galv. Fitting Duct	Contract 3-92 - Pine Street Wastewater Treatment Plant (HVAC)	1995-96	\$925.00		
242	354	Change Order #1	Contract 3-92 - Pine Street Wastewater Treatment Plant (HVAC)	1995-96	\$550.00		
243	354	Bonds & Insurances	Contract 4-92 - Kinzua Wastewater Treatment Plant General/Mechanical	1995-96	\$54,300.00		
244	354	Mobilization/Demobilization	Contract 4-92 - Kinzua Wastewater Treatment Plant General/Mechanical	1995-96	\$12,800.00		
245	354	Temporary Facilities	Contract 4-92 - Kinzua Wastewater Treatment Plant General/Mechanical	1995-96	\$30,000.00		
246	354	Supervision	Contract 4-92 - Kinzua Wastewater Treatment Plant General/Mechanical	1995-96	\$66,000.00		
247	354	Testing Services	Contract 4-92 - Kinzua Wastewater Treatment Plant General/Mechanical	1995-96	\$16,500.00		
248	354	Start-up	Contract 4-92 - Kinzua Wastewater Treatment Plant General/Mechanical	1995-96	\$6,000.00		
249	354	Clear & Grub (Site Work)	Contract 4-92 - Kinzua Wastewater Treatment Plant General/Mechanical	1995-96	\$5,000.00		
250	354	Erosion Control (Site Work)	Contract 4-92 - Kinzua Wastewater Treatment Plant General/Mechanical	1995-96	\$3,000.00		
251	354	Site Grading (Site Work)	Contract 4-92 - Kinzua Wastewater Treatment Plant General/Mechanical	1995-96	\$3,000.00		
252	354	Fine Grading & Seeding (Site Work)	Contract 4-92 - Kinzua Wastewater Treatment Plant General/Mechanical	1995-96	\$8,000.00		
253	354	Concrete Sidewalks (Site Work)	Contract 4-92 - Kinzua Wastewater Treatment Plant General/Mechanical	1995-96	\$5,000.00		
254	354	Temporary Roadways (Site Work)	Contract 4-92 - Kinzua Wastewater Treatment Plant General/Mechanical	1995-96	\$10,000.00		

**APPENDIX A - WASTEWATER SYSTEM  
ORIGINAL COST OF INVENTORY/ASSETS**

**ORGANIZED BY ACCOUNT NUMBER**

ITEM #	ACCOUNT	PROPERTY DESCRIPTION	CONTRACT NUMBER	YEAR	UNIT COST	ACCOUNT COST	COMMENTS
255	354	Asphalt Roadways (Site Work)	Contract 4-92 - Kinzua Wastewater Treatment Plant General/Mechanical	1995-96	\$30,000.00		
256	354	Gravel Roadways (Site Work)	Contract 4-92 - Kinzua Wastewater Treatment Plant General/Mechanical	1995-96	\$2,500.00		
257	354	Chain link Fencing (Site Work)	Contract 4-92 - Kinzua Wastewater Treatment Plant General/Mechanical	1995-96	\$8,000.00		
258	354	Storm Piping (Site Work)	Contract 4-92 - Kinzua Wastewater Treatment Plant General/Mechanical	1995-96	\$16,000.00		
259	354	Yard Piping & Precast Vaults Mat. (Site Work)	Contract 4-92 - Kinzua Wastewater Treatment Plant General/Mechanical	1995-96	\$320,000.00		
260	354	Yard Piping & Precast Vaults Ins. (Site Work)	Contract 4-92 - Kinzua Wastewater Treatment Plant General/Mechanical	1995-96	\$165,000.00		
261	354	Excavation and Dewatering (Preliminary Treatment Structure)	Contract 4-92 - Kinzua Wastewater Treatment Plant General/Mechanical	1995-96	\$2,000.00		
262	354	Backfill (Preliminary Treatment Structure)	Contract 4-92 - Kinzua Wastewater Treatment Plant General/Mechanical	1995-96	\$2,500.00		
263	354	Concrete Footers & Base Slabs (Preliminary Treatment Structure)	Contract 4-92 - Kinzua Wastewater Treatment Plant General/Mechanical	1995-96	\$25,000.00		
264	354	Concrete Walls (Preliminary Treatment Structure)	Contract 4-92 - Kinzua Wastewater Treatment Plant General/Mechanical	1995-96	\$35,000.00		
265	354	Concrete Suspended Slabs (Preliminary Treatment Structure)	Contract 4-92 - Kinzua Wastewater Treatment Plant General/Mechanical	1995-96	\$3,500.00		
266	354	Concrete Slabs on Grade (Preliminary Treatment Structure)	Contract 4-92 - Kinzua Wastewater Treatment Plant General/Mechanical	1995-96	\$1,500.00		
267	354	Precast Concrete Planks (Preliminary Treatment Structure)	Contract 4-92 - Kinzua Wastewater Treatment Plant General/Mechanical	1995-96	\$4,000.00		
268	354	Masonry Building Construction (Preliminary Treatment Structure)	Contract 4-92 - Kinzua Wastewater Treatment Plant General/Mechanical	1995-96	\$38,000.00		
269	354	Miscellaneous Metals (Preliminary Treatment Structure)	Contract 4-92 - Kinzua Wastewater Treatment Plant General/Mechanical	1995-96	\$30,800.00		
270	354	Roof Structure (Preliminary Treatment Structure)	Contract 4-92 - Kinzua Wastewater Treatment Plant General/Mechanical	1995-96	\$52,000.00		

**APPENDIX A - WASTEWATER SYSTEM  
ORIGINAL COST OF INVENTORY/ASSETS**

**ORGANIZED BY ACCOUNT NUMBER**

ITEM #	ACCOUNT	PROPERTY DESCRIPTION	CONTRACT NUMBER	YEAR	UNIT COST	ACCOUNT COST	COMMENTS
271	354	Doors & Windows (Preliminary Treatment Structure)	Contract 4-92 - Kinzua Wastewater Treatment Plant General/Mechanical	1995-96	\$19,000.00		
272	354	Durock Ceilings (Preliminary Treatment Structure)	Contract 4-92 - Kinzua Wastewater Treatment Plant General/Mechanical	1995-96	\$17,000.00		
273	354	Painting & Coatings (Preliminary Treatment Structure)	Contract 4-92 - Kinzua Wastewater Treatment Plant General/Mechanical	1995-96	\$33,000.00		
274	354	Fiberglass Gratings (Preliminary Treatment Structure)	Contract 4-92 - Kinzua Wastewater Treatment Plant General/Mechanical	1995-96	\$22,000.00		
275	354	Excavation and Dewatering (Sequential Batch Reactor)	Contract 4-92 - Kinzua Wastewater Treatment Plant General/Mechanical	1995-96	\$53,000.00		
276	354	Backfill (Sequential Batch Reactor)	Contract 4-92 - Kinzua Wastewater Treatment Plant General/Mechanical	1995-96	\$20,000.00		
277	354	Concrete Base Slabs (Sequential Batch Reactor)	Contract 4-92 - Kinzua Wastewater Treatment Plant General/Mechanical	1995-96	\$286,000.00		
278	354	Concrete Walls (Sequential Batch Reactor)	Contract 4-92 - Kinzua Wastewater Treatment Plant General/Mechanical	1995-96	\$390,000.00		
279	354	Concrete Suspended Slabs (Sequential Batch Reactor)	Contract 4-92 - Kinzua Wastewater Treatment Plant General/Mechanical	1995-96	\$20,000.00		
280	354	Miscellaneous Metals (Sequential Batch Reactor)	Contract 4-92 - Kinzua Wastewater Treatment Plant General/Mechanical	1995-96	\$27,500.00		
281	354	Painting & Coatings (Sequential Batch Reactor)	Contract 4-92 - Kinzua Wastewater Treatment Plant General/Mechanical	1995-96	\$7,500.00		
282	354	Demolition Work (Chlorine Contact Tank)	Contract 4-92 - Kinzua Wastewater Treatment Plant General/Mechanical	1995-96	\$20,000.00		
283	354	Concrete Slabs & Fillet (Chlorine Contact Tank)	Contract 4-92 - Kinzua Wastewater Treatment Plant General/Mechanical	1995-96	\$20,000.00		
284	354	Concrete Walls (Chlorine Contact Tank)	Contract 4-92 - Kinzua Wastewater Treatment Plant General/Mechanical	1995-96	\$51,000.00		
285	354	Miscellaneous Metals (Chlorine Contact Tank)	Contract 4-92 - Kinzua Wastewater Treatment Plant General/Mechanical	1995-96	\$5,500.00		
286	354	Painting & Coatings (Chlorine Contact Tank)	Contract 4-92 - Kinzua Wastewater Treatment Plant General/Mechanical	1995-96	\$4,300.00		

**APPENDIX A - WASTEWATER SYSTEM  
ORIGINAL COST OF INVENTORY/ASSETS**

**ORGANIZED BY ACCOUNT NUMBER**

ITEM #	ACCOUNT	PROPERTY DESCRIPTION	CONTRACT NUMBER	YEAR	UNIT COST	ACCOUNT COST	COMMENTS
287	354	Demolition Work (Effluent Water Building)	Contract 4-92 - Kinzua Wastewater Treatment Plant General/Mechanical	1995-96	\$15,000.00		
288	354	Concrete Suspended Slabs (Effluent Water Building)	Contract 4-92 - Kinzua Wastewater Treatment Plant General/Mechanical	1995-96	\$3,100.00		
289	354	Concrete Fillet (Effluent Water Building)	Contract 4-92 - Kinzua Wastewater Treatment Plant General/Mechanical	1995-96	\$1,700.00		
290	354	Masonry Building Construction (Effluent Water Building)	Contract 4-92 - Kinzua Wastewater Treatment Plant General/Mechanical	1995-96	\$3,100.00		
291	354	Miscellaneous Metals (Effluent Water Building)	Contract 4-92 - Kinzua Wastewater Treatment Plant General/Mechanical	1995-96	\$5,500.00		
292	354	Roof Structure (Effluent Water Building)	Contract 4-92 - Kinzua Wastewater Treatment Plant General/Mechanical	1995-96	\$9,000.00		
293	354	Door & Hatches (Effluent Water Building)	Contract 4-92 - Kinzua Wastewater Treatment Plant General/Mechanical	1995-96	\$3,500.00		
294	354	Durock Ceilings (Effluent Water Building)	Contract 4-92 - Kinzua Wastewater Treatment Plant General/Mechanical	1995-96	\$2,000.00		
295	354	Painting & Coatings (Effluent Water Building)	Contract 4-92 - Kinzua Wastewater Treatment Plant General/Mechanical	1995-96	\$4,300.00		
296	354	Shoring (W.A.S. Pump Structure)	Contract 4-92 - Kinzua Wastewater Treatment Plant General/Mechanical	1995-96	\$125,000.00		
297	354	Excavation and Dewatering (W.A.S. Pump Structure)	Contract 4-92 - Kinzua Wastewater Treatment Plant General/Mechanical	1995-96	\$20,000.00		
298	354	Backfill (W.A.S. Pump Structure)	Contract 4-92 - Kinzua Wastewater Treatment Plant General/Mechanical	1995-96	\$10,000.00		
299	354	Concrete Base Slabs (W.A.S. Pump Structure)	Contract 4-92 - Kinzua Wastewater Treatment Plant General/Mechanical	1995-96	\$12,000.00		
300	354	Concrete Walls (W.A.S. Pump Structure)	Contract 4-92 - Kinzua Wastewater Treatment Plant General/Mechanical	1995-96	\$56,000.00		
301	354	Concrete Suspended Slabs (W.A.S. Pump Structure)	Contract 4-92 - Kinzua Wastewater Treatment Plant General/Mechanical	1995-96	\$20,000.00		
302	354	Masonry Building Construction (W.A.S. Pump Structure)	Contract 4-92 - Kinzua Wastewater Treatment Plant General/Mechanical	1995-96	\$2,400.00		

**APPENDIX A - WASTEWATER SYSTEM  
ORIGINAL COST OF INVENTORY/ASSETS**

**ORGANIZED BY ACCOUNT NUMBER**

ITEM #	ACCOUNT	PROPERTY DESCRIPTION	CONTRACT NUMBER	YEAR	UNIT COST	ACCOUNT COST	COMMENTS
303	354	Miscellaneous Metals (W.A.S. Pump Structure)	Contract 4-92 - Kinzua Wastewater Treatment Plant General/Mechanical	1995-96	\$11,000.00		
304	354	Roof Structure (W.A.S. Pump Structure)	Contract 4-92 - Kinzua Wastewater Treatment Plant General/Mechanical	1995-96	\$6,000.00		
305	354	Fluid Applied Roofing (W.A.S. Pump Structure)	Contract 4-92 - Kinzua Wastewater Treatment Plant General/Mechanical	1995-96	\$700.00		
306	354	Doors & Hatches (W.A.S. Pump Structure)	Contract 4-92 - Kinzua Wastewater Treatment Plant General/Mechanical	1995-96	\$4,000.00		
307	354	Durock Ceilings (W.A.S. Pump Structure)	Contract 4-92 - Kinzua Wastewater Treatment Plant General/Mechanical	1995-96	\$800.00		
308	354	Painting & Coatings (W.A.S. Pump Structure)	Contract 4-92 - Kinzua Wastewater Treatment Plant General/Mechanical	1995-96	\$6,500.00		
309	354	Excavation (Belt Filter Press & Blower Building)	Contract 4-92 - Kinzua Wastewater Treatment Plant General/Mechanical	1995-96	\$2,500.00		
310	354	Backfill (Belt Filter Press & Blower Building)	Contract 4-92 - Kinzua Wastewater Treatment Plant General/Mechanical	1995-96	\$2,000.00		
311	354	Concrete Footings (Belt Filter Press & Blower Building)	Contract 4-92 - Kinzua Wastewater Treatment Plant General/Mechanical	1995-96	\$8,000.00		
312	354	Concrete Equipment Bases (Belt Filter Press & Blower Building)	Contract 4-92 - Kinzua Wastewater Treatment Plant General/Mechanical	1995-96	\$10,200.00		
313	354	Concrete Slabs on Grade (Belt Filter Press & Blower Building)	Contract 4-92 - Kinzua Wastewater Treatment Plant General/Mechanical	1995-96	\$9,100.00		
314	354	Concrete Suspended Slabs (Belt Filter Press & Blower Building)	Contract 4-92 - Kinzua Wastewater Treatment Plant General/Mechanical	1995-96	\$600.00		
315	354	Masonry Building Construction (Belt Filter Press & Blower Building)	Contract 4-92 - Kinzua Wastewater Treatment Plant General/Mechanical	1995-96	\$40,000.00		
316	354	Miscellaneous Metals (Belt Filter Press & Blower Building)	Contract 4-92 - Kinzua Wastewater Treatment Plant General/Mechanical	1995-96	\$16,500.00		
317	354	Roof Structure (Belt Filter Press & Blower Building)	Contract 4-92 - Kinzua Wastewater Treatment Plant General/Mechanical	1995-96	\$68,300.00		
318	354	Doors & Windows (Belt Filter Press & Blower Building)	Contract 4-92 - Kinzua Wastewater Treatment Plant General/Mechanical	1995-96	\$24,400.00		

**APPENDIX A - WASTEWATER SYSTEM  
ORIGINAL COST OF INVENTORY/ASSETS**

**ORGANIZED BY ACCOUNT NUMBER**

ITEM #	ACCOUNT	PROPERTY DESCRIPTION	CONTRACT NUMBER	YEAR	UNIT COST	ACCOUNT COST	COMMENTS
319	354	Durock Ceilings (Belt Filter Press & Blower Building)	Contract 4-92 - Kinzua Wastewater Treatment Plant General/Mechanical	1995-96	\$26,400.00		
320	354	Painting & Coatings (Belt Filter Press & Blower Building)	Contract 4-92 - Kinzua Wastewater Treatment Plant General/Mechanical	1995-96	\$37,500.00		
321	354	Demolition Work (W.A.S. Holding Tank)	Contract 4-92 - Kinzua Wastewater Treatment Plant General/Mechanical	1995-96	\$10,000.00		
322	354	Concrete Floor Fill (W.A.S. Holding Tank)	Contract 4-92 - Kinzua Wastewater Treatment Plant General/Mechanical	1995-96	\$6,700.00		
323	354	Roof Repair (W.A.S. Holding Tank)	Contract 4-92 - Kinzua Wastewater Treatment Plant General/Mechanical	1995-96	\$2,000.00		
324	354	Painting & Coatings (W.A.S. Holding Tank)	Contract 4-92 - Kinzua Wastewater Treatment Plant General/Mechanical	1995-96	\$4,300.00		
325	354	Excavation and Dewatering (Aerobics Digesters)	Contract 4-92 - Kinzua Wastewater Treatment Plant General/Mechanical	1995-96	\$10,000.00		
326	354	Backfill (Aerobics Digesters)	Contract 4-92 - Kinzua Wastewater Treatment Plant General/Mechanical	1995-96	\$7,500.00		
327	354	Concrete Base Slabs (Aerobics Digesters)	Contract 4-92 - Kinzua Wastewater Treatment Plant General/Mechanical	1995-96	\$76,000.00		
328	354	Concrete Walls (Aerobics Digesters)	Contract 4-92 - Kinzua Wastewater Treatment Plant General/Mechanical	1995-96	\$133,000.00		
329	354	Concrete Suspended Slabs (Aerobics Digesters)	Contract 4-92 - Kinzua Wastewater Treatment Plant General/Mechanical	1995-96	\$4,000.00		
330	354	Miscellaneous Metals (Aerobics Digesters)	Contract 4-92 - Kinzua Wastewater Treatment Plant General/Mechanical	1995-96	\$13,200.00		
331	354	Painting & Coatings (Aerobics Digesters)	Contract 4-92 - Kinzua Wastewater Treatment Plant General/Mechanical	1995-96	\$5,500.00		
332	354	Demolition Work (Existing Control Building)	Contract 4-92 - Kinzua Wastewater Treatment Plant General/Mechanical	1995-96	\$20,000.00		
333	354	Demolition Work (Existing Sprinkling Filter)	Contract 4-92 - Kinzua Wastewater Treatment Plant General/Mechanical	1995-96	\$50,000.00		
334	354	Excavation and Dewatering (Septage Acceptance Facility)	Contract 4-92 - Kinzua Wastewater Treatment Plant General/Mechanical	1995-96	\$3,500.00		

**APPENDIX A - WASTEWATER SYSTEM  
ORIGINAL COST OF INVENTORY/ASSETS**

**ORGANIZED BY ACCOUNT NUMBER**

ITEM #	ACCOUNT	PROPERTY DESCRIPTION	CONTRACT NUMBER	YEAR	UNIT COST	ACCOUNT COST	COMMENTS
335	354	Backfill (Septage Acceptance Facility)	Contract 4-92 - Kinzua Wastewater Treatment Plant General/Mechanical	1995-96	\$2,000.00		
336	354	Concrete Footers & Base Slabs (Septage Acceptance Facility)	Contract 4-92 - Kinzua Wastewater Treatment Plant General/Mechanical	1995-96	\$5,200.00		
337	354	Concrete Walls (Septage Acceptance Facility)	Contract 4-92 - Kinzua Wastewater Treatment Plant General/Mechanical	1995-96	\$7,000.00		
338	354	Concrete Suspended Slabs (Septage Acceptance Facility)	Contract 4-92 - Kinzua Wastewater Treatment Plant General/Mechanical	1995-96	\$4,200.00		
339	354	Concrete Slabs on Grade (Septage Acceptance Facility)	Contract 4-92 - Kinzua Wastewater Treatment Plant General/Mechanical	1995-96	\$1,100.00		
340	354	Masonry Building Construction (Septage Acceptance Facility)	Contract 4-92 - Kinzua Wastewater Treatment Plant General/Mechanical	1995-96	\$4,500.00		
341	354	Roof Structure (Septage Acceptance Facility)	Contract 4-92 - Kinzua Wastewater Treatment Plant General/Mechanical	1995-96	\$14,000.00		
342	354	Doors, Windows & Hatches (Septage Acceptance Facility)	Contract 4-92 - Kinzua Wastewater Treatment Plant General/Mechanical	1995-96	\$7,200.00		
343	354	Durock Ceilings (Septage Acceptance Facility)	Contract 4-92 - Kinzua Wastewater Treatment Plant General/Mechanical	1995-96	\$3,000.00		
344	354	Painting & Coatings (Septage Acceptance Facility)	Contract 4-92 - Kinzua Wastewater Treatment Plant General/Mechanical	1995-96	\$5,400.00		
345	354	Demolition Work (Existing Grit Building)	Contract 4-92 - Kinzua Wastewater Treatment Plant General/Mechanical	1995-96	\$30,000.00		
346	354	Plumbing Work - Mat	Contract 4-92 - Kinzua Wastewater Treatment Plant General/Mechanical	1995-96	\$20,000.00		
347	354	Plumbing Work - Install	Contract 4-92 - Kinzua Wastewater Treatment Plant General/Mechanical	1995-96	\$15,000.00		
348	354	Change Order 1 (Deduct)	Contract 4-92 - Kinzua Wastewater Treatment Plant General/Mechanical	1995-96	-\$9,000.00		
349	354	Change Order 2 (N.C.)	Contract 4-92 - Kinzua Wastewater Treatment Plant General/Mechanical	1995-96	\$0.00		
350	354	Change Order 3 (Add)	Contract 4-92 - Kinzua Wastewater Treatment Plant General/Mechanical	1995-96	\$975.20		

**APPENDIX A - WASTEWATER SYSTEM  
ORIGINAL COST OF INVENTORY/ASSETS**

**ORGANIZED BY ACCOUNT NUMBER**

ITEM #	ACCOUNT	PROPERTY DESCRIPTION	CONTRACT NUMBER	YEAR	UNIT COST	ACCOUNT COST	COMMENTS
351	354	Change Order 4 (Add)	Contract 4-92 - Kinzua Wastewater Treatment Plant General/Mechanical	1995-96	\$8,897.14		
352	354	Change Order 5 (Add)	Contract 4-92 - Kinzua Wastewater Treatment Plant General/Mechanical	1995-96	\$18,260.00		
353	354	Change Order 6 (Add)	Contract 4-92 - Kinzua Wastewater Treatment Plant General/Mechanical	1995-96	\$4,885.00		
354	354	Change Order 7 (Add)	Contract 4-92 - Kinzua Wastewater Treatment Plant General/Mechanical	1995-96	\$30,027.00		
355	354	Change Order 8 (Add)	Contract 4-92 - Kinzua Wastewater Treatment Plant General/Mechanical	1995-96	\$988.89		
356	354	Change Order 9 (Add)	Contract 4-92 - Kinzua Wastewater Treatment Plant General/Mechanical	1995-96	\$3,235.00		
357	354	Change Order 10 (N.C.)	Contract 4-92 - Kinzua Wastewater Treatment Plant General/Mechanical	1995-96	\$0.00		
358	354	Change Order 11 (Add)	Contract 4-92 - Kinzua Wastewater Treatment Plant General/Mechanical	1995-96	\$2,981.00		
359	354	Bond	Contract 5-92 - Kinzua Wastewater Treatment Plant (Electrical)	1995-96	\$10,000.00		
360	354	Inspection	Contract 5-92 - Kinzua Wastewater Treatment Plant (Electrical)	1995-96	\$5,000.00		
361	354	Temp. Power Construction	Contract 5-92 - Kinzua Wastewater Treatment Plant (Electrical)	1995-96	\$10,000.00		
362	354	Mobilization	Contract 5-92 - Kinzua Wastewater Treatment Plant (Electrical)	1995-96	\$8,000.00		
363	354	General Conditions	Contract 5-92 - Kinzua Wastewater Treatment Plant (Electrical)	1995-96	\$10,000.00		
364	354	Excavation and Backfill	Contract 5-92 - Kinzua Wastewater Treatment Plant (Electrical)	1995-96	\$28,000.00		
365	354	A	Contract 5-92 - Kinzua Wastewater Treatment Plant (Electrical)	1995-96	\$2,000.00		
366	354	B	Contract 5-92 - Kinzua Wastewater Treatment Plant (Electrical)	1995-96	\$2,200.00		

**APPENDIX A - WASTEWATER SYSTEM  
ORIGINAL COST OF INVENTORY/ASSETS**

**ORGANIZED BY ACCOUNT NUMBER**

ITEM #	ACCOUNT	PROPERTY DESCRIPTION	CONTRACT NUMBER	YEAR	UNIT COST	ACCOUNT COST	COMMENTS
367	354	C	Contract 5-92 - Kinzua Wastewater Treatment Plant (Electrical)	1995-96	\$3,000.00		
368	354	D	Contract 5-92 - Kinzua Wastewater Treatment Plant (Electrical)	1995-96	\$600.00		
369	354	E	Contract 5-92 - Kinzua Wastewater Treatment Plant (Electrical)	1995-96	\$2,300.00		
370	354	F	Contract 5-92 - Kinzua Wastewater Treatment Plant (Electrical)	1995-96	\$5,200.00		
371	354	G	Contract 5-92 - Kinzua Wastewater Treatment Plant (Electrical)	1995-96	\$200.00		
372	354	V	Contract 5-92 - Kinzua Wastewater Treatment Plant (Electrical)	1995-96	\$1,000.00		
373	354	W	Contract 5-92 - Kinzua Wastewater Treatment Plant (Electrical)	1995-96	\$800.00		
374	354	X	Contract 5-92 - Kinzua Wastewater Treatment Plant (Electrical)	1995-96	\$600.00		
375	354	Y	Contract 5-92 - Kinzua Wastewater Treatment Plant (Electrical)	1995-96	\$800.00		
376	354	Z	Contract 5-92 - Kinzua Wastewater Treatment Plant (Electrical)	1995-96	\$400.00		
377	354	H	Contract 5-92 - Kinzua Wastewater Treatment Plant (Electrical)	1995-96	\$10,800.00		
378	354	100 AMP Main Breaker	Contract 5-92 - Kinzua Wastewater Treatment Plant (Electrical)	1995-96	\$10,000.00		
379	354	1200 AMP MCC	Contract 5-92 - Kinzua Wastewater Treatment Plant (Electrical)	1995-96	\$15,000.00		
380	354	30 KVA Trans, 1 phase	Contract 5-92 - Kinzua Wastewater Treatment Plant (Electrical)	1995-96	\$1,000.00		
381	354	30 KVA Trans, 3 phase	Contract 5-92 - Kinzua Wastewater Treatment Plant (Electrical)	1995-96	\$2,800.00		
382	354	40 KVA Trans, 3 phase	Contract 5-92 - Kinzua Wastewater Treatment Plant (Electrical)	1995-96	\$1,700.00		

**APPENDIX A - WASTEWATER SYSTEM  
ORIGINAL COST OF INVENTORY/ASSETS**

**ORGANIZED BY ACCOUNT NUMBER**

ITEM #	ACCOUNT	PROPERTY DESCRIPTION	CONTRACT NUMBER	YEAR	UNIT COST	ACCOUNT COST	COMMENTS
383	354	15 KVA Trans, 3 phase	Contract 5-92 - Kinzua Wastewater Treatment Plant (Electrical)	1995-96	\$1,200.00		
384	354	Panel LP4	Contract 5-92 - Kinzua Wastewater Treatment Plant (Electrical)	1995-96	\$2,500.00		
385	354	Panel LP4A	Contract 5-92 - Kinzua Wastewater Treatment Plant (Electrical)	1995-96	\$2,500.00		
386	354	Panel LP6	Contract 5-92 - Kinzua Wastewater Treatment Plant (Electrical)	1995-96	\$2,500.00		
387	354	Panel LP1	Contract 5-92 - Kinzua Wastewater Treatment Plant (Electrical)	1995-96	\$2,500.00		
388	354	Panel LP3	Contract 5-92 - Kinzua Wastewater Treatment Plant (Electrical)	1995-96	\$2,500.00		
389	354	Panel LP2	Contract 5-92 - Kinzua Wastewater Treatment Plant (Electrical)	1995-96	\$2,500.00		
390	354	Panel LP5	Contract 5-92 - Kinzua Wastewater Treatment Plant (Electrical)	1995-96	\$2,500.00		
391	354	Manhole	Contract 5-92 - Kinzua Wastewater Treatment Plant (Electrical)	1995-96	\$6,000.00		
392	354	Light Pole Bases	Contract 5-92 - Kinzua Wastewater Treatment Plant (Electrical)	1995-96	\$12,000.00		
393	354	Fire Alarm Control Panel	Contract 5-92 - Kinzua Wastewater Treatment Plant (Electrical)	1995-96	\$2,500.00		
394	354	Auto Dialer Fire Alarm	Contract 5-92 - Kinzua Wastewater Treatment Plant (Electrical)	1995-96	\$1,000.00		
395	354	Fire Pull Stations	Contract 5-92 - Kinzua Wastewater Treatment Plant (Electrical)	1995-96	\$1,100.00		
396	354	Fire Horns	Contract 5-92 - Kinzua Wastewater Treatment Plant (Electrical)	1995-96	\$700.00		
397	354	Fire Heat Detector	Contract 5-92 - Kinzua Wastewater Treatment Plant (Electrical)	1995-96	\$2,100.00		
398	354	500 KW Generator	Contract 5-92 - Kinzua Wastewater Treatment Plant (Electrical)	1995-96	\$55,000.00		

**APPENDIX A - WASTEWATER SYSTEM  
ORIGINAL COST OF INVENTORY/ASSETS**

**ORGANIZED BY ACCOUNT NUMBER**

ITEM #	ACCOUNT	PROPERTY DESCRIPTION	CONTRACT NUMBER	YEAR	UNIT COST	ACCOUNT COST	COMMENTS
399	354	Fuel Tank	Contract 5-92 - Kinzua Wastewater Treatment Plant (Electrical)	1995-96	\$22,000.00		
400	354	Auto Transfer Switch	Contract 5-92 - Kinzua Wastewater Treatment Plant (Electrical)	1995-96	\$5,000.00		
401	354	1" PVC	Contract 5-92 - Kinzua Wastewater Treatment Plant (Electrical)	1995-96	\$4,000.00		
402	354	1 1/2" PVC	Contract 5-92 - Kinzua Wastewater Treatment Plant (Electrical)	1995-96	\$1,500.00		
403	354	2" PVC	Contract 5-92 - Kinzua Wastewater Treatment Plant (Electrical)	1995-96	\$15,000.00		
404	354	4" PVC	Contract 5-92 - Kinzua Wastewater Treatment Plant (Electrical)	1995-96	\$7,000.00		
405	354	3/4" GRC	Contract 5-92 - Kinzua Wastewater Treatment Plant (Electrical)	1995-96	\$17,500.00		
406	354	1" GRC	Contract 5-92 - Kinzua Wastewater Treatment Plant (Electrical)	1995-96	\$3,750.00		
407	354	1 1/4" GRC	Contract 5-92 - Kinzua Wastewater Treatment Plant (Electrical)	1995-96	\$2,000.00		
408	354	1 1/2" GRC	Contract 5-92 - Kinzua Wastewater Treatment Plant (Electrical)	1995-96	\$425.00		
409	354	2" GRC	Contract 5-92 - Kinzua Wastewater Treatment Plant (Electrical)	1995-96	\$9,000.00		
410	354	4" GRC	Contract 5-92 - Kinzua Wastewater Treatment Plant (Electrical)	1995-96	\$1,600.00		
411	354	3/4" GRC PVC	Contract 5-92 - Kinzua Wastewater Treatment Plant (Electrical)	1995-96	\$7,500.00		
412	354	1" GRC PVC	Contract 5-92 - Kinzua Wastewater Treatment Plant (Electrical)	1995-96	\$2,750.00		
413	354	12 Wire	Contract 5-92 - Kinzua Wastewater Treatment Plant (Electrical)	1995-96	\$6,000.00		
414	354	10 Wire	Contract 5-92 - Kinzua Wastewater Treatment Plant (Electrical)	1995-96	\$3,750.00		

**APPENDIX A - WASTEWATER SYSTEM  
ORIGINAL COST OF INVENTORY/ASSETS**

**ORGANIZED BY ACCOUNT NUMBER**

ITEM #	ACCOUNT	PROPERTY DESCRIPTION	CONTRACT NUMBER	YEAR	UNIT COST	ACCOUNT COST	COMMENTS
415	354	8 Wire	Contract 5-92 - Kinzua Wastewater Treatment Plant (Electrical)	1995-96	\$2,800.00		
416	354	6 Wire	Contract 5-92 - Kinzua Wastewater Treatment Plant (Electrical)	1995-96	\$1,350.00		
417	354	3 Wire	Contract 5-92 - Kinzua Wastewater Treatment Plant (Electrical)	1995-96	\$2,000.00		
418	354	3/0 Wire	Contract 5-92 - Kinzua Wastewater Treatment Plant (Electrical)	1995-96	\$12,000.00		
419	354	500 MCM	Contract 5-92 - Kinzua Wastewater Treatment Plant (Electrical)	1995-96	\$10,409.00		
420	354	20 A Switches	Contract 5-92 - Kinzua Wastewater Treatment Plant (Electrical)	1995-96	\$870.00		
421	354	20 A Rec.	Contract 5-92 - Kinzua Wastewater Treatment Plant (Electrical)	1995-96	\$1,530.00		
422	354	System Cable	Contract 5-92 - Kinzua Wastewater Treatment Plant (Electrical)	1995-96	\$54,000.00		
423	354	Spare fuse Cabinet and Fuses	Contract 5-92 - Kinzua Wastewater Treatment Plant (Electrical)	1995-96	\$5,000.00		
424	354	Coordination Drawing	Contract 5-92 - Kinzua Wastewater Treatment Plant (Electrical)	1995-96	\$5,000.00		
425	354	Project Demo	Contract 5-92 - Kinzua Wastewater Treatment Plant (Electrical)	1995-96	\$8,000.00		
426	354	30 AMP Disc.	Contract 5-92 - Kinzua Wastewater Treatment Plant (Electrical)	1995-96	\$9,800.00		
427	354	Fractional HP Starters	Contract 5-92 - Kinzua Wastewater Treatment Plant (Electrical)	1995-96	\$1,500.00		
428	354	Motor Connections	Contract 5-92 - Kinzua Wastewater Treatment Plant (Electrical)	1995-96	\$12,600.00		
429	354	20 KVAR capacitors	Contract 5-92 - Kinzua Wastewater Treatment Plant (Electrical)	1995-96	\$8,000.00		
430	354	Fuel piping	Contract 5-92 - Kinzua Wastewater Treatment Plant (Electrical)	1995-96	\$1,000.00		

**APPENDIX A - WASTEWATER SYSTEM  
ORIGINAL COST OF INVENTORY/ASSETS**

**ORGANIZED BY ACCOUNT NUMBER**

ITEM #	ACCOUNT	PROPERTY DESCRIPTION	CONTRACT NUMBER	YEAR	UNIT COST	ACCOUNT COST	COMMENTS
431	354	C.O. 1 - 1% Bid Reduction	Contract 5-92 - Kinzua Wastewater Treatment Plant (Electrical)	1995-96	-\$5,236.35		
432	354	C.O. 2 - Red. For Underground Service	Contract 5-92 - Kinzua Wastewater Treatment Plant (Electrical)	1995-96	\$1,911.25		
433	354	C.O. 3 - Various Adds	Contract 5-92 - Kinzua Wastewater Treatment Plant (Electrical)	1995-96	\$3,941.75		
434	354	C.O. 4 - Solenoid Valve, XFR.	Contract 5-92 - Kinzua Wastewater Treatment Plant (Electrical)	1995-96	\$1,111.25		
435	354	C.O. 5 - Various Adds	Contract 5-92 - Kinzua Wastewater Treatment Plant (Electrical)	1995-96	\$1,050.00		
436	354	C.O. 6 - Various Adds	Contract 5-92 - Kinzua Wastewater Treatment Plant (Electrical)	1995-96	\$301.00		
437	354	C.O. 7 - Various Adds	Contract 5-92 - Kinzua Wastewater Treatment Plant (Electrical)	1995-96	\$1,097.00		
438	354	C.O. 7 - Delayed Cost	Contract 5-92 - Kinzua Wastewater Treatment Plant (Electrical)	1995-96	\$9,000.00		
439	354	Contract Bond	Contract 6-92 - Kinzua Wastewater Treatment Plant (HVAC)	1995-96	\$2,887.00		
440	354	Office Mobilization	Contract 6-92 - Kinzua Wastewater Treatment Plant (HVAC)	1995-96	\$2,792.00		
441	354	Field Mobilization	Contract 6-92 - Kinzua Wastewater Treatment Plant (HVAC)	1995-96	\$1,388.00		
442	354	1/2 - 2" Blk. Stl. Pipe	Contract 6-92 - Kinzua Wastewater Treatment Plant (HVAC)	1995-96	\$18,720.00		
443	354	3/4 Copper Tubing	Contract 6-92 - Kinzua Wastewater Treatment Plant (HVAC)	1995-96	\$700.00		
444	354	2-3" PVC Intake	Contract 6-92 - Kinzua Wastewater Treatment Plant (HVAC)	1995-96	\$1,350.00		
445	354	2-3" CPVC Intake	Contract 6-92 - Kinzua Wastewater Treatment Plant (HVAC)	1995-96	\$1,890.00		
446	354	Automatic Air Vents	Contract 6-92 - Kinzua Wastewater Treatment Plant (HVAC)	1995-96	\$380.00		

**APPENDIX A - WASTEWATER SYSTEM  
 ORIGINAL COST OF INVENTORY/ASSETS**

**ORGANIZED BY ACCOUNT NUMBER**

ITEM #	ACCOUNT	PROPERTY DESCRIPTION	CONTRACT NUMBER	YEAR	UNIT COST	ACCOUNT COST	COMMENTS
447	354	Pumps	Contract 6-92 - Kinzua Wastewater Treatment Plant (HVAC)	1995-96	\$425.00		
448	354	Air Separators	Contract 6-92 - Kinzua Wastewater Treatment Plant (HVAC)	1995-96	\$148.00		
449	354	Expansion Tank	Contract 6-92 - Kinzua Wastewater Treatment Plant (HVAC)	1995-96	\$1,140.00		
450	354	Boilers	Contract 6-92 - Kinzua Wastewater Treatment Plant (HVAC)	1995-96	\$19,304.00		
451	354	Finned Tube Radiator	Contract 6-92 - Kinzua Wastewater Treatment Plant (HVAC)	1995-96	\$9,620.00		
452	354	Gas Fired Units	Contract 6-92 - Kinzua Wastewater Treatment Plant (HVAC)	1995-96	\$4,788.00		
453	354	Propane Heater	Contract 6-92 - Kinzua Wastewater Treatment Plant (HVAC)	1995-96	\$542.00		
454	354	Thru-the-Wall A/C	Contract 6-92 - Kinzua Wastewater Treatment Plant (HVAC)	1995-96	\$3,030.00		
455	354	Misc. Demolition	Contract 6-92 - Kinzua Wastewater Treatment Plant (HVAC)	1995-96	\$1,637.00		
456	354	Concrete Pads	Contract 6-92 - Kinzua Wastewater Treatment Plant (HVAC)	1995-96	\$352.00		
457	354	Painting	Contract 6-92 - Kinzua Wastewater Treatment Plant (HVAC)	1995-96	\$500.00		
458	354	Misc. Cut and Patch	Contract 6-92 - Kinzua Wastewater Treatment Plant (HVAC)	1995-96	\$1,914.00		
459	354	Insulation	Contract 6-92 - Kinzua Wastewater Treatment Plant (HVAC)	1995-96	\$1,400.00		
460	354	ATC	Contract 6-92 - Kinzua Wastewater Treatment Plant (HVAC)	1995-96	\$18,364.00		
461	354	GRD's	Contract 6-92 - Kinzua Wastewater Treatment Plant (HVAC)	1995-96	\$1,400.00		
462	354	Fans	Contract 6-92 - Kinzua Wastewater Treatment Plant (HVAC)	1995-96	\$11,502.00		

**APPENDIX A - WASTEWATER SYSTEM  
ORIGINAL COST OF INVENTORY/ASSETS**

**ORGANIZED BY ACCOUNT NUMBER**

ITEM #	ACCOUNT	PROPERTY DESCRIPTION	CONTRACT NUMBER	YEAR	UNIT COST	ACCOUNT COST	COMMENTS
463	354	Roof Hoods	Contract 6-92 - Kinzua Wastewater Treatment Plant (HVAC)	1995-96	\$6,848.00		
464	354	Roof Curbs	Contract 6-92 - Kinzua Wastewater Treatment Plant (HVAC)	1995-96	\$2,352.00		
465	354	Electric Heat	Contract 6-92 - Kinzua Wastewater Treatment Plant (HVAC)	1995-96	\$5,628.00		
466	354	Louvers	Contract 6-92 - Kinzua Wastewater Treatment Plant (HVAC)	1995-96	\$2,552.00		
467	354	Starters and Disconnect	Contract 6-92 - Kinzua Wastewater Treatment Plant (HVAC)	1995-96	\$2,343.00		
468	354	Balance	Contract 6-92 - Kinzua Wastewater Treatment Plant (HVAC)	1995-96	\$650.00		
469	354	Roofing	Contract 6-92 - Kinzua Wastewater Treatment Plant (HVAC)	1995-96	\$205.00		
470	354	Flue Pipe	Contract 6-92 - Kinzua Wastewater Treatment Plant (HVAC)	1995-96	\$1,140.00		
471	354	Motor Operated Damper and Bbd	Contract 6-92 - Kinzua Wastewater Treatment Plant (HVAC)	1995-96	\$585.00		
472	354	Fin Tube	Contract 6-92 - Kinzua Wastewater Treatment Plant (HVAC)	1995-96	\$4,464.00		
473	354	Galv. Duct Fab	Contract 6-92 - Kinzua Wastewater Treatment Plant (HVAC)	1995-96	\$2,750.00		
474	354	Galv. Duct Install	Contract 6-92 - Kinzua Wastewater Treatment Plant (HVAC)	1995-96	\$2,200.00		
475	354	Galv. Fitting Fab	Contract 6-92 - Kinzua Wastewater Treatment Plant (HVAC)	1995-96	\$760.00		
476	354	Galv. Fitting Install	Contract 6-92 - Kinzua Wastewater Treatment Plant (HVAC)	1995-96	\$950.00		
477	354	Change Order #1	Contract 6-92 - Kinzua Wastewater Treatment Plant (HVAC)	1995-96	\$550.00		
478	354	Select Backfill	Contract No. 2006-1	2006	\$1,250.00		

**APPENDIX A - WASTEWATER SYSTEM  
ORIGINAL COST OF INVENTORY/ASSETS**

**ORGANIZED BY ACCOUNT NUMBER**

ITEM #	ACCOUNT	PROPERTY DESCRIPTION	CONTRACT NUMBER	YEAR	UNIT COST	ACCOUNT COST	COMMENTS
479	354	Straw Bale Barrier/Filter Fence	Contract No. 2006-1	2006	\$9,730.00		

**APPENDIX A - WASTEWATER SYSTEM  
ORIGINAL COST OF INVENTORY/ASSETS**

**ORGANIZED BY ACCOUNT NUMBER**

ITEM #	ACCOUNT	PROPERTY DESCRIPTION	CONTRACT NUMBER	YEAR	UNIT COST	ACCOUNT COST	COMMENTS
480	354	Exploratory Excavation	Contract No. 2006-1	2006	\$255.00		
481	354	1 1/2" ID-2 Bituminous Wear Course	Contract No. 2006-1	2006	\$30,015.00		
482	354	4" ID-2 Bituminous Binder Course	Contract No. 2006-1	2006	\$53,690.00		
483	354	Access Road Construction	Contract No. 2006-1				
484	354	Crush Stone Base Course	Contract No. 2006-1	2006	\$70,000.00		
485	354	Geotextile Material	Contract No. 2006-1	2006	\$18,000.00		
486	354	Crushed Limestone Shoulder	Contract No. 2006-1	2006	\$4,800.00		
487	354	24" HDPE Storm Sewer Installation	Contract No. 2006-1	2006	\$1,000.00		
488	354	Mobilization/Demobilization	Contract No. 2006-1	2006	\$5,500.00		
489	354	ALT for PA2A Material on Shoulder	Contract No. 2006-1	2006	\$3,000.00		
490	354	Other Costs	Other Costs - Sanitary Sewers, Pump Station, Force Main and Access Road		\$74,038.22		
491	354	Lynch & Lynch		1994	\$46,925.60		
492	354	Woods & Baker		1994	\$31,451.50		
493	354	Junipers		1996	\$3,150.00		Item 7 under 354
494	354	2 Boilers		2007	\$14,535.00		
495	354	HTP Elite 80 boiler Kinzua WWTP		2010	\$5,690.00		

**APPENDIX A - WASTEWATER SYSTEM  
ORIGINAL COST OF INVENTORY/ASSETS**

**ORGANIZED BY ACCOUNT NUMBER**

ITEM #	ACCOUNT	PROPERTY DESCRIPTION	CONTRACT NUMBER	YEAR	UNIT COST	ACCOUNT COST	COMMENTS
496	354	Boiler		2015	\$10,266.40		
497	354	Kenmore Freezer		2017	\$508.00		Item 27 under 354
498	354	Pole Lighting - WWTP Kinzua & Pine		2017	\$5,489.41		Item 20 Under 354
499	354	Legal		1996	\$79,172.10		
500	354	Admin		1996	\$13,264.93		
501	354	Engineering - Basic (BCM)		1996	\$515,000.00		
502	354	Engineering - inspection (BCM)		1996	\$202,600.00		
503	354	Engineering - Additional (BCM)		1996	\$36,075.81		
504	354	Engineering - Basic (KLH)		1996	\$240,503.29		
505	354	Engineering - inspection (KLH)		1996	\$296,500.00		
506	354	Engineering - additional (KLH)		1996	\$108,582.95		
507	354	Interest per contract		1996	\$413,705.00		
508	354	Refinancing		1996	\$317,516.75		
509	354	Relocation expenses		1996	\$8,233.65		
510	354	Additional Authority paid expenditures		1996	\$84,281.44		
511	354	Kinzua Oil Well		1999	\$16,248.53		

**APPENDIX A - WASTEWATER SYSTEM  
ORIGINAL COST OF INVENTORY/ASSETS**

**ORGANIZED BY ACCOUNT NUMBER**

ITEM #	ACCOUNT	PROPERTY DESCRIPTION	CONTRACT NUMBER	YEAR	UNIT COST	ACCOUNT COST	COMMENTS
512	354	Engineering - West Run Interceptor		2001	\$16,758.55		
513	354	Holman St. Project - Engineering		2002	\$10,446.11		
514	354	Patching - Wetmore Ave.		2003	\$5,466.30		
515	354	New roof - KWWTP		2006	\$5,962.00		
516	354	Pine St. New Trinity Boiler (Allied Systems)		2012	\$6,242.00		
<b>SUB-TOTAL =</b>						<b>\$9,477,073.12</b>	

**360 - Collection Sewers - Force**

517	360	3" Diameter Force Main	Contract 2003-2 - General/Mechanical Construction	2004	\$25,258.50		
518	360	4" Diameter Force Main	Contract 93-1 - West Kane Area Sewer	1995	\$29,271.00		
519	360	Manholes Frame & Covers	Contract 93-1 - West Kane Area Sewer	1995	\$9,000.00		
520	360	Inflow Protectors	Contract 93-1 - West Kane Area Sewer	1995	\$2,400.00		
521	360	4" Diameter Force Main	Contract 93-2 - Route 66 Area Sewers	1996	\$72,853.00		
522	360	Air Release Valve and Vault	Contract 93-2 - Route 66 Area Sewers	1996	\$3,200.00		
523	360	2" Dia Force Main	Contract 93-2 - Route 66 Area Sewers	1996	\$32,418.00		
524	360	1 1/2 Diameter Service FM	Contract 93-2 - Route 66 Area Sewers	1996	\$3,664.00		
525	360	4" Diameter FM	Contract 93-3 - Westwind Area Sewers	1996	\$17,257.50		
526	360	1 1/2" Diameter Service FM	Contract 93-3 - Westwind Area Sewers	1996	\$12,718.75		

**APPENDIX A - WASTEWATER SYSTEM  
ORIGINAL COST OF INVENTORY/ASSETS**

**ORGANIZED BY ACCOUNT NUMBER**

ITEM #	ACCOUNT	PROPERTY DESCRIPTION	CONTRACT NUMBER	YEAR	UNIT COST	ACCOUNT COST	COMMENTS
527	360	4" Diameter Force Main	Contract 93-4 - East Kane Sewer	1995	\$90,240.00		
528	360	6" Diameter Force Main	Contract 93-4 - East Kane Sewer	1995	\$45,528.00		
529	360	1 1/2 Diameter Service FM	Contract 93-5 - Greendale Area Sewers	1996	\$0.00		
530	360	4" Diameter Force Main	Contract 93-6 - Northwest Area Sewers	1995	\$86,144.00		
531	360	Air Release Valve Vault	Contract 93-6 - Northwest Area Sewers	1995	\$2,800.00		
532	360	Force Main Signs	Contract 93-6 - Northwest Area Sewers	1995	\$1,358.38		
<b>SUB-TOTAL =</b>						<b>\$434,111.13</b>	

**361 - Collection Sewers - Gravity**

533	361	2-inch VCP Sewer	1967 Project	1968	\$195.64		Estimated using ENR Construction Cost Index
534	361	4-inch VCP Sewer	1967 Project	1968	\$4,850.73		Estimated using ENR Construction Cost Index
535	361	6-inch VCP Sewer	1967 Project	1968	\$18,812.79		Estimated using ENR Construction Cost Index
536	361	8-inch VCP Sewer	1967 Project	1968	\$434,294.49		Estimated using ENR Construction Cost Index
537	361	10-inch VCP Sewer	1967 Project	1968	\$196,281.75		Estimated using ENR Construction Cost Index
538	361	12-inch VCP Sewer	1967 Project	1968	\$207,151.87		Estimated using ENR Construction Cost Index
539	361	15-inch VCP Sewer	1967 Project	1968	\$16,018.43		Estimated using ENR Construction Cost Index
540	361	16-inch VCP Sewer	1967 Project	1968	\$660.88		Estimated using ENR Construction Cost Index
541	361	18-inch VCP Sewer	1967 Project	1968	\$5,308.72		Estimated using ENR Construction Cost Index

**APPENDIX A - WASTEWATER SYSTEM  
ORIGINAL COST OF INVENTORY/ASSETS**

**ORGANIZED BY ACCOUNT NUMBER**

ITEM #	ACCOUNT	PROPERTY DESCRIPTION	CONTRACT NUMBER	YEAR	UNIT COST	ACCOUNT COST	COMMENTS
542	361	20-inch VCP Sewer	1967 Project	1968	\$7,373.16		Estimated using ENR Construction Cost Index
543	361	21-inch VCP Sewer	1967 Project	1968	\$34,619.77		Estimated using ENR Construction Cost Index
544	361	24-inch VCP Sewer	1967 Project	1968	\$32,817.43		Estimated using ENR Construction Cost Index
545	361	30-inch VCP Sewer	1967 Project	1968	\$7,274.75		Estimated using ENR Construction Cost Index
546	361	Manholes (Walls and Base)	1967 Project	1968	\$16,810.89		Estimated using ENR Construction Cost Index
547	361	Manhole Frame and Cover	1967 Project	1968	\$16,810.89		Estimated using ENR Construction Cost Index
548	361	Sewer Probe	Borough of Kane Original Cost of Inventory/Assets	2003	\$1,321.10		
549	361	0-8 Ft. Deep	Contract 2003-2 - General/Mechanical Construction	2004	\$34,276.00		
550	361	8-12 Ft. Deep	Contract 2003-2 - General/Mechanical Construction	2004	\$23,750.00		
551	361	Over 12 Ft.	Contract 2003-2 - General/Mechanical Construction	2004	\$1,120.00		
552	361	8" PVC Caps	Contract 2003-2 - General/Mechanical Construction	2004	\$60.00		
553	361	M.H. 0-6' Deep	Contract 2003-2 - General/Mechanical Construction	2004	\$25,200.00		
554	361	Manhole Barrel Over 6' VF	Contract 2003-2 - General/Mechanical Construction	2004	\$1,080.00		
555	361	Standard Manhole Frame & Covers	Contract 2003-2 - General/Mechanical Construction	2004	\$3,500.00		
556	361	Stainless Steel Inflow Protector	Contract 2003-2 - General/Mechanical Construction	2004	\$4,900.00		
557	361	Core Drill Manhole	Contract 2003-2 - General/Mechanical Construction	2004	\$500.00		

**APPENDIX A - WASTEWATER SYSTEM  
ORIGINAL COST OF INVENTORY/ASSETS**

**ORGANIZED BY ACCOUNT NUMBER**

ITEM #	ACCOUNT	PROPERTY DESCRIPTION	CONTRACT NUMBER	YEAR	UNIT COST	ACCOUNT COST	COMMENTS
558	361	Mobilization/Project Closeout	Contract 7-92 - Kinzua Road Interceptor Sewer	1994	\$7,000.00		
559	361	Select Backfill	Contract 7-92 - Kinzua Road Interceptor Sewer	1994	\$28,080.00		
560	361	PADOT Shoulder Restoration	Contract 7-92 - Kinzua Road Interceptor Sewer	1994	\$4,491.00		
561	361	Township Road Restoration	Contract 7-92 - Kinzua Road Interceptor Sewer	1994	\$2,525.00		
562	361	Change Order 3	Contract 7-92 - Kinzua Road Interceptor Sewer	1994	\$8,775.00		
563	361	Change Order 4	Contract 7-92 - Kinzua Road Interceptor Sewer	1995	\$825.00		
564	361	30-inch Sewer up to 5' deep	Contract 7-92 - Kinzua Road Interceptor Sewer	1994	\$5,250.00		
565	361	30-inch Sewer 5' to 7' deep	Contract 7-92 - Kinzua Road Interceptor Sewer	1994	\$16,200.00		
566	361	30-inch Sewer 7' to 9' deep	Contract 7-92 - Kinzua Road Interceptor Sewer	1994	\$173,082.00		
567	361	30-inch Sewer 9' to 11' deep	Contract 7-92 - Kinzua Road Interceptor Sewer	1994	\$68,040.00		
568	361	30-inch PVC Sewer 11' to 13' deep	Contract 7-92 - Kinzua Road Interceptor Sewer	1994	\$27,720.00		
569	361	30-inch PVC Sewer over 13' deep	Contract 7-92 - Kinzua Road Interceptor Sewer	1994	\$49,650.00		
570	361	30-inch DIP Encase, Stream Xing	Contract 7-92 - Kinzua Road Interceptor Sewer	1994	\$3,500.00		
571	361	30-inch sewer connections	Contract 7-92 - Kinzua Road Interceptor Sewer	1994	\$2,000.00		
572	361	Miscellaneous Concrete	Contract 7-92 - Kinzua Road Interceptor Sewer	1994	\$1,500.00		
573	361	5-foot Manholes, 5'-0" or less depth	Contract 7-92 - Kinzua Road Interceptor Sewer	1994	\$42,500.00		

**APPENDIX A - WASTEWATER SYSTEM  
 ORIGINAL COST OF INVENTORY/ASSETS**

**ORGANIZED BY ACCOUNT NUMBER**

ITEM #	ACCOUNT	PROPERTY DESCRIPTION	CONTRACT NUMBER	YEAR	UNIT COST	ACCOUNT COST	COMMENTS
574	361	Extra Depth Manholes over 5'-0"	Contract 7-92 - Kinzua Road Interceptor Sewer	1994	\$7,500.00		
575	361	PADOT Highway Crossing	Contract 7-92 - Kinzua Road Interceptor Sewer	1994	\$12,000.00		
576	361	Grout Road Bore (C.O. No. 1)	Contract 7-92 - Kinzua Road Interceptor Sewer	1994	\$4,800.00		
577	361	Exploratory Excavations	Contract 93-1 - West Kane Area Sewer	1995	\$200.00		
578	361	Special Backfill	Contract 93-1 - West Kane Area Sewer	1995	\$18,972.80		
579	361	Mobilization/Demobilization	Contract 93-1 - West Kane Area Sewer	1995	\$13,000.00		
580	361	Bituminous Pavement Trench Restoration	Contract 93-1 - West Kane Area Sewer	1995	\$9,769.73		
581	361	Change Order 1	Contract 93-1 - West Kane Area Sewer	1995	\$1,505.00		
582	361	a. 0-8 Ft Deep	Contract 93-1 - West Kane Area Sewer	1995	\$134,684.00		
583	361	b. 8-12 Ft. Deep	Contract 93-1 - West Kane Area Sewer	1995	\$49,680.00		
584	361	Manholes	Contract 93-1 - West Kane Area Sewer	1995	\$67,620.00		
585	361	Concrete Encasement	Contract 93-1 - West Kane Area Sewer	1995	\$720.00		
586	361	Concrete Thrust Blocks	Contract 93-1 - West Kane Area Sewer	1995	\$0.00		
587	361	Air Testing - Sewers	Contract 93-1 - West Kane Area Sewer	1995	\$4,138.00		
588	361	Hydrostatic Testing - FM	Contract 93-1 - West Kane Area Sewer	1995	\$1,330.50		
589	361	Vacuum Testing - MH	Contract 93-1 - West Kane Area Sewer	1995	\$4,100.00		

**APPENDIX A - WASTEWATER SYSTEM  
ORIGINAL COST OF INVENTORY/ASSETS**

**ORGANIZED BY ACCOUNT NUMBER**

ITEM #	ACCOUNT	PROPERTY DESCRIPTION	CONTRACT NUMBER	YEAR	UNIT COST	ACCOUNT COST	COMMENTS
590	361	Internal TV Inspection Sewers	Contract 93-1 - West Kane Area Sewer	1995	\$4,652.40		
591	361	Exploratory Excavation	Contract 93-2 - Route 66 Area Sewers	1996	\$100.00		
592	361	Special Backfill	Contract 93-2 - Route 66 Area Sewers	1996	\$27,528.00		
593	361	Mobilization/Demobilization	Contract 93-2 - Route 66 Area Sewers	1996	\$21,000.00		
594	361	Bituminous Pavement Trench Restoration	Contract 93-2 - Route 66 Area Sewers	1996	\$23,072.10		
595	361	0-8 Ft Deep	Contract 93-2 - Route 66 Area Sewers	1996	\$178,541.00		
596	361	8-12 Ft Deep	Contract 93-2 - Route 66 Area Sewers	1996	\$87,192.00		
597	361	12 - 16 Ft Deep	Contract 93-2 - Route 66 Area Sewers	1996	\$9,558.00		
598	361	12" Diameter Bore	Contract 93-2 - Route 66 Area Sewers	1996	\$7,200.00		
599	361	16" Diameter Bore	Contract 93-2 - Route 66 Area Sewers	1996	\$22,475.00		
600	361	Manholes	Contract 93-2 - Route 66 Area Sewers	1996	\$97,324.00		
601	361	Concrete Encasement	Contract 93-2 - Route 66 Area Sewers	1996	\$1,800.00		
602	361	Concrete Thrust Blocks	Contract 93-2 - Route 66 Area Sewers	1996	\$400.00		
603	361	Air Testing Sewer	Contract 93-2 - Route 66 Area Sewers	1996	\$6,827.75		
604	361	Hydrostatic Testing - FM	Contract 93-2 - Route 66 Area Sewers	1996	\$5,341.50		
605	361	Vacuum Test Manholes	Contract 93-2 - Route 66 Area Sewers	1996	\$6,000.00		

**APPENDIX A - WASTEWATER SYSTEM  
ORIGINAL COST OF INVENTORY/ASSETS**

**ORGANIZED BY ACCOUNT NUMBER**

ITEM #	ACCOUNT	PROPERTY DESCRIPTION	CONTRACT NUMBER	YEAR	UNIT COST	ACCOUNT COST	COMMENTS
606	361	Internal TV Inspection	Contract 93-2 - Route 66 Area Sewers	1996	\$7,261.50		
607	361	Manhole Frames and Covers	Contract 93-2 - Route 66 Area Sewers	1996	\$12,600.00		
608	361	Inflow Protectors	Contract 93-2 - Route 66 Area Sewers	1996	\$2,400.00		
609	361	Exploratory Excavation	Contract 93-3 - Westwind Area Sewers	1996	\$1,500.00		
610	361	Special Backfill	Contract 93-3 - Westwind Area Sewers	1996	\$43,828.48		
611	361	Mobilization/Demobilization	Contract 93-3 - Westwind Area Sewers	1996	\$9,917.40		
612	361	Bituminous Pavement Trench Restoration	Contract 93-3 - Westwind Area Sewers	1996	\$12,200.50		
613	361	Field Office	Contract 93-3 - Westwind Area Sewers	1996	\$6,500.00		
614	361	Bituminous Paving	Contract 93-3 - Westwind Area Sewers	1996	\$74,152.00		
615	361	Job Trailer Time Extension	Contract 93-3 - Westwind Area Sewers	1996	\$1,083.34		
616	361	0-8 Ft Deep	Contract 93-3 - Westwind Area Sewers	1996	\$268,037.50		
617	361	8-12 Ft Deep	Contract 93-3 - Westwind Area Sewers	1996	\$178,837.50		
618	361	12 - 16 Ft Deep	Contract 93-3 - Westwind Area Sewers	1996	\$33,962.50		
619	361	18" Diameter Bore	Contract 93-3 - Westwind Area Sewers	1996	\$45,400.00		
620	361	Manholes	Contract 93-3 - Westwind Area Sewers	1996	\$91,816.20		
621	361	Concrete Encasement	Contract 93-3 - Westwind Area Sewers	1996	\$5,000.00		

**APPENDIX A - WASTEWATER SYSTEM  
ORIGINAL COST OF INVENTORY/ASSETS**

**ORGANIZED BY ACCOUNT NUMBER**

ITEM #	ACCOUNT	PROPERTY DESCRIPTION	CONTRACT NUMBER	YEAR	UNIT COST	ACCOUNT COST	COMMENTS
622	361	Concrete Thrust Blocks	Contract 93-3 - Westwind Area Sewers	1996	\$200.00		
623	361	Air Testing Sewer	Contract 93-3 - Westwind Area Sewers	1996	\$4,525.40		
624	361	Hydrostatic Testing-FM	Contract 93-3 - Westwind Area Sewers	1996	\$1,150.50		
625	361	Vacuum Test Manholes	Contract 93-3 - Westwind Area Sewers	1996	\$4,450.00		
626	361	Internal TV Inspection	Contract 93-3 - Westwind Area Sewers	1996	\$7,697.60		
627	361	Manhole Frames and Covers	Contract 93-3 - Westwind Area Sewers	1996	\$23,140.00		
628	361	Inflow Protectors	Contract 93-3 - Westwind Area Sewers	1996	\$1,200.00		
629	361	Manhole Ring Adjustment	Contract 93-3 - Westwind Area Sewers	1996	\$3,250.00		
630	361	Exploratory Excavations	Contract 93-4 - East Kane Sewer	1995	\$800.00		
631	361	Special Backfill	Contract 93-4 - East Kane Sewer	1995	\$857.31		
632	361	Mobilization/Demobilization	Contract 93-4 - East Kane Sewer	1995	\$85,000.00		
633	361	Bituminous Pavement Trench Restoration	Contract 93-4 - East Kane Sewer	1995	\$19,200.00		
634	361	Furnish and Install (6) signs to locate Force Main	Contract 93-4 - East Kane Sewer	1995	\$900.00		
635	361	Dug up Bore Pit then backfilled it in	Contract 93-4 - East Kane Sewer	1995	\$1,740.06		
636	361	a. 0-8 Ft Deep	Contract 93-4 - East Kane Sewer	1995	\$341,469.90		
637	361	b. 8-12 Ft. Deep	Contract 93-4 - East Kane Sewer	1995	\$139,050.00		

**APPENDIX A - WASTEWATER SYSTEM  
ORIGINAL COST OF INVENTORY/ASSETS**

**ORGANIZED BY ACCOUNT NUMBER**

ITEM #	ACCOUNT	PROPERTY DESCRIPTION	CONTRACT NUMBER	YEAR	UNIT COST	ACCOUNT COST	COMMENTS
638	361	16" Diameter Steel Casing Boring	Contract 93-4 - East Kane Sewer	1995	\$132,300.00		
639	361	Manholes	Contract 93-4 - East Kane Sewer	1995	\$99,451.80		
640	361	Concrete Encasement	Contract 93-4 - East Kane Sewer	1995	\$37,050.00		
641	361	Concrete Thrust Blocks	Contract 93-4 - East Kane Sewer	1995	\$3,960.00		
642	361	Air Testing - Sewers	Contract 93-4 - East Kane Sewer	1995	\$1,881.13		
643	361	Hydrostatic Testing - FM	Contract 93-4 - East Kane Sewer	1995	\$2,710.50		
644	361	Vacuum Testing- MH	Contract 93-4 - East Kane Sewer	1995	\$102.00		
645	361	Internal TV Inspection Sewers	Contract 93-4 - East Kane Sewer	1995	\$8,711.15		
646	361	Manholes Frame & Covers	Contract 93-4 - East Kane Sewer	1995	\$25,250.00		
647	361	Inflow Protectors	Contract 93-4 - East Kane Sewer	1995	\$1,200.00		
648	361	Special Backfill	Contract 93-5 - Greendale Area Sewers	1996	\$4,086.00		
649	361	Air Testing Sewer	Contract 93-5 - Greendale Area Sewers	1996	\$2,208.40		
650	361	Mobilization/Demobilization	Contract 93-5 - Greendale Area Sewers	1996	\$16,000.00		
651	361	Bituminous Pavement Trench Restoration	Contract 93-5 - Greendale Area Sewers	1996	\$11,079.45		
652	361	0-8 Ft Deep	Contract 93-5 - Greendale Area Sewers	1996	\$315,169.00		
653	361	8-12 Ft Deep	Contract 93-5 - Greendale Area Sewers	1996	\$161,973.00		

**APPENDIX A - WASTEWATER SYSTEM  
ORIGINAL COST OF INVENTORY/ASSETS**

**ORGANIZED BY ACCOUNT NUMBER**

ITEM #	ACCOUNT	PROPERTY DESCRIPTION	CONTRACT NUMBER	YEAR	UNIT COST	ACCOUNT COST	COMMENTS
654	361	12 - 16 Ft Deep	Contract 93-5 - Greendale Area Sewers	1996	\$54,985.00		
655	361	Over 16 Ft Deep	Contract 93-5 - Greendale Area Sewers	1996	\$39,480.00		
656	361	16" Diameter Bore	Contract 93-5 - Greendale Area Sewers	1996	\$9,000.00		
657	361	18" Diameter Bore	Contract 93-5 - Greendale Area Sewers	1996	\$13,500.00		
658	361	Manholes	Contract 93-5 - Greendale Area Sewers	1996	\$96,279.15		
659	361	Concrete Encasement	Contract 93-5 - Greendale Area Sewers	1996	\$3,000.00		
660	361	Exploratory Excavation	Contract 93-5 - Greendale Area Sewers	1996	\$1,950.00		
661	361	Vacuum Test Manholes	Contract 93-5 - Greendale Area Sewers	1996	\$5,050.00		
662	361	Internal TV Inspection	Contract 93-5 - Greendale Area Sewers	1996	\$22,260.00		
663	361	Manhole Frames and Covers	Contract 93-5 - Greendale Area Sewers	1996	\$26,500.00		
664	361	Inflow Protectors	Contract 93-5 - Greendale Area Sewers	1996	\$840.00		
665	361	Exploratory Excavations	Contract 93-6 - Northwest Area Sewers	1995	\$300.00		
666	361	Special Backfill	Contract 93-6 - Northwest Area Sewers	1995	\$10,630.80		
667	361	Mobilization/Demobilization	Contract 93-6 - Northwest Area Sewers	1995	\$3,000.00		
668	361	Bituminous Pavement Trench Restoration	Contract 93-6 - Northwest Area Sewers	1995	\$2,280.00		
669	361	0-8 Ft Deep	Contract 93-6 - Northwest Area Sewers	1995	\$20,016.00		

**APPENDIX A - WASTEWATER SYSTEM  
ORIGINAL COST OF INVENTORY/ASSETS**

**ORGANIZED BY ACCOUNT NUMBER**

ITEM #	ACCOUNT	PROPERTY DESCRIPTION	CONTRACT NUMBER	YEAR	UNIT COST	ACCOUNT COST	COMMENTS
670	361	8-12 Ft. Deep	Contract 93-6 - Northwest Area Sewers	1995	\$54,483.00		
671	361	12-16 Ft. Deep	Contract 93-6 - Northwest Area Sewers	1995	\$46,942.00		
672	361	12" Diameter Boring	Contract 93-6 - Northwest Area Sewers	1995	\$5,100.00		
673	361	16" Diameter Boring	Contract 93-6 - Northwest Area Sewers	1995	\$18,000.00		
674	361	Manholes	Contract 93-6 - Northwest Area Sewers	1995	\$57,504.60		
675	361	Concrete Encasement	Contract 93-6 - Northwest Area Sewers	1995	\$700.00		
676	361	Concrete Thrust Blocks	Contract 93-6 - Northwest Area Sewers	1995	\$270.00		
677	361	Air Testing - Sewers	Contract 93-6 - Northwest Area Sewers	1995	\$2,508.05		
678	361	Hydrostatic Testing - FM	Contract 93-6 - Northwest Area Sewers	1995	\$2,692.00		
679	361	Vacuum Testing- MH	Contract 93-6 - Northwest Area Sewers	1995	\$2,480.00		
680	361	Internal TV Inspection Sewers	Contract 93-6 - Northwest Area Sewers	1995	\$3,640.50		
681	361	Manholes Frame & Covers	Contract 93-6 - Northwest Area Sewers	1995	\$5,800.00		
682	361	Inflow Protectors	Contract 93-6 - Northwest Area Sewers	1995	\$1,200.00		
683	361	18" PVC Sewer Pipe	West Run Interceptor Project	2001	\$72,568.33		
684	361	24" PVC Sewer Pipe	West Run Interceptor Project	2001	\$123,106.99		
685	361	306" PVC Sewer Pipe	West Run Interceptor Project	2001	\$76,455.92		

**APPENDIX A - WASTEWATER SYSTEM  
ORIGINAL COST OF INVENTORY/ASSETS**

**ORGANIZED BY ACCOUNT NUMBER**

ITEM #	ACCOUNT	PROPERTY DESCRIPTION	CONTRACT NUMBER	YEAR	UNIT COST	ACCOUNT COST	COMMENTS
686	361	Manholes	West Run Interceptor Project	2001	\$21,600.00		
687	361	Northwest Project		2007	\$500.00		
688	361	Sewer line replacement (Hospital)		2013	\$25,496.32		
689	361	Sewer line replacement (Park Ave)		2013	\$17,224.58		
690	361	Sewer line extension (Birch and Elk)		2013	\$7,974.80		
691	361	Sewer Line Shady Point		1998	\$14,800.55		
692	361	Sewer Line exten		1999	\$10,503.00		
693	361	Holman St.-Sanitary Sewer Prj.		2002	\$36,577.50		
694	361	Highland Ave. Sewer Line		2003	\$7,500.00		
695	361	North Fraley Street Project		2009	\$5,568.41		
696	361	Wilson Run Project		2012	\$28,919.97		
697	361	Sewer Manhole		2016	\$10,819.18		
<b>SUB-TOTAL =</b>						<b>\$5,587,425.86</b>	

**363 - Services to Customers**

698	363	6" PVC Service Sewer	Contract 2003-2 - General/Mechanical Construction	2004	\$660.00		
699	363	8" x 6" PVC Wye	Contract 2003-2 - General/Mechanical Construction	2004	\$25.00		
700	363	Service Connections	Contract 93-1 - West Kane Area Sewer	1995	\$3,225.00		

**APPENDIX A - WASTEWATER SYSTEM  
ORIGINAL COST OF INVENTORY/ASSETS**

**ORGANIZED BY ACCOUNT NUMBER**

ITEM #	ACCOUNT	PROPERTY DESCRIPTION	CONTRACT NUMBER	YEAR	UNIT COST	ACCOUNT COST	COMMENTS
701	363	6" Diameter Service Sewer	Contract 93-1 - West Kane Area Sewer	1995	\$22,106.50		
702	363	Sewer Connections	Contract 93-2 - Route 66 Area Sewers	1996	\$6,600.00		
703	363	6" Diameter Service Sewer	Contract 93-2 - Route 66 Area Sewers	1996	\$29,507.00		
704	363	Service Connections	Contract 93-3 - Westwind Area Sewers	1996	\$5,700.00		
705	363	6" Diameter Service Sewer	Contract 93-3 - Westwind Area Sewers	1996	\$70,965.00		
706	363	Service Connections	Contract 93-4 - East Kane Sewer	1995	\$1,925.00		
707	363	6" Diameter Service Sewer	Contract 93-4 - East Kane Sewer	1995	\$27,750.00		
708	363	Sewer Connections	Contract 93-5 - Greendale Area Sewers	1996	\$4,440.00		
709	363	6" Diameter Service Sewer	Contract 93-5 - Greendale Area Sewers	1996	\$36,150.00		
710	363	Service Connections	Contract 93-6 - Northwest Area Sewers	1995	\$2,080.00		
711	363	6" Diameter Service Sewer	Contract 93-6 - Northwest Area Sewers	1995	\$7,476.00		
<b>SUB-TOTAL =</b>						<b>\$218,609.50</b>	

**364 - Flow Measuring Devices**

712	364	Greyline SLT 5.0 Flow Meter - Kinzua	Borough of Kane Original Cost of Inventory/Assets	2016	\$2,651.02		
713	364	Flowmeters (2)		1996	\$9,125.00		
714	364	Flowmeters (2)		1998	\$9,853.53		
715	364	3 Pen Chart recorder		2011	\$3,692.00		
<b>SUB-TOTAL =</b>						<b>\$25,321.55</b>	

**APPENDIX A - WASTEWATER SYSTEM  
ORIGINAL COST OF INVENTORY/ASSETS**

**ORGANIZED BY ACCOUNT NUMBER**

ITEM #	ACCOUNT	PROPERTY DESCRIPTION	CONTRACT NUMBER	YEAR	UNIT COST	ACCOUNT COST	COMMENTS
<b>371 - Pumping Equipment</b>							
716	371	Allegheny Power	Allegheny Power		\$ 22,044.03		
717	371	2 Flanged Check Valve Levers - Rt 66 Pump	Borough of Kane Original Cost of Inventory/Assets	2015	\$5,078.11		
718	371	Pump Rebuild - West Kane Pump Station	Borough of Kane Original Cost of Inventory/Assets	2015	\$4,135.70		
719	371	Rebuilt Pump	Borough of Kane Original Cost of Inventory/Assets	2015	\$772.23		
720	371	Amp Soft Start - Wilson Run	Borough of Kane Original Cost of Inventory/Assets	2015	\$3,438.85		
721	371	IntraLink LC150 Lift Components Wilson Run	Borough of Kane Original Cost of Inventory/Assets	2016	\$7,412.98		
722	371	Pump Station	Contract 2003-2 - General/Mechanical Construction	2004	\$98,500.00		
723	371	Change Order No. 1	Contract 93-7 - Change Orders	1996	-\$21,000.00		
724	371	Change Order No. 2	Contract 93-7 - Change Orders	1996	\$1,872.00		
725	371	Change Order No. 3	Contract 93-7 - Change Orders	1996	\$6,600.00		
726	371	Change Order No. 4	Contract 93-7 - Change Orders	1996	\$1,833.00		
727	371	Change Order No. 5	Contract 93-7 - Change Orders	1996	\$2,090.40		
728	371	Mobilization, Bonds, and Ins	Contract 93-7 - East Kane Pump Station	1996	\$2,000.00		
729	371	Clear and Grub	Contract 93-7 - East Kane Pump Station	1996	\$800.00		
730	371	Grade and Seed	Contract 93-7 - East Kane Pump Station	1996	\$1,530.00		

**APPENDIX A - WASTEWATER SYSTEM  
ORIGINAL COST OF INVENTORY/ASSETS**

**ORGANIZED BY ACCOUNT NUMBER**

ITEM #	ACCOUNT	PROPERTY DESCRIPTION	CONTRACT NUMBER	YEAR	UNIT COST	ACCOUNT COST	COMMENTS
731	371	Access Road and Parking Area	Contract 93-7 - East Kane Pump Station	1996	\$3,350.00		
732	371	Chain Link Fence	Contract 93-7 - East Kane Pump Station	1996	\$4,400.00		
733	371	Electrical	Contract 93-7 - East Kane Pump Station	1996	\$9,656.00		
734	371	Precast Structures Complete	Contract 93-7 - East Kane Pump Station	1996	\$29,283.00		
735	371	Trash Basket	Contract 93-7 - East Kane Pump Station	1996	\$1,200.00		
736	371	Sewage Pumps and Controls	Contract 93-7 - East Kane Pump Station	1996	\$44,985.00		
737	371	Piping Complete	Contract 93-7 - East Kane Pump Station	1996	\$13,622.00		
738	371	Mobilization, Bonds, and Ins	Contract 93-7 - Northwest Pump Station	1996	\$2,000.00		
739	371	Clear and Grub	Contract 93-7 - Northwest Pump Station	1996	\$1,200.00		
740	371	Grade and Seed	Contract 93-7 - Northwest Pump Station	1996	\$1,655.00		
741	371	Access Road and Parking Area	Contract 93-7 - Northwest Pump Station	1996	\$5,900.00		
742	371	Chain Link Fence	Contract 93-7 - Northwest Pump Station	1996	\$4,575.00		
743	371	Electrical	Contract 93-7 - Northwest Pump Station	1996	\$9,660.00		
744	371	Precast Structures Complete	Contract 93-7 - Northwest Pump Station	1996	\$27,308.00		
745	371	Trash Basket	Contract 93-7 - Northwest Pump Station	1996	\$1,200.00		
746	371	Sewage Pumps and Controls	Contract 93-7 - Northwest Pump Station	1996	\$45,062.00		

**APPENDIX A - WASTEWATER SYSTEM  
ORIGINAL COST OF INVENTORY/ASSETS**

**ORGANIZED BY ACCOUNT NUMBER**

ITEM #	ACCOUNT	PROPERTY DESCRIPTION	CONTRACT NUMBER	YEAR	UNIT COST	ACCOUNT COST	COMMENTS
747	371	Piping Complete	Contract 93-7 - Northwest Pump Station	1996	\$13,775.00		
748	371	Mobilization, Bonds, and Ins	Contract 93-7 - Route 66 Pump Station	1996	\$2,000.00		
749	371	Clear and Grub	Contract 93-7 - Route 66 Pump Station	1996	\$1,200.00		
750	371	Grade and Seed	Contract 93-7 - Route 66 Pump Station	1996	\$2,390.00		
751	371	Access Road and Parking Area	Contract 93-7 - Route 66 Pump Station	1996	\$5,800.00		
752	371	Chain Link Fence	Contract 93-7 - Route 66 Pump Station	1996	\$3,750.00		
753	371	Electrical	Contract 93-7 - Route 66 Pump Station	1996	\$9,660.00		
754	371	Precast Structures Complete	Contract 93-7 - Route 66 Pump Station	1996	\$33,699.00		
755	371	Comminutor	Contract 93-7 - Route 66 Pump Station	1996	\$15,686.00		
756	371	Sewage Pumps and Controls	Contract 93-7 - Route 66 Pump Station	1996	\$45,002.00		
757	371	Piping Complete	Contract 93-7 - Route 66 Pump Station	1996	\$14,180.00		
758	371	Mobilization, Bonds, and Ins	Contract 93-7 - West Run Pump Station	1996	\$2,000.00		
759	371	Clear and Grub	Contract 93-7 - West Run Pump Station	1996	\$1,200.00		
760	371	Grade and Seed	Contract 93-7 - West Run Pump Station	1996	\$2,656.00		
761	371	Access Road and Parking Area	Contract 93-7 - West Run Pump Station	1996	\$3,630.00		
762	371	Chain Link Fence	Contract 93-7 - West Run Pump Station	1996	\$3,400.00		

**APPENDIX A - WASTEWATER SYSTEM  
ORIGINAL COST OF INVENTORY/ASSETS**

**ORGANIZED BY ACCOUNT NUMBER**

ITEM #	ACCOUNT	PROPERTY DESCRIPTION	CONTRACT NUMBER	YEAR	UNIT COST	ACCOUNT COST	COMMENTS
763	371	Electrical	Contract 93-7 - West Run Pump Station	1996	\$9,740.00		
764	371	Precast Structures Complete	Contract 93-7 - West Run Pump Station	1996	\$31,969.00		
765	371	Trash Basket	Contract 93-7 - West Run Pump Station	1996	\$1,445.00		
766	371	Sewage Pumps and Controls	Contract 93-7 - West Run Pump Station	1996	\$43,160.00		
767	371	Piping Complete	Contract 93-7 - West Run Pump Station	1996	\$9,240.00		
768	371	Mobilization, Bonds, and Ins	Contract 93-7 - Westwind Pump Station	1996	\$2,000.00		
769	371	Clear and Grub	Contract 93-7 - Westwind Pump Station	1996	\$800.00		
770	371	Grade and Seed	Contract 93-7 - Westwind Pump Station	1996	\$1,450.00		
771	371	Access Road and Parking Area	Contract 93-7 - Westwind Pump Station	1996	\$2,750.00		
772	371	Chain Link Fence	Contract 93-7 - Westwind Pump Station	1996	\$3,575.00		
773	371	Electrical	Contract 93-7 - Westwind Pump Station	1996	\$9,660.00		
774	371	Precast Structures Complete	Contract 93-7 - Westwind Pump Station	1996	\$24,060.00		
775	371	Trash Basket	Contract 93-7 - Westwind Pump Station	1996	\$1,445.00		
776	371	Sewage Pumps and Controls	Contract 93-7 - Westwind Pump Station	1996	\$44,210.00		
777	371	Piping Complete	Contract 93-7 - Westwind Pump Station	1996	\$10,285.00		
778	371	Mobilization, Bonds, and Ins	Contract 93-7 - Wilson Run Pump Station	1996	\$2,000.00		

**APPENDIX A - WASTEWATER SYSTEM  
ORIGINAL COST OF INVENTORY/ASSETS**

**ORGANIZED BY ACCOUNT NUMBER**

ITEM #	ACCOUNT	PROPERTY DESCRIPTION	CONTRACT NUMBER	YEAR	UNIT COST	ACCOUNT COST	COMMENTS
779	371	Clear and Grub	Contract 93-7 - Wilson Run Pump Station	1996	\$1,200.00		
780	371	Grade and Seed	Contract 93-7 - Wilson Run Pump Station	1996	\$3,155.00		
781	371	Access Road and Parking Area	Contract 93-7 - Wilson Run Pump Station	1996	\$4,850.00		
782	371	Chain Link Fence	Contract 93-7 - Wilson Run Pump Station	1996	\$3,400.00		
783	371	Electrical	Contract 93-7 - Wilson Run Pump Station	1996	\$9,792.00		
784	371	Precast Structures Complete	Contract 93-7 - Wilson Run Pump Station	1996	\$29,965.00		
785	371	Comminutor	Contract 93-7 - Wilson Run Pump Station	1996	\$15,686.00		
786	371	Sewage Pumps and Controls	Contract 93-7 - Wilson Run Pump Station	1996	\$44,910.00		
787	371	Piping Complete	Contract 93-7 - Wilson Run Pump Station	1996	\$14,189.00		
788	371	Pump Station - Wilson Run (Allied Systems)		2012	\$3,062.68		
789	371	Upgrade Lift & Rigg (Atlantic Eastern)		2012	\$5,237.61		
790	371	Check Valves - Wilson Run (Allied Systems)		2013	\$4,401.49		
791	371	Sludge Pumps		1997	\$4,452.93		
792	371	Trombold Equip		2001	\$26,099.75		
793	371	Trombold Equipment		2002	\$1,482.56		
794	371	Submersible Pump		2004	\$4,200.00		

**APPENDIX A - WASTEWATER SYSTEM  
 ORIGINAL COST OF INVENTORY/ASSETS**

**ORGANIZED BY ACCOUNT NUMBER**

ITEM #	ACCOUNT	PROPERTY DESCRIPTION	CONTRACT NUMBER	YEAR	UNIT COST	ACCOUNT COST	COMMENTS
795	371	Vertical Turbine Pump		2006	\$11,079.80		
796	371	ABS pump		2006	\$4,200.00		
797	371	Wilson Run Pump (Kappe Associates)		2012	\$9,000.00		
798	371	Control Unit & Interface Module - Wilson Run		2015	\$3,893.50		
799	371	Horse Power Pump		2015	\$6,325.00		
800	371	Sluice Pump		2015	\$10,200.00		
801	371	ABS/Sluizer Pump		2015	\$10,200.00		
802	371	Pump Station-Jo Jo Road		2002	\$6,417.89		
803	371	Willson Run Pump (Atlantic Eastern)		2012	\$2,281.95		
804	371	Wilson Run Pump (Kane Lawn & Garden)		2012	\$2,138.60		
<b>SUB-TOTAL =</b>						<b>\$941,801.06</b>	

**380 - Treatment and Disposal Equipment**

805	380	Pine St WWTP	1967 Project	1968	\$116,413.00		There were 7 structures at each plant, of which 4 remain or were repurposed. Percent of original value remaining is 57%. Residual is then 57% of \$203,723.
806	380	Kinzua Rd. WWTP	1967 Project	1968	\$116,413.00		There were 7 structures at each plant, of which 4 remain or were repurposed. Percent of original value remaining is 57%. Residual is then 57% of \$203,724.
807	380	Membrane Disc	Borough of Kane Original Cost of Inventory/Assets	2003	\$4,517.00		
808	380	Submersible Pump	Borough of Kane Original Cost of Inventory/Assets	2004	\$2,700.00		
809	380	Membrane Discs	Borough of Kane Original Cost of Inventory/Assets	2004	\$3,600.00		

**APPENDIX A - WASTEWATER SYSTEM  
ORIGINAL COST OF INVENTORY/ASSETS**

**ORGANIZED BY ACCOUNT NUMBER**

ITEM #	ACCOUNT	PROPERTY DESCRIPTION	CONTRACT NUMBER	YEAR	UNIT COST	ACCOUNT COST	COMMENTS
810	380	Transducer Unit	Borough of Kane Original Cost of Inventory/Assets	2009	\$5,084.75		
811	380	Fiberglass Specialties (weir plates/scum baffles) (Chlorine Contact Tank)	Contract 1-92 - Pine Street WWTP (General/Mechanical)	1995-96	\$1,100.00		
812	380	Install Temp Chlorine Contact Tank (Existing Digester Tank)	Contract 1-92 - Pine Street WWTP (General/Mechanical)	1995-96	\$6,000.00		
813	380	Remove Clarifier Equipment	Contract 1-92 - Pine Street WWTP (General/Mechanical)	1995-96	\$1,960.00		
814	380	Remove Floating Cover, Heat Exchanger, Sludge Recirc., Pumps, Gas Burner	Contract 1-92 - Pine Street WWTP (General/Mechanical)	1995-96	\$8,167.00		
815	380	Remove Pumps, Heat Exchanger, Boiler Equip. from Control Building	Contract 1-92 - Pine Street WWTP (General/Mechanical)	1995-96	\$980.00		
816	380	Remove Primary Clarifier Equip	Contract 1-92 - Pine Street WWTP (General/Mechanical)	1995-96	\$1,634.00		
817	380	Remove Trickling Filter Equip	Contract 1-92 - Pine Street WWTP (General/Mechanical)	1995-96	\$1,960.00		
818	380	Remove Chlorine Contact Equip	Contract 1-92 - Pine Street WWTP (General/Mechanical)	1995-96	\$4,138.00		
819	380	Mech. Cleaned Bar Screen	Contract 1-92 - Pine Street WWTP (General/Mechanical)	1995-96	\$42,250.00		
820	380	Circ. Grit Removal Unit	Contract 1-92 - Pine Street WWTP (General/Mechanical)	1995-96	\$67,180.00		
821	380	Sequential Batch Reactors	Contract 1-92 - Pine Street WWTP (General/Mechanical)	1995-96	\$554,245.00		
822	380	Positive Displacement Pumps	Contract 1-92 - Pine Street WWTP (General/Mechanical)	1995-96	\$27,750.00		
823	380	Vert. Lineshaft Cent. Pumps	Contract 1-92 - Pine Street WWTP (General/Mechanical)	1995-96	\$35,300.00		
824	380	Submersible Pumps	Contract 1-92 - Pine Street WWTP (General/Mechanical)	1995-96	\$15,600.00		
825	380	Grinder Pumps	Contract 1-92 - Pine Street WWTP (General/Mechanical)	1995-96	\$8,550.00		

**APPENDIX A - WASTEWATER SYSTEM  
ORIGINAL COST OF INVENTORY/ASSETS**

**ORGANIZED BY ACCOUNT NUMBER**

ITEM #	ACCOUNT	PROPERTY DESCRIPTION	CONTRACT NUMBER	YEAR	UNIT COST	ACCOUNT COST	COMMENTS
826	380	Positive Displacement Blowers	Contract 1-92 - Pine Street WWTP (General/Mechanical)	1995-96	\$34,800.00		
827	380	Air Diffuser System	Contract 1-92 - Pine Street WWTP (General/Mechanical)	1995-96	\$30,235.00		
828	380	Chlorine System	Contract 1-92 - Pine Street WWTP (General/Mechanical)	1995-96	\$12,200.00		
829	380	Sampler	Contract 1-92 - Pine Street WWTP (General/Mechanical)	1995-96	\$4,670.00		
830	380	Sluice Gates	Contract 1-92 - Pine Street WWTP (General/Mechanical)	1995-96	\$14,460.00		
831	380	Air Flor Monitoring Equip.	Contract 1-92 - Pine Street WWTP (General/Mechanical)	1995-96	\$12,400.00		
832	380	Panel PP3	Contract 2-92 - Pine Street WWTP (Electrical)	1995-96	\$2,500.00		
833	380	Panel PP1	Contract 2-92 - Pine Street WWTP (Electrical)	1995-96	\$2,500.00		
834	380	Panel PP2	Contract 2-92 - Pine Street WWTP (Electrical)	1995-96	\$2,500.00		
835	380	Effluent Water Pump Control Pl	Contract 2-92 - Pine Street WWTP (Electrical)	1995-96	\$15,000.00		
836	380	Blower Panel	Contract 2-92 - Pine Street WWTP (Electrical)	1995-96	\$4,000.00		
837	380	Telephone Dialer PL	Contract 2-92 - Pine Street WWTP (Electrical)	1995-96	\$3,696.00		
838	380	Chart Recorder	Contract 2-92 - Pine Street WWTP (Electrical)	1995-96	\$3,000.00		
839	380	Magnetic Flowmeter	Contract 2-92 - Pine Street WWTP (Electrical)	1995-96	\$12,000.00		
840	380	Ultrasonic Flowmeter	Contract 2-92 - Pine Street WWTP (Electrical)	1995-96	\$4,000.00		
841	380	PH Sensor	Contract 2-92 - Pine Street WWTP (Electrical)	1995-96	\$4,000.00		

**APPENDIX A - WASTEWATER SYSTEM  
ORIGINAL COST OF INVENTORY/ASSETS**

**ORGANIZED BY ACCOUNT NUMBER**

ITEM #	ACCOUNT	PROPERTY DESCRIPTION	CONTRACT NUMBER	YEAR	UNIT COST	ACCOUNT COST	COMMENTS
842	380	Fiberglass Weirs & Baffles (Chlorine Contact Tank)	Contract 4-92 - Kinzua Wastewater Treatment Plant General/Mechanical	1995-96	\$4,000.00		
843	380	Mechanical Bar Screen Mat.	Contract 4-92 - Kinzua Wastewater Treatment Plant General/Mechanical	1995-96	\$37,700.00		
844	380	Mechanical Bar Screen Install	Contract 4-92 - Kinzua Wastewater Treatment Plant General/Mechanical	1995-96	\$6,700.00		
845	380	Circ. Grit Removal Unit Mat.	Contract 4-92 - Kinzua Wastewater Treatment Plant General/Mechanical	1995-96	\$59,205.00		
846	380	Circ. Grit Removal Unit Install	Contract 4-92 - Kinzua Wastewater Treatment Plant General/Mechanical	1995-96	\$13,995.00		
847	380	Septage Acceptance Unit - Mat	Contract 4-92 - Kinzua Wastewater Treatment Plant General/Mechanical	1995-96	\$63,949.00		
848	380	Septage Acceptance Unit - Install	Contract 4-92 - Kinzua Wastewater Treatment Plant General/Mechanical	1995-96	\$10,251.00		
849	380	Sequential Batch Reactor - Mat.	Contract 4-92 - Kinzua Wastewater Treatment Plant General/Mechanical	1995-96	\$492,958.00		
850	380	Sequential Batch Reactor - Install.	Contract 4-92 - Kinzua Wastewater Treatment Plant General/Mechanical	1995-96	\$69,000.00		
851	380	Positive Displacement Pump-Mat.	Contract 4-92 - Kinzua Wastewater Treatment Plant General/Mechanical	1995-96	\$73,125.00		
852	380	Positive Displacement Pump-Install	Contract 4-92 - Kinzua Wastewater Treatment Plant General/Mechanical	1995-96	\$12,375.00		
853	380	Vert. Lineshaft Center Pumps - Mat.	Contract 4-92 - Kinzua Wastewater Treatment Plant General/Mechanical	1995-96	\$30,200.00		
854	380	Vert. Lineshaft Center Pumps - Install	Contract 4-92 - Kinzua Wastewater Treatment Plant General/Mechanical	1995-96	\$5,800.00		
855	380	Submersible Pump - Mat.	Contract 4-92 - Kinzua Wastewater Treatment Plant General/Mechanical	1995-96	\$21,824.00		
856	380	Submersible Pump - Install	Contract 4-92 - Kinzua Wastewater Treatment Plant General/Mechanical	1995-96	\$5,376.00		
857	380	Grinder Pumps - Mat.	Contract 4-92 - Kinzua Wastewater Treatment Plant General/Mechanical	1995-96	\$7,055.00		

**APPENDIX A - WASTEWATER SYSTEM  
 ORIGINAL COST OF INVENTORY/ASSETS**

**ORGANIZED BY ACCOUNT NUMBER**

ITEM #	ACCOUNT	PROPERTY DESCRIPTION	CONTRACT NUMBER	YEAR	UNIT COST	ACCOUNT COST	COMMENTS
858	380	Grinder Pumps - Install	Contract 4-92 - Kinzua Wastewater Treatment Plant General/Mechanical	1995-96	\$4,245.00		
859	380	Belt Filter Press - Mat.	Contract 4-92 - Kinzua Wastewater Treatment Plant General/Mechanical	1995-96	\$162,717.00		
860	380	Belt Filter Press - Install	Contract 4-92 - Kinzua Wastewater Treatment Plant General/Mechanical	1995-96	\$25,083.00		
861	380	Belt Conveyors - Mat.	Contract 4-92 - Kinzua Wastewater Treatment Plant General/Mechanical	1995-96	\$23,719.00		
862	380	Belt Conveyors - Install	Contract 4-92 - Kinzua Wastewater Treatment Plant General/Mechanical	1995-96	\$5,981.00		
863	380	Positive Displacement Blower - Mat.	Contract 4-92 - Kinzua Wastewater Treatment Plant General/Mechanical	1995-96	\$36,040.00		
864	380	Positive Displacement Blower - Install	Contract 4-92 - Kinzua Wastewater Treatment Plant General/Mechanical	1995-96	\$6,460.00		
865	380	Chemical Dry Feeders - mat.	Contract 4-92 - Kinzua Wastewater Treatment Plant General/Mechanical	1995-96	\$12,500.00		
866	380	Chemical Dry Feeders - Install	Contract 4-92 - Kinzua Wastewater Treatment Plant General/Mechanical	1995-96	\$2,500.00		
867	380	Air Diffusers System - Mat.	Contract 4-92 - Kinzua Wastewater Treatment Plant General/Mechanical	1995-96	\$23,000.00		
868	380	Air Diffusers System - Install	Contract 4-92 - Kinzua Wastewater Treatment Plant General/Mechanical	1995-96	\$13,800.00		
869	380	Polymer Feed System - Mat.	Contract 4-92 - Kinzua Wastewater Treatment Plant General/Mechanical	1995-96	\$15,200.00		
870	380	Polymer Feed System - Install	Contract 4-92 - Kinzua Wastewater Treatment Plant General/Mechanical	1995-96	\$3,800.00		
871	380	Chlorination System - Mat.	Contract 4-92 - Kinzua Wastewater Treatment Plant General/Mechanical	1995-96	\$19,563.00		
872	380	Chlorination System - Install	Contract 4-92 - Kinzua Wastewater Treatment Plant General/Mechanical	1995-96	\$4,837.00		
873	380	Samplers - Mat.	Contract 4-92 - Kinzua Wastewater Treatment Plant General/Mechanical	1995-96	\$3,750.00		

**APPENDIX A - WASTEWATER SYSTEM  
 ORIGINAL COST OF INVENTORY/ASSETS**

**ORGANIZED BY ACCOUNT NUMBER**

ITEM #	ACCOUNT	PROPERTY DESCRIPTION	CONTRACT NUMBER	YEAR	UNIT COST	ACCOUNT COST	COMMENTS
874	380	Samplers - Install	Contract 4-92 - Kinzua Wastewater Treatment Plant General/Mechanical	1995-96	\$750.00		
875	380	Sluice Gates - Mat.	Contract 4-92 - Kinzua Wastewater Treatment Plant General/Mechanical	1995-96	\$11,900.00		
876	380	Sluice Gates - Install	Contract 4-92 - Kinzua Wastewater Treatment Plant General/Mechanical	1995-96	\$1,900.00		
877	380	Panel PP1	Contract 5-92 - Kinzua Wastewater Treatment Plant (Electrical)	1995-96	\$2,500.00		
878	380	Panel PP2	Contract 5-92 - Kinzua Wastewater Treatment Plant (Electrical)	1995-96	\$2,500.00		
879	380	Panel PP3	Contract 5-92 - Kinzua Wastewater Treatment Plant (Electrical)	1995-96	\$2,500.00		
880	380	Effluent Water Pump Control PL	Contract 5-92 - Kinzua Wastewater Treatment Plant (Electrical)	1995-96	\$10,000.00		
881	380	Blower Control PL	Contract 5-92 - Kinzua Wastewater Treatment Plant (Electrical)	1995-96	\$4,000.00		
882	380	Line Water Control Panel	Contract 5-92 - Kinzua Wastewater Treatment Plant (Electrical)	1995-96	\$2,000.00		
883	380	WAS Remote Panel	Contract 5-92 - Kinzua Wastewater Treatment Plant (Electrical)	1995-96	\$3,000.00		
884	380	Telephone Dialer	Contract 5-92 - Kinzua Wastewater Treatment Plant (Electrical)	1995-96	\$3,000.00		
885	380	Chart Recorder	Contract 5-92 - Kinzua Wastewater Treatment Plant (Electrical)	1995-96	\$3,000.00		
886	380	Magnetic Flowmeter	Contract 5-92 - Kinzua Wastewater Treatment Plant (Electrical)	1995-96	\$9,000.00		
887	380	Ultrasonic Flowmeter	Contract 5-92 - Kinzua Wastewater Treatment Plant (Electrical)	1995-96	\$4,000.00		
888	380	PH Sensor	Contract 5-92 - Kinzua Wastewater Treatment Plant (Electrical)	1995-96	\$3,000.00		
889	380	Hand Scanner		1995	\$186.00		

**APPENDIX A - WASTEWATER SYSTEM  
ORIGINAL COST OF INVENTORY/ASSETS**

**ORGANIZED BY ACCOUNT NUMBER**

ITEM #	ACCOUNT	PROPERTY DESCRIPTION	CONTRACT NUMBER	YEAR	UNIT COST	ACCOUNT COST	COMMENTS
890	380	Vacuum Truck		1995	\$146,700.00		
891	380	Air Smoke Machine		1999	\$1,809.07		
892	380	BNR Inc.		2001	\$39,180.00		
893	380	U.S. Filter		2002	\$69,580.00		
894	380	Grit Concentrator		2013	\$4,247.00		
895	380	(2) Gas Chlorinators		2014	\$5,383.67		
896	380	Actuator		2016	\$4,322.78		
897	380	Pitsa Grit 250GPM Concentrator		2016	\$4,247.00		
898	380	Actuator		2017	\$4,574.00		
899	380	Controller		2017	\$2,357.10		
900	380	Pine Street Plant (Allied Systems)		2015	\$54,465.52		
901	380	Pine Street Plant (SE Dyne)		2015	\$1,806.88		Replace air lines to SBRs (4)
902	380	Pine Street Plant (SE Dyne)		2015	\$12,945.00		Replace air lines to SBRs (4)
903	380	Pine Street Plant (SE Dyne)		2015	\$446.66		Replace air lines to SBRs (4)
904	380	WWTP Dechlor. Proj.		2002	\$17,723.35		
905	380	8" valve - Pine St. Plant		2004	\$3,332.72		

**APPENDIX A - WASTEWATER SYSTEM  
ORIGINAL COST OF INVENTORY/ASSETS**

**ORGANIZED BY ACCOUNT NUMBER**

ITEM #	ACCOUNT	PROPERTY DESCRIPTION	CONTRACT NUMBER	YEAR	UNIT COST	ACCOUNT COST	COMMENTS
906	380	Air Line Project		2012	\$55,294.49		Replace air lines to SBRs (4)
907	380	Actuator & Interface Cards		2016	\$13,324.25		
908	380	Root Blower (Pine St. WWTP)		2018	\$ 8,500.00		
909	380	Area Velocity Analyzer and Logger (Pine St. WWTP)		2018	\$ 4,172.92		
910	380	Area Velocity Probe and Appurtenances (Pine St. WWTP)		2018	\$ 1,729.51		
<b>SUB-TOTAL =</b>						<b>\$3,003,588.67</b>	

**381 - Plant Sewers**

911	381	Lever & Weight Swing Check Valve - Kinzua	Borough of Kane Original Cost of Inventory/Assets	2016	\$3,779.83		
912	381	Manholes/Vaults	Contract 1-92 - Pine Street WWTP (General/Mechanical)	1995-96	\$28,600.00		
913	381	Manholes	Contract 1-92 - Pine Street WWTP (General/Mechanical)	1995-96	\$24,750.00		
914	381	Gas Piping	Contract 1-92 - Pine Street WWTP (General/Mechanical)	1995-96	\$4,000.00		
915	381	Wall Sleeves	Contract 1-92 - Pine Street WWTP (General/Mechanical)	1995-96	\$23,625.00		
916	381	1/2" PVC Pipe & Ftgs	Contract 1-92 - Pine Street WWTP (General/Mechanical)	1995-96	\$280.00		
917	381	1" PVC Pipe & Ftgs	Contract 1-92 - Pine Street WWTP (General/Mechanical)	1995-96	\$360.00		
918	381	1 1/2" PVC Pipe & Ftgs	Contract 1-92 - Pine Street WWTP (General/Mechanical)	1995-96	\$3,080.00		
919	381	2" PVC Pipe & Ftgs	Contract 1-92 - Pine Street WWTP (General/Mechanical)	1995-96	\$2,800.00		
920	381	3" PVC Pipe & Ftgs	Contract 1-92 - Pine Street WWTP (General/Mechanical)	1995-96	\$480.00		

**APPENDIX A - WASTEWATER SYSTEM  
ORIGINAL COST OF INVENTORY/ASSETS**

**ORGANIZED BY ACCOUNT NUMBER**

ITEM #	ACCOUNT	PROPERTY DESCRIPTION	CONTRACT NUMBER	YEAR	UNIT COST	ACCOUNT COST	COMMENTS
921	381	6" PVC Pipe & Ftgs	Contract 1-92 - Pine Street WWTP (General/Mechanical)	1995-96	\$11,500.00		
922	381	24" PVC Pipe & Ftgs	Contract 1-92 - Pine Street WWTP (General/Mechanical)	1995-96	\$10,400.00		
923	381	6" DI Pipe & Ftgs	Contract 1-92 - Pine Street WWTP (General/Mechanical)	1995-96	\$80,000.00		
924	381	8" DI Pipe & Ftgs	Contract 1-92 - Pine Street WWTP (General/Mechanical)	1995-96	\$8,580.00		
925	381	14" DI Pipe & Ftgs	Contract 1-92 - Pine Street WWTP (General/Mechanical)	1995-96	\$880.00		
926	381	16" DI Pipe & Ftgs	Contract 1-92 - Pine Street WWTP (General/Mechanical)	1995-96	\$6,120.00		
927	381	24" DI Pipe & Ftgs	Contract 1-92 - Pine Street WWTP (General/Mechanical)	1995-96	\$69,120.00		
928	381	3" DI Process Pipe & Ftgs	Contract 1-92 - Pine Street WWTP (General/Mechanical)	1995-96	\$310.00		
929	381	4" DI Process Pipe & Ftgs	Contract 1-92 - Pine Street WWTP (General/Mechanical)	1995-96	\$5,375.00		
930	381	6" DI Process Pipe & Ftgs	Contract 1-92 - Pine Street WWTP (General/Mechanical)	1995-96	\$19,890.00		
931	381	8" DI Process Pipe & Ftgs	Contract 1-92 - Pine Street WWTP (General/Mechanical)	1995-96	\$275.00		
932	381	12" DI Process Pipe & Ftgs	Contract 1-92 - Pine Street WWTP (General/Mechanical)	1995-96	\$134.00		
933	381	14" DI Process Pipe & Ftgs	Contract 1-92 - Pine Street WWTP (General/Mechanical)	1995-96	\$29,750.00		
934	381	16" DI Process Pipe & Ftgs	Contract 1-92 - Pine Street WWTP (General/Mechanical)	1995-96	\$5,320.00		
935	381	24" DI Process Pipe & Ftgs	Contract 1-92 - Pine Street WWTP (General/Mechanical)	1995-96	\$4,900.00		
936	381	1/2" Copper Tube & Ftgs	Contract 1-92 - Pine Street WWTP (General/Mechanical)	1995-96	\$300.00		

**APPENDIX A - WASTEWATER SYSTEM  
ORIGINAL COST OF INVENTORY/ASSETS**

**ORGANIZED BY ACCOUNT NUMBER**

ITEM #	ACCOUNT	PROPERTY DESCRIPTION	CONTRACT NUMBER	YEAR	UNIT COST	ACCOUNT COST	COMMENTS
937	381	3/4" Copper Tube & Ftgs	Contract 1-92 - Pine Street WWTP (General/Mechanical)	1995-96	\$6,080.00		
<del>938</del>	381	1" Copper Tube & Ftgs	Contract 1-92 - Pine Street WWTP (General/Mechanical)	1995-96	\$1,520.00		
939	381	2" Copper Tube & Ftgs	Contract 1-92 - Pine Street WWTP (General/Mechanical)	1995-96	\$4,800.00		
940	381	2 1/2" Copper Tube & Ftgs	Contract 1-92 - Pine Street WWTP (General/Mechanical)	1995-96	\$11,160.00		

**APPENDIX A - WASTEWATER SYSTEM  
ORIGINAL COST OF INVENTORY/ASSETS**

**ORGANIZED BY ACCOUNT NUMBER**

ITEM #	ACCOUNT	PROPERTY DESCRIPTION	CONTRACT NUMBER	YEAR	UNIT COST	ACCOUNT COST	COMMENTS
941	381	1/2" Valves	Contract 1-92 - Pine Street WWTP (General/Mechanical)	1995-96	\$182.00		
942	381	3/4" Valves	Contract 1-92 - Pine Street WWTP (General/Mechanical)	1995-96	\$1,350.00		
943	381	1" Valves	Contract 1-92 - Pine Street WWTP (General/Mechanical)	1995-96	\$475.00		
944	381	2" Valves	Contract 1-92 - Pine Street WWTP (General/Mechanical)	1995-96	\$573.00		
945	381	3" Valves	Contract 1-92 - Pine Street WWTP (General/Mechanical)	1995-96	\$460.00		
946	381	4" Valves	Contract 1-92 - Pine Street WWTP (General/Mechanical)	1995-96	\$25,545.00		
947	381	6" Valves	Contract 1-92 - Pine Street WWTP (General/Mechanical)	1995-96	\$57,330.00		
948	381	8" Valves	Contract 1-92 - Pine Street WWTP (General/Mechanical)	1995-96	\$3,323.00		
949	381	16" Valves	Contract 1-92 - Pine Street WWTP (General/Mechanical)	1995-96	\$6,400.00		
950	381	24" Valves	Contract 1-92 - Pine Street WWTP (General/Mechanical)	1995-96	\$59,150.00		
951	381	Valves Boxes	Contract 1-92 - Pine Street WWTP (General/Mechanical)	1995-96	\$5,580.00		
952	381	Mud Valves	Contract 1-92 - Pine Street WWTP (General/Mechanical)	1995-96	\$1,970.00		
953	381	Yard Hydrants	Contract 1-92 - Pine Street WWTP (General/Mechanical)	1995-96	\$9,405.00		
954	381	Hose Reels	Contract 1-92 - Pine Street WWTP (General/Mechanical)	1995-96	\$5,670.00		
955	381	Relief Valves	Contract 1-92 - Pine Street WWTP (General/Mechanical)	1995-96	\$3,000.00		
956	381	Telescopic Valves	Contract 1-92 - Pine Street WWTP (General/Mechanical)	1995-96	\$3,850.00		

**APPENDIX A - WASTEWATER SYSTEM  
ORIGINAL COST OF INVENTORY/ASSETS**

**ORGANIZED BY ACCOUNT NUMBER**

ITEM #	ACCOUNT	PROPERTY DESCRIPTION	CONTRACT NUMBER	YEAR	UNIT COST	ACCOUNT COST	COMMENTS
957	381	Stop Gates	Contract 1-92 - Pine Street WWTP (General/Mechanical)	1995-96	\$4,200.00		
958	381	Gauges	Contract 1-92 - Pine Street WWTP (General/Mechanical)	1995-96	\$1,122.00		
959	381	Backflow Preventers	Contract 1-92 - Pine Street WWTP (General/Mechanical)	1995-96	\$2,760.00		
960	381	Interior Process Piping - Mat.	Contract 4-92 - Kinzua Wastewater Treatment Plant General/Mechanical	1995-96	\$37,500.00		
961	381	Interior Process Piping - Install	Contract 4-92 - Kinzua Wastewater Treatment Plant General/Mechanical	1995-96	\$12,500.00		
962	381	CSO Modification		1999	\$11,996.14		
963	381	Pine St. - Combined Sewer Overflow		2003	\$418,386.64		
964	381	WWTP slipstream		2002	\$18,769.10		
965	381	CSO Bypass - Weir Install.		2004	\$33,243.90		
966	381	CSO Bypass - Weir Install		2004	\$600.00		
<b>SUB-TOTAL =</b>						<b>\$1,093,509.61</b>	

**389 - Other Plant and Misc Equipment**

967	389	2 Control Panels		2003	\$580.00		
<b>SUB-TOTAL =</b>						<b>\$580.00</b>	

**390 - Office Furniture and Equipment**

968	390	Safety Can Cabinet - 45 Gallon	Borough of Kane Original Cost of Inventory/Assets	2016	\$2,141.90		
969	390	Computer		1992	\$1,720.71		
970	390	Billing Package		1993	\$1,200.00		

**APPENDIX A - WASTEWATER SYSTEM  
ORIGINAL COST OF INVENTORY/ASSETS**

**ORGANIZED BY ACCOUNT NUMBER**

ITEM #	ACCOUNT	PROPERTY DESCRIPTION	CONTRACT NUMBER	YEAR	UNIT COST	ACCOUNT COST	COMMENTS
971	390	Kane Borough		2012	\$400.00		Reimburse 1/2 copier cost
972	390	Computer		2003	\$6,666.16		
973	390	Printer		2003	\$491.35		
974	390	Billing Software		2003	\$5,000.00		
975	390	Computer Equip.		2003	\$1,628.11		
976	390	Delinquent Billing Software		2005	\$3,000.00		
977	390	Crystal Reports Software		2004	\$205.00		
978	390	Plant software		2011	\$6,887.33		
979	390	Software & Computer (Integrated Controls)		2012	\$5,301.79		
<b>SUB-TOTAL =</b>						<b>\$34,642.35</b>	

**391 - Transportation Equipment**

980	391	1996 Ford F150 - Zook	Borough of Kane Original Cost of Inventory/Assets	1995	\$20,538.60		
981	391	2016 Ford F350		2016	\$31,688.72		
<b>SUB-TOTAL =</b>						<b>\$52,227.32</b>	

**392 - Stores Equipment**

982	392	Crane, Rear Bumber, & Aluminum Bed		2017	\$10,000.00		
<b>SUB-TOTAL =</b>						<b>\$10,000.00</b>	

**393 - Tools, Shop, and Garage Equipment**

983	393	Trash Pumps	Borough of Kane Original Cost of Inventory/Assets	1998	\$5,787.90		
-----	-----	-------------	---	------	------------	--	--

**APPENDIX A - WASTEWATER SYSTEM  
ORIGINAL COST OF INVENTORY/ASSETS**

**ORGANIZED BY ACCOUNT NUMBER**

ITEM #	ACCOUNT	PROPERTY DESCRIPTION	CONTRACT NUMBER	YEAR	UNIT COST	ACCOUNT COST	COMMENTS
984	393	Electric Motor	Borough of Kane Original Cost of Inventory/Assets	1999	\$3,377.85		

**APPENDIX A - WASTEWATER SYSTEM  
ORIGINAL COST OF INVENTORY/ASSETS**

**ORGANIZED BY ACCOUNT NUMBER**

ITEM #	ACCOUNT	PROPERTY DESCRIPTION	CONTRACT NUMBER	YEAR	UNIT COST	ACCOUNT COST	COMMENTS
985	393	Electric Pump	Borough of Kane Original Cost of Inventory/Assets	1999	\$3,966.61		
986	393	Glass Washing Machine	Borough of Kane Original Cost of Inventory/Assets	1999	\$4,555.20		
987	393	Rebuilt Pump	Borough of Kane Original Cost of Inventory/Assets	2002	\$4,970.00		
988	393	Rebuilt Pump	Borough of Kane Original Cost of Inventory/Assets	2002	\$2,514.74		
989	393	Pump	Borough of Kane Original Cost of Inventory/Assets	2003	\$2,756.87		
990	393	Pump	Borough of Kane Original Cost of Inventory/Assets	2003	\$2,756.87		
991	393	Boiler	Borough of Kane Original Cost of Inventory/Assets	2006	\$7,783.00		
992	393	Boiler - Pine St Treatment Plant	Borough of Kane Original Cost of Inventory/Assets	2009	\$5,497.00		
993	393	Rebuild Pump	Borough of Kane Original Cost of Inventory/Assets	2015	\$4,990.00		
994	393	Pump - East Kane Pond Lift Station	Borough of Kane Original Cost of Inventory/Assets	2015	\$4,739.23		
995	393	Electric Actuator	Borough of Kane Original Cost of Inventory/Assets	2015	\$4,398.09		
996	393	2 Sensors	Borough of Kane Original Cost of Inventory/Assets	2015	\$2,191.00		
997	393	2 Sensors	Borough of Kane Original Cost of Inventory/Assets	2015	\$1,995.00		
998	393	LMI Chemical Feed Pump	Borough of Kane Original Cost of Inventory/Assets	2016	\$1,082.66		
999	393	Volute Aqua CI CW 4"	Borough of Kane Original Cost of Inventory/Assets	2016	\$3,131.77		
1000	393	Hydrant Meter		2004	\$894.10		

**APPENDIX A - WASTEWATER SYSTEM  
ORIGINAL COST OF INVENTORY/ASSETS**

**ORGANIZED BY ACCOUNT NUMBER**

ITEM #	ACCOUNT	PROPERTY DESCRIPTION	CONTRACT NUMBER	YEAR	UNIT COST	ACCOUNT COST	COMMENTS
1001	393	Circuit Board		2004	\$621.45		
1002	393	Trinity Boiler - Kinzua Plant (Allied)		2013	\$6,242.00		
1003	393	ABS Pump		2016	\$3,400.00		
1004	393	Actuator		2016	\$4,322.61		
<b>SUB-TOTAL =</b>						<b>\$81,973.95</b>	

**394 - Laboratory Equipment**

1005	394	Ion Meters - Fisher (2)	Borough of Kane Original Cost of Inventory/Assets	1995	\$2,319.38		
1006	394	Rain Gauge		2003	\$3,481.01		
1007	394	Mechanical Oven		2003	\$1,229.40		
<b>SUB-TOTAL =</b>						<b>\$7,029.79</b>	

**395 - Power Operated Equipment**

1005	395	Plow for Pickup Truck	Borough of Kane Original Cost of Inventory/Assets	2014	\$4,065.00		
<b>SUB-TOTAL =</b>						<b>\$4,065.00</b>	

**396 - Communication Equipment**

1008	396	50 XM 1000 Converter	Borough of Kane Original Cost of Inventory/Assets	2016	\$1,955.01		
1009	396	Cellular Alarm Communicator	Borough of Kane Original Cost of Inventory/Assets	2016	\$2,642.00		
1010	396	Network Cables & Parts		2003	\$640.00		
1011	396	Network Cable Installation		2003	\$210.00		
1012	396	Pagers		1996	\$931.65		

**APPENDIX A - WASTEWATER SYSTEM  
ORIGINAL COST OF INVENTORY/ASSETS**

**ORGANIZED BY ACCOUNT NUMBER**

ITEM #	ACCOUNT	PROPERTY DESCRIPTION	CONTRACT NUMBER	YEAR	UNIT COST	ACCOUNT COST	COMMENTS
1013	396	Communications System		2011	\$3,996.95		
<b>SUB-TOTAL =</b>						<b>\$10,375.61</b>	

**397 - Miscellaneous Equipment**

1014	397	Sink and Table	Borough of Kane Original Cost of Inventory/Assets	1998	\$1,305.00		
1015	397	Specialties (signs, fire extinguishers)	Contract 1-92 - Pine Street WWTP (General/Mechanical)	1995-96	\$1,599.00		
1016	397	3 Infrared Heaters & Installation		2004	\$4,051.60		
<b>SUB-TOTAL =</b>						<b>\$6,955.60</b>	
<b>GRAND-TOTAL =</b>						<b>\$21,023,527.36</b>	

<sup>(1)</sup> See Reference Tables for project cost break down and corresponding account numbers per pay item.

**EXCLUDED ASSETS:**

1017	371	Galati On Lot 537		2001	\$ 52,571.06		Installation of 9 grinder pumps
1018	371	Grinder pumps (Trombold)	Contract 93-8 - Grinder Pumps	1996	\$ 124,216.00		Grinder Pumps
1019	371	Grinder Pumps - 5		2003	\$ 16,900.00		Grinder Pumps
1020	371	Grinder Pumps - 2		2003	\$ 6,960.00		Grinder Pumps
1021	395	Beckwith Loader (partial)		1997	\$ 15,000.00		Retained by Boro
1022	361	Service Laterals from curb to house		varies	\$		Retained by customers
<b>TOTAL</b>						<b>\$ 215,647.06</b>	

# APPENDIX B

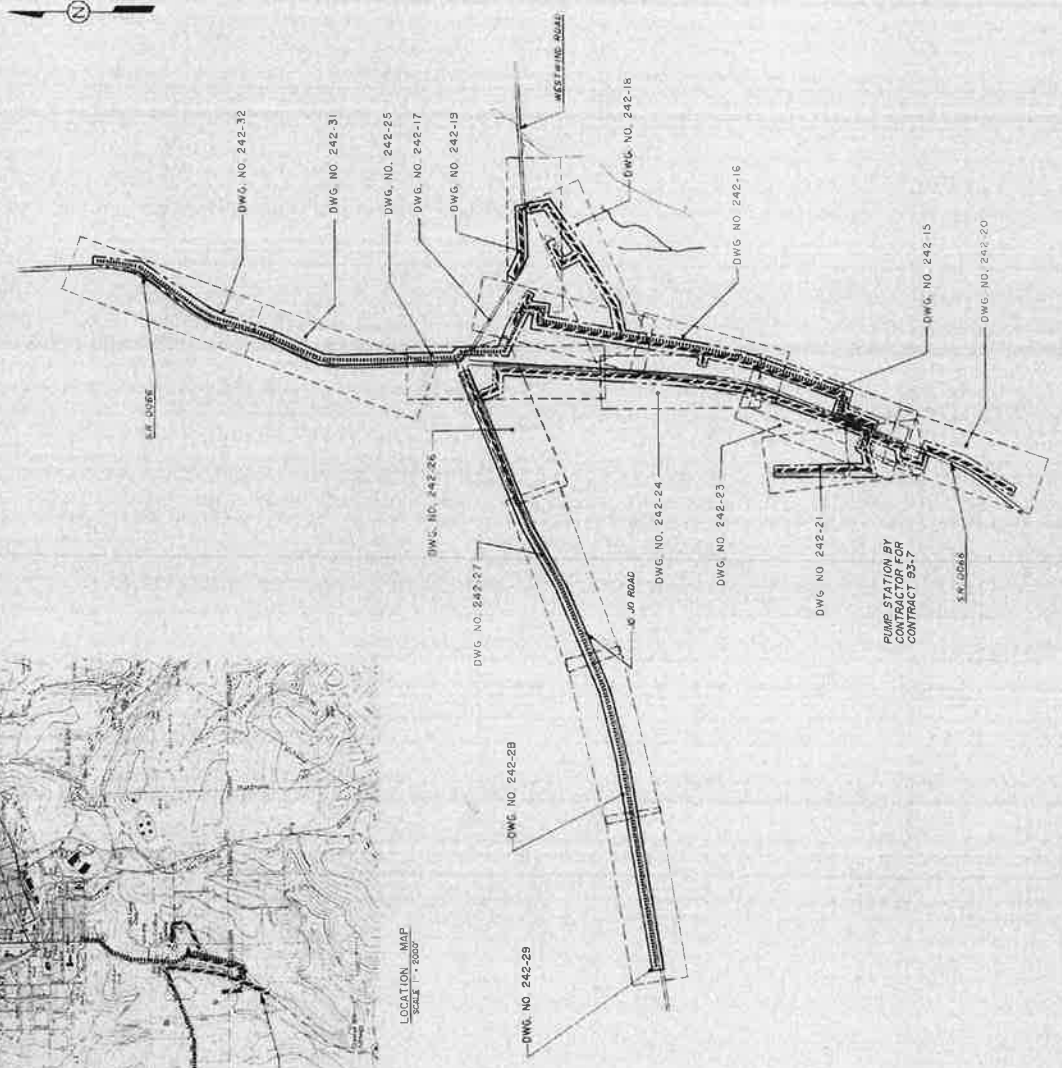




# CONTRACT 93-2 ROUTE 66 AREA SANITARY SEWERS AND APPURTENANCES



DWG. NO.	DESCRIPTION	SHEET NO.
242-03	1814-1816	1 of 104
242-04	Contract 93-2 Order No. 1814	2 of 104
242-05	Contract 93-2 Order No. 1815	3 of 104
242-06	Contract 93-2 Order No. 1816	4 of 104
242-07	Contract 93-2 Order No. 1817	5 of 104
242-08	Contract 93-2 Order No. 1818	6 of 104
242-09	Contract 93-2 Order No. 1819	7 of 104
242-10	Contract 93-2 Order No. 1820	8 of 104
242-11	Contract 93-2 Order No. 1821	9 of 104
242-12	Contract 93-2 Order No. 1822	10 of 104
242-13	Contract 93-2 Order No. 1823	11 of 104
242-14	Contract 93-2 Order No. 1824	12 of 104
242-15	Contract 93-2 Order No. 1825	13 of 104
242-16	Contract 93-2 Order No. 1826	14 of 104
242-17	Contract 93-2 Order No. 1827	15 of 104
242-18	Contract 93-2 Order No. 1828	16 of 104
242-19	Contract 93-2 Order No. 1829	17 of 104
242-20	Contract 93-2 Order No. 1830	18 of 104
242-21	Contract 93-2 Order No. 1831	19 of 104
242-22	Contract 93-2 Order No. 1832	20 of 104
242-23	Contract 93-2 Order No. 1833	21 of 104
242-24	Contract 93-2 Order No. 1834	22 of 104
242-25	Contract 93-2 Order No. 1835	23 of 104
242-26	Contract 93-2 Order No. 1836	24 of 104
242-27	Contract 93-2 Order No. 1837	25 of 104
242-28	Contract 93-2 Order No. 1838	26 of 104
242-29	Contract 93-2 Order No. 1839	27 of 104
242-30	Contract 93-2 Order No. 1840	28 of 104
242-31	Contract 93-2 Order No. 1841	29 of 104
242-32	Contract 93-2 Order No. 1842	30 of 104
242-33	Contract 93-2 Order No. 1843	31 of 104
242-34	Contract 93-2 Order No. 1844	32 of 104
242-35	Contract 93-2 Order No. 1845	33 of 104
242-36	Contract 93-2 Order No. 1846	34 of 104
242-37	Contract 93-2 Order No. 1847	35 of 104
242-38	Contract 93-2 Order No. 1848	36 of 104
242-39	Contract 93-2 Order No. 1849	37 of 104
242-40	Contract 93-2 Order No. 1850	38 of 104
242-41	Contract 93-2 Order No. 1851	39 of 104
242-42	Contract 93-2 Order No. 1852	40 of 104
242-43	Contract 93-2 Order No. 1853	41 of 104
242-44	Contract 93-2 Order No. 1854	42 of 104
242-45	Contract 93-2 Order No. 1855	43 of 104
242-46	Contract 93-2 Order No. 1856	44 of 104
242-47	Contract 93-2 Order No. 1857	45 of 104
242-48	Contract 93-2 Order No. 1858	46 of 104
242-49	Contract 93-2 Order No. 1859	47 of 104
242-50	Contract 93-2 Order No. 1860	48 of 104
242-51	Contract 93-2 Order No. 1861	49 of 104
242-52	Contract 93-2 Order No. 1862	50 of 104
242-53	Contract 93-2 Order No. 1863	51 of 104
242-54	Contract 93-2 Order No. 1864	52 of 104
242-55	Contract 93-2 Order No. 1865	53 of 104
242-56	Contract 93-2 Order No. 1866	54 of 104
242-57	Contract 93-2 Order No. 1867	55 of 104
242-58	Contract 93-2 Order No. 1868	56 of 104
242-59	Contract 93-2 Order No. 1869	57 of 104
242-60	Contract 93-2 Order No. 1870	58 of 104
242-61	Contract 93-2 Order No. 1871	59 of 104
242-62	Contract 93-2 Order No. 1872	60 of 104
242-63	Contract 93-2 Order No. 1873	61 of 104
242-64	Contract 93-2 Order No. 1874	62 of 104
242-65	Contract 93-2 Order No. 1875	63 of 104
242-66	Contract 93-2 Order No. 1876	64 of 104
242-67	Contract 93-2 Order No. 1877	65 of 104
242-68	Contract 93-2 Order No. 1878	66 of 104
242-69	Contract 93-2 Order No. 1879	67 of 104
242-70	Contract 93-2 Order No. 1880	68 of 104
242-71	Contract 93-2 Order No. 1881	69 of 104
242-72	Contract 93-2 Order No. 1882	70 of 104
242-73	Contract 93-2 Order No. 1883	71 of 104
242-74	Contract 93-2 Order No. 1884	72 of 104
242-75	Contract 93-2 Order No. 1885	73 of 104
242-76	Contract 93-2 Order No. 1886	74 of 104
242-77	Contract 93-2 Order No. 1887	75 of 104
242-78	Contract 93-2 Order No. 1888	76 of 104
242-79	Contract 93-2 Order No. 1889	77 of 104
242-80	Contract 93-2 Order No. 1890	78 of 104
242-81	Contract 93-2 Order No. 1891	79 of 104
242-82	Contract 93-2 Order No. 1892	80 of 104
242-83	Contract 93-2 Order No. 1893	81 of 104
242-84	Contract 93-2 Order No. 1894	82 of 104
242-85	Contract 93-2 Order No. 1895	83 of 104
242-86	Contract 93-2 Order No. 1896	84 of 104
242-87	Contract 93-2 Order No. 1897	85 of 104
242-88	Contract 93-2 Order No. 1898	86 of 104
242-89	Contract 93-2 Order No. 1899	87 of 104
242-90	Contract 93-2 Order No. 1900	88 of 104
242-91	Contract 93-2 Order No. 1901	89 of 104
242-92	Contract 93-2 Order No. 1902	90 of 104
242-93	Contract 93-2 Order No. 1903	91 of 104
242-94	Contract 93-2 Order No. 1904	92 of 104
242-95	Contract 93-2 Order No. 1905	93 of 104
242-96	Contract 93-2 Order No. 1906	94 of 104
242-97	Contract 93-2 Order No. 1907	95 of 104
242-98	Contract 93-2 Order No. 1908	96 of 104
242-99	Contract 93-2 Order No. 1909	97 of 104
242-100	Contract 93-2 Order No. 1910	98 of 104
242-101	Contract 93-2 Order No. 1911	99 of 104
242-102	Contract 93-2 Order No. 1912	100 of 104



LEGEND

Symbol	Description
[Symbol]	1814-1816
[Symbol]	Contract 93-2
[Symbol]	Order No. 1814
[Symbol]	Order No. 1815
[Symbol]	Order No. 1816
[Symbol]	Order No. 1817
[Symbol]	Order No. 1818
[Symbol]	Order No. 1819
[Symbol]	Order No. 1820
[Symbol]	Order No. 1821
[Symbol]	Order No. 1822
[Symbol]	Order No. 1823
[Symbol]	Order No. 1824
[Symbol]	Order No. 1825
[Symbol]	Order No. 1826
[Symbol]	Order No. 1827
[Symbol]	Order No. 1828
[Symbol]	Order No. 1829
[Symbol]	Order No. 1830
[Symbol]	Order No. 1831
[Symbol]	Order No. 1832
[Symbol]	Order No. 1833
[Symbol]	Order No. 1834
[Symbol]	Order No. 1835
[Symbol]	Order No. 1836
[Symbol]	Order No. 1837
[Symbol]	Order No. 1838
[Symbol]	Order No. 1839
[Symbol]	Order No. 1840
[Symbol]	Order No. 1841
[Symbol]	Order No. 1842
[Symbol]	Order No. 1843
[Symbol]	Order No. 1844
[Symbol]	Order No. 1845
[Symbol]	Order No. 1846
[Symbol]	Order No. 1847
[Symbol]	Order No. 1848
[Symbol]	Order No. 1849
[Symbol]	Order No. 1850
[Symbol]	Order No. 1851
[Symbol]	Order No. 1852
[Symbol]	Order No. 1853
[Symbol]	Order No. 1854
[Symbol]	Order No. 1855
[Symbol]	Order No. 1856
[Symbol]	Order No. 1857
[Symbol]	Order No. 1858
[Symbol]	Order No. 1859
[Symbol]	Order No. 1860
[Symbol]	Order No. 1861
[Symbol]	Order No. 1862
[Symbol]	Order No. 1863
[Symbol]	Order No. 1864
[Symbol]	Order No. 1865
[Symbol]	Order No. 1866
[Symbol]	Order No. 1867
[Symbol]	Order No. 1868
[Symbol]	Order No. 1869
[Symbol]	Order No. 1870
[Symbol]	Order No. 1871
[Symbol]	Order No. 1872
[Symbol]	Order No. 1873
[Symbol]	Order No. 1874
[Symbol]	Order No. 1875
[Symbol]	Order No. 1876
[Symbol]	Order No. 1877
[Symbol]	Order No. 1878
[Symbol]	Order No. 1879
[Symbol]	Order No. 1880
[Symbol]	Order No. 1881
[Symbol]	Order No. 1882
[Symbol]	Order No. 1883
[Symbol]	Order No. 1884
[Symbol]	Order No. 1885
[Symbol]	Order No. 1886
[Symbol]	Order No. 1887
[Symbol]	Order No. 1888
[Symbol]	Order No. 1889
[Symbol]	Order No. 1890
[Symbol]	Order No. 1891
[Symbol]	Order No. 1892
[Symbol]	Order No. 1893
[Symbol]	Order No. 1894
[Symbol]	Order No. 1895
[Symbol]	Order No. 1896
[Symbol]	Order No. 1897
[Symbol]	Order No. 1898
[Symbol]	Order No. 1899
[Symbol]	Order No. 1900
[Symbol]	Order No. 1901
[Symbol]	Order No. 1902
[Symbol]	Order No. 1903
[Symbol]	Order No. 1904
[Symbol]	Order No. 1905
[Symbol]	Order No. 1906
[Symbol]	Order No. 1907
[Symbol]	Order No. 1908
[Symbol]	Order No. 1909
[Symbol]	Order No. 1910
[Symbol]	Order No. 1911
[Symbol]	Order No. 1912



THE BOARD OF WATER UTILITIES  
CITY OF DENVER  
CONTRACT 93-2 ROUTE 66 AREA  
SANITARY SEWERS AND APPURTENANCES

KLM  
KIMLEY-HORN & ASSOCIATES, INC.  
1500 Broadway, Suite 2000, Denver, CO 80202  
Tel: 303.733.1111 Fax: 303.733.1111

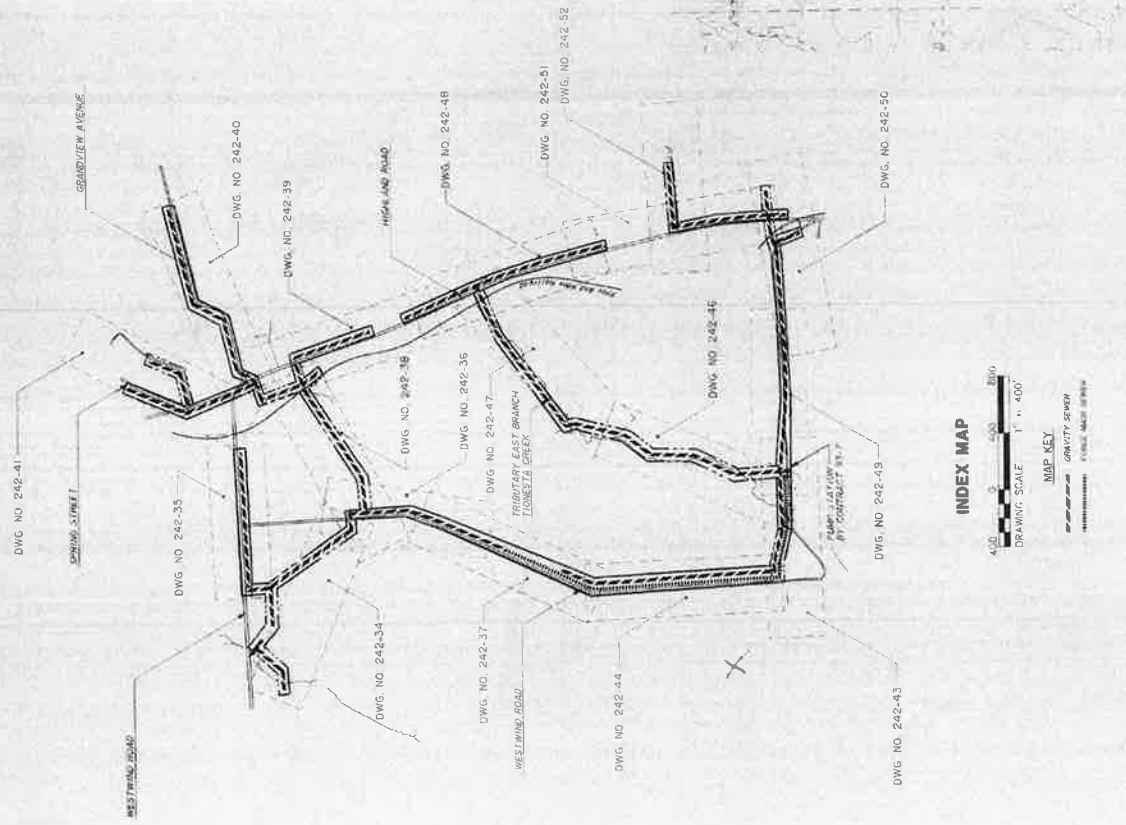
DATE: 10/15/93  
DRAWN BY: KLM  
CHECKED BY: KLM  
SCALE: AS SHOWN

# CONTRACT 93-3 WESTWIND AREA SANITARY SEWERS AND APPURTENANCES



DWG. NO.	TITLE	DATE	BY	CHKD.	APP. NO.
242-02	STATION HEADS	11/11/84	...	...	...
242-03	CONTRACT 93-3 MAIN AND BRANCH	11/11/84	...	...	...
242-04	CONTRACT 93-3 MAIN AND BRANCH	11/11/84	...	...	...
242-05	CONTRACT 93-3 MAIN AND BRANCH	11/11/84	...	...	...
242-06	CONTRACT 93-3 MAIN AND BRANCH	11/11/84	...	...	...
242-07	CONTRACT 93-3 MAIN AND BRANCH	11/11/84	...	...	...
242-08	CONTRACT 93-3 MAIN AND BRANCH	11/11/84	...	...	...
242-09	CONTRACT 93-3 MAIN AND BRANCH	11/11/84	...	...	...
242-10	CONTRACT 93-3 MAIN AND BRANCH	11/11/84	...	...	...
242-11	CONTRACT 93-3 MAIN AND BRANCH	11/11/84	...	...	...
242-12	CONTRACT 93-3 MAIN AND BRANCH	11/11/84	...	...	...
242-13	CONTRACT 93-3 MAIN AND BRANCH	11/11/84	...	...	...
242-14	CONTRACT 93-3 MAIN AND BRANCH	11/11/84	...	...	...
242-15	CONTRACT 93-3 MAIN AND BRANCH	11/11/84	...	...	...
242-16	CONTRACT 93-3 MAIN AND BRANCH	11/11/84	...	...	...
242-17	CONTRACT 93-3 MAIN AND BRANCH	11/11/84	...	...	...
242-18	CONTRACT 93-3 MAIN AND BRANCH	11/11/84	...	...	...
242-19	CONTRACT 93-3 MAIN AND BRANCH	11/11/84	...	...	...
242-20	CONTRACT 93-3 MAIN AND BRANCH	11/11/84	...	...	...
242-21	CONTRACT 93-3 MAIN AND BRANCH	11/11/84	...	...	...
242-22	CONTRACT 93-3 MAIN AND BRANCH	11/11/84	...	...	...
242-23	CONTRACT 93-3 MAIN AND BRANCH	11/11/84	...	...	...
242-24	CONTRACT 93-3 MAIN AND BRANCH	11/11/84	...	...	...
242-25	CONTRACT 93-3 MAIN AND BRANCH	11/11/84	...	...	...
242-26	CONTRACT 93-3 MAIN AND BRANCH	11/11/84	...	...	...
242-27	CONTRACT 93-3 MAIN AND BRANCH	11/11/84	...	...	...
242-28	CONTRACT 93-3 MAIN AND BRANCH	11/11/84	...	...	...
242-29	CONTRACT 93-3 MAIN AND BRANCH	11/11/84	...	...	...
242-30	CONTRACT 93-3 MAIN AND BRANCH	11/11/84	...	...	...
242-31	CONTRACT 93-3 MAIN AND BRANCH	11/11/84	...	...	...
242-32	CONTRACT 93-3 MAIN AND BRANCH	11/11/84	...	...	...
242-33	CONTRACT 93-3 MAIN AND BRANCH	11/11/84	...	...	...
242-34	CONTRACT 93-3 MAIN AND BRANCH	11/11/84	...	...	...
242-35	CONTRACT 93-3 MAIN AND BRANCH	11/11/84	...	...	...
242-36	CONTRACT 93-3 MAIN AND BRANCH	11/11/84	...	...	...
242-37	CONTRACT 93-3 MAIN AND BRANCH	11/11/84	...	...	...
242-38	CONTRACT 93-3 MAIN AND BRANCH	11/11/84	...	...	...
242-39	CONTRACT 93-3 MAIN AND BRANCH	11/11/84	...	...	...
242-40	CONTRACT 93-3 MAIN AND BRANCH	11/11/84	...	...	...
242-41	CONTRACT 93-3 MAIN AND BRANCH	11/11/84	...	...	...
242-42	CONTRACT 93-3 MAIN AND BRANCH	11/11/84	...	...	...
242-43	CONTRACT 93-3 MAIN AND BRANCH	11/11/84	...	...	...
242-44	CONTRACT 93-3 MAIN AND BRANCH	11/11/84	...	...	...
242-45	CONTRACT 93-3 MAIN AND BRANCH	11/11/84	...	...	...
242-46	CONTRACT 93-3 MAIN AND BRANCH	11/11/84	...	...	...
242-47	CONTRACT 93-3 MAIN AND BRANCH	11/11/84	...	...	...
242-48	CONTRACT 93-3 MAIN AND BRANCH	11/11/84	...	...	...
242-49	CONTRACT 93-3 MAIN AND BRANCH	11/11/84	...	...	...
242-50	CONTRACT 93-3 MAIN AND BRANCH	11/11/84	...	...	...
242-51	CONTRACT 93-3 MAIN AND BRANCH	11/11/84	...	...	...
242-52	CONTRACT 93-3 MAIN AND BRANCH	11/11/84	...	...	...
242-53	CONTRACT 93-3 MAIN AND BRANCH	11/11/84	...	...	...
242-54	CONTRACT 93-3 MAIN AND BRANCH	11/11/84	...	...	...
242-55	CONTRACT 93-3 MAIN AND BRANCH	11/11/84	...	...	...
242-56	CONTRACT 93-3 MAIN AND BRANCH	11/11/84	...	...	...
242-57	CONTRACT 93-3 MAIN AND BRANCH	11/11/84	...	...	...
242-58	CONTRACT 93-3 MAIN AND BRANCH	11/11/84	...	...	...
242-59	CONTRACT 93-3 MAIN AND BRANCH	11/11/84	...	...	...
242-60	CONTRACT 93-3 MAIN AND BRANCH	11/11/84	...	...	...
242-61	CONTRACT 93-3 MAIN AND BRANCH	11/11/84	...	...	...
242-62	CONTRACT 93-3 MAIN AND BRANCH	11/11/84	...	...	...
242-63	CONTRACT 93-3 MAIN AND BRANCH	11/11/84	...	...	...
242-64	CONTRACT 93-3 MAIN AND BRANCH	11/11/84	...	...	...
242-65	CONTRACT 93-3 MAIN AND BRANCH	11/11/84	...	...	...
242-66	CONTRACT 93-3 MAIN AND BRANCH	11/11/84	...	...	...
242-67	CONTRACT 93-3 MAIN AND BRANCH	11/11/84	...	...	...
242-68	CONTRACT 93-3 MAIN AND BRANCH	11/11/84	...	...	...
242-69	CONTRACT 93-3 MAIN AND BRANCH	11/11/84	...	...	...
242-70	CONTRACT 93-3 MAIN AND BRANCH	11/11/84	...	...	...
242-71	CONTRACT 93-3 MAIN AND BRANCH	11/11/84	...	...	...
242-72	CONTRACT 93-3 MAIN AND BRANCH	11/11/84	...	...	...
242-73	CONTRACT 93-3 MAIN AND BRANCH	11/11/84	...	...	...
242-74	CONTRACT 93-3 MAIN AND BRANCH	11/11/84	...	...	...
242-75	CONTRACT 93-3 MAIN AND BRANCH	11/11/84	...	...	...
242-76	CONTRACT 93-3 MAIN AND BRANCH	11/11/84	...	...	...
242-77	CONTRACT 93-3 MAIN AND BRANCH	11/11/84	...	...	...
242-78	CONTRACT 93-3 MAIN AND BRANCH	11/11/84	...	...	...
242-79	CONTRACT 93-3 MAIN AND BRANCH	11/11/84	...	...	...
242-80	CONTRACT 93-3 MAIN AND BRANCH	11/11/84	...	...	...
242-81	CONTRACT 93-3 MAIN AND BRANCH	11/11/84	...	...	...
242-82	CONTRACT 93-3 MAIN AND BRANCH	11/11/84	...	...	...
242-83	CONTRACT 93-3 MAIN AND BRANCH	11/11/84	...	...	...
242-84	CONTRACT 93-3 MAIN AND BRANCH	11/11/84	...	...	...
242-85	CONTRACT 93-3 MAIN AND BRANCH	11/11/84	...	...	...
242-86	CONTRACT 93-3 MAIN AND BRANCH	11/11/84	...	...	...
242-87	CONTRACT 93-3 MAIN AND BRANCH	11/11/84	...	...	...
242-88	CONTRACT 93-3 MAIN AND BRANCH	11/11/84	...	...	...
242-89	CONTRACT 93-3 MAIN AND BRANCH	11/11/84	...	...	...
242-90	CONTRACT 93-3 MAIN AND BRANCH	11/11/84	...	...	...
242-91	CONTRACT 93-3 MAIN AND BRANCH	11/11/84	...	...	...
242-92	CONTRACT 93-3 MAIN AND BRANCH	11/11/84	...	...	...
242-93	CONTRACT 93-3 MAIN AND BRANCH	11/11/84	...	...	...
242-94	CONTRACT 93-3 MAIN AND BRANCH	11/11/84	...	...	...
242-95	CONTRACT 93-3 MAIN AND BRANCH	11/11/84	...	...	...
242-96	CONTRACT 93-3 MAIN AND BRANCH	11/11/84	...	...	...
242-97	CONTRACT 93-3 MAIN AND BRANCH	11/11/84	...	...	...
242-98	CONTRACT 93-3 MAIN AND BRANCH	11/11/84	...	...	...
242-99	CONTRACT 93-3 MAIN AND BRANCH	11/11/84	...	...	...
242-100	CONTRACT 93-3 MAIN AND BRANCH	11/11/84	...	...	...

- PRIVATE EASEMENT
- PUBLIC RIGHT OF WAY



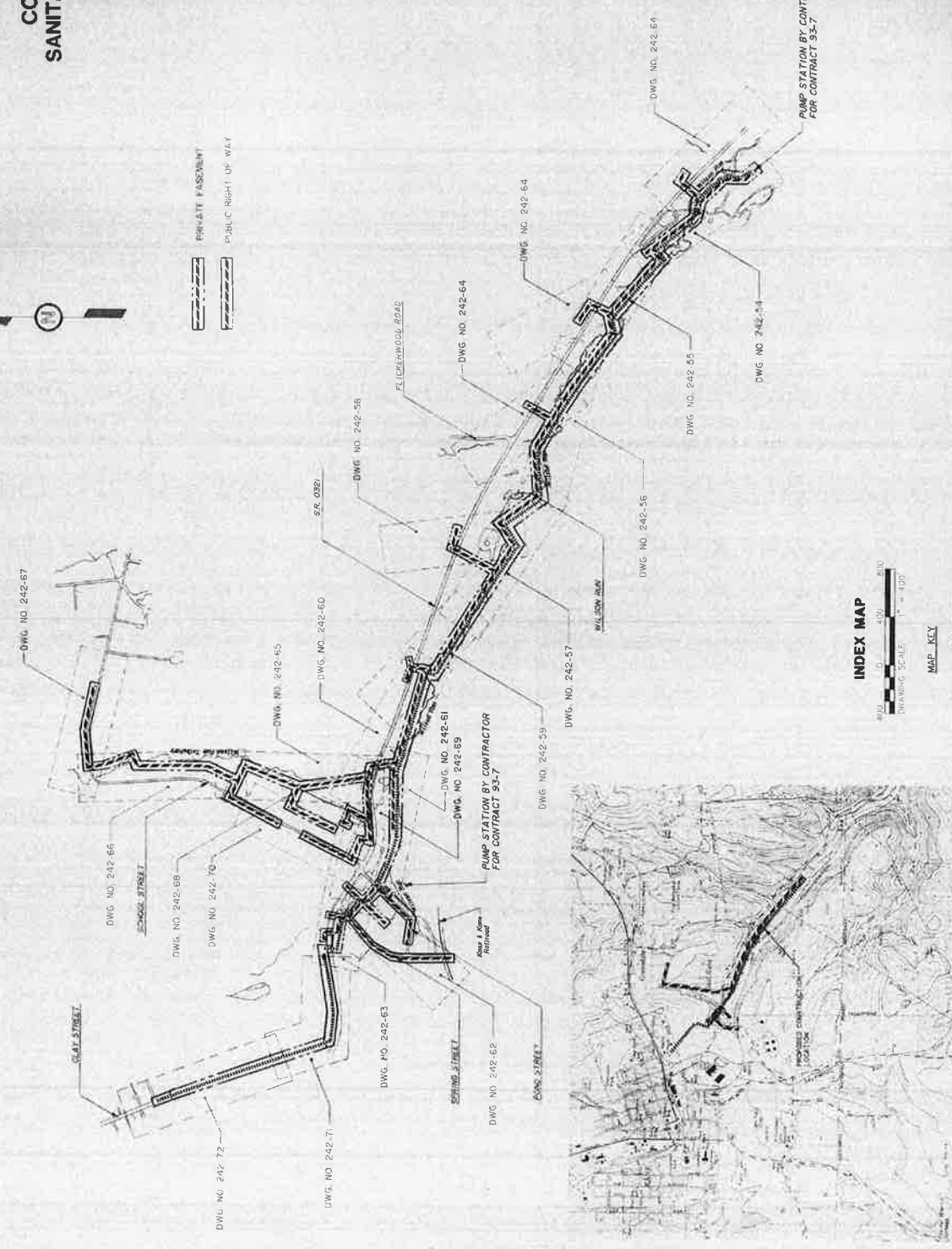
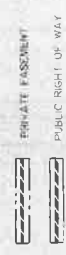
### INDEX MAP



THE BOROUGH OF PANE AUTHORITY	
DATE	11/11/84
BY	...
CHKD.	...
APP.	...
SCALE	1" = 400'
PROJECT NO.	...
DWG. NO.	242-33
DATE	11/11/84
BY	...
CHKD.	...
APP.	...
SCALE	1" = 400'
PROJECT NO.	...
DWG. NO.	242-33

# CONTRACT 93-4 EAST KANE AREA SANITARY SEWERS AND APPURTENANCES

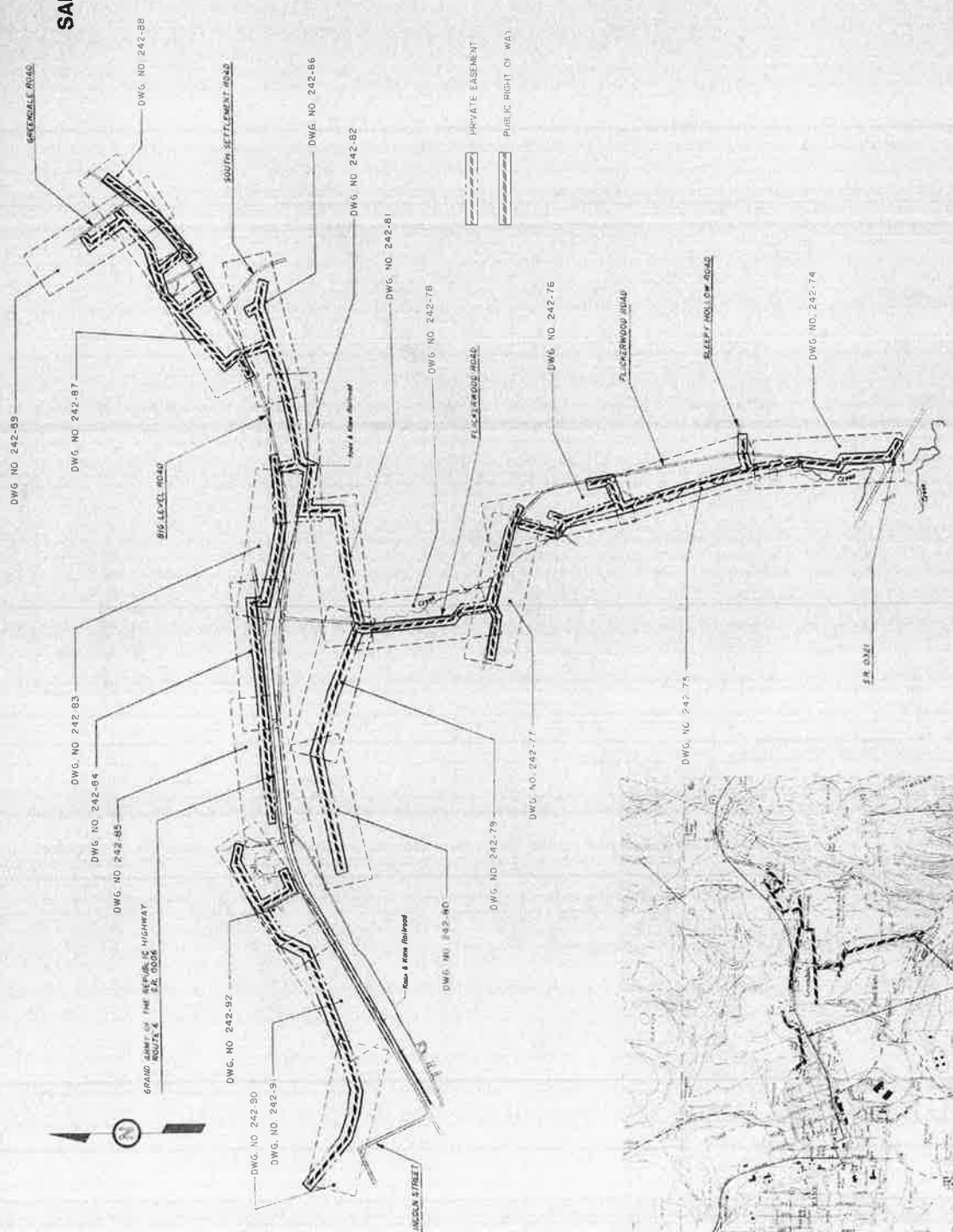
DWG. NO.	TITLE	DATE	BY	CHKD.	APP. NO.
242-02	CONTRACT 93-4	10/1/84	...	...	...
242-03	CONTRACT 93-4	10/1/84	...	...	...
242-04	CONTRACT 93-4	10/1/84	...	...	...
242-05	CONTRACT 93-4	10/1/84	...	...	...
242-06	CONTRACT 93-4	10/1/84	...	...	...
242-07	CONTRACT 93-4	10/1/84	...	...	...
242-08	CONTRACT 93-4	10/1/84	...	...	...
242-09	CONTRACT 93-4	10/1/84	...	...	...
242-10	CONTRACT 93-4	10/1/84	...	...	...
242-11	CONTRACT 93-4	10/1/84	...	...	...
242-12	CONTRACT 93-4	10/1/84	...	...	...
242-13	CONTRACT 93-4	10/1/84	...	...	...
242-14	CONTRACT 93-4	10/1/84	...	...	...
242-15	CONTRACT 93-4	10/1/84	...	...	...
242-16	CONTRACT 93-4	10/1/84	...	...	...
242-17	CONTRACT 93-4	10/1/84	...	...	...
242-18	CONTRACT 93-4	10/1/84	...	...	...
242-19	CONTRACT 93-4	10/1/84	...	...	...
242-20	CONTRACT 93-4	10/1/84	...	...	...
242-21	CONTRACT 93-4	10/1/84	...	...	...
242-22	CONTRACT 93-4	10/1/84	...	...	...
242-23	CONTRACT 93-4	10/1/84	...	...	...
242-24	CONTRACT 93-4	10/1/84	...	...	...
242-25	CONTRACT 93-4	10/1/84	...	...	...
242-26	CONTRACT 93-4	10/1/84	...	...	...
242-27	CONTRACT 93-4	10/1/84	...	...	...
242-28	CONTRACT 93-4	10/1/84	...	...	...
242-29	CONTRACT 93-4	10/1/84	...	...	...
242-30	CONTRACT 93-4	10/1/84	...	...	...
242-31	CONTRACT 93-4	10/1/84	...	...	...
242-32	CONTRACT 93-4	10/1/84	...	...	...
242-33	CONTRACT 93-4	10/1/84	...	...	...
242-34	CONTRACT 93-4	10/1/84	...	...	...
242-35	CONTRACT 93-4	10/1/84	...	...	...
242-36	CONTRACT 93-4	10/1/84	...	...	...
242-37	CONTRACT 93-4	10/1/84	...	...	...
242-38	CONTRACT 93-4	10/1/84	...	...	...
242-39	CONTRACT 93-4	10/1/84	...	...	...
242-40	CONTRACT 93-4	10/1/84	...	...	...
242-41	CONTRACT 93-4	10/1/84	...	...	...
242-42	CONTRACT 93-4	10/1/84	...	...	...
242-43	CONTRACT 93-4	10/1/84	...	...	...
242-44	CONTRACT 93-4	10/1/84	...	...	...
242-45	CONTRACT 93-4	10/1/84	...	...	...
242-46	CONTRACT 93-4	10/1/84	...	...	...
242-47	CONTRACT 93-4	10/1/84	...	...	...
242-48	CONTRACT 93-4	10/1/84	...	...	...
242-49	CONTRACT 93-4	10/1/84	...	...	...
242-50	CONTRACT 93-4	10/1/84	...	...	...
242-51	CONTRACT 93-4	10/1/84	...	...	...
242-52	CONTRACT 93-4	10/1/84	...	...	...
242-53	CONTRACT 93-4	10/1/84	...	...	...
242-54	CONTRACT 93-4	10/1/84	...	...	...
242-55	CONTRACT 93-4	10/1/84	...	...	...
242-56	CONTRACT 93-4	10/1/84	...	...	...
242-57	CONTRACT 93-4	10/1/84	...	...	...
242-58	CONTRACT 93-4	10/1/84	...	...	...
242-59	CONTRACT 93-4	10/1/84	...	...	...
242-60	CONTRACT 93-4	10/1/84	...	...	...
242-61	CONTRACT 93-4	10/1/84	...	...	...
242-62	CONTRACT 93-4	10/1/84	...	...	...
242-63	CONTRACT 93-4	10/1/84	...	...	...
242-64	CONTRACT 93-4	10/1/84	...	...	...
242-65	CONTRACT 93-4	10/1/84	...	...	...
242-66	CONTRACT 93-4	10/1/84	...	...	...
242-67	CONTRACT 93-4	10/1/84	...	...	...
242-68	CONTRACT 93-4	10/1/84	...	...	...
242-69	CONTRACT 93-4	10/1/84	...	...	...
242-70	CONTRACT 93-4	10/1/84	...	...	...
242-71	CONTRACT 93-4	10/1/84	...	...	...
242-72	CONTRACT 93-4	10/1/84	...	...	...
242-73	CONTRACT 93-4	10/1/84	...	...	...
242-74	CONTRACT 93-4	10/1/84	...	...	...
242-75	CONTRACT 93-4	10/1/84	...	...	...
242-76	CONTRACT 93-4	10/1/84	...	...	...
242-77	CONTRACT 93-4	10/1/84	...	...	...
242-78	CONTRACT 93-4	10/1/84	...	...	...
242-79	CONTRACT 93-4	10/1/84	...	...	...
242-80	CONTRACT 93-4	10/1/84	...	...	...
242-81	CONTRACT 93-4	10/1/84	...	...	...
242-82	CONTRACT 93-4	10/1/84	...	...	...
242-83	CONTRACT 93-4	10/1/84	...	...	...
242-84	CONTRACT 93-4	10/1/84	...	...	...
242-85	CONTRACT 93-4	10/1/84	...	...	...
242-86	CONTRACT 93-4	10/1/84	...	...	...
242-87	CONTRACT 93-4	10/1/84	...	...	...
242-88	CONTRACT 93-4	10/1/84	...	...	...
242-89	CONTRACT 93-4	10/1/84	...	...	...
242-90	CONTRACT 93-4	10/1/84	...	...	...
242-91	CONTRACT 93-4	10/1/84	...	...	...
242-92	CONTRACT 93-4	10/1/84	...	...	...
242-93	CONTRACT 93-4	10/1/84	...	...	...
242-94	CONTRACT 93-4	10/1/84	...	...	...
242-95	CONTRACT 93-4	10/1/84	...	...	...
242-96	CONTRACT 93-4	10/1/84	...	...	...
242-97	CONTRACT 93-4	10/1/84	...	...	...
242-98	CONTRACT 93-4	10/1/84	...	...	...
242-99	CONTRACT 93-4	10/1/84	...	...	...
242-100	CONTRACT 93-4	10/1/84	...	...	...



LOCATION MAP  
SCALE 1" = 4000'

THE BOARD OF PUBLIC UTILITIES  
CITY OF KANSAS CITY, MISSOURI  
CONTRACT 93-4 EAST KANE AREA  
SANITARY SEWERS AND APPURTENANCES  
K.H. CONSULTANTS, INC.

# CONTRACT 93-5 GREENDALE AREA SANITARY SEWERS AND APPURTENANCES



**REVISIONS**

NO.	DATE	DESCRIPTION
1	05 OF 104	
2	06 OF 104	
3	07 OF 104	
4	08 OF 104	
5	09 OF 104	
6	10 OF 104	
7	11 OF 104	
8	12 OF 104	
9	13 OF 104	
10	14 OF 104	
11	15 OF 104	
12	16 OF 104	
13	17 OF 104	
14	18 OF 104	
15	19 OF 104	
16	20 OF 104	
17	21 OF 104	
18	22 OF 104	
19	23 OF 104	
20	24 OF 104	
21	25 OF 104	
22	26 OF 104	
23	27 OF 104	
24	28 OF 104	
25	29 OF 104	
26	30 OF 104	
27	31 OF 104	
28	32 OF 104	
29	33 OF 104	
30	34 OF 104	
31	35 OF 104	
32	36 OF 104	
33	37 OF 104	
34	38 OF 104	
35	39 OF 104	
36	40 OF 104	
37	41 OF 104	
38	42 OF 104	
39	43 OF 104	
40	44 OF 104	
41	45 OF 104	
42	46 OF 104	
43	47 OF 104	
44	48 OF 104	
45	49 OF 104	
46	50 OF 104	
47	51 OF 104	
48	52 OF 104	
49	53 OF 104	
50	54 OF 104	
51	55 OF 104	
52	56 OF 104	
53	57 OF 104	
54	58 OF 104	
55	59 OF 104	
56	60 OF 104	
57	61 OF 104	
58	62 OF 104	
59	63 OF 104	
60	64 OF 104	
61	65 OF 104	
62	66 OF 104	
63	67 OF 104	
64	68 OF 104	
65	69 OF 104	
66	70 OF 104	
67	71 OF 104	
68	72 OF 104	
69	73 OF 104	
70	74 OF 104	
71	75 OF 104	
72	76 OF 104	
73	77 OF 104	
74	78 OF 104	
75	79 OF 104	
76	80 OF 104	
77	81 OF 104	
78	82 OF 104	
79	83 OF 104	
80	84 OF 104	
81	85 OF 104	
82	86 OF 104	
83	87 OF 104	
84	88 OF 104	
85	89 OF 104	
86	90 OF 104	
87	91 OF 104	
88	92 OF 104	
89	93 OF 104	
90	94 OF 104	
91	95 OF 104	
92	96 OF 104	
93	97 OF 104	
94	98 OF 104	
95	99 OF 104	
96	100 OF 104	
97	101 OF 104	
98	102 OF 104	
99	103 OF 104	
100	104 OF 104	

**LEGEND**

SYMBOL	DESCRIPTION
[Symbol]	1. 18" DIA. SANITARY SEWER
[Symbol]	2. 24" DIA. SANITARY SEWER
[Symbol]	3. 36" DIA. SANITARY SEWER
[Symbol]	4. 48" DIA. SANITARY SEWER
[Symbol]	5. 60" DIA. SANITARY SEWER
[Symbol]	6. 72" DIA. SANITARY SEWER
[Symbol]	7. 84" DIA. SANITARY SEWER
[Symbol]	8. 96" DIA. SANITARY SEWER
[Symbol]	9. 108" DIA. SANITARY SEWER
[Symbol]	10. 120" DIA. SANITARY SEWER
[Symbol]	11. 144" DIA. SANITARY SEWER
[Symbol]	12. 168" DIA. SANITARY SEWER
[Symbol]	13. 192" DIA. SANITARY SEWER
[Symbol]	14. 216" DIA. SANITARY SEWER
[Symbol]	15. 240" DIA. SANITARY SEWER
[Symbol]	16. 264" DIA. SANITARY SEWER
[Symbol]	17. 288" DIA. SANITARY SEWER
[Symbol]	18. 312" DIA. SANITARY SEWER
[Symbol]	19. 336" DIA. SANITARY SEWER
[Symbol]	20. 360" DIA. SANITARY SEWER
[Symbol]	21. 384" DIA. SANITARY SEWER
[Symbol]	22. 408" DIA. SANITARY SEWER
[Symbol]	23. 432" DIA. SANITARY SEWER
[Symbol]	24. 456" DIA. SANITARY SEWER
[Symbol]	25. 480" DIA. SANITARY SEWER
[Symbol]	26. 504" DIA. SANITARY SEWER
[Symbol]	27. 528" DIA. SANITARY SEWER
[Symbol]	28. 552" DIA. SANITARY SEWER
[Symbol]	29. 576" DIA. SANITARY SEWER
[Symbol]	30. 600" DIA. SANITARY SEWER
[Symbol]	31. 624" DIA. SANITARY SEWER
[Symbol]	32. 648" DIA. SANITARY SEWER
[Symbol]	33. 672" DIA. SANITARY SEWER
[Symbol]	34. 696" DIA. SANITARY SEWER
[Symbol]	35. 720" DIA. SANITARY SEWER
[Symbol]	36. 744" DIA. SANITARY SEWER
[Symbol]	37. 768" DIA. SANITARY SEWER
[Symbol]	38. 792" DIA. SANITARY SEWER
[Symbol]	39. 816" DIA. SANITARY SEWER
[Symbol]	40. 840" DIA. SANITARY SEWER
[Symbol]	41. 864" DIA. SANITARY SEWER
[Symbol]	42. 888" DIA. SANITARY SEWER
[Symbol]	43. 912" DIA. SANITARY SEWER
[Symbol]	44. 936" DIA. SANITARY SEWER
[Symbol]	45. 960" DIA. SANITARY SEWER
[Symbol]	46. 984" DIA. SANITARY SEWER
[Symbol]	47. 1008" DIA. SANITARY SEWER
[Symbol]	48. 1032" DIA. SANITARY SEWER
[Symbol]	49. 1056" DIA. SANITARY SEWER
[Symbol]	50. 1080" DIA. SANITARY SEWER
[Symbol]	51. 1104" DIA. SANITARY SEWER
[Symbol]	52. 1128" DIA. SANITARY SEWER
[Symbol]	53. 1152" DIA. SANITARY SEWER
[Symbol]	54. 1176" DIA. SANITARY SEWER
[Symbol]	55. 1200" DIA. SANITARY SEWER
[Symbol]	56. 1224" DIA. SANITARY SEWER
[Symbol]	57. 1248" DIA. SANITARY SEWER
[Symbol]	58. 1272" DIA. SANITARY SEWER
[Symbol]	59. 1296" DIA. SANITARY SEWER
[Symbol]	60. 1320" DIA. SANITARY SEWER
[Symbol]	61. 1344" DIA. SANITARY SEWER
[Symbol]	62. 1368" DIA. SANITARY SEWER
[Symbol]	63. 1392" DIA. SANITARY SEWER
[Symbol]	64. 1416" DIA. SANITARY SEWER
[Symbol]	65. 1440" DIA. SANITARY SEWER
[Symbol]	66. 1464" DIA. SANITARY SEWER
[Symbol]	67. 1488" DIA. SANITARY SEWER
[Symbol]	68. 1512" DIA. SANITARY SEWER
[Symbol]	69. 1536" DIA. SANITARY SEWER
[Symbol]	70. 1560" DIA. SANITARY SEWER
[Symbol]	71. 1584" DIA. SANITARY SEWER
[Symbol]	72. 1608" DIA. SANITARY SEWER
[Symbol]	73. 1632" DIA. SANITARY SEWER
[Symbol]	74. 1656" DIA. SANITARY SEWER
[Symbol]	75. 1680" DIA. SANITARY SEWER
[Symbol]	76. 1704" DIA. SANITARY SEWER
[Symbol]	77. 1728" DIA. SANITARY SEWER
[Symbol]	78. 1752" DIA. SANITARY SEWER
[Symbol]	79. 1776" DIA. SANITARY SEWER
[Symbol]	80. 1800" DIA. SANITARY SEWER
[Symbol]	81. 1824" DIA. SANITARY SEWER
[Symbol]	82. 1848" DIA. SANITARY SEWER
[Symbol]	83. 1872" DIA. SANITARY SEWER
[Symbol]	84. 1896" DIA. SANITARY SEWER
[Symbol]	85. 1920" DIA. SANITARY SEWER
[Symbol]	86. 1944" DIA. SANITARY SEWER
[Symbol]	87. 1968" DIA. SANITARY SEWER
[Symbol]	88. 1992" DIA. SANITARY SEWER
[Symbol]	89. 2016" DIA. SANITARY SEWER
[Symbol]	90. 2040" DIA. SANITARY SEWER
[Symbol]	91. 2064" DIA. SANITARY SEWER
[Symbol]	92. 2088" DIA. SANITARY SEWER
[Symbol]	93. 2112" DIA. SANITARY SEWER
[Symbol]	94. 2136" DIA. SANITARY SEWER
[Symbol]	95. 2160" DIA. SANITARY SEWER
[Symbol]	96. 2184" DIA. SANITARY SEWER
[Symbol]	97. 2208" DIA. SANITARY SEWER
[Symbol]	98. 2232" DIA. SANITARY SEWER
[Symbol]	99. 2256" DIA. SANITARY SEWER
[Symbol]	100. 2280" DIA. SANITARY SEWER

**INDEX MAP**

4 000 0 500 1000 1500 2000

DRAWING SCALE 1" = 400'

MAP KEY

GRAVITY SEWER

FORCE MAIN SEWER

LOCATION MAP SCALE 1" = 1000'

THE BOROUGH OF MADEIRA  
 WATER, SEWER, AND LIGHT DEPARTMENT  
 SANITARY SEWERS AND APPURTENANCES  
 INDEX MAP

DATE: 10/1/87

BY: [Signature]

CHECKED BY: [Signature]

SCALE: 1" = 400'



# APPENDIX C

# BOROUGH OF KANE SEWER MAP

DETAIL COMPUTER MAPS PROVIDED BY JAMES A. GOSWAMI, S.L.  
 DATE: 11/15/2018  
 PROJECT: KANE BORO SEWER MAP (11/15/2018)  
 ADDITIONAL INFORMATION/NOTES: CONTACTED BY THE TOWNSHIP  
 5777 MAIN ST. WILKES BARRE, PA 18250



LEGEND  
 Sewer Main  
 Sewer Lateral  
 Manhole  
 Catch Basin  
 Storm Sewer  
 Street  
 Property Line  
 Easement  
 Right of Way  
 Other

WETMORE TOWNSHIP

WETMORE TOWNSHIP

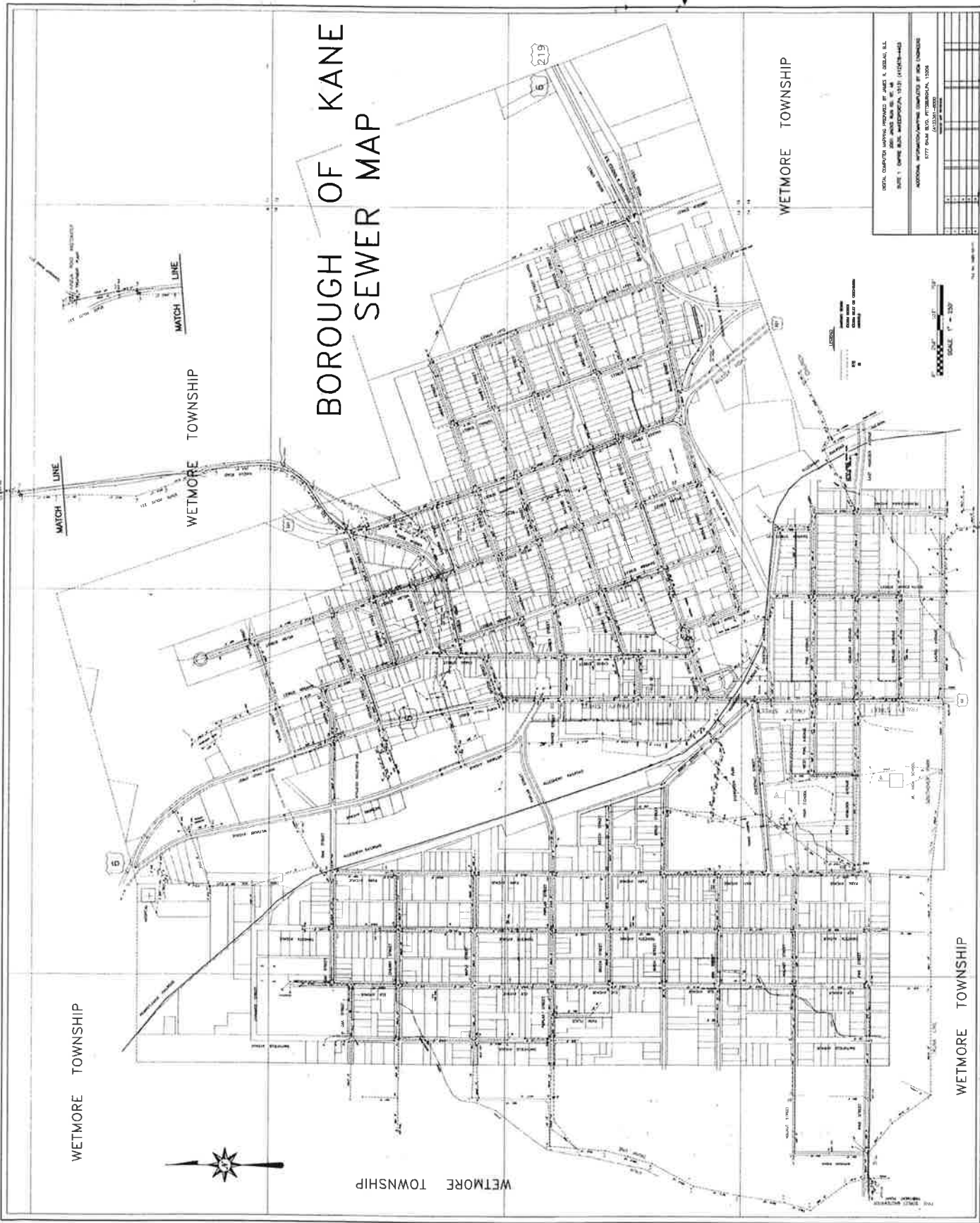
WETMORE TOWNSHIP

WETMORE TOWNSHIP

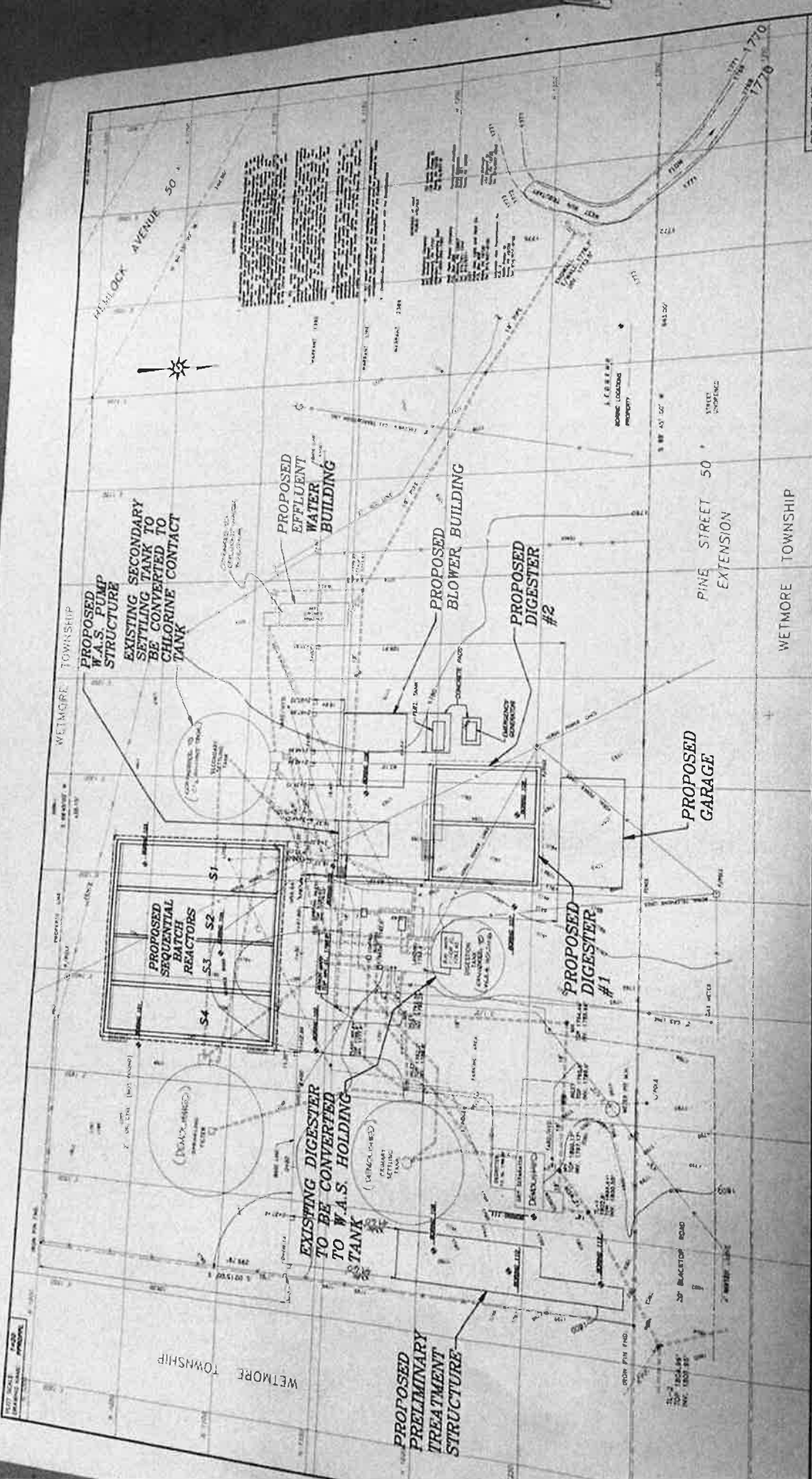
WETMORE TOWNSHIP

MATCH LINE

MATCH LINE



# APPENDIX D



<b>CONTRACT NO. 1-92</b> BOROUGHS OF KANE AUTHORITY WILKES COUNTY RECORD DEPARTMENT PINE STREET WASTEWATER TREATMENT PLANT EXISTING PIPING, PROPERTY AND BORING PLAN	
APPROVED [Signature] DATE: DECEMBER 1991	SCALE AS SHOWN
DRAWN BY PROJECT NO.	CHECKED BY DATE
<b>BCM BCM Engineers Inc.</b> One Plymouth Meeting, Plymouth Meeting, PA 19042 5777 Route 100, Philadelphia, PA 19106	
SHEET NO. 1 OF 1	DATE: 11/91

# APPENDIX E



**Application of Pennsylvania-American Water Company for Acquisition of  
the Wastewater Assets of the Borough of Kane Authority  
66 Pa. C.S. § 1329  
Application Filing Checklist – Water/Wastewater  
Docket No. A-2019-3014248**

15. Plant in Service.
- b. Provide a list of all non-depreciable property such as land and rights-of-way.

**AMENDED RESPONSE:**

- b. Please see Schedule 4.1(l)(i) and (ii) of the **CONFIDENTIAL** Appendix A-24-a.

**Application of Pennsylvania-American Water Company for Acquisition of  
the Wastewater Assets of the Borough of Kane Authority  
66 Pa. C.S. § 1329  
Application Filing Checklist – Water/Wastewater  
Docket No. A-2019-3014248**

15. Plant in Service.
- c. State the DEP-permitted productive or treatment capacity of sources or treatment facility and the pipe sizes and material used for construction for all transmission and distribution or collection facilities.

**RESPONSE:**

- c. See Direct Testimony of Michael J. Guntrum, PAWC Statement No. 2, at pp. 2-6 enclosed at **Appendix A-14-a**. See also the Engineer's Assessment at Appendix A-15-a.

**Application of Pennsylvania-American Water Company for Acquisition of  
the Wastewater Assets of the Borough of Kane Authority  
66 Pa. C.S. § 1329  
Application Filing Checklist – Water/Wastewater  
Docket No. A-2019-3014248**

15. Plant in Service.

d. State the elevations of major facilities and service areas.

**RESPONSE:** .

d. See maps attached at **Appendix A-16-a through Appendix A-16-f**. See also Direct Testimony of Michael J. Guntrum, PAWC Statement No. 2 at p. 7 attached as **Appendix A-14-a**.

**Application of Pennsylvania-American Water Company for Acquisition of  
the Wastewater Assets of the Borough of Kane Authority  
66 Pa. C.S. § 1329  
Application Filing Checklist – Water/Wastewater  
Docket No. A-2019-3014248**

15. Plant in Service.
- e. State the approximate time schedule for installation of the various component facilities.

**RESPONSE:**

- e. See the Engineer's Assessment at Appendix A-15-a.

**Application of Pennsylvania-American Water Company for Acquisition of  
the Wastewater Assets of the Borough of Kane Authority  
66 Pa. C.S. § 1329  
Application Filing Checklist – Water/Wastewater  
Docket No. A-2019-3014248**

15. Plant in Service.

f. State the tentative journal entries for booking the acquisition.

**RESPONSE:**

f. See below:

	<u>Debit</u>	<u>Credit</u>
Acct. 101 - Utility Plant in Service	\$33,612,710	
Acct. 108 – Accumulated Depreciation	(\$16,052,710)	
Acct. 232 - Short Term Debt		\$17,560,000