



August 13, 2019

Via FedEx – Tracking No. 7759 7562 4736

Rosemary Chiavetta, Secretary
Commonwealth of Pennsylvania
Pennsylvania Public Utility Commission
400 North Street, Filing Room
Commonwealth Keystone Building
Harrisburg, PA 17105

Re: *TriEagle Energy, LP, A-2010-2180376*

Dear Secretary Chiavetta:

TriEagle Energy, LP ("TriEagle") respectfully submits the updates required under 52 Pa. Code §54.34 and §62.105. On July 15, 2019 TriEagle's ultimate parent company Crius Energy Trust was acquired by Vistra Energy Corp. through its wholly-owned subsidiary Vienna Acquisition B.C. Ltd. (the "Transaction"). As a result of the Transaction, Vistra Energy Corp. is now the ultimate parent company of TriEagle. Please see the organization charts in Attachment A that were submitted as part of the FERC application process showing the ownership structure before and after the Transaction. The Transaction has also resulted in a few material changes to the information originally provided in TriEagle's application and past updates. Please find those changes detailed below:

Primary Address:

6555 Sierra Drive
Irving, Texas 75039

Pennsylvania Registered Agent:

Capitol Corporate Services, Inc.
125 Locust Street
Harrisburg, PA 17101

Regulatory Contact:

David Ricketts, Director – Retail Policy
1005 Congress Ave, Suite 750
Austin, Texas 78701



(512) 349-6441
david.ricketts@vistraenergy.com

Contacts for Consumer Service and Complaints:

Jim Vermeulen, Manager – Customer Advocacy Services
6555 Sierra Drive
Irving, Texas 75039
(972) 868-3945
jim.vermeulen@vistraenergy.com

Name and Address of Officers:

Please see Attachment B for a list of all of TriEagle’s officers. The business address for all officers is: 6555 Sierra Drive, Irving, Texas 75039.

Affiliates:

Please see Attachment C for a list of all TriEagle’s affiliates. The address for all affiliates is: 6555 Sierra Drive, Irving, Texas 75039.

If you have any questions regarding these changes, please do not hesitate to contact me by phone at 203-663-5087 or by email at mtrinka@criusenergy.com.

Sincerely,

A handwritten signature in cursive script that reads "Martine Trinkka".

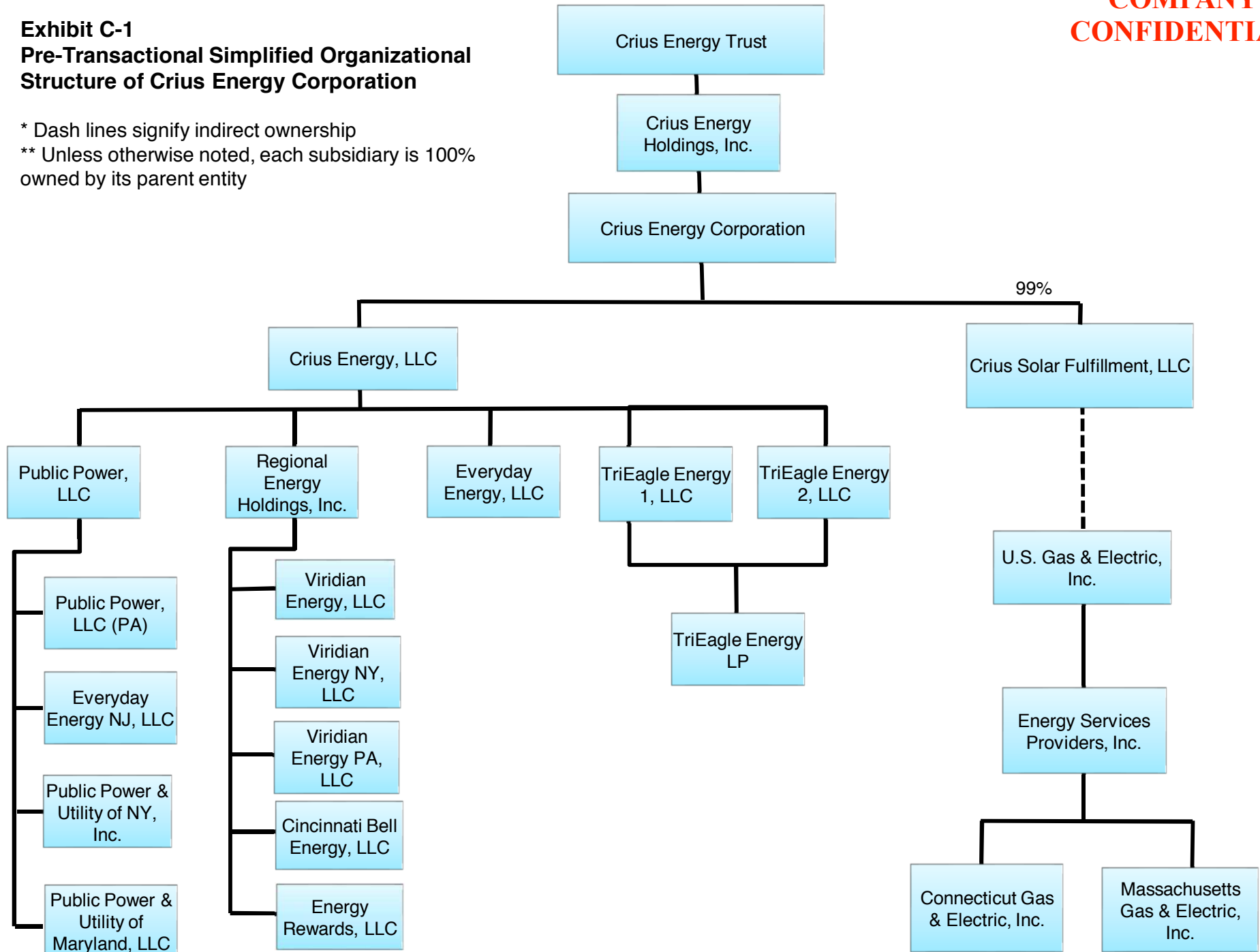
Martine Trinkka
Counsel

ATTACHMENT A

**COMPANY
CONFIDENTIAL**

Exhibit C-1 Pre-Transactional Simplified Organizational Structure of Crius Energy Corporation

* Dash lines signify indirect ownership
** Unless otherwise noted, each subsidiary is 100% owned by its parent entity



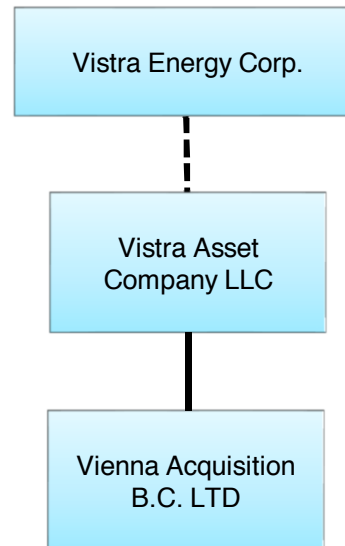
ATTACHMENT A

**COMPANY
CONFIDENTIAL**

Exhibit C-2 Pre-Transactional Simplified Organizational Structure of Vistra Energy Corp.

* Dash lines signify indirect ownership

** Unless otherwise noted, each subsidiary is 100%
owned by its parent entity

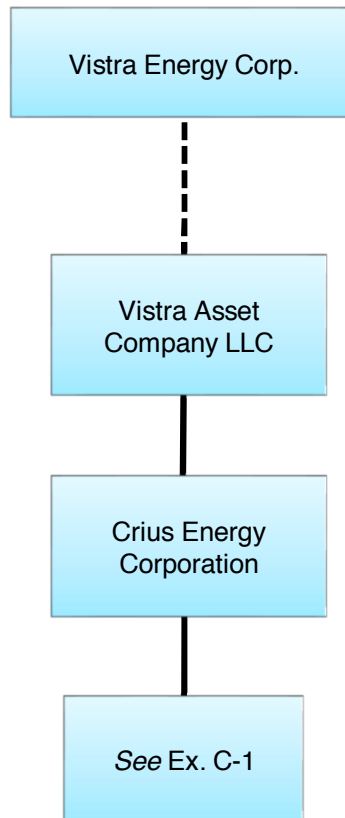


ATTACHMENT A

**COMPANY
CONFIDENTIAL**

Exhibit C-3 Post-Transactional Simplified Organizational Structure

- * Dash lines signify indirect ownership
- ** Unless otherwise noted, each subsidiary is 100% owned by its parent entity



NAME	TITLE
OFFICERS	
Morgan, Curtis A.	President and Chief Executive Officer
Burke, James A.	Executive Vice President and Chief Operating Officer
Campbell, David A.	Executive Vice President and Chief Financial Officer
Kirby, Carrie L.	Executive Vice President and Chief Administrative Officer
Moore, Stephanie Zapata	Executive Vice President, General Counsel, Chief Compliance Officer, and Corporate Secretary
Howard, Carla A.	Senior Vice President and General Tax Counsel
Moldovan, Kristopher E.	Senior Vice President and Treasurer
Hudson, Scott A.	Senior Vice President
Muscato, Stephen J.	Senior Vice President
Dobry, Christy	Vice President and Controller
Kelly, Daniel J.	Vice President and Associate General Counsel
Vazquez, Gabe	Vice President and Associate General Counsel
Morrow, Claudia	Vice President
Bhate, Darshan	Vice President
Castro, Gabriel R.	Vice President
Duessel, John S.	Vice President
Seiger, Sydney C.	Vice President
Sen, Samudra	Vice President
Chen, Max	Assistant Treasurer
Mihecoby, Allen	Assistant Secretary

ATTACHMENT C

Company Confidential

Affiliate	State(s)	License Number	E/G	ISO	Service Territory
Viridian Energy, LLC	Connecticut	Docket #09-04-15	Electric	ISO-NE	Eversource Energy (CL&P) United Illuminating
	Massachusetts	License #CS-076	Electric	ISO-NE	Fitchburg (Unitil) Mass Electric (National Grid-MA) Nantucket Electric (National Grid) NGrid - MA Cambridge (NStar Electric) Boston Edison (NStar Electric) WMECO Commonwealth Electric (NStarCom)
	New Hampshire	License # 15-478	Electric	ISO-NE	Eversource Unitil
	Rhode Island	Division Docket D-96-6 (P6)	Electric	ISO-NE	National Grid RI (NGRID Narragansett)
Viridian Energy NY, LLC	New York	ESCO Code VRID	Electric	NYISO	Con Edison Orange & Rockland Central Hudson Niagara Mohawk (NIMO, National Grid) NYSEG Rochester Gas & Electric
			Gas		Sell under VEPA
Viridian Energy PA, LLC	California	CTA NO: A0003	Gas		PG&E
	Delaware	Order # 8178	Electric	PJM	Delmarva Power DE
	D.C.	Order # 16446	Electric	PJM	Pepco DC
		Order # 16966	Gas		Washington Gas Light Co.
	Illinois	Docket #13-0135	Electric	PJM MISO	ComEd Ameren
		Docket #15-0376	Gas		North Shore Gas Peoples Gas
	Indiana	N/A	Gas		NIPSCO
	Maryland	License No. IR-1840	Electric	PJM	BG&E Pepco MD Delmarva (commercial only)
		License No. IR-2837	Gas		Washington Gas Light Co. BG&E
	Michigan	Case No. U-18001	Gas		
	Massachusetts	License # GS-060	Gas		NGrid (commercial and industrial only)
	New Jersey	License # ESL-0084	Electric	PJM	ACE JCP&L PSE&G Rockland Electric
		License # GSL-0108	Gas		New Jersey Natural Gas PSE&G South Jersey Gas Elizabethtown Gas
	New York	ESCO Code VRPA	Gas		Central Hudson

ATTACHMENT C

Company Confidential

					Con Edison KeySpan LI (National Grid- LIG) KeySpan Energy NY (National Grid) Niagara Mohawk (NIMO, National Grid) National Fuel Gas NYSEG Orange & Rockland RG&E
			Electric		Service under VENY
	Ohio	Certificate #13-742E(2)	Electric	PJM	Duke Toledo Edison (First Energy) Cleveland Electric (First Energy) Ohio Edison (First Energy) Columbus Southern Power (AEP) Ohio Power (AEP) Dayton Power & Light
		Certificate #13-324G(2)	Gas		Duke
	Pennsylvania	Docket #A-2009-2145794	Electric	PJM	Allegheny Power PA Duquesne Light PECO Energy Penelec Pennsylvania Power & Light (PPL) Metropolitan Edison (Met Ed- First Energy) Penn Power West Penn Power
		Docket #A-2010-2203042	Gas		PECO Energy
Virginia	License # G-33	Gas		Columbia Gas Virginia Washington Gas Light Co.	
<i>Viridian Energy (TriEagle Energy LP)</i>	Texas TriEagle Energy LP d/b/a Viridian Energy	Certificate# 10064	Electric	ERCOT	CenterPoint Energy Oncor AEP North AEP Central Texas New Mexico Power Sharyland Utilities Nueces Sharyland McAllen
Viridian Network LLC	Delaware	Order #8215	Electric/Br oker		
	D.C.	Order # 16965	Electric/Br oker		
		Order # 16965	Gas/Broker		
Cincinnati Bell Energy, LLC	Ohio	Certificate #13-630E(2)	Electric	PJM	Duke
		Certificate #11-218G(3)	Gas		Duke

ATTACHMENT C

Company Confidential

Energy Rewards, LLC	Maine	Docket #2011-264	Electric	ISO-NE	Central Maine Power Bangor Hydro Electric
		Docket# 2012-338	Broker		
	New Hampshire	DM 14-204	Electric	ISO-NE	Public Service of NH Unitil (Not serving customers)
Everyday Energy, LLC	California	CTA NO: CTA0002	Gas		PG&E
	Connecticut Everyday Energy, LLC d/b/a Energy Rewards	Docket# 14-06-08	Electric	ISO-NE	
	D.C.	Order#18071	Electric	PJM	
		Order#18071	Gas		
	Delaware d/b/a Energy Rewards	2015601011	Gas/Electric		
	Georgia, Everyday Energy GA, LLC d/b/a Energy Rewards	Interim Certificate No.: GM-43	Gas		
	Illinois Everyday Energy, LLC d/b/a Energy Rewards	Docket # 13-0137	Electric	PJM MISO	ComEd Ameren
		Docket # 12-0396	Gas		Nicor Gas Company Peoples Gas Light and Coke Co. North Shore Gas
	Indiana Everyday Energy, LLC d/b/a Value Power & Gas	N/A	Gas		NIPSCO
	Massachusetts	CS-161	Electric	ISO-NE	National Grid NSTAR Electric WMECo Unitil
	Maryland, Everyday Energy, LCC d/b/a Energy Rewards	IR-3618/ ML 178769	Electric	PJM	BG&E Delmarva Pepco MD Potomac Edison Choptank Electric Cooperative Southern Maryland Electric Cooperative
		IR-3616/ ML 178768	Gas		BG&E Chesapeake Utilities Pivotal Utility Holdings, Inc. Columbia Gas of Maryland, Inc. Washington Gas Light Company
	Michigan, Everyday Energy,	Case No. U-18000	Gas		

ATTACHMENT C

Company Confidential

	LLC d/b/a Energy Rewards				
	New Hampshire	Docket # DM 15-478	Electric	ISO-NE	Eversource Unitil New Hampshire PUC
	New York	ESCO Code FTRE	Electric	NYISO	Rochester Gas & Electric Niagara Mohawk (National Grid) Orange & Rockland NYSEG Central Hudson
		ESCO Code FTRE	Gas		Rochester Gas & Electric Orange & Rockland Central Hudson Niagara Mohawk (National Grid) NYSEG National Fuel Gas
	Ohio Everyday Energy, LLC d/b/a Value Power & Gas	Certificate #12-523E(2)	Electric	PJM	AEP Ohio Power Dayton Power & Light Columbus Southern Power (AEP) Ohio Edison (FirstEnergy) Toledo Edison (FirstEnergy) Cleveland Illuminating Co. (FirstEnergy)
		Certificate #11-226G(3)	Gas		Columbia Gas of Ohio Dominion East Ohio Vectren Gas
	Pennsylvania Everyday Energy, LLC d/b/a Energy Rewards	Docket# A-2012-2314724	Electric	PJM	Met Edison (First Energy) Penn Elec (First Energy) Penn Power (First Energy) PPL West Penn (First Energy) UGI Utilities Inc. – Electric Division PECO Duquesne
		Docket# A-2012-2318216	Gas		UGI Utilities Gas Division UGI Penn Natural Gas, Inc. UGI Central Penn Gas, Inc. Columbia Gas National Fuel Gas
	New Jersey Everyday Energy, LLC d/b/a Energy Rewards	ESL-0174	Electric	PJM	We service customers under Everyday Energy NJ, LLC (see below)
		GSL-0152	Gas		
Everyday Energy NJ, LLC dba Energy Rewards formerly Public Power & Utility of New Jersey, LLC	New Jersey	License #ESL-0086	Electric	PJM	ACE JCP&L PSE&G
		License #GSL-0094	Gas		New Jersey Natural Gas South Jersey Gas PSE&G Elizabethtown Gas

ATTACHMENT C

Company Confidential

TriEagle / Energy Rewards d/b/A Rewards (TriEagle Energy LP)	Texas TriEagle Energy LP d/b/a Energy Rewards	Certificate# 10064	Electric	ERCOT	CenterPoint Energy Oncor AEP North AEP Central Texas New Mexico Power Sharyland Utilities Nueces Sharyland McAllen
TriEagle Energy LP	Illinois	Docket# 14-0302	Electric	PJM	ComEd
	Maryland	License No. IR-3127	Electric	PJM	Delmarva BG&E Pepco MD
	New Jersey	License No. ESL-0134	Electric	PJM	JCP&L ACE PSE&G
	Ohio	License No. 14-806E(2)	Electric	PJM	Columbus Southern Power Ohio (AEP) Ohio Power (AEP) Cleveland Electric Illuminating Dayton Power and Light Duke Ohio Edison Toledo Edison
	Pennsylvania	A-2010-2180376	Electric	PJM	West Penn Power (First Energy) Met Edison (First Energy) Penelec (First Energy) PECO PPL Duquesne Light Company
	Texas	Certificate# 10064	Electric	PJM	AEP Texas Central Company AEP Texas North Company CenterPoint Energy Houston Electric LLC Oncor Electric Delivery Company LLC Sharyland Utilities LP McAllen Sharyland Utilities Texas-New Mexico Power Co
Public Power, LLC	Connecticut	Docket #07-06-13	Electric	ISO-NE	Connecticut Light & Power United Illuminating
	D.C.	Order #16726	Electric	PJM	Pepco DC
	Illinois	Order #12-0167	Electric	PJM	ComEd
				MISO	Ameren
	Massachusetts	CS-160	Electric	ISO-NE	Boston Edison (NStar Electric) Cambridge (Nstar Electric) Commonwealth (NStar Electric) National Grid MA WMECO
New York	ESCO Code PUPU	Electric	NYISO	Con Edison Orange & Rockland NYSEG	

ATTACHMENT C

Company Confidential

					Rochester Gas & Electric Central Hudson Niagara Mohawk (NIMO, National Grid)
		ESCO Code PUPU	Gas		Con Edison Orange & Rockland National Fuel Gas KEYSPAN Energy NY (National Grid) Niagara Mohawk (NIMO, National Grid) Central Hudson NYSEG Rochester Gas & Electric
	Ohio	Certificate #11-418E(2)	Electric	PJM	Duke AEP Ohio Power AEP Columbus Southern Power Dayton Power and Light
	Rhode Island	Docket #D-96- 6 (M5)	Electric	ISO- NE	Cleveland Illuminating Company Toledo Edison Ohio Edison
Public Power & Utility of Maryland, LLC	Maryland	License No. IR- 1781	Electric	PJM	BG&E Pepco MD Delmarva Power (commercial only)
Public Power, LLC (PA) Entity #3911142	Pennsylvania	Docket #A- 2009-2143245	Electric	PJM	Duquesne Light PECO Energy Pennsylvania Power & Light MetEd (First Energy) West Penn Power (First Energy) Penelec (First Energy) Penn Power (First Energy)
U. S. Gas & Electric, Inc.	Illinois d/b/a • Illinois Gas & Electric • USG&E • U.S. Gas & Electric • USGE • ILGE • ILG&E	Docket 16- 0201	Gas		Nicor, Peoples, North Shore – residential and small commercial customers; Ameren – small commercial customers
	Indiana	N/A	Gas		NIPSCO
	Maryland d/b/a Maryland Gas & Electric	License No, IR- 1744	Gas	PJM	All territories Residential, commercial and industrial customers

ATTACHMENT C

Company Confidential

	Michigan	Case No. U-15490	Gas		All territories
	New Jersey d/b/a New Jersey Gas & Electric	GSL-0082	Gas		All territories
	New York d/b/a New York Gas & Electric	ESCO Code USGE	Gas	NYISO	All territories
	Ohio	Certificate No. 08-139G(5)	Gas	PJM	All territories
	Pennsylvania d/b/a Pennsylvania Gas & Electric	Docket No. A-2009-2121686	Gas	PJM	UGI-Penn Natural Gas, Columbia Gas, Valley Energy, T. W. Phillips Gas & Oil Co., Carnegie Natural Gas, Philadelphia Gas works, PECO, Equitable Gas Company, Peoples
Connecticut Gas & Electric, Inc.	Connecticut	Docket 11-06-11	Electric	ISO-NE	Eversource United Illuminating (Residential, commercial and industrial)
	D. C. d/b/a DC Gas & Electric	Order No. 17300	Electric	PJM	All territories
Energy Services Providers, Inc.	Illinois d/b/a Illinois Gas & Electric	Docket No. 11-0275	Electric	PJM	ComEd, Ameren, MidAmerican Energy, Mt. Carmel Public Utility Company, Residential and nonresidential retail customers
				MISO	
	Maryland d/b/a Maryland Gas and Electric	License No. IR-2110	Electric	PJM	Residential, commercial and industrial customers
	Michigan d/b/a Michigan Gas & Electric	Case No. U-16912	Electric		All territories

ATTACHMENT C

Company Confidential

	New Jersey d/b/a New Jersey Gas & Electric	ESL-0095	Electric		All territories
	New York d/b/a New York Gas & Electric	ESCO Code: ESP	Electric	NYISO	All territories
	Ohio d/b/a Ohio Gas & Electric d/b/a U. S. Gas & Electric	Certificate No. 12-438E(3)	Electric	PJM	All territories
	Pennsylvania d/b/a Pennsylvania Gas & Electric	Docket No. A- 2010-2212421	Electric	PJM	Allegheny Power, Duquesne, PECO, PPL, Pike County, UGI, Citizens', MetEd, Penelec, Pennsylvania Power Co., Wellsboro Electric Co.
Massachusetts Massachusetts Gas & Electric, Inc. f/k/a Energy Services Providers, Inc.	Maine d/b/a Maine Gas & Electric	Docket No. 2017-00075	Electric	ISO- NE	All territories
	Massachusetts	CS-066	Electric	ISO- NE	All territories
Illinois Power Marketing Company d/b/a Homefield Energy	Illinois	Docket# 14-0015	Electric	MISO / PJM	Ameren, ComEd
Dynegy Energy Services, LLC	Illinois: d/b/a Dynegy d/b/a Brighten Energy d/b/a Better Buy Energy d/b/a True Fit Energy d/b/a Honor Energy	Docket# 14-0455	Electric	MISO / PJM	ComEd
Dynegy Energy Services (East), LLC	Ohio: d/b/a Dynegy d/b/a Brighten Energy d/b/a Better Buy Energy d/b/a True Fit Energy d/b/a Honor Energy	Certificate No. 04-124E	Electric	PJM	All territories
	Pennsylvania: d/b/a Dynegy d/b/a Brighten Energy d/b/a Better Buy Energy d/b/a True Fit Energy d/b/a Honor Energy	Docket No. A- 2010- 22199236	Electric	PJM	Duquesne, PECO, PPL, UGI, MetEd, Penelec, Pennsylvania Power Co., West Penn Power

ATTACHMENT C

Company Confidential

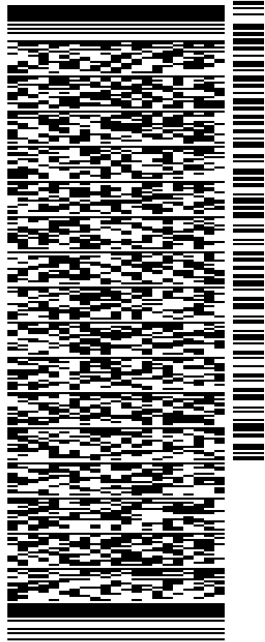
	Massachusetts: d/b/a Dynegy	CS-166	Electric	ISO-NE	All territories
Dynegy Marketing and Trade	Maine: d/b/a DMT	Docket No. 2010-00091	Electric (station load only)	ISO-NE	Bangor Hydro Electric
TXU Energy Retail Company LLC	Texas: d/b/a TXU	REP ID 10004	Electric	ERCOT	All territories
Value Based Brands LLC	Texas: d/b/a Express Energy d/b/a 4Change Energy	REP ID 10041	Electric	ERCOT	All territories

ORIGIN ID: YAKA (203) 663-5089
LEGAL DEPARTMENT
CRIUS ENERGY
538 CONNECTICUT AVENUE
6TH FLOOR
NORWALK, CT 06884
UNITED STATES US

SHIP DATE: 20AUG19
ACTWGT: 0.10 LB
CAD: 105322594IN/ET4160
BILL SENDER

TO **AMANDA N. EAGLE**
PA PUBLIC UTILITY COMMISSION
400 NORTH STREET
KEYSTONE BLDG 2ND FL
HARRISBURG PA 17120
(717) 712-7177 REF: LEGAL - M TRINKA
INV: DEPT:
PO:

567J3/E9E7/05A2

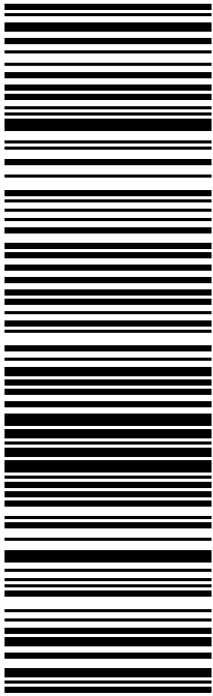


TRK# 7760 3036 8870
#0201

FRI - 23 AUG 4:30P
EXPRESS SAVER

SK MDTA

17120
PA-US MDT



After printing this label:

1. Use the 'Print' button on this page to print your label to your laser or inkjet printer.
2. Fold the printed page along the horizontal line.
3. Place label in shipping pouch and affix it to your shipment so that the barcode portion of the label can be read and scanned.

Warning: Use only the printed original label for shipping. Using a photocopy of this label for shipping purposes is fraudulent and could result in additional billing charges, along with the cancellation of your FedEx account number.

Use of this system constitutes your agreement to the service conditions in the current FedEx Service Guide, available on fedex.com. FedEx will not be responsible for any claim in excess of \$100 per package, whether the result of loss, damage, delay, non-delivery, misdelivery, or misinformation, unless you declare a higher value, pay an additional charge, document your actual loss and file a timely claim. Limitations found in the current FedEx Service Guide apply. Your right to recover from FedEx for any loss, including intrinsic value of the package, loss of sales, income interest, profit, attorney's fees, costs, and other forms of damage whether direct, incidental, consequential, or special is limited to the greater of \$100 or the authorized declared value. Recovery cannot exceed actual documented loss. Maximum for items of extraordinary value is \$1,000, e.g. jewelry, precious metals, negotiable instruments and other items listed in our Service Guide. Written claims must be filed within strict time limits, see current FedEx Service Guide.