



7/1/2020

Public Utilities Commission
P.O. Box 3265
Harrisburg, PA 17105-3265

RE: Notification of Occupation

To Whom It May Concern,

On behalf of Comcast Cable Communications Management LLC, we submit the enclosed notification for your review. This is in reference to a proposed wire occupation of Pennsylvania Northeast Regional Railroad Authority and Pennsylvania public right-of-way property. Enclosed you will find one (1) plan and profile draft of the proposed facilities, one (1) Exhibit B, one (1) Certificate of Service, and one (1) Verification.

The proposed Comcast facilities will be at the following location:

- Crossing Number: 800' E of 265869P
- Railroad Milepost: 800' E of 7.59
- Railroad Division: Atlantic
- Railroad Subdivision/District: Lehigh
- Location of Facilities: 41.368, -75.687

Please send all responses to AmeriComm, LLC at the below contact information.

Sincerely,

Tabatha Smith
Permit Coordinator
AmeriComm, LLC
21 State Avenue, Suite 1
Carlisle, PA 17013
717 408 9112
tabatha@americomm-llc.com

**BEFORE
PENNSYLVANIA PUBLIC UTILITY COMMISSION**

In Re: Application of Comcast Cable Communications Management, LLC for approval of the installation of a communication facility where Montage Mountain Road crosses at grade with the tracks of the Pennsylvania Northeast Regional Railroad Authority. Located in the municipality of Moosic Borough and the County of Lackawanna.
AAR DOT; 265869P
Comcast identifier; KE-JB216152 (MONTAGE MTN RD)

**Application
Docket No.**

To Pennsylvania Public Utility Commission:

The name and address of applicant are:

Comcast Cable Communications Management, LLC
21 State Avenue, Suite 1
Carlisle, PA 17013

The name and address of applicant's attorney are:

Comcast Cable Communication, Inc.
1701 John F. Kennedy Boulevard
Philadelphia, PA 19103
ATTN: General Counsel

3. Comcast wishes to construct a communication facility in Moosic Borough, Lackawanna County. To complete the system, Comcast must work within the Pennsylvania public right-of-way of Montage Mountain Road. The communication facility will be placed above ground from utility pole #56598 N44473 9 FEYI 39 to utility pole #56594 N44455 10 FEYI 40.
4. The proposed construction will be a communication facility placed between utility poles on east side of the railroad crossing. The fiber optic communication facility will be aerial. The railroad intersects Montage Mountain Road at grade. See attached Exhibit "A" plan and profile draft. The approximate start and completion date for this project is August 3rd, 2020.
5. The public utilities, municipalities, corporations and property owners concerned in, or affected by, the crossing alteration are identified in Exhibit "B" attached hereto.
6. Because the aerial communication line will have no impact on rail traffic or the motoring public, no vehicle use data has been developed in connection with this application. Comcast will follow its normal procedure for construction of a communication facility within a public right-of-way along a public roadway. Comcast uses construction procedures including the use of warning devices and flagmen to maintain, as nearly as possible, the normal flow of vehicular traffic.

7. The expected cost for the construction procedure is \$1000. Comcast will pay all costs of construction of the aerial communication line, as well as, be responsible for installing, maintaining and inspecting the facilities.
8. The alteration is necessary or proper for the following reasons: to provide adequate, efficient, and reasonable communication facilities to the public in Lackawanna County and surrounding areas.

Wherefore, applicant prays your Honorable Commission to approve the application:

Respectfully submitted,

A handwritten signature in cursive script, appearing to read "Tabatha Smith", written over a horizontal line.

(Signature of Applicant)

1.36. Verification.

(a) Applications, petitions, formal complaints, motions and answers thereto containing an averment of fact not appearing of record in the action or containing a denial of fact shall be personally verified by a party thereto or by an authorized officer of the party if a corporation or association. Verification means a signed written statement of fact supported by oath or affirmation or made subject to the penalties of 18 Pa. C.S. §4904 (relating to unsworn falsification to authorities). If verification is required, notarization is not necessary.

(b) The Verification form should comply substantially with the following:

VERIFICATION

I, Tabatha Smith, hereby state that the facts above set forth are true and correct (or are true and correct to the best of my knowledge, information and belief) and that I expect to be able to prove the same at a hearing held in this matter. I understand that the statements herein are made subject to the penalties of 18 Pa. C.S. § 4904 (relating to unsworn falsification to authorities).

Date: **July 1, 2020**

Tabatha Smith
(Signature)

CERTIFICATE OF SERVICE

I, Tabatha Smith, of Comcast hereby certify that I have this day, 07-01-2020, served a true copy of the foregoing document upon the participants, listed below, in accordance with the requirements of § 1.54 (*relating to service by participant*).

Signature:  _____

Pennsylvania Northeast Regional Railroad
Authority
Attn: Charlene Wagner Doyle
280 Cliff Street
Scranton, PA 18503

Moosic Borough Building
715 Main Street
Moosic, PA 18507

Lackawanna County Government Center
ATTN: Planning Commission
123 Wyoming Avenue
Scranton, PA 18503

Public Utilities Commission
PO BOX 3265
Harrisburg, PA 17105-3265

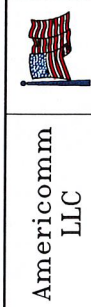
Americomm, LLC
21 State Avenue, Suite 1
Carlisle, PA 17013

PPL Electric Utilities
600 Larch Street
Scranton, PA 18509

PennDOT
ATTN: Gary Fawver, P.E. Chief
Right of Way & Utilities Division
Bureau of Design
PO BOX 3362
Harrisburg, PA 17105-3362

PennDOT
ATTN: Governor's Office of General Counsel
Department of Transportation
Office of Chief Counsel
Real Property Division - Utility Section
PO BOX 8212
Harrisburg, PA 17105-8212

PennDOT Engineering Dist. 4
Attn: Permit Office
55 Keystone Industrial Park Road
Dunmore, PA 18512



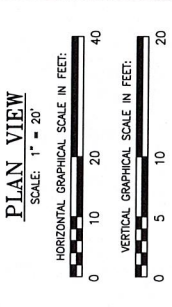
Americom
LLC

8 Brookwood Ave.
Suite 1
Carlisle, PA 17015

comcast
corporation

MONTAGE MOUNTAIN RD
MOOSIC, PA 18607

DRAWN _____
FIELD _____
DESIGNED _____
APPROVED _____



COMCAST

3 Moore Road
Wallingford, PA 19086

AERIAL CABLE CROSSING
OVER LUZERNE SUSQUETHANNA
RAILWAY AT MONTAGE
MOUNTAIN ROAD
MOOSIC BORO, LACKAWANNA CO., PA

AAR/DOT #2658869P

LOCATION: MONTAGE MOUNTAIN ROAD
MOOSIC BOROUGH, PA

LATITUDE: 41.368618

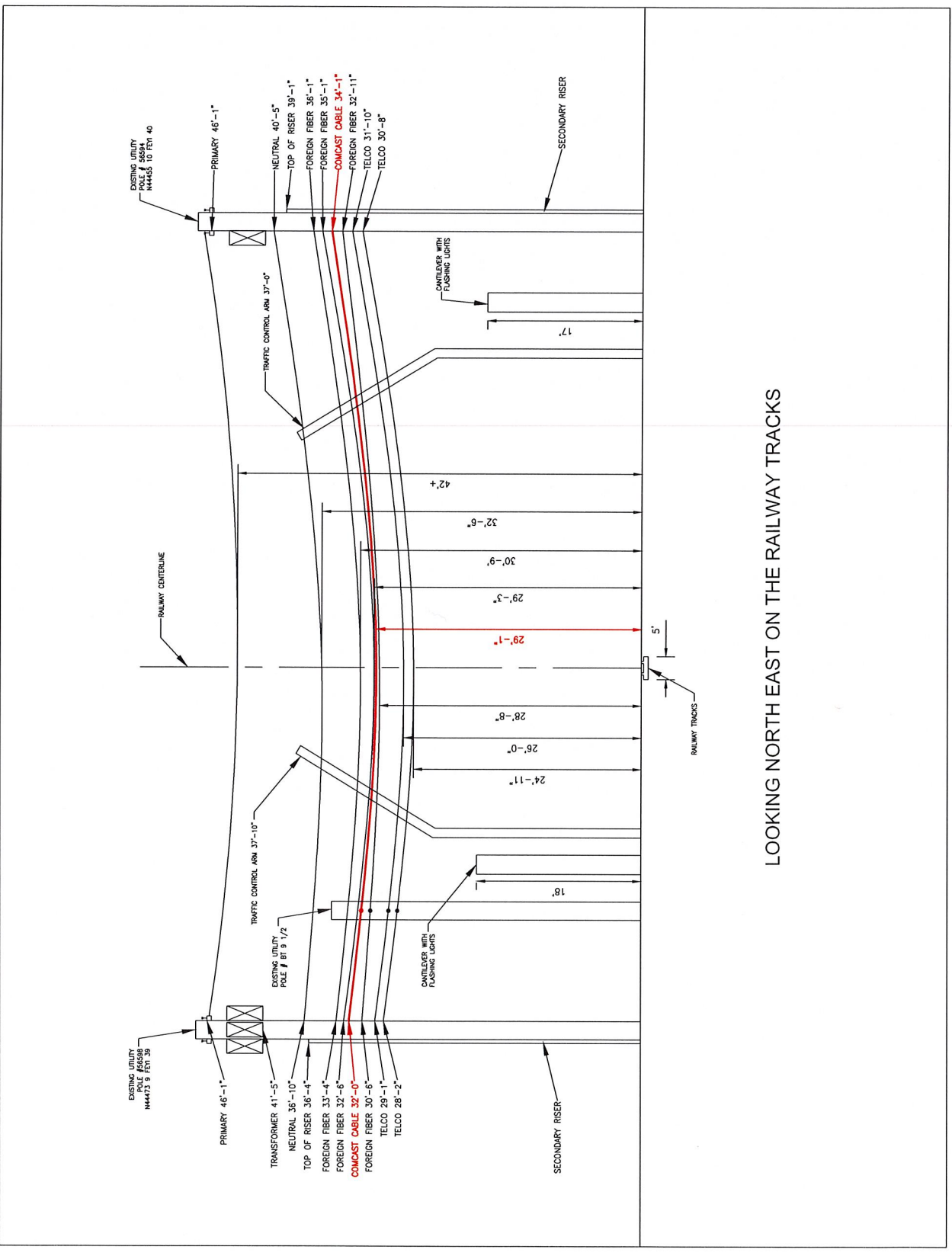
LONGITUDE: -76.887731

DRAWING NO: SHEET 1 OF 2

DRAWING DATE: 5/21/2020

DRAWING SCALE: 1 INCH = 20 FEET /10 FEET

SHEET 2 OF 2



LOOKING NORTH EAST ON THE RAILWAY TRACKS