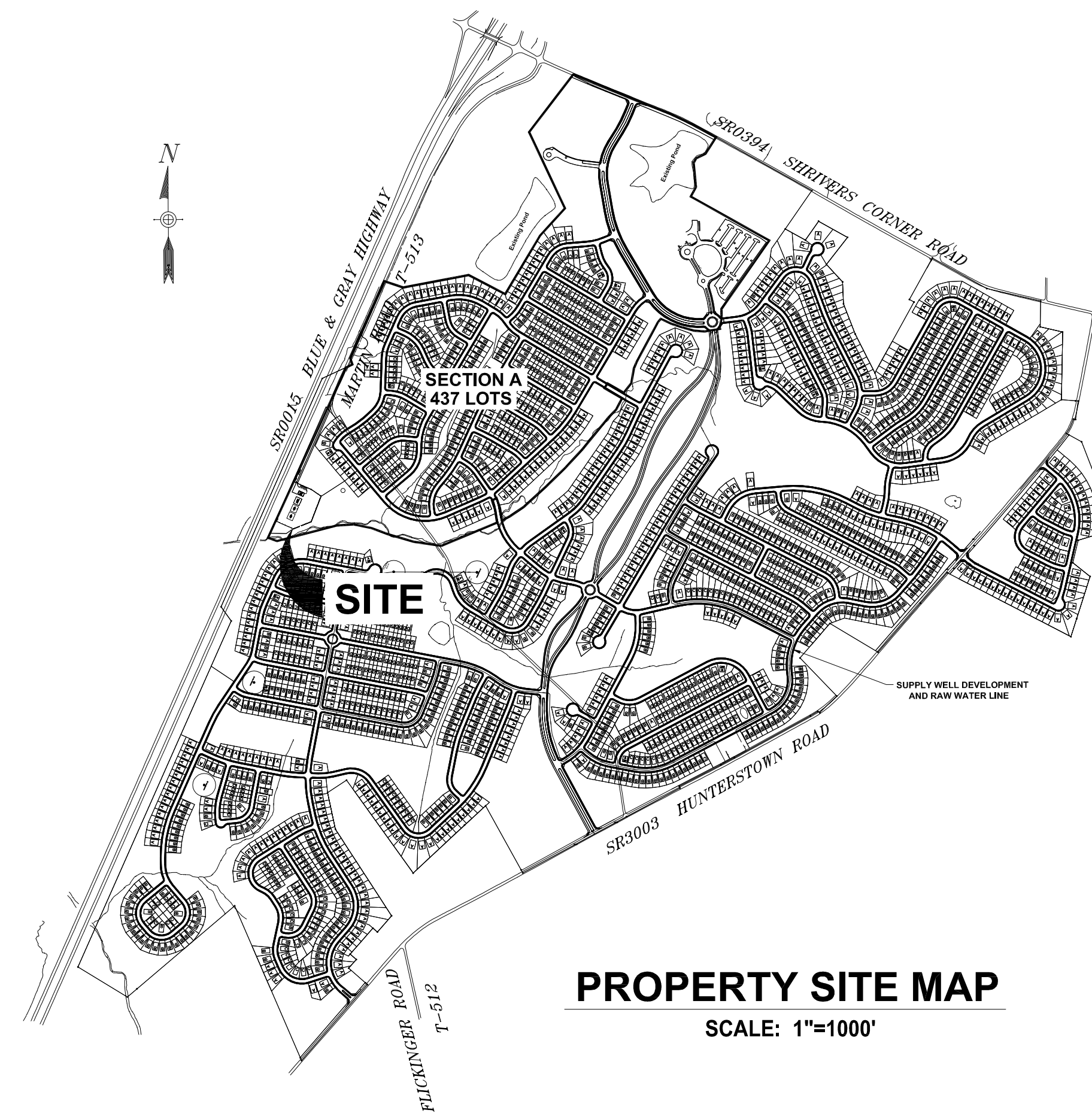


GETTYSBURG COMMONS (ROCK CREEK FARM)

100,000 GPD WASTEWATER TREATMENT PLANT / CONTROL BUILDING

REVIEWED
By Erik Vranich at 7:47 am, Jul 31, 2018

Attachment 7 to Discovery A-4 (Wastewater)



PROPERTY SITE MAP
SCALE: 1"=1000'



LOCATION OF EXISTING UNDERGROUND UTILITIES ARE BASED UPON SURFACE EVIDENCE AND EXISTING DRAWINGS AND ARE NOT GUARANTEED TO BE COMPLETE OR ACCURATE BY BYERS & RUNYON SURVEYING. CONTRACTOR SHOULD CONTACT THE PA. ONE CALL SYSTEM AT (1-800-242-1776) PRIOR TO ANY EXCAVATION AS REQUIRED BY PA. ACT 38 (1991)

DATE:
S/N



NOVEMBER 7, 2017

STRABAN TOWNSHIP

ADAMS COUNTY, PA.

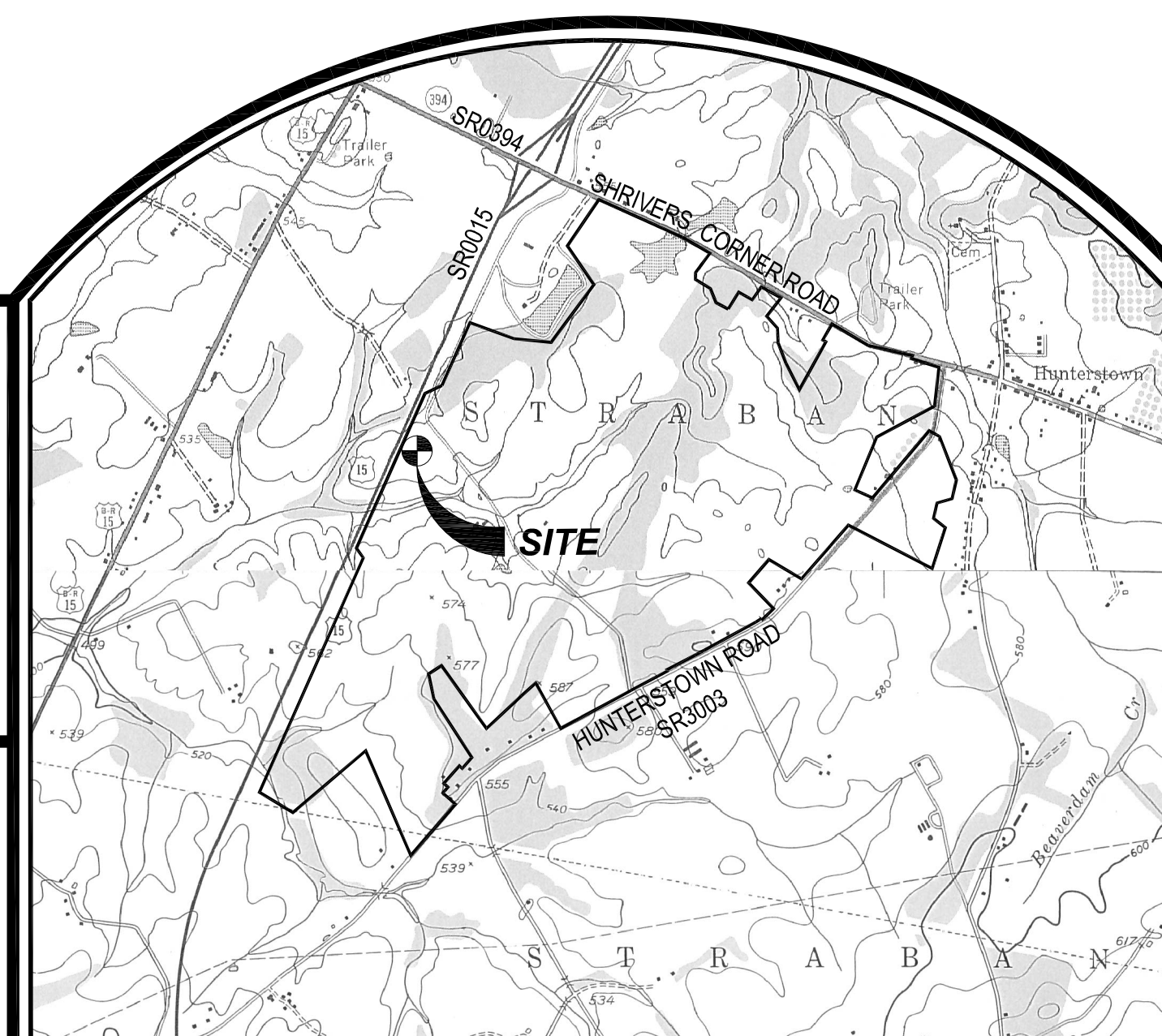
OWNER / DEVELOPER

GREATER GETTYSBURG DEVELOPMENT CO., LLC
601 MASON DIXON ROAD
GETTYSBURG, PA. 17325
TELEPHONE: (717) 359-8000

PREPARED BY:



martin and martin, Inc.
37 South Main Street · Suite A
Chambersburg, Pennsylvania 17201
phone: (717) 264-6759



LOCATION MAP



SCALE: 1" = 2,000'

TABLE OF CONTENTS

1. COVER SHEET
2. OVERALL SANITARY SEWER SYSTEM (SECTION A)
3. TREATMENT PLANT (SITE PLAN)
4. CONTROL BLDG. PLAN & DETAILS
5. CONTROL BLDG. ELEVATIONS
6. CONTROL BLDG. ELEVATIONS
7. CONTROL BLDG. GENERAL UTILITY PLAN

- M1. GENERAL NOTES
- M2. HYDRAULIC PROFILE
- M3. KEY PLAN
- M4. LAYOUT PLAN - WWT TANK LAYOUT PLAN
- M5. LAYOUT PLAN - PUMP STATION, FLOW SPLITTER, UV & POST AERATION
- M6. MECHANICAL PLAN - WWT TANK
- M7. MECHANICAL PLAN - PUMP STATION, FLOW SPLITTER, UV & POST AERATION
- M8. SECTIONS - WWT TANK
- M9. SECTIONS - WWT TANK
- M10. SECTIONS - PUMP STATION, FLOW SPLITTER, UV & POST AERATION
- M11. MECHANICAL DETAILS
- M12. MECHANICAL DETAILS
- M13. MECHANICAL DETAILS
- M14. DETAILS - FLOW SPLITTER BOX
- M15. DETAILS - FLOW SPLITTER GATE
- M16. DETAILS - BLOWER MOTOR DETAILS

SHEETS 01 THRU 16 ARE AS SUPPLIED BY THE GEN. CONTRACTOR/MANUFACTURER: DUTCHLAND INC. OF GAP, PA.

1250.6C (WWTP-2017) / 1250.6C-03.dwg

SR0015 BLUE & GRAY HIGHWAY

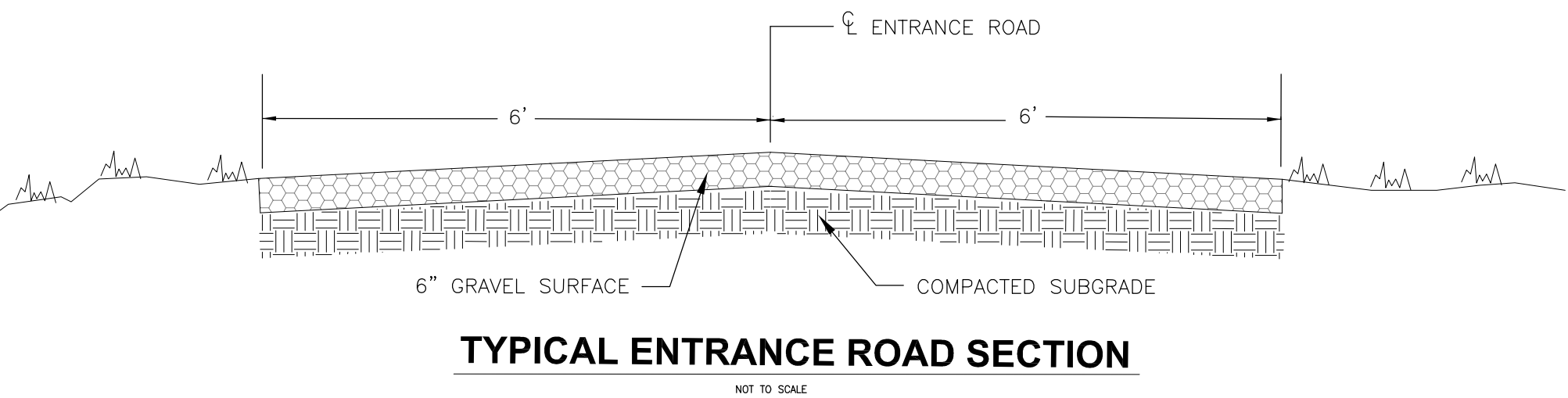
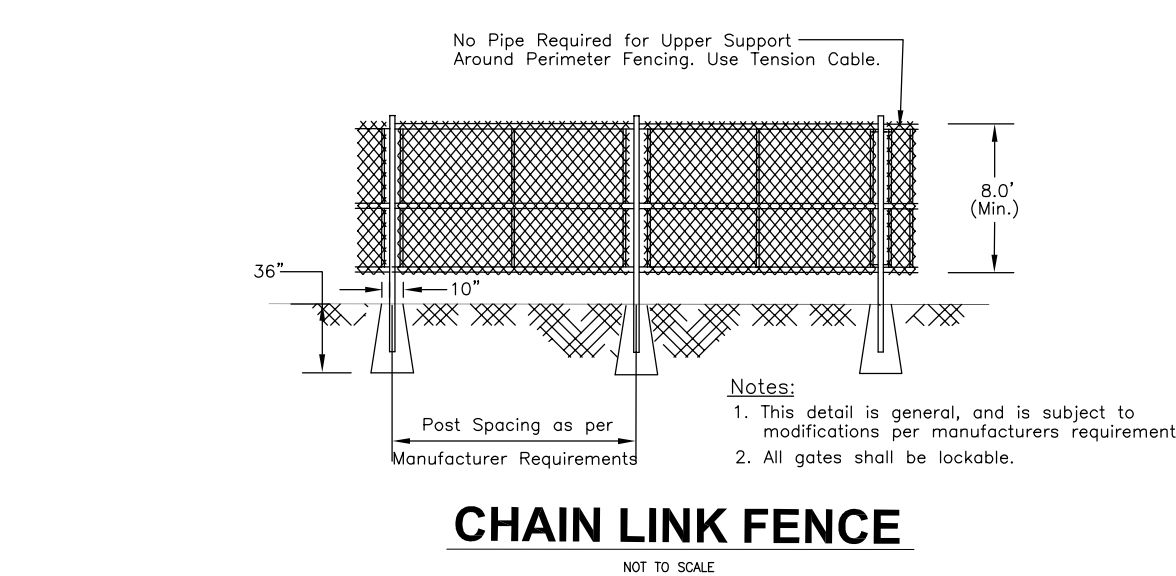
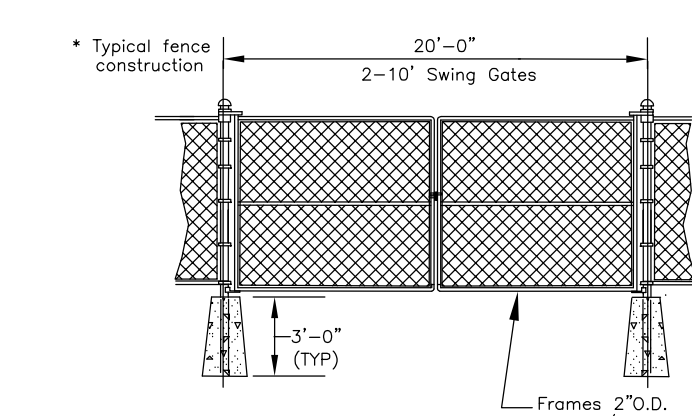
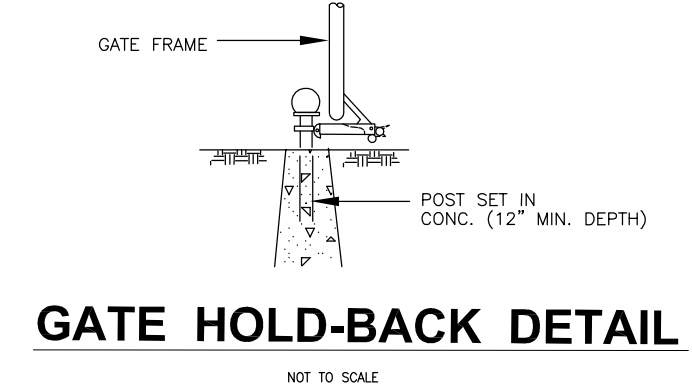
SCALE: 1"=30'



NO.	REVISION	DATE

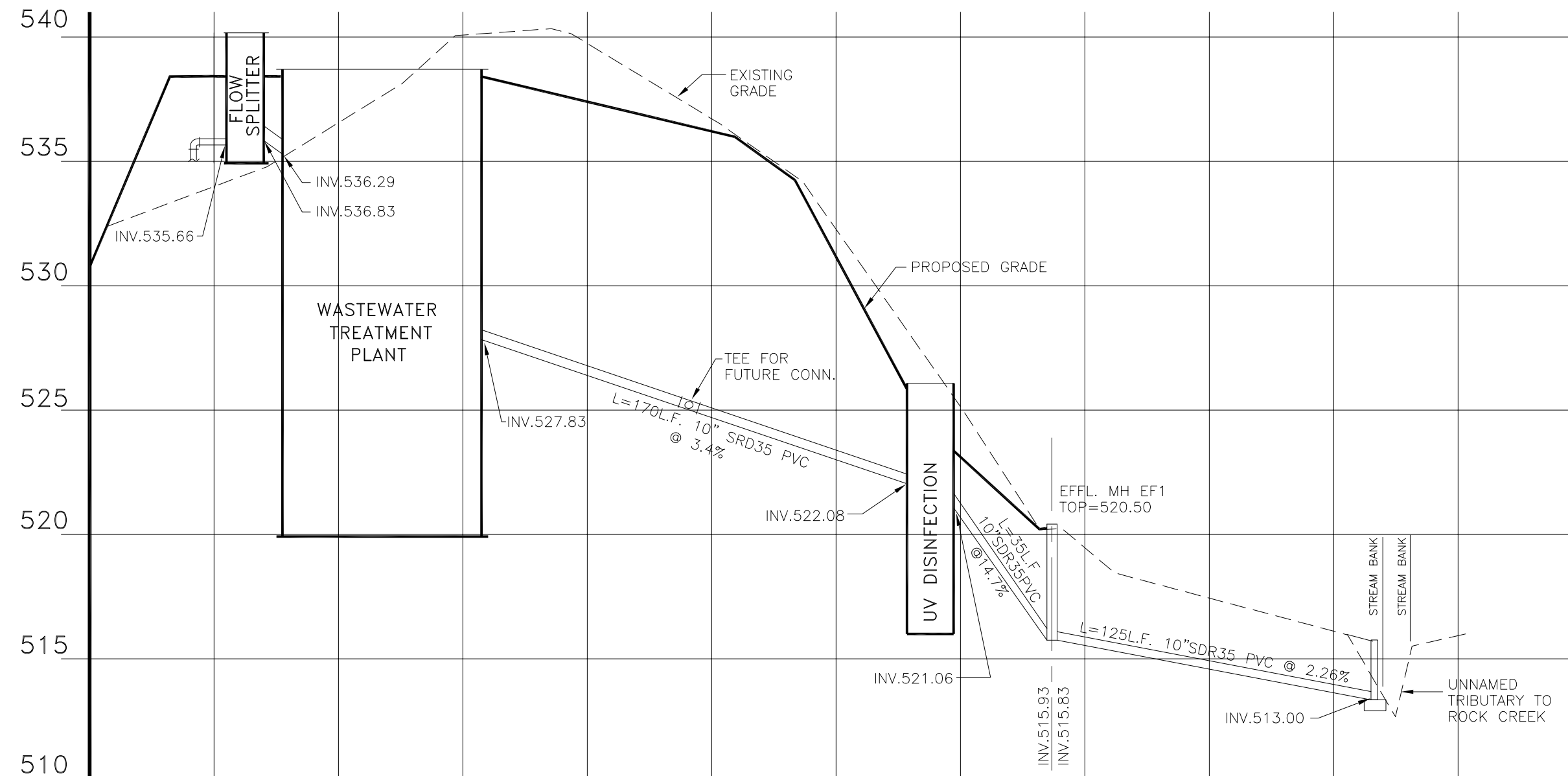
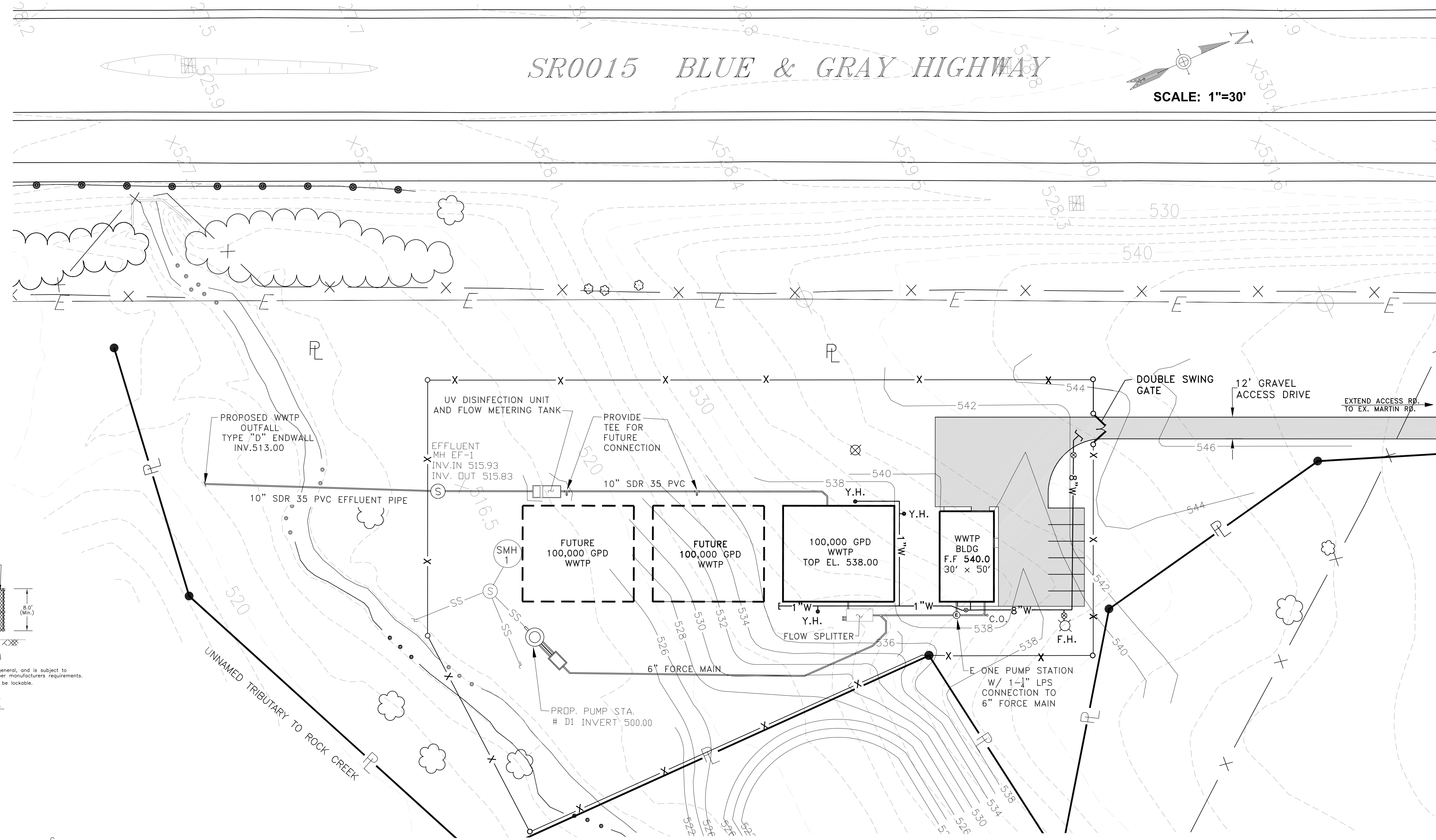
ADAMS COUNTY
STRABAN TOWNSHIP
TREATMENT PLANT (SITE PLAN)
GETTYSBURG COMMONS
GREATER GETTYSBURG DEVELOPMENT CO., LLC.

MMI martin and martin incorporated
37 south main street • suite A
phone: (717) 264-6759 chambersburg, pennsylvania . 17201
DRAWN BY: J.M. DB J.F.
CHECK BY: J.M. J.F.
SCALE: AS SHOWN
CADD FILE: 1250.6C-03.dwg
DATE: 11/07/17
SCALE: 1" = 30'
DRAWING NO. **3**



LEGEND

—	= WATER SERVICE LATERAL	-X-X-	= PROP. CHAIN LINK FENCE	☁	= EX. TREELINE
— 8"W	= WATER MAIN	— P —	= PROPERTY LINE	☀	= EX. TREE
Y.H.	= FROST FREE YARD HYDRANT	—	= WATERWAY EDGE	530	= EX. CONTOURS
F.H.	= FIRE HYDRANT	— 534	= PROP. GRADING	— E —	= EX. ELECTRIC
⊗	= VALVE	— X —	= EX. 6' CHAIN LINK FENCE		
SS	= SEWER LINE				
⊙	= MANHOLE				
— SS —	= PROP. SEWER LINE				



ROCK CREEK FARM

DRAWINGS FOR

WASTEWATER TREATMENT PLANT

REVIEWED

By Erik Vranich at 7:47 am, Jul 31, 2018

ADAMS COUNTY, PA

OWNER:

GREATER GETTYSBURG DEVELOPMENT COMPANY, LLC

601 MASON DIXON ROAD
GETTYSBURG, PA 17325

DESIGN ENGINEER:

ENTECH ENGINEERING, INC.

201 PENN STREET
P.O. BOX 32
READING, PA 19603

PROJECT ENGINEER:

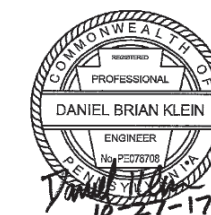
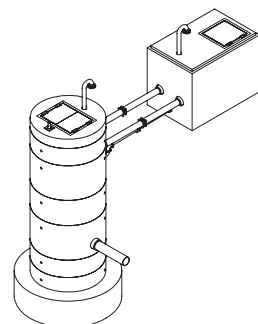
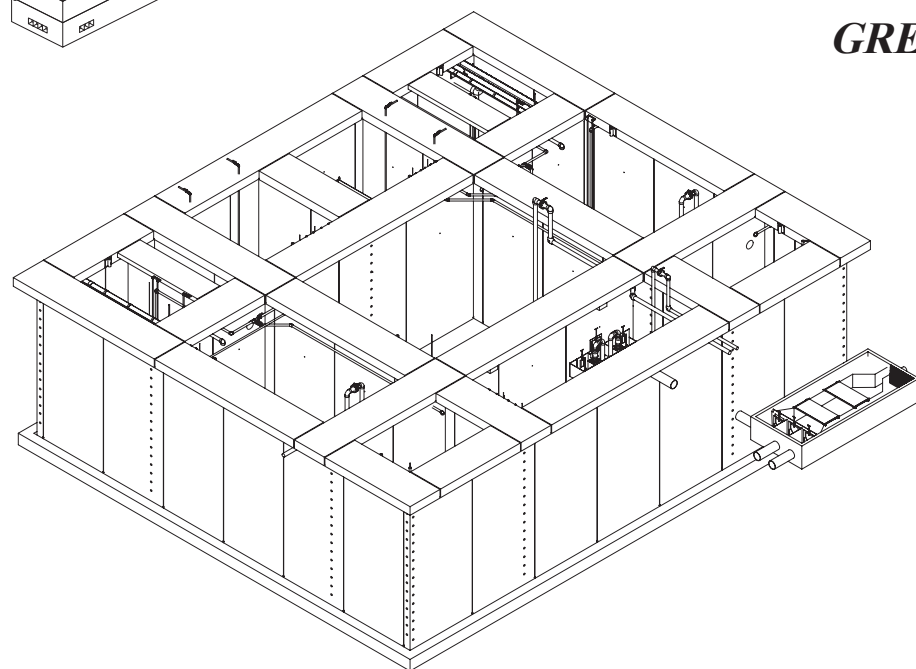
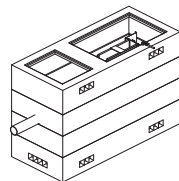
MARTIN AND MARTIN, INC.

37 SOUTH MAIN STREET, SUITE A
CHAMBERSBURG, PA 17201-2251

MANUFACTURER:

Dutchland
INCORPORATED
Engineered Concrete Environmental Solutions

160 Rt. 41 - Gap, PA 17527
Ph. 717-442-8282 Fax 717-442-9330
www.dutchlandinc.com

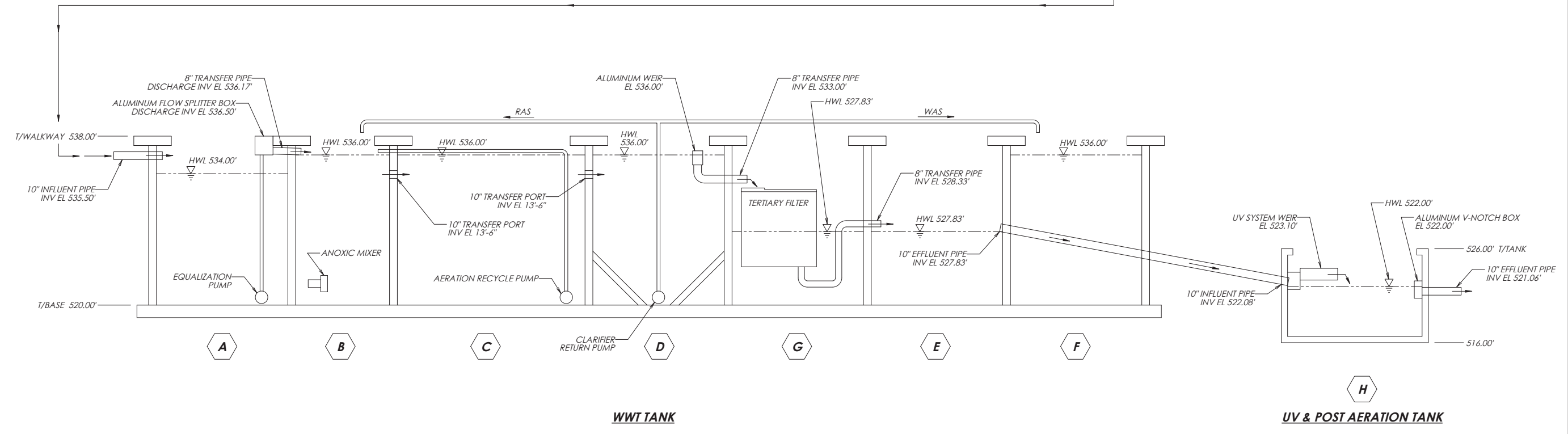
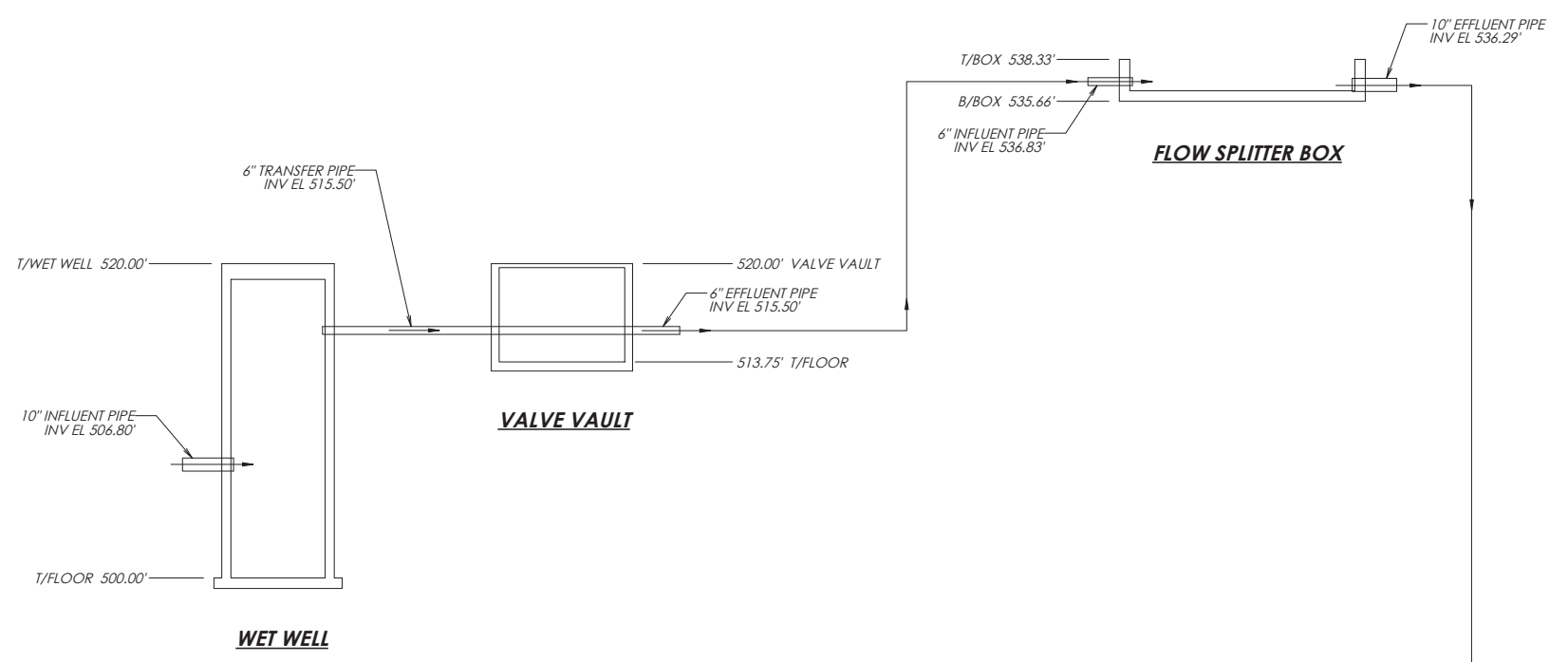


ISSUED FOR
PA DEP PART II
PERMIT APPLICATION

INDEX OF DRAWINGS:

REV.	ISSUE DATE	SHEET #	TITLE
0	10-27-2017	M1	GENERAL NOTES
0	10-27-2017	M2	HYDRAULIC PROFILE
0	10-27-2017	M3	KEY PLAN
0	10-27-2017	M4	LAYOUT PLAN - WWT TANK LAYOUT PLAN
0	10-27-2017	M5	LAYOUT PLAN - PUMP STATION, FLOW SPLITTER, UV & POST AERATION
0	10-27-2017	M6	MECHANICAL PLAN - WWT TANK
0	10-27-2017	M7	MECHANICAL PLAN - PUMP STATION, FLOW SPLITTER, UV & POST AERATION
0	10-27-2017	M8	SECTIONS - WWT TANK
0	10-27-2017	M9	SECTIONS - WWT TANK
0	10-27-2017	M10	SECTIONS - PUMP STATION, FLOW SPLITTER, UV & POST AERATION
0	10-27-2017	M11	MECHANICAL DETAILS
0	10-27-2017	M12	MECHANICAL DETAILS
0	10-27-2017	M13	MECHANICAL DETAILS
0	10-27-2017	M14	DETAILS - FLOW SPLITTER BOX
0	10-27-2017	M15	DETAILS - FLOW SPLITTER GATE
0	10-27-2017	M16	BLOWER MOTOR DETAILS

10/24/2017 3:32:54 PM 13041-WT M2 HYDRAULIC PROFILE



WWT TANK KEY	
KEY	TANK DESIGNATION
A	EQUALIZATION
B	ANOXIC
C	AERATION
D	CLARIFIER
E	CLEARWELL
F	SLUDGE HOLDING
G	MUDWELL
H	UV & POST AERATION

HYDRAULIC PROFILE
SCALE: NIS

**ISSUED FOR
PA DEP PART II
PERMIT APPLICATION**

NO.	REVISIONS	DATE	BY

SEAL

THE INFORMATION CONTAINED HEREIN IS THE PROPERTY OF DUTCHLAND, INC. AND IS NOT TO BE REPRODUCED, COPIED, OR TRANSMITTED IN ANY FORM OR BY ANY MEANS, ELECTRONIC OR MECHANICAL, INCLUDING PHOTOCOPYING, RECORDING, OR BY ANY INFORMATION STORAGE AND RETRIEVAL SYSTEM, WITHOUT THE WRITTEN PERMISSION OF DUTCHLAND, INC.

Dutchland
INCORPORATED
Engineered Concrete Environmental Solutions

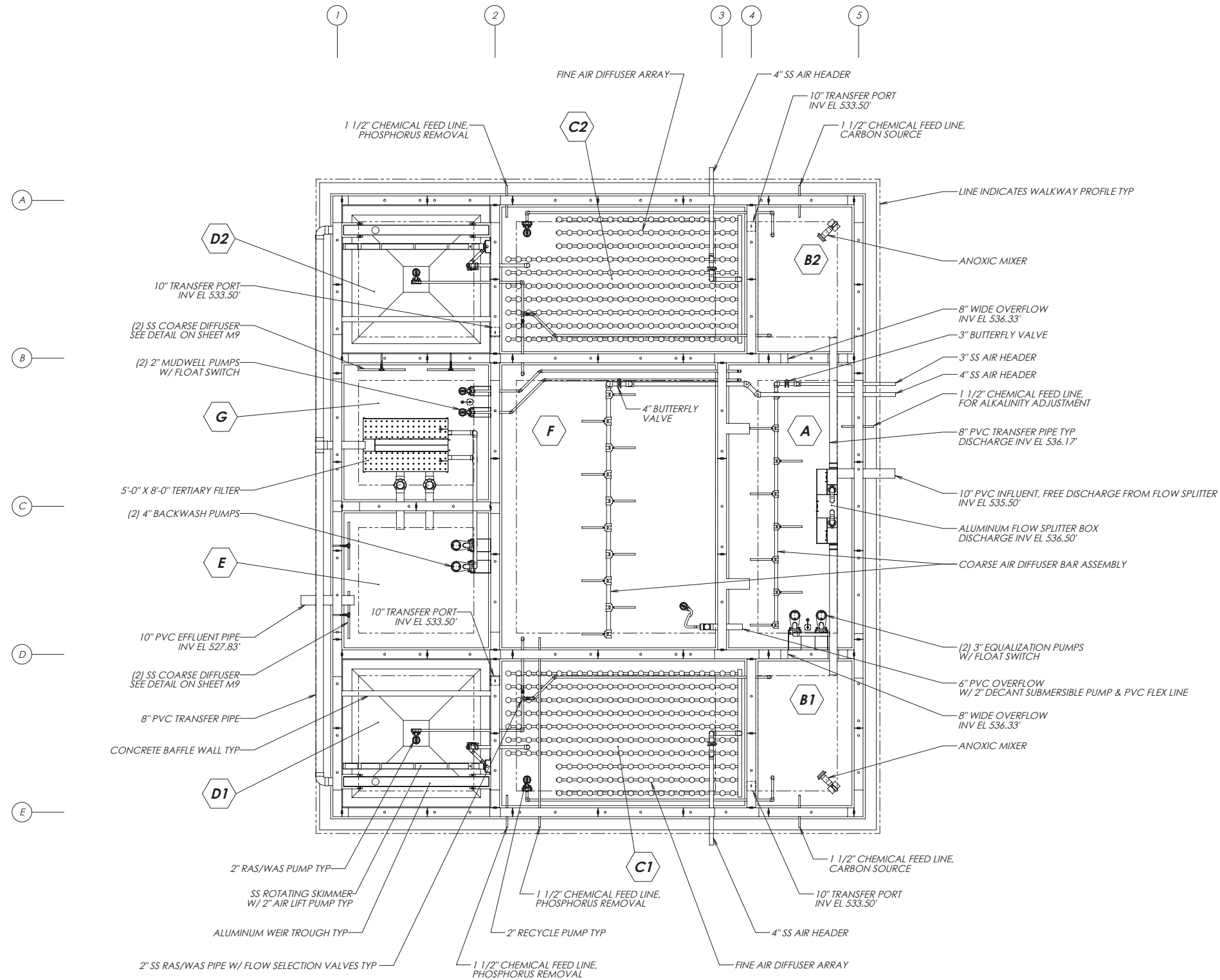
160 Bl. 41 - Gsp. PA 17527
Ph. 717-442-5282 Fax. 717-442-9330
www.dutchlandinc.com

Project: ROCK CREEK FARM
WASTEWATER TREATMENT TANK
ADAMS COUNTY, PA

HYDRAULIC PROFILE

Job Number:	13041-WT
Project Manager:	KM / GK
Drawn By:	DLH
Checked By:	KM / DK
Issue Date:	10-27-17
Sheet No.:	M2

10/20/2017 7:43:03 AM 13041-WT M6 MECHANICAL PLAN - WWTP TANK



WWTP TANK MECHANICAL PLAN

WWTP TANK KEY & CAPACITY			
KEY	TANK DESIGNATION	TOTAL VOLUME (GALLONS)	EFFECTIVE VOLUME (GALLONS)
A	EQUALIZATION	43,623	33,929
B1	ANOXIC - TRAIN 1	17,436	15,499
B2	ANOXIC - TRAIN 2	17,436	15,499
C1	AERATION - TRAIN 1	52,779	38,956
C2	AERATION - TRAIN 2	52,779	38,956
D1	CLARIFIER - TRAIN 1	19,627	18,968
D2	CLARIFIER - TRAIN 2	19,627	18,968
E	CLEARWELL	24,693	8,231
F	SLUDGE HOLDING	74,523	66,243
G	MUDWELL	24,693	10,975
H	UV & POST AERATION	6,692	5,538

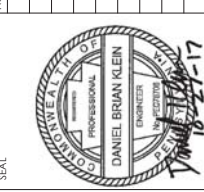
**ISSUED FOR
PA DEP PART II
PERMIT APPLICATION**

NOTE:
1. TOP WALKWAY NOT SHOWN FOR CLARITY



SCALE: 3/16" = 1'-0"

NO.	REVISIONS	DATE	BY



THE INFORMATION CONTAINED HEREIN IS THE PROPERTY OF DUTCHLAND, INC. AND IS NOT TO BE REPRODUCED, COPIED, TRANSMITTED, OR DISCLOSED IN ANY MANNER WITHOUT THE WRITTEN AUTHORIZATION OF DUTCHLAND, INC.

Dutchland
INCORPORATED
Engineered Concrete Environmental Solutions

1600 Rt. 41 - Gdp. PA 17527
Ph: 717-442-5282 Fax: 717-442-9330
www.dutchlandinc.com

Project:
ROCK CREEK FARM
WASTEWATER TREATMENT TANK

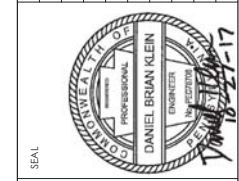
MECHANICAL PLAN
WWTP TANK

Job Number: 13041-WT
Project Manager: KM / GK
Drawn By: DLH
Checked By: KM / DK
Issue Date: 10-27-17
Sheet No. M6

10/25/2017 1:29:43 PM 13041-WT M7 MECHANICAL PLAN - PUMP STATION, FS, UV



NO.	REVISIONS	DATE	BY



THE INFORMATION CONTAINED HEREIN IS THE PROPERTY OF DUTCHLAND, INC. AND IS NOT TO BE REPRODUCED, COPIED, TRANSMITTED, OR USED IN ANY MANNER WITHOUT THE WRITING OF DUTCHLAND, INC.

Dutchland
INCORPORATED
Engineered Concrete Environmental Solutions

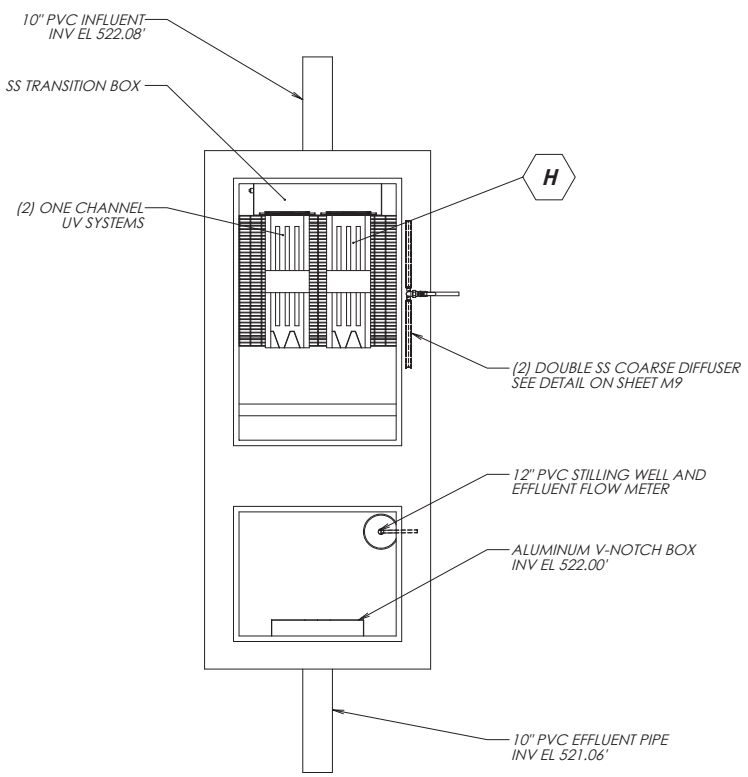
1600 Rt. 41 - Gwp. PA 17527
Ph: 717-442-5282 Fax: 717-442-9330
www.dutchlandinc.com

Project:
ROCK CREEK FARM
WASTEWATER TREATMENT TANK

ADAMS COUNTY, PA

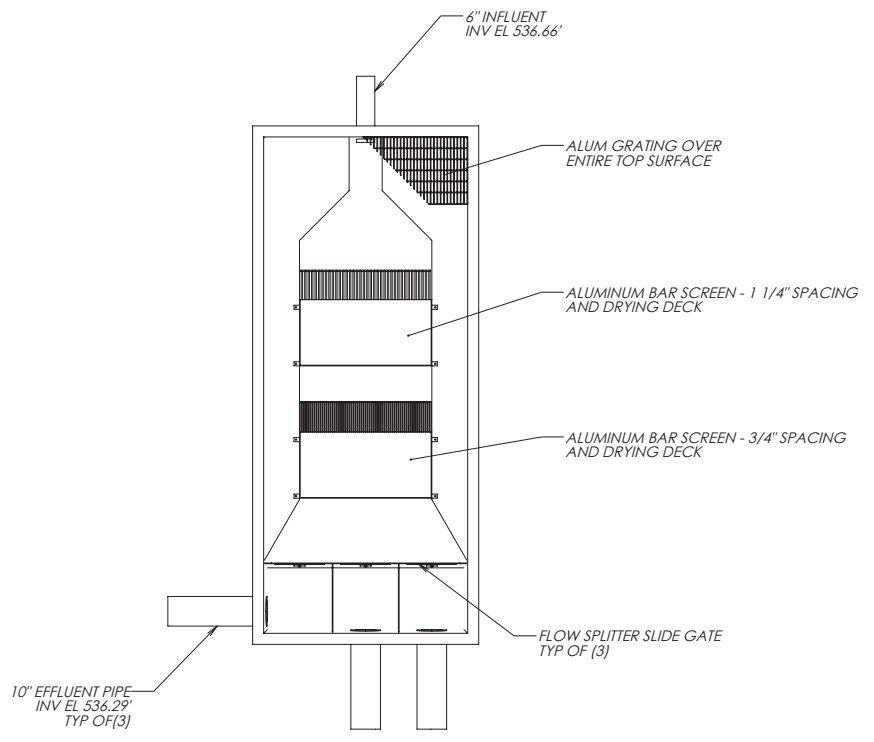
MECHANICAL PLAN
PUMP STATION,
FLOW SPLITTER
UV & POST AERATION

Job Number: 13041-WT
Project Manager: KM / GK
Drawn By: DLH
Checked By: KM / DK
Issue Date: 10-27-17
Sheet No. M7

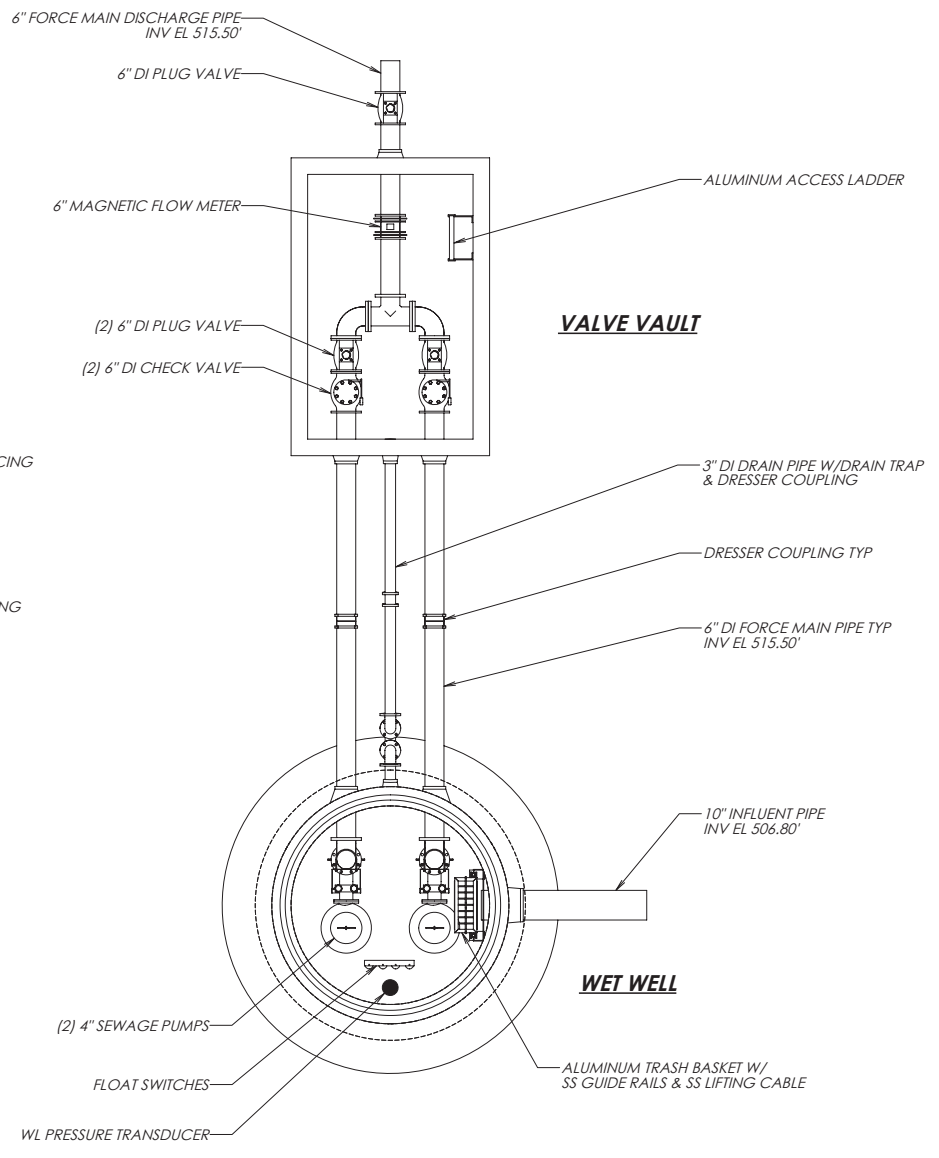


NOTE:
1. SEE SHEET M6 FOR CAPACITY.

UV & POST AERATION TANK PLAN



FLOW SPLITTER BOX PLAN

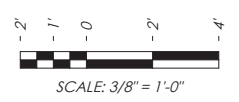


NOTE:
1. TOP OF WET WELL AND VALVE VAULT NOT SHOWN FOR CLARITY.

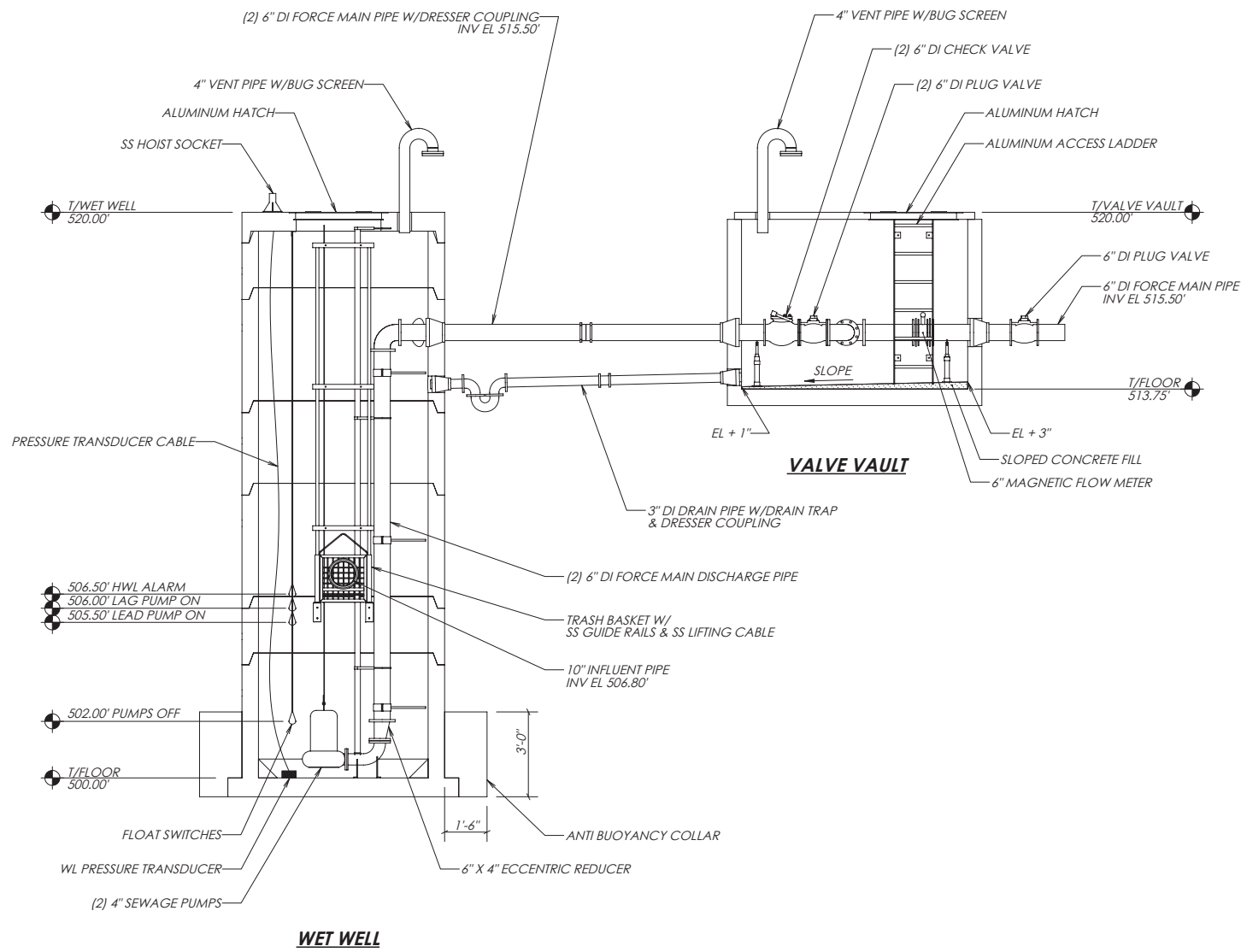
PUMP STATION PLAN

WWTP TANK KEY	
KEY	TANK DESIGNATION
A	EQUALIZATION
B	ANOXIC
C	AERATION
D	CLARIFIER
E	CLEARWELL
F	SLUDGE HOLDING
G	MUDWELL
H	UV & POST AERATION

**ISSUED FOR
PA DEP PART II
PERMIT APPLICATION**

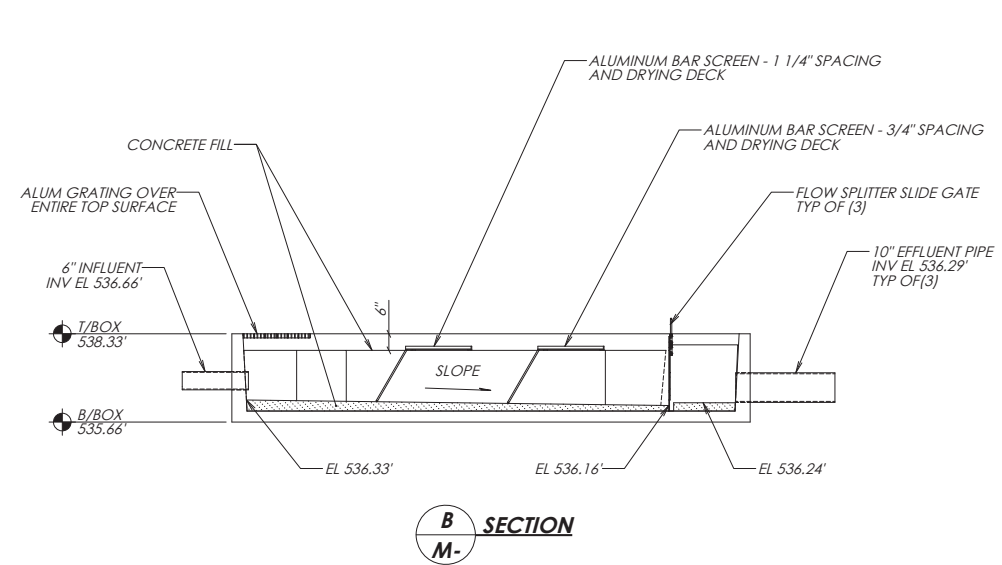


10/27/2017 3:01:56 PM 13041-WT M10 SECTIONS - PUMP STATION, FS UV

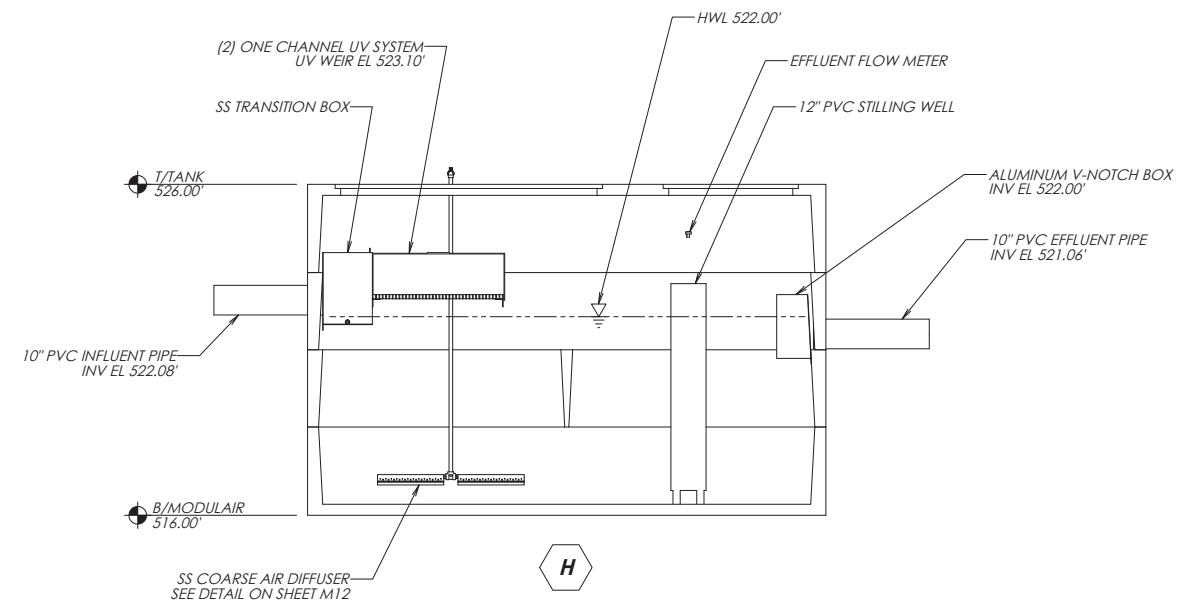


PUMP STATION

A SECTION
M2

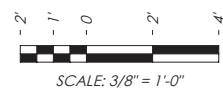


B SECTION
M-

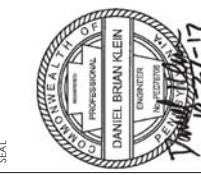


C SECTION
M2

**ISSUED FOR
PA DEP PART II
PERMIT APPLICATION**



NO.	REVISIONS	DATE	BY



THE INFORMATION CONTAINED HEREIN IS THE PROPERTY OF DUTCHLAND, INC. IT IS NOT TO BE REPRODUCED, COPIED, TRANSMITTED, OR USED IN ANY MANNER WITHOUT THE WRITTEN AUTHORIZATION OF DUTCHLAND, INC.

Dutchland
INCORPORATED
Engineered Concrete Environmental Solutions

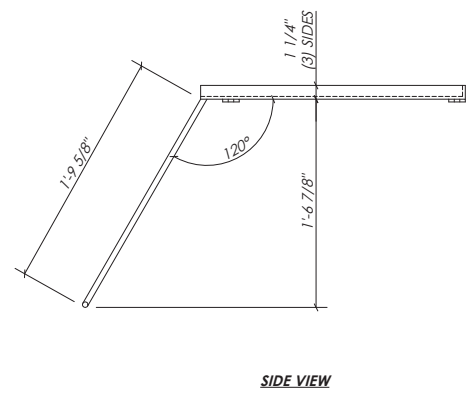
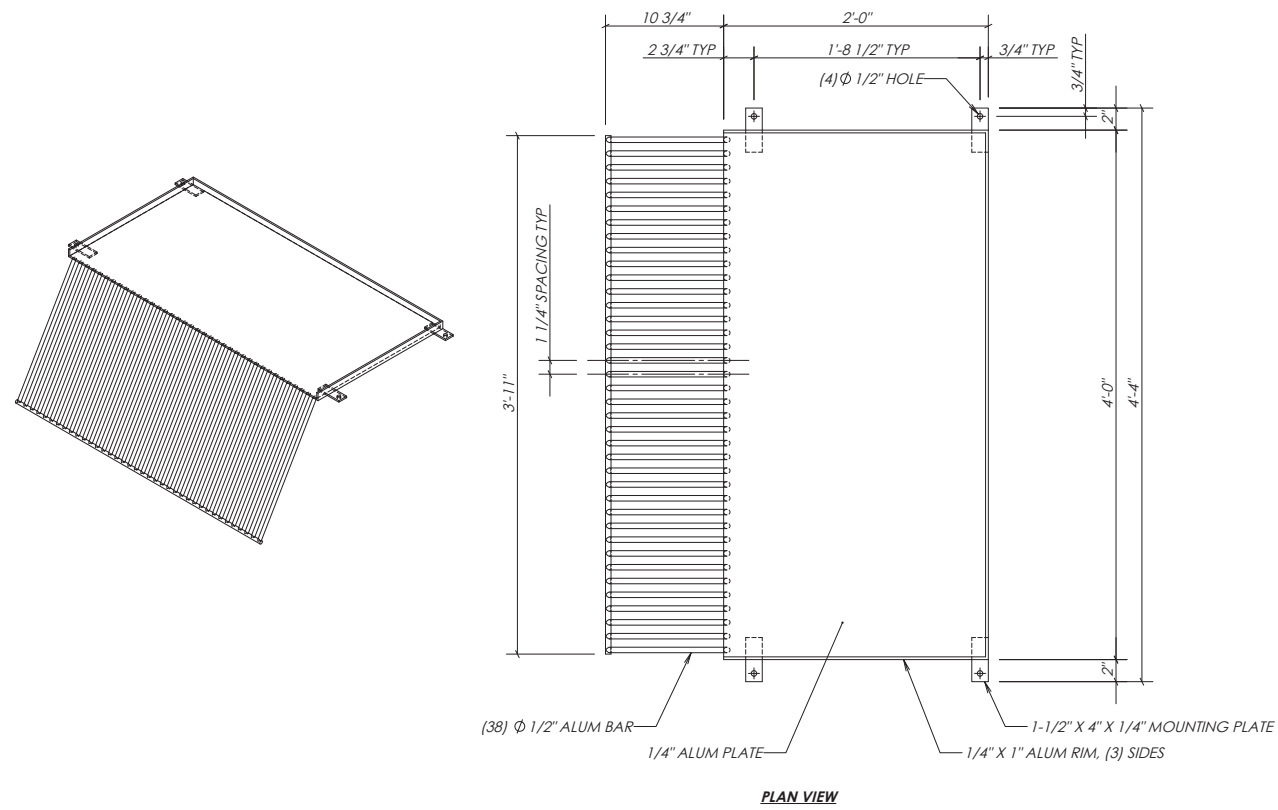
160 Bl. 41 - Gsp. PA 17527
Ph: 717-442-5282 Fax: 717-442-9330
www.dutchlandinc.com

Project:
ROCK CREEK FARM
WASTEWATER TREATMENT TANK

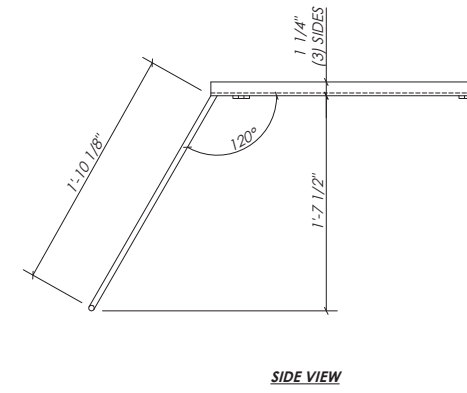
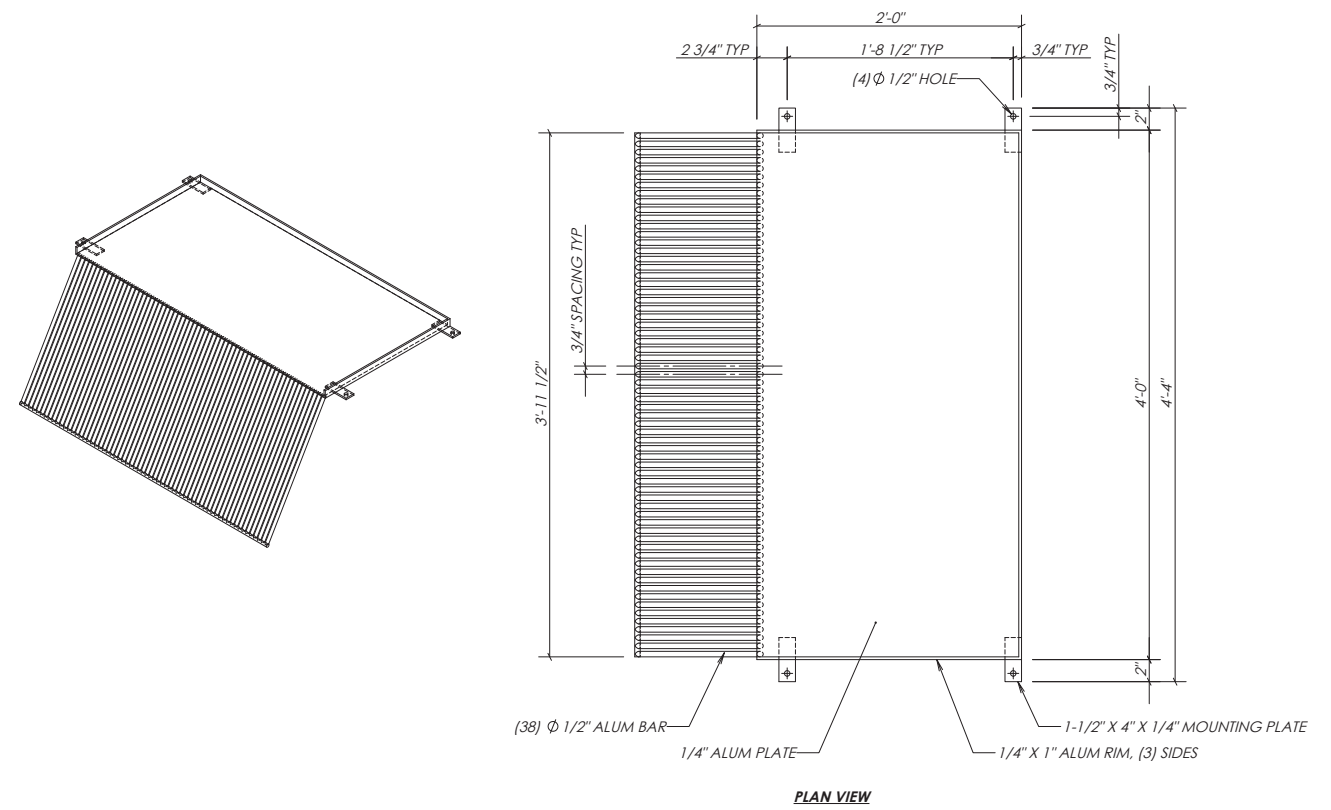
SECTIONS
PUMP STATION,
FLOW SPLITTER,
UV & POST AERATION

Job Number: 13041-WT
Project Manager: KM / GK
Drawn By: DLH
Checked By: KM / DK
Issue Date: 10-27-17
Sheet No. M10

10/20/2017 1:20:27 PM 13041-WT M13 DETAILS - MECHANICAL

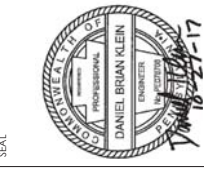


BAR SCREEN W/ DRYING DECK - 1-1/4" SPACING
 NTS



BAR SCREEN W/ DRYING DECK - 3/4" SPACING
 NTS

NO.	REVISIONS	DATE	BY



THE INFORMATION CONTAINED HEREIN IS THE PROPERTY OF DUTCHLAND, INC. AND IS NOT TO BE REPRODUCED, COPIED, TRANSMITTED, OR DISCLOSED IN ANY MANNER WITHOUT THE WRITTEN AUTHORIZATION OF DUTCHLAND, INC.

Dutchland
 INCORPORATED
 Engineered Concrete Environmental Solutions

160 Rt. 41 - Gap, PA 17527
 Ph. 717-442-8282 - Fax 717-442-9330
 www.dutchlandinc.com

Project:
 ROCK CREEK FARM
 WASTEWATER TREATMENT TANK

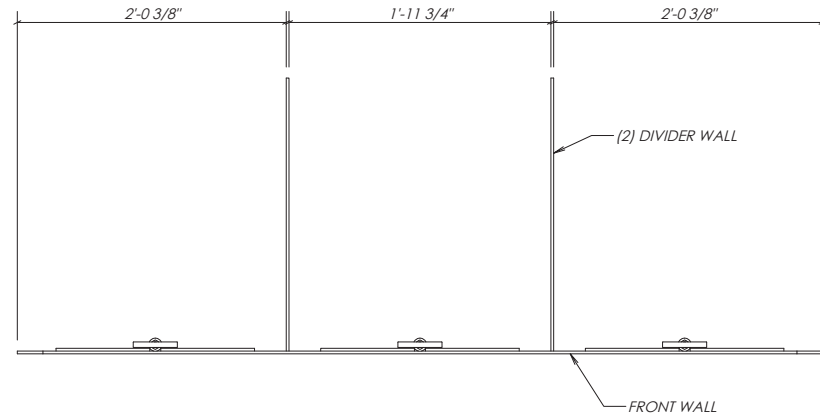
ADAMS COUNTY, PA

MECHANICAL DETAILS

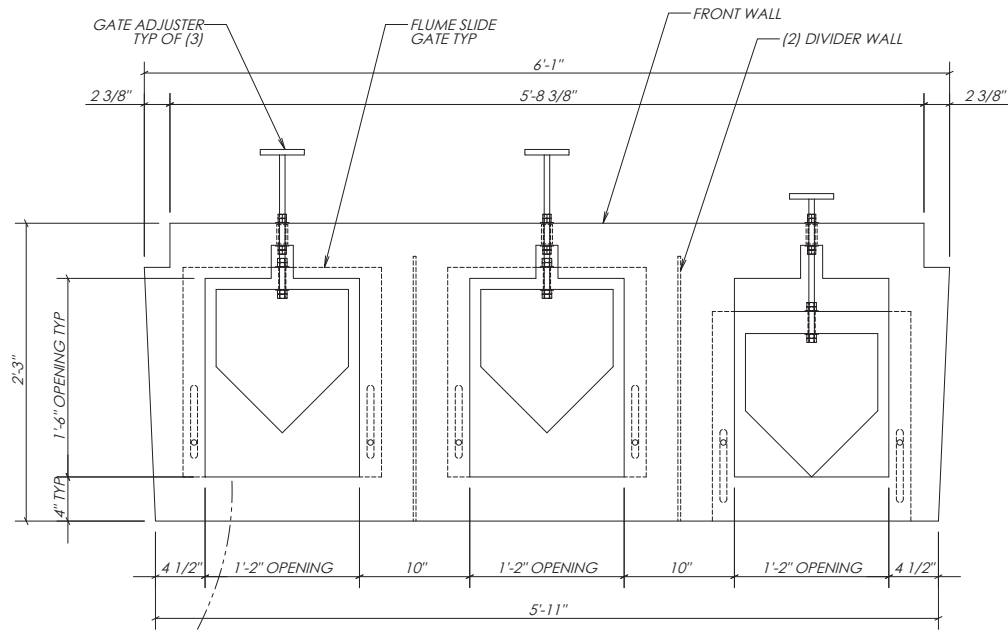
Job Number: 13041-WT
 Project Manager: KM / GK
 Drawn By: DLH
 Checked By: KM / DK
 Issue Date: 10-27-17
 Sheet No. M13

**ISSUED FOR
 PA DEP PART II
 PERMIT APPLICATION**

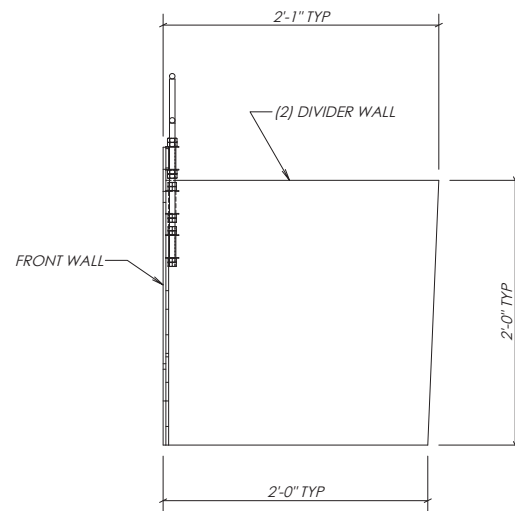
10/20/2017 1:21:24 PM 13041-WT M15 DETAILS - FLOW SPLITTER GATE



PLAN VIEW



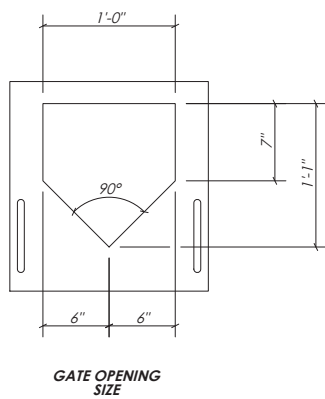
FRONT VIEW



SIDE VIEW

NOTE:
1. THE SPLITTER BOX IS CONSTRUCTED FROM 1/4\"/>

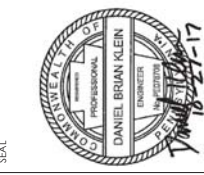
ALUMINUM FLOW SPLITTER GATE
NTS



GATE OPENING SIZE

FLUME OPENING
NTS

NO.	REVISIONS	DATE	BY



THE INFORMATION CONTAINED HEREIN IS THE PROPERTY OF DUTCHLAND, INC. AND IS NOT TO BE REPRODUCED, COPIED, TRANSMITTED, OR USED IN ANY MANNER WITHOUT THE WRITTEN AUTHORIZATION OF DUTCHLAND, INC.

Dutchland
INCORPORATED
Engineered Concrete Environmental Solutions

160 Rt. 41 - Gap, PA 17527
Ph. 717-442-8282 - Fax 717-442-9330
www.dutchlandinc.com

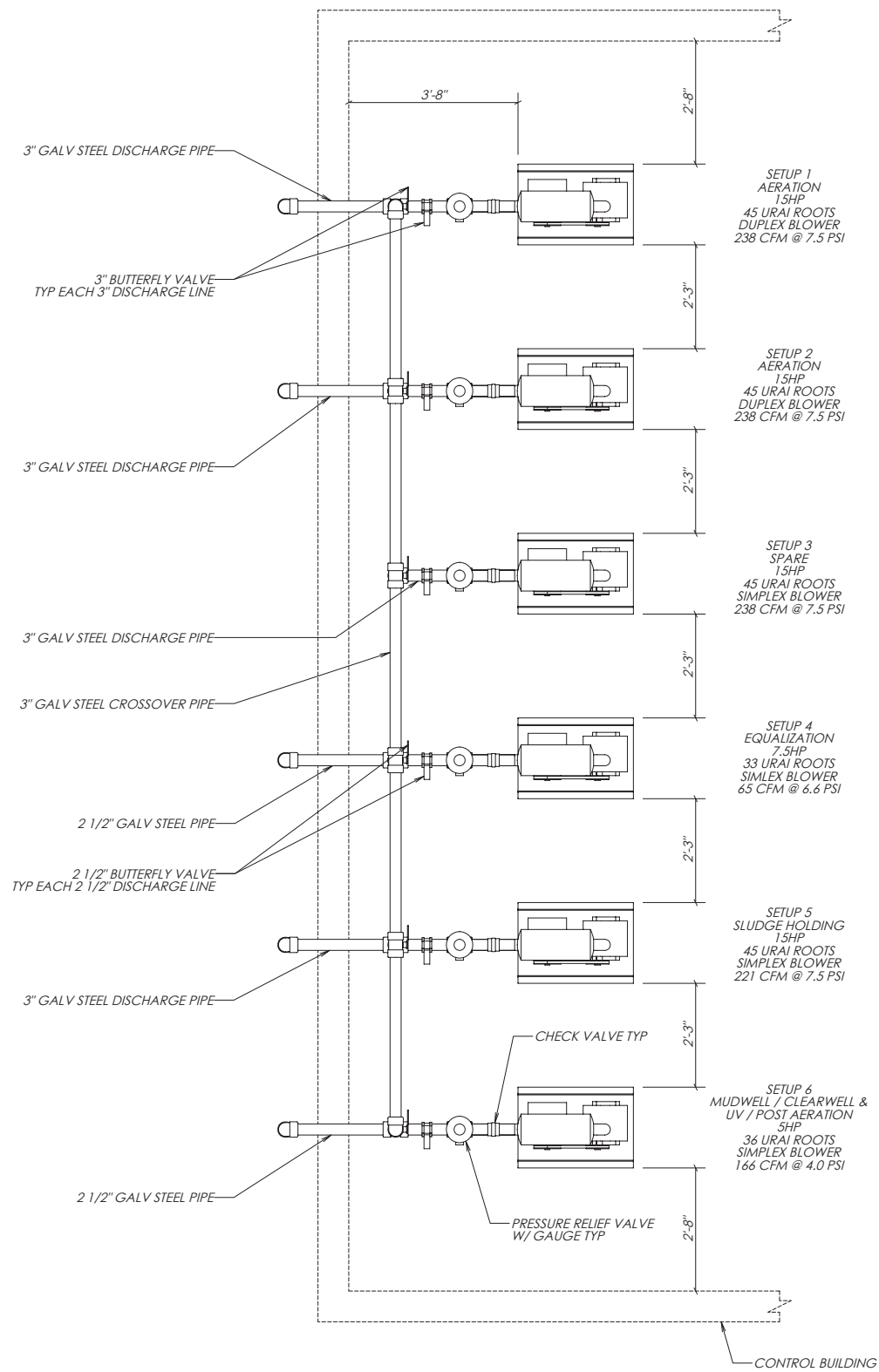
Project:
ROCK CREEK FARM
WASTEWATER TREATMENT TANK
ADAMS COUNTY, PA

**FLOW SPLITTER GATE
DETAILS**

Job Number: 13041-WT
Project Manager: KM / GK
Drawn By: DLH
Checked By: KM / DK
Issue Date: 10-27-17
Sheet No. M15

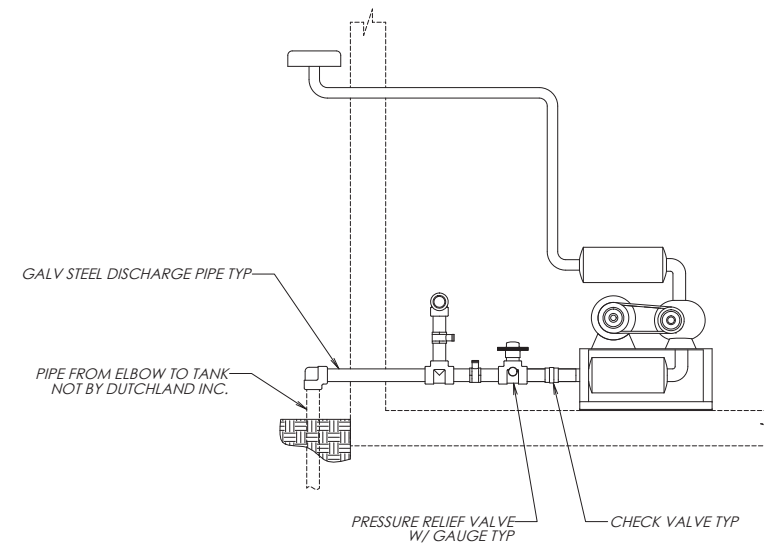
**ISSUED FOR
PA DEP PART II
PERMIT APPLICATION**

10/20/2017 1:28:24 PM 13041-WT M16 BLOWER MOTOR DETAILS



NOTE:
1. MECHANICAL REPRESENTATION ONLY
REFER TO SUBMITTALS FOR ACTUAL DIMENSIONS

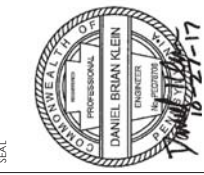
PLAN VIEW



ELEVATION VIEW

**ISSUED FOR
PA DEP PART II
PERMIT APPLICATION**

NO	REVISIONS	DATE	BY



THE INFORMATION CONTAINED HEREIN IS THE PROPERTY OF DUTCHLAND, INC. AND IS NOT TO BE REPRODUCED, COPIED, TRANSMITTED, OR DISTRIBUTED IN ANY MANNER WITHOUT THE WRITTEN AUTHORIZATION OF DUTCHLAND, INC.

Dutchland
INCORPORATED
Engineered Concrete Environmental Solutions

160 Bl. 41 - Gsp. PA 17527
Ph. 717-442-5282 Fax. 717-442-9330
www.dutchlandinc.com

Project:
ROCK CREEK FARM
WASTEWATER TREATMENT TANK
ADAMS COUNTY, PA

BLOWER MOTOR DETAILS

Job Number: 13041-WT
Project Manager: KM / GK
Drawn By: DLH
Checked By: KM / DK
Issue Date: 10-27-17
Sheet No. M16