

CERTIFICATE OF SERVICE

I, Tabatha Smith, of Comcast hereby certify that I have this day, 07-07-2020, served a true copy of the foregoing document upon the participants, listed below, in accordance with the requirements of § 1.54 (*relating to service by participant*).

Signature: _____



Pennsylvania Northeast Regional Railroad
Authority
Attn: Charlene Wagner Doyle
280 Cliff Street
Scranton, PA 18503

Moosic Borough Building
715 Main Street
Moosic, PA 18507

Lackawanna County Government Center
ATTN: Planning Commission
123 Wyoming Avenue
Scranton, PA 18503

Public Utilities Commission
PO BOX 3265
Harrisburg, PA 17105-3265

Americomm, LLC
21 State Avenue, Suite 1
Carlisle, PA 17013

Delaware-Lackawanna Railroad Co., Inc.
Attn: Lori Ransom, Superintendent
290 Cliff Street
Scranton, PA 18503

PPL Electric Utilities
600 Larch Street
Scranton, PA 18509

PennDOT
ATTN: Gary Fawver, P.E. Chief
Right of Way & Utilities Division
Bureau of Design
PO BOX 3362
Harrisburg, PA 17105-3362

PennDOT
ATTN: Governor's Office of General Counsel
Department of Transportation
Office of Chief Counsel
Real Property Division - Utility Section
PO BOX 8212
Harrisburg, PA 17105-8212

PennDOT Engineering Dist. 4
Attn: Permit Office
55 Keystone Industrial Park Road
Dunmore, PA 18512

EXHIBIT "B"

The public utilities, municipalities, corporations, and property owners concerned in, or affected by, the crossing alteration are:

Pennsylvania Northeast Regional Railroad
Authority
Attn: Charlene Wagner Doyle
280 Cliff Street
Scranton, PA 18503

Moosic Borough Building
715 Main Street
Moosic, PA 18507

Lackawanna County Government Center
ATTN: Planning Commission
123 Wyoming Avenue
Scranton, PA 18503

Public Utilities Commission
PO BOX 3265
Harrisburg, PA 17105-3265

Americomm, LLC
21 State Avenue, Suite 1
Carlisle, PA 17013

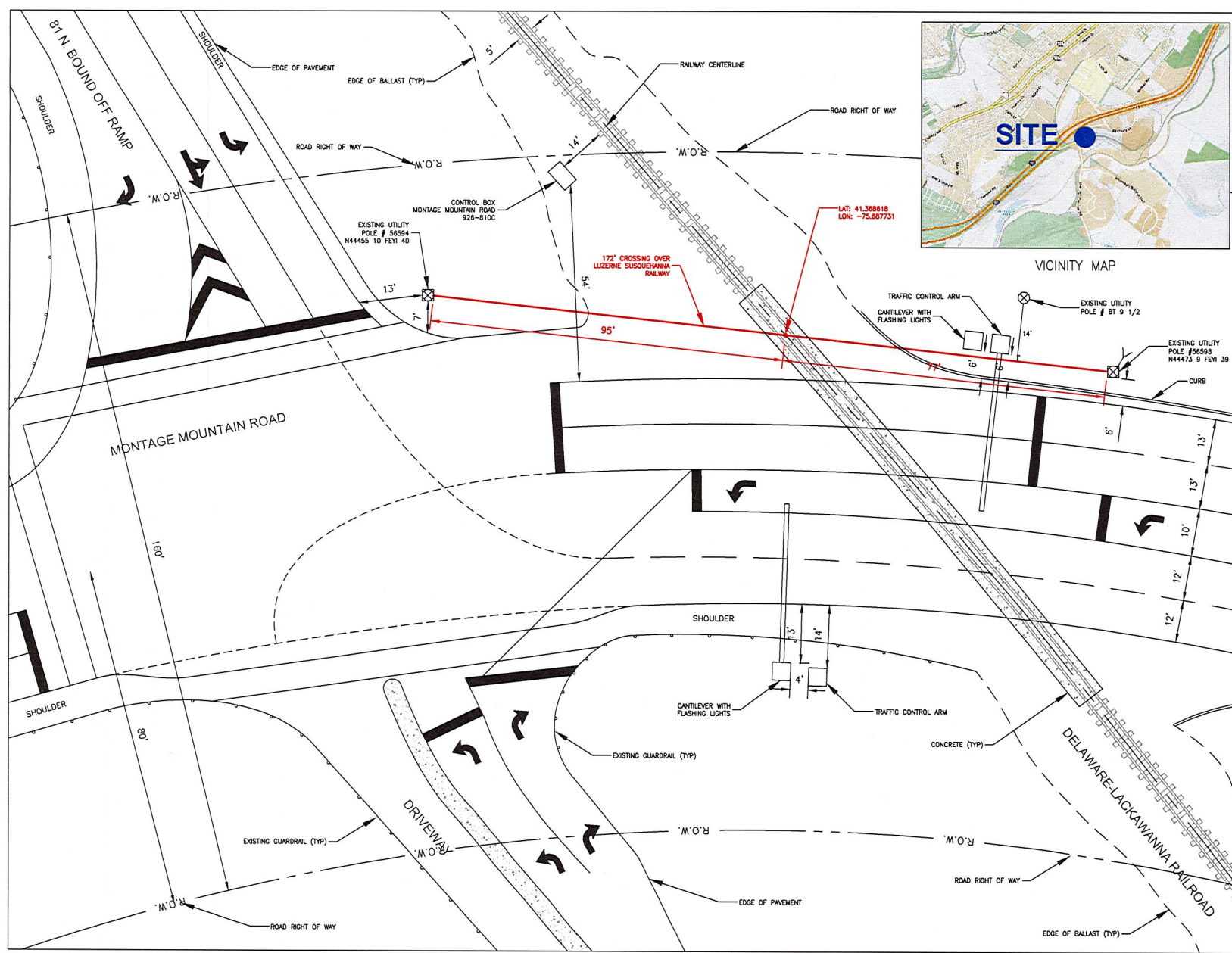
Delaware-Lackawanna Railroad Co., Inc.
Attn: Lori Ransom, Superintendent
290 Cliff Street
Scranton, PA 18503

PPL Electric Utilities
600 Larch Street
Scranton, PA 18509



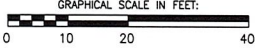
PennDOT
ATTN: Gary Fawver, P.E. Chief
Right of Way & Utilities Division
Bureau of Design
PO BOX 3362
Harrisburg, PA 17105-3362

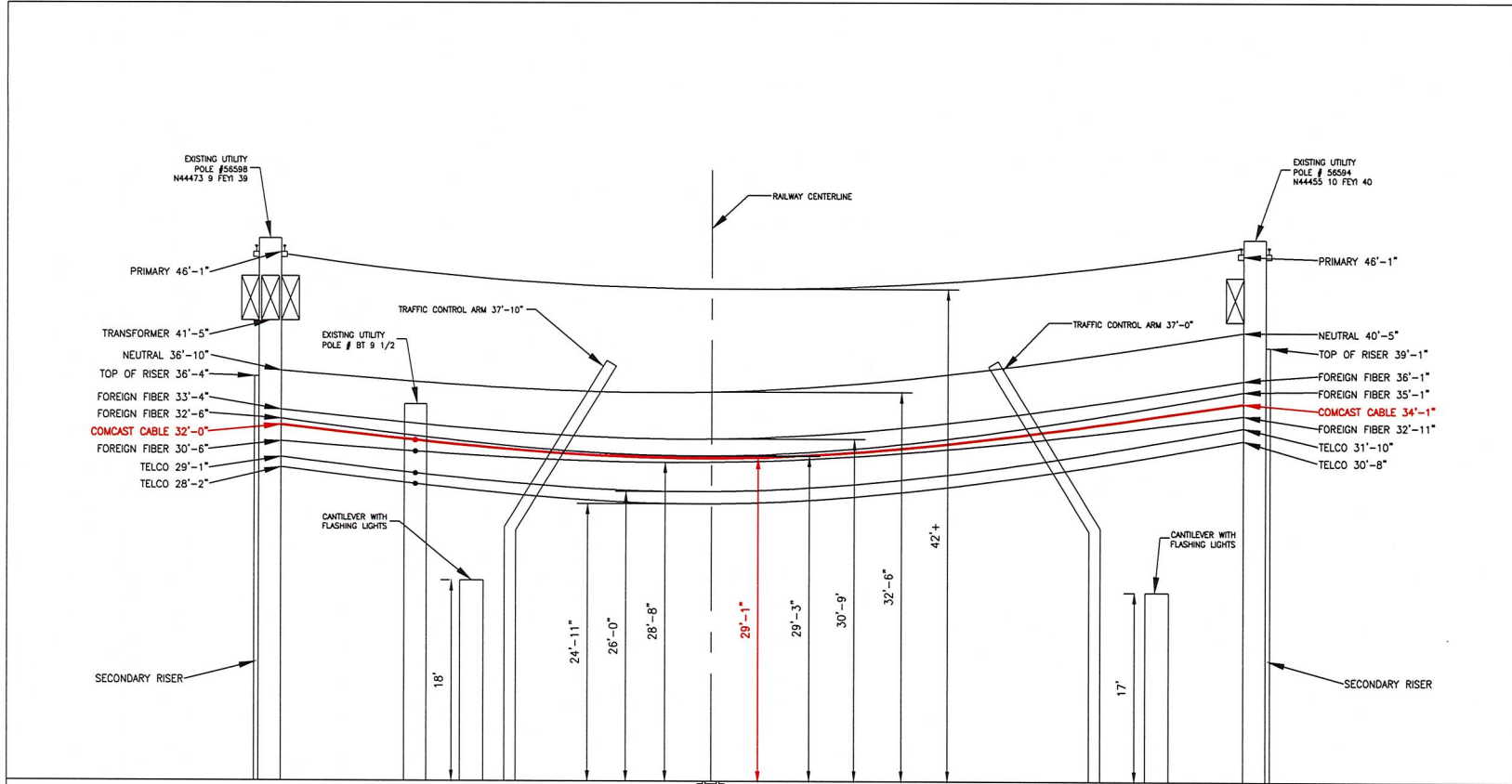
PennDOT
ATTN: Governor's Office of General Counsel
Department of Transportation
Office of Chief Counsel
Real Property Division - Utility Section
PO BOX 8212
Harrisburg, PA 17105-8212

PennDOT Engineering Dist. 4
Attn: Permit Office
55 Keystone Industrial Park Road
Dunmore, PA 18512



VICINITY MAP

Americomm LLC 	
8 Brookwood Ave. Suite 1 Carlisle, PA 17015	
comcast corporation	
MONTAGE MOUNTAIN RD MOOSIC, PA 18507	DRAWN _____ FIELDDED _____ DESIGNED _____ APPROVED _____
SITE LOCATION	
 PLAN VIEW SCALE: 1" = 20' 	
COMCAST	3 Moore Road Wallingford, PA 19086
AERIAL CABLE CROSSING OVER DELAWARE-LACKAWANNA RAILROAD COMPANY AT MONTAGE MOUNTAIN ROAD MOOSIC BORO, LACKAWANNA CO., PA	
AAR/DOT #265869P	
LOCATION: MONTAGE MOUNTAIN ROAD MOOSIC BORO, PA	
LATITUDE: 41.388818	
LONGITUDE: -75.687731	
DRAWING NO:	SHEET 1 OF 2
DRAWING DATE: 7/8/2020	
DRAWING SCALE: 1 INCH = 20 FEET	
SHEET 1 OF 2	



LOOKING NORTH EAST ON THE RAILWAY TRACKS

Americomm
LLC



8 Brookwood Ave.
Suite 1
Carlisle, PA 17015

comcast
corporation

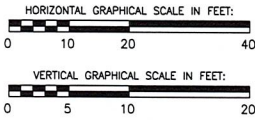
MONTAGE MOUNTAIN RD
MOOSIC, PA 18507

DRAWN _____
FIELDDED _____
DESIGNED _____
APPROVED _____

SITE LOCATION



PLAN VIEW
SCALE: 1" = 20'



COMCAST 3 Moore Road
Wallington, PA 19086

AERIAL CABLE CROSSING
OVER DELAWARE-LACKAWANNA
RAILROAD COMPANY AT
MONTAGE MOUNTAIN ROAD
MOOSIC BORO, LACKAWANNA CO., PA

AAR/DOT #265869P

LOCATION: MONTAGE MOUNTAIN ROAD
MOOSIC BOROUGH, PA
LATITUDE: 41.368618
LONGITUDE: -75.887731
DRAWING NO: SHEET 1 OF 2
DRAWING DATE: 7/8/2020
DRAWING SCALE: 1 INCH = 20 FEET /10 FEET