

PENNSYLVANIA PUBLIC UTILITY COMMISSION
Uniform Cover and Calendar Sheet

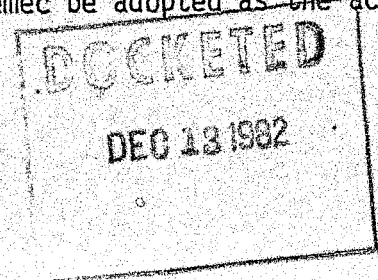
1. <u>REPORT DATE:</u>	November 18, 1982:	2. <u>BUREAU AGENDA NO.</u>
3. <u>BUREAU:</u>	ALJ	DEC-82-ALJ-371
4. <u>SECTION(S):</u>		5. <u>PUBLIC MEETING DATE:</u>
6. <u>APPROVED BY:</u>		December 3, 1982
Chief ALJ:	William R. Shane	
Director:	7-1191	
Supervisor:		
7. <u>MONITOR:</u>	Comm. Taliaferro	
8. <u>PERSON IN CHARGE:</u>	ALJ Nemec	
	8-645-3550	
9. <u>DOCKET NO:</u>	C-80092154	

10. (a) CAPTION (abbreviate if more than 4 lines)
 (b) Short summary of history & facts, documents & briefs
 (c) Recommendation
- (a) Glenfield Borough v. Consolidated Rail Corporation, Penn Central Transportation Co., Allegheny County and Pennsylvania Department of Transportation
- (b) July 20, 1981, the Commission directed Conrail to perform engineering evaluation of Glenfield Viaduct and also to conduct safety inspections at intervals of not more than six months and to maintain portions of it.
- Further hearing held.
- (c) October 8, 1982, Judge Nemec issued a Further Recommended Decision ordering continuance of safety inspections by Conrail at its initial expense, assigned maintenance responsibility to Conrail on interim basis, requested engineer to inspect for necessary repairs, commencement of in-depth evaluation including economic and engineering considerations by PennDOT and, that further hearing be held to determine work to be done, allocation of costs and reestablishment of maintenance responsibilities, if necessary.

No exceptions filed.

11. MOTION BY: Commissioner Johnson Commissioner Chm. Shanaman - Yes
 Commissioner Taliaferro - Yes
 SECONDED: Commissioner Cawley Commissioner Jones - Yes

CONTENT OF MOTION: That the Decision of ALJ Nemec be adopted as the action of the Commission.



December 13, 1982

C-80092154

Albert G. Feczko, Jr., Solicitor
Glenfield Borough
800 Lawyers Building
Pittsburgh, PA 15219

Glenfield Borough
v.
Consolidated Rail Corporation, Penn Central Transportation
Co., Allegheny County and Pennsylvania Department of Trans-
portation

To Whom It May Concern:

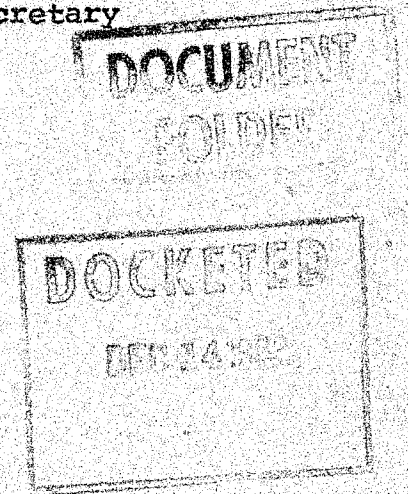
This is to advise you that an Order has been adopted by
the Commission in public meeting on December 3, 1982 in the
above entitled proceeding.

A copy of this Order has been enclosed for your records.

Very truly yours,

Jerry Rich, Secretary

fao
Encls.
Cert. Mail
Bureau of Rail Transportation
Law Bureau
Office of ALJ
Similar letter list attached.



PENNSYLVANIA
PUBLIC UTILITY COMMISSION
Harrisburg, PA 17120

Public Meeting held December 3, 1982

Commissioners Present:

Susan M. Shanaman, Chairman
Michael Johnson
James H. Cawley
Linda C. Taliaferro
Clifford L. Jones

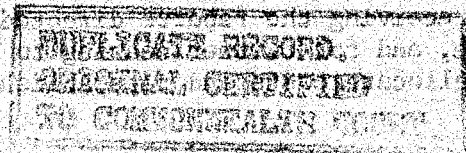
EXTRA COPY

Glenfield Borough

C-80092154

v.
Consolidated Rail Corporation,
Penn Central Transportation Co.,
Allegheny County and Pennsyl-
vania Department of Transportation

ORDER



BY THE COMMISSION:

We adopt as our action the Further Recommended Decision of Administrative Law Judge Nemec dated October 8, 1982; THEREFORE,

IT IS ORDERED:

1. That Consolidated Rail Corporation, at its initial expense, shall continue to conduct safety inspections of the Glenfield Viaduct at intervals of not more than six months as directed in paragraph 3 of the Order entered July 20, 1981, in this proceeding.
2. That Consolidated Rail Corporation is, on an interim basis, assigned maintenance responsibility for the span over its tracks, the thirteen southern viaduct spans, the sidewalk of the fourteen spans and the stairs leading to the sidewalk, all in a safe and satisfactory condition for pedestrian traffic and vehicular traffic at the present posted limit of sixteen (16) tons.
3. That the Bureau of Rail Transportation of the Commission shall assign an engineer to physically inspect the sidewalk and stairs on the Glenfield Viaduct to ascertain the current condition and, if necessary, advise this Commission and Consolidated Rail Corporation of any necessary repairs.
4. That Pennsylvania Department of Transportation, at its initial expense, shall commence immediately an in-depth evaluation of the entire situation involving the Glenfield Viaduct including economic and engineering considerations to answer the following questions:
 - A. Is it practical, both in cost and impact on Glenfield Borough to rehabilitate the Glenfield Viaduct?

B. If the answer to A above is yes, then the Department shall prepare plans to accomplish the rehabilitation.

C. If the answer to A above is no, then the Department shall prepare plans for the replacement of the Glenfield Viaduct with another crossing adequate and suitable for the needs of the Borough of Glenfield.

5. That the evaluation and preparation of plans directed in paragraph 4 above is to be completed within fourteen (14) months after service of this Order.

6. That within sixty (60) days after the date of this Order, the Pennsylvania Department of Transportation, at its sole expense, shall post the Glenfield Viaduct in accordance with the recommendation of Commission Trial Staff and its Exhibit 1.

7. That the record in this proceeding will remain open for the purpose of receiving the reports directed above, for directing that inspections or work be done, and for further hearing to determine what work, if any, should be done, and to allocate costs and reestablish maintenance responsibilities, if necessary.

BY THE COMMISSION,

Jerry Rich
Secretary

(SEAL)

ORDER ADOPTED: December 3, 1982

ORDER ENTERED: DEC 13 1982