

PENNSYLVANIA PUBLIC UTILITY COMMISSION
Uniform Cover and Calendar Sheet

1. <u>REPORT DATE:</u>	November 19, 1986	:	2. <u>BUREAU AGENDA NO.</u>
3. <u>BUREAU:</u>	ALJ	:	DEC-86-ALJ-239
4. <u>SECTION(S):</u>		:	5. <u>PUBLIC MEETING DATE:</u>
6. <u>APPROVED BY:</u>		:	December 4, 1986
Chief ALJ:	Allison K. Turner	:	
Director:	Ext. 7-6108	:	
Supervisor:		:	
7. <u>MONITOR:</u>		:	
8. <u>PERSON IN CHARGE:</u>		:	
	ALJ Fountain 8-325-2105	:	
9. <u>DOCKET NO:</u>	C-850414	:	

10. (a) CAPTION (abbreviate if more than 4 lines)
 (b) Short summary of history & facts, documents & briefs
 (c) Recommendation

(a) Borough of Ridley Park v. Southeastern Pennsylvania Transportation Authority, Pennsylvania Department of Transportation, Consolidated Rail Corporation, National Railroad Passenger Corporation and Delaware County

(b) On September 18, 1985, the Borough of Ridley Park filed a complaint against SEPTA, PennDOT, Conrail, Amtrak and Delaware County, alleging a bridge and approaches thereto over respondent's railroad tracks at Sellers and East Ridley Avenues, in the said borough, are in a state of disrepair which requires immediate maintenance and repairs. Hearing held.

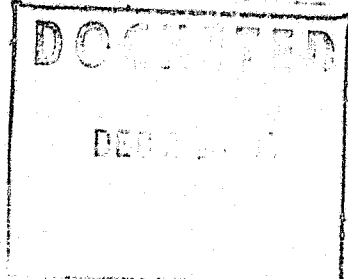
(c) Judge Fountain issued a decision recommending Amtrak conduct core boring tests on subject structure and PennDOT perform an analysis thereof to determine advisability of replacing deck.

Recommended Decision served: October 14, 1986.

Exceptions filed by: SEPTA, October 22, 1986 stating that they would not be filing exceptions. NOT ATTACHED.

11. MOTION BY: Commissioner Chm. Taliaferro Commissioner Fischl - Yes
 Commissioner
 SECONDED: Commissioner Shane Commissioner

CONTENT OF MOTION: That the Decision of ALJ Fountain be adopted as the action of the Commission.





COMMONWEALTH OF PENNSYLVANIA
PENNSYLVANIA PUBLIC UTILITY COMMISSION
P. O. BOX 3265, HARRISBURG, Pa. 17120

December 9, 1986

IN REPLY PLEASE
REFER TO OUR FILE

C-850414

TO ALL PARTIES

Borough of Ridley Park

v.

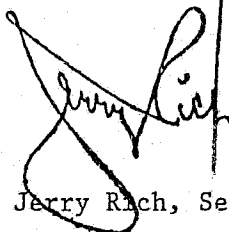
Southeastern Pennsylvania Transportation Authority,
Pennsylvania Department of Transportation, Consolidated
Rail Corporation, National Railroad Passenger Corporation
and Delaware County

To Whom It May Concern:

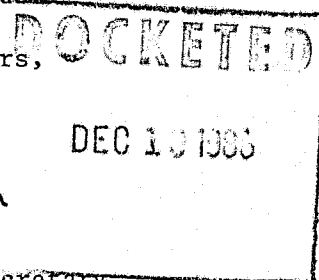
This is to advise you that an Order has been adopted by the Commission in Public Meeting on December 4, 1986, in the above entitled proceeding.

An Executed Order has been enclosed for your records.

Very truly yours,



Jerry Rich, Secretary



jr
Encls.
Cert. Mail

Refer to Recommended Decision letter dated October 14, 1986.

PENNSYLVANIA
PUBLIC UTILITY COMMISSION
Harrisburg, PA 17120

Public Meeting held December 4, 1986

Commissioners Present:

Linda C. Taliaferro, Chairman
Frank Fischl
Bill Shane

Borough of Ridley Park

C-850414

v.

Southeastern Pennsylvania Transportation
Authority, Pennsylvania Department of
Transportation, Consolidated Rail Corporation,
National Railroad Passenger Corporation and
Delaware County.

O R D E R

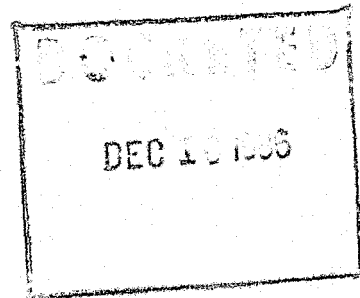
BY THE COMMISSION:

We adopt as our action the Recommended Decision of Administrative
Law Judge Martin R. Fountain dated September 22, 1986; THEREFORE,

IT IS ORDERED:

1. That National Railroad Passenger Corporation, at its initial
cost and expense, provide all material and do all work necessary to obtain
sufficient core boring samples from the bridge deck of the bridge at Sellers
Avenue and East Ridley Avenue in the Borough of Ridley Park; and to forward
said core boring samples to Pennsylvania Department of Transportation.

2. That Pennsylvania Department of Transportation, at its initial
cost and expense, provide all material and do all work necessary to perform
such testing an analysis of the core boring samples to determine the
structural adequacy and ion (salt) concentration of the deck; and to send to
all parties of record and to this Commission a report of its testing and
results with recommendation as to repairs, replacement, or other work, if any,
required to be performed on the bridge deck and the associated cost of said
work.

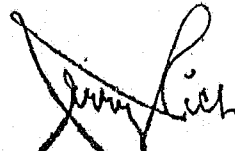


3. That National Railroad Passenger Corporation and Pennsylvania Department of Transportation cooperate with each other during the performance of the work herein ordered and that all work be completed within 3 months of the service of the Commission order.

4. That upon completion of the report herein ordered and its submission to the Commission, a further hearing be held to consider said report and any other matters concerning this proceeding.

5. That Philadelphia Suburban Water Company be made a party of record to this proceeding since it is now known that they have facilities attached to the subject bridge.

BY THE COMMISSION,



Jerry Rich
Secretary

(SEAL)

ORDER ADOPTED: December 4, 1986

ORDER ENTERED: December 9, 1986