



February 2, 2022

**VIA E-FILING AND E-MAIL**

Secretary Rosemary Chiavetta  
Pennsylvania Public Utility Commission  
400 North Street  
Harrisburg, PA 17120  
[rchiavetta@pa.gov](mailto:rchiavetta@pa.gov)

**Re: BreakerBox, LLC,  
A-2020-3020316  
Notice of Change in Upstream Ownership**

Dear Secretary Chiavetta:

This letter serves as notice to the Pennsylvania Public Utility Commission of an upstream change in ownership of BreakerBox, LLC (“BreakerBox”) that occurred on February 1, 2022.

Exelon Corporation was formerly the ultimate upstream owner of BreakerBox. Exelon Corporation was formerly comprised of two distinct businesses, a regulated utility business (“Exelon Utilities”) and a competitive electric and gas business, Exelon Generation Company, LLC (“Exelon Generation”). Exelon Generation is the upstream owner of BreakerBox and other subsidiaries.

Effective February 1, 2022, Exelon Corporation has separated its regulated utility business (Exelon Utilities) from its competitive generation and marketing business (Exelon Generation) through a spin-off in which Exelon Generation is now a new, independent, publicly-traded company (the “Transaction”). The industry trend in recent years has been towards the separation of regulated utilities from competitive business segments. Exelon Corporation determined that separating its regulated utility and competitive businesses would be in the best interests of both companies, their customers, and their investors by providing each company the financial and strategic independence to focus on its specific customer needs, while executing its core business strategy.

There were two steps in the Transaction. First, Exelon Corporation formed a new, wholly owned subsidiary, Constellation Energy Corporation (“HoldCo”), and contributed its ownership interests in Exelon Generation into HoldCo in an internal corporate reorganization. This resulted in Exelon Generation becoming a direct, wholly owned subsidiary of HoldCo and the Exelon Generation subsidiaries becoming indirect wholly owned subsidiaries of HoldCo, with Exelon Corporation remaining as the ultimate upstream owner of the Exelon Utilities. Following this first step of the Transaction, the interests in HoldCo were distributed *pro rata* to Exelon Corporation’s

shareholders via a dividend, resulting in two unaffiliated publicly traded companies. As a result, BreakerBox's ultimate parent is no longer Exelon Corporation, but is now HoldCo. We expect that following the Transaction, Exelon Generation will be renamed Constellation Energy Generation, LLC.

The Transaction will have no impact on BreakerBox or its provision of service in Pennsylvania. All existing customers of BreakerBox in Pennsylvania will continue to be served by BreakerBox. BreakerBox will continue to be a wholly owned subsidiary of Exelon Generation and will continue to act as a broker of electricity in Pennsylvania. It will continue to hold its broker license and serve its customers in Pennsylvania under the same terms and conditions, and in the same manner as prior to the upstream change in ownership. There will be no adverse impacts to the customers whatsoever – no customer contracts will be affected, and customers will not experience any change in the terms, conditions, or quality of their service. Nor will the change in ownership structure of BreakerBox parent company, Exelon Generation, affect the financial and technical capability of BreakerBox to serve customers in the Pennsylvania electric market.

Attachment A shows the Pre-Transaction organizational chart for Exelon Corporation, Exelon Generation and its subsidiaries, including BreakerBox. Attachment B shows the organizational chart for Exelon Generation following the Transaction.

If you have any questions, please do not hesitate to contact me. Thank you for your attention to this matter.

Sincerely,

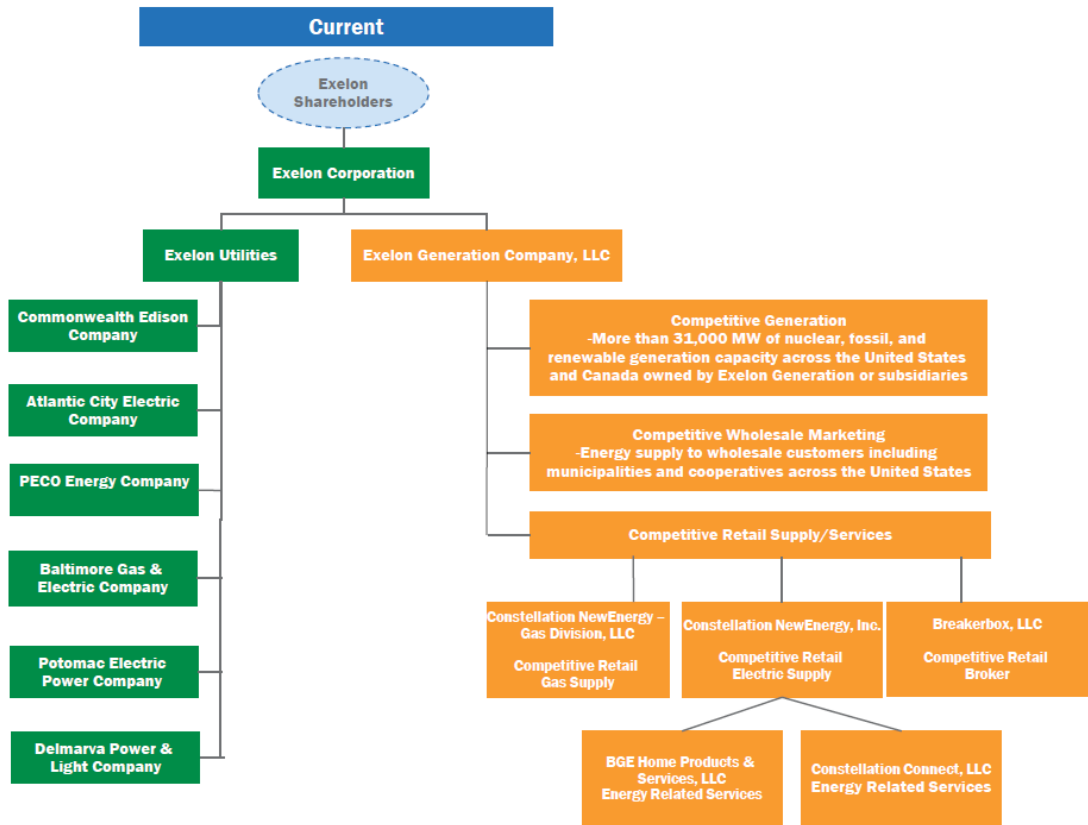


---

Florence Davis  
Assistant General Counsel  
1310 Point Street, 8<sup>th</sup> floor  
Baltimore, MD 21231  
860-992-3116  
[Florence.Davis@exeloncorp.com](mailto:Florence.Davis@exeloncorp.com)

# Attachment A

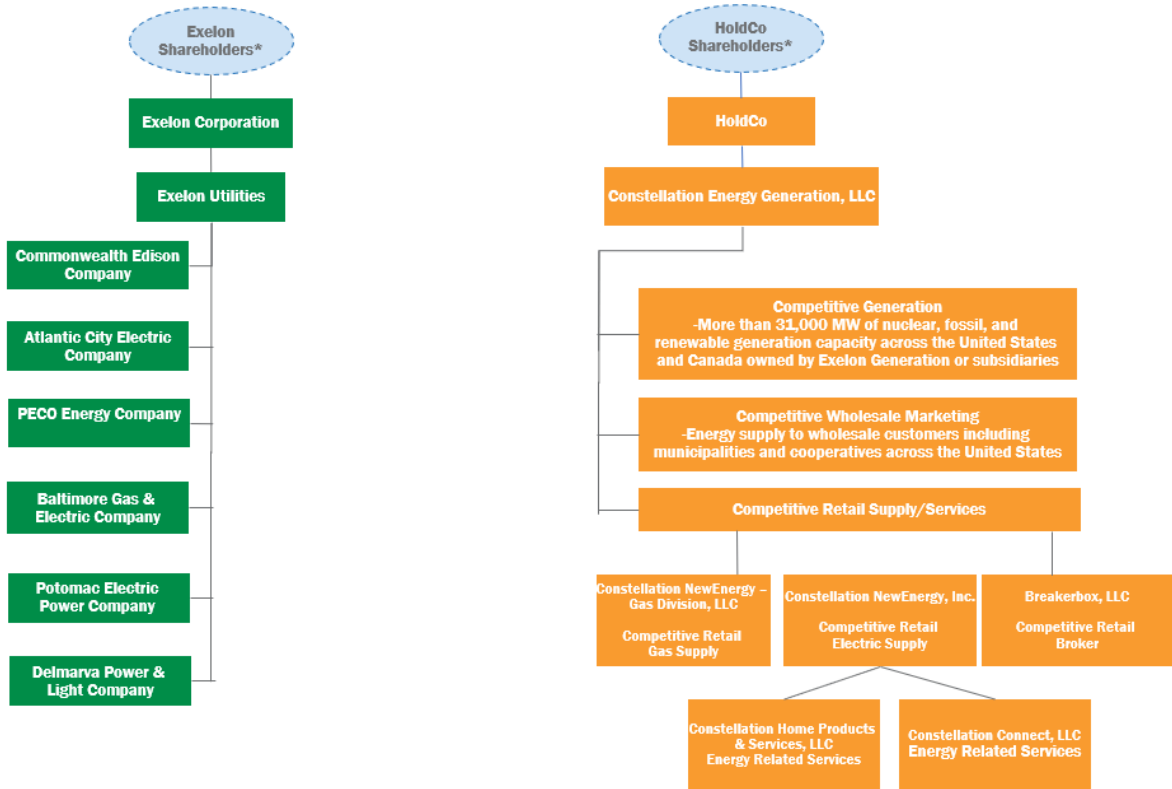
## Pre-Transaction Organizational Chart



## Attachment B

### Post-Transaction Organizational Chart

**Post-Transaction**



\*Shares in both companies freely traded in the market post-Transaction