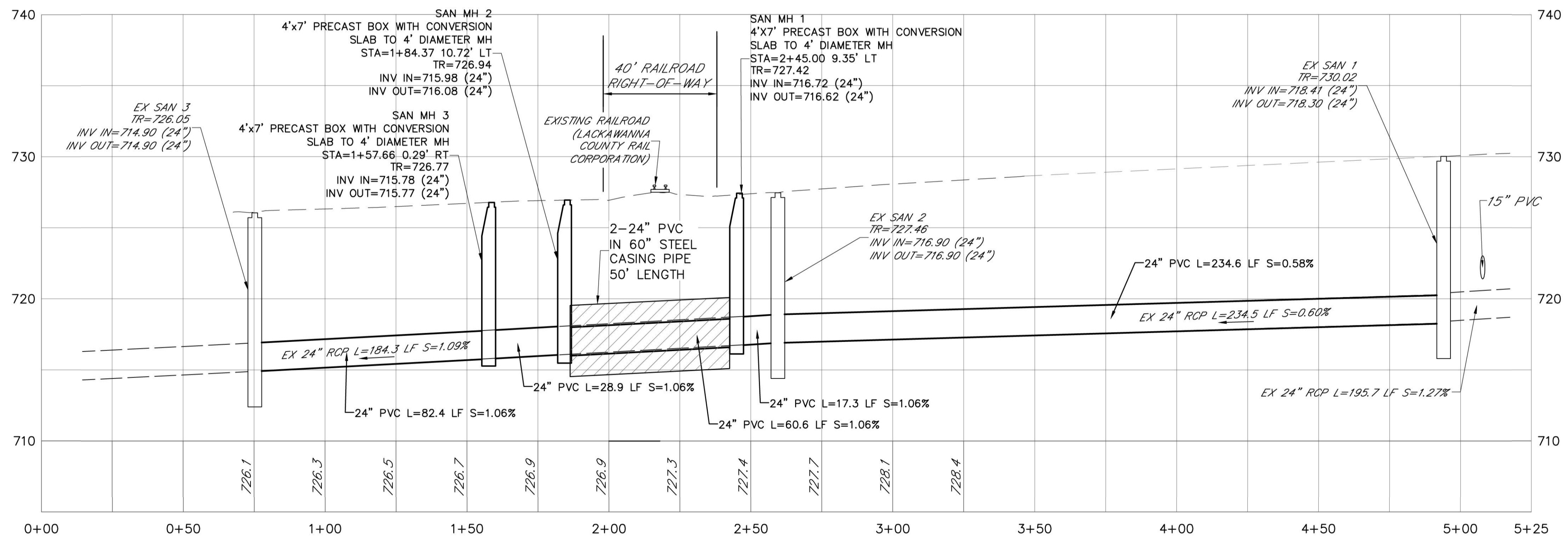


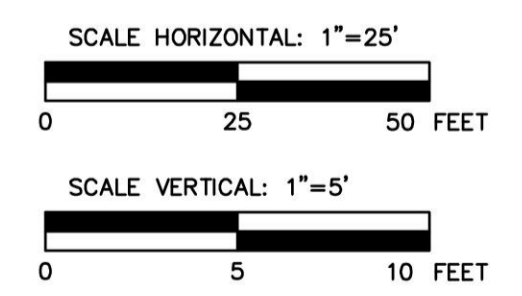
**A-2021-3023777**

**CERTIFIED CORRECT PLANS**  
 Approved by Bureau of Technical Utility Services  
**PA PUBLIC UTILITY COMMISSION**  
 ATTEST Secretary

- LEGEND**
- EXISTING: PAVE EDGE, PROPERTY LINE, LEGAL RIGHT OF WAY LINE, STORM PIPE, EDGE ROAD (DIRT/GRAVEL), FENCE, OVERHEAD ELEC/TEL, GAS LINE, WATER LINE, SANITARY PIPE, UNDERGROUND ELEC, UNDERGROUND TEL, UNDERGROUND COMM/SIGNAL.
  - PROPOSED: GAS VALVE, WATER VALVE, FIRE HYDRANT, LIGHT POLE, SAN. MANHOLE, STORM MANHOLE, TELEPHONE MANHOLE, POWER MANHOLE, INLET, SIGN, FOUND CORNER, JUNCTION BOX, UTILITY POLE, CLEANOUT, TREE, SHRUB.

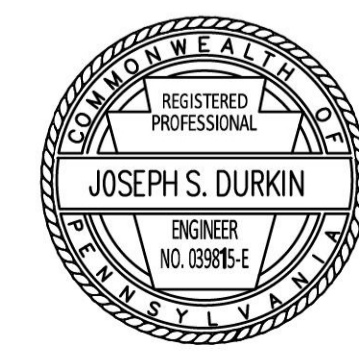


- NOTES:**
- CONNECT PROPOSED PIPES TO EXISTING MANHOLES. MAKE ALL REQUIRED OPENINGS AND SEAL ALL ABANDONED OPENINGS. ALL CONNECTIONS AND REPAIRS TO BE WATERTIGHT. REMOVE AND REBUILD BENCHES AND CHANNELS AS REQUIRED FOR NEW CONSTRUCTION. USE TYPE II CEMENT.
  - FORM INDIVIDUAL CHANNELS WITH SHELVES FOR EACH 24" PIPE THROUGH THE NEW PRECAST BOXES

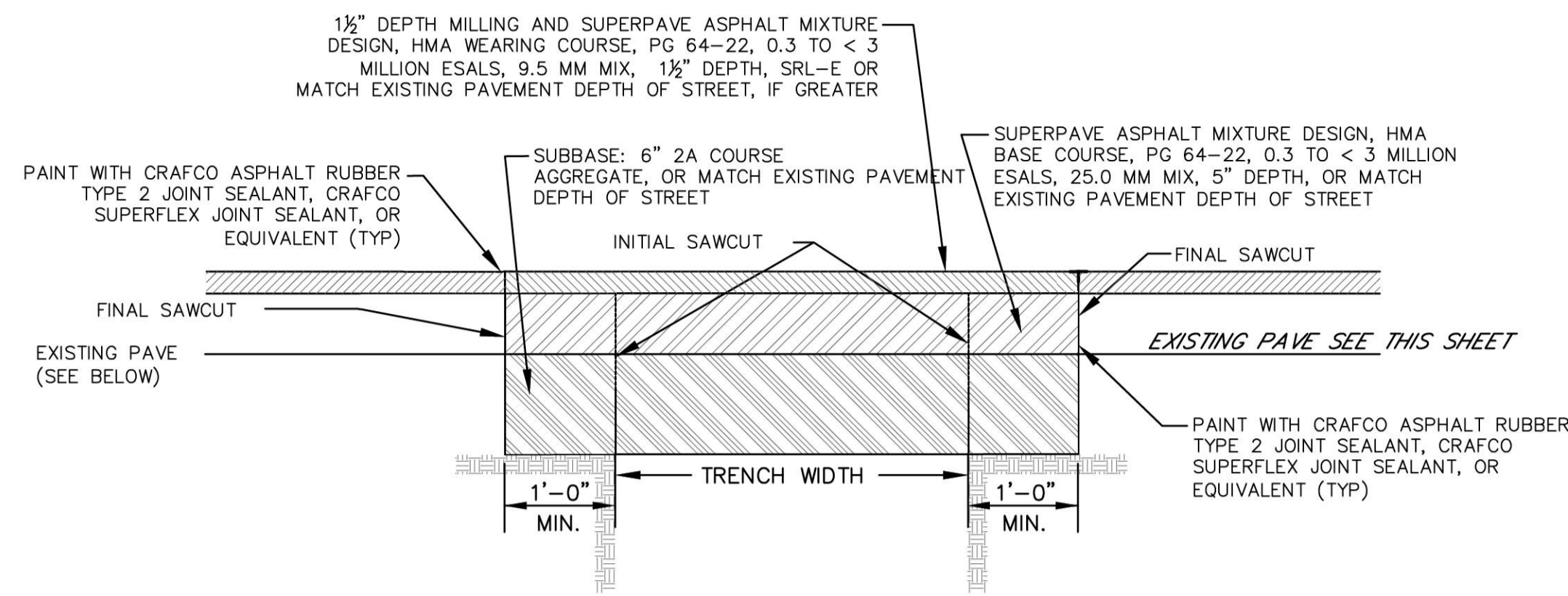


NO.	REVISIONS	DATE	APP'D

DRAWN: \_\_\_\_\_ CHK'D: \_\_\_\_\_ APPROVED: \_\_\_\_\_

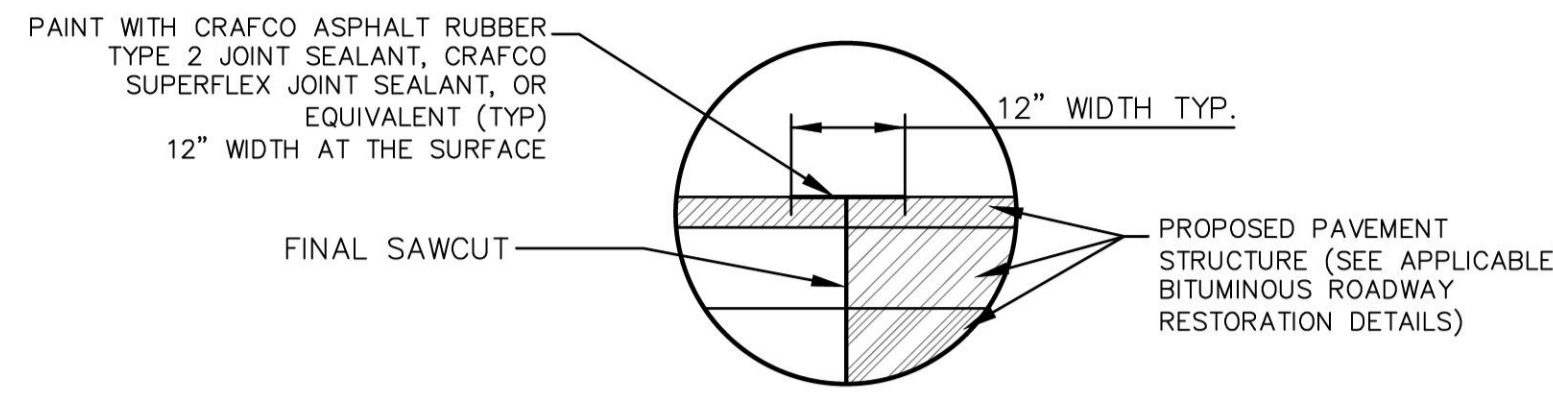


<b>PA AMERICAN WATER COMPANY</b>	
POPLAR STREET AND LCRA SEWER IMPROVEMENTS CITY OF SCRANTON, LACKAWANNA COUNTY PENNSYLVANIA	
<b>PLAN AND PROFILE</b>	
 49 South Main Street Suite 200 Pittston, PA 18640 tel: 570.654.2473 fax: 570.654.6880 www.reillyengineering.com	Drawn By: CM Checked By: JSD Approved By: JSD Date: 1-07-2021 Scale: AS NOTED Project No. 20045.00 Sheet No. 1



**BITUMINOUS ROADWAY RESTORATION**

NOT TO SCALE

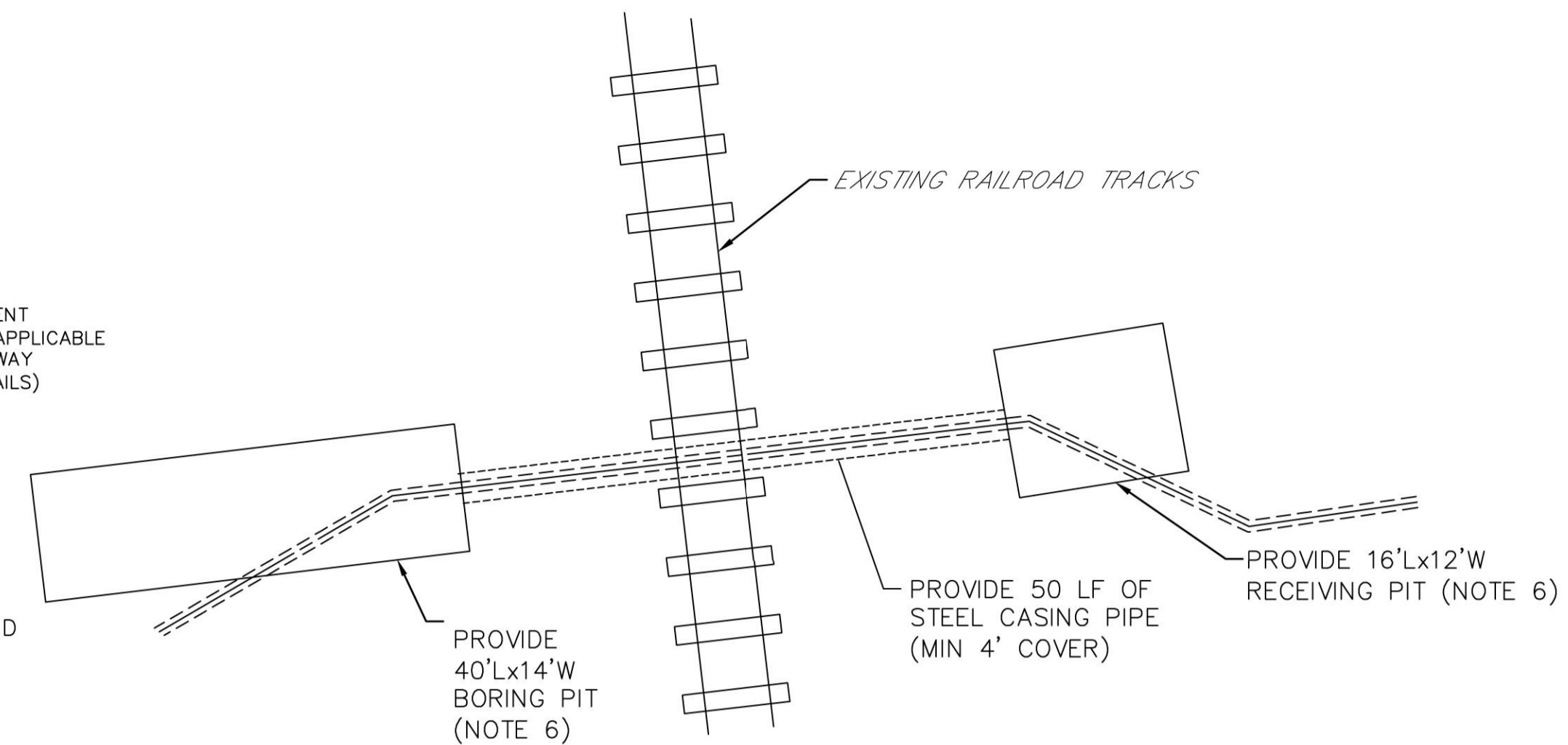


**JOINT DETAIL**

NOT TO SCALE

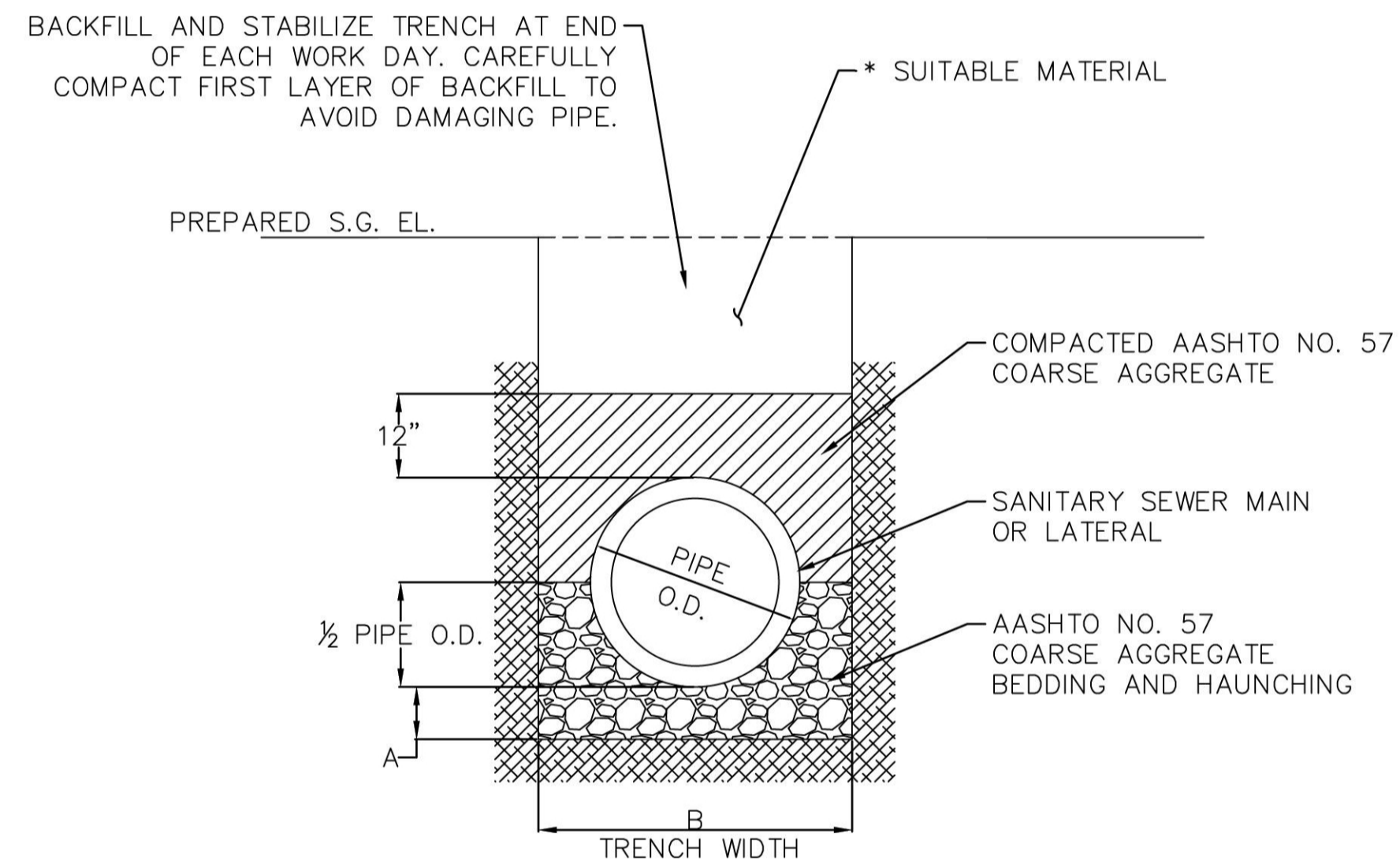
NOTE:

1. APPLICABLE TO BITUMINOUS ROADWAY RESTORATION AND ALL OTHER PAVEMENT JOINTS INCLUDING MILL AND OVERLAY LOCATIONS.



**PLAN**

N.T.S.



**TYPICAL GRAVITY SANITARY SEWER TRENCH DETAIL**

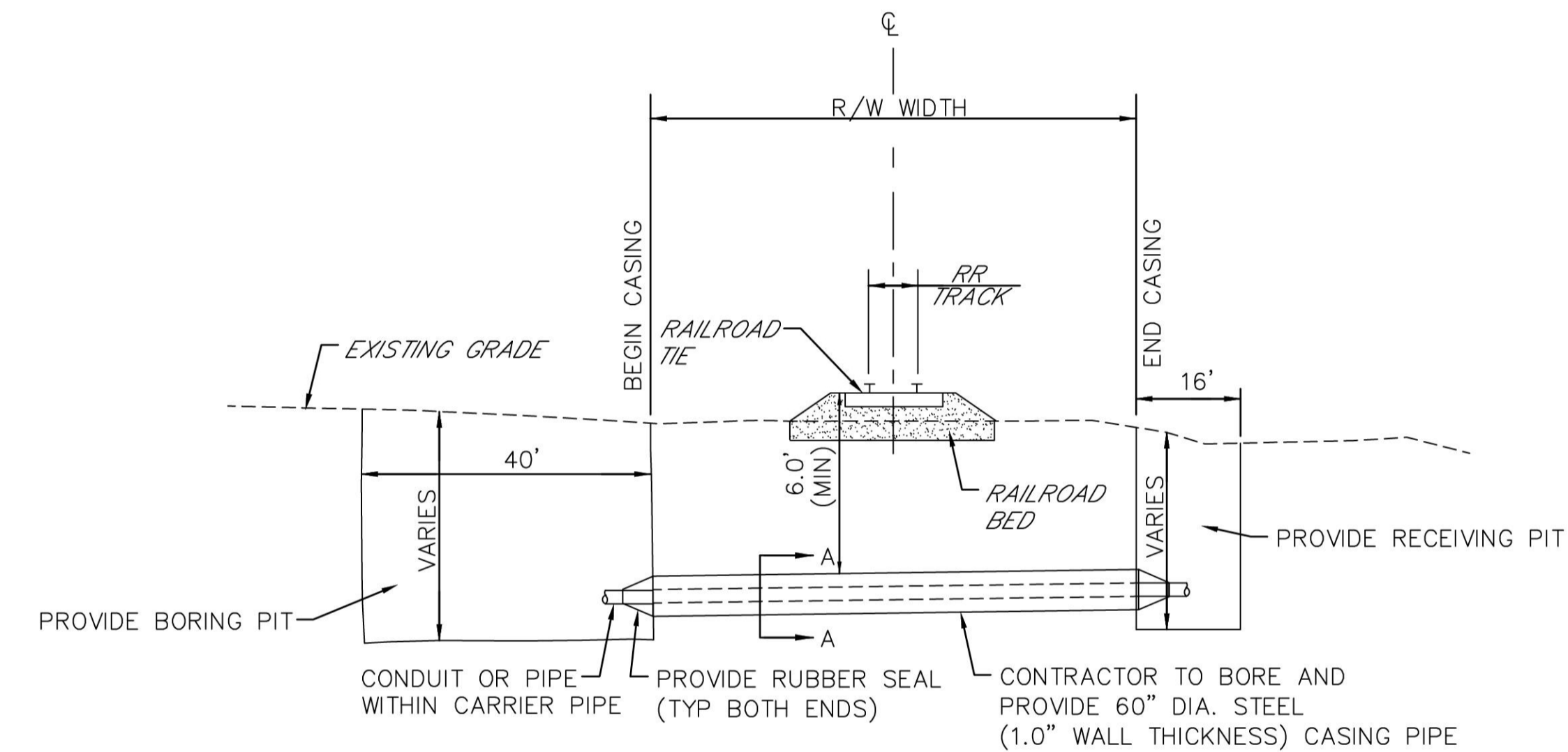
NOT TO SCALE

SIZE/O.D.	A	B**
UP TO 36"	6" MIN.	O.D. + 2'
36" AND LARGER	6" MIN.	O.D. + 4'
LATERAL	4" MIN.	O.D. + 2'

PIPE O.D. REFERS TO PIPE BARREL SECTION NOT PIPE BELL SECTION.

\* SUITABLE MATERIAL = MATERIAL CONTAINING NO DEBRIS, ORGANIC MATTER, FROZEN MATERIAL OR LARGE STONES WITH A DIAMETER GREATER THAN ONE-HALF THE THICKNESS OF THE COMPACTED LAYERS BEING PLACED. MAXIMUM UNCOMPACTED LAYER - 8". WITHIN STATE HIGHWAY, NO. 2A COARSE AGGREGATE SHALL BE USED FOR SUITABLE MATERIAL.

\*\* TRENCH WIDTHS INDICATED APPLY TO ALL WORK WITHIN THE STATE HIGHWAY. TRENCH WIDTHS IN LOCAL ROADS SHALL BE O.D. + 1'-4".



**SECTION A-A**

N.T.S.

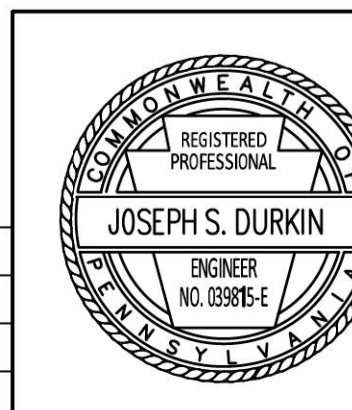
NOTES:

1. CONTRACTOR TO PROVIDE ANY AND ALL NECESSARY SHORING TO STABILIZE THE GROUND SURFACE DURING CASING PIPE INSTALLATION.
2. CARRIER PIPE SHALL BE SECURED WITHIN CASING PIPE BY USE OF STAINLESS STEEL CASING SPACERS PLACED AT 6'-0" MAX. INTERVALS.
3. ONE SPACER SHALL BE PLACED ON THE SPIGOT END OF EACH SEGMENT AT THE LINE MARKING THE LIMIT OF INSERTION INTO THE BELL.
4. ALL AREAS DISTURBED BY THE CONTRACTOR'S OPERATION SHALL BE GRADED, TOP SOILED AND SEEDED AS REQUIRED TO MATCH EXIST. CONDITIONS.
5. USE 60" STEEL ENCASEMENT WITH 1.0" WALL THICKNESS FOR THE PROPOSED 24" PVC SEWER MAIN WITHIN THE RAILROAD RIGHT-OF-WAY.
6. CONTRACTOR TO PROVIDE PITS OF ANY SIZE, AS REQUIRED FOR HIS WORK. ALL PIT EXCAVATION AND BACKFILL OF RELATED SHORING, REGARDLESS OF SIZE, SHALL BE ACCOUNTED FOR IN BID PRICE. PAVEMENT PAY LIMITS ARE LIMITED TO THE PIT SIZES SHOWN.
7. CONTRACTOR TO PROVIDE TEMPORARY DIVERSION AND PUMPING OF ALL SEWER FLOWS.

**RAILROAD RIGHT-OF-WAY SANITARY SEWER BORING DETAIL**

NOT TO SCALE

NO.	REVISIONS	DATE	APP'D



<b>PA AMERICAN WATER COMPANY</b>		Drawn By:
<b>POPLAR STREET AND LCRA SEWER IMPROVEMENTS</b>		Checked By: JSD
CITY OF SCRANTON, LACKAWANNA COUNTY PENNSYLVANIA		Approved By: JSD
<b>DETAILS</b>		Date: 1-07-2021
<b>Reilly</b> ENGINEERING / ENVIRONMENTAL / SURVEYING		Scale: AS NOTED
49 South Main Street Suite 200 Pittston, PA 18640 Tel: 570.654.2473 Fax: 570.654.6880 www.reillyengineering.com		Project No. 20045.00
		Sheet No. <b>3</b>