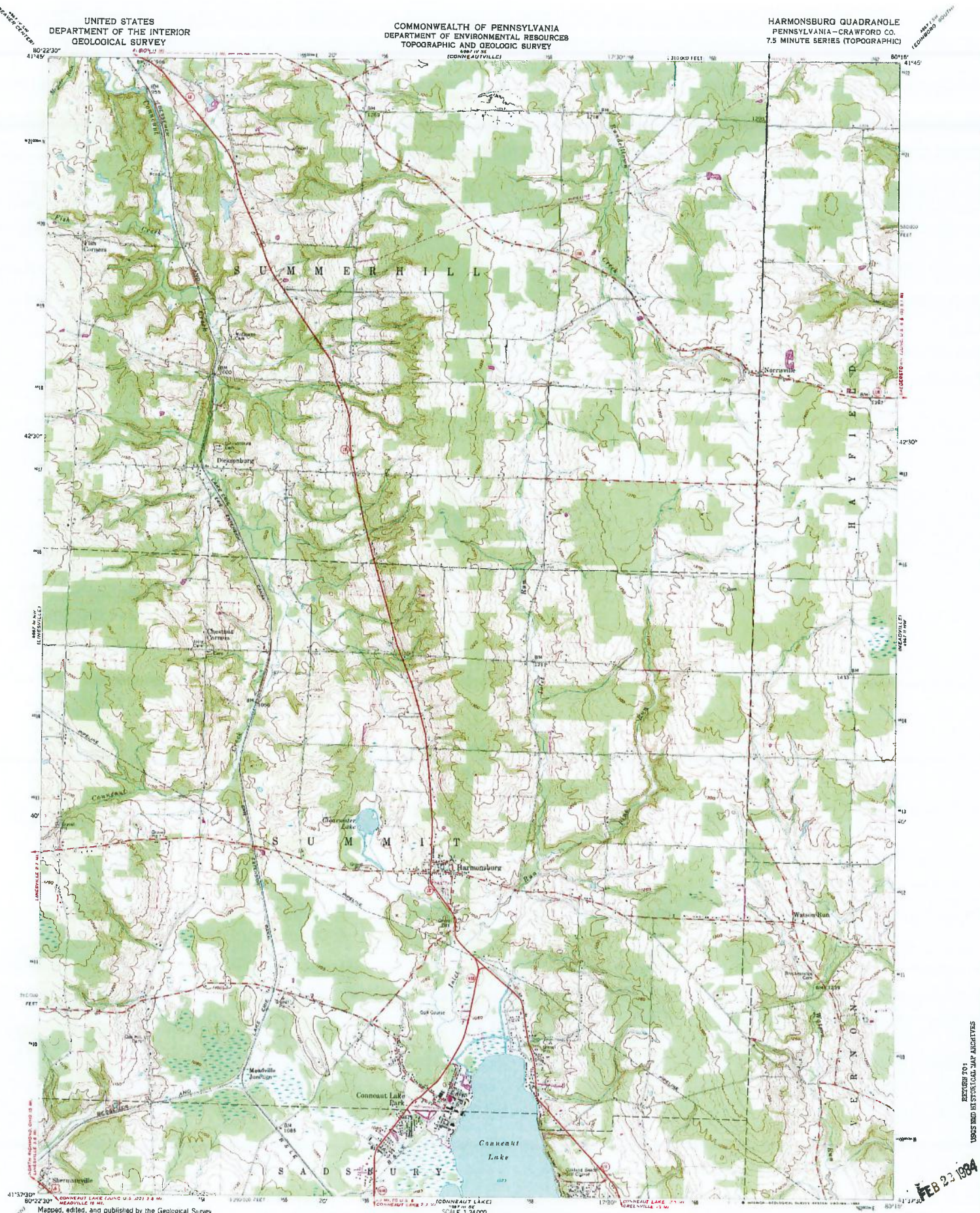


Exhibit B-4



Mapped, edited, and published by the Geological Survey
Control by USGS, USCA&S, USCE
Topography from aerial photographs by photogrammetric methods
Aerial photographs taken 1957, Field check 1969
Projection: Universal Transverse Mercator datum
10,000-foot grid based on Pennsylvania coordinate system,
north zone
1:250,000-scale Universal Transverse Mercator grid ticks,
zone 17, shown in blue
Fine red dashed lines indicate selected fence and field lines
visible on aerial photographs. This information is unchecked
Unchecked observations are shown in brown
Map photorevised 1970
No major culture or drainage changes observed



CONTOUR INTERVAL 10 FEET
DATUM IS MEAN SEA LEVEL

THIS MAP COMPLIES WITH NATIONAL MAP ACCURACY STANDARDS
FOR SALE BY U.S. GEOLOGICAL SURVEY, RESTON, VIRGINIA 22092
A FOLDER DESCRIBING TOPOGRAPHIC MAPS AND SYMBOLS IS AVAILABLE ON REQUEST

ROAD CLASSIFICATION	
Heavy-duty	Light-duty
Medium-duty	Unimproved dirt
U.S. Route	State Route

Revisions shown in purple compiled in cooperation with
State of Pennsylvania agencies from aerial photographs
taken 1970. This information not field checked

HARMONSBURG, PA.
N4137.5-W8015/7.5
PHOTOINSPECTED 1977
1999
PHOTOREVISED 1970
AMS 4967 III NE-BENDES VBS)

FEB 22 1994

RETURN TO:
USGS MID-ATLANTIC MAP ARCHIVES