



**Kristina L. Woods**  
DIRECT LINE: (614) 682-4405  
kwoods@aepenergy.com

**DATE OF DEPOSIT**

March 4, 2022

**MAR 4 2022**

**Via Overnight Delivery**

Rosemary Chiavetta, Secretary  
Pennsylvania Public Utility Commission  
Commonwealth Keystone Building  
400 North Street, 2<sup>nd</sup> Floor, Room N201  
Harrisburg, PA 17120

**PA PUBLIC UTILITY COMMISSION  
SECRETARY'S BUREAU**

**Re: AEP Energy, Inc.'s Annual Petition for Renewal of Bond Reduction  
Docket No. A-2009-2132755 (Electric)**

Dear Ms. Chiavetta:

Please accept this letter as AEP Energy, Inc.'s Annual Petition for Renewal of its Bond Reduction. In support of AEP Energy, Inc.'s eligibility for this continued bond reduction, enclosed please find the following documentation:

1. Proof of Service on Interested Parties
2. Tax Status Letter of Good Standing from PA Department of Revenue;
3. REV-423 Specialty Tax Estimated Payment Form from PA Department of Revenue (Original and Redacted);
4. A Listing of AEP Energy, Inc.'s Gross Receipts for the most recent four quarters (Q1-Q42021) (Original and Redacted);
5. Original bond for \$10,538,173.23, which is equal to 5% of most recent gross receipts.
6. Emails confirming AEPS compliance as well as screenshots from data entry (Original and Redacted).

Please contact me if I can be of further assistance.

Respectfully,

Kristina L. Woods  
Legal Administrator – Regulatory Compliance

Encl.

DATE OF DEPOSIT

MAR 4 2022

PA PUBLIC UTILITY COMMISSION  
SECRETARY'S BUREAU

**Tax Letter of Good Standing**

Bureau of Compliance  
P.O. Box 280231  
Harrisburg, PA 17128-0231  
717-787-3911 (Option 5)  
[www.revenue.pa.gov](http://www.revenue.pa.gov)



Thursday, March 03, 2022

Attention: Daniel E. Ernst, Director of Tax Planning & Operations

RE: AEP Energy Inc  
PO Box 16428  
Columbus OH 43216

Federal EIN: 03-0459115  
Social Security Number:  
Business Partner Number: 1000218543

Dear Requester,

I am writing to confirm that the above-referenced tax accounts for AEP Energy Inc are current. All returns have been filed with payment as of Thursday, March 03, 2022. This confirmation is not intended to represent a "Bulk Sale Clearance" under the provision of section 1403 of the fiscal code. This letter does confirm that the account above is in good standing.

Sincerely,

A handwritten signature in black ink, appearing to read 'Ernard S. Robinson, Jr.', written in a cursive style.

Ernard S. Robinson, Jr  
PA Department of Revenue  
Bureau of Compliance  
Business License Clearance Division

DATE OF DEPOSIT

MAR 4 2022

PA PUBLIC UTILITY COMMISSION  
SECRETARY'S BUREAU

**PA Form REV-423 (Redacted)**



**pennsylvania**  
DEPARTMENT OF REVENUE

**REDACTED ELECTRONIC FUNDS TRANSFER IS RECOMMENDED FOR PAYMENTS OF \$1,000 OR MORE**

**REV-423** (SU) 09-19 (FT)

**PA CORPORATION SPECIALTY TAXES ESTIMATED PAYMENT COUPON**

**REDACTED**

1. Enter account information including file period begin, file period end, Revenue ID, due date, entity name, EIN and complete mailing address.
2. Enter payment(s) required for the appropriate tax type(s) from the list below. Find the four-digit code next to the appropriate tax type and enter it in one of the three boxes to the right. The code will populate into the tax type box on the attached coupon. You may use this coupon to pay up to three tax types with the same file period. Use only one code per box. Be careful when making your selection(s) to ensure your payment(s) is applied to the correct tax type.
3. Payments of \$1,000 or more must be made electronically or by certified or cashier's check remitted in person or by express mail courier. If paying by certified or cashier's check, make it payable to PA Department of Revenue and deliver check and coupon to:

PA DEPARTMENT OF REVENUE  
1854 BROOKWOOD ST  
HARRISBURG PA 17104

4. Payments less than \$1,000 may be made electronically or by mailing the coupon and check payable to PA Department of Revenue to:

PA DEPARTMENT OF REVENUE  
PO BOX 280407  
HARRISBURG PA 17128-0407

Making payments electronically is easy and secure. Learn more by visiting [www.revenue.pa.gov](http://www.revenue.pa.gov) and selecting Online Services.

**Do not mail this coupon if payment is being made electronically.**

5. Signature, title, date, email address and telephone number must be provided by a representative of the entity.

**TAX TYPE**

- Gross Receipts - Telephone Intrastate
- Gross Receipts - Telephone Interstate
- Gross Receipts - Mobile Telecommunications
- Gross Receipts - Electric, Hydro-Electric & Water Power
- Gross Receipts - Transportation (Other than Motor Vehicle)
- Gross Premiums - Domestic Casualty
- Gross Premiums - Domestic Fire
- Gross Premiums - Domestic Life
- Gross Premiums - Foreign Life
- Gross Premiums - Foreign Title
- Gross Premiums - Foreign Casualty
- Gross Premiums - Foreign Fire
- Mutual Thrift Net Income - State S&L
- Mutual Thrift Net Income - Federal S&L
- Public Utility Realty - Utilities

**TAX TYPE CODE**

- 1011
- 1012
- 1013
- 1014
- 1015
- 1021
- 1022
- 1023
- 1024
- 1025
- 1028
- 1029
- 1005
- 1006
- 1020

ENTER TAX TYPE  
CODE HERE

1.	1014
2.	
3.	



**pennsylvania**  
DEPARTMENT OF REVENUE

REV-423 (SU) 09-19 (FT)

PA CORPORATE TAX

**SPECIALTY TAXES ESTIMATED PAYMENT COUPON**

DEPT USE ONLY

File Period Begin  File Period End  Revenue ID  Due Date

Entity Name

EIN

Street Address

City  State  ZIP

USE WHOLE DOLLARS ONLY

TAX TYPE	PAYMENT
1.	1014
2.	
3.	

TOTAL PAYMENT



4230016105

Signature

Title

Date

Email

Telephone

DATE OF DEPOSIT

MAR 4 2022

PA PUBLIC UTILITY COMMISSION  
SECRETARY'S BUREAU

**Gross Receipts Spreadsheet (REDACTED)**

REDACTED

Period	Revenue	kWh
Q1		
Q2		
Q3		
Q4		
Total		

\*Source - 1st thru 4th Qtr 2021 PA EC-Quarterly Report\_Form

## **AEPS Compliance Data (REDACTED)**

DATE OF DEPOSIT

MAR 4 2022

PA PUBLIC UTILITY COMMISSION  
SECRETARY'S BUREAU



# REDACTED

**Kristina L Woods**

---

**From:** Holly P Wheller  
**Sent:** Wednesday, May 5, 2021 9:11 AM  
**To:** Kristina L Woods  
**Subject:** PAAEPS  
**Attachments:** 202012 - PennAEPS.PNG; 202101 - PennAEPS.PNG; 202102 - PennAEPS.PNG

## AEP Energy Partners, Inc. (BlueStar) Load Served

**Instructions:**

Select the month and year for the load that you will be entering. Fill in data for each EDC where you served load during that month. When you're finished, press the "Submit data" button at the bottom of the page. You can continue to change your entries until they are locked.

Month   
Year

Search Month/Year

EDC

EDC Submitted Amount (Mwh)

EGS Submitted Amount (Mwh)

Citizens Electric Company of Lewisburg, PA

Duquesne Light Company

Metropolitan Edison Company

PECO Energy Company

Pennsylvania Electric Company

Pennsylvania Power Company

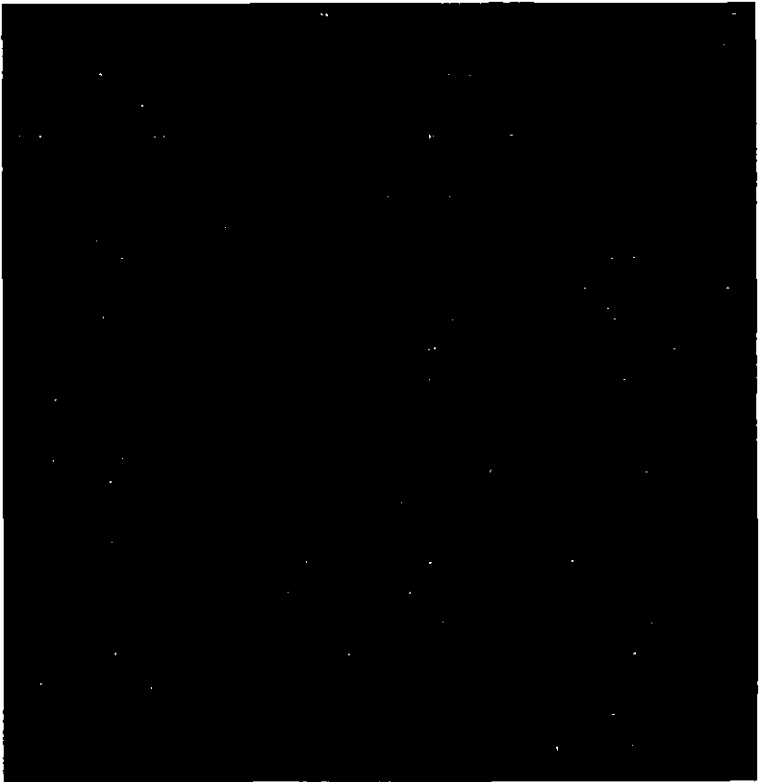
Pike County Light and Power Company

PPL Electric Utilities Corporation (PPL Utilities LSE)

UGI Utilities, Inc.

Wellsboro Electric Company

West Penn Power Company (West Penn Power)



Copy All Entries and Submit Data

Submit Data

## AEP Energy Partners, Inc. (BlueStar) Load Served

**Instructions:**

Select the month and year for the load that you will be entering. Fill in data for each EDC where you served load during that month. When you've finished, press the "Submit data" button at the bottom of the page. You can continue to change your entries until they are locked.

Month:

Year:

EDC

EDC Submitted Amount (Mwh)

EGS Submitted Amount (Mwh)

Citizens Electric Company of Lewisburg, PA

Duquesne Light Company

Metropolitan Edison Company

PECO Energy Company

Pennsylvania Electric Company

Pennsylvania Power Company

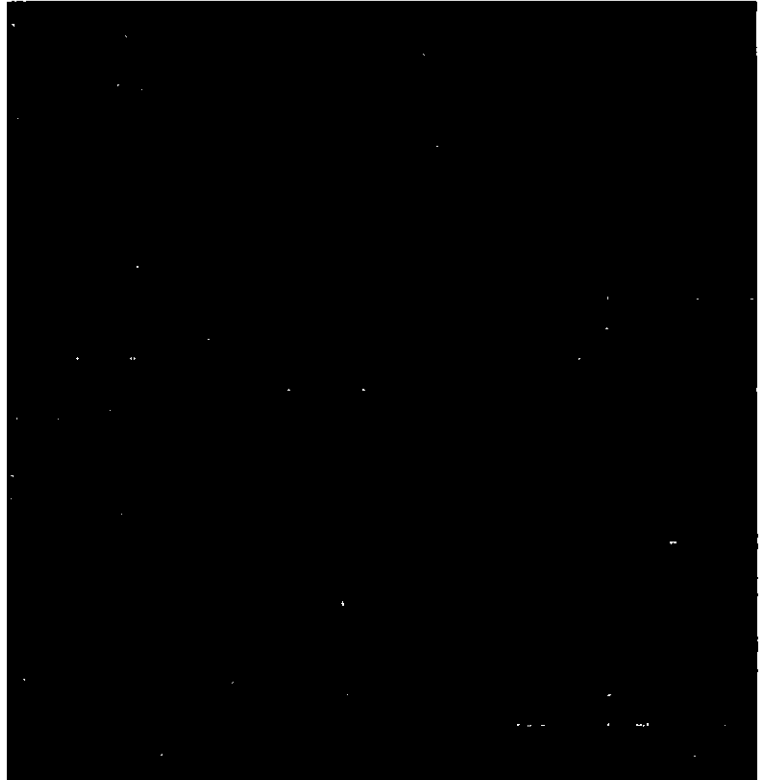
Pike County Light and Power Company

PP&L Electric Utilities Corporation (PP&L Utilities, LSE)

UGI Utilities, Inc.

West Penn Electric Company

West Penn Power Company, (d/b/a Allegheny Power)



## AEP Energy Partners, Inc. (BlueStar) Load Served

**Instructions:**

Select the month and year for the load that you will be entering. Fill in data for each EDC where you served load during that month. When you're finished, press the "Submit data" button at the bottom of the page. You can continue to change your entries until they are locked.

Month

Year

**Submit Data**

EDC

EDC Submitted Amount (Mwh)

EGS Submitted Amount (Mwh)

Citizens Electric Company of Lewisburg, PA

Duquesne Light Company

Metropolitan Edison Company

PECO Energy Company

Pennsylvania Electric Company

Pennsylvania Power Company

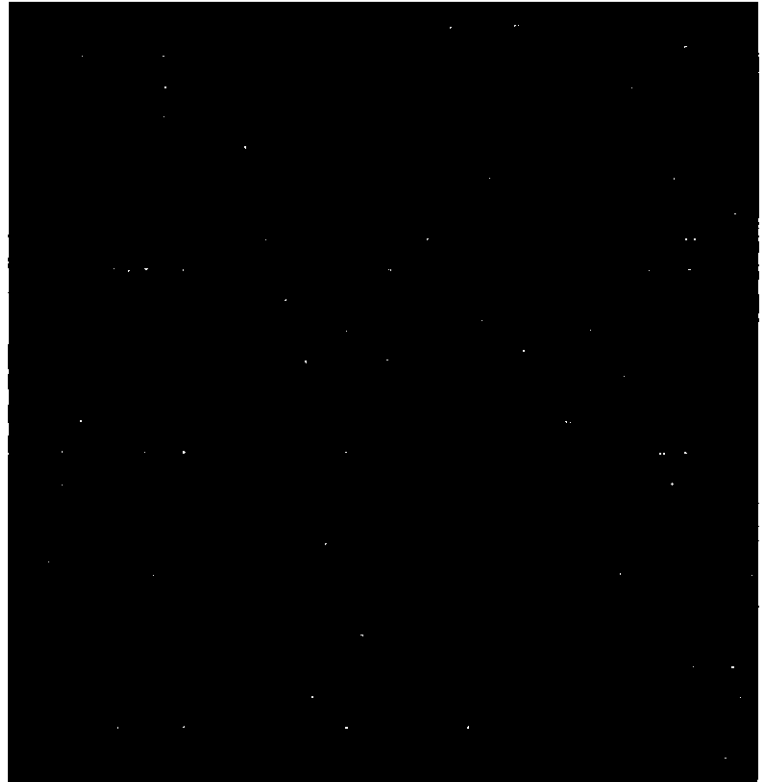
PIA County Light and Power Company

PPL Electric Utilities Corp. dba PPL Utilities LSE

UGI Utilities Inc.

Weisboro Electric Company

West Penn Power Company, dba Allegheny Power



**Copy EDC Values and Submit Data**

**EGS Submit Data**

REDACTED

**Kristina L Woods**

---

**From:** Holly P Wheller  
**Sent:** Thursday, July 1, 2021 5:19 PM  
**To:** Kristina L Woods  
**Subject:** PA AEPS  
**Attachments:** 202103 - PennAEPS.PNG; 202104 - PennAEPS.PNG; 202105 - PennAEPS.PNG

Here you go!

# REDACTED

## AEP Energy Partners, Inc. (BlueStar) Load Served

### Instructions:

Select the month and year for the load that you will be entering. Fill in data for each EDC where you served load during that month. When you've finished, press the "Submit data" button at the bottom of the page. You can continue to change your entries until they are locked.

Month:

Year:

EDC

EDC Submitted Amount (Mwh)

EGS Submitted Amount (Mwh)

Citizens Electric Company of Lewisburg, PA

Duquesne Light Company

Metropolitan Edison Company

PECO Energy Company

Pennsylvania Electric Company

Pennsylvania Power Company

Pike County Light and Power Company

PPL Electric Utilities Corp. (dba PPL Utilities, LSE)

USI Utility, Inc.

Westmore Electric Company

West Penn Power Company, dba Allegheny Power



## AEP Energy Partners, Inc. (BlueStar) Load Served

**Instructions:**

Select the month and year for the load that you will be entering. Fill in data for each EDC where you served load during that month. When you're finished, press the "Submit data" button at the bottom of the page. You can continue to change your entries until they are locked.

Month:   
Year:

EDC	EDC Submitted Amount (Mwh)	EGS Submitted Amount (Mwh)
Delaware Electric Company, LLC (Lebanon, PA)		
Delaware Light Company		
Metropolitan Edison Company		
PECO Energy Company		
Pennsylvania Electric Company		
Pennsylvania Power Company		
Pine County Light and Power Company		
PPL Electric Utilities Corporation (PPL Utilities, LSE)		
UGI Utilities, Inc.		
Yorkshire Electric Company		
West Penn Power Company, d/b/a Allegheny Power		

### AEP Energy Partners, Inc. (BlueStar) Load Served

**Instructions:**

Select the month and year for the load that you will be entering. Fill in data for each EDC where you served load during that month. When you've finished, press the "Submit data" button at the bottom of the page. You can continue to change your entries until they are locked.

Month

Year

EDC	EDC Submitted Amount (Mwh)	EGS Submitted Amount (Mwh)
Citizen's Electric Company, of Lewisburg, PA		
Cuquesne Light Company		
Metropolitan Edison Company		
PECO Energy Company		
Pennsylvania Electric Company		
Pennsylvania Power Company		
Pine County Light and Power Company		
PPL Electric Utilities Corp. dba PPL Utilities - LSE		
UGI Utilities Inc		
Weisberg Electric Company		
West Penn Power Company, dba Allegheny Power		



# REDACTED

**Kristina L Woods**

---

**From:** Holly P Wheller  
**Sent:** Friday, November 5, 2021 11:16 AM  
**To:** Kristina L Woods  
**Subject:** PennAEPS submittal  
**Attachments:** 202106 - PennAEPS.PNG; 202107 - PennAEPS.PNG; 202108 - PennAEPS.PNG

# REDACTED

## AEP Energy Partners, Inc. (BlueStar) Load Served

### Instructions:

Select the month and year for the load that you will be entering. Fill in data for each EDC where you served load during that month. When you've finished, press the "Submit data" button at the bottom of the page. You can continue to change your entries until they are locked.

Month

Year

EDC	EDC Submitted Amount (Mwh)	EGS Submitted Amount (Mwh)
-----	----------------------------	----------------------------

Citizens Electric Company, Wheeling, Pa.

Duquesne Light Company

Metropolitan Edison Company

PECO Energy Company

Pennsylvania Electric Company

Pennsylvania Power Company

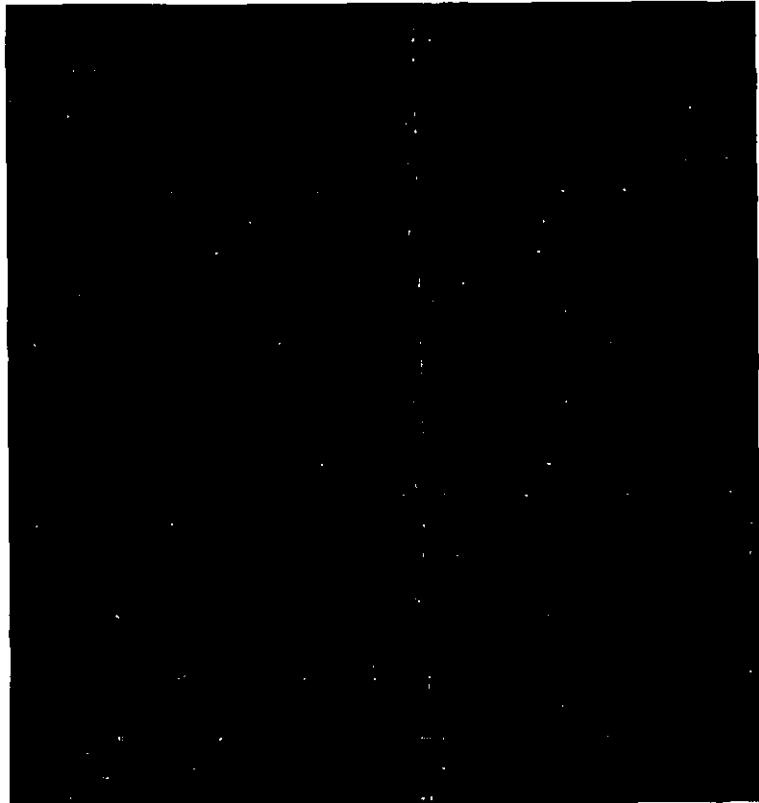
Pike County Light and Power Company

PPC Electric Utility Corporation/PPC Utilities (SE)

UGI Utilities Inc.

Waraboro Electric Company

West Penn Power Company, aka Allegheny Power



# REDACTED

## AEP Energy Partners, Inc. (BlueStar) Load Served

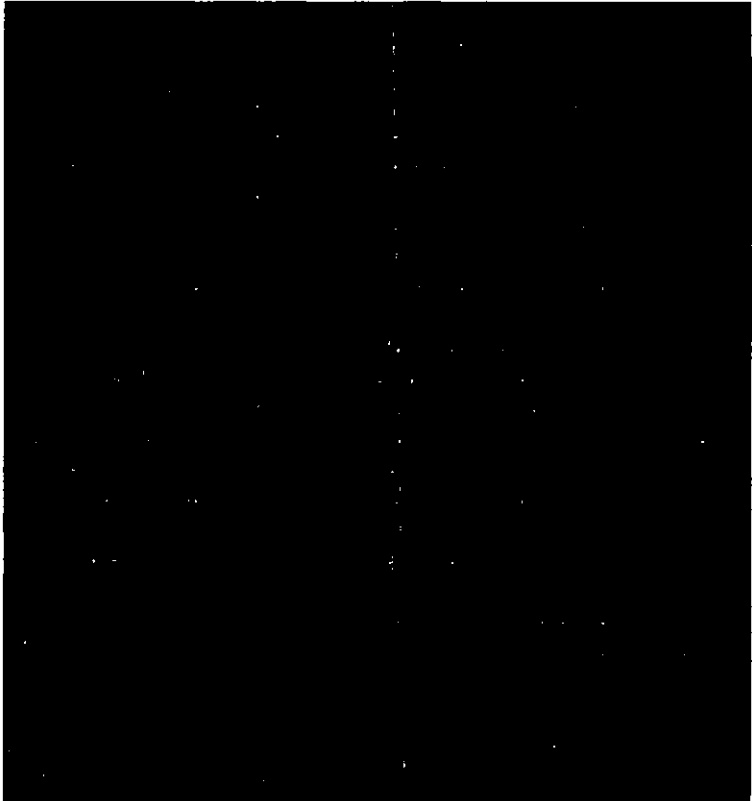
### Instructions:

Select the month and year for the load that you will be entering. Fill in data for each EDC where you served load during that month. When you've finished, press the "Submit data" button at the bottom of the page. You can continue to change your entries until they are locked.

Month:   
Year:

EDC	EDC Submitted Amount (Mwh)	EGS Submitted Amount (Mwh)
-----	----------------------------	----------------------------

- Citizens Electric Company of Lewisburg, PA
- Duquesne Light Company
- Metropolitan Edison Company
- PECO Energy Company
- Pennsylvania Electric Company
- Pennsylvania Power Company
- Pike County Light and Power Company
- PPL Electric Utilities Corp. (dba PPL Utilities - LSE)
- UJI Utilities, Inc.
- Westboro Electric Company
- West Penn Power Company (dba Allegheny Power)



# REDACTED

## AEP Energy Partners, Inc. (BlueStar) Load Served

### Instructions:

Select the month and year for the load that you will be entering. Fill in data for each EDC where you served load during that month. When you've finished, press the "Submit data" button at the bottom of the page. You can continue to change your entries until they are locked.

Month

Year

Submit Data

EDC

EDC Submitted Amount (Mwh)

EGS Submitted Amount (Mwh)

Citizens Electric Company of Lewisburg, PA

Duquesne Light Company

Metropolitan Edison Company

PECO Energy Company

Pennsylvania Electric Company

Pennsylvania Power Company

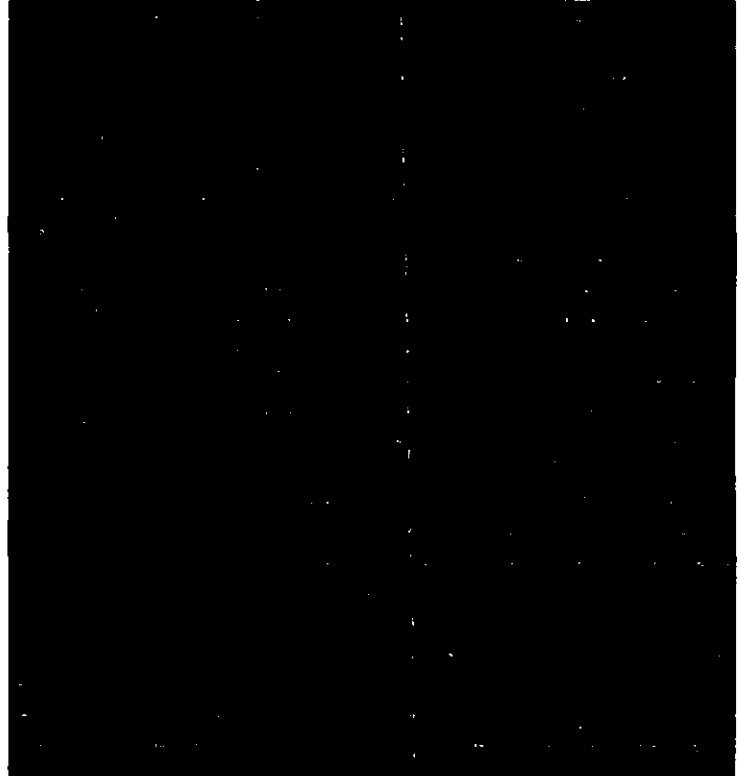
Pike County Light and Power Company

PPL Electric Utilities Corp. dba PPL Utilities US

UGI Utilities, Inc.

Westmoreland Electric Company

West Penn Power Company dba Allegheny Power



Copy (Ctrl+C) Paste (Ctrl+V) Submit Data

Submit Data

REDACTED

**Kristina L Woods**

---

**From:** Holly P Wheller  
**Sent:** Friday, February 4, 2022 8:44 AM  
**To:** Kristina L Woods  
**Subject:** PAAEPS Files  
**Attachments:** 202109 - PennAEPS.PNG; 202110 - PennAEPS.PNG; 202111 - PennAEPS.PNG  
**Categories:** Regulatory Filings

### AEP Energy Partners, Inc. (BlueStar) Load Served

**Instructions:**

Select the month and year for the load that you will be entering. Fill in data for each EDC where you served load during that month. When you've finished, press the "Submit data" button at the bottom of the page. You can continue to change your entries until they are locked.

Month

Year

Save Month/Year

EDC	EDC Submitted Amount (Mwh)	EGS Submitted Amount (Mwh)
Citizens Electric Company of Lewisburg, PA		
Duquesne Light Company		
Metropolitan Edison Company		
PECO Energy Company		
Pennsylvania Electric Company		
Pennsylvania Power Company		
Pike County Light and Power Company		
PPL Electric Utilities Corp. (dba PPL Utilities US&I)		
UGI Utilities, Inc.		
Watsford Electric Company		
West Penn Power Company, dba Allegheny Power		

Copy EDC Entries and Submit data

EDS Submit data

## AEP Energy Partners, Inc. (BlueStar) Load Served

**Instructions:**

Select the month and year for the load that you will be entering. Fill in data for each EDC where you served load during that month. When you've finished, press the "Submit data" button at the bottom of the page. You can continue to change your entries until they are locked.

Month

Year

Submit Data

EDC

EDC Submitted Amount (Mwh)

EGS Submitted Amount (Mwh)

Citizens Electric Company of Lewisburg, PA

Duquesne Light Company

Metropolitan Edison Company

PECO Energy Company

Pennsylvania Electric Company

Pennsylvania Power Company

Pike County Light and Power Company

PPL Electric Utilities Corp. (dba PPL Utilities - LSE)

UGI Utilities, Inc.

Wellsboro Electric Company

West Penn Power Company (dba Allegheny Power)



Copy HTML Tables and Submit data

Copy Submit data

## AEP Energy Partners, Inc. (BlueStar) Load Served

**Instructions:**

Select the month and year for the load that you will be entering. Fill in data for each EDC where you served load during that month. When you've finished, press the "Submit data" button at the bottom of the page. You can continue to change your entries until they are locked.

Month:

Year:

EDC

EDC Submitted Amount (Mwh)

EGS Submitted Amount (Mwh)

Citizens Electric Company of Lehigh Valley, PA

Duquesne Light Company

Metropolitan Edison Company

PECO Energy Company

Pennsylvania Electric Company

Pennsylvania Power Company

Pike County Light and Power Company

PPL Electric Utilities Corporation PPL Utilities, LSE

UGI Utilities, Inc.

Washington Electric Company

West Penn Power Company, d/b/a Allegheny Power





DATE OF DEPOSIT

MAR 4 2022

PA PUBLIC UTILITY COMMISSION  
SECRETARY'S BUREAU

## **Proof of Service on Interested Parties**



**Kristina L. Woods**  
DIRECT LINE: (614) 682-4405  
kwoods@aepenergy.com

March 4, 2022

**Via Regular Mail Delivery**

To All Interested Parties on Attached Service List

**Re: AEP Energy, Inc.'s Annual Petition for Renewal of Bond Reduction**

Dear Sir or Madam:

AEP Energy has submitted to Rosemary Chiavetta, Secretary, Pennsylvania Public Utility Commission, its Annual Petition for the Renewal of its Bond Reduction for its required security to operate as a licensed electric generation supplier in Pennsylvania (License No. A-2009-2132755).

We are providing a copy of the redacted version of the above referenced petition and supporting documentation.

Please contact me if I can be of further assistance.

Respectfully,

Kristina L. Woods  
Legal Administrator – Regulatory Compliance

cc: Rosemary Chiavetta, Secretary, Pennsylvania Public Utility Commission



SERVICE LIST

I hereby certify that I have this day served a true copy of the foregoing document first class mail, upon the persons listed below:

Bureau of Investigation and Enforcement Pennsylvania Public Utility Commission Commonwealth Keystone Building 400 North Street 2 <sup>nd</sup> Floor, F West Harrisburg, PA 17120	Pennsylvania Office of Consumer Advocate 555 Walnut Street 5 <sup>th</sup> Floor, Forum Place Harrisburg, PA 17101
Pennsylvania Office of Small Business Advocate 300 North Second Street Suite 202 Harrisburg, PA 17101	Department of Revenue Bureau of Compliance P.O. Box 280946 Harrisburg, PA 17128-0946
Pennsylvania Office of Attorney General Strawberry Square Harrisburg, PA 17120	Duquesne Light Company Regulatory Affairs 411 Seventh Street, MD 16-4 Pittsburgh, PA 15219
PPL Electric Utilities Legal Department Attn: Paul Russell 2 North Ninth Street Allentown, PA 18101	First Energy (Penn Power, Met-Ed and Penelec) Legal Department 2800 Pottsville Pike Reading, PA 19612
West Penn Power d/b/a Allegheny Power Legal Department 800 Cabin Hill Drive Greenburg, PA 15601	PECO Energy Company Manager, Energy Acquisition 2301 Market Street Philadelphia, PA 19101

This 4 day of March 2022.

Respectfully Submitted,

Kristina Woods  
Legal Administrator – Regulatory Compliance  
**AEP Energy, Inc.**  
1 Riverside Plaza, 20<sup>th</sup> Floor  
Columbus, OH 43215  
Direct 614-682-4405

KRIS WOODS 6146824405 AEP ENERGY, INC. 1 RIVERSIDE PLAZA COLUMBUS OH 43215	LTR	1 OF 1
<b>SHIP TO:</b> ROSEMARY CHIAVETTA PA PUBLIC UTILITY COMMISION ROOM N201 400 NORTH STREET COMMONWEALTH KEYSTONE BUILDING <b>HARRISBURG PA 17120-0200</b>		
	<b>PA 171 9-20</b>	
		
<b>UPS NEXT DAY AIR</b>		<b>1</b>
TRACKING #: 1Z 845 2V8 01 0380 0724		
		
BILLING: P/P		
Reference # 1: PO 80390736		 <sup>TM</sup>
<small>CS 22.0.18. WNTNV50 10.0A 02/2022*</small>		

**RECEIVED**

MAR 7 2022

PA PUBLIC UTILITY COMMISSION  
SECRETARY'S BUREAU