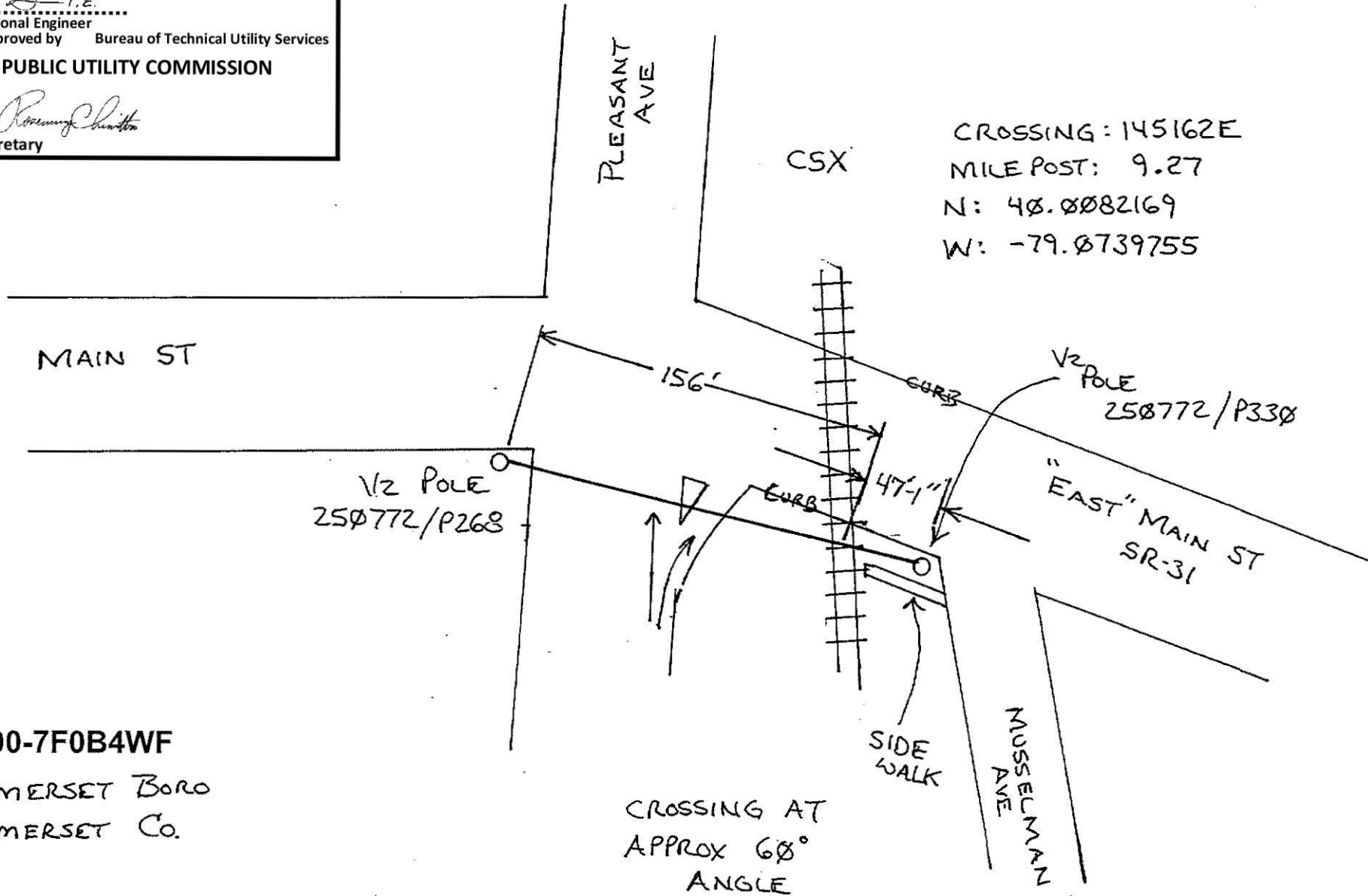


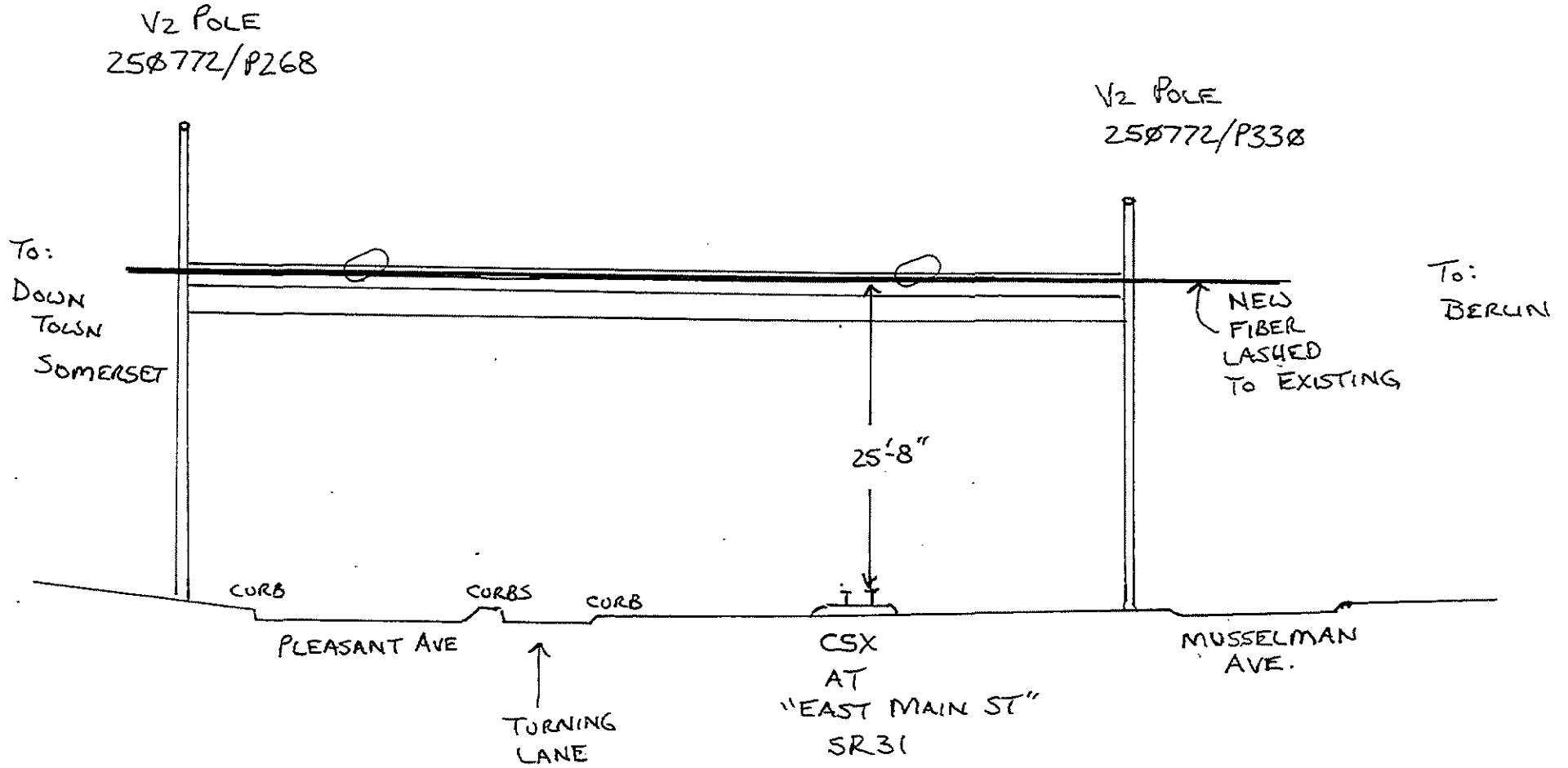
**CERTIFIED CORRECT PLANS**  
*Will M. A. P.E.*  
 Professional Engineer  
 Approved by Bureau of Technical Utility Services  
**PA PUBLIC UTILITY COMMISSION**  
 ATTEST *Rosemary Chivetta*  
 Secretary



**8000-7F0B4WF**  
 SOMERSET BORO  
 SOMERSET CO.

EXHIBIT A

LOOKING  
NORTH



V2 POLE  
25Ø772/P268

V2 POLE  
25Ø772/P33Ø

To:  
DOWN  
TOWNS  
SOMERSET

To:  
BERLIN

NEW  
FIBER  
LASHED  
TO EXISTING

25'-8"

CORB

CORBS

CORB

PLEASANT AVE

TURNING  
LANE

CSX  
AT  
"EAST MAIN ST"  
SR31

MUSSELMAN  
AVE.

8000-7F0B4WF

SOMERSET BORO.  
SOMERSET Co.

MILE POST 9.27  
145162E

N: 4Ø.ØØ82169  
W: -79.Ø739755