



Operations Center  
2839 New Beaver Avenue  
Pittsburgh PA 15233

April 12, 2023

**VIA ELECTRONIC FILING**

Secretary Rosemary Chiavetta  
Pennsylvania Public Utility Commission  
Secretary's Bureau  
Commonwealth Keystone Building  
400 North Street  
Harrisburg PA 17120

**Re: Duquesne Light Company – Docket No. M-2021-3023564**

Secretary Rosemary Chiavetta:

Enclosed please find an amended written outage report for the storm event that occurred in Duquesne Light Company's (Duquesne or the Company) service territory on Saturday, March 25, 2023, pursuant to 52 Pa. Code § 67.1.

This amended report should replace the report filed April 11, 2023 via overnight mail in its entirety. Duquesne Light requests that the original filing be removed from the docket. Upon conversation with PUC staff, the Company determined its filing should be separated into two components: the enclosed outage report and a Request for Exclusion of Major Outage for Reliability Reporting Purposes, which will be filed separately, pursuant to the requirements established by Commission Order at Docket No. M-00991220.

Should you require additional information, please contact me at 412-393-2897.

Sincerely,

A handwritten signature in black ink that reads "Jason T. Keller". The signature is written in a cursive style with a large initial "J".

Jason T. Keller, P.E.  
Director, Operations Center

cc: Dan Searfoorce  
Harry Bidelspach  
Derek Ruhl  
John Van Zant

ELECTRIC UTILITY REPORT OF OUTAGE TO  
PENNSYLVANIA PUBLIC UTILITY COMMISSION  
SECRETARY'S BUREAU  
400 NORTH STREET  
HARRISBURG, PA 17105-3265

**Phone-In Reports:** Always call (717) 941-0003  
Email RA-PUCPEMA@pa.gov

**An original and one copy of this report are to be mailed to the Secretary's Bureau at the address above, even if an electronic copy has been emailed to the address above.**

Information Required:

1. Reporting Utility: Duquesne Light Company  
Address: 2839 New Beaver Avenue  
Pittsburgh PA 15233

2. Name and title of person making report:

Jason Keller  
**(Name)**

Director, Operations Center  
**(Title)**

3. Telephone number: 412-393-2897  
**(Telephone Number)**

4. Date and time initial telephonic report was made to Commission:

Saturday, March 25, 2023 at approximately 1843 hours.

5. Interruption or Outage:

(a) Number of customers affected:

62,276 customers, constituting approximately 10.2% of the 612,157 customers in Duquesne Light's service territory.

(b) Approximate number of outage cases and trouble cases for each county affected during the event:

Allegheny County had a total of 391 troubled locations and 162 outages while Beaver Country had a total of 321 troubled locations and 159 outages for a combined total of 712 troubled locations and 249 outages in Duquesne Light's service territory.



reported the highest wind speed during this storm was 36 mph and the highest wind gust was 50 mph.

For additional weather information, please see section (m) of this report.

- (g) Projected time of restoration:

The projected time of restoration for the majority of our customers was set for 2200 hours on Tuesday March 28, 2023.

- (h) The number of utility workers, contract workers and workers received as mutual aid assigned specifically to the repair work by general function, that is linemen, troublemen, tree crew, and the like:

<b>Utility / Company</b>	<b># of Workers</b>	<b>General Function</b>
Duquesne Light	169	Lineworkers
Duquesne Light	43	Troubleshooters
Duquesne Light	7	Substations
Duquesne Light	9	Underground
DLC - 11 Cut Above - 70 Nelson - 69 Penn Line – 64 Wright - 33	247	Vegetation Management / Tree contractors
Sargent - 27 Henkels and McCoy – 27 JW Didado - 8	62	Lineworker contractors

- (i) The date and time of the first information of a service interruption:

Saturday March 25, 2023 at 1233 hours.

- (j) The date and time that repair crews were assembled:

Duquesne Light lineworkers and troubleshooters were already on duty when the storm began impacting our service area Saturday March 25, 2023 at 1233. Staffing was increased, and our Duquesne Light crews and contractors worked through the night to restore power to all affected customers.

- (k) The actual time that service was restored to the last affected customer:

Service was restored to the last affected customer by this storm event on Wednesday March 29, 2023 at 1249 hours.

- (l) A general description of the physical damage sustained by the utility facilities as a result of the interruption/outage:

During this event, Duquesne Light completed 712 cases of trouble consisting of 325 primary wires, 4 cables, 294 secondary and services, 25 transformers and 64 broken poles.

- (m) If the interruption / outage event was weather-related, the utility’s weather reports, outlooks, or scenarios for the day before and the day of the interruption / outage event:

On Friday March 24, 2023 at 0500 hours:

- Duquesne Light’s weather service forecast for March 25 called for a high temperature of 63 degrees, winds gusting to 40 mph, with a 99% chance of rain to 0.3 inches.
- The National Weather Service issued a Wind Advisory for portions of Allegheny and Beaver Counties from 0300 to 2000 hours on Saturday March 25, 2023.

On Saturday March 25, 2023 at 0500 hours:

- Duquesne Light’s weather service forecast for Saturday March 25, 2023 called for a high temperature of 67 degrees, winds gusting to 51 mph, with a 100% chance of rain to 0.3 inches.
- The National Weather Service revised their Wind Advisory for portions of Allegheny and Beaver Counties to between 1600 and 2300 hours on Saturday March 25, 2023.

Additional weather information is included at the end of this report.

- (n) If the interruption / outage event caused approximate outages that exceed 10% or more of customers in the utility’s entire service territory, rank the event in terms of the number and duration of outages and provide 2 comparable events, including the number and duration of outages for those comparable events:

Event and Rank	Event Date	Number of Outages	Duration of Outages
Winter Storm Avery	11/15/18	63,344	4 days 4 hrs
Thunderstorms	3/25/23	62,276	4 days, 0 hrs
Thunderstorms	6/13/21	51,771	5 days, 1 hrs

Remarks:

Duquesne Light communicated storm restoration updates to our customers and the media through our [duquesnelight.com](http://duquesnelight.com) website, Facebook and Twitter. Weather information, photos and news articles are attached.

Outage Case	Municipality	Customers Affected	Duration	Start Time	Restoration Time
2350913	HAMPTON	45	1448	3/25/23 20:07	3/26/23 20:15
2350914	OHARA	34	945	3/25/23 16:45	3/26/23 8:30
2350916	NORTH SIDE (PGH)	1911	754	3/25/23 20:26	3/26/23 9:00
2350917	ROSS	30	1470	3/25/23 14:25	3/26/23 14:55
2350918	INDIANA	9	1525	3/25/23 17:35	3/26/23 19:00
2350920	PINE	2	962	3/26/23 1:08	3/26/23 17:10
2350921	ROSS	3	2064	3/25/23 19:47	3/27/23 6:11
2350922	BLAWNOX	1	365	3/26/23 13:00	3/26/23 19:05
2350923	WEST DEER	12	1066	3/26/23 6:45	3/27/23 0:31
2350924	NEW SEWICKLEY	58	2577	3/25/23 15:28	3/27/23 10:25
2350925	HAMPTON	10	2501	3/25/23 19:19	3/27/23 13:00
2350926	OHARA	44	1519	3/25/23 18:41	3/26/23 20:00
2350927	RICHLAND	26	2049	3/25/23 19:26	3/27/23 5:35
2350929	NORTH SIDE (PGH)	1744	500	3/25/23 16:55	3/26/23 1:15
2350930	RICHLAND	13	2426	3/25/23 16:39	3/27/23 9:05
2350934	MCCANDLESS	83	753	3/25/23 19:34	3/26/23 8:07
2350935	INDIANA	1511	662	3/25/23 18:57	3/26/23 5:59
2350937	BEAVER	3	2434	3/25/23 15:41	3/27/23 8:15
2350939	RESERVE	3	1887	3/25/23 19:23	3/27/23 2:50
2350940	CHESWICK BORO	2	1564	3/25/23 14:56	3/26/23 17:00
2350942	HAMPTON	28	655	3/26/23 0:45	3/26/23 11:40
2350944	FOX CHAPEL	60	469	3/26/23 20:00	3/27/23 3:49
2350946	MILLVALE	10	1451	3/25/23 18:29	3/26/23 18:40
2350953	HOPEWELL	18	1283	3/25/23 23:22	3/26/23 20:45
2350954	INDUSTRY	1	4001	3/25/23 14:34	3/28/23 9:15
2350955	HOPEWELL	1	3870	3/25/23 16:23	3/28/23 8:53
2350958	NORTH VERSAILLES	3	1022	3/25/23 18:18	3/26/23 11:20
2350959	MOON	36	2452	3/25/23 18:58	3/27/23 11:50
2350960	FRANKLIN PARK	3	1962	3/25/23 16:58	3/27/23 1:40
2350961	MONACA	2	2435	3/25/23 18:23	3/27/23 10:58
2350962	ROCH TWP	3	857	3/26/23 13:13	3/27/23 3:30
2350963	JEFFERSON	2	1467	3/25/23 14:58	3/26/23 15:25
2350966	VERONA	15	1078	3/25/23 18:56	3/26/23 12:54
2350967	SEWICKLEY HEIGHTS	21	830	3/28/23 11:10	3/29/23 1:00
2350968	WEST DEER	2	2482	3/25/23 19:33	3/27/23 12:55
2350969	HAMPTON	9	433	3/26/23 6:17	3/26/23 13:30
2350970	ALIQUIPPA	4	2365	3/25/23 17:55	3/27/23 9:20
2350971	NORTH VERSAILLES	2	615	3/25/23 17:45	3/26/23 4:00
2350972	HAZELWOOD (PGH)	2	1504	3/25/23 18:48	3/26/23 19:52

Outage Case	Municipality	Customers Affected	Duration	Start Time	Restoration Time
2350974	HAMPTON	21	412	3/25/23 18:48	3/26/23 1:40
2350975	PLUM	2	1736	3/25/23 16:34	3/26/23 21:30
2350977	REGENT SQUARE (PGH)	39	912	3/25/23 17:33	3/26/23 8:45
2350979	NORTH VERSAILLES	26	918	3/25/23 18:52	3/26/23 10:10
2350980	PENN HILLS	3	2389	3/25/23 16:21	3/27/23 8:10
2350981	CHURCHILL	2	1768	3/25/23 16:02	3/26/23 21:30
2350983	PENN HILLS	353	453	3/25/23 16:53	3/26/23 0:26
2350985	BALDWIN BORO	2	415	3/25/23 22:20	3/26/23 5:15
2350986	MONROEVILLE	1623	689	3/25/23 17:46	3/26/23 5:15
2350987	AMBRIDGE	8	5394	3/25/23 16:21	3/29/23 10:15
2350993	MONROEVILLE	2	1097	3/25/23 19:08	3/26/23 13:25
2350994	MONROEVILLE	36	1192	3/25/23 19:18	3/26/23 15:10
2350995	CASTLE SHANNON	2	1729	3/25/23 16:02	3/26/23 20:51
2350997	BRENTWOOD	2	1315	3/25/23 16:00	3/26/23 13:55
2350998	CENTER	31	1562	3/26/23 10:02	3/27/23 12:04
2350999	CHURCHILL	12	369	3/27/23 5:06	3/27/23 11:15
2351000	OHIOVILLE	2	2895	3/25/23 18:15	3/27/23 18:30
2351002	NEW SEWICKLEY	82	2602	3/25/23 15:08	3/27/23 10:30
2351003	SWISSVALE	2	1579	3/25/23 16:06	3/26/23 18:25
2351004	BEAVER FALLS	1	3402	3/25/23 14:38	3/27/23 23:20
2351005	ALIQUIPPA	2	3608	3/25/23 19:21	3/28/23 7:29
2351006	PLUM	3	973	3/25/23 17:32	3/26/23 9:45
2351007	PLUM	70	699	3/25/23 20:56	3/26/23 8:35
2351009	INDEPENDENCE	2	3009	3/25/23 14:11	3/27/23 16:20
2351010	HARMONY	2	1550	3/25/23 16:25	3/26/23 18:15
2351012	BETHEL PARK	15	382	3/26/23 12:08	3/26/23 18:30
2351014	HOPEWELL	1	2238	3/25/23 16:22	3/27/23 5:40
2351015	SEWICK HLS	12	2867	3/25/23 17:01	3/27/23 16:48
2351017	NEW SEWICKLEY	64	1651	3/25/23 18:04	3/26/23 21:35
2351018	TURTLE CREEK	3	534	3/25/23 17:36	3/26/23 2:30
2351020	MONACA	2	3064	3/25/23 17:56	3/27/23 21:00
2351022	LAWRENCEVILLE (PGH)	1	1538	3/25/23 16:32	3/26/23 18:10
2351023	SEWICKLEY HEIGHTS	1	2871	3/25/23 19:49	3/27/23 19:40
2351024	INDIANA	262	2555	3/25/23 22:25	3/27/23 17:00
2351028	PLUM	48	446	3/26/23 0:46	3/26/23 8:12
2343480	WILKINSBURG	321	1488	3/26/23 12:20	3/27/23 13:08
2343478	EAST MCKEESPORT	329	457	3/25/23 17:42	3/26/23 1:19

Outage Case	Municipality	Customers Affected	Duration	Start Time	Restoration Time
2343458	WILKINSBURG	394	412	3/25/23 18:20	3/26/23 1:12
2351030	NORTH SIDE (PGH)	2	1409	3/25/23 14:36	3/26/23 14:05
2351031	INDUSTRY	45	3114	3/25/23 16:42	3/27/23 20:36
2351032	CHURCHILL	10	1020	3/26/23 1:44	3/26/23 18:44
2351034	AMBRIDGE	3	706	3/25/23 20:14	3/26/23 8:00
2351035	BRENTWOOD	22	2369	3/26/23 7:06	3/27/23 22:35
2351036	AVALON	104	1568	3/25/23 15:54	3/26/23 18:02
2351038	WHITEHALL	24	928	3/25/23 23:02	3/26/23 14:30
2351039	ALIQUIPPA	39	1284	3/25/23 17:06	3/26/23 14:30
2351040	CASTLE SHANNON	3	1939	3/25/23 18:36	3/27/23 2:55
2351041	DAUGHERTY	1	2992	3/25/23 16:28	3/27/23 18:20
2351042	NORTH SIDE (PGH)	2	835	3/25/23 21:50	3/26/23 11:45
2351047	SEWICKLEY HEIGHTS	2	1553	3/28/23 10:49	3/29/23 12:42
2351048	CARNEGIE	1457	991	3/25/23 18:19	3/26/23 10:50
2351049	MONACA	85	1716	3/25/23 15:34	3/26/23 20:10
2351052	ROCH BORO	633	522	3/25/23 16:25	3/26/23 1:07
2351053	BALDWIN TWP	2	2040	3/25/23 17:28	3/27/23 3:28
2351054	ECONOMY	37	1641	3/25/23 16:26	3/26/23 19:47
2351055	RICHLAND	6	962	3/25/23 18:18	3/26/23 10:20
2351056	MOON	16	1251	3/26/23 3:47	3/27/23 0:38
2351057	GREENTREE	3	1341	3/25/23 16:39	3/26/23 15:00
2343429	MONROEVILLE	3080	1356	3/25/23 16:38	3/26/23 15:14
2351066	CENTER	6	1734	3/25/23 15:10	3/26/23 20:04
2351069	MANCHESTER (PGH)	3	2202	3/25/23 12:33	3/27/23 1:15
2351070	HANOVER	1	3328	3/25/23 15:57	3/27/23 23:25
2351071	MONACA	2	2911	3/25/23 15:37	3/27/23 16:08
2351072	WEST END (PGH)	268	713	3/25/23 16:30	3/26/23 4:23
2351075	OHARA	1037	698	3/26/23 16:36	3/27/23 4:14
2351076	ROBINSON	578	383	3/25/23 13:35	3/25/23 19:58
2351079	RICHLAND	92	1696	3/25/23 16:33	3/26/23 20:49
2351090	BEAVER FALLS	24	1843	3/26/23 10:52	3/27/23 17:35
2343434	CONWAY	243	1032	3/26/23 19:49	3/27/23 13:01
2343430	INDEPENDENCE TWP	280	1199	3/25/23 16:14	3/26/23 12:13
2351093	MOON	404	3027	3/25/23 16:32	3/27/23 18:59
2351094	SEWICKLEY	22	983	3/28/23 8:31	3/29/23 0:54
2351095	WATERWORKS (PGH)	44	3194	3/26/23 8:31	3/28/23 13:45
2343483	FREEDOM	2490	1663	3/25/23 15:47	3/26/23 19:30
2351096	MCCANDLESS	69	800	3/26/23 7:36	3/26/23 20:56
2351100	MONACA	2	3094	3/25/23 17:56	3/27/23 21:30

Outage Case	Municipality	Customers Affected	Duration	Start Time	Restoration Time
2351101	HOPEWELL	3	1118	3/26/23 3:14	3/26/23 21:52
2351102	CENTER	21	843	3/26/23 4:42	3/26/23 18:45
2351106	RICHLAND	84	1696	3/25/23 16:33	3/26/23 20:49
2351107	MIDLAND	2	2062	3/26/23 11:03	3/27/23 21:25
2351108	SCOTT	397	1236	3/25/23 16:56	3/26/23 13:32
2351109	BALDWIN TWP	2	1568	3/25/23 16:27	3/26/23 18:35
2351111	OHIOVILLE	41	3475	3/25/23 17:01	3/28/23 2:56
2351112	SEWICKLEY	35	1586	3/26/23 8:04	3/27/23 10:30
2351115	ALIQUIPPA	1	3324	3/25/23 14:16	3/27/23 21:40
2351117	ALIQUIPPA	19	1200	3/27/23 4:23	3/28/23 0:23
2351119	COLLIER	10	1298	3/25/23 17:37	3/26/23 15:15
2351120	COLLIER	91	378	3/26/23 18:27	3/27/23 0:45
2351122	MCCANDLESS	7	2435	3/25/23 23:10	3/27/23 15:45
2351124	FOX CHAPEL	236	1009	3/25/23 19:05	3/26/23 11:54
2351125	NEW SEWICKLEY	6	1411	3/26/23 4:02	3/27/23 3:33
2351127	RESERVE	2	2672	3/25/23 20:03	3/27/23 16:35
2343426	HEIDELBERG	978	4532	3/25/23 15:44	3/28/23 19:16
2351128	NORTH BRADDOCK	16	913	3/26/23 1:47	3/26/23 17:00
2351130	HAMPTON	27	1010	3/26/23 18:15	3/27/23 11:05
2351131	BRIDGEVILLE BORO	876	1968	3/25/23 16:22	3/27/23 1:10
2351132	VANPORT	21	1284	3/25/23 18:56	3/26/23 16:20
2351133	CENTER	30	2360	3/25/23 20:30	3/27/23 11:50
2351134	BRIGHTON	2	2497	3/25/23 15:38	3/27/23 9:15
2351136	MOON	32	1624	3/25/23 18:23	3/26/23 21:27
2351138	BADEN	33	484	3/26/23 3:50	3/26/23 11:54
2351139	CRAFTON	9	1298	3/25/23 17:37	3/26/23 15:15
2351140	MIDLAND	170	3062	3/26/23 16:18	3/28/23 19:20
2351142	HARMONY	2	1709	3/25/23 16:21	3/26/23 20:50
2351143	PENN HILLS (PGH)	83	776	3/25/23 23:01	3/26/23 11:57
2351145	MONROEVILLE	12	2144	3/25/23 23:16	3/27/23 11:00
2351147	TURTLE CREEK	3	1231	3/25/23 23:29	3/26/23 20:00
2351148	BLOOMFIELD (PGH)	31	1102	3/25/23 17:23	3/26/23 11:45
2351152	LAWRENCEVILLE (PGH)	25	683	3/27/23 5:22	3/27/23 16:45
2351153	BALDWIN BORO	38	472	3/26/23 19:44	3/27/23 3:36
2351155	SEWICKLEY	23	2731	3/25/23 19:07	3/27/23 16:38
2351156	ECONOMY	2670	543	3/25/23 18:01	3/26/23 3:04
2351157	BLOOMFIELD (PGH)	19	1234	3/25/23 16:26	3/26/23 13:00
2351158	ALIQUIPPA	252	3222	3/25/23 14:39	3/27/23 20:21

Outage Case	Municipality	Customers Affected	Duration	Start Time	Restoration Time
2351161	PLUM	42	1246	3/26/23 4:44	3/27/23 1:30
2351162	SEWICKLEY HEIGHTS	1	3296	3/25/23 20:16	3/28/23 3:12
2351163	SEWICKLEY HEIGHTS	44	3895	3/25/23 17:54	3/28/23 10:49
2351164	MOON	1	2733	3/26/23 13:21	3/28/23 10:54
2351165	SEWICKLEY	18	3789	3/25/23 22:51	3/28/23 14:00
2351169	BELL ACRES	352	2621	3/25/23 16:00	3/27/23 11:41
2351170	FINDLAY	799	1313	3/25/23 17:04	3/26/23 14:57
2351171	OHIOVILLE	2	3152	3/25/23 15:38	3/27/23 20:10
2351172	CARNEGIE	4	675	3/26/23 18:15	3/27/23 5:30
2351174	BADEN	3	1750	3/26/23 3:55	3/27/23 9:05
2351177	CENTER	8	2560	3/25/23 16:17	3/27/23 10:57
2351178	BRIGHTON	20	1704	3/26/23 7:06	3/27/23 11:30
2351179	CENTER	2	3286	3/26/23 6:14	3/28/23 13:00
2351180	CENTER	6	3460	3/25/23 15:17	3/28/23 0:57
2351184	CENTER	4	941	3/27/23 18:25	3/28/23 10:06
2351188	OHIOVILLE	2	2905	3/25/23 16:23	3/27/23 16:48
2351190	MIDLAND	566	2106	3/25/23 14:02	3/27/23 1:08
2343472	GEORGETOWN	165	822	3/25/23 22:14	3/26/23 11:56
2351194	GREENE	3	1615	3/26/23 16:55	3/27/23 19:50
2351195	OHIOVILLE	23	707	3/27/23 2:24	3/27/23 14:11
2351196	NEW SEWICKLEY	25	1439	3/25/23 15:46	3/26/23 15:45
2351197	ROCH BORO	21	2885	3/26/23 2:10	3/28/23 2:15
2351198	ECONOMY	393	3049	3/25/23 15:11	3/27/23 18:00
2351201	BEAVER FALLS	16	607	3/26/23 13:53	3/27/23 0:00
2351202	BALDWIN BORO	3	1586	3/25/23 16:25	3/26/23 18:51
2351203	FRANKLIN TWP	393	1920	3/26/23 5:00	3/27/23 13:00
2351204	FOX CHAPEL	707	471	3/25/23 19:45	3/26/23 3:36
2343449	SEWICKLEY	2215	706	3/25/23 16:05	3/26/23 3:51
2343431	MIDLAND	6187	713	3/25/23 14:02	3/26/23 1:55
2351209	ROCH BORO	220	1349	3/25/23 15:26	3/26/23 13:55
2351210	ECONOMY	10	1191	3/26/23 13:39	3/27/23 9:30
2351211	CORAOPOLIS	3	2835	3/25/23 15:06	3/27/23 14:21
2351212	NEW SEWICKLEY	173	4271	3/25/23 16:25	3/28/23 15:36
2351213	NEW SEWICKLEY	4	600	3/25/23 16:19	3/26/23 2:19
2351214	MCKEES ROCKS	4	590	3/26/23 7:20	3/26/23 17:10
2351218	AMBRIDGE	2	2492	3/25/23 16:51	3/27/23 10:23
2351223	INDEPENDENCE	11	1909	3/26/23 14:26	3/27/23 22:15
2351224	SHERADEN (PGH)	3	1311	3/25/23 21:29	3/26/23 19:20
2351225	CARNEGIE	5	1195	3/25/23 22:50	3/26/23 18:45

Outage Case	Municipality	Customers Affected	Duration	Start Time	Restoration Time
2351227	OHIOVILLE	12	1901	3/27/23 11:59	3/28/23 19:40
2351229	INDUSTRY	2	4565	3/25/23 15:25	3/28/23 19:30
2351230	FOX CHAPEL	56	2596	3/25/23 21:17	3/27/23 16:33
2351233	CASTLE SHANNON	2	1221	3/25/23 19:59	3/26/23 16:20
2351235	TROY HILL (PGH)	33	1558	3/25/23 17:32	3/26/23 19:30
2351237	MT LEBANON	3	1270	3/25/23 16:50	3/26/23 14:00
2351238	OHIOVILLE	1	5596	3/25/23 15:33	3/29/23 12:49
2351244	MOUNT WASHINGTON (PGH)	3	2017	3/25/23 16:34	3/27/23 2:11
2351245	INDEPENDENCE	233	630	3/26/23 3:28	3/26/23 13:58
2351247	BEAVER FALLS	2	2998	3/25/23 15:42	3/27/23 17:40
2351252	GREENE	2	2615	3/25/23 23:24	3/27/23 18:59
2351253	GREENE	4	3978	3/25/23 16:42	3/28/23 11:00
2343459	COLLIER	232	913	3/25/23 16:49	3/26/23 8:02
2351256	MOON	2	4849	3/25/23 16:30	3/29/23 1:19
2351257	HOPEWELL	24	3437	3/25/23 19:43	3/28/23 5:00
2351259	ALIQUIPPA	2	3288	3/25/23 21:57	3/28/23 4:45
2351260	ECONOMY	3	454	3/28/23 8:26	3/28/23 16:00
2351261	HANOVER	80	3912	3/25/23 17:48	3/28/23 11:00
2343423	NORTH SIDE (PGH)	219	1066	3/25/23 14:11	3/26/23 7:57
2351271	AMBRIDGE	4	3112	3/25/23 14:18	3/27/23 18:10
2351274	BEAVER	75	2486	3/25/23 15:24	3/27/23 8:50
2351275	OHIOVILLE	4	3491	3/25/23 15:20	3/28/23 1:31
2351277	SEWICKLEY	41	1781	3/26/23 9:07	3/27/23 14:48
2351278	ECONOMY	21	3044	3/25/23 14:25	3/27/23 17:09
2351279	ALIQUIPPA	2	2913	3/25/23 16:39	3/27/23 17:12
2351282	INDEPENDENCE	1	3515	3/25/23 17:05	3/28/23 3:40
2343461	PINE	273	908	3/25/23 17:05	3/26/23 8:13
2351285	THORNBURG	12	4394	3/25/23 13:35	3/28/23 14:49
2351287	INDUSTRY	1	2241	3/26/23 2:54	3/27/23 16:15
2351289	COLLIER	1	1841	3/25/23 20:19	3/27/23 3:00
2351290	SCOTT	27	1200	3/25/23 21:00	3/26/23 17:00
2351291	ROCH TWP	9	3546	3/25/23 16:24	3/28/23 3:30
2351292	HILL DISTRICT (PGH)	2	1805	3/25/23 14:51	3/26/23 20:56
2351293	INDUSTRY	3	2868	3/25/23 18:12	3/27/23 18:00
2351294	RACCOON	35	2866	3/25/23 14:28	3/27/23 14:14
2351317	ALIQUIPPA	78	2677	3/25/23 14:43	3/27/23 11:20
2351319	EAST ROCHESTER	2	3413	3/25/23 15:30	3/28/23 0:23
2351321	ECONOMY	18	2728	3/25/23 18:00	3/27/23 15:28

Outage Case	Municipality	Customers Affected	Duration	Start Time	Restoration Time
2351324	OHIO	4	2937	3/25/23 16:41	3/27/23 17:38
2351326	BRIGHTON	24	662	3/27/23 8:40	3/27/23 19:42
2351331	HANOVER	3	3037	3/25/23 17:48	3/27/23 20:25
2351337	BRIGHTON	19	1218	3/27/23 14:42	3/28/23 11:00
2351338	BRIGHTON	2	3122	3/25/23 14:48	3/27/23 18:50
2351345	NEW SEWICKLEY	157	2483	3/25/23 15:32	3/27/23 8:55
2351350	FREEDOM	40	2487	3/25/23 19:18	3/27/23 12:45
2351351	NEW SEWICKLEY	62	1424	3/26/23 10:44	3/27/23 10:28
2351352	WHITEHALL	16	3085	3/25/23 16:23	3/27/23 19:48
2343424	BRIGHTON	1834	3279	3/25/23 15:36	3/27/23 22:15
2343433	CRESCENT	449	395	3/25/23 16:30	3/25/23 23:05
2351353	DAUGHERTY	36	3189	3/26/23 9:11	3/28/23 14:20
2351354	ECONOMY	41	4168	3/25/23 17:59	3/28/23 15:27
2351355	HOPEWELL	61	2597	3/25/23 16:41	3/27/23 11:58
2351356	INDEPENDENCE	23	2083	3/26/23 7:57	3/27/23 18:40
2351357	MOON	3	4460	3/25/23 16:27	3/28/23 18:47
2351358	DAUGHERTY	39	2817	3/25/23 18:11	3/27/23 17:08
2351359	DAUGHERTY	124	1792	3/25/23 17:43	3/26/23 23:35
2351360	FINDLAY	6	2093	3/26/23 8:56	3/27/23 19:49
2351361	HANOVER	13	3243	3/25/23 16:13	3/27/23 22:16
2351415	OHIOVILLE	6	723	3/26/23 16:12	3/27/23 4:15
2351612	SEWICKLEY	2	1788	3/27/23 11:41	3/28/23 17:29

### Saturday March 25, 2023 Forecast

SATURDAY 03-25-2023

	Threat Timing								Temperature				Wind				Precipitation				Thunderstorm	
	00-03	03-06	06-09	09-12	12-15	15-18	18-21	21-00	Low	High	Wind Chill	Heat Index	Dir	Sustained	Gusts	Max Isolated Gusts	Probability	Rain	Snow	Ice	Type	T-storm Prob.
Raccoon Service Center									45	64	38	64	S	20	48	62	100	0.37	0.00	0.00	Rain	4
Edison Service Center									45	64	39	64	S	20	47	61	99	0.31	0.00	0.00	Rain	4
Preble Service Center									46	66	40	66	S	20	49	64	99	0.30	0.00	0.00	Rain	4
Penn Hills Service Center									45	64	40	64	S	21	51	64	99	0.28	0.00	0.00	Rain	4
McKeesport Service Center									46	67	42	66	S	19	46	59	98	0.19	0.00	0.00	Rain	4

## Friday March 24, 2023 forecast for Saturday March 25, 2023

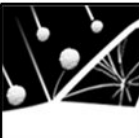
SATURDAY 03-25-2023

	Threat Timing							Temperature				Wind			Precipitation				Thunderstorm		
	00-03	03-06	06-09	09-12	12-15	15-18	18-21	21-00	Low	High	Wind Chill	Heat Index	Dir	Sustained	Gusts	Max Isolated Gusts	Probability	Rain	Snow	Ice	Type
Raccoon Service Center								45	63	37	63	S	27	40	53	99	0.79	0.00	0.00	Rain	7
Edison Service Center								45	64	37	64	S	29	44	55	98	0.55	0.00	0.00	Rain	7
Preble Service Center								45	65	38	64	S	29	43	57	98	0.53	0.00	0.00	Rain	7
Penn Hills Service Center								45	64	37	64	S	28	43	57	98	0.54	0.00	0.00	Rain	7
McKeesport Service Center								46	67	39	66	S	28	43	57	98	0.59	0.00	0.00	Rain	7

# Severe Thunderstorm Watch


**Threat Information...**

**HAIL**



Scattered Hail  
Up To One Inch

**WIND**



Isolated Gusts  
Up To 65 MPH  
Possible, an  
isolated tornado

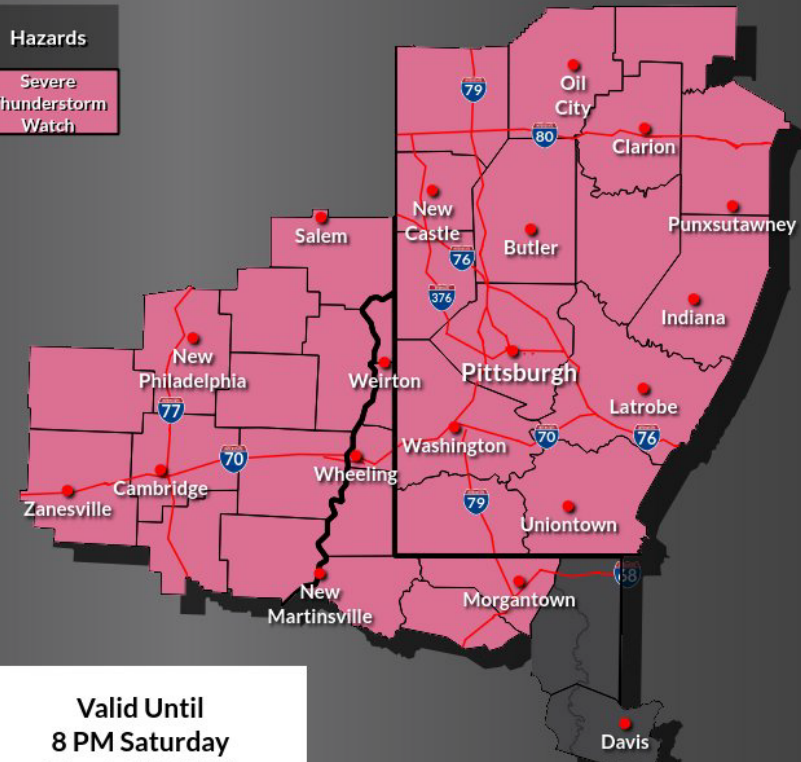
**Severe Thunderstorm  
Watch Means...**

Weather conditions are favorable for damaging winds and/or large hail.



In a Watch area you should have a storm ready plan.

Hazards

Severe Thunderstorm Watch



**Valid Until  
8 PM Saturday  
March 25, 2023**

National Weather Service  
Pittsburgh, PA



NWS Pittsburgh @NWSPittsburgh · Mar 25

When will the high wind gusts end? Well, the probability of 45mph or higher decreases from 60% to 30% after 10pm; less than 10% after midnight. Tomorrow, conditions will be pleasant (i.e. calm).

**Forecast Wind Gusts (mph)**

	Sat 7pm	Sat 8pm	Sat 9pm	Sat 10pm	Sat 11pm	Sun 12am	Sun 1am	Sun 2am	Sun 3am	Sun 4am	Sun 5am	Sun 6am	Sun 7am
Butler, PA	48	46	46	45	41	40	36	31	29	29	26	24	21
Cambridge, OH	38	45	40	35	35	31	24	22	15	13	12	10	9
Canaan Valley, WV	32	37	40	40	38	38	37	35	35	33	33	31	28
Columbiana, OH	39	46	46	47	41	38	33	33	25	23	22	18	16
DuBois, PA	32	45	45	45	44	39	39	37	35	33	32	30	28
Fairmont, WV	36	48	44	39	32	33	28	26	22	21	18	14	13
Franklin, PA	44	46	47	45	41	39	38	36	30	30	28	26	24
Indiana, PA	47	41	46	41	41	40	35	31	32	30	26	25	22
Latrobe, PA	45	43	46	45	41	40	35	33	30	29	26	24	22
New Castle, PA	51	47	47	47	39	39	35	30	25	23	22	18	15
New Philadelphia, OH	43	46	33	31	37	32	28	24	17	17	14	13	10
Parsons, WV	33	41	43	38	36	33	30	28	25	23	22	20	18
Pittsburgh, PA	39	51	47	46	39	37	33	32	28	26	24	22	18
Morgantown, WV	45	48	46	40	35	33	29	26	22	21	18	15	14
Wheeling, WV	47	46	46	39	38	33	29	26	21	20	18	15	13

Forecast Updated: March 25, 2023 7:02 PM

1 16 48 8.831

000  
 CDUS41 KPBZ 252121  
 CLIPIT

CLIMATE REPORT  
 NATIONAL WEATHER SERVICE PITTSBURGH PA  
 521 PM EDT SAT MAR 25 2023

.....  
 ...THE PITTSBURGH PA CLIMATE SUMMARY FOR MARCH 25 2023...  
 VALID TODAY AS OF 0500 PM LOCAL TIME.

CLIMATE NORMAL PERIOD 1991 TO 2020  
 CLIMATE RECORD PERIOD 1871 TO 2023

WEATHER ITEM	OBSERVED VALUE	TIME (LST)	RECORD VALUE	YEAR	NORMAL VALUE	DEPARTURE FROM NORMAL	LAST YEAR
.....							
TEMPERATURE (F)							
TODAY							
MAXIMUM	69	246 PM	84	1929	53	16	45
MINIMUM	43	311 AM	9	1940	33	10	38
				1974			
AVERAGE	56				43	13	42
PRECIPITATION (IN)							
TODAY	0.23		0.90	2013	0.10	0.13	0.03
MONTH TO DATE	2.50				2.54	-0.04	2.69
SINCE MAR 1	2.50				2.54	-0.04	2.69
SINCE JAN 1	8.06				8.12	-0.06	10.78
SNOWFALL (IN)							
TODAY	0.0		4.7	2013	0.1	-0.1	0.0
MONTH TO DATE	3.1				6.9	-3.8	12.8
SINCE MAR 1	3.1				6.9	-3.8	12.8
SINCE JUL 1	17.6				42.4	-24.8	39.6
SNOW DEPTH	0						
DEGREE DAYS							
HEATING							
TODAY	9				22	-13	23
MONTH TO DATE	638				660	-22	516
SINCE MAR 1	638				660	-22	516
SINCE JUL 1	4341				4831	-490	4424
COOLING							
TODAY	0				0	0	0
MONTH TO DATE	0				0	0	0
SINCE MAR 1	0				0	0	0
SINCE JAN 1	0				0	0	0

WIND (MPH)  
 HIGHEST WIND SPEED 36 HIGHEST WIND DIRECTION W (270)  
 HIGHEST GUST SPEED 50 HIGHEST GUST DIRECTION W (280)  
 AVERAGE WIND SPEED 13.1

SKY COVER  
 POSSIBLE SUNSHINE MM  
 AVERAGE SKY COVER 0.9

WEATHER CONDITIONS  
 THE FOLLOWING WEATHER WAS RECORDED TODAY.  
 THUNDERSTORM  
 LIGHT RAIN  
 FOG

RELATIVE HUMIDITY (PERCENT)  
 HIGHEST 90 600 AM  
 LOWEST 27 300 PM  
 AVERAGE 59

.....

THE PITTSBURGH PA CLIMATE NORMALS FOR TOMORROW

	NORMAL	RECORD	YEAR
MAXIMUM TEMPERATURE (F)	53	81	1945
MINIMUM TEMPERATURE (F)	33	13	1940 2001

SUNRISE AND SUNSET

MARCH 25 2023.....	SUNRISE	716 AM EDT	SUNSET	738 PM EDT
MARCH 26 2023.....	SUNRISE	715 AM EDT	SUNSET	739 PM EDT

- INDICATES NEGATIVE NUMBERS.  
 R INDICATES RECORD WAS SET OR TIED.  
 MM INDICATES DATA IS MISSING.  
 T INDICATES TRACE AMOUNT.

000  
 NOUS41 KPBZ 261359  
 PNSPBZ  
 OHZ039>041-048>050-057>059-068-069-PAZ007>009-013>016-  
 020>023-029-031-073>076-WVZ001>004-012-021-509>514-270158-

Public Information Statement  
 Spotter Reports  
 National Weather Service Pittsburgh PA  
 958 AM EDT Sun Mar 26 2023

The following are unofficial observations taken during the past 24 hours for the storm that has been affecting our region. Appreciation is extended to highway departments, cooperative observers, Skywarn spotters and media for these reports. This summary also is available on our home page at [weather.gov/pittsburgh](http://weather.gov/pittsburgh)

\*\*\*\*\*PEAK WIND GUST (AT LEAST 46 MPH)\*\*\*\*\*

LOCATION	MAX WIND GUST (mph)	TIME/DATE MEASURED	COMMENTS
----------	---------------------------	-----------------------	----------

OHIO

...Carroll County... Carrollton	54	530 PM 3/25	CWOP
...Jefferson County... Jefferson County Air	53	250 PM 3/25	MESOWEST
...Monroe County... Merrell Ridge	51	332 PM 3/25	RAWS
...Muskingum County... Zanesville Airport	48	159 PM 3/25	ASOS
...Tuscarawas County... New Philadelphia Air	60	401 PM 3/25	ASOS

PENNSYLVANIA

...Allegheny County... Allegheny County Air	55	355 PM 3/25	ASOS
I-79 at Steubenville	53	705 PM 3/25	PADOT
Pittsburgh Intl Airp	52	701 PM 3/25	ASOS
Parkway East at Rodi	48	405 PM 3/25	PADOT
...Beaver County... Beaver Falls Airport	53	455 PM 3/25	AWOS

DLC PHOTOS





**Duquesne Light Company**

Published by Sprout Social · March 27 at 3:00 PM · 🌐



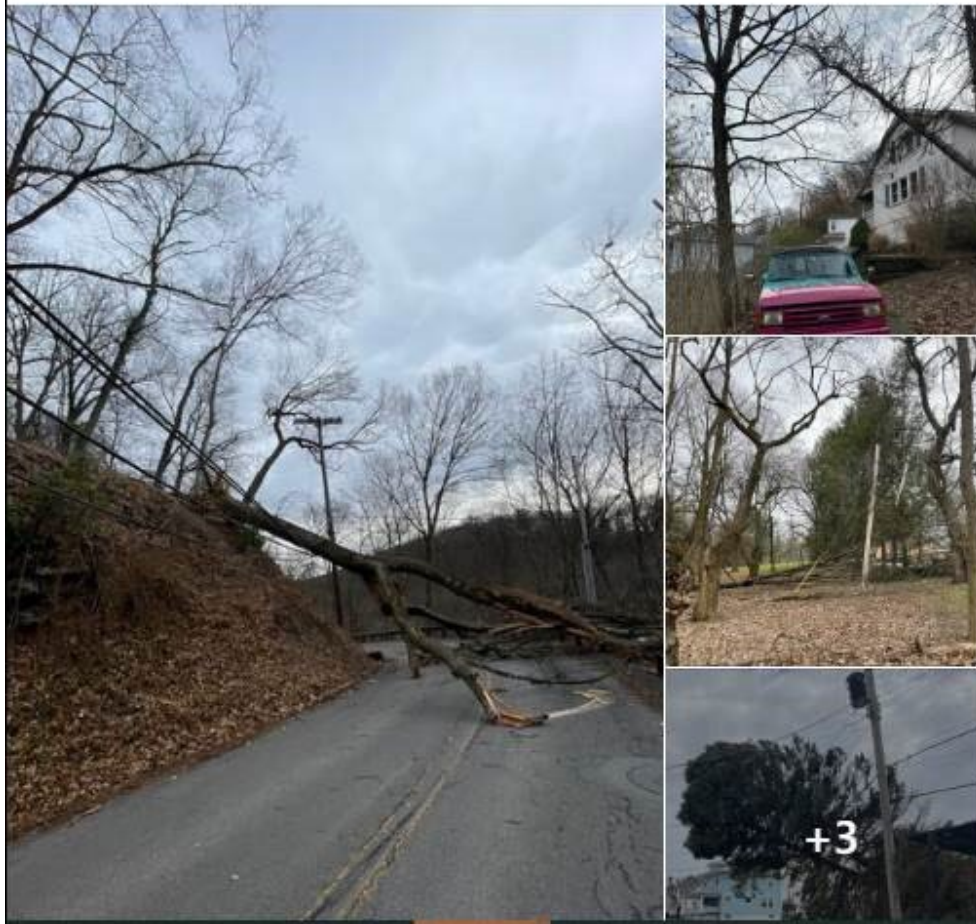
Duquesne Light Company (DLC) is continuing to work safely and as quickly as possible to restore service to customers impacted by the strong winds that brought widespread damage and power outages to the region over the weekend.

High winds, including gusts of approximately 60 mph, resulted in downed trees and broken utility poles and left nearly 50,000 DLC customers without service.

DLC has since restored power to more than 45,000 customers and is now working to restore service to approximately 3,600 customers who remain without power.

Due to the extensive and widespread damage, the estimated time of restoration for most of our remaining customers is 8 p.m. tonight, March 27, although many should be restored sooner. Communities that were especially hard hit, including Economy, Ambridge and Harmony, are expected to be fully restored by 10 p.m. tomorrow, March 28.

As crews continue to restore service, we continue to advise our customers to always avoid downed power lines and immediately call 9-1-1 if a medical emergency is experienced during an outage.



<https://www.wtae.com/article/pittsburgh-weather-wind-advisory-march-25/43415131>

## **Winds whip through western Pennsylvania, leaving thousands without power**

Duquesne Light, West Penn Power working to restore service

Updated: 9:34 PM EDT Mar 27, 2023

### **PITTSBURGH —**

Winds that topped out at 64 mph on Saturday left tens of thousands without power in western Pennsylvania.

***See the damage done across our area in the video above.***

As of 9:30 p.m. Monday, West Penn Power said nearly 4,000 customers still had no electricity while Duquesne Light was reporting less than 100 customers without power.

Duquesne Light says it may be until Monday at 8 p.m. before power is restored, while West Penn said it estimated it would take until 11 p.m. Tuesday for their crews to finish repairs.

As Saturday progressed, Pittsburgh's Action News 4 crews fanned out to cover several reports of wind damage.

In Pittsburgh's North Side, one person was taken to the hospital after a tree fell on a convertible.

Pittsburgh's Action News 4 photographers also captured roof damage in McKeesport and a partial building collapse in Lawrenceville.

The National Weather Service had issued a wind advisory for much of western Pennsylvania on Saturday.

<https://triblive.com/local/regional/morning-roundup-weekend-winds-knock-out-power-in-western-pa/>

# Morning Roundup: Weekend winds knock out power in Western Pa.

BRIAN C. RITTMEYER | Monday, March 27, 2023 6:15 a.m.



GETTY IMAGES

Here are some of the latest news items from this morning, Monday, March 27, 2023:

## Weekend winds knock out power in Western Pa.

Power outages stemming from high winds over the weekend were impacting several schools in the Pittsburgh area Monday morning.

Duquesne Light and West Penn Power were reporting thousands of customers without service.

As of about 5:30 a.m., Duquesne Light reported about 4,500 customers affected, primarily in Allegheny and Beaver counties.

In the Pittsburgh area, West Penn Power was reporting nearly 1,000 customers affected in Butler County, just over 900 in Allegheny County, about 250 in Armstrong County, 240 in Washington County, about 220 in Beaver County, and about 150 in Westmoreland County.

Several school districts have reported closures Monday because of the outages. A list is available from Tribune-Review news partner **WPXI**.