

DISTRICT	COUNTY	TOWNSHIP	CITY	ROUTE	SECTION	TOTAL SHEETS
8-0	DAUPHIN	SWATARA	HARRISBURG	0083	079	435
		PAXTANG BOROUGH		0230	045	
				3007	020	
				3013	009	

ECMS NO. 97828

COMMONWEALTH OF PENNSYLVANIA



DEPARTMENT OF TRANSPORTATION

DRAWINGS FOR CONSTRUCTION

OF STATE ROUTE 0083 SECTION 079 IN DAUPHIN COUNTY

FROM STA. 39+50.00 TO STA. 140+00.00 LENGTH 9,950.00 FT. 1.884 MI.
NB FROM SEG. 0424 OFFSET 0974 TO SEG. 0444 OFFSET 1432
SB FROM SEG. 0425 OFFSET 0974 TO SEG. 0445 OFFSET 1406

AND

STATE ROUTE 0230 SECTION 045
FROM STA. 7+02.06 TO STA. 46+24.39 LENGTH 3,831.97 FT. 0.726 MI.
FROM SEG. 0080 OFFSET 0000 TO SEG. 0050 OFFSET 1103
FROM SEG. 0081 OFFSET 0000 TO SEG. 0051 OFFSET 1115

STATE ROUTE 3007 SECTION 020
FROM STA. 90+62.41 TO STA. 112+58.40 LENGTH 2095.99 FT. 0.397 MI.
FROM SEG. 0040 OFFSET 1794 TO SEG. 0070 OFFSET 0978

STATE ROUTE 3013 SECTION 009
FROM STA. 29+91.55 TO STA. 44+88.28 LENGTH 1,444.60 FT. 0.274 MI.
FROM SEG. 0010 OFFSET 0000 TO SEG. 0030 OFFSET 0169

ALSO

STATE ROUTE 3009
FROM STA. 15+43.84 TO STA. 21+49.44

STATE ROUTE 3010
FROM STA. 21+49.44 TO STA. 107+79.54

STATE ROUTE 8017
STATE ROUTE 8021
STATE ROUTE 9402
STATE ROUTE 9403

LIMITS OF SIGNING

STATE ROUTE 0083 SECTION 079
FROM STA. 23+00.00 TO STA. 131+63.70

ALSO INCLUDED

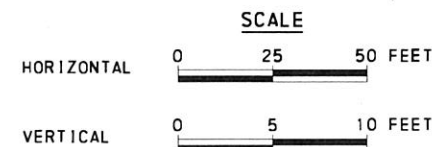
TRAFFIC CONTROL PLAN	85 SHEETS
SIGNING AND PAVEMENT MARKING PLAN	125 SHEETS
WATER UTILITY RELOCATION PLAN	27 SHEETS
SEWER UTILITY RELOCATION PLAN	17 SHEETS
UTILITY PLAN - RETIRED IN PLACE STEAM DEMOLITION	7 SHEETS
NATURAL GAS UTILITY RELOCATION PLAN	3 SHEETS
EROSION AND SEDIMENT POLLUTION CONTROL PLAN	95 SHEETS
HIGHWAY LIGHTING PLAN	20 SHEETS
ITS PLAN	41 SHEETS
BORING LOCATION PLAN	3 SHEETS
TRAFFIC SIGNAL PLAN	46 SHEETS
POST CONSTRUCTION STORM WATER MANAGEMENT PLAN	56 SHEETS
STRUCTURE PLANS	
S-39451	93 SHEETS
S-39452	70 SHEETS
S-39453	78 SHEETS
S-40308	3 SHEETS
S-40312	13 SHEETS
S-40313	13 SHEETS
S-40314	39 SHEETS
S-40315	16 SHEETS
S-40316	23 SHEETS
S-40317	12 SHEETS
S-40318	31 SHEETS
S-40319	40 SHEETS
CROSS SECTIONS	340 SHEETS
EXISTING STRUCTURE PLANS	
S-2384	6 SHEETS
S-2386	9 SHEETS
S-2387	6 SHEETS
S-7173	19 SHEETS
S-9870	10 SHEETS
S-12141	6 SHEETS
S-18035	3 SHEETS

SR 0083 RE-ESTABLISHED AS A LIMITED ACCESS HIGHWAY FROM STATION 29+38.41 TO STATION 83+24.00 LEGISLATIVE ROUTE 767 SECTION A14 R/W(B) APPROVED MARCH 4, 1994.

SR 0083 RE-ESTABLISHED AS A LIMITED ACCESS HIGHWAY FROM STATION 47+87.56 TO STATION 122+24.83 STATE ROUTE 0083 SECTION 079 GR/W APPROVED OCTOBER 4, 2022.

SR 0083 RE-ESTABLISHED AS A LIMITED ACCESS HIGHWAY FROM STATION 48+10.62 TO STATION 131+30.00 STATE ROUTE 0083 SECTION A79 R/W APPROVED JULY 12, 2022.

SR 0083 ESTABLISHED AS A LIMITED ACCESS HIGHWAY FROM STATION 83+64.88 TO STATION 197+67.89 LEGISLATIVE ROUTE 767 PARALLEL, SECTION 3 APPROVED JULY 24, 1952.



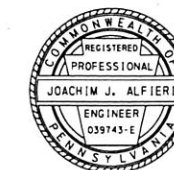
DESIGN DESIGNATION

HIGHWAY CLASSIFICATION - URBAN INTERSTATE
DESIGN SPEED - 60 MPH
PAVEMENT WIDTH - 3 TO 4 - 12' LANES
SHOULDER WIDTH - VARIES 10' TO 14'

TRAFFIC DATA

CURRENT A. D. T. - 135,569 (2022)
DESIGN YEAR A. D. T. - 168,210 (2050)
D. H. V. - 13,677 (2050)
D - 55%
T - 16%

PREPARED BY:
HNTB CORPORATION
4507 NORTH FRONT STREET
SUITE 300
HARRISBURG, PA 17110



Joachim J. Alfieri
PROFESSIONAL ENGINEER

DATE: May 5, 2023

RECOMMENDED DATE: 05/05/2023

John M. Bachman
Digitally signed by John M. Bachman
Date: 2023.05.05 11:27:56 -0400
PROJECT MANAGER

RECOMMENDED DATE: 05/08/2023

Kevin M. Keefe, P.E.
2023.05.08 06:44:21 -0400
DISTRICT EXECUTIVE

RECOMMENDED DATE:

DEPUTY SECRETARY

RECOMMENDED DATE:

SECRETARY OF TRANSPORTATION
(ON BEHALF OF THE GOVERNOR
AS WELL AS THE SECRETARY)