

**RR PERMIT
REDWOOD AVE**

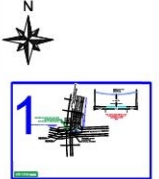
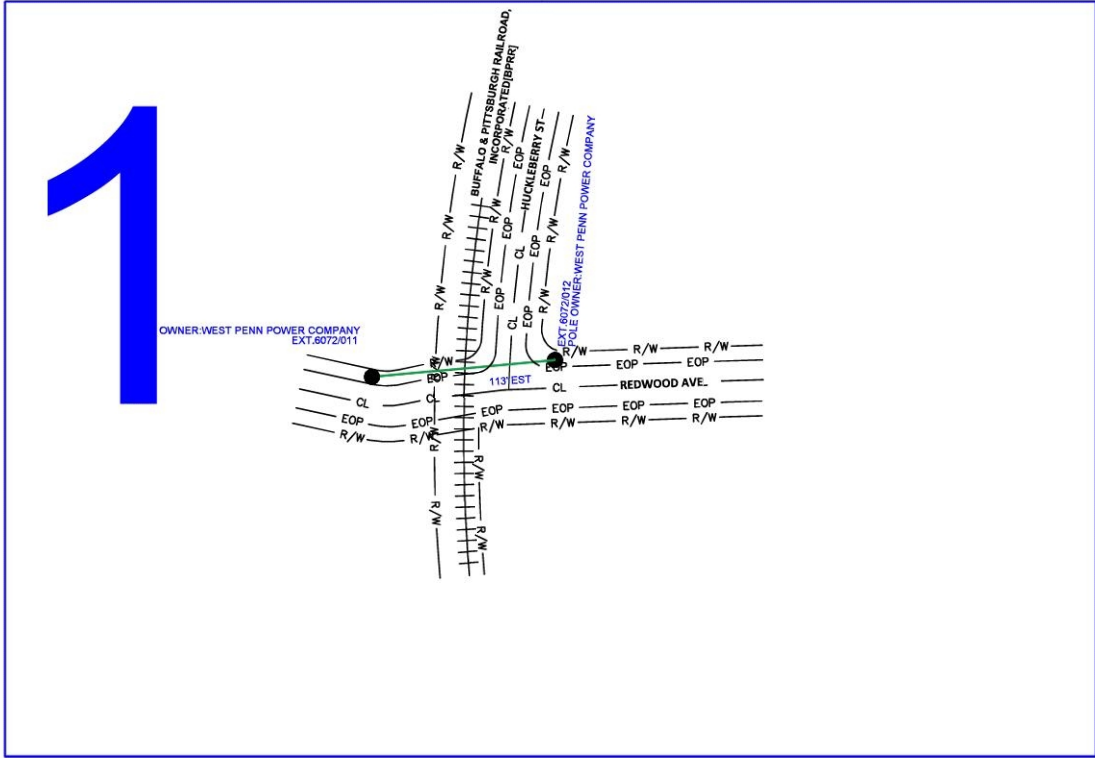
CERTIFIED CORRECT PLANS

Will M. D. P.E.
Professional Engineer

Approved by Bureau of Technical Utility Services

PA PUBLIC UTILITY COMMISSION

ATTEST *Rosemary Chiverton*
Secretary



LEGEND

	PROPOSED CONDUIT
	AERIAL OVERLAP
	SW SIDEWALK
	EOP
	POLE
	POWER JOINT Pole
	HYDRO Pole
	POLE BORE PIT
	MANHOLE
	HANDHOLE



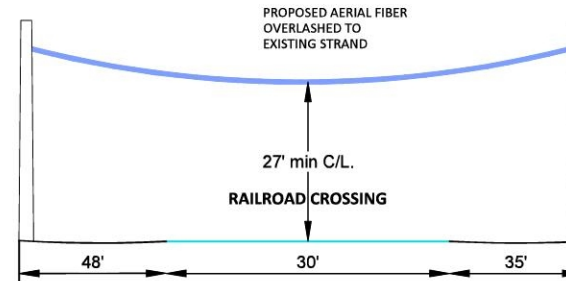
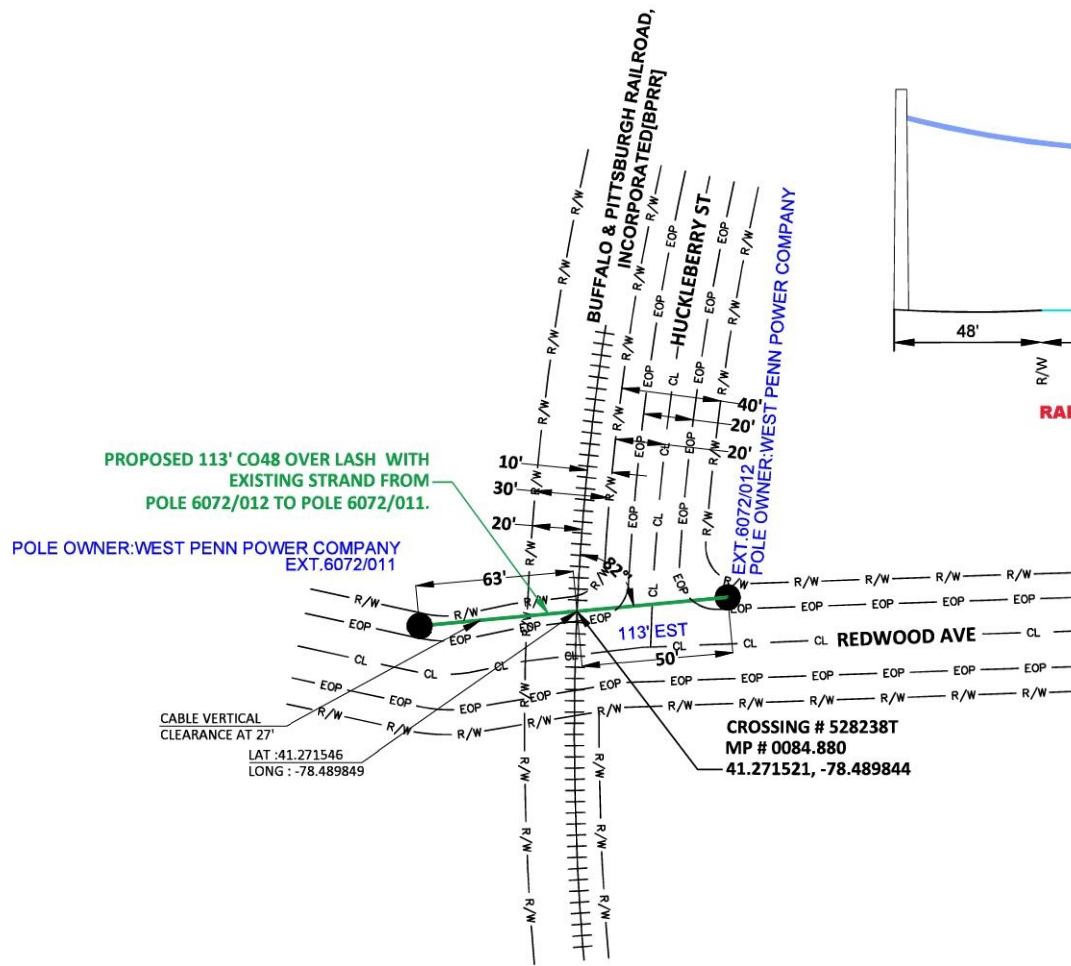
DATE CREATED: 6/15/23
DATE REVISED:
DRAWN BY: RAMTeCH



COMPANY:
Windstream
SYSTEM:
WEEDVILLE, PA
PROJECT NUMBER:
708332147
DESCRIPTION:
FTTP GPON PERMIT

MAP:
KEY MAP

RAMTeCH



RAIL ROAD CROSSING AERIAL CLEARANCE (TYPICAL) LOOKING NORTH NTS



LEGEND

- PROPOSED CONDUIT
- AERIAL OVERLASH
- SW SIDEWALK
- EOP
- POLE
- POWER POLE
- JOINT Pole
- ⊙ HYDRO Pole
- FED
- SLOPE FIT
- ▣ MANHOLE
- ▤ HANDHOLE



DATE CREATED: 6/15/23

DATE REVISED:

DRAWN BY: RAMTeCH



SCALE: 1:50

COMPANY: Windstream

SYSTEM: WEEDVILLE, PA

PROJECT NUMBER: 708332147

DESCRIPTION: FTTP GPON PERMIT

MAP:

1 OF 1

RAMTeCH

PROPOSED WINDSTREAM ATTACHED AT 27'