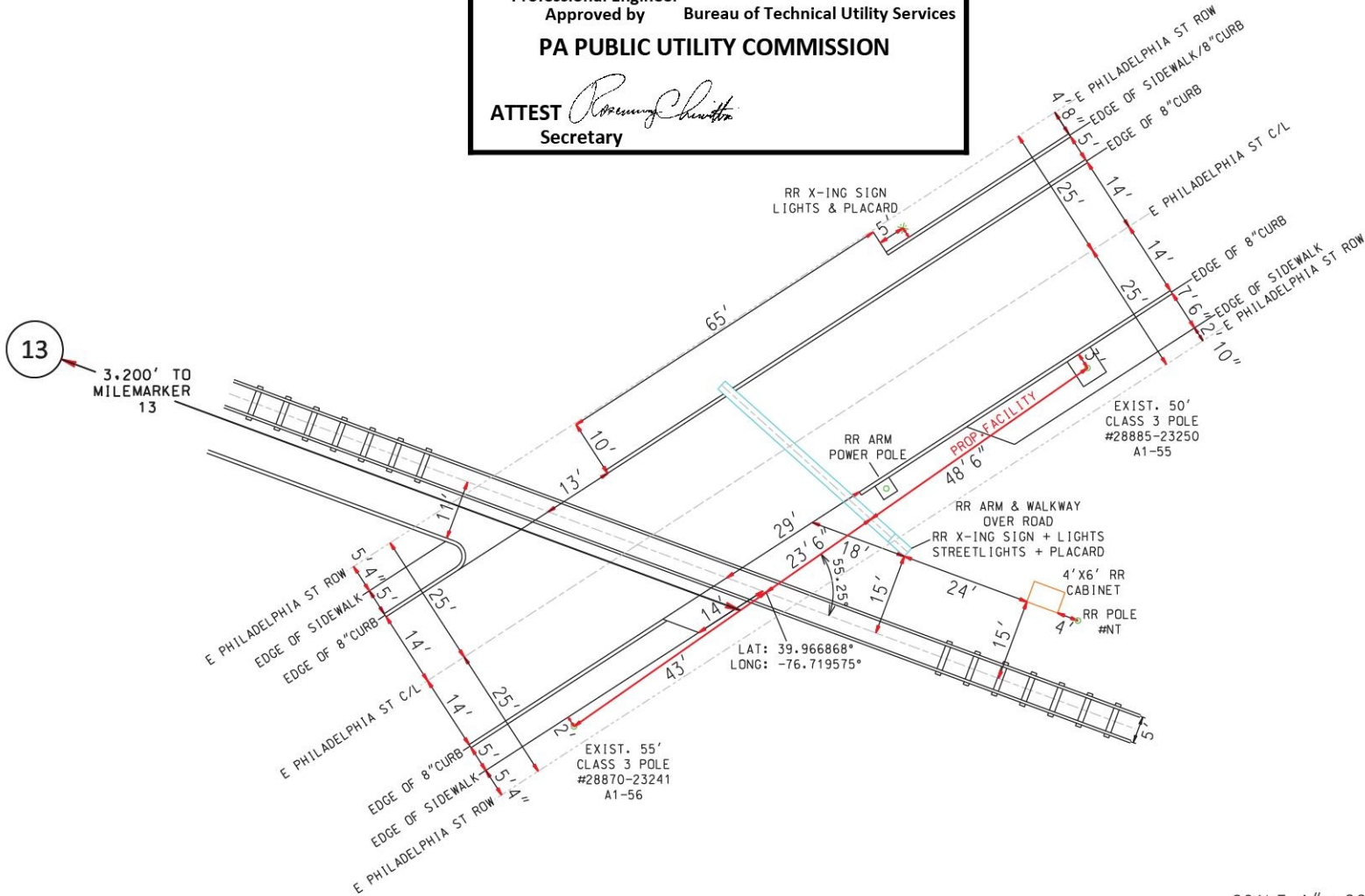




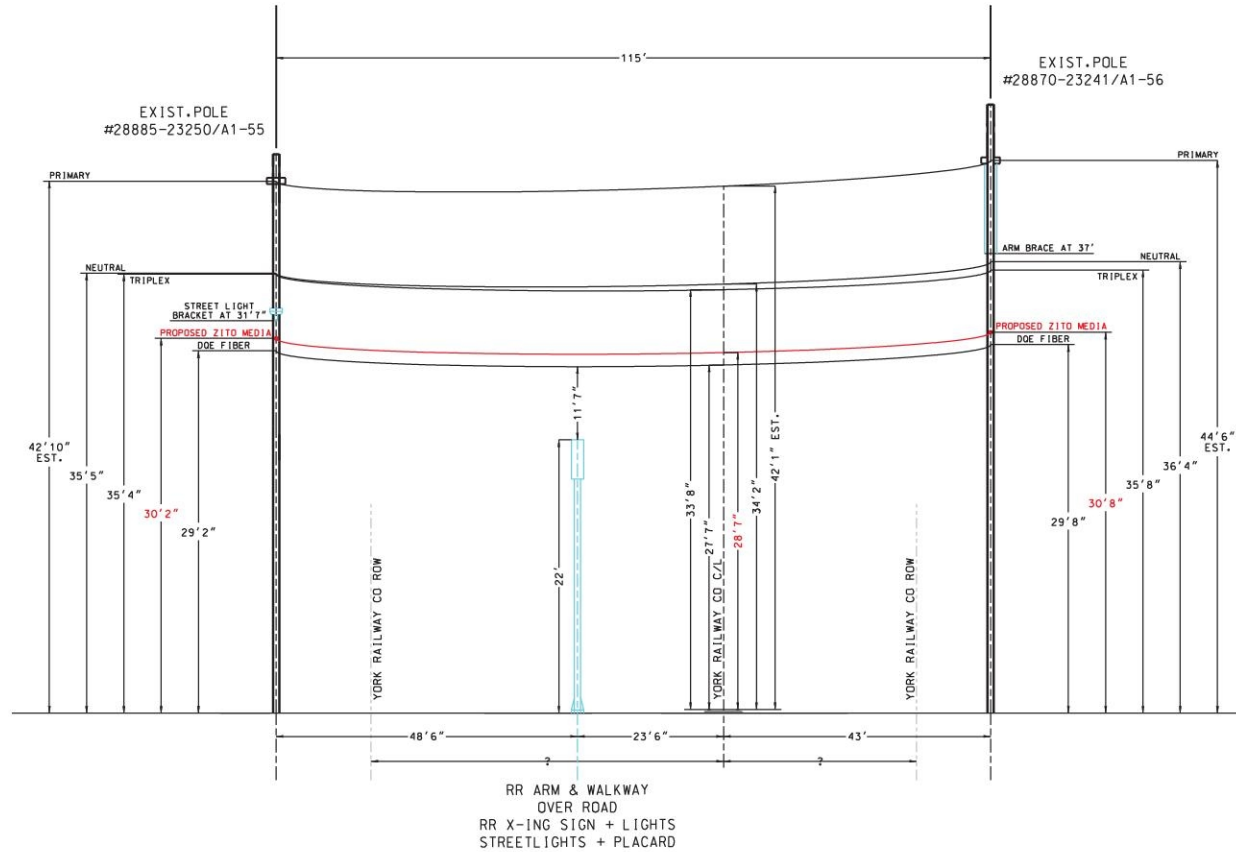
CERTIFIED CORRECT PLANS
Will M. A. P.E.
 Professional Engineer
 Approved by Bureau of Technical Utility Services
PA PUBLIC UTILITY COMMISSION
 ATTEST *Rosemary Hewitt*
 Secretary

Zito Media
 PROPOSED RAILROAD
 CROSSING
 AERIAL VIEW



WIRE/CABLE DETAILS:
 PROPOSED 115' OF
 3/8" 48 CNT FIBER OPTIC COMMUNICATIONS CABLE
 THROUGH A 1/4" MESSENGERED AERIAL DUCT (AD TECH 1 1/4" SIDR 9 FIGURE 8)
 DEADEND STRANDVICED CLAMPED ON POLES #28870-23241/A1-56 AND #28885-23250/A1-55

NOTES:
 SCALE 1" = 20' AT 11"X17" PLOT SIZE
 MAP #223-108
 YORK RAILWAY CO
 ID #854-637B
 E PHILADELPHIA ST.
 YORK, PA
 CROSSING AT TRACK C/L LAT: 39.966868°
 LONG: -76.719575°
 MILEMARKER #13



VIEW LOOKING SOUTHEAST

NOTES:
 SCALE H-1"= 20' V-1"= 10' AT 11"x17" PLOT SIZE
 MAP #223-108
 YORK RAILWAY CO
 ID #854-637B
 E PHILADELPHIA ST.
 YORK, PA
 CROSSING AT TRACK C/L LAT: 39.966868°
 LONG: -76.719575°
 MILEMARKER #13

WIRE/CABLE DETAILS:
 PROPOSED 115' DF
 3/8" 48 CNT FIBER OPTIC COMMUNICATIONS CABLE
 THROUGH A 1/4" MESSENGERED AERIAL DUCT (AD TECH 1 1/4" SDR 9 FIGURE 8)
 DEADEND STRANVICED CLAMPED ON POLES #28885-23250/A1-55 AND #28870-23241/A1-56