



**Elizabeth Rose Triscari**  
Director, Corporate Counsel  
852 Wesley Drive | Mechanicsburg, PA 17055  
Phone: 717-550-1574 | Fax: 717-550-1255  
[elizabeth.triscari@amwater.com](mailto:elizabeth.triscari@amwater.com)

March 28, 2024

**VIA ELECTRONIC FILING**

Rosemary Chiavetta, Secretary  
Pennsylvania Public Utility Commission  
Commonwealth Keystone Building  
400 North Street  
Harrisburg, PA 17105-3265

**In re: Application of Pennsylvania American Water for  
Approval of the Alteration of the Crossing (AAR #)  
by the Installation of a Sanitary Sewer Line Where  
Richard Street (Borough Owned) Crosses Below  
Grade the Tracks of Norfolk Southern, located in  
Koppel Borough, Beaver County, Pennsylvania**

Dear Secretary Chiavetta:

Enclosed please find the attached Application Form W in the above-referenced crossing located in Koppel Borough, Beaver County, Pennsylvania.

If you should have any questions, please feel free to contact David Drozd at (814) 938-4721.

Sincerely,

A handwritten signature in blue ink that reads "Elizabeth Rose Triscari".

Elizabeth Rose Triscari

Enclosure

cc: David Drozd (*via electronic mail*)  
All Parties on the Attached Certificate of Service (*in the matter specified*)

**BEFORE THE  
PENNSYLVANIA PUBLIC UTILITY COMMISSION**

<p><b>Application of Pennsylvania American Water for Approval of the Alteration of the Crossing (AAR #) by the Installation of a Sanitary Sewer Line Where Richard Street (Borough Owned) Crosses Below Grade the Tracks of Norfolk Southern, located in Koppel Borough, Beaver County, Pennsylvania</b></p>	<p>: : : : : : : : : : :</p>	<p><b>Docket No.</b></p>
--------------------------------------------------------------------------------------------------------------------------------------------------------------------------------------------------------------------------------------------------------------------------------------------------------------	----------------------------------------------------------------------	--------------------------

**CERTIFICATE OF SERVICE**

I hereby certify that I am this day serving the above-referenced Application upon the persons and in the manner indicated below, which service satisfies the requirements of 52 Pa. Code §1.54 (relating to service by a party).

**SENT VIA FIRST CLASS MAIL ON MARCH 28, 2024**

<p>Pennsylvania Department of Transportation ROW and Utility Division Bureau of Design-Project Delivery P.O. Box 3362 Harrisburg, PA 17105</p>	<p>Jason Zang, P.E. PENNDOT Engineering District 11-2 45 Toms Run Road Bridgeville, PA 15017</p>
<p>Armstrong Communications 437 North Main Street Butler, PA 16001</p>	<p>FirstEnergy Corporation Attn: Railroad Crossings 21 S Main St Akron, OH 44308</p>
<p>Office of Chief Counsel – PENNDOT PO Box 8212 Harrisburg, PA 17105-8212</p>	<p>Beaver County Planning and Redevelopment 810 Third Street Beaver, PA 15009</p>

**SENT VIA ELECTRONIC MAIL ON MARCH 28, 2024**

Norfolk Southern Corporation Real Estate Department 650 W Peachtree Street, NW – Box 22 Atlanta, Georgia 30308 Email: ns.permittin@railpros.com	JC Danhires Columbia Gas of PA 121 Champion Way, Suite 100 Canonsburg, PA 15317 Email: jdanhires@nisource.com
Mary Sue Binkowski Koppel Borough 6421 6 <sup>th</sup> Avenue Koppel, PA 16136 Email: info@koppelborough.com	

Respectfully submitted,



---

Elizabeth Rose Triscari, Esquire (PA ID #306921)  
Pennsylvania-American Water Company  
852 Wesley Drive  
Mechanicsburg, PA 17055  
Phone: (717) 550-1574  
Email: [elizabeth.triscari@amwater.com](mailto:elizabeth.triscari@amwater.com)

**Attorney for Pennsylvania-American Water  
Company**

**BEFORE  
PENNSYLVANIA PUBLIC UTILITY COMMISSION**

In re: Application of Pennsylvania-American Water Company for approval of the alteration of the crossing by the installation of sanitary sewer line where Richard Street, (Borough owned) crosses below grade the tracks of Norfolk Southern, located in Koppel Borough, Beaver County.

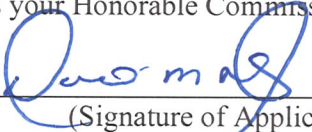
Application  
Docket No.

To Pennsylvania Public Utility Commission:

1. The name and address of applicant are: Pennsylvania-American Water Company located at 203 Sycamore St, Punxsutawney, PA 15767
2. The name and address of applicant's attorney are: Elizabeth Triscari located at 852 Wesley Drive, Mechanicsburg, PA 17055
3. Pennsylvania-American Water is currently planning to install approximately 100 LF of sanitary sewer pipe and two (2) new manholes along Richard Street in Koppel Borough, Beaver County, PA. The proposed crossing will enable PAWC to provide a more reliable sewer service to the surrounding area.
4. The proposed alteration of the Norfolk Southern railroad crossing consists of the sewer line construction by Pennsylvania-American Water Company by boring 65 linear feet of 24-inch diameter steel casing around 12-inch PVC sewer line. The sewer line will be installed utilizing the horizontal boring method.
5. The following public utilities, municipalities and corporations are affected by the proposed alteration of the crossing:
  - Pennsylvania Public Utility Commission
  - Norfolk Southern Railroad
  - Koppel Borough
  - Beaver County
  - Pennsylvania-American Water Company
  - First Energy Corporation
  - Columbia Gas of Pennsylvania, Inc.
  - Armstrong Communication
6. The total construction cost estimate for the project is approximately \$100,000. All construction, maintenance, inspections and funding will be the responsibility of Pennsylvania-American Water Company.

7. The alteration is necessary or proper for the following reasons: The project will improve the reliability of the wastewater system in the area by connecting system line for additional compacity.

Wherefore, applicant prays your Honorable Commission to approve the application:

  
\_\_\_\_\_  
(Signature of Applicant)

**§ 1.36. Verification.**

(a) Applications, petitions, formal complaints, motions and answers thereto containing an averment of fact not appearing of record in the action or containing a denial of fact shall be personally verified by a party thereto or by an authorized officer of the party if a corporation or association. Verification means a signed written statement of fact supported by oath or affirmation or made subject to the penalties of 18 Pa. C.S. §4904 (relating to unsworn falsification to authorities). If verification is required, notarization is not necessary.

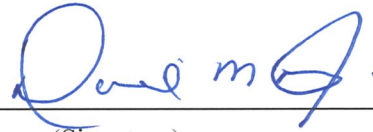
(b) The Verification form should comply substantially with the following:

**VERIFICATION**

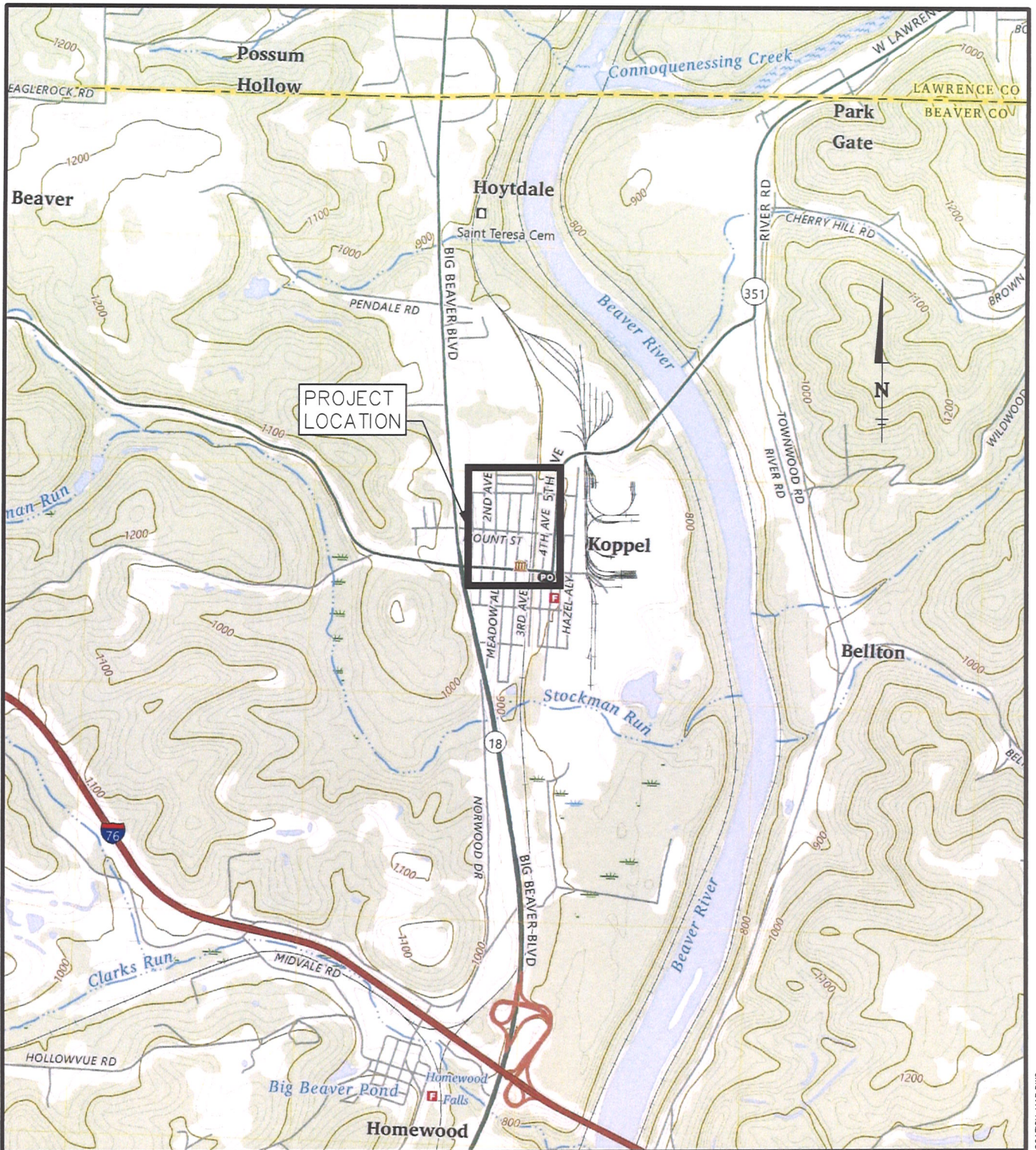
I, David Drozd, hereby state that the facts above set forth are true and correct (or are true and correct to the best of my knowledge, information and belief) and that I expect to be able to prove the same at a hearing held in this matter. I understand that the statements herein are made subject to the penalties of 18 Pa. C.S. § 4904 (relating to unsworn falsification to authorities).

3/28/2024

\_\_\_\_\_  
(Date)

A handwritten signature in blue ink, appearing to read "David M. Drozd", written over a horizontal line.

\_\_\_\_\_  
(Signature)



**LOCATION MAP**

PENNSYLVANIA-AMERICAN WATER COMPANY  
 RICHARD STREET-RAILROAD SANITARY SEWER BORE

KOPPEL BOROUGH, BEAVER COUNTY, PENNSYLVANIA  
 PORTION OF BEAVER FALLS, PA USGS MAP

SCALE: 1" = 2000'

**GD&F**

GWIN  
 DOBSON &  
 FOREMAN  
 ENGINEERS

3121 Fairway Drive  
 Altoona, PA 16602  
 814.943.5214  
 gdfengineers.com



30'(L)x8'(W)x12'(D)  
BORING PIT

PROPOSED SANITARY  
SEWER MANHOLE  
TOP EL. 909.17  
INV IN 899.55 (12" PVC)  
INV OUT 899.45 (12" PVC)

EXISTING SANITARY  
SEWER MANHOLE  
TOP EL. 908.84  
INV (A) 899.42  
INV (B) 899.29  
INV OUT 899.26

RICHARD STREET  
ASPHALT

CASING END SEAL  
SANITARY SEWER  
PIPELINE MARKER

4th AVENUE  
ASPHALT

PROVIDE 65 L.F. OF  
24" STEEL CASING  
PIPE INSTALLED BY  
HORIZONTAL BORING  
METHOD w/12" PVC  
CARRIER SANITARY  
SEWER PIPE

1,140' TO ARTHUR STREET (SR 351)  
CROSSING IN KOPPEL, PA.

LAT: N40°50'14.32"  
LONG: W80°19'26.65"  
SANITARY SEWER  
PIPELINE MARKER  
CASING END SEAL

35.41'  
31.00'

38.89'  
34.40'

91.67'

TRACK CENTERLINE

NORFOLK SOUTHERN RAILWAY

EXISTING SANITARY  
SEWER MANHOLE  
TOP EL. 912.70  
INV (A) 905.12  
INV (B) 900.23  
INV (C) 900.13  
INV OUT 900.16

60' NORFOLK SOUTHERN  
RIGHT OF WAY  
30.00'  
30.00'

SS SS SS SS SS SS SS SS SS SS SS SS

CEDAR ALLEY  
ASPHALT

PROPOSED SANITARY  
SEWER MANHOLE  
TOP EL. 912.39  
INV (A) 900.05 (12" PVC)  
INV (B) 900.23 (8" PVC)  
INV OUT 899.95 (12" PVC)

10'(L)x8'(W)x15'(D)  
RECEIVING PIT

BUILDING  
NO BASEMENT  
(2 APARTMENTS)  
FF EL. 914.92

RICHARD STREET  
ASPHALT

GRAPHIC SCALE



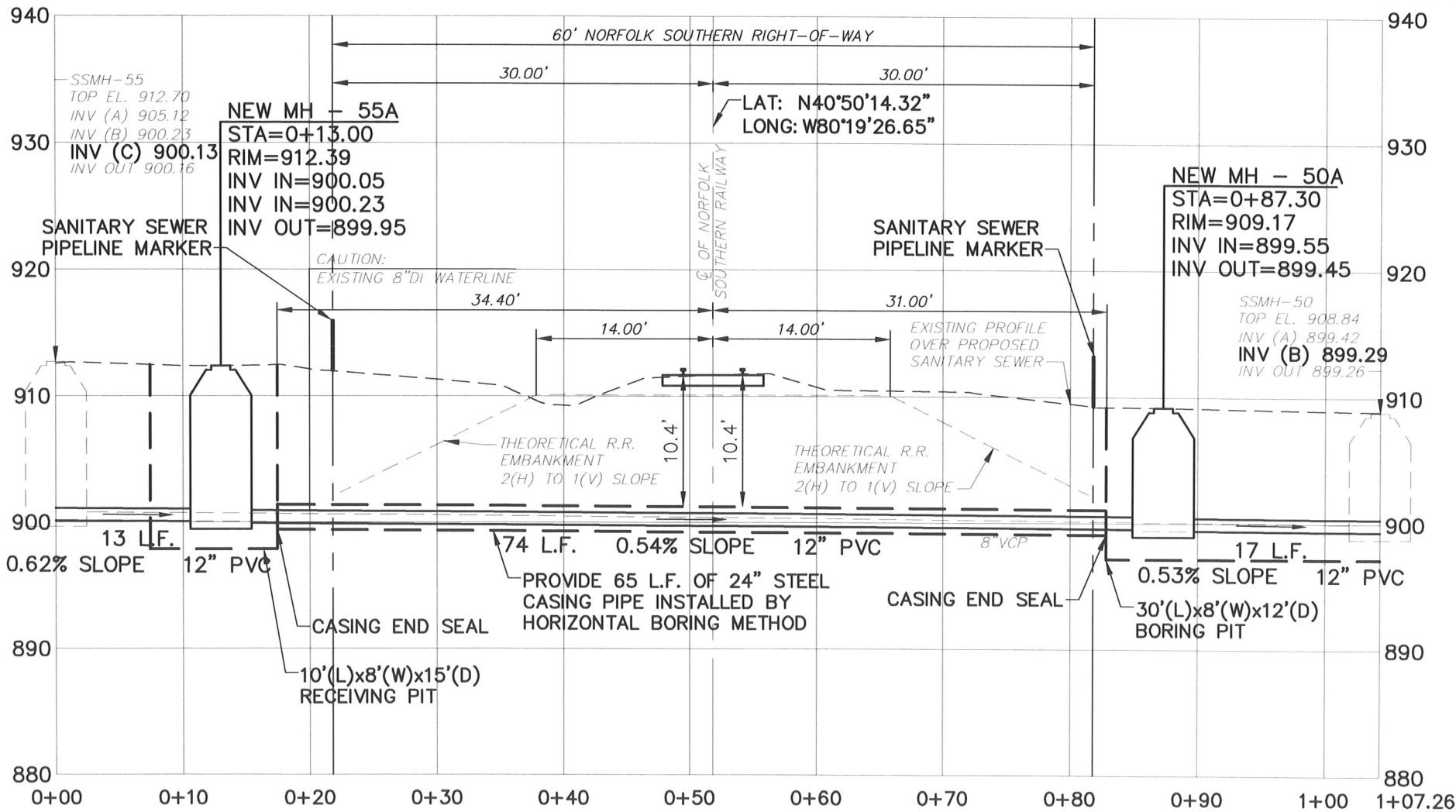
SANITARY SEWER PLAN

PENNSYLVANIA-AMERICAN WATER COMPANY  
(KOPPEL WASTEWATER DISTRICT)

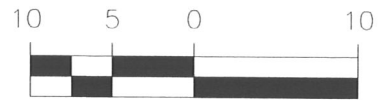
RICHARD STREET SANITARY  
SEWER RAILROAD CROSSING


KOPPEL BOROUGH  
BEAVER COUNTY, PENNSYLVANIA

**GD&F**  
GWIN  
DOBSON &  
FOREMAN  
ENGINEERS  
3121 Fairway Drive  
Altoona, PA 16602  
814.943.5214  
gdfeengineers.com



GRAPHIC SCALE



SANITARY SEWER PROFILE	
PENNSYLVANIA-AMERICAN WATER COMPANY (KOPPEL WASTEWATER DISTRICT)	
<b>RICHARD STREET SANITARY SEWER RAILROAD CROSSING</b>	
KOPPEL BOROUGH BEAVER COUNTY, PENNSYLVANIA	
 <b>GD&amp;F</b> <small>GWIN DOBSON &amp; FOREMAN ENGINEERS</small> <small>3121 Fairway Drive Allioto, PA 16802 814.943.5214 gdfengineers.com</small>	