

Theodore J. Gallagher
Assistant General Counsel
Legal Department



121 Champion Way, Ste. 100
Canonsburg, PA 15317
Office: 724.416.6355
Mobile: 724.809.0525
tjgallagher@nisource.com

April 8, 2024

Via Electronic Filing

Rosemary Chiavetta, Secretary
Pennsylvania Public Utility Commission
P.O. Box 3265
Harrisburg, PA 17105-3265

Re: *Application of Columbia Gas of Pennsylvania, Inc. for approval of the alteration of crossing DOT 517 830 K by the installation of a 4-inch diameter medium density plastic gas line where Stonewood Road crosses, at grade, the tracks of East Penn Railroad, located in the Springettsbury Township, York County*

Docket No. A-2024-

Dear Secretary Chiavetta:

Pursuant to 66 Pa.C.S. § 2702(a), Columbia Gas of Pennsylvania, Inc. submits herewith an Application for the approval of a proposed railroad crossing and alteration in Springettsbury Township, York County. As indicated on the attached Certificate of Service, copies have been served in the manner indicated.

If you have any questions regarding this filing, please do not hesitate to call me at 724-809-0525.

Very truly yours,


Theodore J. Gallagher

enclosure

cc: Certificate of Service (via e-mail)

**BEFORE THE
PENNSYLVANIA PUBLIC UTILITY COMMISSION**

Application of Columbia Gas of Pennsylvania, Inc.)
for approval of the alteration of crossing DOT 517)
830 K by the installation of a 4-inch diameter)
medium density plastic gas line where Stonewood)
Road crosses, at grade, the tracks of East Penn)
Railroad, located in Springettsbury Township,)
York County)

Docket No. A-2024-_____

To the Pennsylvania Public Utility Commission:

Pursuant to 66 Pa. C.S. §2702(a), Columbia Gas of Pennsylvania, Inc. (“Columbia”) hereby requests that the Commission issue an Order authorizing Columbia to install a 4-inch diameter medium density plastic gas line where Stonewood Road crosses, at grade, the tracks of East Penn Railroad located in Springettsbury Township, York County. In support of its request, Columbia states as follows:

1. The name and address of applicant are Columbia Gas of Pennsylvania, Inc., 121 Champion Way, Suite 100, Canonsburg, Pennsylvania 15317.
2. The name and address of applicant’s attorney are Theodore J. Gallagher, 121 Champion Way, Suite 100, Canonsburg, Pennsylvania 15317.
3. Columbia Gas of Pennsylvania, Inc. (“Columbia”) is engaged in the business of selling and distributing natural gas to retail customers within the Commonwealth and is therefore a “public utility” within the meaning of Section 102 of the Public Utility Code, 66 Pa.C.S. § 102, subject to the regulatory jurisdiction of the Commission. Columbia provides natural gas service to approximately 445,000 customers in 26 counties of Pennsylvania, pursuant to certificates of public convenience granted by the Commission.
4. Columbia’s alteration to the crossing where Stonewood Dr crosses, at grade, the tracks of East Penn Railroad is necessary to continue providing safe, reliable gas service to Springettsbury Township (Please see the attached Exhibit A for the exact location of the project).
5. The medium pressure 4-inch Medium Density Plastic distribution gas line is to be installed in an 8-inch steel casing using the horizontal auger bore construction method in public right of way on Stonewood Road.
6. A design one-call was placed. Springettsbury Township, The York Water Company, Met-Edison, Verizon North, Comcast, Everstream, and East Penn Railroad may be affected by the proposed alteration of the crossing.

7. The estimated cost of installing the facilities described in the Application is \$125,000. Columbia will be responsible for installing, maintaining, inspecting, and funding said facilities.

8. The alteration is necessary or proper for the following reasons: The existing bare steel pipeline that currently crosses under the railroad has been identified for replacement due to age and condition.

9. The abandonment and replacement of the existing gas line will not impact rates or service provided to Columbia's customers.

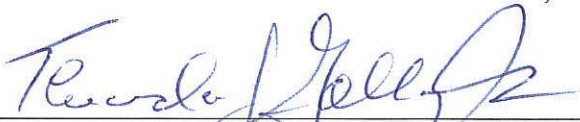
10. The installation of Columbia's facilities will have no impact on the physical integrity of East Penn Railroad's tracks or supporting terrain and, as such, compliance with East Penn Railroad construction requirements will be unnecessary.

11. Columbia seeks to cross the facilities of East Penn Railroad at an established public highway-rail crossing and, therefore, requests that the Commission approve Columbia's application without any obligation that Columbia remunerate East Penn Railroad for the privilege of occupying the right of way.

Wherefore, Columbia Gas of Pennsylvania, Inc. requests that the Commission approve its application.

COLUMBIA GAS OF PENNSYLVANIA, INC.

By:



Theodore J. Gallagher (Atty ID 90842)

NiSource Corporate Services Co.

121 Champion Way, Ste 100

Canonsburg, PA 15317

tjgallagher@nisource.com

Tel. 724-809-0525

Dated: April 8, 2024

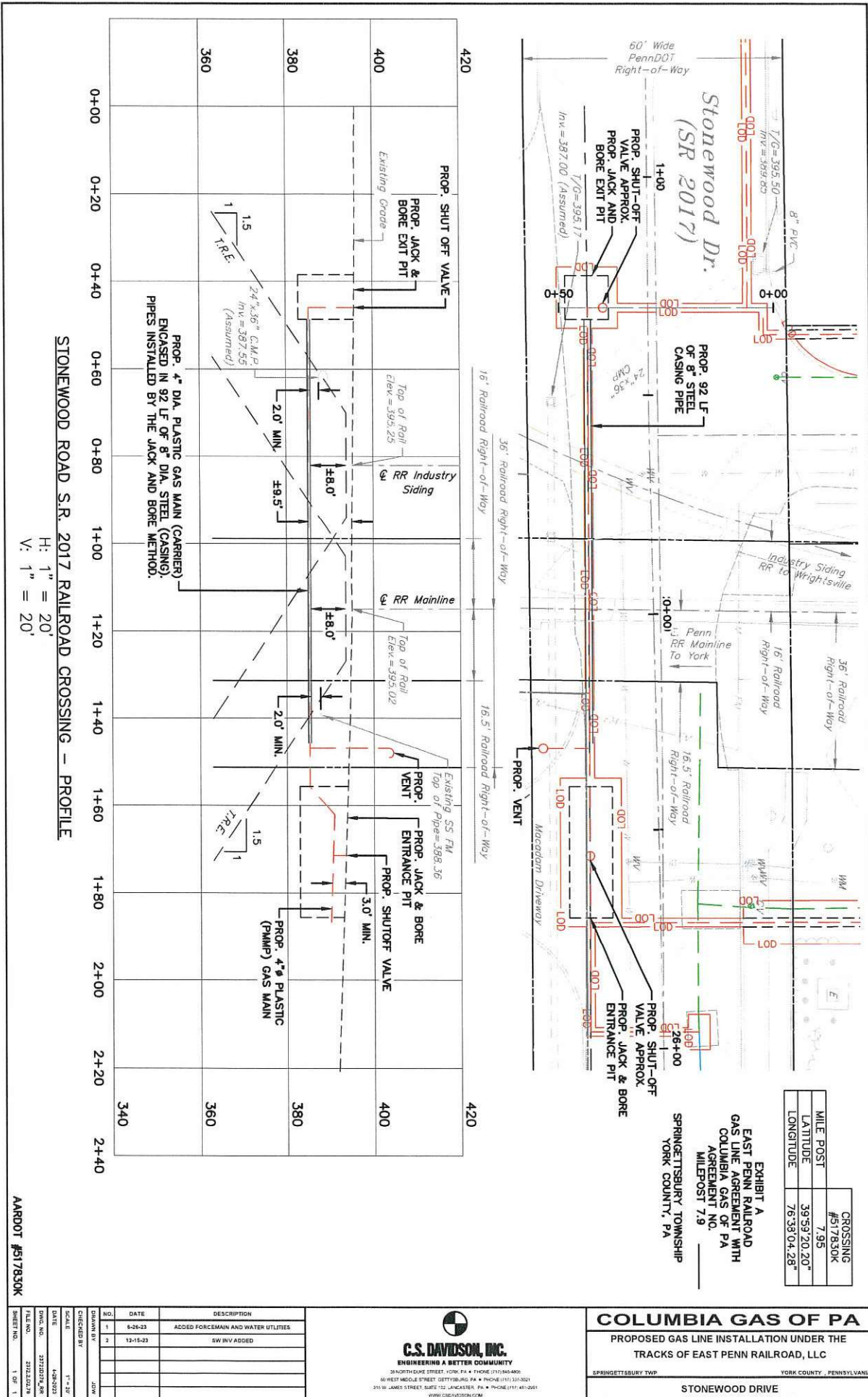
VERIFICATION

I, Benjamin Bellot, hereby state that the facts above set forth are true and correct (or are true and correct to the best of my knowledge, information and belief) and that I expect to be able to prove the same at a hearing held in this matter. I understand that the statements herein are made subject to the penalties of 18 Pa. C.S. § 4904 (relating to unsworn falsification to authorities).

Date: April 8, 2024

/s/ Benjamin Mellot

Exhibit A



420
400
380
360

0+00 0+20 0+40 0+60 0+80 1+00 1+20 1+40 1+60 1+80 2+00 2+20 2+40

420
400
380
360
340

PROP. SHUT-OFF VALVE APPROX. PROP. JACK AND BORE EXIT PIT

Existing Grade

PROP. 4" DIA. PLASTIC GAS MAIN (CARRIER) ENCASED IN 92 LF OF 8" DIA. STEEL CASING. PIPES INSTALLED BY THE JACK AND BORE METHOD.

24" x 36" C.M.P. Inv = 387.55 (Assumed)

1.5
1
1

2.0' MIN. ±8.0' ±8.0' 2.0' MIN.

1.5
1
1

PROP. SHUT-OFF VALVE APPROX. PROP. JACK AND BORE ENTRANCE PIT

Existing SS FM Top of Pipe = 388.36

PROP. JACK & BORE PROP. SHUT-OFF VALVE

3.0' MIN.

PROP. 4" PLASTIC (PMMP) GAS MAIN

340

1.5
1
1

2.0' MIN.

1.5
1
1

3.0' MIN.

1.5
1
1

3.0' MIN.

1.5
1
1

3.0' MIN.

1.5
1
1

3.0' MIN.

1.5
1
1

3.0' MIN.

1.5
1
1

3.0' MIN.

1.5
1
1

3.0' MIN.

1.5
1
1

3.0' MIN.

1.5
1
1

3.0' MIN.

1.5
1
1

3.0' MIN.

1.5
1
1

3.0' MIN.

1.5
1
1

3.0' MIN.

1.5
1
1

3.0' MIN.

1.5
1
1

3.0' MIN.

1.5
1
1

3.0' MIN.

1.5
1
1

3.0' MIN.

1.5
1
1

3.0' MIN.

1.5
1
1

3.0' MIN.

1.5
1
1

3.0' MIN.

1.5
1
1

3.0' MIN.

1.5
1
1

3.0' MIN.

1.5
1
1

3.0' MIN.

1.5
1
1

3.0' MIN.

1.5
1
1

3.0' MIN.

1.5
1
1

3.0' MIN.

1.5
1
1

3.0' MIN.

1.5
1
1

3.0' MIN.

1.5
1
1

3.0' MIN.

1.5
1
1

3.0' MIN.

1.5
1
1

3.0' MIN.

1.5
1
1

3.0' MIN.

1.5
1
1

3.0' MIN.

1.5
1
1

3.0' MIN.

1.5
1
1

3.0' MIN.

1.5
1
1

3.0' MIN.

1.5
1
1

3.0' MIN.

1.5
1
1

3.0' MIN.

1.5
1
1

3.0' MIN.

1.5
1
1

3.0' MIN.

1.5
1
1

3.0' MIN.

1.5
1
1

3.0' MIN.

1.5
1
1

3.0' MIN.

1.5
1
1

3.0' MIN.

1.5
1
1

3.0' MIN.

1.5
1
1

3.0' MIN.

1.5
1
1

3.0' MIN.

1.5
1
1

3.0' MIN.

1.5
1
1

3.0' MIN.

1.5
1
1

3.0' MIN.

1.5
1
1

3.0' MIN.

1.5
1
1

3.0' MIN.

1.5
1
1

3.0' MIN.

1.5
1
1

3.0' MIN.

1.5
1
1

3.0' MIN.

1.5
1
1

3.0' MIN.

1.5
1
1

3.0' MIN.

1.5
1
1

3.0' MIN.

1.5
1
1

3.0' MIN.

1.5
1
1

3.0' MIN.

1.5
1
1

3.0' MIN.

1.5
1
1

3.0' MIN.

1.5
1
1

3.0' MIN.

1.5
1
1

3.0' MIN.

1.5
1
1

3.0' MIN.

1.5
1
1

3.0' MIN.

1.5
1
1

3.0' MIN.

1.5
1
1

3.0' MIN.

1.5
1
1

3.0' MIN.

1.5
1
1

3.0' MIN.

1.5
1
1

3.0' MIN.

1.5
1
1

3.0' MIN.

1.5
1
1

3.0' MIN.

1.5
1
1

3.0' MIN.

1.5
1
1

3.0' MIN.

1.5
1
1

3.0' MIN.

1.5
1
1

3.0' MIN.

1.5
1
1

3.0' MIN.

1.5
1
1

3.0' MIN.

1.5
1
1

3.0' MIN.

1.5
1
1

3.0' MIN.

1.5
1
1

3.0' MIN.

1.5
1
1

3.0' MIN.

1.5
1
1

3.0' MIN.

1.5
1
1

3.0' MIN.

1.5
1
1

3.0' MIN.

1.5
1
1

3.0' MIN.

1.5
1
1

3.0' MIN.

1.5
1
1

3.0' MIN.

1.5
1
1

3.0' MIN.

1.5
1
1

3.0' MIN.

1.5
1
1

3.0' MIN.

1.5
1
1

3.0' MIN.

1.5
1
1

3.0' MIN.

1.5
1
1

3.0' MIN.

1.5
1
1

3.0' MIN.

1.5
1
1

3.0' MIN.

1.5
1
1

3.0' MIN.

1.5
1
1

3.0' MIN.

1.5
1
1

3.0' MIN.

1.5
1
1

3.0' MIN.

1.5
1
1

3.0' MIN.

1.5
1
1

3.0' MIN.

1.5
1
1

3.0' MIN.

1.5
1
1

3.0' MIN.

1.5
1
1

3.0' MIN.

1.5
1
1

3.0' MIN.

1.5
1
1

3.0' MIN.

1.5
1
1

3.0' MIN.

1.5
1
1

3.0' MIN.

1.5
1
1

3.0' MIN.

1.5
1
1

3.0' MIN.

1.5
1
1

3.0' MIN.

1.5
1
1

3.0' MIN.

1.5
1
1

3.0' MIN.

1.5
1
1

3.0' MIN.

1.5
1
1

3.0' MIN.

1.5
1
1

3.0' MIN.

1.5
1
1

CERTIFICATE OF SERVICE

I hereby certify that I have this day served a true copy of the foregoing document upon the participants, listed below, in accordance with the requirements of § 1.54 (*relating to service by participant*).

Mark Chappell, P.E.
Pennsylvania Department of Transportation
Utilities And Right of Way Section
Po Box 3362
Harrisburg, Pa 17105-3362
Marchappel@Pa.Gov

Gina M. D'Alfonso
Office of Chief Counsel – PennDOT
P.O. Box 8212
Harrisburg, Pa 17105-8212
gdanlfonso@pa.gov

Zach Faubel
Director of Operations and Maintenance
East Penn Railroad
505 South Broad Street
Kennett Square, Pa 19348
zfaubel@regional-rail.com

Ahmed Lasloudji
Pennsylvania Department of Transportation
District 08
2140 Herr Street
Harrisburg Pa 17120
Alasloudji@Pa.Gov

Julie Wheeler, President
York County Commissioners
2nd Floor
28 East Market Street
York, Pa 17401
jlwheeler@Yorkcountypa.Gov

Mark Swomley, Chairman
Springettsbury Township
1501 Mt Zion Road
York, Pa 17402
mark.swomley@springettsbury.com

Dana Beck
Springettsbury Township Public Works Department
1501 Mt Zion Road
York, Pa 17402
dana.beck@springettsbury.com

Mellyssa Adams
Met-Edison / FirstEnergy
21 S Main St
Akron, Oh. 44308
madams@firstenergycorp.com

Jason Heitman
York Water Company
130 E Market Street
York, PA 17401
jasonh@yorkwater.com

George Cassidy
Everstream
111 S Independence Mall E Suite 608
Philadelphia, Pa. 19106
gcassidy@everstream.net

Ronald Silinskie
Verizon North
37 W 8th St
Wyoming, Pa. 18644
ronald.silinskie@verizon.com

Robert Dunn
Comcast
C/O Usic Locating Services Inc
13085 Hamilton Crossing Blvd Suite 200
Carmel, In. 46032
robertdunn@usicllc.com

Dated this 8th day of April, 2024.



Theodore J. Gallagher